

SIMMENTAL 2004



new

ECLIPSE

POUR-ON FOR CATTLE

The power of a combination.....in a pour-on

It's a fact. Resistance to endectocide pour-ons is widespread and many cases they simply don't work as well as they used to, despite what it might say on the label. Now there's an answer. New ECLIPSE Pour-On for Cattle - the most potent pour-on ever developed.

By combining abamectin with levamisole new ECLIPSE controls even the most difficult to kill parasites, including *Cooperia* strains resistant to endectocides such as eprinomectin™ and doramectin®. And with two actives ECLIPSE will help keep resistance off your property for a whole lot longer. In fact ECLIPSE works so well that in 6 out of 6 trials it out-performed Eprinex™ and 5 out of 5 trials out performed Dectomax®.

New ECLIPSE, a combination pour-on that eclipses all others, leaving them light years behind.

	ECLIPSE	Eprinex™	Dectomax®
Combination potency to fight resistance	YES	NO	NO
Controls endectocide resistant <i>Cooperia</i>	YES	NO	NO



ECLIPSE POUR-ON FOR CATTLE
COMBINATION POWER - POUR-ON CONVENIENCE



Ancore New Zealand Ltd., 17 Shea Terrace, Takapuna, PO Box 36 240 Northcote, Telephone 09 489 4060 Fax: 09 489 4020
Website: www.ancore.co.nz Registered pursuant to the ACVM Act 1997 No. A9270. See www.nzta.govt.nz/acvm/ for registration conditions.
™ Eprinex is a registered trademark of Merial Limited, 27 Knightsbridge, London SW1.
® Dectomax is a registered trademark of Pfizer New Zealand Ltd, 14 Normandy Rd, Mt Eden, Auckland.

Ancore
The Sign of Good Animal Care

where do you find a

seedstock producer with an unswerving

commitment

to meeting your needs, giving their personal

assurance of quality and added value

to your business?



GLENSIDE SIMMENTALS

Breeding Policies:

- ▲ 120 reg. cows run under commercial conditions.
- ▲ Structure, temperament and calving-ease primary focus.
- ▲ Price no consideration when buying in sires.
- ▲ Only top 50% of bulls sold for breeding.

Sale Bulls:

- ▲ Quiet and user-friendly
- ▲ Comprehensive guarantee
- ▲ Free delivery in South Island
- ▲ Simplified EBV format
- ▲ Polled and horned

Annual Production Sale - 2.00 pm Thurs 27th May 2004

FREEPHONE 0800 117 891



GLENSIDE SIMMENTALS

Fax 03 485 9729 Email: glenside@xtra.co.nz

Garry & Julene McCorkindale

Waitahuna, RD 3, Lawrence, Otago, New Zealand.

New Zealand Simmental 2004

— VOLUME 48 —



PUBLISHED BY:

The Simmental Cattle Breeders' Society
54-56 Kimbolton Road, PO Box 503, Feilding
Phone: (06) 323 4484
Fax: (06) 323 3878
Email: simmentalnz@beefbreeders.co.nz
Website: www.simmental.co.nz

—SIMMENTAL COUNCIL—

PRESIDENT – Craig Martin

383 Rosedale Road, R D 2, Upper Moutere, Nelson
Phone: 03 543 2292 • Fax: 03 543 2292
Email: randcmartin@paradise.net.nz

VICE PRESIDENT – Grant Latimer

199a Greenlane Road West, Auckland
Phone: 09 524 9483 • Email: maungakiekie@xtra.co.nz

COUNCILLORS

Peter McWilliam

Admiral Road, Gladstone, Masterton
Phone: 06 372 7724 • Fax: 06 372 7770
Email: p-s-mcwilliam@xtra.co.nz

Ross Cockburn

Mt Prospect, R D 2, Te Anau
Phone: 03 249 7082 • Fax: 03 249 7085
Email: prospect@fiordland.net.nz

Helen Ellis

Puriri Station, Parapara Road, R D 3, Kaitaia
Phone: 09 406 0201 • Fax: 09 406 0205
Email: puririsimmentals@xtra.co.nz

Alastair Midgley

Willowbrook, R D 2, Timaru
Phone: 03 612 6671 • Fax: 03 612 6651
Email: midgley-willowbrook@xtra.co.nz

Warren Burgess

Puketiro, R D 2, Owaka
Phone: 03 415 8019 • Fax: 03 415 8019
Email: burgessbunch@xtra.co.nz

John Scott (Co-opted)

Roberts Road, R D 2, Cambridge
Phone: 07 827 2864 • Fax: 07 827 2977
Email: john.scott@clear.net.nz

BREED MANAGER – Errol Harvey

Phone: 06 323 4484 Fax: 06 323 3878
Email: simmentalnz@beefbreeders.co.nz

index of advertisers

Ailsa Simmentals	26
Allflex	60
Ancare	Inside front
Beresford Simmentals	26
Brooklands Simmentals	17
Cariboo Simmental Stud	51
Cattle Plus	13
Central South Island Sale	9
Cornwall Park Simmentals	25, 60
Falcon Hill Simmentals	9
GeneMark	32-33
Glenanthony Simmentals	74
Glendevon Simmentals	13
Glenside Simmentals	1
Hampton Downs Simmental	34
High Valley Simmentals	22
Island Stream Simmental Stud	58
Karewa Simmentals	63
Ladburn Simmentals	64
Landcorp Waikite Simmental	8
Leafland Simmental Stud	47
LeeAnne Simmentals	49
Lynbrae Simmentals	61
Maungaraki Cattle Company	27
Nuweland Simmentals	13
Oakdale Simmentals	16
PGG Livestock	73
Pinelee Simmentals	56
Potawa Simmentals	53
Pouriwai Simmentals	56
Premier Genetics NZ Ltd	15
Puketawa Simmentals	30-31
Puriri Simmentals	16
Riverbend Fleckvieh Simmentals	48
Ruaview Simmentals	58
Silver Fern Simmentals	Back cover
Spermex	20-21
Tapuata Simmentals	63
Tarawapake Simmentals	9
Te Raumauku Simmentals	52-53
Technipharm	63
Tim Brittain Computing	73
Waikato & Districts Breeders	25
Waimumu Simmentals	58
Waitaia Simmentals	16
Willowbrook Simmentals	Inside back
Waiwhare Simmentals	17
Wrightson	62
Xcell Breeding Services Ltd	61



Introducing Errol Harvey: New Breed Manager	4
Peter McWilliam Retires from Simmental NZ Council	4
From the President	5
New Zealand Beef Expo 2003	6
Management Groups.....	10
Farm Assurance Programme	14
Beef Class Structural Assessment	18
Simmentals in Paradise	23
Royal Show 2003	28
NATIONAL SIMMENTAL BULL SALE CATALOGUE	35
Bull Test Station: Simmental NZ Boarding School for Boys	50
NSW Tour 2004	54
Terrilynne Dispersal	57
Graeme Morris Bain	59
Wayne McLaren: Accredited Assessor	61
National Beef Cattle Improvement Scheme of South Africa	65
They Milk Them in Switzerland... and in Taranaki too!	66
Internet Solutions	68
AI SIRES DIRECTORY 2004	70
SEMEN FOR SALE LISTING	71
COMPREHENSIVE BREEDERS INDEX	75
Farewell to Christchurch Dinner	80

While every effort is made to ensure the accuracy of material published, no responsibility will be assumed for errors or omissions. Opinions and views expressed in this publication are not necessarily that of the Simmental Cattle Breeders Society.

Editor: Errol Harvey • Consultant: John Waugh • Graphics: Sue Elliott, Adele Gray, Jenna Lester
Production by The Caxton Press, Christchurch



Introducing **Errol Harvey** **NEW BREED MANAGER**

With the move of Simmental NZ to the NZ Performance Beef Breeders headquarters in Feilding, long time Feilding veterinarian Errol Harvey BAgSc, BVSc (53) has been appointed Breed manager.

Errol grew up in the South Island, being educated at Waitaki and Christchurch Boys High Schools, before doing an Agricultural Science degree at Lincoln University. Completing a Veterinary degree at Massey University he then practised in several South Island towns – Darfield, Wanaka, Gore and Winton before moving north to buy a practice in the Manawatu, where he has been for the past 20 years.

He has recently sold this practice, seeking both a challenge and a change of direction.

He has an abiding passion for cattle, learnt working with his uncle Monty Ericson who farmed at “Matanaka”, Wai-kouaiti, and who was president of the NZ Angus Society in the 1970s.

Errol’s grandfather Artie Ericson farmed Shorthorns at Tokanui, near Haldane, in the deep south.

Errol reckons he’s delighted to have the opportunity to be involved with Simmentals. “I believe they have a great future,” he says. “Their maternal ability and growth are without peer.”

“I will do all in my power to help Simmental breeders make the most of the move to Feilding and the association with NZ Performance Beef Breeders.

“I believe the move will allow Simmental breeders to share in the efficiencies that come from working together with other breeds for the benefit of beef, which I’m certain is a common goal of all cattle breeders.”

Errol, who is married and has 2 teenage children, is really looking forward to meeting Simmental breeders across the country either on farm as individuals or in groups at training sessions and other events.

The addition of Simmental NZ means that NZ Performance Beef Breeders now records the performance and pedigrees for more than 50,000 productive dams annually for 1000 seedstock producers from 9 beef breed Associations nationwide.

— JOHN WAUGH

Peter McWilliam

RETIRES FROM SIMMENTAL NZ COUNCIL

After spending 12 years on the Council of Simmental NZ, Peter McWilliam is calling it a day and stepping down in June. He reckons it is a good time to be leaving – when the Council is in such good heart. “The Society is really in good shape at the moment,” he says. “It seems to be firing along really well with the new office and a really enthusiastic team.”

Peter joined the Society when he arrived in New Zealand and began breeding Simmentals in 1987. By 1992 he was sitting around the Council table where he was part of the Promotions Committee from 1996 to 2003 and after filling the Vice President’s role for a couple of years he took on the President’s job from 1999 to 2001.

Over the years Peter has had much admiration for the commitment and enthusiasm of Council members. “It really struck me that it’s not until you join that you understand just how much time and energy goes into being on the Council.”

He is proud of the Society and its place in the beef industry. “The Simmental Society is recognised by the commercial cattle industry as being innovators and instigators



of new initiatives,” he says, adding that it is pleasing to see how well the Society cooperates with the other breed societies, and the industry as a whole.

Although he is moving off the Council, Peter is fully intending to carry on breeding Simmental cattle, and plans to spend more time with his young but quickly growing family. He also plans to do more travelling, saying that in his younger days he spent a lot of time overseas in other cattle producing countries and he is looking forward to getting back out and seeing the bigger picture. Having just returned from a great trip to Australia with 34 fellow Simmental breeders, he remarked on the great camaraderie between cattlemen and women. “It was an amazing experience and shows what you can do if you get everyone on the same wavelength and in an exciting and interesting environment.” Such was the enjoyment, that with a bit more time and a few less Simmental NZ appointments there are sure to be many more trips to come.

— JACKIE HARRIGAN

FROM THE President

vision - leadership - adding value

It has long been recognised the difference between the breeds is less than the difference within the breeds. In nearly 30 years in the cattle business I have witnessed many changes imposed on the cattle, some good, some not so good. The most relevant observation I have made is that all breeds tend to excel in one or more economically relevant productive traits. Some breeds are biologically similar, some dissimilar, some maternally focused some more carcase focused.

There are breeds that populate tropical environments, some populate more harsh arid environs, and some populate more temperate regions. Within the cattle breeds some are globally widespread across all continents, adapting to all climate types and successfully producing in a vast array of productive systems.

Simmental is globally the most widespread cattle breed, producing profitably in all manner of systems in all recognised climatic conditions. Whether it is a milk focused system, or a carcase/meat based productive regime, Simmental is there producing efficiently and profitably.

No other breed excels in such a wide variety of economically relevant traits, displaying as much versatility and adaptability as Simmental. Simmentals ability to add value to any beef production regime has ensured that in this country, Simmental is numerically the largest exotic breed, the most widely used and historically the most successful of the exotic breeds.

The New Zealand genepool possesses amongst its competitors, the highest availability of milk and the greatest quality carcase characteristics to be best placed to add value either used on its own or blended with the traditional breeds.

2003 was a challenging and successful year for the organisation. We boldly seized the initiative of turning our back on 30 years of successful residence in Christchurch where the breed was established and relocated to the New Zealand Performance Beef Breeders in Feilding. It is Council's view that this move is both strategic and vital to ensure Simmentals success in the next 30

years. It is time for our organisation to focus on issues not overtly peculiar to Simmental, but to add our weight to generic industry issues. If as a breed we apply the same level of initiative and leadership to the PBB and its board's direction as we did in establishing Simmental as the No 1 exotic breed, our future is assured.

Our future lies in actively becoming involved with the contestability opportunity afforded by the recently enacted Commodity Levies Act, and to provide R & D leadership to ensure it's relevant and has a ground-up benefit focus. As seedstock producers, our challenge is to provide industry leadership, not protection of our corner of the industry. The single biggest threat to beef production and our very way of life is border control. Presently we have no influence and little understanding of the consequence of a disease breach, except that the associated cost will be ours. Most disease outbreaks tend to occur in overly intensive management regimes coupled with unacceptable feeding and welfare practices. Currently, as beef producers, some practices of the dairy sector must be of concern to us, that is nitrogen use, large herd density in relatively small areas, effluent disposal and ground water issues. We at SNZ must make sure we contribute to ensure this doesn't ever happen here.

Increasing volume of beef production will not ensure long-term sustainability. To remain as a viable industry we must, collectively across the full spectrum of the industry, focus on adding value. We can add value in a variety of ways. Either by reducing production costs, identification of more efficient/yielding genetics, or by smarter marketing of high value cuts or by differentiating the quality of our product and exploiting consumer confidence in our inherently superior, friendly productive systems.

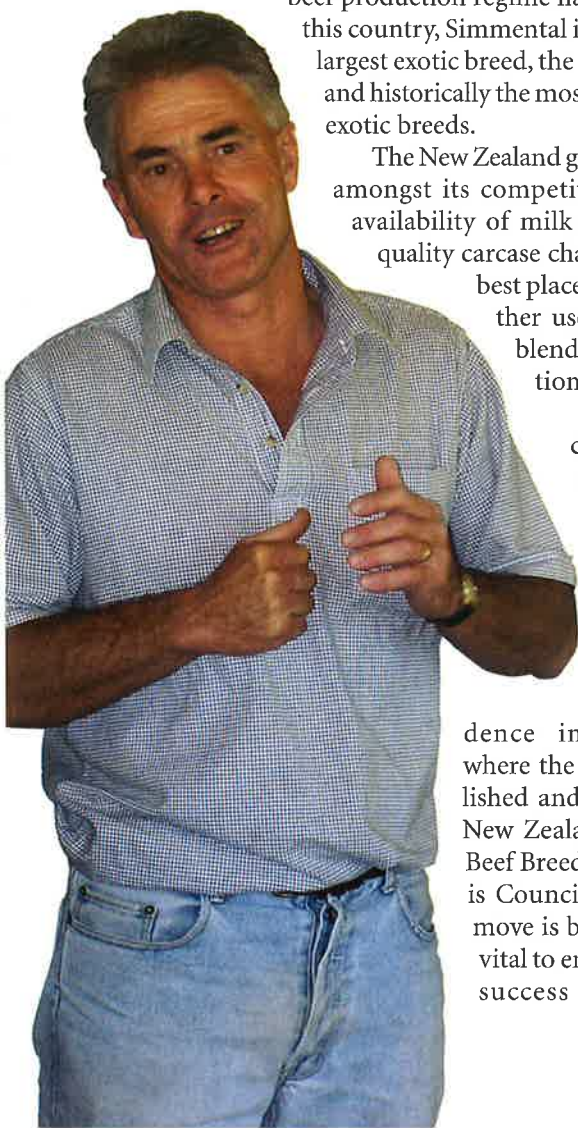
2003 saw the very successful first inclusion of our test station bulls being sold at the Beef Expo, and the intake of the 2nd draft of bulls. Our commitment to carcase quality and predicability saw commitment to the DNA yield and tenderness gene identification programme. This hopefully will be a longer term programme involving SNZ and AgResearch.

Our shift to Feilding will allow us to deliver a more efficient and effective service and allow us to create influence to add value.

It is well to remember Council consists of a group of committed and enthusiastic volunteers creating and seizing initiatives for the betterment of Simmental. These programmes are designed to add value, be educational and promote the virtue of Simmental. I ask you all to embrace and seek understanding of them because ultimately you, as either a seedstock or commercial producer, will add value to your enterprise.

2004 promises to be a year of challenging and exciting opportunity. Simmental will seize those challenges and opportunities, extend its leadership and contribute all we can to enhance the New Zealand beef industry.

Craig Martin, PRESIDENT



new zealand 2003 beef expo



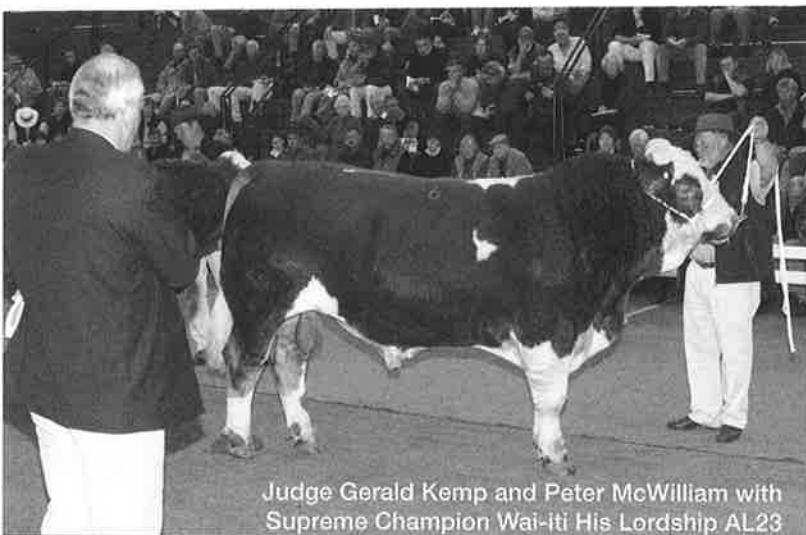
Gerald Kemp

The Simmental Judge at Beef Expo May 2003 was Mr Gerald Kemp of Pouriwai Station near Gisborne. A total of 21 led 2yo bulls and 21 unled 2yo bulls were presented for show and sale in the arena venue at Palmerston North.

"It was a privilege to be asked to judge the Simmental Bulls at Beef Expo 2003 with Bill Loft as my very able associate. We were looking for well balanced bulls with good muscling, and sound structure. In the led classes the bulls were of a very high standard. We found some excellent bulls at the top end of this class. In the unled section the bulls were well presented and sold for good prices."

SIMMENTAL BEEF EXPO SALE RESULTS 2003

ANIMAL NAME	VENDOR	PURCHASER	PRICE
Money more Lonestar AL23(QA)	Enterprise Cattle Co	Waipoapoa Station	5,500
Cornwall Park Lieutenant Dred AL28(QA)	Cornwall Park Trust	H L Sloane	11,000
Waiwhare Lancelot AL141(QA)	Waiwhare Simmental	Waipoapoa Station	6,000
Karewa Legacy AL1	J&L/D&L McNaughten	W A Rouse	9,000
Wai-iti His Lordship AL23(QA)	P C & S M McWilliam	Williams & Kettle	15,000
Wai-iti Landline AL19(QA)	P C & S M McWilliam	Blackbridge Farm	8,000
Pinelee Llewellyn All5(QA)	G M & L E Bain	A H & G M Thompson	5,500
Puketawa Polled Lothar AL118 (QA)	Puketawa Simmentals	D W & F I Glass	7,000
Hampton Downs Leggacy AL14(QA)(ET)	M & N Entwisle	Williams & Kettle	3,500
Prospect AL39(QA)	Mt Prospect P/Ship	W A Rouse	4,000
Waiwhare Latham AL154 (QA)	Waiwhare Simmental	Williams & Kettle	16,000
Karewa Legend All2	J&L/D&L McNaughten	P M Hewitt Ltd	6,500
Wai-iti Mayor AL46 (QA)	P C & S M McWilliam	Glenbrae / Rissington	8,000
Puketawa Lafcadio AL172(QA)	Puketawa Simmentals	Dunshaughlin Farm	6,500
Glen Anthony Laird AL59	A H & G M Thompson	King Country Farmers	7,000
H.D. Louis Vuitton AL123(QA)	M & N Entwisle	Tangiwai Holdings	8,000
Cornwall Park Larsen AL2 (QA)	Cornwall Park Trust	Brancott Farm	11,000
Hampton Downs Lazy Bones AL18(QA)(ET)	M & N Entwisle	King Country Farmers	4,200
Cornwall Park Lone Wolf II AL17(QA)	Cornwall Park Trust	D W & F I Glass	8,000
Haylands Langford AL155(QA)(ET)	Hayland Ltd	Waikato Farmers Ltd	3,500
Money more Latimer AL2(QA)	Enterprise Cattle Co	Wairarapa Livestock	3,700
Terrilynn Lenthil AL138(QA)	Mrs Lynne Sloane	Williams & Kettle	5,000
Cariboo Lieutenant AL21(QA)	W J & E M Mackey	Williams & Kettle	3,500
Wai-iti Luigi AL69(QA)(ET)	P C & S M McWilliam	Williams & Kettle	3,500
Terrilynn Larch AL123(QA)	Mrs Lynne Sloane	Wairarapa Livestock	3,200
Oakdale Lothario AL11(QA)	S D Trotter & E Thaller	I R Caird	6,500
S'State Lochabur AL904(QA)	K B & W A Sixtus	Wairarapa Livestock	3,700
Wai-iti Liberty AL128(QA)(ET)	P C & S M McWilliam	Erewhon Farm	3,200
Willowbrook Leyland AL50(QA)	A R & J A Midgley	J Jackson Trust	10,000
Willowbrook Laird AL51(QA)	A R & J A Midgley	D W & F I Glass	11,000
Prospect AL69(QA)	Mt Prospect P/Ship	Wairarapa Livestock	3,200
Ladburn Lombardy AL227	A A & L A Partridge	King Country Farmers	3,700
Willowbrook Luther AL21(QA)	A R & J A Midgley	Pyne Gould	13,000
Willowbrook Laverick LA22(QA)	A R & J A Midgley	E J & M Strauss	10,000



Judge Gerald Kemp and Peter McWilliam with Supreme Champion Wai-iti His Lordship AL23



Head to head



Judges Gerald Kemp and Bill Lott confer



Supreme Champion Wai-iti His Lordship AL23 with Reserve Champion Cornwall Park Lieutenant Dred



Rear end



Overview of Simmental Show

BEEF EXPO SHOW RESULTS 2003

class 1

2 Year Old Led Bulls born between June 2001 and 5 August 2001

- 1st Waiwhare Lancelot QA
- 2nd Pinelee Llewellyn QA
- 3rd Kapiti Lord William

class 2

2 Year Old Led Bulls born between 6 August 2001 and 12 August 2001

- 1st Wai-iti Lordship QA
- 2nd Cornwall Park Lieutenant Dred QA
- 3rd Wai-iti Landline QA

class 3

2 Year Old Led Bulls born after 12 August 2001

- 1st Waiwhare Latham QA
- 2nd Haylands Lancelot QA ET
- 3rd Puketawa Lafcadio QA

class 4

Test Station Bulls

- 1st Cornwall Park Larsen QA
- 2nd Willowbrook Leyland QA

class 5

Unled Bulls

- 1st Willowbrook Luther QA
- 2nd Willowbrook Laverick QA

supreme champion

Wai-iti His Lordship QA

reserve champion

Cornwall Park Lieutenant Dred QA



Landcorp Waikite Simmental



Landcorp Waikite Simmental is one of New Zealand's biggest Simmental herds producing faster growing quality cattle.



THE RESULTS SPEAK FOR THEMSELVES.

In the 2003 Sire Summary, Waikite Simmentals ranked at almost twice the Australasian Breed Average for growth EBV's at 400 and 600 days:

Average EBV's	BW	200 milk	200day	400day	600day
Australasian Av.	+1.7	+7.0	+14	+23	+24
Waikite Av.	+2.8	+8.9	+20	+37	+45

Nearly 20% of the Australasian Simmental sire trait leaders for 400 and 600 day growth are Waikite bred.

Waikite used 9 sires for mating in 2003 with EBV's for 400 day weight of +49 and 600 day weight of +64.



The EBV'S FOR WAIKITE'S 118 BULLS BORN IN 2002 WERE:

Average EBV's	BW	200day	400day	600day
2002 Born Bulls	+3.2	+23	+40	+49



For more information concerning commercial and stud sales by private treaty, please contact:

Roger Bedford (Farm Manager)
(07) 333 1835

Landcorp Waikite Simmental

PERFORMANCE - GROWTH - GENETICS - PRODUCTIVITY

TARAWAPAKE SIMMENTALS Est. 1989

Hill country bred cattle run under
commercial conditions with emphasis on:

- Docility
- Calving ease
- High growth rates
- Structural soundness

Full performance recording

*Bulls available by private treaty.
Inspections and enquiries always welcome.*

Ray & Laurelle Crosby

750 Awaroa Road
BROADWOOD

Phone/Fax: (09) 409-5133

FALCON HILL SIMMENTALS

758 Glenroy Road, Whangara,
Gisborne

Established in 2002 with the purchase of thirty
four females at the **Pouriwai dispersal sale**.

Bulls have been sourced from
Waiwhare and Rissington.

Stud cattle are run on hill country to produce
terminal sires suitable for crossbreeding with local
commercial cows. These herds are predominately
Angus based cows and their progeny are sometimes
sold as store cattle.

To speed the increase in my herd size I am
interested in buying more compatible registered
Simmental cows this winter.

Enquiries or inspections are welcome.
Contact: Peter Garland, RD3, Gisborne

Phone: 06 862 2606

CENTRAL SOUTH ISL AND SIMMENTAL BULL SALE



june 17th '04

Temuka selling centre-Selling commences @ 1pm

Multi Vendor Sale

Bulls available for inspection from 10.30am onwards

Secretary: Alastair Midgley, Ph 03 6126671.

Management Groups

The most important aspect of making genetic progress involves identifying and quantifying the genetic part of the difference in performance between animals.

Therefore a critical part of performance recording involves standardising, as much as possible, the influence of environmental (non-genetic) factors, which contribute to these differences.

The way this is achieved is by running animals together in groups (contemporary or management groups) from birth, for the period during which performance records are being taken, thereby giving each animal within that group exactly the same opportunity to express its genetic potential.

Grouping therefore eliminates most of the non-genetic effects contributing to performance differences, leaving just the production related to the animals' genetic makeup to explain the performance differences between the animals within the group.

By defining management groups on your input forms you are acting as 'eyes' for the computer, and your decision on which animals go into which management groups will have a direct influence upon the **quality** of your EBVs.

Remember, when creating management groups:

Group like with like.

While the importance of correct "grouping" cannot be over emphasised, excessive grouping is counterproductive. What starts out as a large group of calves, can easily be broken down into groups, which contribute little to the EBVs of the animals or their parents, because the resultant groups are too small.

Other than the management groups defined on the input forms, there is some grouping of animals done automatically when the input information is analysed by the computer (Table 1). By understanding these groupings, it will help you to generate better quality EBVs.

AUTOMATICALLY GROUPED

The input data is automatically grouped by the computer into the following categories:

- 1) Herd
 - Only calves born and weighed in the same herd can be compared.
 - The herd definition can be extended to include associated herds. Eg. Where members of a family have a small number of animals registered in their own name, and run as part of the main herd, on the property.
- 2) Calving Year
 - Only animals born in the one calving year are compared.
- 3) Sex of Calf
 - The computer will only directly compare calves within sex groups ie. Male with male, female with female.
 - Males that are weighed initially as bulls and then castrated will have their first weight compared with all other males, and their second weight only with the steers. Therefore:
 - a) Keep as many males as possible entire until first weighing eg. If castrating at 150 days, weigh all bull calves then, rather than weighing steers and bulls separately at 200 days.
 - b) If you want to divide a group of cows, run those with bull calves separately to those with heifers.
- 4) Birth Number
 - Singles are not compared with twins.
- 5) Birth Status
 - Natural calves are compared with other natural calves, but not with ET calves.
 - ET calves' performance information is also sub-grouped according to the breed of the recipient dam.

TABLE 1: Aspects of the Grouping of Data in, for example, BREEDPLAN

AUTOMATICALLY GROUPED	AUTOMATIC, BUT CAN BE BREEDER INFLUENCED	BREEDER GROUPED
1. Herd 2. Calving Year 3. Sex of Calf 4. Twins/singles 5. Birth Status (ET) 6. Dam Age 7. Blood Percent (grade)	8. Weight Date 9. Calf Age (Slicing) (no cumulative)	10. Breeder Defined Management Groups — birth — post birth

TRAIT	AGE RANGE (days)	STANDARD# AGE (days)	SLICING PERIOD
+ Gestation Length	520 (20 yrs)	-	6 months
Birth Weight	0	-	45 days
✧ 200 Day Milk	760 days (20 yrs)	-	-
200 Day Weight	80-300	200	45 days
400 Day Weight	301-500	400	60 days
600 Day Weight	501-900*	600	60 days
Scrotal Size	300-600	400	60 days
+ Days to Calving	600-3650	-	6 months
Scan Fat	300-800	300 kg carcass	60 days
Scan EMA	300-800	300 kg carcass	60 days
+ Calving Ease	600 (5 yrs)▼	-	4 months
900 Day weight	751-1100*	900	60 days

Each trait is adjusted to a standard age before comparisons are done.

+ These are measures on the cow when the calf is born.

* Where 900 day EBVs are calculated, the maximum age of the group for 600 day weight EBV is 750 days.

▼ For calving ease, all cows older than 5 yrs are treated as "mature cows".

✧ The 200 day milk EBV of the cow is estimated from the 200 day weight of the calf. Cows older than 12 years are treated as mature cows.

6) Dam Age

- Calves out of heifers, up to 3.5 years of age are not compared with calves out of older cows for birth performance traits (birth weight, gestation length and days-to-calving). Therefore:

"Use more than one sire on your heifers to generate better quality EBVs for these birth performance traits."

- The following practices **will not** affect the birth performance groups, however they **will** affect the post-birth performance groups:
 - Joining heifers earlier than the main mob.
 - Running heifers separate to the main mob of cows.

7) Blood Percentage (Grade)

Where a herd is grading up to purebred status, the performance of the graded calves is analysed separately to the performance of the purebred calves as follows:

- Performance of first cross (1/2 bred) calves is not used.
- Performance of second cross (3/4 bred) calves is only directly compared to the performance of other second cross calves.
- As far as the performance analysis is concerned, third cross (7/8) and higher grade calves are considered purebred and are analysed together.

Therefore from a management perspective, if you need to split cows into different groups prior to weaning, separating base and first cross cows, will not reduce your calf group sizes for the BREEDPLAN analysis.

AUTOMATICALLY/ BREEDER GROUPED

8) Weigh Date

- Only animals weighed on the same date are compared together. If an animal is missing at weighing, it is analysed in a separate group for the following weighing.

"You should ensure that all animals that are run together are weighed on the same day."

9) Calf Age

In comparing animals for analysis, the computer divides them into age (slice) groups. "Slicing" is done to ensure that calves being compared have been run under comparable seasonal conditions.

- For example, the age "slicing" interval for 200 day weight is 45 days. After this the next calf is "found" by the computer, and this becomes the start of the next "slice" group for analysis.
- Each trait has a different "slicing" interval, but most are either 45 or 60 days.
- You can influence the number of 45 or 60 day "slice" groups by the compactness of your calving.

"By keeping your calving spread compact, the computer will have the maximum number of calves for comparison within the age "slice" groups, and the quality of your EBVs will be enhanced."

continued on the next page...

BREEDER SUPPLIED GROUPING

10A) Birth Management Group

This group allows you to account for different treatments of the cows prior to the birth of the calf. For example, where one group of cows may have had access to a different level or quality of feeding, which may affect the birthweight and/or calving ease and/or gestation length when the calf is born.

*"Note that the birth management group does **not** carry over to the weaning weight."*

If you believe that the conditions affecting the cow prior to the birth of her calf, will also affect the calf's weaning weight, then you also need to recognise this in the allocation of calves to your 200 day weight management groups. For example, a cow that was sick (prior to the birth of her calf) and did not recover fully, and did not milk very well because of this, should have its calf placed in a separate management group both at birth and at weaning.

10B) Post Birth Management Groups

If you want to generate **quality** EBVs this is one of the most critical areas of performance recording.

Animals that have received different treatment or management that will influence performance should be allocated different management group codes. This treatment may be deliberate, (eg when some yearling bulls are used for mating and others are not.) or accidental (eg if a calf is sick.)

Some examples of where animals should be recorded in separate management groups are:

- Sickness gives some calves a permanent setback.
- Some animals are fed for a show or sale.
- Some animals are fed grain, others only grass.
- Animals reared in different paddocks, in which feed is of different nutritional value.
- A bull has been fighting and clearly lost weight prior to recording.
- Yearling bulls used as sires compared to those not used as sires.
- Different stages of pregnancy for heifers (try to weigh before joining and certainly before two months following conception.)
- Animals weighed on different scales.
- Calves weighed straight from the paddock as compared to those off feed for say 3 hours or more.

PERFORMANCE GROUPS IN PRACTICAL TERMS

What BREEDPLAN requires, to maximise the use of your performance information, is not always compatible with how you manage your animals. However, if you are aware of the needs of BREEDPLAN analysis you will be able to optimise the use of your performance data within the constraints of your management.

There are four major areas, concerning management groups where the decisions made by you can impact on the EBVs that are calculated for your animals:

- 1) **Assign animals to different management groups where they have been treated differently on the property.** This may have been intentional (eg feeding) or accidental (eg sickness). However, be careful not to create unnecessary management groups as this conflicts with point 2.
- 2) **Run animals in large groups.** EBVs are calculated by comparing animals within groups that have been treated alike. Larger groups provide more information (head-to-head comparisons) for EBV calculations. Maintain large performance group sizes by:
 - Having a compact calving.
 - Reallocate cows to their next mating group prior to this calving, so that you can remix cows into groups from one year to the next.
 - After joining, run cows in as big a group as practical, rotating them through paddocks rather than keeping two or more mobs in separate paddocks set stocked.
 - Weighing all animals in a group on the same day.
 - Weigh all animals before dividing into groups, for example:
 - Weigh males (and females) before castrating some of the males.
 - Weigh all calves/yearlings before taking out the show team for special feeding.
 - If you need to divide management groups do so using the way they are automatically grouped, if possible:
 - blood percent (grade) of cow
 - sex of calf
 - ET calves vs non-ET
 - Prior groups (eg if you need to split the yearling calves, use the automatically derived management groups as a basis for this.)
 - For a given age, do all the relevant performance measures on the same day. For example, at yearling age you may want measurements on weight, scrotal size and ultrasound scanning.
- 3) **Maintain Genetic Comparisons within groups.** The direct comparisons within a group "drive" BREEDPLAN. These comparisons are relevant to the individual animals and to their parents, particularly sires. Therefore try to avoid:
 - **Single animal management groups.** This is a real problem for show team animals. Sometimes however, it is unavoidable (eg sick calf)
 - **Single sire management groups.**
 - Comparisons between the progeny of sires are an extremely important aspect of performance recording. The performance information on a group of calves that all have the **same sire** contributes **nothing** to the **genetic merit of the sire**.
- 4) **Maintain Pedigree links between groups.** The more pedigree links between the groups, the more reliable the EBVs.

NOTE: The Breedplan computer programme is used merely as an example in this publication. There are other performance recording service providers involved in servicing the NZ beef industry.

HERD 1424

NUWELAND SIMMENTALS

Established 1987

Polled and traditional

- top performing bulls
- hill country bred
- performance recorded

Danie & Joan Marais

*P.O. Box 537, Inlet Road,
Kerikeri, Bay of Islands*

Phone: (09) 407-9039

Fax: (09) 407-9013

Email: nuweland@xtra.co.nz



After 10 years buying Simmental bulls
we are now in the business of selling them.

- MODERATE BIRTH WEIGHT
- EASY CARE
- GREAT FARMING

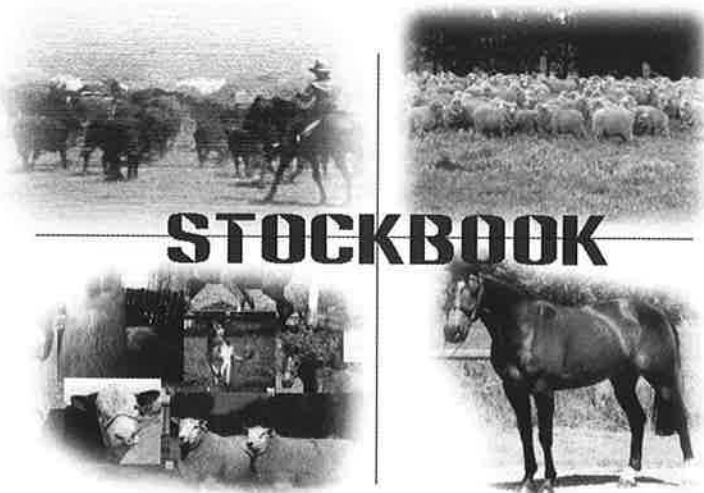
For paddock sales contact:

ROB KIRK

phone: (06) 3258 432

cell: 0274 474 626

email: rob.adele@inspire.net.nz



STOCKBOOK – the all new “Cattle Plus!”

livestock management software

New features:

- > Direct link two way link to latest – release scales data collectors
- > Import from any performance analysis system (Breedplan, EPD, etc)
- > Brand new fully featured flexible entry and display laptop screen
- > Web enabled for those that want full group data transfer
- > Multi species capability eg: sheep, deer
- > Add Photo of animal
- > Commercial Farmers add animal via scales
- > Reports can transfer to Excel for extra analysis

Contact: **Corrine Kearney** for more information

Free Phone: 0508 22 88 53

FARM ASSURANCE PROGRAMME

The following is the text of an address delivered to SimmentalNZ members attending a BeefClass Structural Assessment workshop at Alastair Midgley's 'Willowbrook Farm' in February this year, on behalf of the Alliance Group.

With outbreaks of FMD, BSE & E.Coli throughout the world consumers are becoming more and more demanding.

The Farm Assurance Programme (FAP) initially was targeted for the UK, however it is now expanding into Europe and more recently questions are being asked about FAP from North America customers.

Animal welfare issues such as shelter, shade, transport times for animals, docking & castration, time off feed & animal remedy applications are all coming in for close scrutiny.

Annually we are audited by a number of overseas customers. More and more the audit is focusing on our traceability, documentation and animal welfare from farm to plant.

Farm visits are a priority for the overseas auditor. They retrace the product from their stores back to the farm.

They (the overseas customer) request the audit history of the farm involved and read the companies independent audit results.

They also request an overview of our FAP administration as well.

More recently, you have adopted:

- ◆ "Farm Assurance Programmes"
- ◆ livestock presentation standards
- ◆ ASD forms

with (if we are all honest) probably somewhat less than wild enthusiasm.

Farm Assurance

Farm Assurance compliance has increased dramatically since the Farm Assurance auditing on farm has taken place over the last 7 years. Presentation of sheep & cattle have certainly improved.

These changes have not been asked for because it is just a good idea.

Don't blame your company representative – he doesn't really enjoy listing a "Farm Assurance" audit issue of the floor grating in the dog kennel being too wide, or in the case of our plants, not allowing glass sauce bottles in the dining room in case some glass ends up in meat products and no staples in papers carried onto the plant.

These issues have been driven by the market – principally European legislation from the ever-growing bureaucracy in Brussels – but even more specifically, UK retailers concerned with animal welfare activism, and consumer protection.

You are probably thinking about now – why are the companies accepting all of this?

We must accept at least some of these programmes or our meat products will reduce in value and lose retail shelf space to those other proteins (chicken and pork) whose cheap prices seem to blind many consumers to possible welfare or health issues.

Lamb & beef cannot compete with chicken and pork on price – and we do not want it to – natural quality is our point of difference.

However much you dislike any imposition, some standards are essential to maintain that international point of difference – natural, quality New Zealand beef & lamb. Even the Australian export sheepmeats industry has some farm assurance standards and animal welfare requirements ...

So, where from here?

Firstly, 'Farm Assurance' programmes and livestock presentation standards will continue and will get tighter for lamb, cattle and deer. In addition, a transport 'Farm Assurance' programme has been developed. We will however be as practicable as possible.

Presentation Standards when sending cattle for slaughter

- ◆ Empty out before transporting (12 hours)
- ◆ Cattle waiting for transport must have access fresh water
- ◆ Pen horned cattle separately
- ◆ Do not mix groups of unfamiliar cattle – it causes stress and raises pH levels
- ◆ Avoid sending in dirty cattle (mud dags)
- ◆ If animals cannot bear weight on all four limbs do not send them – this is an animal welfare issue.
- ◆ Cancerous Eyes / Dislocated hips etc – must have a Vet Declaration form before being sent for slaughter
- ◆ Clean cattle reduces washing
- ◆ Improves carcase hygiene from fewer contamination sources
- ◆ Lowers macro & micro counts
- ◆ ASD / Ear tags – all cattle must have a correctly completed ASD when being sent for slaughter.
- ◆ All cattle must have a Primary or Direct to Slaughter ear tag

Loading Facilities / Yards

- ◆ Facilities must be capable of servicing multi deck trucks
- ◆ Stock yards should be maintained to minimise mud and all protruding objects that could injure an animal be removed

Secondly, Alliance Group will pass on market signals and direction, bearing in mind the timeframes necessary for you to change farm practices on both sheep or cattle genetics.

Over the last 10 or so years, exporters have finally started to provide more consistent signals to producers.

Better Weights & Grades

Farmers were wanting a clear signal of what weight and type of carcass is required.

The Market Choice grade for beef was introduced. Although descriptive and tight, 270.5kg-320kg for cattle, it was a signal that this was the type of carcass that was required.

Conformation

Hindquarter well developed with a high degree of convex muscle profile

Loin	full length and a minimum eye muscle depth of 50mm
PH	not to exceed 5.8
Fat Cover	3mm to 8mm over the 12 th rib

Producers' response to these more recent and consistent signals has been remarkable. Because there is more diversity within any breed than across breeds, no one breed will likely be "best" for all farm circumstances:

- ◆ land types;
- ◆ climate;
- ◆ scale of operations.

or any individual preferences.

We should not lose the genetic diversity available in New Zealand's herds. This is likely to be of significant value to producers in the future – the mystique and variety of beef.

Pork, chicken and even dairy producers, on the other hand, are significantly reducing the number of principal sires used - subjectively, this may be starting to homogenise their products to an extent that consumers are noticing sameness and blandness.

These are not characteristics we should ever want associated with our highly valued and priced, quality, natural New Zealand lamb & beef.

— MURRAY BEHRENT, Alliance



For all your Artificial Breeding Requirements

- Embryo Transfer Technology
- MAF Approved Semen & Embryo Export Centres.
- Bull Fertility Evaluations
- On Farm Semen Collection & Processing

Tararua Breeding Centre Ltd

Office Phone/Fax: (06) 3764955 Robyn How Mobile (027) 2800845, Email r.how@xtra.co.nz

Premier Genetics NZ Ltd

Office Phone: (09) 2360616 Fax: (09) 2360327 Email: premiergenetics@xtra.co.nz

Eddie Dixon: Mobile 0274 97345 John Crawford 027 222 7782

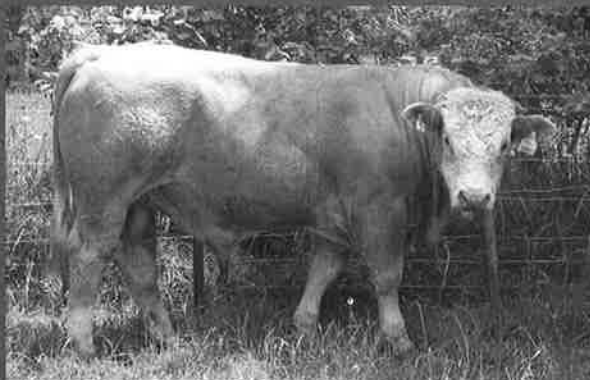
Or visit our web site at www.premiergenetics.co.nz

"The Approachable Team"

Waitaua Simmentals



Warren & Margaret Manning



WAITAUA MACHO by SINGING HILLS DAMIEN

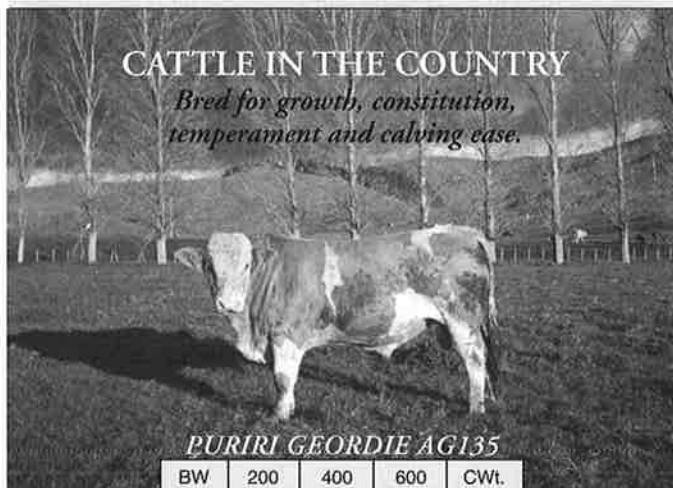
Congratulations to Steve and Ewald of Oakdale Simmentals on the purchase of our stock. We wish you all the very best for the future. We have enjoyed breeding Simmentals however feel it is time for a change in lifestyle for us.

Phone/Fax (09) 435 3071
Waitaua Road, Kauri, Whangarei
Postal Address: Box 8102, Kengsington, Whangarei
Email: wmmanning@xtra.co.nz

PURIRI SIMMENTALS

Still breeding the best value for money.

**25 Q.A. Bulls for sale
JULY 5th, 2004**



CATTLE IN THE COUNTRY

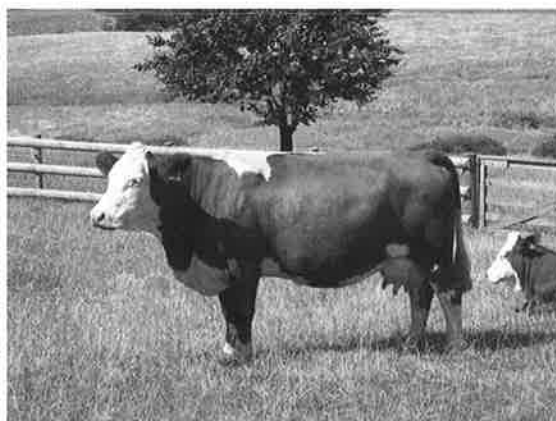
*Bred for growth, constitution,
temperament and calving ease.*

PURIRI GEORDIE AG135

BW	200	400	600	CWt.
+3.7	+23	+30	+44	+23
93%	90%	90%	89%	79%

John and Helen Ellis • R.D.3. KAITAIA
Ph: (09) 406 0201 • Fax: (09) 406 0205
Email: puririsimmentals@xtra.co.nz

OAKDALE SIMMENTALS



We have expanded!!!
Our Simmentals are now at our
farms in Warkworth and Kaikohe.

Over the years we have slowly
been building up our herd with
purchases of quality animals from
Tukaze, Springhill, Karewa, Singing
Hills, Pouriwai and now Waitaua
and Tawhero Simmentals.

Polled or horned rising one and two year old bulls available.

For further details, phone STEVE TROTTER or EWALD THALLER
(09) 524 9472 evenings or (021) 1156 092
Email: oakdalesimmentals@xtra.co.nz

Brooklands Simmentals

Herd No. 726 • • • Established 1972

Open Day

**Wed 5 May
10:00am**

Producing good honest cattle under commercial conditions

Selected for:

Structural soundness • Superior growth rates • EBVs
Ease of calving • Temperament • Fertility



**Bulls for private sale from
Open Day onwards**

Herd sires include Growth Rate Traitleaders
Waiwhare General, Karewa G-Man and Waikite
AG33. Also selling in-calf and open females.

Contact:

Colin & Catherine Hutching • Phone (06) 374-1802
Nigel & Lisa Hutching • Phone/Fax (06) 374-5181
329 Rakaiatai Rd, Dannevirke
or your studstock agent.

**WHATEVER YOUR TARGET
MARKET.....top score everytime!**



**"Genetically superior Bulls
showing soundness,
performance and strong
carcass qualities"**

Keith Taylor
Waiwhare Stud Master



**WAIWHARE
SIMMENTAL**

FOR FURTHER INFORMATION CONTACT KEITH TAYLOR 06-874 2889
OR ANY STUDSTOCK OR LIVESTOCK AGENT.

NEW ZEALAND SIMMENTAL 2004



BEEF CLASS

STRUCTURAL ASSESSMENT

THIS NEW INNOVATION initiated by Simmental NZ is a winner! It opens ones eyes to their cattle and enables prospective buyers to gauge through the use of icons that are to be displayed alongside the animals EBVs, the propensity an animal has towards certain basic indicators of the set-up it possesses.

Recent field days held here at Cornwall Park, Makoura Lodge and Willowbrook in the South Island have been well represented by members, eager to take up the information flow surrounding the Beef Class system. I would suggest to those that have not yet had the opportunity to examine Beef Class to contact the Simmental NZ office at Feilding and have the literature sent out for your interest.

The Beef Class structural assessment system is being adopted breed-wide by Simmental New Zealand and it is positioned to become a valuable tool to all beef farmers.

A series of steps were taken in New Zealand and Australia in the past three years to reach the structural assessment method that is being implemented today.

It has involved visiting herds, ranking and listing Simmental breed characteristics and refining of that list. New Zealand also has its own accredited Beef Class structural assessor Wayne McLaren.

Simmental New Zealand councilor Peter McWilliam, who farms at Gladstone in Wairarapa says they want to make the assessment criteria useful and easy to use for stud and commercial cattlemen.

Previously breeders had their herd assessed by outside accredited assessors. But three workshops around the country mean about 70% of New Zealand's Simmental breeders have been schooled up on the structural quality assessment method.

Simmental is the first breed society to adopt the method across the entire breed. Until now there have only been individuals in New Zealand and Australia using the technique.

Councilor Alastair Midgley, who farms in South Canterbury, says the breed's mission statement for the quality assurance programme is to "meet the needs of the New Zealand beef industry by supplying performance assured genetics focused on customer expectations."

He says the decision to adopt the Beef Class programme is one of the steps the Simmental Council took to address criticism from commercial breeders and beef farmers on structural and temperament problems across all breeds.

A pro-active response led to the introduction of the voluntary quality assurance programme in 2001.

New Zealand's only accredited Breedplan and Beef Class assessor Wayne McLaren is also one of New Zealand's three ultrasound beef scanners. McLaren attended a structural assessment accreditation course in Australia to the title.

He also attended the three Simmental Beef Class workshops hosted in New Zealand taking breeders through the Beef Class assessment method and answering questions on it.

He says structural scoring, can be used to describe sale animals and the scores included in sale catalogues. Some of the characteristics include: Front and hind feet claw set, front and rear feet angle, rear legs side and rear view, muscle score, temperament, sheath, and udder scores and scrotal circumference measurement.

Guidelines are issued for the assessment system and include diagrams and the scoring scale – five is generally the ideal score with scores of four and six slight variations from ideal and any animals recording those scores are acceptable in any breeding programme. Scores of three and seven show greater variation, but would be acceptable in most commercial breeding programmes, but seedstock producers should be wary. Scores of two and eight are low scoring animals and should be carefully inspected before purchasing and scores of one and nine should be considered culls.

Structure scores should be used as a guide only, not a guarantee.

McLaren challenged beef farmers to spend one day examining their cattle using the structural assessment form and says he believes they would learn more about their herd.

Scores are allocated using icons showing worst and best case scenarios as guides.

The best place to score stock is in the yards. It's recommended to apply some pressure (one at a time in the yards) especially when it comes to evaluating temperament. And a smooth hard surface for foot scoring is essential.

He says once these scores are used in bull sale catalogues it will reduce the need to "eyeball" a potential purchase before the sale. The scores are designed to draw a picture.

"It will give you a good idea if it's worth driving 200km to buy that bull," says Midgley.



At the end of the workshop he said all the suggestions made by breeders on the format of the assessment form will be considered when refining the criteria form. It has already been refined from 21 traits when the programme began in 2000.

Midgley says the structural evaluation form is mainly for culling and selling purposes. It is also intended to provide an accurate description of an animal without sighting it.

Wayne McLaren says the system will move the Simmental breed forward "en masse."

At this year's Beef Expo, all Simmental cattle will be scored using the Beef Class system and some of the information will be printed in the Expo catalogue.

Midgley says Simmental breeders should aim to assess females in their first lactation. The data should then be sent to breed manager Errol Harvey at Performance Beef Breeders in Feilding.

More workshops are scheduled for next year to consolidate the method and commercial breeders and stock agents will be invited.

— NATALIE CAMPBELL



HOW THE STRUCTURAL ASSESSMENT METHOD CAME ABOUT

2000

Criticism from farmers about the structural soundness and temperament of stock prompts a "pro-active" response.

2001

The introduction of the voluntary quality assurance programme is made. This saw professional classifiers in Australia visit Simmental herds developing the assessment method.

2002

The process in New Zealand is refined by classifiers Wayne McLaren and Nathan Cooper who reduce the number of assessed traits to simplify the programme.

2003

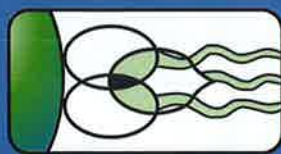
Many stud breeders were using the QA programme and because of the grounding given by the professional assessors over the previous two years the Simmental Council decided to base future stock audits for the QA programme on individuals assessing their own stock.

2004

To encourage more breeders to use the QA programme the society introduced the Beef Class structural assessment system. It replaces the stock audit carried out in 2003 by Wayne McLaren and Nathan Cooper.

There are three aspects of the quality assurance programme for stud breeders. They are:

- 1 Beef Class structural assessment system. Individuals assess their own cattle.
- 2 Office compliance. Punctuality of record keeping, paying accounts etc.
- 3 Processor compliance. Certificate from a processor stating your audit number.



SPERMEX LTD

SPERMEX – Worldwide leading suppliers of the best Simmental Fleckvieh and Brown Swiss bloodlines for Artificial Insemination.

With over 30 years of experience in quality breeding programmes and consultancy,

SPERMEX has an international proven track record of improving your herd's health and wealth accordingly.

Semen from the following 100% Simmental/Fleckvieh proven GERMAN BULLS is now available. The bulls have been stringently selected for their good temperament, low birth weight/easy calving, structural correctness, quick growth, fertility, milkability and longevity.

Suitable for stud or commercial operations requiring proven genetical productivity and increased profitability. All bulls are Breed Surveyed Class I; each survey/analysis is based on a combination of results from the named bull and his sons and daughters.

All enquiries are welcomed, please contact Barbara or Janine to discuss any aspect of your breeding requirements.

High Valley Simmentals
tel/fax: 09 232 7842
email: info@spermex.com

Barbara's mobile: 021 588 099
<barbara@spermex.com>
Janine's mobile: 021 555 858
<janine@spermex.com>

SPERMEX semen is stored and distributed by **PREMIER GENETICS.**

COME WITH US INTO THE FUTURE WITH

Herd with LAKI 2 and POLIK progeny



POLIK (left) LAKI 2 (right)
Calves in GERMANY



HORNIG ET PP
HB-Nr. 10/165691



04/04/2000

SIRE: Hornist PP • DAM'S SIRE: Holzer PP
Interesting for dairy breeders, Strong Constitution,
Longevity, Excellent pigmentation.

POLLED GERMAN FLECKVIEH

LAKI 2 PP HB-NR. 10/403069



28/04/2000

SIRE: Landfried PP • DAM'S SIRE: Bossan P
LAKI 2 – Polled, Calving Ease, Dark pigmentation,
92% Eye Pigment Progeny

POLIK PP HB-Nr. 10/403044



29/06/1999

SIRE: Pollux P • DAM'S SIRE: HORNIST PP
POLIK – Polled, (Bloodline Posco),
Calving Ease & sire of our bull in the Test Station
HORNIST PP – Polled, has a very good linear description.
(Muscling of his Daughters 133!!)
& excelling in correct feet and legs.

POLIK (left) LAKI 2 (right) calves



LEON PP HB-Nr. 10/403050



11/03/2000

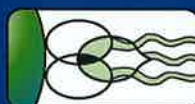
SIRE: Leo P • DAM'S SIRE: Hansi PP
Hansi PP Sieger 2002 & Leo P was Reserve Sieger

POKER PP



Best Homozygous Polled Bull
Best Simmental Bull 2000 (State of Baden Wurttemberg)

An outstanding performer • Reg. No. 991784
DOB 21/02/98 • Beef Index 116 • Daily Gain 1412g
3 generations polled – excelling in muscle,
conformation, temperament



SPERMEX LTD

High Valley SIMMENTALS

Presenting one of Germany's current top producers...

100% FLECKVIEH



Weight: **1330 Kgs** Withers Height: **160cm** Chest Girth: **260cm**

Sire: **Baldrin** Dam's Sire: **Stress**

"N" Calves by BRASIL & POKER
can be viewed on the farm.

Calves due this year by BRASIL, MALARD & POKER.
BRASIL'S Dam "GIESELA" had 8 normal calvings in 8.8 years.

Alternative bloodline for milk and beef.

BREED SURVEY: CLASS 1

(Based on results of sons
and daughters).

Total Merit Index: **124**

Beef Value: **118**

Evaluation of 51 daughters as young
cows scored following points:

Frame: **122**

Muscling: **97**

Conformation: **108**

Udder: **118**

14,682 daughters averaged 5,623 kg
Milk 1st lactation.

Barbara Glover

HIGH VALLEY SIMMENTALS

1478 Miranda Road

RD1 Pokeno, South Auckland

Phone/Fax (09) 232-7842

Mobile (021) 588-099

email: barbara@spermex.com

Visitors always welcome

Simmentals in Paradise



When Simmental Farmer and former top breeder, Jim Veint arrived at 'Arcadia' in 1954 after leaving Timaru Boys' High school, it was one very large paddock. Jim's father, Lloyd, a butcher from Queenstown, and a keen hunter had bought the property for its deer shooting potential in 1951 from Alex Reid, a farmer of Gallaway, near Alexandra.

Reid had been at 'Arcadia' since 1920, having bought the property from the original owner, Joseph Cyprian Fenn. Fenn, an interesting character, was not a remittance man; he came out to New Zealand in 1880, after a spat with his father back in England. Father had 'moved' in on Fenn junior's fiancée, when he brought her home to meet the folks. Father won, son lost and young Joseph sailed for New Zealand where he bought numerous small holdings up the Dart Valley north of Glenorchy. Amalgamating them into one farm, 'Arcadia', he ended up with a property of 1,400 acres freehold, with a further leasehold block of 1,500 acres up the valley. The up river property was the site of a failed attempt at gold mining. A flood destroyed a dredge that had been carted in and assembled.

A young lady, Poppy Aitken, of the Paradise Guest House – the only neighbour up valley, caught his eye and he bought her a top thoroughbred horse to run in the local Glenorchy Race Meeting for the guest house.

When Poppy spurned his advances, however, he bought an even better horse for the Glenorchy team to ride against Poppy.

Fenn was so put out by the rejection of his offer of marriage that he had the large house at 'Arcadia' built, perhaps

to show her what she had missed out on. But he never lived there, preferring to stay in the small hut up near the bush margins nearby.

Fenn was a champion rower in England, a proud holder of the title of 'Champion of all the rivers of England' and a member of the Cambridge crew participating in the only dead heat in the history of the Oxford-Cambridge Boat Race in 1877. The medals and trophies, plus a coat of arms remain with the Veint family, who live in the splendid two storied wooden house with its turrets.

When the Veints came to 'Arcadia', the cattle herd was made up of Hereford and Shorthorn cattle that had been there since Joseph Fenn's days.

When Jim came home from school, he had 800 Romney ewes and 80 cattle to farm, and one large paddock with very little in the way of fencing.

Jim took over the farming and set about fencing and lifting the cattle and sheep numbers.

The lease blocks up the valley were within the Mt Aspiring National Park and heavily eaten out by the large deer herds. Culling of these deer was carried out through the late 1950's and early 1960's. As the deer numbers fell, Jim increased the sheep and cattle. Wild cattle had to be shot and Jim increased the cattle numbers to over 400.

Grazing the lease land allowed Jim to save pasture on the home block for calving. By the mid 1970's Jim had fenced the top block of the home farm into six paddocks of about 80 acres each and this, along with top-dressing allowed the stock numbers to be lifted to 8,000 stock units.



In the early days of the Simmental in New Zealand, the breed took Jim's fancy. Between 1971 and 1977 he ran an AI programme, doing 500 inseminations each year.

Jim travelled to Europe in 1972, 73, and 74 as a guest of the Swiss and German Simmental breeders. He also visited the UK and Canada.

As a result of the overseas trips Jim imported some top heifers from England and Scotland. Another breeder, also shopping in the UK, remarked that Jim Veint had 'picked the eyes out' of the cattle available.

Jim's emphasis when selecting stock was always on Structural Soundness.

Jim achieved success in 1976 selling two Simmental bulls by the sire 'Canadian Extra' to the Australian showbiz personality and entrepreneur, Harry M Miller; Miller's studmaster was none other than a young Peter McWilliam, a past president of SimmentalNZ.

Both of these bulls went on to become Supreme Champion at the Sydney Royal Show in consecutive years. Jim *still* has some straws of Canadian Extra.

In 1977, Jim topped the National Sale in Christchurch with a Simmental heifer, and also sold five bulls and received 1/3 of the total sale income generated from the 31 Simmental bulls offered.

This was the peak for 'Arcadia Simmentals'. The remote location of this beautiful farm in the Southern Alps made it difficult for buyers to view his cattle and hindered growth of the stud cattle business.

To maintain this high standard required a lot of effort and Jim switched to other interests, although he continued growing Simmentals commercially on these healthy,

mountain pastures. He still sold a few bulls locally for quite a while but has withdrawn from the national scene and moved out of stud stock.

Jim has played around with Gelbvieh, Simmental and Hereford crosses – early efforts at what is sometimes called 'composite' breeding – but he has now moved back to straight Simmental cattle, buying top priced bulls from 'Willowbrook' at the Beef Expo sale in 2002 and 2003.

Jim reckons the 'Willowbrook' polled bulls "nicked well" with his cows, producing very sound, fleshy, quiet calves, which are highly sought after. Today he sells 180 weaners each year from the 250 cow herd run at 'Arcadia'.

Over recent years, 'Arcadia's' farm income has been supplemented by commercial filming rights – LOR and all that. A mini-series 'Typhon's People'

starring Michael Hurst, and Emma Thompson's husband Greg Wise, was shot on the shores of Paradise Lake below the house in the early 90's.

Countess, one of Jim's Simmental cows, was the star of a commercial for 'MILKA', a European chocolate brand. Make up was required; the cow was painted purple for the film shoot! A double was trained up just in case Countess became too tired. Countess worked for \$3500 and her double a mere \$1500.

Jim also farms 2000 ewes – down from the high of 3000 in the late 80's.

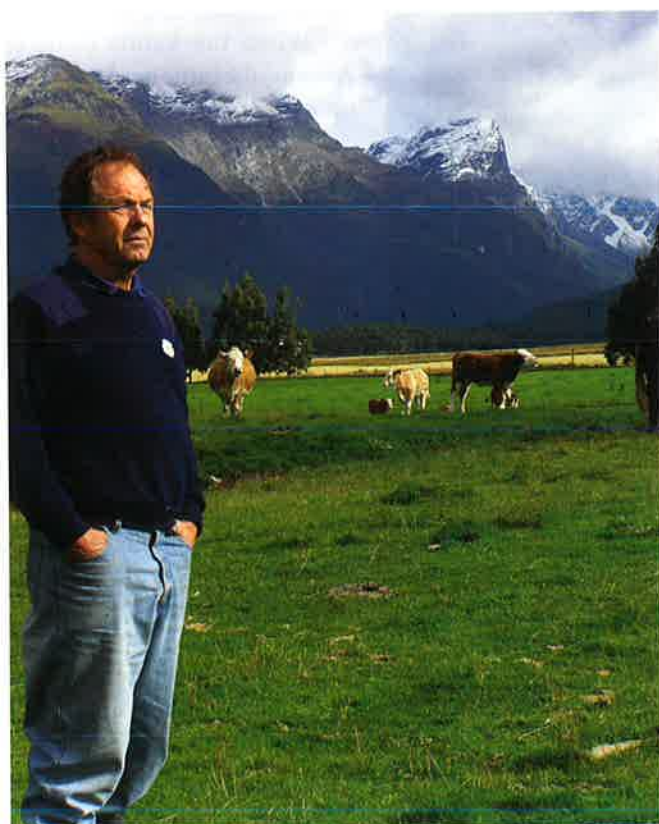
Sheep are important in management of the ragwort and thistles. Contractors are used for the fencing, shearing and help with marking.

The soil is fertile, and grows great Matagouri (a good guide to fertility for early settlers). When it comes to fertilizer, liquid application of 'Midland Pasture fine' courtesy of Geoff Taylor from Blenheim, is one of Jim's secrets. He swears 'roses and veges do well on it too'. He gets lambs away at 18kg now – previously managing only 16kg.

The health of all the animals has improved since using this brew.

In contrast to the heady days of the 70's, Jim's emphasis nowadays is on low inputs of labour and materials –farming sustainably in his fragile Mountain landscape.

— ERROL HARVEY





34 BULLS FOR AUCTION
selected from our 170 cow herd

AILSASIMMENTALS • June 9th



HILL COUNTRY BRED for HILL COUNTRY USE.
S.H.1, South of Taihape • Phone Alastair Miln 06-322-9883

Beresford Simmentals

Warren & Stephanie Burgess
Puketiro, R.D.2 Owaka – Ph/Fax: (03) 415 8019

***Your last chance
to purchase sons
of East Dome AE 26
and Waingaro AF 20***

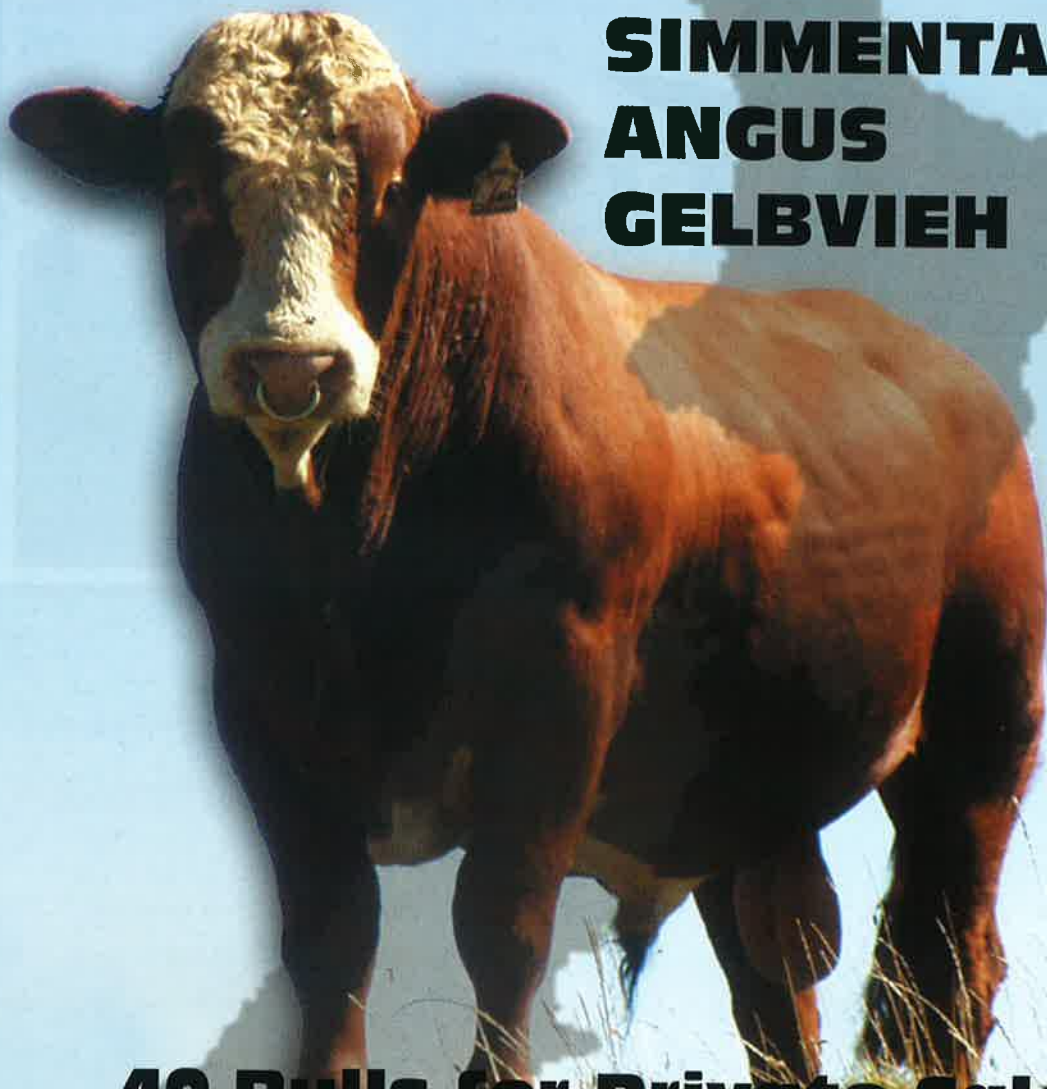
***TB C10 and sale
tested clear***



Part of Beresfords Sire Power

***Combined Owaka Bull Sale
WEDNESDAY 26th MAY
at 2.00pm (on concrete)***

HILL COUNTRY BULLS FOR ALL REGIONS



**SIMMENTAL
ANGUS
GELBVIEH**

**40 Bulls for Private Sale
any time from our
Open Day 5th May
onwards**



Peter & Sue McWilliam • Admiral Hill Rd, Gladstone, Masterton.
Telephone: 0-6-372 7724 • Facsimile: 0-6-372 7770
Mobile 025-222 7649 • email: p-s-mcwilliam@xtra.co.nz

Royal Show 2003



THE 73RD ROYAL NZ SHOW was hosted by the Hawkes Bay A & P Society at their Tomoana Showgrounds in Hastings from the 23rd to the 25th October 2003.

The total of 88 beef cattle entries included a strong contingent of 24 Simmental cattle entries from four exhibitors, namely:

Susan Wylie – **The Ratalea Stud near Takapau**

John & Helen Hammond – **The Ruaview Stud of Ohakune**

Kerry & Linda Nankervis – **The Lynmar Stud from Taranaki**

Tony & Glennis Thompson – **The Glen Anthony Stud of Waipukurau**

Breed judging started on the morning of Thursday 23rd October with Peter McWilliam officiating as the Breed Judge for this year's Royal Show. There were three performance classes this year with each breed, including cow and calf class, a yearling heifer class and a yearling bull class in these classes. EBVs were taken into consideration but not by the judge. EBVs were used to arrive at an indexed performance rating. These performance ratings were announced by the steward after the judge had lined the cattle up for his placings. On the basis of these performance ratings the steward could change the judges placings if necessary.

The large Glen Anthony team dominated this year's Royal Show.



SENIOR FEMALE SECTION

Senior Champion

Glen Anthony Leila (2 year old heifer)

Reserve Champion

Glen Anthony Farina (7 year old)

Senior Production Section

1st Glen Anthony Leila

2nd Glen Anthony Farina

JUNIOR FEMALE SECTION

Junior Champion

Glen Anthony Miss Kelly

Reserve Champion

Glen Anthony Mirage

JUNIOR FEMALE PERFORMANCE CLASS

1st Glen Anthony Mirage

2nd Lymar Molly

3rd Glen Anthony Madonna

It was great to see an entry of 10 heifers in this Junior class.

SENIOR BULL SECTION

Champion Bull

Glen Anthony Kauri

No other entries

JUNIOR BULL SECTION

Four Glen Anthony entries only

Junior Champion Bull

Glen Anthony AM36

Supreme Breed Champion

Glen Anthony Kauri

INTERBREED CLASSES

Thursday afternoon saw the judging of the Royal Society Interbreed Classes leading up to the Meat & Wool Cup all judged by the full panel of Breed Judges.

Senior Bull

1st — Glen Anthony Kauri

Senior Cow & Calf

1st — Angus

2nd — Glen Anthony Leila

Interbreed Pairs

1st — Angus

2nd — Glen Anthony Kauri & Glen Anthony Leila

Meat & Wool Cup

1st — Glen Anthony Kauri

2nd — Glen Anthony Leila

A fantastic, unique achievement for the one stud to be first and second in a Royal Show Meat & Wool Cup. Also a fantastic achievement for Kauri – two Royal Show Meat & Wool Cups back to back. Third year in a row that he has won the Gisborne – Hastings Meat & Wool Cup double.

ALL BREED CLASSES

Friday 24th October – All Breed Classes judged by Bruce McKenzie of Masterton and his Associate Judge, Rebecca McConochie from Nelson.

All Breed Senior Bull

Glen Anthony Kauri beaten into 2nd place by a Romagnola Bull.

All Breed Production Cow & Calf

In this class, a production formula based on the calf's daily weight gain, an EBV based performance index and the judge's normal criteria were all taken into consideration.

While three Simmental cows topped the EBV performance section, the 2 year old Angus cow of Alan Hayward's came through to win from Glen Anthony Leila 2nd and Glen Anthony Letice 3rd.

All Breed Yearling Bull

1st — Glen Anthony AM36

All Breed Grand Champion Pairs

1st — Glen Anthony with Miss Kelly and AM36

2nd — John & Helen Hammond with a pair of Ruaview heifers

Junior Beef Herdsperson

Daniel Clayton a new Simmental Breeder from Waipukurau won the Junior Section of this event – congratulations!

Our thanks must go to Peter McWilliam for giving his time to judge at the Royal Show. Congratulation to those few breeders who went to the trouble to exhibit or attend the show and witness this tremendous achievement by the Simmental breed, the best to date at a Royal NZ Show.



AM103 (Polled)

Sire Puketawa Horahora

Birth Wt	200 MILK	200D Wt	400D Wt	600 Wt	S.S.	RUMP FAT	RIB FAT	EMA
+2.3	+11	+26	+55	+55	+0.4	-0.7	-0.4	+0.2
76%	48%	70%	70%	67%	50%	40%	40%	35%



AM104 (Polled)

Sire Puketawa Kingsford

Birth Wt	200 MILK	200D Wt	400D Wt	600 Wt	S.S.	RUMP FAT	RIB FAT	EMA
+1.7	+10	+23	+48	+50	+0.1	-0.6	-0.3	+1.2
76%	39%	71%	70%	70%	68%	50%	50%	44%



AM112 (Polled)

Sire Puketawa Grand

Birth Wt	200 MILK	200D Wt	400D Wt	600 Wt	S.S.	RUMP FAT	RIB FAT	EMA
+1.8	+9	+23	+36	+35	-0.5	0.0	+0.1	+1.3
77%	49%	71%	71%	67%	49%	42%	42%	38%



AM128 (Polled)

Sire Puketawa Kingsford

Birth Wt	200 MILK	200D Wt	400D Wt	600 Wt	S.S.	RUMP FAT	RIB FAT	EMA
+2.4	+10	+25	+45	+48	+0.4	-0.6	-0.3	+1.1
75%	39%	69%	69%	68%	47%	38%	38%	34%



AM129 (Horned)

Sire Puketawa Kingsford

Birth Wt	200 MILK	200D Wt	400D Wt	600 Wt	S.S.	RUMP FAT	RIB FAT	EMA
+1.5	+11	+19	+40	+40	-0.6	-0.5	-0.2	+1.7
76%	39%	70%	70%	70%	69%	51%	51%	44%



AM134 (Polled)

Sire Puketawa Hansa

Birth Wt	200 MILK	200D Wt	400D Wt	600 Wt	S.S.	RUMP FAT	RIB FAT	EMA
+0.9	+12	+12	+23	+16	+0.9	-0.3	-0.1	-0.7
79%	49%	74%	74%	73%	71%	54%	54%	47%



AM136 (Polled)

Sire PuketawaP GII

Birth Wt	200 MILK	200D Wt	400D Wt	600 Wt	S.S.	RUMP FAT	RIB FAT	EMA
+2.0	+7	+22	+39	+46	+0.3	-0.1	+0.1	+2.9
78%	53%	73%	73%	72%	72%	55%	55%	49%



AM140 (Polled)

Sire Puketawa GII

Birth Wt	200 MILK	200D Wt	400D Wt	600 Wt	S.S.	RUMP FAT	RIB FAT	EMA
+3.1	+12	+22	+38	+48	+2.7	0.0	+0.1	+2.1
78%	55%	73%	73%	73%	72%	56%	56%	49%



AM143 (Horned)

Sire Puketawa Grand

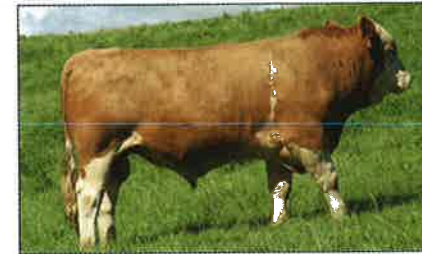
Birth Wt	200 MILK	200D Wt	400D Wt	600 Wt	S.S.	RUMP FAT	RIB FAT	EMA
+3.6	+8	+23	+46	+48	-0.8	-0.7	-0.4	+1.9
77%	48%	71%	71%	71%	50%	53%	53%	47%



AM147 (Polled)

Sire Puketawa GII

Birth Wt	200 MILK	200D Wt	400D Wt	600 Wt	S.S.	RUMP FAT	RIB FAT	EMA
+4.7	+8	+27	+49	+60	+1.4	-0.2	0.0	+2.9
77%	52%	72%	73%	72%	72%	56%	56%	49%



AM151 (Polled)

Sire Puketawa Kingsford

Birth Wt	200 MILK	200D Wt	400D Wt	600 Wt	S.S.	RUMP FAT	RIB FAT	EMA
+1.9	+11	+19	+26	+35	+0.2	+0.1	+0.2	+1.4
77%	45%	71%	69%	68%	64%	49%	49%	43%



AM153 (Polled/Scurs)

Sire Puketawa Kingsford

Birth Wt	200 MILK	200D Wt	400D Wt	600 Wt	S.S.	RUMP FAT	RIB FAT	EMA
+5.8	+10	+32	+45	+58	+0.9	-0.2	0.0	+1.6
76%	40%	71%	71%	71%	70%	52%	52%	45%



AM154 (Horned)

Sire Puketawa Choco

Birth Wt	200 MILK	200D Wt	400D Wt	600 Wt	S.S.	RUMP FAT	RIB FAT	EMA
+4.3	+9	+29	+43	+52	-1.0	+0.1	+0.2	+2.5
76%	57%	72%	73%	72%	72%	56%	56%	49%



AM159 (Horned)

Sire Puketawa Grand

Birth Wt	200 MILK	200D Wt	400D Wt	600 Wt	S.S.	RUMP FAT	RIB FAT	EMA
+7.2	+8	+37	+64	+76	+0.7	-1.7	-1.1	+1.1
77%	49%	71%	71%	71%	70%	53%	53%	46%



AM163 (Polled)

Sire Puketawa Kingsford

Birth Wt	200 MILK	200D Wt	400D Wt	600 Wt	S.S.	RUMP FAT	RIB FAT	EMA
+6.3	+12	+36	+54	+67	+0.9	-0.3	-0.1	+1.4
77%	42%	71%	71%	70%	70%	53%	53%	46%

PUKETAWA SIMMENTALS

Bull Sale

**Monday, June 14th, 2004
on property at 1.00pm.**

Lunch available prior to sale.

**“Top performance bulls from
a top performance herd”**

— MARBLING FIGURES AVAILABLE —

**For catalogues and
information contact:**

John Scott
Puketawa Simmentals
Roberts Road, Hora Hora
R.D. 2, Cambridge
Tel (07) 827 2864, Fax (07) 827 2977

or Wrightson
Bruce Orr, Tel: 07 573 5599
or 029 958 2611
Dean Evans, Tel: 07 824 1192
or Waikato Farmers
Rod Harper, Tel: 07 856 0022
or your local agent.

- 35 big, strong, sound, performance bulls bred and reared in the hills at 300 - 400 metres above sea level.
- 180 cow herd – allows for strong selection pressure.
- Growth, milk and carcass EBVs.
- Trait leader sires.
- Top yearling sires.
- A number of bulls available are in the top 1% of the breed for the growth EBVs.
- Bulls are also available in the low birth weight category (i.e. negative birthweight EBV values).
- Commercial and stud bulls.
- Polled and horned bulls.
- Hundreds of breeding bulls sold since establishment of stud in 1972.
- All bulls guaranteed.
- Available for inspection prior to sale or at any other suitable time.



AM173 (Polled)

Sire Puketawa Horahora

Birth	200	200D	400D	600	S.S.	RUMP	RIB	EMA
Wt	MILK	Wt	Wt	Wt		FAT	FAT	
+2.2	+6	+25	+43	+49	-0.6	-0.6	-0.3	+0.7
77%	48%	72%	72%	71%	69%	52%	52%	46%



AM185 (Horned)

Sire Puketawa Horahora

Birth	200	200D	400D	600	S.S.	RUMP	RIB	EMA
Wt	MILK	Wt	Wt	Wt		FAT	FAT	
+4.1	+4	+31	+59	+67	+0.2	-0.8	-0.5	+1.3
76%	46%	71%	71%	70%	70%	52%	52%	45%



AM186 (Polled)

Sire Puketawa Gti

Birth	200	200D	400D	600	S.S.	RUMP	RIB	EMA
Wt	MILK	Wt	Wt	Wt		FAT	FAT	
+4.3	+15	+27	+41	+48	+1.5	+0.1	+0.2	+1.9
76%	53%	69%	70%	67%	66%	53%	53%	47%

There's more to **GENETIC GAIN** than just choosing the bull



How to maximise sale price, increase genetic gain and make more profit

Livestock Improvement's GeneMark DNA testing service has been available to New Zealand dairy farmers since 1999. The same testing service has been available to international farmers and organisations since 2002.

Since GeneMark is part of Livestock Improvement, GeneMark products can be integrated with a comprehensive range of interrelated herd improvement products developed specifically for dairy farmers. No other DNA analysis company can offer this seamless integration.

GeneMark can increase the profitability of both New Zealand and International farmers through three types of DNA testing:

1. Identification/Verification of the parentage – **Tru-Parent**
2. Identification of specific **Production Genes**
3. Detection of **Lethal Genes** such as BLAD, CVM and Citrullinaemia

Beef breeders best option when using DNA testing is to search and verify for parents, using Tru-Parent (parentage verification).



Why farmers use GeneMark DNA Tru-Parent testing

To monitor and improve management practices

Mis-mothering, mis-identification and incorrect recording procedures are estimated to produce a New Zealand national error rate of about 15% in the dairy population. Tru-Parent DNA testing is an excellent way of monitoring management practices such as calf tagging systems. More than that – it's an ideal way of eliminating the human error and practical difficulty of matching calf to dam in the field. Clients can Tru-Parent test any number of animals, from a few to the whole herd.

To look to future needs

If a farmer has a cow or bull they are breeding replacements from, or a bull that they hope/expect will become a sire of daughters in other herds, a DNA profile could be invaluable for identifying possible progeny later.

For the same reason, it's useful to have a record of the DNA profile for all natural mating sires that are used as "Run with Bull" sires with heifers and cows – particularly useful if the bulls are going off-farm or to slaughter at the end of the mating period (where there won't be another chance to get a sample for testing such bulls). Once the bull is DNA profiled, offspring can be identified and be recorded as being official, even when more than one bull was pastured with the cows.

To spot-check parentage of sale animals

Buyer beware. Many purchasers are now writing a clause into the purchase agreement to the effect that a certain percentage of animals will be Tru-Parent tested to confirm their parentage is as recorded. Testing a random selection of animals gives buyers the confidence that they are getting what they are paying for. Vendors who are confident of the accuracy of

their recording will sometimes offer this clause as confirmation of the true value of their sale stock. This becomes of increased importance when higher prices are being paid, based on the quality of the parentage records.

To maximise sale price

It is well documented that animals with an identified sire fetch a better price than those with an unidentified sire. Using GeneMark Tru-Parent DNA testing, clients can turn an animal with an unrecorded sire into an animal with a recorded sire. Therefore sale prices are maximised because of the extra information now available for buyers.

Clients can also use Tru-Parent to identify the parentage of an animal that has lost its eartag, or to identify animals from missing mating records.

To make better breeding, culling and selling decisions

When the true parentage of an animal has been identified, then the best management decisions can be made. Culling or selling an animal which has no or mis-recorded parentage may result in the wrong animals leaving the herd, and the farmer maybe missing the chance to breed from a great cow. The result is poor profit returns for the farmer.



Tru-Parent test options

DNA parent verification is the most accurate method available, achieving matching accuracy of 98 %+. Traditional recording procedures have accuracy levels of about 85% in the dairy population, so the gains in accuracy and genetic gain by using Tru-Parent are substantial.

Every animal sample that is submitted for Tru-Parent testing is DNA profiled – *the DNA Profile* is fundamental to Tru-Parent testing. Clients have three options for establishing the parentage of each animal.

1. **MINDA Herd Search** – Used for clients who have their records recorded on the MINDA database. Searches against the recorded sire/dam. If that fails, then it searches against sires used in the herd in the appropriate season.
2. **Selected Sires/Dams** – *Recommended for beef clients.* The client can choose up to five sires/dams to test against.
3. **Bull Team Search** – Used mainly for dairy clients. Searches against a team and a year the client specifies: PREMIER SIRES Jersey, PREMIER SIRES Holstein-Friesian, KiwiCross, Ayrshire proven, Ayrshire unproven).

If the Sire/Dam profile is not in our DNA library and if the client wishes to have the sire/dam DNA profiled, they need to provide a sample for testing. The Tru-Parent testing price is \$30 - \$40 + G.S.T depending on numbers.

For more information on any of the above tests or how to request a GeneMark test, phone 0800 436 362 (0800 GeneMark), or e-mail genemark@lic.co.nz.



There's more to genetic gain than just choosing the bull

When making your breeding decisions, you want to be sure of the parentage of the animals you're breeding from.

Tru-Parent can:

- Verify "known" parents – so you can be sure your data is accurate and credible
- Establish unknown parents – so you know your records are correct and exact

Tru-Parent gives you confidence that you have the right information to make the right decisions.

For further details contact GeneMark on 0800 GENEMARK (0800 436 362) or email genemark@lic.co.nz



GeneMark®

GeneMark – creating extra value for you through DNA testing

PAYMASTER

has had the most profound influence on our programme. Grandsons sell at Beef Expo and Waikato this year

Hampton Downs Simmental

Hampton Downs is not just a prefix, it is a programme.

- ★ We got luckier than we could ever have dreamed of when we discovered Paymaster
- ★ What we did know was that he was the king of growth curve bending. His calving ease and performance combination have made him one of the top fullblood sires of all time, a benchmark of the Simmental world. A trait leader in North America for maternal traits made him the ultimate polled fullblood sire.
- ★ What we didn't know was that he would give us carcass traits that are second to none. His EMA, and rib and rump fat ebv's place him in the top 5% and his IMF ebv well within the top 1% of the breed in Australasia. And he is passing that onto his sons and daughters.
- ★ At Hampton Downs we believe that Paymaster encapsulates everything that the Simmental breed offers our beef industry.
- ★ Paymaster defines our own programme, positive calving ease, positive maternal calving ease, polled, maternal strength and milk, good growth and top carcass. He is balanced in every way, avoiding extremes. Little wonder that he is admitted to the exclusive Balanced Genetic Trait Leader list of the North American Simmental Association.
- ★ Our patience and dedication has allowed us to produce what we believe the beef industry needs, Simmental that will perform in all environments. We foresee a future for our breed in the commercial herds of New Zealand through Paymaster's genes, the very best quality cattle for our time. Our motivation to produce quality seedstock has never been greater.

Enquiries and inspections are always welcome at any time and can be arranged

Contact us on Phone / Fax: (07) 826 3194 - or

email: malcolm@hampton-downs-simmental.com.

Visit our website . . . www.hampton-downs-simmental.com

**PROPRIETORS: Malcolm and Ngaire Entwisle,
Hampton Downs Road, R. D. 2, Te Kauwhata.**

THE BALANCED BREED

SIMMENTAL NZ

40 Lots for sale at Beef Expo 2004 • All Beef Class Structurally Assessed

Check them out at
www.simmental.co.nz
 under Internet Solutions



1 WAIWHARE MAJOR AM211

VENDOR: J M GOULD (BRANCOTT FARM) TRUST, HASTINGS

TATTOO:
M211

HERD:
1477

DOB:
09/09/02



RISSINGTON BARNABY AB639
 Sire: POURIWAI EMPEROR AE21
 POURIWAI 1276/AY948

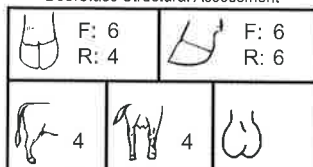
GLEN ANTHONY DEBONAIR AD19 (ET)
 Dam: WAIWHARE AH51 (QA)
 WAIWHARE AD238/94 (ET)

BW	200	400	600	MCW	Milk	MV	SS	Cwt
+2.8	+27	+41	+46	+42	+9			+31
76%	71%	71%	68%	57%	51%			60%

EMA	Rib	Rump	RBV%	IMF%	CE-d	CE-m	GL	DC
+1.8	-0.6	-1.0	+1.2	+0.1			-0.8	
42%	50%	50%	47%	31%			51%	

A sire with a great outlook. A good one, with a top set of EBV's. Semen and service tested.

BeefClass Structural Assessment



MARKETING CONSULTANT
 Kevin Ryan, Wrightson

2 WAIWHARE MARCUS AM196

VENDOR: J M GOULD (BRANCOTT FARM) TRUST, HASTINGS

TATTOO:
M196

HERD:
1477

DOB:
13/08/02



RISSINGTON BARNABY AB639
 Sire: POURIWAI EMPEROR AE21
 POURIWAI 1276/AY948

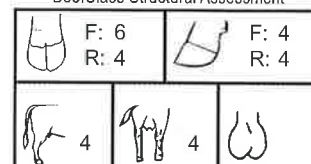
POURIWAI AA3
 Dam: WAIWHARE AE263
 WAIWHARE AB95

BW	200	400	600	MCW	Milk	MV	SS	Cwt
+3.2	+32	+43	+49	+48	+11			+27
77%	72%	72%	71%	60%	53%			62%

EMA	Rib	Rump	RBV%	IMF%	CE-d	CE-m	GL	DC
+0.3	-0.4	-0.7	+0.4	+0.3	+1.6		-1.8	
49%	56%	56%	52%	37%	35%		52%	

A sire standing on great bone and showing excellent length. His full brother was the 2002 Supreme Champion. Strong EBV's again. Semen and service tested.

BeefClass Structural Assessment



MARKETING CONSULTANT
 Kevin Ryan, Wrightson

3 CORNWALL PARK MR KEMP AM8

VENDOR: CORNWALL PARK SIMMENTALS, AUCKLAND

TATTOO:
M8

HERD:
1620

DOB:
16/07/02



POURIWAI EMPEROR AE21
Sire: **POURIWAI AJ792**
POURIWAI ZENA AZ06

POURIWAI ADMIRAL AA9
Dam: **POURIWAI AD606**
POURIWAI 1276/BX810

BW	200	400	600	MCW	Milk	MV	SS	Cwt
+2.1	+24	+34	+39	+33	+12		+0.8	+28
76%	71%	71%	68%	55%	47%		72%	60%

EMA	Rib	Rump	RBY%	IMF%	CE-d	CE-m	GL	DC
+3.0	+0.2	+0.1	+1.3	0.0				
48%	54%	54%	51%	35%				

Used in service. A well structured sire with presence.

BeefClass Structural Assessment

	F: 6 R: 6		F: 4 R: 4
	6		4

MARKETING CONSULTANT
Bruce Orr, Wrightson

4 WAI-ITI MR UNIVERSE AM67

VENDOR: P C & S M MCWILLIAM, GLADSTONE MASTERTON

TATTOO:
M67

HERD:
1261

DOB:
22/08/02



BBS ZIMA D55 AD55 (IMP USA)
Sire: **WAI-ITI KARACHI AK134 (QA) (ET)**
WAI-ITI MISS POLO 3 AB97

GLEN ANTHONY SGT. PEPPER AC27
Dam: **WAI-ITI NOLA G46**
ROTOMARA XTATIC 123/AX47

BW	200	400	600	MCW	Milk	MV	SS	Cwt
+3.5	+25	+38	+41	+40	+6			+24
71%	68%	68%	68%	54%	43%			57%

EMA	Rib	Rump	RBY%	IMF%	CE-d	CE-m	GL	DC
+1.3	-0.1	-0.4	+0.9					
42%	49%	49%	46%					

Polled Mr Universe is a half brother to Wai-iti His Lordship the 2003 Expo Champion who sold to Andrew and Tracy Neal for \$12000

BeefClass Structural Assessment

	F: 4 R: 4		F: 6 R: 6
	4		4

MARKETING CONSULTANT
Mark Stevens, Wrightson

5 WAI-ITI MACHO MAN E.T. AM20 (ET)

VENDOR: P C & S M MCWILLIAM, GLADSTONE MASTERTON

TATTOO:
M20

HERD:
1261

DOB:
03/08/02



RICHWOOD TOPHAND 809C
Sire: **RICHWOOD BRUNO**
MARYWOOD BURNADETTE

WAI-ITI LOCH NESS AZ4E (ET)
Dam: **WAI-ITI BILLOW 20 AD101**
WAI-ITI BILLOW 10 AZ41

BW	200	400	600	MCW	Milk	MV	SS	Cwt
+3.3	+22	+29	+31		+9			
71%	65%	60%	60%		36%			

EMA	Rib	Rump	RBY%	IMF%	CE-d	CE-m	GL	DC
+0.9	+0.2	+0.1	+0.5				+1.0	
30%	37%	37%	35%				50%	

Bilow D101 was our top donor cow who has already produced 3 stud sires.

BeefClass Structural Assessment

	F: 6 R: 6		F: 4 R: 4
	4		4

MARKETING CONSULTANT
Nathan Couper, William & Kettles

6 KAREWA MAESTRO AM7 (ET)

VENDOR: J & L / D & L MCNAUGHTEN, DANNEVIRKE

TATTOO:
M7

HERD:
1249

DOB:
04/09/02



TOKAWEKA YEARLY 79/AY11
Sire: **PUKEPUKE BRENT AB16**
PUKEPUKE WIN 1398/AW6

SCOTTISH STRIKER 4693895
Dam: **KAREWA ZAWI AZ153**
KAREWA VANITY 1249/AX103

BW	200	400	600	MCW	Milk	MV	SS	Cwt
+2.6	+24	+45	+47	+46	+12			+32
76%	72%	72%	68%	59%	59%			62%

EMA	Rib	Rump	RBY%	IMF%	CE-d	CE-m	GL	DC
+1.2	-0.2	-0.5	+0.8		-1.6	+0.7	-0.5	
37%	44%	44%	41%		35%	35%	55%	

A polled bull with a proven pedigree and the combination of the two best bloodlines used in the Karewa Stud for soundness growth EMA & cosmetics BYD clear herd used in service. Semen and service tested.

BeefClass Structural Assessment

	F: 6 R: 4		F: 6 R: 4
	4		4

MARKETING CONSULTANT
Bruce Orr, Wrightson

7 HAMPTON DOWNS MACKINTOSH AM61

VENDOR: MALCOLM & NGAIRE ENTWISLE, TE KAUWHATA

TATTOO:
M61

HERD:
1496

DOB:
29/07/02



RICHWOOD TOPHAND 809C
Sire: **RICHWOOD BRUNO**
MARYWOOD BURNADETTE

BAR 5 PAYMASTER 1334D
Dam: **HAMPTON DOWNS KOOKIES & KREME AK4**
HAMPTON DOWNS FUSSEN

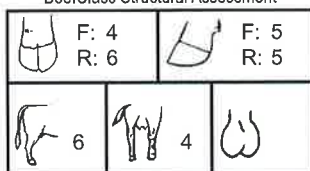
BW	200	400	600	MCW	Milk	MV	SS	Cwt
+0.9	+20	+30	+23					
75%	67%	60%	61%					

EMA	Rib	Rump	RBV%	IMF%	CE-d	CE-m	GL	DC
+1.2	-0.2	-0.5	+0.8	-0.2			-0.9	
30%	41%	41%	38%	34%			61%	

MacKintosh, born of a 2 year heifer, is possibly the strongest maternal package that we have ever put together with Bruno, Paymaster and Eldorado in his blood.

MARKETING CONSULTANT
Bruce Orr, Wrightson

BeefClass Structural Assessment



8 MONEYMORE MIDDLE-EARTH AM10

VENDOR: ENTERPRISE CATTLE, WAKEFIELD NELSON

TATTOO:
M10

HERD:
1308

DOB:
04/08/02



GLENSIDE X-ECUTIVE 1312/AX5
Sire: **ROCKVALE APOLLO AA108**
AINTREE 77/AP5

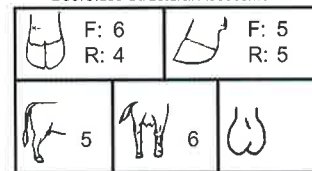
WAI-ITI LOCH LOMOND AB43
Dam: **MONEYMORE URSULA AH88 (QA)**
MONEYMORE URSULA AC33

BW	200	400	600	MCW	Milk	MV	SS	Cwt
+2.4	+20	+36	+35	+34	+13		+0.8	+24
76%	71%	71%	67%	56%	55%		52%	60%

EMA	Rib	Rump	RBV%	IMF%	CE-d	CE-m	GL	DC
+1.6	+0.3	+0.3	+0.6				-0.2	
49%	56%	56%	52%				52%	

Actual birth weight 40 kg. Not used in service. Usual full vendor guarantee.

BeefClass Structural Assessment



MARKETING CONSULTANT
Geoff Wright, Wrightson

9 LADBURN MAGELLAN AM315

VENDOR: MR A A T PARTRIDGE, LEESTON

TATTOO:
M315

HERD:
1168

DOB:
27/07/02



MONEYMORE CARDSHARK AD8
Sire: **LADBURN KRUSADER AK133**
LADBURN CHIFFONETTE AC29

KAREWA ENTERPRISE AE14
Dam: **KAREWA GRAND LADY AG376**
KAREWA ELEGANT LADY AE323

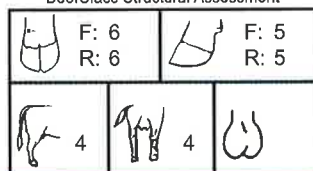
BW	200	400	600	MCW	Milk	MV	SS	Cwt
+5.1	+32	+58	+60	+57	+11			+37
59%	62%	60%	63%	52%	39%			53%

EMA	Rib	Rump	RBV%	IMF%	CE-d	CE-m	GL	DC
+1.6	+0.1	0.0	+0.7	-0.1				
42%	49%	49%	45%	34%				

A top son of Ladburn Krusader who was sold at Beef Expo 2002. Has been used in service.

MARKETING CONSULTANT
Roger Keach, Pyne Gould Guinness

BeefClass Structural Assessment



10 LEAFLAND MADIBA AM4 (ET)

VENDOR: STRAUSS FAMILY, MOSGIEL

TATTOO:
M4

HERD:
1614

DOB:
23/08/02



TOKAWEKA YEARLY 79/AY11
Sire: **PUKEPUKE BRENT AB16**
PUKEPUKE WIN 1398/AW6

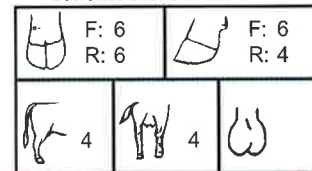
BAR NONE SHAREHOLDERS AW174623
Dam: **KAREWA EBONY AE339**
KAREWA BROOKE AB227

BW	200	400	600	MCW	Milk	MV	SS	Cwt
+3.2	+17	+29	+30	+28	+7			+18
74%	66%	64%	63%	54%	56%			55%

EMA	Rib	Rump	RBV%	IMF%	CE-d	CE-m	GL	DC
+0.7	+0.1	0.0	+0.4		-1.4		+1.6	
36%	41%	41%	39%		35%		52%	

Depth, very correct, well muscled - scanned 119cm at 17 months. Brother of 2002 top price Reserve Champion. Has ideal temperament. Semen tested. Vendor reserves right to use collected Semen.

BeefClass Structural Assessment



MARKETING CONSULTANT
Simon Cox, Wrightson

11

TAPUATA MAIN AM72

VENDOR: G. & D. PRENTER,, DANNEVIRKE

TATTOO:
M72HERD:
1456DOB:
28/08/02

LS LOPEZ 88/AL120E (ET)
Sire: TOKAWEKA DRAMATIC AD408 (ET)
TOKAWEKA XEBEC 79/AX825

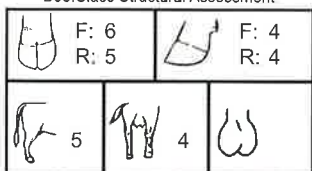
RISSINGTON ADMIRAL AA347
Dam: TAPUATA KAURI AK60
TAPUATA SANDY BARWICK AB42

BW	200	400	600	MCW	Milk	MV	SS	Cwt
+2.7	+26	+45	+45	+40	+14		+0.2	+32
64%	66%	63%	62%	54%	53%		54%	55%

EMA	Rib	Rump	RBV%	IMF%	CE-d	CE-m	GL	DC
+1.8	-0.2	-0.5	+1.0		-0.2		-0.8	-2.0
43%	50%	50%	48%		37%		54%	35%

Sand, honey coloured, strongly muscled bull. 2 year heifer calf with 2 leading cows of the breed close up - Reebee and Sandy Borwick.

BeefClass Structural Assessment



MARKETING CONSULTANT
Bruce Orr, Wrightson

12

FALCON HILL AM8

VENDOR: MR PETER GARLAND, GISBORNE

TATTOO:
M8HERD:
1662DOB:
07/09/02

POURIWAI AF266
Sire: POURIWAI HERO AH655
POURIWAI ZENA AZ06

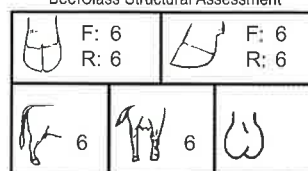
POURIWAI YACKER AY2
Dam: POURIWAI AB299
RISSINGTON 49/BU417

BW	200	400	600	MCW	Milk	MV	SS	Cwt
+1.4	+17	+27	+38	+43	+7		+2.4	+20
65%	64%	69%	68%	57%	45%		67%	60%

EMA	Rib	Rump	RBV%	IMF%	CE-d	CE-m	GL	DC
+0.9	0.0	-0.2	+0.4	+0.2				
44%	51%	51%	48%	32%				

A docile good natured bull with balanced EBV's. Second in Interbreed Yearling Bull Class at Gisborne Show. Carries coat colour dilution gene. Large scrotal measurement.

BeefClass Structural Assessment



MARKETING CONSULTANT
Neville Clark, Wrightson

13

WAIHARE MONARCH AM174

VENDOR: J M GOULD (BRANCOTT FARM) TRUST, HASTINGS

TATTOO:
M174HERD:
1477DOB:
04/07/02

LS LOPEZ 88/AL120E (ET)
Sire: TOKAWEKA DRAMATIC AD408 (ET)
TOKAWEKA XEBEC 79/AX825

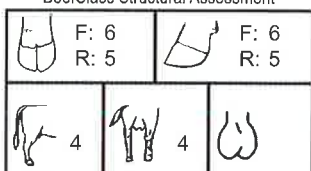
POURIWAI EMPEROR AE21
Dam: POURIWAI AJ971
POURIWAI AE827

BW	200	400	600	MCW	Milk	MV	SS	Cwt
-1.1	+16	+40	+32	+28	+15		+0.3	+31
76%	71%	71%	70%	59%	51%		52%	61%

EMA	Rib	Rump	RBV%	IMF%	CE-d	CE-m	GL	DC
+1.5	-0.3	-0.6	+0.9	+0.2	+5.1		-1.7	
49%	56%	56%	53%	39%	38%		55%	

This is a sire of superb quality, standing on excellent feet and with a great back end. Semen tested and service tested.

BeefClass Structural Assessment



MARKETING CONSULTANT
Kevin Ryan, Wrightson

14

WAI-ITI MEXICO AM31

VENDOR: P C & S M MCWILLIAM, GLADSTONE MASTERTON

TATTOO:
M31HERD:
1261DOB:
12/08/02

BBS ZIMA D55 AD55 (IMP USA)
Sire: WAI-ITI KARACHI AK134 (QA) (ET)
WAI-ITI MISS POLO 3 AB97

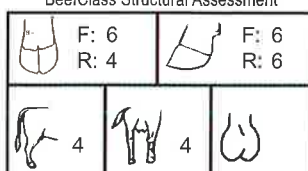
WAI-ITI BLUE BEARD AB12
Dam: WAI-ITI MISS JULIE F89
WAI-ITI MISS JULIE 2 AA55

BW	200	400	600	MCW	Milk	MV	SS	Cwt
+2.8	+25	+36	+36		+6			
70%	64%	59%	58%		43%			

EMA	Rib	Rump	RBV%	IMF%	CE-d	CE-m	GL	DC
+0.5	+0.3	+0.3	+0.1					
28%	33%	33%	33%					

Miss Julie is our best Blue Beard daughter and dam of Wai-iti La Bamba, sold 2003 to John Mcfadzean for \$7000

BeefClass Structural Assessment



MARKETING CONSULTANT
Ray Moss Livestock

15

WAIWHARE MARIUS AM202

VENDOR: J M GOULD (BRANCOTT FARM) TRUST, HASTINGS

TATTOO:
M202HERD:
1477DOB:
19/08/02

RISSINGTON BARNABY AB639
Sire: **POURIWAI EMPEROR AE21**
POURIWAI 1276/AY948

WAIWHARE F0004
Dam: **WAIWHARE AH22 (QA)**
WAIWHARE AD196/94

BW	200	400	600	MCW	Milk	MV	SS	Cwt
+1.3	+21	+37	+40	+37	+10			+27
76%	71%	72%	70%	59%	49%			61%

EMA	Rib	Rump	RBV%	IMF%	CE-d	CE-m	GL	DC
+1.6	-0.4	-0.7	+1.0	+0.1			-1.6	
47%	54%	54%	50%	36%			51%	

A very correct young sire with an excellent spring of rib. Looks a real breeder. Semen and service tested.

BeefClass Structural Assessment

	F: 4 R: 5		F: 6 R: 6
	4		4

MARKETING CONSULTANT
Kevin Ryan, Wrightson

16

CORNWALL PARK MARKOS AM15

VENDOR: CORNWALL PARK SIMMENTALS, AUCKLAND

TATTOO:
M15HERD:
1620DOB:
26/07/02

CORNWALL PARK GERONIMO AG107 (ET)
Sire: **CORNWALL PARK JORDAN AJ26 (QA)**
GLEN ANTHONY DULCIE AD58

RISSINGTON ADMIRAL AA347
Dam: **CORNWALL PARK ELITE II AJ175 (QA) (ET)**
TOKAWEKA ELITE

BW	200	400	600	MCW	Milk	MV	SS	Cwt
+4.6	+28	+52	+60		+10		+1.7	+37
72%	65%	63%	62%		37%		58%	51%

EMA	Rib	Rump	RBV%	IMF%	CE-d	CE-m	GL	DC
+2.5	-0.2	-0.4	+1.3	0.0				
37%	44%	44%	41%	29%				

BeefClass Structural Assessment

	F: 6 R: 4		F: 4 R: 4
	4		4

MARKETING CONSULTANT
Nathan Couper, William & Kettles

17

LYNMAR MAGIC AM207

VENDOR: KJ & LM NANKERVIS, NEW PLYMOUTH

TATTOO:
M207HERD:
1364DOB:
30/06/02

SINGING HILLS DAMIEN AD7
Sire: **SINGING HILLS HOWARD AH29 (QA)**
SINGING HILLS CHERRY AC24

ROCKVALE APOLLO AA108
Dam: **ROCKVALE JOY AJ927**
ROCKVALE AF632

BW	200	400	600	MCW	Milk	MV	SS	Cwt
+1.5	+22	+34	+39	+38	+12		+0.9	+24
73%	67%	65%	65%	54%	45%		62%	54%

EMA	Rib	Rump	RBV%	IMF%	CE-d	CE-m	GL	DC
+0.7	-0.5	-0.8	+0.8	-0.1				
42%	50%	50%	46%	31%				

Magic's mother continually produces progeny with low birth weights and good growth EBV's with Challenger, Rascallion and Dunmore Cossack bloodlines Magic has great potential.

BeefClass Structural Assessment

	F: 6 R: 6		F: 4 R: 4
	6		3

MARKETING CONSULTANT
Nathan Couper, William & Kettles

18

CORNWALL PARK MR G AM12

VENDOR: CORNWALL PARK SIMMENTALS, AUCKLAND

TATTOO:
M12HERD:
1620DOB:
20/07/02

RISSINGTON ADMIRAL AA347
Sire: **RISSINGTON GENERAL AG476**
RISSINGTON AE12

POURIWAI AE31
Dam: **POURIWAI AG365**
POURIWAI AD540

BW	200	400	600	MCW	Milk	MV	SS	Cwt
+2.2	+25	+42	+37	+27	+8		+0.2	+27
77%	72%	71%	70%	58%	49%		66%	60%

EMA	Rib	Rump	RBV%	IMF%	CE-d	CE-m	GL	DC
+2.2	+0.3	+0.2	+0.8	+0.1			-1.5	
46%	53%	53%	49%	33%			56%	

BeefClass Structural Assessment

	F: 3 R: 3		F: 4 R: 4
	4		7

MARKETING CONSULTANT
Nathan Couper, William & Kettles

19 RUAVIEW AUDI AM11

VENDOR: J.D. & H.D. HAMMOND, OHAKUNE

TATTOO:
M11

HERD:
1558

DOB:
08/08/02



KYKSO KALGER
Sire: **BAR 5 IBBAROO 405J AJ405 (IMP CAN)**
NIEMANDIA IBBAROO

MUNGA PARK FREDERIC MPS PA0018
Dam: **RUAVIEW M.F. ANNE AC6**
WAI-ITI AMBER 5 AZ17

BW	200	400	600	MCW	Milk	MV	SS	Cwt
+1.7	+12	+11	+1		+4		-0.9	
75%	65%	62%	60%		37%		48%	

EMA	Rib	Rump	RBY%	IMF%	CE-d	CE-m	GL	DC
+0.8	+0.3	+0.3	+0.3	-0.3	+0.2		-1.9	
32%	39%	39%	36%	27%	35%		60%	

From a very sound maternal family.
Not used in service.

BeefClass Structural Assessment

	F: 6 R: 6		F: 4 R: 4
			40.5cm 20/01/04

MARKETING CONSULTANT
Mark Stevens, Wrightson

20 TERRILYNNE MAC

VENDOR: MRS H L SLOANE, WHANGAREI

TATTOO:
M137

HERD:
0897

DOB:
15/08/02



PUKETAWA AB133
Sire: **PUKETAWA ECHO AE125**
PUKETAWA AZ7

TERRILYNNE AB21
Dam: **TERRILYNNE AE503**
TERRILYNNE TERRILYNNE AU203

BW	200	400	600	MCW	Milk	MV	SS	Cwt
+2.6	+14	+25	+31	+35	+6			+17
75%	70%	68%	65%	53%	53%			56%

EMA	Rib	Rump	RBY%	IMF%	CE-d	CE-m	GL	DC
+0.6	+0.1	-0.1	+0.2	+0.3	+0.3			
38%	43%	43%	40%	20%	37%			

Moderately framed young bull with
good fleshing backed by a proven
sire.

BeefClass Structural Assessment

	F: 4 R: 4		F: 6 R: 6
			46.0cm 20/01/04

MARKETING CONSULTANT
Nathan Couper, William & Kettles

21 CORNWALL PARK MADIGAN AM21

VENDOR: CORNWALL PARK SIMMENTALS, AUCKLAND

TATTOO:
M21

HERD:
1620

DOB:
04/08/02



GLEN ANTHONY SGT. PEPPER AC27
Sire: **WAI-ITI HIGH RISER (QA)**
WAI-ITI PAULA 5

TFS ARIZONA AY7 (IMP USA)
Dam: **TOKAWEKA GLORY AG715 (ET)**
KAREWA ZANIA AZ146

BW	200	400	600	MCW	Milk	MV	SS	Cwt
+5.6	+31	+38	+45	+43	+12		+0.2	+18
75%	68%	67%	64%	51%	43%		45%	55%

EMA	Rib	Rump	RBY%	IMF%	CE-d	CE-m	GL	DC
+0.1	+0.3	+0.3	0.0	+0.2				
34%	41%	41%	38%	26%				

BeefClass Structural Assessment

	F: 4 R: 4		F: 4 R: 4
			44.5cm 20/01/04

MARKETING CONSULTANT
Nathan Couper, William & Kettles

22 HIGH VALLEY AM3

VENDOR: MRS.B.A.GLOVER, MANGATANGI R.D.1. POKENO

TATTOO:
M3

HERD:
1553

DOB:
29/07/02



POLLUX
Sire: **POLIK AJ403044 (IMP AUS)**
BESSI

SINGING HILLS DAMIEN AD7
Dam: **SINGING HILLS GALE AG1**
SINGING HILLS CORAL AC45

BW	200	400	600	MCW	Milk	MV	SS	Cwt
+0.6	+10	+17	+19				-0.2	
71%	55%	49%	49%				25%	

EMA	Rib	Rump	RBY%	IMF%	CE-d	CE-m	GL	DC
	-0.1	-0.3	+0.6					
	22%	22%	21%					

First progeny of exciting new
German Polled Fleckvieh Polik who
is easy calving suitable for heifers -
balanced, easy fleshing.

BeefClass Structural Assessment

	F: 4 R: 4		F: 4 R: 4
			38.5cm 20/01/04

MARKETING CONSULTANT
Nathan Couper, William & Kettles

23 HAMPTON DOWNS MODEM AM108

VENDOR: MALCOLM & NGAIRE ENTWISLE, TE KAUWHATA

TATTOO:
M108

HERD:
1496

DOB:
15/08/02



RICHWOOD TOPHAND 809C
Sire: **RICHWOOD BRUNO**
MARYWOOD BURNADETTE

ELDORADO AC27843 (IMP AUS)
Dam: **HAMPTON DOWNS HOTWIRE AH29 (QA)**
HAMPTON DOWNS DELIGHTEN AD57

BW	200	400	600	MCW	Milk	MV	SS	Cwt
+3.9	+31	+43	+44		+13		0.0	
75%	71%	63%	63%		35%		27%	

EMA	Rib	Rump	RBY%	IMF%	CE-d	CE-m	GL	DC
+1.1	-0.4	-0.7	+1.0	-0.2			0.0	
30%	42%	42%	39%	30%			63%	

A double dose of strong maternal genetics in this dark red, clean polled growth bull via his sire, Richwood Bruno, and his trait leading Eldorado sired dam.

MARKETING CONSULTANT
Bruce Orr, Wrightson

BeefClass Structural Assessment		
F: 4 R: 5	F: 5 R: 5	
5	5	40.0cm 20/01/04

24 WAI-ITI MILKYBAR-KID AM53

VENDOR: P C & S M MCWILLIAM, GLADSTONE MASTERTON

TATTOO:
M53

HERD:
1261

DOB:
18/08/02



BBS ZIMA D55 AD55 (IMP USA)
Sire: **WAI-ITI KARACHI AK134 (QA) (ET)**
WAI-ITI MISS POLO 3 AB97

WAI-ITI FUSILIER
Dam: **WAI-ITI BUTTERFLY H101 (QA)**
WAI-ITI BUTTERFLY 13

BW	200	400	600	MCW	Milk	MV	SS	Cwt
+4.6	+31	+41	+45		+8		+0.6	
75%	68%	61%	60%		40%		33%	

EMA	Rib	Rump	RBY%	IMF%	CE-d	CE-m	GL	DC
+1.0	0.0	-0.1	+0.6	+0.1				
26%	31%	31%	31%	23%				

A powerful genetic package from a most prepotent maternal line. You can expect predictability and soundness from a most famous Butterfly family. A real stud sire prospect.

MARKETING CONSULTANT
Mark Stevens, Wrightson

BeefClass Structural Assessment		
F: 6 R: 6	F: 6 R: 6	
6	6	43.0cm 20/01/04

25 WILLOWBROOK MARLIN AM40

VENDOR: WILLOWBROOK SIMMENTALS, TIMARU

TATTOO:
M40

HERD:
1222

DOB:
07/09/02



KYKSO KALGER
Sire: **BAR 5 IBBAROO 405J AJ405 (IMP CAN)**
NIEMANDIA IBBAROO

WILLOWBROOK TEX AX14
Dam: **WILLOWBROOK FISH**
WILLOWBROOK CORAL AC49

BW	200	400	600	MCW	Milk	MV	SS	Cwt
+3.1	+21	+27	+29	+22	+6		-1.0	+13
76%	72%	69%	67%	52%	35%		62%	55%

EMA	Rib	Rump	RBY%	IMF%	CE-d	CE-m	GL	DC
+1.1	-0.8	-1.2	+1.4	-0.5			-1.9	
39%	50%	49%	45%	32%			61%	

Polled. The Top Performing Test Station Bull as at 23.03.04 in tough conditions overall daily weight gain 1.34kg per day. Actual birth weight 47kg.

MARKETING CONSULTANT
Roger Keach, Pyne Gould Guinness

BeefClass Structural Assessment		
F: 4 R: 4	F: 6 R: 6	
4	4	41.0cm 20/01/04

26 TERRILYNNE MORK AM119

VENDOR: MRS H L SLOANE, WHANGAREI

TATTOO:
M119

HERD:
0897

DOB:
30/07/02



PUKETAWA AB133
Sire: **PUKETAWA ECHO AE125**
PUKETAWA AZ7

PURIRI BRAVO AB15
Dam: **TERRILYNNE AH803**
TERRILYNNE TERRILYNNE AU203

BW	200	400	600	MCW	Milk	MV	SS	Cwt
+2.4	+19	+37	+44	+48	+8		+0.8	+26
75%	70%	68%	65%	54%	52%		38%	56%

EMA	Rib	Rump	RBY%	IMF%	CE-d	CE-m	GL	DC
+1.0	-0.1	-0.3	+0.5	+0.2	-1.0			
38%	43%	43%	40%	21%	35%			

A quiet medium framed young sire with plenty of fleshing.

MARKETING CONSULTANT
Bruce Orr, Wrightson

BeefClass Structural Assessment		
F: 6 R: 6	F: 6 R: 6	
6	6	43.0cm 20/01/04

27 MONEYMORE MOUTERE AM21

VENDOR: ENTERPRISE CATTLE, WAKEFIELD NELSON

TATTOO:
M21

HERD:
1308

DOB:
28/08/02



MONEYMORE COLOSSUS AF1E (ET)
Sire: PROSPECT COLOSSEUM AJ24 (QA)
PROSPECT AE1

WAI-ITI LOCH LOMOND AB43
Dam: MONEYMORE ALLIE AG57
MONEYMORE ALLIE 1308/AY179

BW	200	400	600	MCW	Milk	MV	SS	Cwt
+2.3	+16	+15	+19		+13		-0.2	+8
74%	68%	63%	62%		42%		45%	51%

EMA	Rib	Rump	RBV%	IMF%	CE-d	CE-m	GL	DC
+0.6	+0.5	+0.5	+0.1					
33%	38%	38%	36%					

Actual birth weight 44kg. Usual full vendor guarantee. Not used in service.

BeefClass Structural Assessment

	F: 4 R: 4		F: 4 R: 4
	6		7
	38.5cm		20/01/04

MARKETING CONSULTANT
Nathan Couper, William & Kettles

28 PROSPECT MAXIUM AM36

VENDOR: G R COCKBURN, TE ANAU

TATTOO:
M36

HERD:
1202

DOB:
14/09/02



LEVELS HANS 3/AX131E (ET)
Sire: MONEYMORE JAMES BOND AJ5 (QA)
MONEYMORE LAURA

PROSPECT AWESOME AA50
Dam: PROSPECT AG20
HELENSBROOK AC28

BW	200	400	600	MCW	Milk	MV	SS	Cwt
+2.7	+15	+20	+19		+11		-0.1	+12
76%	69%	64%	62%		43%		42%	51%

EMA	Rib	Rump	RBV%	IMF%	CE-d	CE-m	GL	DC
+1.2	+0.5	+0.6	+0.3	+0.1				
34%	40%	40%	38%	22%				

A young growthy sire with a very good pedigree, displaying heaps of carcase length and muscle.

BeefClass Structural Assessment

	F: 6 R: 4		F: 4 R: 4
	4		4
	41.5cm		20/01/04

MARKETING CONSULTANT
Chris Swale, Pyne Gould Guinness

29 AILSA G.R. MAJOR AM2114

VENDOR: AILSA FARM LTD, KIMBOLTON

TATTOO:
M2114

HERD:
0898

DOB:
24/09/02



RISSINGTON ADMIRAL AA347
Sire: TOKAWEKA HANDSOME AH801 (QA)
TOKAWEKA DESIREE AD426 (ET)

GLENSIDE FAST-TRACK AF7 (ET)
Dam: AILSA G.R. AJ9149
AILSA G.R. AE546

BW	200	400	600	MCW	Milk	MV	SS	Cwt
+0.9	+25	+38	+46		+15		+0.4	
76%	69%	61%	61%		40%		38%	

EMA	Rib	Rump	RBV%	IMF%	CE-d	CE-m	GL	DC
+1.8	-0.2	-0.5	+1.1	0.0				
33%	37%	37%	35%	21%				

Ailsa 2114 has exceptional breeding values for all traits. His sire has an EMA of +3.9 - one of the highest in Australasia within the Simmental breed.

BeefClass Structural Assessment

	F: 4 R: 4		F: 6 R: 6
	6		6
	42.5cm		20/01/04

MARKETING CONSULTANT
Richard Boyer, William & Kettles

30 KAREWA MOROCCO AM6 (ET)

VENDOR: J & L / D & L MCNAUGHTEN, DANNEVIRKE

TATTOO:
M6

HERD:
1249

DOB:
04/09/02



TOKAWEKA YEARLY 79/AY11
Sire: PUKEPUKE BRENT AB16
PUKEPUKE WIN 1398/AW6

SCOTTISH STRIKER 4693895
Dam: KAREWA ZAWI AZ153
KAREWA VANITY 1249/AX103

BW	200	400	600	MCW	Milk	MV	SS	Cwt
+1.2	+17	+28	+31	+29	+12			+21
76%	72%	72%	69%	59%	59%			63%

EMA	Rib	Rump	RBV%	IMF%	CE-d	CE-m	GL	DC
+0.8	0.0	-0.2	+0.5		+0.4	+1.0	-0.5	
46%	53%	53%	49%		35%	35%	56%	

A very smooth clean shouldered Bull with length and balance. Not used in service. BVD clear herd. Semen and service tested.

BeefClass Structural Assessment

	F: 6 R: 5		F: 6 R: 6
	6		6

MARKETING CONSULTANT
Kevin Ryan, Wrightson

31 OKAIR MAXIMUS AM1

VENDOR: J P & M B WAKEMAN, KAIAPOI

TATTOO:
M1

HERD:
0530

DOB:
15/08/02



LEVELS HANS 3/AX131E (ET)
Sire: **MONEYMORE CARDSHARK AD8**
MONEYMORE LAURA AZ60

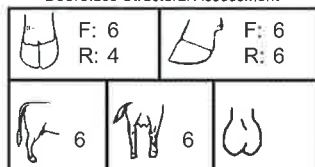
COOPENTAL TERRIFIC 921/AT2
Dam: **OKAIR AG24**
OKAIR AZ79

BW	200	400	600	MCW	Milk	MV	SS	Cwt
+1.2	+8	+19	+16	+11	+11			+11
58%	64%	66%	61%	51%	48%			56%

EMA	Rib	Rump	RBY%	IMF%	CE-d	CE-m	GL	DC

Quiet, upstanding well balanced bull. Grass fed. Not used in service.

BeefClass Structural Assessment



MARKETING CONSULTANT
Roger Keach, Pyne Gould Guinness

32 WAIWHARE MARSHALL AN189

VENDOR: J M GOULD (BRANCOTT FARM) TRUST, HASTINGS

TATTOO:
M189

HERD:
1477

DOB:
10/08/02



RISSINGTON BARNABY AB639
Sire: **POURIWAI EMPEROR AE21**
POURIWAI 1276/AY948

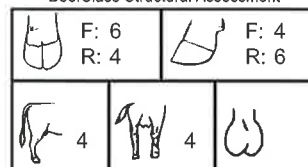
GLEN ANTHONY DEBONAIR AD19 (ET)
Dam: **WAIWHARE AH54 (QA)**
WAIWHARE AC155 (ET)

BW	200	400	600	MCW	Milk	MV	SS	Cwt
+2.2	+24	+35	+41	+37	+12			+28
77%	71%	72%	71%	60%	52%			62%

EMA	Rib	Rump	RBY%	IMF%	CE-d	CE-m	GL	DC
+2.2	-0.3	-0.5	+1.3	-0.1	-1.8		-0.7	
48%	55%	55%	52%	37%	35%		52%	

A sire with real width and substance. His Grandam AC 155 our top cow with four daughters in the herd. Top bull calf at foot. Semen tested and service tested.

BeefClass Structural Assessment



MARKETING CONSULTANT
Kevin Ryan, Wrightson

33 MONEYMORE NAVIGATOR AN2

VENDOR: ENTERPRISE CATTLE, WAKEFIELD NELSON

TATTOO:
N2

HERD:
1308

DOB:
27/02/03



LEVELS HANS 3/AX131E (ET)
Sire: **WILLOWBROOK HUGH AH23 (QA)**
WILLOWBROOK BERRY AB17

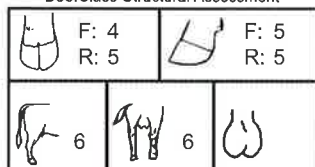
MONEYMORE EARTHQUAKE AB5
Dam: **MONEYMORE ULRICA AK60**
MONEYMORE ULRICA

BW	200	400	600	MCW	Milk	MV	SS	Cwt
+1.8	+17	+35	+33	+28	+12			+24
76%	71%	71%	67%	58%	47%			60%

EMA	Rib	Rump	RBY%	IMF%	CE-d	CE-m	GL	DC
+1.4	+0.2	+0.1	+0.4				+0.1	
48%	54%	54%	51%				51%	

Actual birth weight 40kg. Full vendor guarantee.

BeefClass Structural Assessment



MARKETING CONSULTANT
Roger Keach, Pyne Gould Guinness

34 MONEYMORE NINJA AN5

VENDOR: ENTERPRISE CATTLE, WAKEFIELD NELSON

TATTOO:
N5

HERD:
1308

DOB:
04/03/03



LEVELS HANS 3/AX131E (ET)
Sire: **WILLOWBROOK HUGH AH23 (QA)**
WILLOWBROOK BERRY AB17

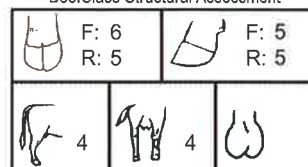
MONEYMORE EARTHQUAKE AB5
Dam: **ROCKVALE AJ908**
ROCKVALE AD229

BW	200	400	600	MCW	Milk	MV	SS	Cwt
+2.4	+20	+36	+39	+34	+11			+24
64%	67%	69%	64%	52%	46%			59%

EMA	Rib	Rump	RBY%	IMF%	CE-d	CE-m	GL	DC
+1.3	+0.4	+0.3	+0.1					
47%	53%	53%	50%					

Actual birth weight 41kg. Full vendor guarantee.

BeefClass Structural Assessment



MARKETING CONSULTANT
Wayne McLaren, Rural Livestock

35 KAPITI NEBRASKA AN14

VENDOR: B & M R MANSELL, PARAPARAUMU

TATTOO:
N14

HERD:
1519

DOB:
26/07/03



TOKAWEKA RASCALLION 79/AR29
Sire: SINGING HILLS DAMIEN AD7
SINGING HILLS 1106/AX37

POURIWAI GBK AG481
Dam: POURIWAI JACQUI AJ974
POURIWAI AF200

BW	200	400	600	MCW	Milk	MV	SS	Cwt
+3.0	+26	+42	+49	+46	+5		-0.1	+29
75%	71%	66%	65%	55%	53%		52%	55%

EMA	Rib	Rump	RBV%	IMF%	CE-d	CE-m	GL	DC
					-0.4		-2.0	
					35%		62%	

BeefClass Structural Assessment

	F: 5 R: 5		F: 4 R: 4
	4		4

MARKETING CONSULTANT
Ray Moss, Ray Moss Livestock

36 GLEN ANTHONY MATINA AM6

VENDOR: MR A H THOMPSON, WAIPUKURAU

TATTOO:
M6

HERD:
0299

DOB:
09/04/02



GLEN ANTHONY SGT. PEPPER AC27
Sire: GLEN ANTHONY GUINNESS
GLEN ANTHONY ZOE AZ4

BAR NONE MAINSTREAM AB194 (IMP CAN)
Dam: GLEN ANTHONY AH18 (ET)
GLEN ANTHONY BARINA AB12

BW	200	400	600	MCW	Milk	MV	SS	Cwt
+0.6	+12	+18	+15		+13			
61%	58%	58%	56%		44%			

EMA	Rib	Rump	RBV%	IMF%	CE-d	CE-m	GL	DC

BeefClass Structural Assessment

A tall dark red heifer with lots of scope. In calf to Glen Anthony Aristocrat - a big stylish calf will result.

	F: 4 R: 4		F: 4 R: 4
	6		4

MARKETING CONSULTANT
Kevin Ryan, Wrightson

37 LADBURN MERRIVALE AM304

VENDOR: MR A A T PARTRIDGE, LEESTON

TATTOO:
M304

HERD:
1168

DOB:
30/06/02



BAR 5 DIGNIFIED CSA 24960
Sire: MR DUSTY DIGNIFIED 10P T76947
MISS INDIANA 22206

MONEYMORE CARDSHARK AD8
Dam: LADBURN JEZABEEL AJ22 (QA)
LADBURN BELLE D'OR AB31

BW	200	400	600	MCW	Milk	MV	SS	Cwt
+4.3	+18	+27	+29	+28	+4			+12
74%	70%	70%	70%	61%	55%			62%

EMA	Rib	Rump	RBV%	IMF%	CE-d	CE-m	GL	DC
+1.4	+0.6	+0.6	+0.3	+0.1	-9.7	-10.5	-0.3	-0.8
44%	62%	62%	57%	49%	41%	42%	56%	40%

BeefClass Structural Assessment

	F: 6 R: 4		F: 5 R: 5
	6		6

A top Heifer with the credentials to make an outstanding stud cow. AI in calf to sterling U.B. Good

MARKETING CONSULTANT
Geoff Wright, Wrightson

38 GLEN ANTHONY MOSELLE AM30 (ET)

VENDOR: MR A H THOMPSON, WAIPUKURAU

TATTOO:
M30

HERD:
0299

DOB:
30/06/02



GLEN ANTHONY SGT. PEPPER AC27
Sire: GLEN ANTHONY GUINNESS
GLEN ANTHONY ZOE AZ4

SIEGFRIED 421175
Dam: RED OAK GRACE KELLY AD17 (ET)
MANALEUKA GRETA BBT PG035

BW	200	400	600	MCW	Milk	MV	SS	Cwt
+2.0	+14	+27	+30	+31	+8			+18
73%	68%	68%	64%	52%	46%			56%

EMA	Rib	Rump	RBV%	IMF%	CE-d	CE-m	GL	DC

BeefClass Structural Assessment

A lovely soft feminine heifer in calf to Glen Anthony Tralee who is noted for calving ease. Birth weight EBV 1.6 and milk +15.

	F: 4 R: 4		F: 6 R: 6
	6		6

MARKETING CONSULTANT
Kevin Ryan, Wrightson

39 PINELEE MARETTA AM7

VENDOR: G M & L E BAIN, MIDDLEMARCH

TATTOO:
M7

HERD:
1234

DOB:
08/07/02



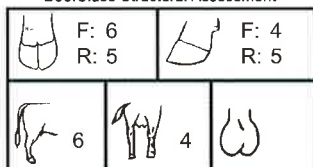
PINELEE DOSSE AD28 ET (ET)
Sire: PINELEE HIGHLANDER AH17 (QA)
PINELEE ESMAE (ET)

MAKERIKERI AF2
Dam: PINELEE HANNAH AH28 (QA)
PINELEE CAROL AC17 (ET)

BW	200	400	600	MCW	Milk	MV	SS	Cwt
+1.0	+14	+27	+23	+18	+15			+18
74%	67%	68%	64%	50%	39%			54%

EMA	Rib	Rump	RYBY%	IMF%	CE-d	CE-m	GL	DC

BeefClass Structural Assessment



MARKETING CONSULTANT
Mark Stevens, Wrightson

40 GLEN ANTHONY NGAIRE AN87 (ET)

VENDOR: MR A H THOMPSON, WAIPIKURAU

TATTOO:
N87

HERD:
0299

DOB:
27/07/03



GLEN ANTHONY ARISTOCRAT AA44
Sire: GLEN ANTHONY KAURI AK0024
GLEN ANTHONY AROHA AA43

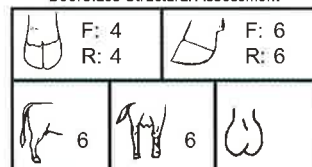
GLEN ANTHONY TRALEE AT70
Dam: GLEN ANTHONY ZOE AZ4
GLEN ANTHONY WONDER 299/AW1

BW	200	400	600	MCW	Milk	MV	SS	Cwt
+1.5	+16	+24	+28		+15			
58%	55%	55%	54%		49%			

EMA	Rib	Rump	RYBY%	IMF%	CE-d	CE-m	GL	DC

BeefClass Structural Assessment

A lovely compact dark red heifer with good growth genetics. Ngairam will compliment your herd with her classic markings and excellent growth EBVs.



MARKETING CONSULTANT
Kevin Ryan, Wrightson

41 On account of: Peter McWilliam Maungaraki Cattle Co, Gladstone, RD3, Masterton

WAI-ITI PREGNANT RECIPIENT B232

Recipient Due: 05/09/04

EMBRYO

SIM ROCK C&B WESTERN
BELL C&B WESTERN 2ND
ADRIAN
SIRE: GREAT GUNS MOSES 50D
MONET
HEIDI MISS KNIGHTS 5118
MISS KNIGHT 107N

WAIKITE AB136
WAIKITE LANDLORD
COOPENTAL AN12
DAM: WAI-ITI BUTTERFLY K40
WAI-ITI BLUE BEARD
WAI-ITI BUTTERFLY E139
WAI-ITI BUTTERFLY AB142

DONOR DAM:
WAI-ITI
BUTTERFLY K40
HERD BK NO.
1261 AK0040



CE	BW	Milk	200W	400W
-1.7	+4.9	+13	+30	+46
36%	80%	54%	70%	67%
600W	MCW	DC	CW	
+53	+55		+26	
66%	56%		55%	

This calf from this recipient will be a half sibling to our sale heifer Butterfly N134. Great Guns Moses combines calving ease with tremendous muscling. Check his EBVs (EMA +3.5).

MARKETING CONSULTANT: Mark Stevens, Wrightson

42 On account of: Peter McWilliam Maungaraki Cattle Co, Gladstone, RD3, Masterton

WAI-ITI PREGNANT RECIPIENT G176

Recipient Due: 05/09/04

EMBRYO

OVERALL BIRNER
BRH DOORN
WISP-WIL PETAL
SIRE: SHAWACRES JAHARI 50L
GREAT GUNS MOSES 50D
MISS SHAWACRES HEIDI
RHY FAYE 13F

GLEN ANTHONY SGT PEPPER
WAI-ITI FANDANGO
ROTOMARA EXAMINEE
DAM: WAI-ITI RINGLET H103
WAI-ITI BLUE BEARD
WAI-ITI RINGLET D14
RISSINGTON 9 RINGLET

DONOR DAM:
WAI-ITI
RINGLET H103
HERD BK NO.
1261 AH0103



CE	BW	Milk	200W	400W
-2.2	+4.6	+16	+29	+37
29%	79%	52%	72%	67%
600W	MCW	DC	CW	
+48	+54	-3.9	+23	
66%	53%	28%	54%	

The calf from this recipient carries the best possible combination of genetics, the maternal strengths and frame from Sgt Pepper and Blue Beard and the muscling and thickness of Jahari and Moses.

MARKETING CONSULTANT: Nathan Couper, W&K

43

On account of: Cornwall Park Simmentals
PO Box 26072, Epsom

PACKAGE OF 4 EMBRYOS

8 EMBRYOS FROM
DEUTSCHE LOCH

WAI-ITI LOCHNESS AZ4E
ROTOMORA COLLEN
DAM: WAI-ITI BUTTERFLY AB125
PAULUS
WAI-ITI PAULA 1
ROTOMORA UR5A

ZAMUTO

ZIKO
184
SIRE: ZIMBO
EMIL
335
184

SIRE: ZIMBO HERD BK NO. 6000AG3031

BW	Milk	200W	400W	600W	Mat W	Mat V	Gest
+5.6		+22	+27	+31			
82%		74%	58%	58%			



DONOR DAM:
WAI-ITI
BUTTERFLY AB125
HERD BK NO.

BW	Milk	200W	400W	600W	EMA
+2.8	+5	+17	+34	+45	+1.8
86%	72%	81%	81%	79%	47%

Dam reliable donor that sires champions. Sire: Double polled Bavarian Fleckvieh, Grandson of Zamuto, Double bred back to the great Haxl, Clean shoulder, Moderate framed, 45kgs birthweight.

MARKETING CONSULTANT: Bruce Orr, Wrightson

44

On account of: AA & LA Partridge, Glenalla Farm
Sedgemere, RD3, Leeston

PACKAGE OF 4 EMBRYOS

4 EMBRYOS FROM

TOKAWEKA YEARLY
PUKEPUKE BRENT AB16
PUKEPUKE WIN
DAM: KAREWA ELEGANT LADY
PUKEPUKE 16/AP43
KAREWA TAMIS 1249
WAINGATA MOLLY

OVERHALL HIVY
HOCKENHULL MAGNUM HCA M6
REGINA
SIRE: STERLING U.B.GOOD
OVERYBURY FIFI F3X
SOLTA

SIRE: STERLING U-B-GOOD HERD BK NO. 1400AU0003

BW	Milk	200W	400W	600W	Mat W	Mat V	Gest
+2.4	+11	+15	+22	+36			+1.8
84%	74%	80%	78%	78%			65%
SS	DC	P8 Fat	Rib Fat	EMA	IMF	RBV	CWT
	+3.0	-0.8	-0.5	+0.8	+0.1	+0.7	+21
	47%	51%	51%	42%	35%	47%	68%

DONOR DAM: KAREWA ELEGANT LADY HERD BK NO. 1249 AE0323

BW	Milk	200W	400W	600W	EMA
+3.8	+11	+25	+36	+50	+0.9
81%	70%	76%	73%	72%	39%

Dam a trait leader sire. A top embryo son of Hockenhull Magnum.

MARKETING CONSULTANT: Roger Keach, Pyne Gould Guinness

45

On account of: B & MR Mansell, Kapiti Simmentals,
123 Otahanga Rd, Paraparaumu

PACKAGE OF 4 EMBRYOS

4 EMBRYOS FROM

COOPENTAL TERRIFIC
RISSINGTON YUM YUM
RISSINGTON 49/BW195
DAM: KAPITI ESME
METAXAS
MUCKL

SCOTTISH STRIKER
TOKAWEKA RASCALLION
PUKEHUIA 706/BJ2
SIRE: ELDORADO
EGMONT
SALMA

SIRE: ELDORADO HERD BK NO. 6000AC2784

BW	Milk	200W	400W	600W	Mat W	Mat V	Gest
+1.3	+28	+39	+31	+43			-1.3
96%	91%	95%	95%	94%			91%
SS	DC	P8 Fat	Rib Fat	EMA	IMF	RBV	CWT
-0.1	+2.1	-1.3	-0.8	-0.6	-0.3	+0.8	+29
89%	58%	80%	80%	66%	55%	75%	86%

DONOR DAM: KAPITI ESME HERD BK NO. 1519AE0011

BW	Milk	200W	400W	600W	EMA
+3.2	+22	+29	+46	+55	
80%	71%	75%	74%	72%	

Esme, daughter of the great Rascallion, was a trait leader in 6 traits until removed from the herd for flushing combined with the legendary Eldorado.

MARKETING CONSULTANT: Bruce Orr, Wrightson

46

On account of: B & MR Mansell, Kapiti Simmentals,
123 Otahanga Rd, Paraparaumu

PACKAGE OF 4 EMBRYOS

4 EMBRYOS FROM

SCOTTISH STRIKER
TOKAWEKA RASCALLION
PUKEHUIA 706
DAM: KAPITI ESME
COOPENTAL TERRIFIC
RISSINGTON YUM YUM
RISSINGTON 49/BW195

LOPEZ 88/AL120E
COOPENTAL 921/AN12
COOPENTAL 103
SIRE: WAIKITE LANDLORD
LFE FIRE WORKS 280X
WAIKITE AZ133
SINGING HILLS BP36

SIRE: WAIKITE LANDLORD HERD BK NO. 1455AD0264

BW	Milk	200W	400W	600W	Mat W	Mat V	Gest
+3.1	+15	+27	+46	+57	+61		-2.6
97%	85%	95%	95%	95%	85%		83%
SS	DC	P8 Fat	Rib Fat	EMA	IMF	RBV	CWT
+0.3	+29	-0.7	-0.4	+0.4	+0.5	+0.2	+29
76%	87%	84%	84%	73%	57%	80%	87%

DONOR DAM: KAPITI ESME HERD BK NO. 1519AE0011

BW	Milk	200W	400W	600W	EMA
+3.2	+22	+29	+46	+55	
80%	71%	75%	74%	72%	

A powerful and unique combination which will produce some stunning calves.

MARKETING CONSULTANT: Bruce Orr, Wrightson



LEAFLAND SIMMENTAL STUD



LEAFLAND MADIBA

PUKEPUKE BRENT – KAREWA EBONY
NATIONAL SALE ENTRY – 2004

second annual sale

on property 5.00pm, 27 May 2004, North Taieri

12 bulls for sale, all scanned and quality assured. Sale bulls by Moneymore Crackerjack (polled),
Richwood Bruno (polled) and Bar 5 Kalgery. Barbeque and refreshments from 1600 hrs.

Sale starts at 1700 hrs. Sale will be held under cover.

Enquiries and inspection welcome.



Everd and Marié Strauss, Rapid 235, Wairongoa Road, RD 2, Mosgiel, North Taieri, Otago

Telephone/Fax (03) 489-7521 • Mobile (025) 248-5024 • Email strauss@es.co.nz

NEFF'S GOLDMINER 85G



Sired by Canadian Neff
Average Calving Weight: 44 kg
for 85G calves



Dam:
Klondike Flower GNM 1C

Maternal Granddam:
Anton Flower CSR 174T

- Intramuscular Marbling: 5.66
- Ribeye Area: 19.5 sq. inches

- Lean Meat Yield: 67%
- Backfat Measurement: 6.2 mm
- Mature Weight: 1204 Kilograms

Semen Price: \$40.00 per unit - 10 straws minimum
Thank you to Hampton Downs Simmentals and Cornwall Park Simmentals
for their semen orders

Enquiries to
Greg and Carol Bain
Phone: (780) 696-2593
Alberta, Canada
E-mail: gbain@telusplanet.net

To order semen call
Hampton Downs Simmentals
Malcolm and Ngaire Entwistle
Ph/Fax: (07)826-3194
E-mail: malcolm@ihug.co.nz

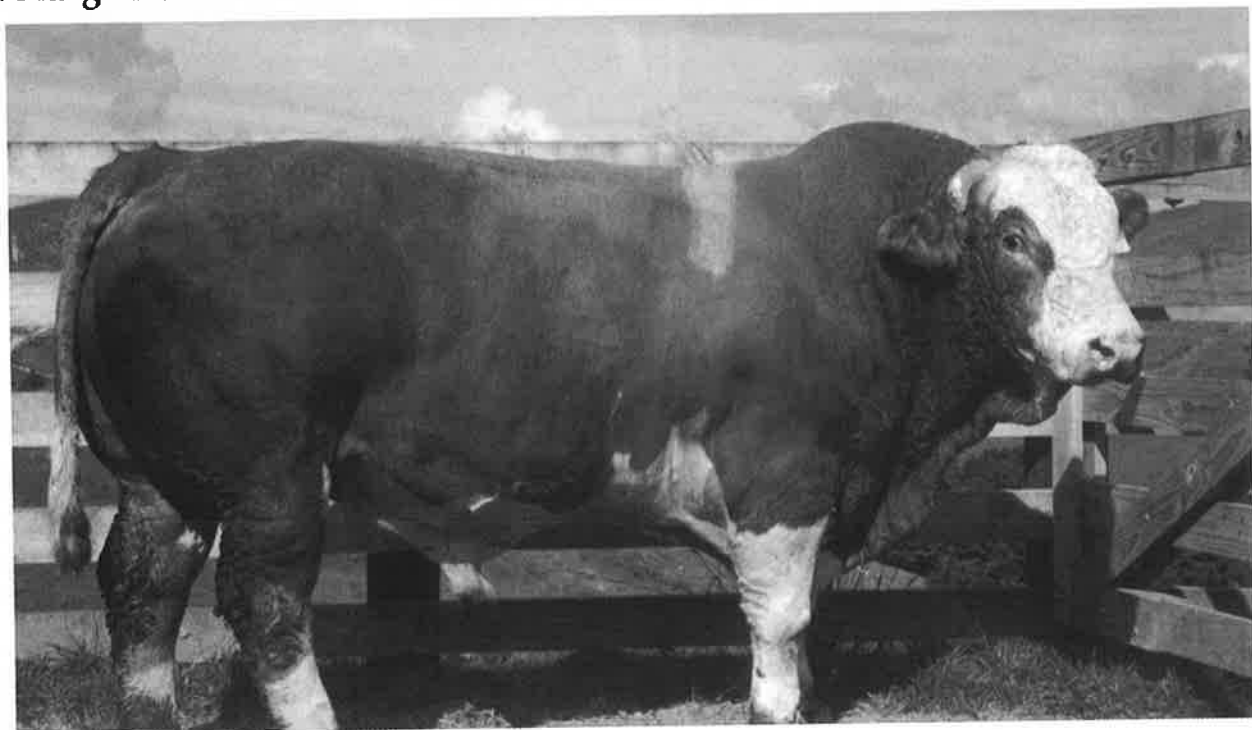


Riverbend Fleckvieh
SIMMENTALS

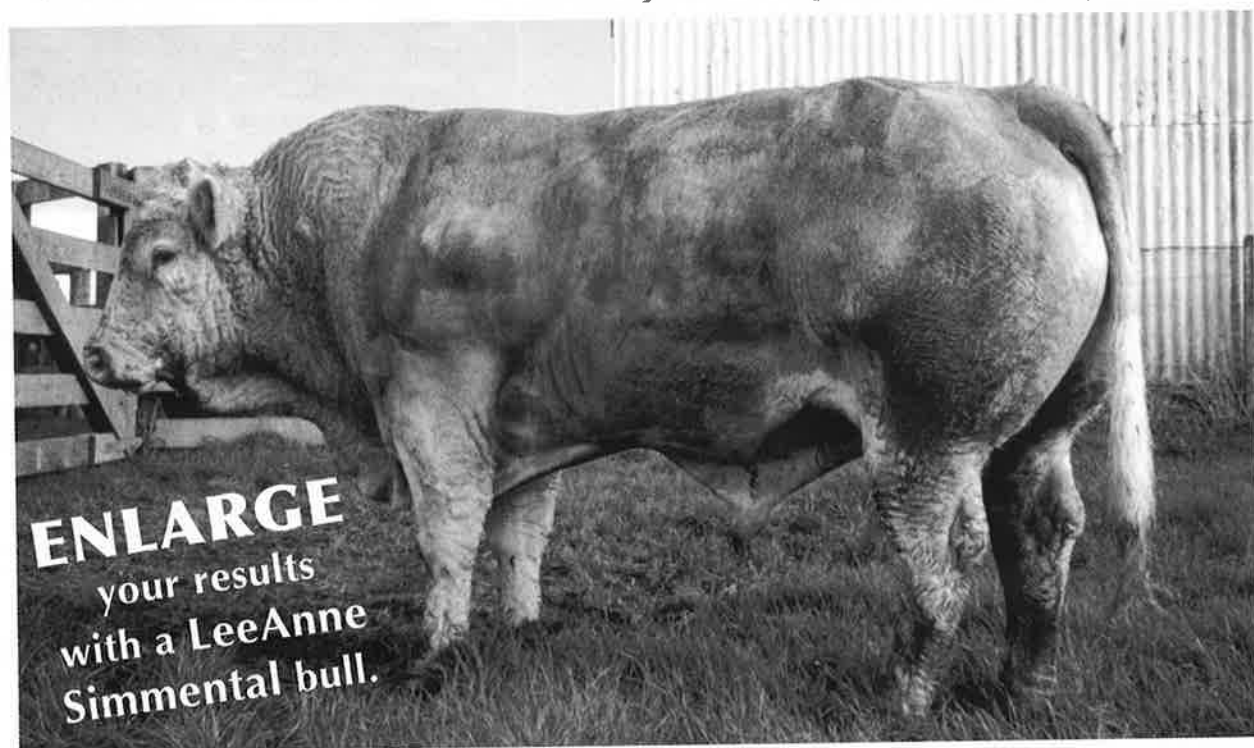


LEEANNE SIMMENTALS

A large herd farmed under commercial Northland hill country conditions.



At LeeAnne Simmentals, we are focused on your bottom line so our butts just keep getting bigger!

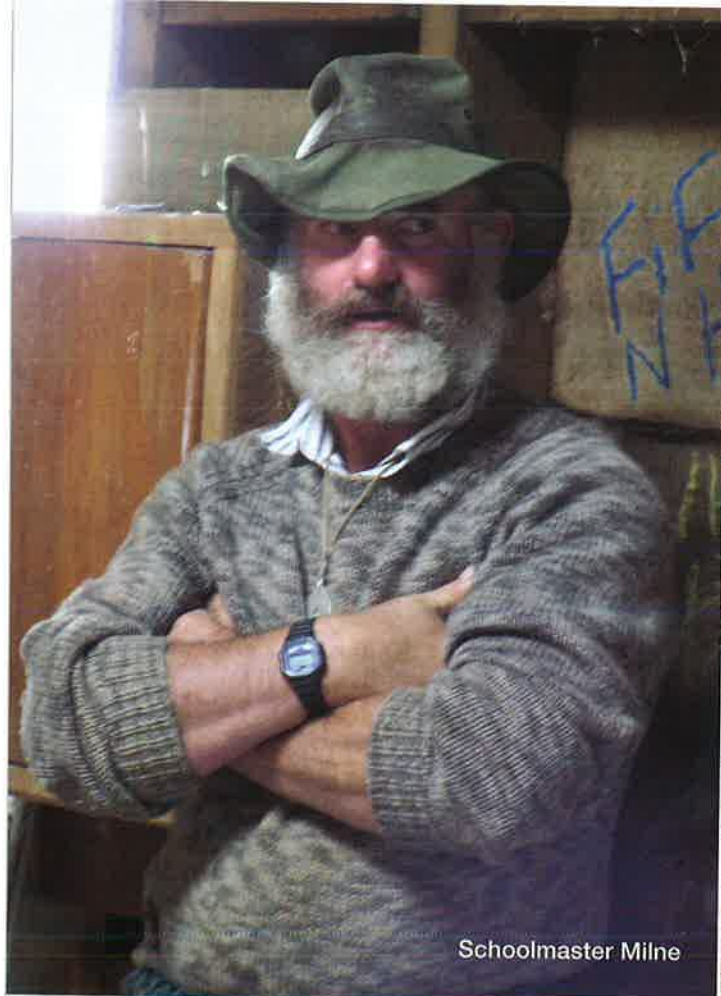


Bulls available anytime – All enquiries welcome.

Quentin & Tracey Robinson

Pikiwahine Road, RD1, Waiotira, NORTHLAND.

Ph (09) 437 0235 / Fax (09) 437 0735 / Email: leeannesimmentals@clear.net.nz



Schoolmaster Milne



Grant Latimer selecting for Beef Expo



BULL TEST STATION

Simmental NZ Boarding School for Boys

The Simmental NZ Boarding School for Boys is situated in the rolling hills just north of Kimbolton on Ian and Annie Harvey's property. Boys from a rural background are brought together in one environment for 12 months culminating at Bull Expo.

The school, now in its second year, was set up in 2002 for three main reasons.

Firstly, Beef Expo is supposed to be a "melting pot" of the top genetics in the country, but has an image of being a competition of feeding. Many past employers have been disappointed having tried boys from Beef Expo and found the contract ended twelve months down the track. Parents have stuffed McDonalds into their sons and brought them along looking like Sumo wrestlers. Unfortunately once the boys are put to work some soon pack it in – a problem with youth today according to our grandfathers!! Future employers have become wary of seeking employees from this source. Also it was not unusual to find some boys needed to go on "anger management" courses once they got out of their cosseted environment.

Simmental NZ Boarding School for Boys eliminates these fears as their boys will become men under a strictly commercial, transparent environment. Performance is paramount – excellence has to be achieved to graduate. All boys go before a panel of selectors with stringent criteria and come out with a Simmental NZ Quality Assurance Assessment.

The second reason for the school is that there is an increasing belief by many in the agricultural sector that there is too much selection by computers and we are losing, to our detriment, basic stockmanship skills. The weight gain information gathered over the 12 month period will be more information for the CV which stockmen can use to assess genetic worth as all the boys will be on a "level playing field". The system also sorts out any behavioural problems – offenders are expelled. Sexual preference is also assessed, flying in the face of many social policies but which the school makes no apologies for. In the light of research coming out of America with sheep and the fact that dancing classes with the Girls High School were ruled out by the School Board, the boys attitude to, and prowess with the opposite sex is evaluated – certainly a first for Schools in NZ and indeed the world!!

The third reason for the School was looking at a different approach to the feeding of the boys. Not so much a case of evaluating greasy meatballs (with cigarette butts floating in them) are better than muesli and yoghurt for breakfast by setting target weights and then feed accordingly. The end target weight was 810 kgs with monthly weight gains set to achieve this on pasture with the occasional supplementation of baleage. From this a monthly feed budget was done matching required pasture availability to demand. Nitrogen is used to balance the equation.

The first term in 2004 started for 30 boys on 21 May with an averaged weight of 388 kilograms. The boys made good progress for the first five months – putting more weight on than in the previous year. Their progress slowed in November and December and came to a halt in January. The reason why, we are not sure, except in spite of being given a copper capsule on arrival, it was found that copper levels were very low. This was rectified in March. The "Big Storm" had a huge influence on stock throughout the region with many deaths either through drowning or exposure. However, with covers of 2500 kg DM/ha in front of them the boys should be looking well come graduation in May. Last years' boys' graduation created a good deal of interest across all breeds as it was a first for Beef Expo. Four boys made over \$10,000 and went to studs. Other breeds are now looking at following in Simmental NZ's footsteps and doing the same thing. The Harvey's became the Monitor farm this year, consequently the "School" has a good deal of exposure which should make for an interesting graduation ceremony.

— ALASTAIR MILNE

Cariboo

SIMMENTAL STUD

Annual Bull Sale

23rd June 2004

INSPECTION WELCOME

Contact

Jim and Liz Mackey

Ph/Fax 09 433 9718

Mobile 0272 456 235

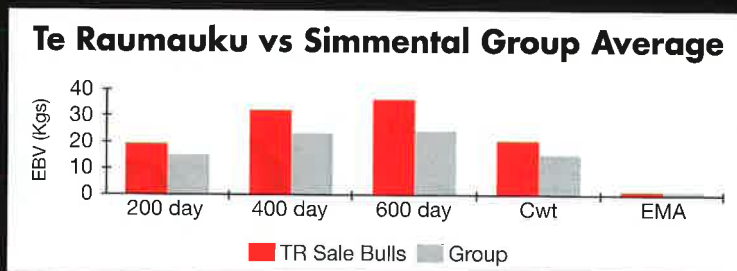
E-Mail

jimmack@xtra.co.nz

TRS Te Raumauku Simmentals



BALANCED HILL COUNTRY BULLS



At The Te Kuiti Liveweight Selling Centre
Thursday 10th June 2004 - 1pm



Enquiries welcome always with no obligation
Phone Peter & Anna Scott

(07) 873 - 8413

Te Raumauku & Potawa Simmentals

combined with Ipurua South Devons
to offer 45 commercially run

Hill Country Bulls

Te Kuiti Liveweight Selling Centre

Thursday 10th June 2004 - 1pm

ANDREW & TRACEY NEAL

488 Mangaotaki Road, RD1, Piopio.

Ph/Fax 07 877 8009 Email potawa@ihug.co.nz

POTAWA SIMMENTALS

Pouriwai AJ 823 - 2004 EBVs

BW	200W	400W	600W	Carc.W	Scrotal
+2.2	+34	+56	+59	+37	51cm
86%	81%	77%	76%	65%	

On Farm - Open Day
6th May 2004

All Welcome

King Country Combined
Annual Bull Sale
10th June 2004

in conjunction with

Te Raumauku Simmentals
& Ipurua South Devons
at Te Kuiti Selling Centre

Pouriwai AJ 823 - one Herd Sire of our 2003 calf drop



NSW TOUR

April 2004

This year 33 Simmental N.Z. members and Breed Manager Errol Harvey took part in a six day tour of N.S.W. from Sydney to Tamworth and back. This tour was organised by Peter McWilliam, who took us to the area that he worked in as a young man associated with the renowned 'Dunmore' stud.

We were joined by Simmental Australia's Breed Manager Peter Speers and for one day by Brad Crook from A.B.R.I. He is the man responsible for Breedplan and EBV's. We also had the opportunity to meet and network with the President and Vice President of Simmental Australia.

Two features of Australian Simmental breeding worthy of special mention are:

- 1 The importance they place in their advertising on the commercial value of their animals as being superior to any other in a cross-breeding programme and in yield and quality on the hook.
- 2 The size and volume of the cows we saw. Very much a return to the traditional European cattle. They claim to be aiming to breed moderate sized cattle but those we saw were larger than moderate by New Zealand standards.

Our first Stud visit was to Derek and Shelley Piper of 'Piper Simmentals' near Coolah. Derek farms 5000 acres of rolling hills and river flats that are so fertile he does not need to use any fertiliser. Most of the flats are planted in lucerne for grazing not hay. He cell grazes all his mobs much to the amazement of his neighbours. His cells are seven and a half acres on

the flats and 10 acres on the hills and he has a 35 cell rotation. He has 300 Commercial Simmental cows mated to a Simmental bull and a small Stud of 30 to 40 cows. Like all the Australian breeders he is keen on Showing. We discovered the Shows are the big social event of the year over there.

Peter and Charmaine Cook's 'Barana Simmentals' was the next stop and we were impressed with the evenness and adherence to type in his rising 2yr heifers and bulls which were penned for our inspection. Peter breeds for the commercially minded in an area that is subject to severe droughts so his cattle were leaning toward moderate in size. He has 161 Stud cows and 500 commercial Simmental cows.

After a night in Tamworth we met Peter Howarth, a big man with big visions for his area centred on the tiny and very unique town of Nundle. Peter took us firstly to his Blue Stripe processing plant which concentrates on producing a quality product from every cut. The emphasis is on what the consumer wants.

We then visited the only really dry area we saw all tour where the Australian President Graham Jordan had trucked his Sydney Show team and a selection of cows and calves in for our inspection. The Show cows were particularly impressive. It was a great pity that we were unable to see them being judged at the Show the following week.

On to Nundle where Peter and Judy Howarth have created a tourist haven and employment by building a woollen mill and converting old buildings into accommodation. It would have to



be one of the most peaceful areas on earth.

Rory and Patricia Murphy's 'Monreid Stud' was a real treat. Rory established his Stud in 1972 using Hereford/Brahman cross cows as his base. His cows are big with enormous capacity and the calves on them were most impressive. No wonder he tops the weaner fairs. His line up of young bulls was equally impressive. It was great to see someone who has been in the breed since it started still having the passion to continue onward and upward. Rory is also a keen dog trialist.

Our last day around the Studs was spent on Peter and Judy Howarth's beautiful 'Wombramurra' properties near Nundle. Early settlers cleared all the trees from their 500 acre blocks, went broke and left. Peter now has 17,000 acres of this fertile valley based on black basalt soil, with 4000 sheep and 4000 cows; he has replanted native trees (gums!) using local seed. Wild dogs and dingoes are a problem as is blackberry. Water reticulation and fencing are priorities. He is using cell grazing to good effect. He now has 12,000 acres in 40 acre paddocks. 7 km of pipe from artesian supply keeps them watered from long troughs. Peter believes cattle given a choice, always drink fresh water. He says the cost was repaid in 2 years.

With Gunter Bretschneider, Peter started the Simmental herd 23 years ago. The stud, 'Langton-Gate Poll Simmentals', numbers 200 polled cows, all purebreds and recorded. It is the largest polled herd in Australia. The stud showed very successfully from 1980 to 1984 but since then Langton-gate has ceased showing.

They used polled sires from the start, including Polonius, Poll Prime, Poll Classic, Swiss Poll Red, and Sgt Pepper. He supplies bulls for his own use and has sold at the 'Hills of Gold' sales on the property for the last 15 years. No supplementary feeding, but he does offer a 'salad bar'-selection of minerals in rice hulls- for ad lib choice during hard times. I could go on and on about this inspirational Australian. He made all of us sit up and listen as he commented on his life and farming adventures during our bus tour around his properties.

Back at the homestead we looked through the slab cottage museum complete with old things domestic including letters and bills. Peter saved the collection from the Founding owners when he bought the farm.

After lunch on the veranda of their home, slaking our thirst on this beautiful Aussie clear sunny April day, we said farewell to Jake, their pet kangaroo. Craig Martin thanked Peter and Judy for their extraordinary hospitality, and Peter McWilliam for having such great friends and arranging the trip. Inspired and weary, we climbed back on the bus with Colin, for a 5 hour trip down the New England Highway to Sydney.

The Sydney Show, Harbour cruises and Lebanese Feasts in Oxford street beckoned. Time and space forbid me from saying any more except that 34 members had a great time and got to know each other and Australia.

Plan now for the Canadian tour including the Calgary stampede in July 06.



Pouriwai Simmentals

TB ACCREDITED • ALL BULLS SERVICE TESTED

*Pouriwai will be selling 15 bulls at our own sale
– Thursday 20th May at 12.30,
Matawhero Sale Yards, GISBORNE*

POURIWAI AM 606

Sire: Waikite Land Mark AH 171 Dam: Pouriwai AE 844

2004 Breedplan EBV's

BW	200 Milk	200 Wt	400 Wt	600 Wt
+3.0	+10	+25	+47	+46
77%	48%	72%	72%	69%

Carc Wt	EMA	Rib F	Rump F	RBY%
+28	+1.2	-0.5	-0.8	+0.9
60%	40%	47%	47%	45%



**ENQUIRIES
WELCOME**

Duncan MacPherson – Ph: (06) 867 0821

Gerald Kemp – Ph: (06) 867 0867, Fax: (06) 867 7443, Email: pouriwai@extra.co.nz

PINELEE SIMMENTALS



*The Bain Family
would like to thank
the Simmental
Society and its
Members for all
its support after
Graeme's death.*

One of the two heifers on offer at this years Beef Expo

Sire: Pinelee Highlander
PINELEE MARETTA AM7

Dam: Pinelee Hannah AH28

Enquiries to:
Lorraine Bain
03 464 3226

Terrilynnne DISPERSAL

On March the 5th this year, the long standing Terrilynnne Stud was dispersed.



“ This herd was established 28 years ago in those heady, early Simmental years... ”

This herd was established 28 years ago in those heady, early Simmental years by Terry and Lynne Sloane on their farm at Mata, a little south of Whangarei. There are only 12 studs of longer standing listed in the 2003 Sire Summary and a number of those are not now in operation.

In the 70s and 80s, Lynne and Terry used their good stockmanship and cattle breeding skills, to establish the type of cattle for which Terrilynnne is known today. Due to the comparatively warm, but very wet, Northland winters, and the heavy clay soil types on their property, they built a large wintering barn for the cows.

Terry and Lynne were always active in, and supportive of, the Society. They enjoyed the Simmental Congress trip to Australia.

After Terry's untimely death in a farm accident in late 1989, Lynne continued to farm the property on her own. With her stock skills and astute genetic purchases, she produced bulls that sold well at the Kauri Simmental Breeders Bull Sale.

Lynne attended the Swiss World Congress in 1990, although the enjoyment of it was surely constrained by Terry's recent death.

A partial dispersal sale two years ago was followed by Lynne's reluctant decision to disperse the entire herd.

The cattle were presented in very good condition, and their temperament was impeccable. The sale itself ran on oiled wheels.

It was unfortunate that no Councillors were able to attend, but the Society was represented by two Life Members. The elder of these, Jim Houlbrooke, did sterling service in assisting with the marshalling of the cattle. Other Simmental colleagues from Northland and further afield also assisted Lynne with the sale.

Buyers were from Northland, Waikato, King Country and Gisborne to as far south as Wairoa in Northern Hawkes Bay.

Lynne's dispersal sale achieved good prices and a good clearance. I'm sure there will be many very satisfied purchasers.

— JOHN SCOTT

RESULTS

COWS
HEIFERS, RISING TWO YEAR OLD
HEIFER CALVES
BULL CALVES
HERD SIRES


40 out of 42 sold at an average price of \$1435.

14 of 17 sold at an average price of \$1190.

All eight sold at an average of \$900.

Ten of the twelve offered sold at an average of \$1600.

Terrilynnne Luke, a son of the long standing herd sire, Puketawa Echo, sold for \$4500. Cornwall Park Lieutenant Dred, who was bought at the 2003 National sale, was sold for \$5000. Both sires went to the King Country stud of Andrew and Tracy Neal.


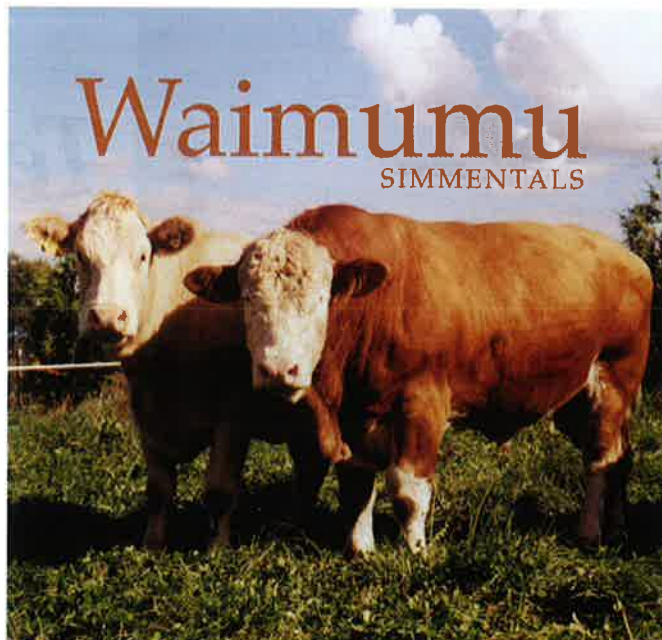


**ISLAND STREAM
Simmental Stud**
MAHENO, NORTH OTAGO

*will offer these well muscled
bulls for sale at the*

**CENTRAL SOUTH ISLAND
SIMMENTAL SALE, Temuka, 17 June**

Enquiries and inspection welcome
Murray Elliott • Phone 03-434-8397

Waimumu
SIMMENTALS

**Bulls sold by
private treaty**

DAVID LUNT
122 Taplin Road, R.D.3 Hamilton
Ph:07 829 5474 / Fax:07 829 5874

Ruaview Simmentals

Extreme
soundness

Excellence
in temperament

High milk
production

Full eye
pigmentation

Strong bone

Very easy
doing cattle



(Semen available P.O.A.)

John & Helen Hammond

801 Raetihi Road, R D 1, Ohakune.
Ph/Fax (06) 385 8040 email: John_Helen@xtra.co.nz

GRAEME MORRIS BAIN

12/6/1938 – 31/5/2003

GRAEME BAIN was born on a dairy farm in Wakari, just out of Dunedin and lived all his life in Central Otago or Northern Southland. In 1950 the family moved to a sheep farm near Lumsden where he travelled some distance daily to secondary school at Gore. Graeme boarded at Gore High for his second year of High School. Graeme worked in school holidays for Vic Chewing on the farm that discovered the grass 'Chewings Fescue', working alongside and as hard as grown men. Many a night Graeme fell asleep between dinner and dessert at the table.

From Lumsden, Graeme moved to Paretai with his parents, where his father milked cows, then they moved to Henley on the Taieri Plain milking 100 cows, the largest herd at the time on the Taieri.

In 1960, at a dance in the St Kilda Town Hall, Graeme met Lorraine. They subsequently married in 1962 and worked for Lands & Survey at Te Anau for two years, then to Kaiwera just out of Gore to work for Alan Copeland. Graeme and Lorraine then moved to Macrae's Flat working for Mick Sutherland. When the property passed on to nephews, Graeme and Lorraine had to move on and went to Hindon as head shepherd, then on to managing, prior to drawing a ballot farm in 1978.

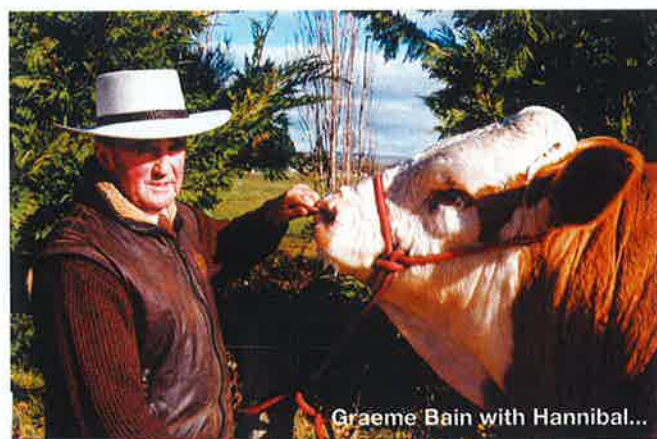
652 acres at Lake Mahinerangi at (1800 ft above sea level) became their pride and joy and the culmination of 20 years of hard work and devotion. By now Graeme was 40 years old and shortly after, he suffered a coronary which was to affect the course of the remainder of his life. But Graeme was not one to sit about and take life easy. In 1981 the Bains set about establishing a Simmental herd. Their introduction to Simmentals was through raising cross bred Simmental weaners on their Lake Mahinerangi farm.

At the time of his illness Graeme decided it was time to do what he wanted – raise Simmental Cattle. Throughout his life he had maintained a love of breeding Arab horses and dogs which never ceased, but Simmentals became the passion he devoted his life to until the end.

The "Pinelee" herd had its foundation based on 8 cows purchased from Ron Sycamore's "Halfway Bush" herd near Dunedin.

In 1998 they sold the farm and moved to their present property – 217 acres of flat easier land in Middlemarch. Throughout their herd's development they were never scared to invest in cattle, with 2 notable purchases; in 1984 Rissingholme Napoleon for \$17,000 at the South Island Sale and 1989 Levels Gunda, the highest priced heifer for \$15,000.

They showed their cattle extensively and Graeme loved to compete and win but his biggest enjoyment was mixing with people who shared his love of Simmental Cattle. They have enjoyed the privilege of joining a select group of breeders who have bred a Royal Show and Beef Expo Supreme Champion.



Graeme Bain with Hannibal...



...and with Lady Di.

First, the Beef Expo in 2000 and latterly, the Royal Show in 2001.

Throughout his involvement with the Simmental fraternity, Graeme's health was not good. The testimony to the man was that he was always bright cheery and good humoured, never giving any indication of the way he really felt. His good humour was infectious and enthusiastic. His personal determination not to allow illness to control his life was immense. By choice he worked until the end, never contemplating an easier life. He loved what he was doing. Graeme worked all his life until he physically could no longer do so. Even under treatment, he would still work his dogs and care for his cattle.

Throughout, Graeme was an active member, and it was fitting that his greatest moment with the cattle was shortly before his death. The Annual Tour visited the Bains at their home in Middlemarch. Where was Graeme? Waiting in the yards, readying bulls to parade for us to view.

He accepted the hand life dealt him, and lived a valuable and fulfilled life with Lorraine. Whilst he was small in stature he had a huge spirit. Graeme was a rare breed. He will be greatly missed and long remembered. He is survived by his wife Lorraine and their 3 children, Roger, Ken and Heather.

— CRAIG MARTIN

BULLS FOR THE INDUSTRY

BULLS AVAILABLE
2004 BEEF EXPO
LED & UNLED

SELECTION PERFORMANCE RESULTS

GRANT LATIMER

www.cornwall-park-simmentals.co.nz

CORNWALL PARK SIMMENTALS

NEW! Maxi Male



**New
Maxi Male**

**Double Maxi
Combination**



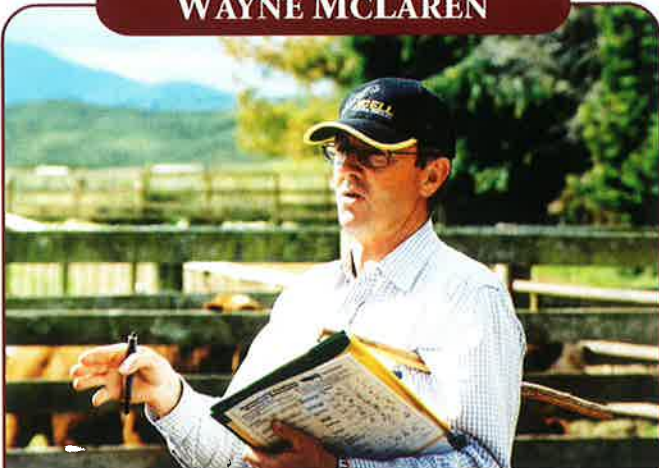
Allflex - No. 1 in livestock identification

Marking comparison



**Which tag is easiest
to read?**

WAYNE MCLAREN



Beef Class Structural Assessment

ACCREDITED ASSESSOR

*New Zealand's only
Beefclass accredited assessor has been
introducing Simmental breeders to the latest
in structural assessment techniques.*

Wayne McLaren, based in the South Island, says the word "consultant" doesn't sit comfortably with him, but when you see his CV you've got to wonder why.

He has so many fingers in beef industry pies he must have contributed plenty over the years.

He says the Beefclass structural assessment method is going to change the way farmers buy seedstock.

McLaren has been used by Simmental New Zealand to introduce its breeders to the method at three workshops recently held around New Zealand.

The former Dalgety and Wrightson studstock agent owns a business, McLaren Ultrasound, specialising in carcase data collection. He employs three accredited Breedplan scanners.

He is also beef product manager for Xcell Breeding Services, which has seen him travel extensively through Australia, Canada and the United States sourcing beef genetics. And McLaren still finds time to fulfill his role as a stud stock representative for Rural Livestock Ltd in Canterbury.

Then there's the judging aspect of his career. McLaren has tutored judging seminars run by the Royal Agricultural Society and has judged at various A and P Shows around New Zealand.

He believes the Simmental breed society has been very proactive in implementing the Beefclass structural assessment system.

The structural assessment method is also available for use by other breeds.



Contact the A.I. professional team:

*Xcell Breeding Services Ltd
South Island Breeding Centre
175 Main Road, P.O. Box 165
Kaia Poi 8252*

*Ph: 03-327 9555 Fax: 03-327 9088
Email: xcell@xtra.co.nz*

Beef Product Manager

Wayne McLaren

Mobile: 0274 321 523

*Ph: 03 347 4200 Fax: 03 347 4201
Email: mclaren.us@xtra.co.nz*

Lynbrae SIMMENTALS

*Semen from
Lynbrae Kashmir
(Rascallion/Zania)*

BWT	200Wt	400Wt	600Wt
+3.4	+34	+47	+61

\$50.00 per Straw
(minimum 10 straws)

Contact

JOAN HILL (09) 437 5942
PETER HILL Bus (09) 438 3875
A/H (09) 437 5948
Email: peter@peterhill.co.nz

Simmental

livestock and genetics.

Quality inputs for maximum output.

The best genetic inputs are those that suit your situation today. To locate the specific genetic characteristics you need, you must consider all the options. Your local Wrightson Studstock team are constantly in touch with Simmental stud breeders, nationwide.

They know there's a lot more to the Simmental business than statistics. They understand just how important factors such as existing herd type, terrain, pasture and economics can be when you're choosing genetics.

**Talk to your Wrightson Studstock Representative
today, he understands the big picture.**

Bruce Orr

Hamilton
029 958 2611

Neville Clark

East Coast
029 986 1537

Kevin Ryan

Hawke's Bay
025 426 894

Mark Stevens

Manawatu
029 953 2340

Geoff Wright

Canterbury
029 908 0612

Simon Cox

Otago
0274 325 766

Neil McCrostle

Southland
0274 335 112



www.wrightson.co.nz



Wrightson

KAREWA SIMMENTALS



Interesting stud prospects
at BEEF EXPO 2004.



Stud and commercial Bulls
for sale by private treaty.



John & Lorraine McNaughten Ph/Fax 06-374-1551
Doug & Linda McNaughten Ph/Fax 06-374-1575
98 Rakaiatai Road, R.D. 7, Dannevirke

TAPUATA SIMMENTALS

SOUTHERN HAWKES BAY

Featuring a rising generation



Greetings from SHB!

Those who guess the sire of these calves do not go
into a draw for a straw of Scottish Striker semen.

**Something learned at Tapuata –
Lightning does strike more than
once in one place.**

G & D Prenter • Phone (06) 374 5724 • Dannevirke

CHAMPIONS IN CATTLE HANDLING

Your partner in stud stock handling

Rotating Yoke Headbails™

Awarded for
Silence

Awarded for
best access for
the operator

Awarded for
being Quickest
Easiest & Safest
to work



**7 times
Award
Winner**

WINNER
OF SEVEN
AWARDS

Cattle Handlers™

Features the Rotating Yoke Headbail
"The Key" to Excellence in Handling

Awarded for
Top performance

NZ
most efficient,
fastest and safest,
to work Cattle
Handler with at
least 20 more
features than any
alternative



WINNER
OF SEVEN
AWARDS

Smart-Yard™ Systems



Tru-
Curve™
steel
yards

- Specialized in Standard and customized yards
- Design consultancy
- Enhancing existing wooden yards
- Full range of yard components

TECHNIPHARM®
FOREVER...BETTER

free 0800 80 90 98

Web: www.technipharm.co.nz Email: sales@technipharm.co.nz

LADBURN SIMMENTALS

EST 1979

Member Simmental Stud Breeders Scheme

Performance Plus • Stud & Commercial Bulls



*LADBURN HAPPINESS with daughter LADBURN NANDINA
Great Guns Karl Calf*



*LADBURN NORDIC – Embryo son of HAPPINESS
By ANCHOR 'T' METRO*

**Bulls available at National Sale, 17 May
and by private treaty.**

Enquiries Tony and Lorraine Partridge, Sedgemere, No. 3RD, Leeston
Welcome Tel/Fax: (03) 324-2733 Mobile: (025) 393-958



National Beef Cattle Improvement Scheme of SOUTH AFRICA

The Simmental breed is one of the three most popular beef breeds in South Africa. The breed's ability to adapt to the vastly different production systems and climatic conditions allowed it to spread throughout the whole country.

The breed is widely used in cross breeding programs with Bos Indicus cattle to improve milk production, fertility and weaning weights.

Simmental cross calves are very popular with feedlots because of their ability to grow and to adapt to intensive feeding conditions.

National progeny testing under feedlot conditions and grazing conditions are available for all pedigree beef breeds.

The Simmental breed society, like many others, adopted a compulsive progeny testing for all their members.

THE NATIONAL BEEF CATTLE IMPROVEMENT SCHEME is run by the Animal Improvement Institute and is available to all breeds. The scheme comprises of seven phases, namely:

- ◆ Reproductive phase [Phase A 1] – **COMPULSORY**
- ◆ Suckling phase [Phase A 2] – **COMPULSORY**
- ◆ Post weaning phases – On farm recordings [Phase B] – **OPTIONAL**
 - Central performance tests [Phase C] – **OPTIONAL**
 - On-farm performance tests [Phase D] – **OPTIONAL**
 - Feedlot recordings [Phase E 1] – **OPTIONAL**
- ◆ Slaughter phase [Phase E 2] – **OPTIONAL**

For the purpose of this article we will concentrate on Phase C and Phase D tests.

PHASE C TESTS

Phase C tests measure post weaning growth rates and feed conversion ratios of young bulls under standardised conditions at central testing centres, where animals are fed individually, with electronic transponders. Simmental calves, between 5 and 7 months old, with empty stomach weight between 260 and 320kg, are accepted in the test. The bull calves are tested under standardised conditions for a period of 84 days following an adaptation period of 28 days. The same diet is fed in all testing centres. The bulls are fed ad lib, and their exact intakes are measured through their transponder. The bulls are weighed at weekly intervals, and scrotal circumference is measured at the end of the test. Average daily gain [ADG], average daily gain per age [ADA] and feed conversion ratios [FCR] are calculated for every bull at completion of the test. The performance of each bull is compared to bulls of the same breed in the same test but also with bulls of the same breed that have been tested over the last 5 years on all the testing stations. All bulls are inspected by a breed inspector at completion of the test to ensure structural correctness and compliance with breed standards. A performance certificate [gold, silver, bronze, merit, sub-merit] is awarded to every bull according to minimum standards for the different merits and bulls are branded accordingly on the left shoulder.

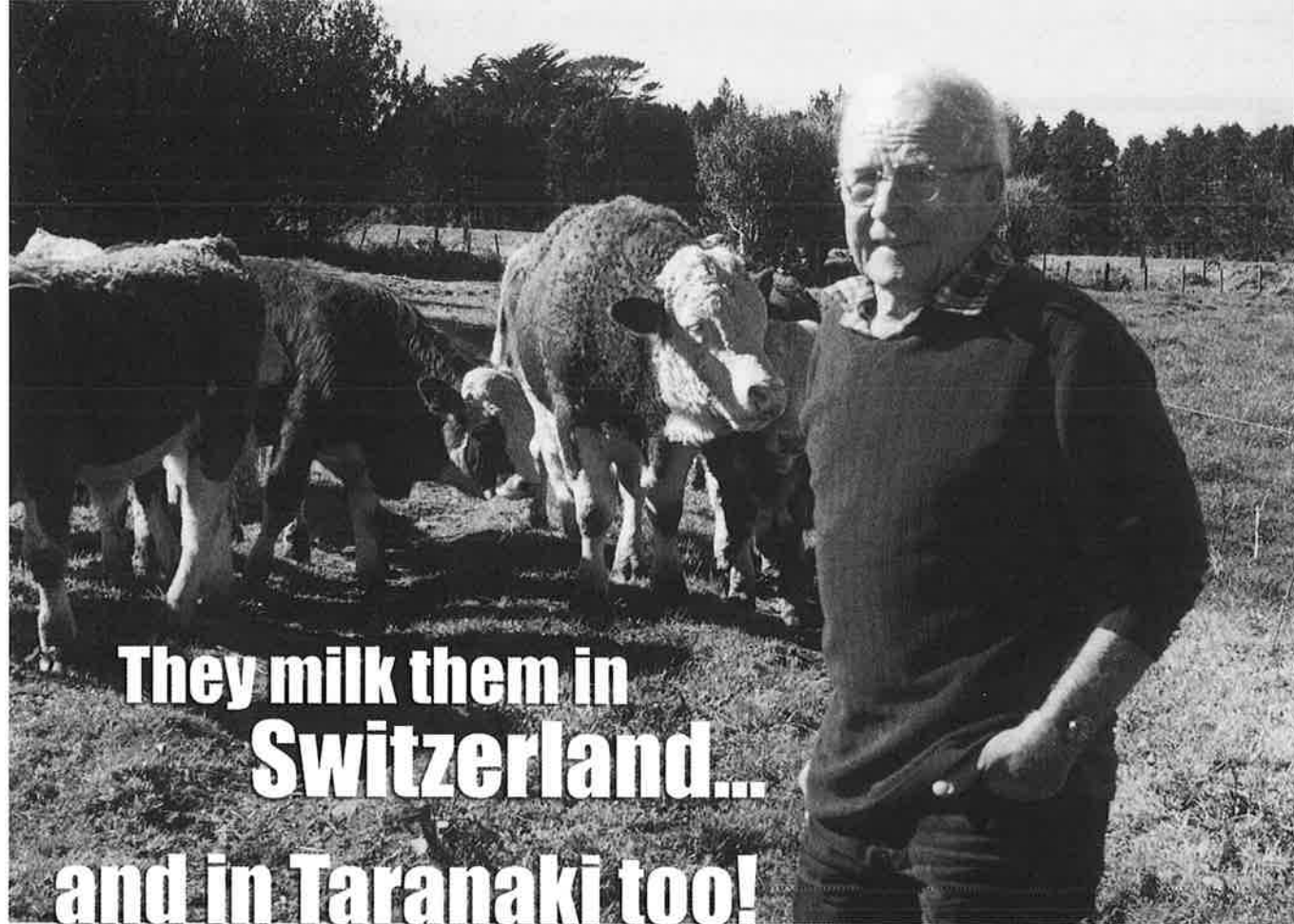
PHASE D TESTS

Single or multiple herd tests can be run on farm and are regarded as official if supervised by the institute, and at least 10 bulls of a particular breed are enrolled. Ages of bulls should not vary more than 100 days, and live weight should not vary by more than 85kg for Simmental bulls. Phase D test last at least 84 days for intensive feeding test, and up to 270 days for extensive grazing tests. Adaptation periods can be up to 90 days for extensive tests, where bulls come from different climatic conditions. Average daily gain, average daily gain per age, and efficiency values, are calculated for every bull at the end of the test period, and they receive performance certificates according to their performance. Feed conversion rates on pastures is expressed in the efficiency index, and is calculated by the ARC using the Kleiber method.

Every breed selects an annual winner of the Phase C test to compete against the other breeds in a prestigious national competition at the Pretoria show. Bulls that completed the phase C and D tests sell at premium prices at sales, and on farms all over the country, and feedlots often encourage their producers to buy performance tested bulls.

In my opinion, the Simmental breeding society of South Africa is a very innovative society, who place a lot of emphasis on production and performance testing.

— HENNIE STRYDOM



They milk them in Switzerland... and in Taranaki too!

The dairy cows on Werner Gut's Taranaki dairy farm do not look like normal Taranaki dairy cows.

They are not Jerseys, Friesians, nor crossbreds. They are not even Swiss Browns nor Ayrshires.

They look more like faded Hereford beef cattle.

Werner and his son Jason farm on the slopes of Mt Egmont just below Dawson Falls.

The fact they milk a herd of Simmental dairy cows – more commonly a beef breed in this country – comes as a surprise to the traditional New Zealand dairyfarmer. It may also surprise beef farmers.

But for Swiss-born Werner Gut (71) and his Swiss-born second wife Theresa*, it's natural to milk Simmentals. That's what many European dairyfarmers milk.

The slopes of Mt Egmont are a long way from the streets of Zurich where Werner grew up as a city boy.

Werner was not a member of the Swiss families who settled around Kaponga early last century. He arrived in New Zealand from Switzerland in 1949 as a 20-year-old, determined to farm.

Unlike the Dutch and British immigrants of that era, he paid his own way as NZ did not have an agreement with Switzerland for assisted immigration.

He already had the skills. He had bred stud rabbits as a child and had spent 2 years at a Swiss agricultural college. He also had worked for 2 years on a dairyfarm before leaving his homeland.

He first worked for a year as a farmhand, then began a 6-year stint working as a 50:50 sharemilker for Bernie Hollard, of *Hollard Gardens'* fame.

At 25 he married an Australian nurse working in Hawera. They had 6 children: Robert, who runs 500 beef cattle next

door; Jason, who works on the home place; Bruce, who milks 140 Friesians next door; Joanne, who lives in Hong Kong; Debbie, who lives in Geneva; and Werner, a landscape gardener and ski instructor in Switzerland.

For Werner, farm ownership was no easy road, especially with 6 children to bring up. He bought his 83ha farm in 1955, moving on to it in 1956. The land straddled 3 rivers and 10 creeks, and included 5ha of native bush.

The land was flat to rolling, rough and rocky, and completely covered in ragwort. It had been condemned by the local council to be a sheep farm. There was also an old, ramshackle house.

At the time he paid \$14,000 for what seemed then an almost worthless tract. Its altitude was 500 metres and it received 3000mm of rain per year.

Though the uphill slog to bring in the land took almost all his time, he began milking a small herd of cows.

"It was so nice to be free and to own my own land," he says now.

He had a heavy mortgage and children were coming, but he was energetic and enthusiastic.

That energy led him to plant 10,000 pine trees along the creeks and rivers over the years.

He started out with a Friesian herd, but was intrigued with the Simmentals when they were introduced into NZ as a beef breed 1970-71. He'd worked with them in Switzerland and decided they were the cows he wanted to milk.

He says his choice was mainly based on his feelings about his homeland rather than straight production. And he had to milk because there was not enough money in beef cattle.

He hasn't regretted it. Buying semen – he hasn't bought an animal in 40 years – he bred up his original herd, getting

his first purebred Simmental (15/16ths) in 1977. Today 75% of his 80-cow herd is purebred, though he still keeps 10 Friesians for comparison purposes.

About a dozen cows are used as milk cows to rear the bulls that he considers an equally important part of his operation.

"I've always bred for both easy calving, beef and milk, emphasising protein," he says. His herd is dual purpose.

Since 1979 and a visit to Gratz, Austria, he has obtained all his semen through the Austrian *Steiermark* progeny testing programme for milk and beef.

Much of the Simmental and other dairy and beef bloodlines in this country are imported via United States, a movement he describes as 'rather frightening'.

"I thought it was best to go back to the source..."

He has not gone to Switzerland for his Simmental semen because he reckons 'the breed there has gone to the dogs' as cow numbers have dropped with the switch of farm land to other uses and crossbreeding.

For him the early days of breeding up Simmentals were 'really exciting'. NZ's first 2 purebred Simmental heifers sold to Australia for \$45,000 each.

Running a seasonal operation – the herd goes on to once-a-day early in March and is dried-off about May 20 depending on grass growth and the weather – he produces some 22,000kg MS (MF 4.40%, protein 3.72%, and 275kg MS/cow) over the average 250-day lactation.

Calving is timed for mid to late August. He winters all stock on the farm, using home-harvested pit silage, balage and hay fed out on shingle areas during feed pinches.

His herd, though based on Austrian merit sires, has a recorded ancestry of 77%, BW of 17/37 and PW of -8/59. Because of these, he discounts *LIC*'s figures, considering the NZ evaluation methods 'a joke' when it comes to considering cows like his.

As an example, he says the top dairy-proven Austrian sire, has a BW of -75, while a Hereford sire with no dairy progeny is -11.

"That's *LIC* logic," he says.

Despite the NZ industry evaluation figures, he adds that he gets at least 6¢/kg MS above the average payout for his premium-grade milk.

Werner notes though that he is not 'a fanatic' about milking as he relies on his beef production as well for his income.

"What we lose in milk we gain in cow and beef sales. We usually rear 16 to 20 bulls which we sell as yearlings and 2-year-olds in the paddock, mostly to regular clientele."

He is a member of the *Simmental Society* and was on its council for 6 years. At the *National Beef Bull Sales* in Palmerston North he has secured up to \$8500 a bull, as well as having the top Simmental bull.

He also sells his empty cull cows, though because they are 'extremely fertile' there are few of those.

A couple of years ago the Simmental breed was almost supplanted in Werner's heart by a 'new' old breed he discovered on a trip to the Black Forest in Germany.

The breed, the Hinterwalder, originated in the Black Forest. It is about the same size as a Jersey and could be the ideal cross for Taranaki's Jerseys, he believes. Its excellent, high-quality beef calves could be a sideline for small Taranaki dairyfarmers.

There are only a few thousand Hinterwalder cows left in the world. They have the colour and markings of a Simmental, but a mature weight of only 350-400kg.

Never having calving problems, their hardiness and build is similar to Highland cattle, thriving on poor soils and steeply contoured country. Some, he says, are milked in herds of 15 to 30 cows with the herd-testing results of all 278 purebreds being 3411kg milk, 4.01% fat, 137kg, and 3.37% protein, 115kg.

Werner says though, most of the cows are used for rearing calves on grass, hay and grass silage, depending on the time of year.

The calves are then fed for 4 to 6 weeks on grain and slaughtered, with a carcass weight of 170 to 200kg, for a niche beef market that pays double

the price of ordinary beef.

"I've never tasted better meat," when slaughtered, bone out at 57% meat.

"I have loved and studied cattle all my life and rarely have I been so impressed by a breed," Werner wrote on his return from Germany. "Perhaps there could be a niche for these beautiful and useful cattle in New Zealand."

He adds: "I have the vision. I wish I were a young man again. There's so much to do."

— JOHN WAUGH



[Published with the permission of the NZ Dairy Exporter]

Internet Solutions

Simmental NZ/Breedplan Database – Now on the web.

Do you wish to:

- Check the latest EBVs of your favourite AI sire?
- Find phone/fax details for other Breedplan herds in your province?
- Research the pedigree of any registered animal?
- Screen the latest Sire Summary for an AI sire suitable for use in your herd?
- Search upcoming Auction sales for a suitable bull to purchase?
- Rank your current drop of calves by various BreedObject \$Indexes or EBVs?

There is no need to phone the Simmental NZ office for this information anymore. It is available on the Internet at www.simmental.co.nz on the Simmental NZ home page, just use your mouse to click on Internet Solutions button.

Background

As part of its Breedplan services to Breed Associations, ABRI has developed an extensive range of web-based services, easily accessible to anyone worldwide who has access to the Internet. These systems have entry to the Association's pedigree and performance database, which has been built up over many years of performance recording and accurate bookkeeping. The online database is an invaluable tool to the serious cattle producer.

Internet Solutions is the name given to a family of products put together by ABRI that puts important breed information in the public domain and more recently makes on-line internet-based services available to breed society members.

On-Line Sales catalogues

When sales cataloguing your animals, there will be the facility to include sales comments, photographs, logos etc. The NZPBB Graphics Dept can arrange a print version of your catalogue at minimal cost and with no typo errors as the information is downloaded directly from the Breedplan database. As sales cataloguing procedures will involve processing time at the NZPBB office, there will be minimal

administration charges depending on what is required. The Cataloguing charges made by ABRI will be around \$1.50+gst per lot. There will be more information about this later.

Getting started

Searching animals with particular characteristics is one of the most useful features of the database software.

Try this example...

At the Simmental NZ website, on the home page under the INTERNET SOLUTIONS button you will find four options:

1. How to use internet solutions
2. Animal enquiry
3. EBV enquiry
4. Member enquiry



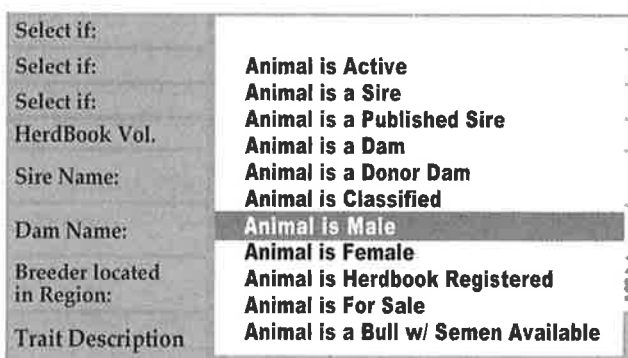
Select "EBV enquiry" with your mouse. A template will appear on your screen to enable you to put in the search specifications of your choice.

For example: To search for a 2 year year old bull;

- Type in "2002" in the box beside the field: "calving years"

Calving Year(s):
Enter one or more calving years separated by commas.

- In the "select if" field, choose – "Animal is male" from the drop down menu.



There are 3 "select if" fields; you can choose options in all three fields if you want - eg. you could specify "Animal is Herdbook Registered" or "Animal is a Sire".

Remember the more criteria , the less animals will be in your selection. You may have to go back and broaden the selection criteria.

Down the screen/page you will see under the heading "Trait Description", a list of the measured traits. You can enter figures in any of these fields to set selection criteria. As an example, try entering the birthweight field +3kg, 600day weight +30kg, and Milk +10.

Trait Description	Min	Max
Calv. Ease Direct (%)		
Calv. Ease Dtrs (%)		
Gest. Len. (days)		
Birth Wt. (kg)		3
200 Day Wt. (kg)		
400 Day Wt. (kg)		
600 Day Wt. (kg)		30
Mat. Cow Wt. (kg)		
Milk (kg)		10
Scrotal Size (cm)		
Days to Calv.		
Carcase Wt. (kg)		
Eye Muscle Area (sq. cm)		
Rib Fat (mm)		
Rump Fat (mm)		
Retail Beef Yield (%)		
IMF %		

You can now move to the bottom of the screen and in the second from bottom line beside the "Sort By " button, click on the drop down menu and choose which order you want your animals listed by.

Sort By: **Animal Name** 

All that remains is to click on the "Search" button and wait – a short wait if you are lucky enough to be on jetstream

or a long wait if you are at the end of 50 kms of busy lines and old copper wire .

The 100 animals that fit the criteria appear on the screen (trait leading EBV's are shaded). Clicking on the individual animals gives access to more information on each of these selected animals .

Sales catalogues

Another popular feature of the system is the ability to search for animals across all currently listed sale catalogues. This enables potential bull buyers to analyse sale animals currently available in their province. Simply choose the "Sales catalogues" button to initiate this action.

Tips

When searching for an individual animal, you only need to specify sufficient criteria for the animal to be located in the database. If you know the animal identity, then just specify this, otherwise just specify all or part of its name. By specifying too many items eg Identity, sex, calving-year etc, there is a greater likelihood of an error occurring.

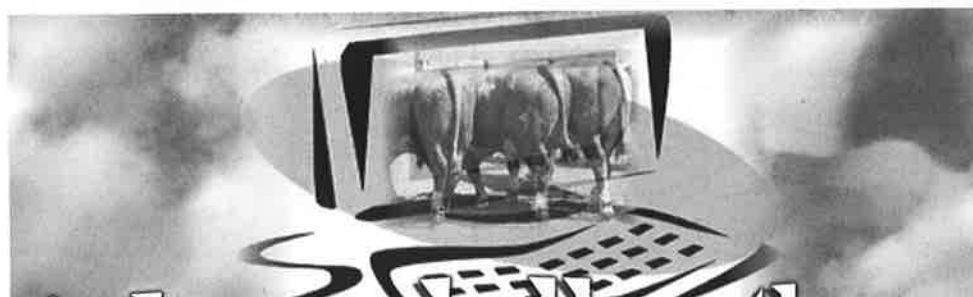
Don't put in too many criteria initially, you may not find many or any animals that fit. Start with a few key EBV's or criteria, and if the program finds too many animals, go back and fine-tune your selection by adding other criteria or altering your numbers.

Please give me feedback-

Ring me or write to me or email me. I want to know how you are finding the programme. I should be able to help.

Errol Harvey

Breed Manager



Find your bull on the net

www.simmental.co.nz

AI SIRES DIRECTORY 2004

Bar 5 SA Hero 823M

sire	Hagen Kykso Hadau Kykso Daune 78	dam	Kykso Aljaka Kykso Alen Kykso Enbau
	Kykso Haped Dior Kykso Pedodi Kykso Pemdobi 81		Ru-Dev Peppi Wisp-Will Mandrake 4th Ru-Dev Prunel Wisp-Will Penny 3rd 85

Semen
\$60+gst
per straw
(minimum
10 straws)



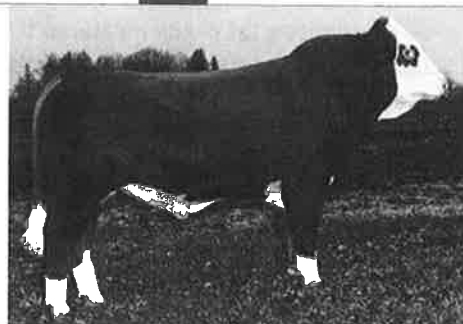
Another full South African embryo out of Canada, sired by the powerful Kysko Haped. Haped is out of a cow voted by the World Congress visitors as the perfect cow. Haped is the most important A.I. sire in South Africa for his performance. Hero carries good pigmentation, is dark red, thick topped and a deep quartered young bull standing on sound black feet and good legs. Hero's sister, Pearl, recently sold for Can \$42,000 and what a cow she is going to be!

Contact: Malcolm and Ngaire Entwistle
Hampton Downs Rd, RD 2, Te Kauwhata
Phone/Fax 07-826-3194 / Email malcolme@ihug.co.nz

Marywood Polled Western (91J)

sire	Sim-Roc C&B Western Elton Polled Western 23H Elton Ms Polled Charm 28C	dam	BHR MR Awesum B638E Bar 5 Ms Awesum 277G Four Island Gem 290
------	--	-----	--

Semen
\$60+gst
per straw
(minimum
10 straws)



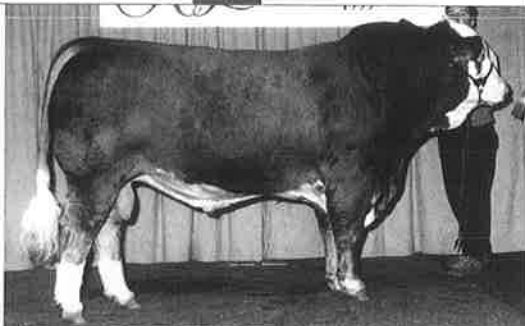
Double polled fullblood Fleckvieh Canadian genetics; almost certainly homozygous polled with 20 calves on the ground at Hampton Downs, all polled trend setting sires in his pedigree such as: Sim-Roc C&B Western and BHR Mr Awesum B638E. High growth, the MPW calves at Hampton Downs weaning heaviest overall in 2003, many above 450kgs. A muscle machine – thick, flat topped on a heavily muscled backend, moderate framed and early maturing; solid dark red goggle eyed.

Contact: Malcolm and Ngaire Entwistle
Hampton Downs Rd, RD 2, Te Kauwhata
Phone/Fax 07-826-3194 / Email malcolme@ihug.co.nz

Richwood Bruno (809G)

sire	Sir Arnold 809G Richwood Tophand 809C 3J Ms Western 19Z	dam	Great Guns Bruno 21X Marywood Burnadette HRC Abbey 12A
------	---	-----	--

Semen
\$60+gst
per straw
(minimum
10 straws)



Homozygous 7/8 Fleckvieh polled fullblood genetics; Canadian; outcross to a lot of what is in NZ; trend setting sires in his pedigree such as BEL C7B Western II and Sir Arnold 809G; top calving ease, his sire being a genetic trait leader for birthweight; high maternal strengths with positive mce, milk and mwww; acceptable weight gain performance; solid dark red with full goggles; lots of muscle with thickness; moderate frame; length of body and depth of rib; smooth shoulder.

Contact: Malcolm and Ngaire Entwistle
Hampton Downs Rd, RD 2, Te Kauwhata
Phone/Fax 07-826-3194 / Email malcolme@ihug.co.nz

Zimbo

sire	Zamur Zamuto Sandra Ziko Herbert 184 384	dam	Empau Emil Berta 335 Herbert 184 384
------	--	-----	--

Semen
\$75+gst
per straw
(minimum
10 straws)



Double polled Bavarian Fleckvieh, Grandson of Zamuto. Double bred back to the great Haxl. Solid dark red patterned with huge goggles both eyes. Lots of muscle with incredible depth through his quarter. Clean shoulder. Moderate framed. 45kgs birthweight. 47cm scrotal.

Contact: Malcolm and Ngaire Entwistle
Hampton Downs Rd, RD 2, Te Kauwhata
Phone/Fax 07-826-3194 / Email malcolme@ihug.co.nz

Semen for Sale Listing

CONTACT	SIRE	COST
MAUNGARAKI CATTLE CO Phone: 06 372 7724 Fax: 06 372 7770 Email: p-s-mcwilliam@xtra.co.nz	Waikite Landlord	\$50 + GST per straw
	Wai-iti Blue Beard	\$50 + GST per straw
	Glen Anthony Sgt Pepper	\$50 + GST per straw
	Nga Tawa Brave Heart	\$50 + GST per straw
	Austrian Bubi Sire: Belami	\$30 + GST per straw
	Dunmore Cossack II Sire: Dunmore Lester	\$40 + GST per straw
	Lonsdale Farm Bernard Sire: Beat CSA41	\$25 + GST per straw
	Munga Park Frederic Sire: Canadian Extra CSA357	\$25 + GST per straw
	Wai-iti Warrior Sire: Dunmore Cossack	\$25 + GST per straw
	Wai-iti Loch Ness Sire: Deutsche Loch	\$40 + GST per straw
	Cotswold Farm Meat Machine Sire: Cotswold Farm Hector	\$35 + GST per straw
	Switz Poll Red (Polled) Sire: Tosca	\$40 + GST per straw
	Deutsche Loch Sire: Loch	\$100 + GST per straw
	Maxl	\$50 + GST per straw
	Bernd	\$50 + GST per straw
	Leonardo	\$50 + GST per straw
W J & E M MACKEY CARIBOO SIMMENTALS RD 4, Hikurangi, Northland Phone: 09 433 9718 Fax: 09 433 9718	Tokaweka Dynamic Sire: L.S. Lopez 88/AL120E	\$50 + GST per straw (minimum 10 straws)
GRANT LATIMER CORNWALL PARK PO Box 26-072, Epsom, Auckland Phone: 09 524 9483 Email: maungakiekie@xtra.co.nz	Waikete Landmark AH171	\$30 + GST per straw
JANINE WALLACE / BARBARA GLOVER HIGH VALLEY SIMMENTALS 478 Miranda Rd, RD 1, Pokeno Phone/Fax: 07 873 8413 Email: info@spermex.com	Laki 2 PP	\$85 + GST per straw (minimum 10 straws)
	Hornig	\$60 + GST per straw (minimum 10 straws)
	Mallard	\$70 + GST per straw (minimum 10 straws)
	Polik	\$60 + GST per straw (minimum 10 straws)
	Poker	\$60 + GST per straw (minimum 10 straws)
	Leon	\$60 + GST per straw (minimum 10 straws)
NUWELAND SIMMENTALS Phone: 09 407 9039 Fax: 09 407 9013	TFS Arizona AY7 Sire: TFS Warbonnet	\$80 + GST per straw

CONTACT	SIRE	COST
JOHN SCOTT PUKETAWA SIMMENTALS Phone: 07 827 2864 Fax: 07 827 2977 Email: john.scott@clear.net.nz	Puketawa Boomerang AB133 Sire: Puketawa Yodel Puketawa Gti G126 Sire: Rissington Admiral Puketawa Hansa AH175 Sire: Puketawa Felix Dam: HCC Flame/Sir Nick 56U	\$40 + GST per straw Trait leader for carcass weight, milk and scrotal size \$50 + GST per straw Homozygous polled – based on 83 progeny all without horns. 400 Day Weight trait leader to 200 Day Weight trait leader. Semen is in limited quantity. \$50 + GST per straw Homozygous polled – based on 45 progeny all without horns.
J & L & D & L MCNAUGHTEN 98 Rakaiatai Rd RD 7, Dannevirke Phone/Fax: 06 374 1551	Karewa G Man Sire: Puke Puke Brent	\$50 + GST per straw (minimum 10 straws)
HAMPTON DOWNS SIMMENTAL Hampton Downs Rd, RD 2 Te Kauwhata Phone: 07 826 3194 Fax: 07 826 3194	Richwood Bruno Sire: Richwood Tophand 809C Bar 5 Vuurslag Sire: Hakbos Vuurslag Zimbo Sire: Ziko Marywood Polled Western Sire: Elton Polled Western 23H	\$60 per straw (minimum 10 straws) \$60 per straw (minimum 10 straws) \$75 per straw (minimum 10 straws) \$60 per straw (minimum 10 straws)
PETER & ANNA SCOTT TE RAUMAUKU SIMMENTALS Phone: 07 873 8413	Wai-iti Bazooka Sire: Wai-iti Mr X Singing Hills Damien Sire: Tokaweka Rascallion	\$45 + GST per straw (minimum 5 straws) \$60 + GST per straw (minimum 5 straws)
COLIN PATTERSON 22 Spring Place, Leeston Phone/Fax: 03 324 4347	Tokaweka Dramatic (298 straws)	\$30 + GST per straw (minimum 20 straws)
ROSS & JEANETTE ANDERSON TAWHERO SIMMENTAL Phone: 09 433 4870 Mobile: 021 455 417	Eisenherz Two Look Caesar Black Baron ER Polled Master Bar 5 Vuurslag Bar 5 Kalgary Eldorado Bar 5 Ibbaroo Richwood Bruno Pukepuke Brent Singing Hills Damien Rocky PP SSS-SCF Autobahn	1 straw @ \$50 1 straw @ \$20 2 straws @ \$15 2 straws @ \$60 7 straws @ \$40 1 straw @ \$40 1 straw @ \$40 19 straws @ \$40 8 straws @ \$50 2 straws @ \$40 5 straws @ \$40 5 straws @ \$40 10 straws @ \$40



PGG *livestock*

Pyne Gould Guinness Limited

Pedigree.. Performance..

Profit.. PGG Studstock..

Four Ps of Mind



Roger Keach
Stud Stock Specialist
Canterbury/Marlborough/Westland
Phone: 03-322 1451
Mobile: 0274-321384



Callum Dunnett
Stud Stock Specialist
Otago/Southland
Phone: 03-208 9096
Mobile: 0274-336443

**PGG Stud Stock continues to be a proud supporter of all
Simmental Breeders throughout New Zealand**

www.pgg.co.nz



Innovation

in herd management

herdMASTER

herdMASTER - Saltbush Software's exciting new Herd Management package will keep proactive cattle producers at the leading-edge of technology. Submit registration and performance data via email, access the web and email clients from within the program. If you are looking for improved on-farm efficiency, **herdMASTER** will help you pinpoint the performers in your herd and make your stud recording a breeze!

TIM BRITTAIN COMPUTING



ADDRESS: PO Box 389, Te Awamutu
PHONE: 0800 438 822
Web Site: <http://saltbush.une.edu.au>

GLENANTHONY • THE CHAMPION TEAM



Royal Show, Hastings 2003

BEEF EXPO

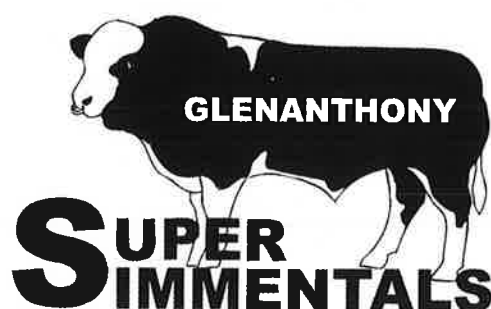
17th May 2004

**Glenanthony Entries
Two 2yr heifers
One heifer calf**

AWARD WINNING SIMMENTALS

**All bulls semen and
service tested.**

**All bulls ranked on
the FALKIRK index system
for commercial meat yield.**



**Tony & Glennis Thompson
RD4 • Waipukurau**

**Phone & Fax 06 858 8705
Mobile 025 280 6148**

15th ANNUAL BULL SALE

**Wed 16th June 2004
825 Farm Road
WAIPUKURAU**

30 TOP BULLS

comprehensive breeders index

NAME	ADDRESS/ EMAIL	CONTACT PHONE/FAX	PADDOCK SALES	AUCTION SALE	BEEF EXPO
Ailsa Farm	RD54, Kimbolton	Ph/Fax 06-322 9883 Ph/Fax 06-322 9839	10 From Spring	9 June	1
<i>Comments: Cows run as a commercial herd on medium to steep hill country.</i>					
Alridge B A & T I	Vass Rd, Ladbroke, RD2 Christchurch	03-329 6269			
Anderson R H & J Tawhero Simmental	81 Ruapekapeka Rd, Towai RD2, Hikurangi Email roscos@xtra.co.nz	Ph 09-433 4870 Fax 09-433 4871 Cell 021-455-417	10 Available now		
<i>Comments: 2 year old and yearlings polled and horned.</i>					
Back Partnership D & B	PO Box 36, Stratford	06-765 5191			
Bain G M & L E	"Pinelee" RD1, Middlemarch	Ph 03-464 3226 Fax 03- 464 3226	6 From March		1
Black G W	Shepherds Bush Ltd, RD8 Ashburton				
Boyle G & A	Evertree, RD4, Waipawa	06-856 5505			
Burgess W T	"Beresford", Puketiro, RD2, Owaka burgessbunch@xtra.co.nz	03-415 8019	Yes From May	Owaka 26 May, 2 pm	
<i>Comments: 2yo bulls on offer at the Owaka Combined Bull Sale</i>					
Burnside D J & L A	Te Akau Rd, RD1, Ngaruawahia	Ph 07 825 4860 Fax 07-825 4860			
<i>Comments: Bred at Te Akau under severe dry summer conditions. Hill country bulls that shift well.</i>					
Caird I R	Pareora West, RD2, Timaru	03-686 4879	Yes From August	Temuka 17 June	
Cairns C R	Duntroon, 5KRD, Oamaru	03-431 2826			
Cameron R & C Idesia Simmentals	Kirikopuni Valley Rd RD2, Tangitoria, Northland idesiasimmentals@hotmail.com	09-433 2722	15 Available now		
Capstick A & S	Hay Rd, RD2, Hikurangi Northland	09-433 4831			
Cheetham D E	Mangamahoe, RD2, Eketahuna	06-372 5831 06-372 5841	No All sold		
Clayton D	420 Middleton Rd, RD4, Waipukarau				
Cockburn G R	"Mount Prospect" RD2 Te Anau	03-249 7082 03-249 7085		25 May Lumsden	1
<i>Comments: Whole herd run on a commercial basis – bulls fully guaranteed, bred to shift and perform under all conditions.</i>					
Collier A D & Sons	PO Box 99, Taumaranui	07-896 6984			
Conlan E J	Waikoikoi, RD5, Gore	03 207 6880	Yes Available Now		
Cornwall Park Simmentals	PO Box 26-072, Epsom Auckland	09-524 9483	Yes From May	Waikato Club Sale 12 July	5
Crosby R L & L E	750 Awaroa Rd, Broadwood	09-409 5133	Yes Available now		
<i>Comments: A limited number of yearling bulls also available.</i>					
Curry W & S	Ohura Rd, RD22, Stratford	06-762 3861			
Dickie D G	Windyridge, Five Rivers, RD3 Lumsden	03-248 7559			

comprehensive breeders index

NAME	ADDRESS/ EMAIL	CONTACT PHONE/FAX	PADDOCK SALES	AUCTION SALE	BEEF EXPO
Elliott M G	PO Box 480, Oamaru Island Stream Simmentals island-stream@paradise.net.nz <i>Comments: Sired by Windsor Lea AE 150. 400 day growth trait leader. EMA +2.5.</i>	Ph 03-434 8397 Fax 03-434 8371	6 From May	Central South Island Simmental Sale Temuka 17 June	
Ellis P J & H M Puriri Simmentals	Puriri Station, Parapara Rd RD3, Kataia Email: puririsimmentals@xtra.co.nz <i>Comments: 25 bulls from a herd run on a commercial basis. Sound and quiet.</i>	Ph 09-406 0201 Fax 09-406 0201	By arrangement	5 July	
Entwisle M I & N J Hampton Downs	Hampton Downs Rd, RD2, Te Kauwhata Email: malcolme@ihug.co.nz <i>Comments: Hampton Downs specialises in black and red poll. Calving ease, moderate framed, easy fleshing hill country cattle.</i>	Ph 07-826 3194 Fax 07-826 3194	Yes Available now	Waikato Club Sale 12 July	2
Forsyth J M	Mangaowata Rd, RD 26 Stratford	06-762 5524			
Foster D	106 Kimihia Rd, Huntly	07-828 8810			
Garland P Falcon Hill Simmentals	758 Glenroy Rd RD3, Gisborne	06-862 2606			1
Gifford R & C	Marlow Rd, Riponui, RD1 Kamo, Northland	09-433 7051			
Glass Derek & Fiona Mamaku Simmentals	406 Aria Road, Piopio <i>Comments: 160 cow polled commercial herd. Yearlings, autumn born and 2 yr bulls for sale.</i>	Ph 07-877 8067 Fax 07-877 8306	Yes From June		
Glen Devon Simmentals Kirk Rob	RD 4, Palmerston North Email: rob.adele@inspire.net.nz	06- 325 8432 0274-474 626	Yes From 25 May		
Glover B A High Valley	High Valley, Miranda Rd Mangatangi, RD1, Pokeno <i>Comments: Bulls from a wide selection of bloodlines for calving ease. Very quiet, early maturing, moderate frame.</i>	09-232 7842	By arrangement —— 30 bulls for sale ——	June	1
Graham C A & J D	Waingaro, Parnassus, RD North Canterbury <i>Comments: Canterbury's largest and longest producer of Simmental. Bulls farmed under commercial conditions on hill country.</i>	03-319 2839			
Gray G B & P A	Milnerloo Simmentals 7 Staion Rd, RD2, Whakatane	Ph 07-308 8566 Fax 07-308 7566		Waikato Club Sale 12 July	
Hall A T & A A	Horoeka, RD4, Dannevirke	06-374 3686			
Hall J C	Pendeen Simmentals, Hororata RD2, Darfield	03-318 0873			
Hammond J D & H D	Raetihi Rd, RD1, Ohakune John_Helen@xtra.co.nz <i>Comments: Well grown sound bulls with excellent muscle development and temperament.</i>	Ph 06-385 8040 Fax 06-385 8040		4 June Waimarino	
Hawkins S	Wentwood Grange, RD4 Cambridge	07-827 6174			
Hill P R, P J & J A Lynbrae Simmentals	PO Box 112, Whangarei peterhill@clear.net.nz	09-437 5948	7 Available now		
Houlbrooke J & G	Tokaweka Simmentals, South Rd RD2, Waipu	09-432 0105			
Hurst J B	Thanet Farm Co Ltd, RD9 Waimate, South Canterbury	03-689 2652			
Hutching C Brooklands Simmentals	Brooklands, RD7, Dannevirke	Colin 06-374 1802 Nigel 06-374 5181	Open Day 5 May, 10 am		

comprehensive breeders index

NAME	ADDRESS/ EMAIL	CONTACT PHONE/FAX	Paddock SALES	AUCTION SALE	BEEF EXPO
Midgley A R Willowbrook Simmentals	Willowbrook Simmentals, RD2 Timaru	03-612 6671 03-612 6651		Temuka 17 June	1
Murphy D L	Dunshaughlin Farm, RD2 Waipukurau <i>Comments: 140 cows raised in natural conditions/strict culling.</i>	Ph 06-858 9869 Fax 06-858 9860			
Muth R & J	26A Buchanan Rd, Karaka RD1, Papakura	09-292 7130			
Nankervis K J	Mountain Rd, RD3 New Plymouth	06-752 0850			1
Neal Andrew & Tracy	Potawa Simmentals potawa@ihug.co.nz <i>Comments: New stud, commercially farmed QA bulls on Piopio hill country. 3 year guarantee on sale bulls.</i>	Ph/Fax 07-877 8009		Te Kuiti 5 June	
Partridge A A T Ladburn Simmentals	Sedgemere, RD3, Leeston Christchurch <i>Comments: Stud and commercial bulls bred in 'Crusader Country' with genetics to make winning progeny.</i>	Ph 03 324 2733 Fax 03-324 2733	15 Available now		3
Paterson H D	Ida Valley Station, RD2 Oturehua, Otago	03-447 4794		Omakau 24 May	
Patterson C J	22 Spring Place, Leeston	03-324 3706			
Perry B & R	25 Park Road, RD2, Whakatane	07-323 6468			
Prenter G & D	Glengarry, RD8, Dannevirke <i>Comments: These red bulls are 20kgs above breed average for growth and only .5kg above average for birth.</i>	Ph 06-374 5724 Fax 06-374 5729	6 Available now		1
John Pullen Family Trust	21 Hadfield Street, Patea South Taranaki	06-273 8448			
Rissington Breedline	RD4, Napier info@rissington.com <i>Comments: Herd selected over 30 years for easy birth, high growth and excellent temperament, making for predictable performance.</i>	Ph 06-839 5836 Fax 06-839 5859		On-farm auctions 16 June: 30 2-yr-olds 16 October: 30 1-yr-olds	
Ritchie A W	140 Neal Rd, RD3, Blenheim	(03) 570 2293			
Roberts M & T	615 Wardley Rd, RD9, Inglewood	Ph/Fax 06 756 6354			
Robins J A & M J	Tudor Park, Ryal Bush, RD6 Invercargill tudorparksouth@hotmail.com	03-221 7150	Yes	6	
Robinson Q L & T A LeeAnne Simmentals	Pikiwahine Rd, RD1, Waitotira Northland leeannesimmentals@clear.net.nz <i>Comments: Wide genetic base. Emphasis on calving ease, high growth rate and heavy muscling.</i>	Ph 09-437 0235 Fax 09-437 0735	Yes Anytime		
Sceats R R	Old Kaipara Rd, RD1, Warkworth	09-422 4916			
Scott J B Puketawa Simmentals	Puketawa, Roberts Rd, RD2, Cambridge	Ph 07-827 2864 Fax 07-827 2977		14 June 1 pm	2
Scott P A & A M Te Raumaaukau	Te Raumaaukau Rd, RD3 Otorohanga <i>Comments: Heavily culled, service tested, TB accredited, scanned EMA and good temperament.</i>	Ph 07-873 8413 Fax 07-873 8413		10 June, 1pm Te Kuiti Saleyards	
Sixtus K B & W A S'State Simmentals	Rosedale Rd, RD2, Upper Moutere Nelson <i>Comments: Good honest bulls bred under natural conditions.</i>	03-543 2120			1 20 May
Sloane Lynne	RD1, Whangarei, Northland	09-432 2823	9 Available now	9 25 June	2

comprehensive breeders index

NAME	ADDRESS/ EMAIL	CONTACT PHONE/FAX	Paddock SALES	AUCTION SALE	BEEF EXPO
Jackson John	Box 35, Kaitoke, Upper Hutt	04-526 8997			
Jackson Kathleen	266 Marchant Rd, Kaitoke Upper Hutt	04-526 8997			
Kemp G B	Pouriwai, Private Bag 7618 Gisborne	06-867 0867		12:30 pm, 20 May Matawhero Saleyards	
Keown D R	"Lone Pine", Raes Junction RD, Dunedin	Ph 03 446 8445 Fax 03-446 8485		Raes Junction 28 May	
Landcorp Farming	C/- G.B. Nicholl, PO Box 44 Rotorua	07-348 3100			
Levels Farming Co Ltd	Roslyn, PO Box 6, Roxburgh	03-446 8785 03-446 8765			
Longville J A & D J Rivendell Farm	JV Grant Rd, RD3, Wellsford longville@xtra.co.nz	09-423 8506			
Lott W J	Sunnyvale Simmentals, Box 18 Garston	03-248 8813			
Lunt D J	122 Taplin Rd, RD3, Hamilton	07-829 5474			
Mackey Jim & Liz Cariboo Simmentals	21 Peach Orchard Road RD4, Hikurangi, Northland jimmack@xtra.co.nz <i>Comments: For high quality and genetics at low prices, "Come North"!</i>	09-433 9718	Yes	23 June	
Manning W L & M E	Waitaua Simmentals, PO Box 8102 Whangarei	09-435 3071			
Mansell B & M R	Kapiti Simmentals, PO Box 99 Paraparaumu	04-298 8274			3
Marais D & J Nuwendland Simmentals	Inlet Road, PO Box 537 Kerikeri, Bay of Islands nuwendland@xtra.co.nz	Ph 09-407 9039 Fax 09-407 9013	Yes Available now		
Martin R R Trust Enterprise Cattle Company c/o Craig & Richard Martin	C/- C Martin, Rosedale Rd Upper Moutere, Nelson <i>Comments: NZ's largest on-farm multibreed purebred auction sale offering 50 fully warranted 2 year Simmental, Angus and Hereford bulls.</i>	Ph 03-543 2292 Fax 03-543 2292	Yearlings available Sept	Sat 19 June 1pm	4
Matheson D & J	RD1, Lyttleton	03-329 9897			
McDermott T	RD2, Dargaville	09-439 4022			
McIntyre H D	Brocade Simmentals, RD1 Apiti, Feilding <i>Comments: From a 100 cow herd. Brocade bulls are renown for hardiness and muscling.</i>	Ph 06-328 4845 Fax 06-328 4846			
McCorkindale Garry & Julene	Glenside Simmentals Waitahuna, RD3, Lawrence, Otago glenside@xtra.co.nz <i>Comments: 120 cows run with strong commercial focus. Fully Breedplan recorded. Sale bulls guaranteed and delivered free in South Island.</i>	Ph 03-485 9727 Fax 03-485 9729 Mob 027-242 6735		On-farm auction 2pm Thurs 27 May 25 bulls	
McLay L K & G J	Westview Farms, Otekura, RD1 Balclutha	03-415 8190			
McNaughten J & L & D & L Karewa Simmentals	98 Rakaiatai Road RD7, Dannevirke	06-374 1551	3 Available now		2
McWilliam P C & S M Maungaraki Cattle Co	Admiral Rd, Gladstone, Masterton p-s-mcwilliam@xtra.co.nz <i>Comments: All bulls quality assured, semen quality and service tested. Performance recorded. Selection of top quality females for sale.</i>	06-372 7724 06-372 7770	30 Available now		4 bulls 2 preg recipis
Middleton J A	Landscape Farm, RD2, Pokeno	09-233 6060			

comprehensive breeders index

NAME	ADDRESS	CONTACT PHONE/FAX	PADDOCK SALES	AUCTION SALE	BEEF EXPO
Southgate P J & S M	289 Upland Rd, RD2 New Plymouth	06-755 1112			
Stallard B J & J A	210 Pukengahu Rd, RD23 Stratford	06-762 2606			
Stewart Partnership	Pukepuke, Marshmeadow Rd RD4, Hamilton	07-824 1735	Yes Available now	Waikato & Districts 12 July	
Strathern I A & M O	88 Bellevue Road, RD4, Hamilton	Ph 07-829 5756 Fax 07-829 5759	4 Available now	Waikato & Districts 12 July	
Strauss E J & M	Waironga Rd, RD2, Mosgiel strauss@es.co.nz <i>Comments: Even lineup of well muscled, structurally correct sons by Moneymore Crackerjack (Expo 2000 Reserve Champion), Bar 5 Kalgery and Ridgewood Bruno.</i>	03-489 7521		12 2yo bulls On farm 27 May	1
Taylor S J & C T	Rangihau Rd, Coroglen, RD1 Whitianga	07-866 3538			
Thompson Tony & Glennis GlenAnthony Simmentals	RD4, Waipukurau glenanthony@xtra.co.nz <i>Comments: Established in 1972, GlenAnthony is celebrating 30 years of Simmental breeding – still going strong!</i>	06-858 8705 025- 280 6148		On farm 16 June	3
Timperley D G & K J	Haylands Rd, RD4, Rangiora	03-312 8180			
Trossachs Simmentals	Tea Creek Rd, RD1, Carterton	06-379 8395			
Trotter S D & Thaller E Oakdale Simmentals	20 Seccombes Rd, Epsom Auckland <i>Comments: Our Warkworth stud aims to produce early maturing stock, with good temperament, growth and polledness.</i>	09-524 9472	9 (7 yearlings, 2 rising 2-year-olds) Available now		1 19 May
Turton Daryl	607 Cambridge Rd, RD3, Hamilton	07-856 4713			
Vujcich V & S	931 Puketona Rd, RD3, Kerikeri	09-407 7664 09-407 7384			
Waiwhare Simmental	425 Glenross Rd, RD9, Hastings waiwharesimmental@xtra.co.nz <i>Comments: Once again we are delighted with our sale bulls which are showing soundness, performance and strong carcass qualities.</i>	Ph 06-874 2889 Fax 06-874 2881	15 After 19 May		5
Wakeman J P & W K	RD1, Kaiapoi	03-327 8841			1
Willow Bay Co Ltd	C/- David Green, Kawera Rd, RD6 Taihape				
Wilson B M & S F	PO Box 64, Hawera	06-278 7529			
Woolston W J & H A Misty Moor Simmentals	Patoto Rd, Mokauiti, RD3 Te Kuiti <i>Comments: Stud sire Gideon is a double shooter, large feminine females and large well muscled bulls, conformation supreme.</i>	Ph 07-8776817 Fax 07-877 6817			
Wooster P & Connolly M	PO Box 55, Otorohanga	Ph 07-873 8887 Fax 07-873 7388			
Wylie Susan	Ashley Clinton RD, RD1, Takapau	06-855 6590			

Farewell to Christchurch Dinner

A formal dinner was held at Latimer Lodge on November 13th 2003, to give all members the opportunity to say goodbye to 30 yrs of Simmental N.Z. in Christchurch.

63 members, ex members and employees attended including 5 of the 7 Life Members, and a number of ex Councillors.

Don Graham spoke about the establishment of the breed in New Zealand, and the importation of the first animals. He was the first New Zealander to be given a conducted tour through Bavaria inspecting Fleckvieh Simmental cattle. This was in 1970 and on behalf of clients Dick Kerr, David Baker, Derick Orbell and Rodney Cox, he purchased the first Simmentals for New Zealand. These animals, Kersknowe Atom and Alice, eventually arrived in 1972. Don went on to remember the first Simmental Sale in Australasia, held at Rodney Cox's property at "The Levels", where Alice's heifer calf fetched \$47,500.

Ian Johnson spoke about the early years of administration when members were coming and going every week and money was flowing like wine. Ian remembered the early days in a very small office at the airport. No computers and everything recorded manually.

Rodney Cox spoke about his years on Council during those halcyon days. He paid tribute to the Society's first President Dick Kerr, who managed to get all the early work done on a voluntary basis, as there were no funds. Rodney stressed the importance of the example set in those early days, when everybody helped each other, creating a great atmosphere, which reflected through to all the breeders. Jim Houlbrooke gave an extremely informative account of his trips around the Simmentals of the World, and his impressions of some of the cattle he has seen over the years.

The formal part of the evening concluded with President Craig Martin giving a very brief account of the move to P.B.B., and his expectations for the future of Simmental N.Z.

— HELEN ELLIS





BEEF EXPO
MAY 2004

CENTRAL
SOUTH ISLAND
SIMMENTAL BULL SALE
JUNE 17th 2004

willowbrook simmentals

QA. Willowbrook Simmentals, visitors always welcome. Quality stud and commercial Bulls and Heifers available.
Alastair and Jessica Midgley, RD2 Timaru, Ph: 03 612 6671, Fax: 03 612 6651, Email: midgley-willowbrook@xtra.co.nz.

Our kind...



Prospect Colloseum



Willowbrook Hugh



Moneymore Collosus



Rockvale Apollo



Prospect Jupiter



Moneymore James Bond



Wai-iti High Riser



Tokaweka Dramatic



Pouriwai Hamish



Moneymore Leon



Moneymore Lonestar



Wai-iti Loch Lomond



Levels Hans



Moneymore Right Time



Moneymore Earthquake

...the right kind



ROSS AND GRANT COCKBURN
Mt Prospect, RD2, Te Anau, Southland
Ph 03 249 7082
Fax 03 249 7085 Cell 027 277 9586
Email Prospect@fiordland.net.nz



Enterprise Cattle Co.

CRAIG AND RICHARD MARTIN
Clifford Road, Wakefield, Nelson
Ph 03 543 2292
Fax 03 541 8529 Cell 027 220 1286
Email randcmartin@paradise.net.nz

SALE DATE: Tuesday 25 May 2004, 1pm
Castlerock Sale Yards
25 Simmental Bulls

SALE DATE: Saturday 19 June 2004, 1pm
On the property
25 Angus Bulls 20 Simmental Bulls
5 Hereford Bulls

ALSO AT BEEF EXPO 2004