

# Simmentales

Issue 2

August 2004

## A Thrilling Win AT BEEF EXPO 2004

**When Simmental bull Moneymore Middle Earth won the Champion of Champions title** at the 2004 Beef Expo for the Enterprise Cattle Company, of Wakefield, Nelson, stud principals Craig and Richard Martin and George Shuttleworth were thrilled.

Not only did they take out the prestigious trophy and \$1,500 cash, it was the second time in 10 years that they had won the award. In 1994 the Enterprise Cattle Co. won the Beef Expo Champion of Champions with another earthy bull, Moneymore Earthquake.

Earthquake, sold to the Rockvale Stud of Peter Cowley, Taranaki for \$36,000, the Australasian Simmental record price, a record that still stands

"This year's win had a more realistic feel to it, and there has been huge media attention, with a European breed winning twice for the same breeders."

"Our bull this year, Middle Earth, was big enough, long enough and has heaps of meat and carcase, and he's also a pretty efficient bull with a great spread of numbers," says Craig. Middle Earth sold for \$11,000 to Gary Boyle of Evertree Simmentals, Hawke's Bay.



### CONTENTS

- |                        |                            |
|------------------------|----------------------------|
| 2 – President's Report | 8 – Beef Expo Results      |
| 3 – Council Report     | 10 – Regional Sale Results |
| 4 – Simmental Briefs   | 11 – Waikato Achievers     |
| 5 – 1 Million Internet | 12 – MWI EBV Report        |
| Enquiries Per Month    | 13 – Easter Royal Show     |
| 6 – Bull Test Station  | 14 – Rural Connectivity    |

Copy deadline for next newsletter: 12 November 2004

# THE *President's Report*

## ***Dear Simmental Members,***

We welcome you to this winter newsletter. The bulk of us have experienced a long cold and unusually wet winter and thankfully spring is just around the corner. By now most of you will either be calving or fast approaching calving. Council wishes you well and encourages all of you to observe Birth weight, Earlier you received a technical note re calving ease, please take the time to record calving ease scores. The reporting of Calving Ease scores adds huge value to what has been a poorly observed EBV.

By now most of the bull sales are over and I guess at best the results, whilst not startling, were satisfactory. Bull sale results are of huge concern to Council as ultimately this is our barometer of where the breed is at. Whilst there exists plenty of room for improvement we should all be pleased with Expo. We had a strong clearance, prices softened a bit but we enjoyed increased commercial support especially for the Test Station bulls. Council has elected to retain the format and content of the catalogue for 2005. We are of the view that the event is a genetic exposition rather than a national two-year old bull sale and will promote the event accordingly.

It was with regret and sadness at our recent council meeting we received and accepted Grant Latimer's resignation from Council for personal reasons. Grant's tenure on Council was sadly too brief but in a short period of time he made a huge contribution to us. Grant brought his larger than life approach to us and there was never a dull moment around the Council table. His skills and commitment to promotion and innovative ideas of communication will be sorely missed. Grant's understanding of the power of the Internet has provided us with a clear path for the future. To Grant, we wish you well for the future and are sure your enthusiasm for all things Simmental will not be lost. He will not be completely lost to Council as he has undertaken to assist us with our Smartmail and ongoing relationship with Ancare.

I would like to take this opportunity to welcome Ray Crosby to Council. Ray's direct area of responsibility is with finance and he will have a full role in all aspects of Council. In line with Council's policy of more member involvement we welcome John Hammond to the Show & Sales Committee. Over the years



John has been a loyal supporter of Expo and we look forward to his valuable contribution to this committee.

Council made the decision not to seek election to fill the vacancy as a result of Grant's resignation instead opting to wait until the end of year Council elections. I ask you all if you feel you can contribute to Council to consider putting your name forward for the next election.

We have altered the committee structure slightly to best reflect the direction of this council. The two most notable are Promotion makes way for Marketing and a split in the role of Communication and Member Liaison. It is our aim to move from shorter term fixed media promotional activities to develop a medium-longer term perception based marketing programme focussing on the strengths of Simmental. This is not going to be easy and it will not evolve over night but we must commit to a programme of this nature.

The split in Communication and Member Liaison is to clearly separate the role of what, where and how we distribute information and clearly dealing with the needs of our members, particularly new members.

The committee structure is designed for your benefit and accordingly we encourage you to use it with ideas, comment and suggestion.

The bulls at the Test Station continue to do well and we hope to have an open day combined with a workshop in November.

The restructure of PBB continues to proceed well and I am sure come the PBB November AGM we will be able to release the business plan and new board structure. It is Simmental's intention to play a full and active role in the direction and management of the PBB.

The cut off for the second Group Run is fast approaching and we encourage you all to make use of it. It is timed to be of particular benefit for updating EBVs for yearling selection and confirmation for EBVs for young females.

In closing I would like to congratulate Alastair Midgley on his election as Vice President. As a long serving senior member of

Council we look forward to his continued input and wise guidance.

On behalf of all our membership I would like to extend a warm welcome to our new members and wish them well in their endeavours producing Simmental cattle.

On behalf of our council we thank you for your continued support and are sure you will not hesitate in contacting any of us regarding any issues you may have.

*Craig Martin*  
**PRESIDENT**



## Council Report

### COUNCIL MEMBER CHANGES

**Resignation:** Grant Latimer resigned from council. Council thanked him for his contribution to SimmentalNZ and decided not to replace him at this stage.

**Vice President:** Alastair Midgley was elected as Vice President. Council congratulates Alastair on his appointment.

**New Member:** Ray Crosby was co-opted to council. Council welcomes Ray to the executive and looks forward to working with him.

**Retired:** Peter Mc William attended his last Full council meeting and was presented with Simmental Cow and calf to go with the Bull presented to him at the May AGM. SimmentalNZ thanked him for his tremendous contribution to the breed. Peter was co-opted to the Asset management committee. (Council and committee member details are listed on the enclosed card)

### PBB CREDIT POLICY:

Council adopted the PBB credit policy for overdue accounts.  
60 days – overdue reminder;  
90 days – request payment within 30 days. Advise if not paid, "stop work" on all services  
120 days – letter; if no payment within 30 days, account goes to debt collection.

### QA STRUCTURAL ASSESSMENT

After slight alterations, the amended assessment sheet, will be sent out. Members to score their animals and send data to the office. Possibility of the data being displayed on Internet solutions.

### PRELIST FEES

\$20.00+gst will be levied, for females 2 years and over, as per Registry's records of members herd details.

### BEEF EXPO DEBRIEF

Wide ranging; included the issues of animal numbering, the speaker system, Breed display profile, stewards and timing and order of sale. A vendors meeting is a priority.

Peter McWilliam volunteered his services as ring Steward next year.

### CERTIFICATES

In response to the request of members, Certificates will be produced for the members who want them. Please inform the office if that is your wish. Most of you are happy to download the page off Internet Solutions (IS). This will become easier, including batch printing of updated, 'virtual certificates' with the new report button we have requested from ABRI.

### SATURDAY MORNING SPECIAL VISITS

After a late Friday meeting, Council visited the Test Station Bulls early Saturday morning, then met the Meat New Zealand Roadshow Speakers at the PBB office.

Steve Skinner stressed the need to scan animals in good condition, Wayne Upton explained docility scoring. It must be done at or before weaning. Andrew Byrne showed us the 'member-logout' version of Internet solutions. An enlightening discussion over coffee followed.

# Simmental Briefs

## Data return problems

Some members submit their data in a tidy and easy-to-process form, some people submit data incomplete and in a form which makes it very difficult for the people in registry to enter the data. The possibility of charging according to how easy the data is to process on a time taken basis was discussed by council.

**The Toyota Prado** was returned as the dealership passed to new owners. We are negotiating a new deal with Toyota New Zealand.

## Trans Tasman Simmental Committee (TTSC)

Australia welcomed our initiative to form such a group and we are working towards a meeting at the Melbourne show 18/19 Sept 04. The focus will be strengthening liaison activity between the two countries and especially in the areas of marketing, technical and administration.

As Peter Spiers, the Australian Breed Officer said "...we can achieve more by working together." They have also adopted a Beef Class System with voluntary participation. It will fit closely with our structural assessment system.

## NZ Tour

A party of thirty Australian Simmental breeders want to visit NZ in May 2005, taking in BEEF EXPO. We are helping with arrangements. It will include a second meeting of the TTSC.

**2006 World Simmental Congress** will be held in Calgary, Canada in July of 2006.

**July 5-11** – Pre Congress Tour in Ontario, Manitoba and Saskatchewan

**July 12-16** – Congress in Calgary (during the world famous Calgary Stampede)

**July 17-23** – Post Congress Tour in Alberta

Participants can join 1, 2 or all 3 parts if they choose. Start saving now and plan your matings to allow you to join the tour.

## Waikato Tour

A tour of the Waikato is in planning stages for March 2005. We will keep you informed.

## SHOW AND SALES:

**Royal Show** – Invercargill – 9-11 December 2004. Simon Cox has accepted the position of judge.

**Warkworth Show** – 15 January 2005. John Scott Nominated as Senior Judge



## Levels Trophy

The Levels trophy was named for the Levels Stud, a foundation breeder of Simmental Cattle in New Zealand and donated by the Cox family. The Levels Trophy, a fine wooden carving of a cow, is awarded for the 'Greatest Contribution to Promotion of the Simmental Breed' each year.

This year the trophy was awarded to Alastair Milne of Ailsa Simmentals in recognition of his efforts in overseeing the Simmental Bull Test Station during the past 2 years.

---

## The Year Letter for 2004, is P.

---

## DNA

The results of Chris Morris's preliminary work will be available soon for council committee to assess. Errol visited the Ruakura lab and met with Dr Morris after attending the Waikato sale, in early July.

## Welcome to New Members

**Daniel Clayton**, Glenburn, Waipukurau

Phone: (06) 858 9954

Prefix: GLENBURN Herd No. **1673**

**Arthur & Sonya Perkin**, Artson Farming Ltd, Karamea

Phone: (03) 782 6683

Prefix: DRY CREEK Herd No. **1674**

**Fraser Manning**, Dinsdale, Hamilton

Phone: (07) 829 8779

Prefix: NEW STUD Herd No. **1675**

**Colin Diamond**, Dargaville

Phone: (09) 431 5775

Prefix: CAVALIER Herd No. **1676**

**Ian & Robyn Marshall**, Waitara

Phone: (06) 754 6761

Prefix: BUSHY PARK Herd No. **1677**

# 1 MILLION ENQUIRIES PER MONTH

***An Internet-based information service developed by the Agricultural Business Research Institute (ABRI)*** has exceeded 1 million enquiries per month for the first time in March this year. This is an exciting milestone said ABRI's Managing Director, Arthur Rickards,

The "Internet Solutions" service is used by livestock breeders world-wide and provides information on the breeding and performance of beef cattle, dairy cattle, horses, sheep, boer goats, angora goats, alpacas and elk.

The software team at ABRI that developed Internet Solutions included Murray Scholz, Jay Stone, Liz Roan and Christopher de Crespigny. They have done an outstanding job in producing such a user-friendly information system.

The 1 Million enquiries per month milestone, reinforces ABRI's position as a world leader in provision of advanced services to the livestock industries.

**BELOW FROM LEFT:** Andrew Byrne, Murray Scholz, Russell Priest, Arthur Rickard, Steve Skinner, Errol Harvey at ABRI headquarters, Armidale in March this year.



## *Our Sincere Thanks:*

We would like to express our sincere thanks to all the breeders who kindly contributed to the "NZPBB Flood Relief Fund". Your generosity and support has been overwhelming. We feel fortunate to be associated with such a caring group of people.

**Thank you, Linda Rule and Linda Shailer**





# Boarding School for Boys

## ***The New Year for Simmental NZ's Board School for Boys has begun.***

Welcome, Haere Mai, Bula, Bienueue, Willkommen, Buongiorno, Buenos Dias, to all parents and a special welcome, haeremai, etc, etc to all new parents. We hope the school lives up to your expectations and more importantly the boys profit from their experience.

We had the usual hiccups getting the boys enrolled and the School Board of Trustees have to take responsibility for this as they were the worst offenders.

### **Breast-feeding**

Recently there was publicity about a mother who was breast-feeding her three-year-old at Playgroup. Junior just strolled up

to Mum whipped up her jersey and into it!!! We had a similar case. The boy duly arrived at school straight off Mum. I went to check on the boy and as there was no obvious mound, junior decided the nearest appendage will do!!! The School is putting an OSH policy in place. The parent concerned will remain nameless, however the boy is a lovely fellow and we are chuffed that he turned down their local Nelson Boys to enrol at our School.

Discipline and punctuality are very important at the school. Fortunately we intercepted the bus from Kaitaia which was on its way to Foxton Beach with the blessing of the parent. The other case was from Te Anau – he missed the first bus and arrived a week late!!





SIMMENTAL COUNCIL: Ross Cockburn, Ray Crosby, Craig Martin, Helen Ellis, Alastair Midgley and Peter McWilliam (Absent: Warren Burgess)

However all 35 are here now and I would say without doubt they are the most exciting line up of new entrants we have had. They certainly are a multicultural lot with colours ranging from the pale European to Negro.

#### **Orientation day**

Orientation day was on the 29th May. The boys had their usual health vaccinations; BVD, Covexin (clostridial diseases), penicillin, copper capsules and a quarantine drench. The boys average weight 393 kgs is up on previous years (386 kgs last year).

#### **Visiting Days and Records**

Because of disruption to school life and the unsettling influence

of parental visitation, your School Board has ruled against casual visits unless there are special circumstances. A programme of open days will be held during the school year – you will be duly notified. In the meantime monthly reports will be sent out giving "Johnny's" progress.

In the meantime if you make any constructive suggestions as to how we can improve the school, don't hesitate to give your Board Member or myself a call.

ALASTAIR MILNE – CARETAKER

Phone (06) 322 9883

Inspecting the new bulls at the test station, after the July Council meeting.





# Beef Expo

## SIMMENTAL SHOW RESULTS 2004

SUPREME CHAMPION & CHAMPION OF CHAMPIONS.....	Moneymore Middle-Earth AM10
RESERVE CHAMPION .....	Lynmar Magic AM207
CHAMPION LED BULL .....	Moneymore Middle-Earth AM10
RESERVE CHAMPION LED BULL .....	Waiwhare Major AM211
CHAMPION UNLED BULL .....	Waiwhare Marshall AM189
RESERVE CHAMPION UNLED BULL .....	Karewa Morocco AM6 (ET)
HIGHEST PRICED SIRE Sired BY A HOMEBRED SIRE .....	Moneymore Middle-Earth AM10
MOST SUCCESSFUL EXHIBITOR .....	Waiwhare Simmentals
HIGHEST WEIGHT GAIN BY BULL TEST BULL .....	Willowbrook Marlin AM40
HIGHEST PRICED LOT OF SALE .....	Moneymore Middle-Earth AM10
HERDSPERSON .....	Kathrine Rawnsly





# BEEF EXPO SALE RESULTS 2004

Led 2YO Bulls

LOT	ANIMAL	VENDOR	PURCHASER	PRICE
1	WAIWHARE MAJOR AM211	J M Gould (Brancott Farm) Trust	Waipoapoa Station	7,000
2	WAIWHARE MARCUS AM196	J M Gould (Brancott Farm) Trust	Pyne Guild Guinness	7,500
3	CORNWALL PARK MR KEMP AM8	Cornwall Park Simmentals	Waipoapoa Station	4,700
4	WAI-ITI MR UNIVERSE AM67	P C & S M McWilliam	Central Livestock Ltd	6,000
5	WAI-ITI MACHO MAN E.T. AM20 (ET)	P C & S M McWilliam	Riversdale Partnership	4,000
6	KAREWA MAESTRO AM7 (ET)	J & L / D & L McNaughten	H R Stewart	6,000
7	HAMPTON DOWNS MACKINTOSH AM61	Malcolm & Ngaire Entwisle	H D & R A Bell Partnership	4,000
8	MONEYMORE MIDDLEEARTH AM10	Enterprise Cattle	Evertree	11,000
9	LADBURN MAGELLAN AM315	Mr A A T Partridge	Rangiora Farming Trust	7,500
10	LEAFLAND MADIBA AM4 (ET)	Strauss Family	Est. T R & W T Burgess	10,000
11	TAPUATA MAIN AM72	G & D Prenter	Lochiel Cameron Trust	3,700
12	FALCON HILL AM8	Mr Peter Garland	A J Hassall	6,000
13	WAIWHARE MONARCH AM174	J M Gould (Brancott Farm) Trust	Rissington Breedline	7,000
14	WAI-ITI MEXICO AM31	P C & S M McWilliam	--- Withdrawn ---	---
15	WAIWHARE MARIUS AM202	J M Gould (Brancott Farm) Trust	Lakeview Farm	6,000
16	CORNWALL PARK MARKOS AM15	Cornwall Park Simmentals	Glenbrae Partnership	5,000
17	LYNMAR MAGIC AM207	K J & L M Nankervis	Glendevon Partnership	8,000
18	CORNWALL PARK MR G AM12	Cornwall Park Simmentals	Tangiwai Holdings	3,700
19	RUAVIEW AUDI AM11	J D & H D Hammond	--- Passed in ---	---
20	TERRILYNNE MAC	Mrs H L Sloane	Central Livestock Ltd	6,400
21	CORNWALL PARK MADIGAN AM21	Cornwall Park Simmentals	Simon Cox, Wrightson	4,700
22	HIGH VALLEY AM3	Mrs B A Glover	--- Passed in ---	---
23	HAMPTON DOWNS MODEM AM108	Malcolm & Ngaire Entwisle	J S & B Powell	4,200
24	WAI-ITI MILKYBAR-KID AM53	P C & S M McWilliam	--- Withdrawn ---	---
25	WILLOWBROOK MARLIN AM40	Willowbrook Simmentals	N R & E A E Pirie	5,700
26	TERRILYNNE MORK AM119	Mrs H L Sloane	A E Morrison Trust	6,000
27	MONEYMORE MOUTERE AM21	Enterprise Cattle	Riversdale Partnership	3,500
28	PROSPECT MAXIUM AM36	G R Cockburn	H D & R A Bell Partnership	4,500
29	AILSA G.R. MAJOR AM2114	Ailsa Farm Ltd	Tangiwai Holdings	9,000
30	KAREWA MOROCCO AM6 (ET)	J & L / D & L McNaughten	N A & E A E Pirie	4,000
31	OKAIR MAXIMUS AM1	J P & M B Wakeman	George McKay	3,900
32	WAIWHARE MARSHAL AN189	J M Gould (Brancott Farm) Trust	H R Stewart	6,000
33	MONEYMORE NAVIGATOR AN2	Enterprise Cattle	H R Stewart	5,700
34	MONEYMORE NINJA AN5	Enterprise Cattle	--- Withdrawn ---	---
35	KAPITI NEBRASKA AN14	B & M R Mansell	--- Passed in ---	---
36	GLEN ANTHONY MATINA AM6	Mr A H Thompson	V F Sears	3,000
37	LADBURN MERRIVALE AM304	Mr A A T Partridge	Mike Wood	2,100
38	GLEN ANTHONY MOSELLE AM30 (ET)	Mr A H Thompson	--- Withdrawn ---	---
39	PINELEE MARETTA AM7	G M & L E Bain	Kimihia Farms	2,400
40	GLEN ANTHONY NGAIRE AN87 (ET)	Mr A H Thompson	Cornwall Park Trustees	4,000

UnLed 2YO Bulls

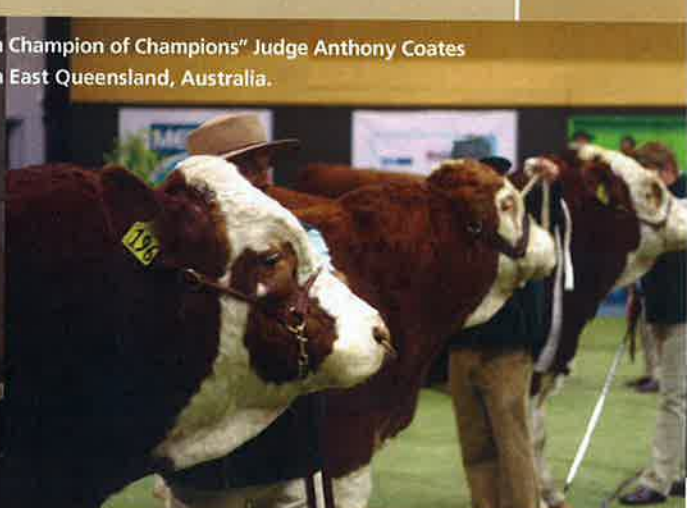
Females

Bull Test Station Bulls

Yearling Bulls



"Wrightson Champion of Champions" Judge Anthony Coates from South East Queensland, Australia.



# EBV Accuracies & Bull Testing Stations



Russell Priest – Meat & Wool Innovation Beef Genetics Coordinator

Ph. 06 323 4484 / Fax. 06 323 3878 / Mb. 0274 369 372 / Email. russell.priest@mw.co.nz

Generating EBVs relies upon head-to-head comparisons of animals within management groups (groups of animals treated the same). The greater are the number of these comparisons (the larger the management group) and the more diverse the genetics within the group, the more accurate will be the EBVs. Maintaining strong pedigree linkages between groups is also an essential part of sound performance recording.

One of the worst possible scenarios in generating quality EBVs occurs when one animal is taken permanently from its management group at an early age (before much performance information is recorded). The head-to-head performance comparisons with animals within the management group, from which the animal came, will no longer be able to be made. This means that any further information collected on the animal will not contribute to its EBVs or those of any of its relatives. Any EBVs generated on the animal after it leaves its management group will be based only on ancestral data and related traits e.g. the relationship between the growth traits.

It is advisable therefore, in creating management groups, to have a minimum of two animals in a group and they should have as diverse pedigrees as possible i.e. ideally they should have different sires and dams. Remember also that:

- > Twins are not grouped with singles (a twin and a single calf will not be in the same group even if they come from the same herd).
- > ET calves are not grouped with natural born calves.
- > If there is an age difference between the calves of greater than 45 or 60 days (depends on the trait being analysed) they will be grouped separately.

In a two-animal group accuracies will still suffer because of the size of the group, however at least more meaningful EBVs will be produced. Having different pedigrees ensures that animals' EBVs will contribute to those of their ancestors. EBVs from animals within a management group in which only one sire is represented will not contribute to their sire's EBVs. The above information applies to the situation where animals are taken from a number of different herds and are farmed in a common environment, such as in a bull-testing station. Not only is raw information taken on animals in the test of little value as a

means of comparing the performance of the animals, but the accuracy of the animals' EBVs are also affected. This is because the effects, on subsequent performance, of the different environments from which the animals have come, remain with them for some considerable time, thereby rendering any fair comparison invalid.

I have completed a simple (not statistically robust) analysis of the last two Meat New Zealand Beef Expo sales in which Simmental bulls from the bull-testing station have been represented and have found that with the growth traits there is only an average 2% decline in accuracy of the EBVs of the bulls. However with the carcass traits there is a 7% decline. This, I would suggest, is primarily because of the very low correlations between the growth and the carcass traits, whereas correlations between the growth traits are relatively high. Results of the analysis should be somewhat tempered however because small numbers of animals are involved and particularly those with carcass EBVs.

While there may be some loss of accuracy on EBVs of bulls that have been in the test station, this will be improved if an animal is used in a registered herd and produces progeny that are genetically evaluated.

## Summary

- > EBV accuracies will be compromised to some extent by entering calves in a bull-testing station.
- > The impact of this can be minimized by entering as large a group of calves as possible.
- > Making sure that animals within a group have different pedigrees will ensure their performance information will contribute to the EBVs of their relatives.
- > A minimum number of two calves (must come from the same management group within their herd of origin) should be entered if raw data, taken on the animals while in the test station, is going to contribute to their future EBVs and those of their relatives.
- > Remember that calves are automatically placed in separate groups in their herd of origin if they are twins or singles, naturally or ET born and have an age difference of greater than 45 or 60 days (depends upon the trait being analysed).
- > Accuracies will improve if a test-station bull is used in a seedstock herd that is genetically evaluated.

# Easter Royal Show



Grant Latimer coaching Duncan Ross on showing cattle.

## It was very pleasing to be able to judge at the Easter Royal Show,

with Simmental entries in all classes except the senior bull. Much gratitude must go to the Glen Anthony Stud of Tony & Glennis Thompson, for their valued and continuing dedication of showing their cattle, and placing the simmental breed in the public eye. The quality of cattle was very good, and made for an interesting days judging in the Interbreed classes, where the Simmental breed was generally to the fore, as the results show.

The number of people they get at the Auckland Easter Royal Show, is quite amazing, and during some of the interbreed classes there would have been about 1,000 people in the marquee. The hospitality given to Helen & myself by the Auckland A & P assn was tremendous.

**John Hammond**

EASTER SHOW SIMMENTAL JUDGE

### SIMMENTAL SECTION

#### Cow 3 years & over

- 1st Glen Anthony Cascade
- 2nd Glen Anthony Farina
- 3rd Cornwall Park Butterfly AJ173

#### 2 Year Heifer

- 1st Glen Anthony Leila

#### Yearling Heifer

- 1st Glen Anthony Miss Kelly
- 2nd Glen Anthony Madonna
- 3rd Cornwall Park Butterfly AN333

#### Heifer Calf

- 1st Glen Anthony Nino II
- 2nd Ratalea Nelly
- 3rd Glen Anthony Nadia

#### Female Champion

- 1st Glen Anthony Cascade
- Reserve: Glen Anthony Leila

#### Yearling Bull

- 1st Cornwall Park Mr Kemp
- 2nd Glen Anthony Morven
- 3rd Glen Anthony Macho Man

#### Bull Calf

- 1st Glen Anthony Newry
- 2nd Ratalea Nougat
- 3rd Cornwall Park Nexo

#### Male Champion

- 1st Cornwall Park Mr Kemp
- Reserve: Glen Anthony Newry

#### Supreme Simmental Exhibit

- Glen Anthony Cascade

### INTERBREED CLASSES

#### Royal Interbreed cow or heifer 2 years & over

- 1st Glen Anthony Leila

#### Royal Interbreed yearling heifer

- 1st Glen Anthony Miss Kelly

#### Royal Interbreed Yearling bull

- 1st Cornwall Park Mr Kemp
- 3rd Glen Anthony Morven
- 4th Glen Anthony Macho man

#### Royal Interbreed Heifer

- 1st Glen Anthony Ninoll
- 4th Glen Anthony Nadia

#### Royal Interbreed Bull Calf

- 2nd Glen Anthony Newry

#### Royal Interbreed 2 year old heifer

- 2nd Glen Anthony Leila

#### Allbreed group of 3

- 2nd Glen Anthony entry

#### Allbreed team of 2

- 2nd Glen Anthony entry

#### Interbreed Senior Female Challenge

- 1st Glen Anthony Cascade

#### Meat & Wool Cup

- 1st Angus-AR & PA Hayward-Oak View Blossom
- 2nd Glen Anthony Cascade



# Rural Connectivity

## **Connectivity in rural areas can be achieved through various mediums and suppliers,**

with the number of online resources available to today's rural customer the need for a high speed, consistent connection is increasing. Most sites require a reasonable speed connection if the user is to experience anything other than a frustrating click and hope situation, and currently the choices are as follows:

With Telecom holding such a strong position in the data/voice industry they may seem the obvious immediate choice offering a broad range of connection types from the standard dial-up 56kbps (if you're lucky) connection to "broadband" connections with speeds ranging from 128kbps to 8Mbit/s. Of course these all come with varying costs and are only available in certain geographical areas (eg. For JetStream Nationwide if within 5km of a DSL-equipped exchange). Associated costs for this include a connection fee and the cost of an ADSL modem (\$150+).

Telecom also offer their Mobile JetStream service available Nationwide but subject to coverage once again, this can be achieved with a mobile phone that supports CDMA 1x, or a CDMA 1x card which plugs in to your laptop/notebook. However, while convenient this service only reaches speeds equivalent to dial-up and at a high cost, 1mb of traffic costs about \$8 on the casual plan for instance.

Vodafone offer a similar mobile service, Vodafone GSM/GPRS. Maximum speeds are lower than Telecom's service and the price marginally higher at 10c per 10kb compared to Telecom's 8c per 10kb. Both service providers have starter plans offering \$5 a month for 1mb (extra traffic above this limit incurs costs of 6c per 10kb with Vodafone and 7c per 10kb with Telecom).

Until the local loop unbundling takes place, which will allow other companies access to the copper network that Telecom currently owns, other telephone companies will have to set up their own wired network at a huge cost or branch into the wireless networks to compete, which is exactly what Woosh (formally Walker Wireless) have done.

Although currently only available in Auckland, offering moderate speeds of up to 500kbit/s at an "affordable" price it is looking like a viable alternative to JetStream. It uses a wireless modem that works in much the same way as a mobile phone. This modem costs about \$199 for home users and the base plan is

\$64.95 per month which gives you unlimited data usage (subject to a reasonable use clause) at around 250kbit/s, again like the mobile plans this is greatly affected by reception, network traffic, weather etc.

Another new alternative to the consumer is Satellite internet services. Currently Sky Television offers a text only service to its Sky Digital subscribers, charged to your home phone account at 18c per minute you can use your current email account (certain email providers supported) or sign up for a SKYmail box for \$2 per month.

Ihug is also in the satellite market with its Ultra Satellite service. Offering speeds up to 1000kbit/s and available nationwide. Monthly plan costs are reasonable (\$34.95 - \$79.95) once you have got past the expense of installation at \$299 for the connection pack and a further \$149 to install the satellite dish and PCI card. On the down side you must also use a working phone line to link back to Ihug's servers, meaning slow upload speeds, not suitable for gamers but at no big sacrifice for general surfing and emailing.

If you happen to live in the Counties region you could benefit from Ihug's wireless services which with a connection fee of \$99.95 (which includes all the equipment - 6 month minimum term applies) and plans from \$44.95 - \$114.95 per month, is a viable alternative. Speeds range from 256kbps to 2000kbps, plans include unlimited national traffic and capped international traffic at 1500mb to 5000mb peak time (2pm to 2am) and 5000mb to 15000mb off peak.

TelstraClear offers consumers in the Wellington, Christchurch and Kapiti Coast regions cable internet in the form of Paradise.net. Fibre optic cables provide fast speeds up to 1000kbit/s and with plans starting at \$59.95 per month for 10GB of international traffic at 256kbit/s it is a worthwhile venture - especially for gamers who will love the low latency times of cable.

## **Where to next?**

Still in the development phase, PLC (power line communications) is an experimental service whereby data is sent over the existing power lines in much the same way as DSL works - higher

frequency signals that are filtered out at the end of the line by a PLC modem. This makes use of an already extensive network of wires already spanning the country and could be a feasible alternative to existing terrestrial services, accessible by anybody with power lines. In trials its speeds range similar to those of JetStream and cable (256kbit/s to 14Mbit/s). Unfortunately that data signal is going to have to compete with a number of obstacles in its path such as fuses, transformers and switches. Whether or not it will be marketable before it is over shadowed by the next stage of Broadband connections expected to have speeds well over what PLC will offer is another question.

### PROBE (Provincial Broadband Extension)

This is a fairly new initiative which aims to "Roll out broadband to all schools and communities that do not have access to broadband communications and secondly to encourage

competition in broadband telecommunications outside the metropolitan centres."

It is "intended to ensure that all schools, in particular provincial schools, will have sufficient bandwidth to meet their needs. The bandwidth will also be available to others in the communities - libraries, farmers, local government, marae, welfare agencies, community services and home users."

As stated earlier connectivity and issues surrounding it are in a constant flux and can change on a daily basis. We will advise of any major change that effects our rural customer base significantly.

David Adamson, QCIT Limited

57 Lyndhurst St, Palmerston North

Mobile: 0274469077 Phone: (06) 3564245

## Valuable Genetic Packages For Sale

**Mrs Lorraine Bain offers the following packages for sale by tender.**

#### Lot 1/ Four A Grade Embryos

By Scottish Herod  
5051372 out of Pinelee  
Ballerina AB23

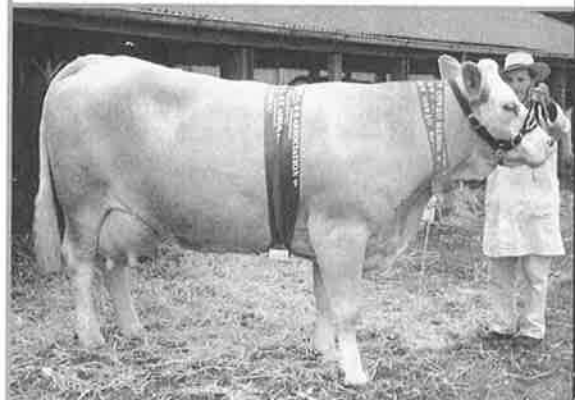
(This represents the  
full sibling genetics of  
Pinelee Lady Di AD14)

Pictured below.

#### Lot 2/ Three A Grade Embryos

By Waikite Landlord  
AD264 out of Pinelee  
Lady Di AD14

(Lady Di, herself a  
show winner is dam of  
Pinelee Hannibal AH2,  
the 2000 Beef Expo  
Champion Simmental)



#### Lot 3/ Semen Package 1

Scottish Herod 5051372  
Coopental Terrific 921/AT2  
BeL C & B Western 4th 1033N  
WRS Super Sport ASA946060  
Heywood Esquire FCB E5  
DEK Diligence 223 N  
Zeugent 49659109  
Bar 5 Calgary 402J  
Klondike Hasalz 49E

#### Lot 5/ Semen Package 3

BBA Galant CSA 38693  
Coopental Terrific 921 /AT2  
BeL C & B Western 4th BEL1033N  
WRS Super Sport ASA946060th  
CSR Bold Fortune 30R  
Eldorado AC27843  
Zeugent 49659109  
Bar 5 Calgary 402J  
Klondike Hasalz 49E

#### Lot 7/ Semen Package 5

Rissingholme Napoleon

#### Lot 4/ Semen Package 2

Scottish Herod 5051372 3  
Coopental Terrific 921/AT2 2  
WRS Super Sport ASA 946060 2  
Great Guns Karl 2  
Bar None Share HolderAW174623 3  
Knight Stinger 207Y AY707 3  
Zeugent 49659109 2  
Bar 5 Vuurslag 420KA00420 2  
Klondike Hasalz 49E 7

#### Lot 6/ Semen Package 4

Tokaweka Rascallion 79/AR29 1  
Coopental Terrific 921/AT2 3  
SBW Mickey Mantle 2  
WRS Super Sport ASA946060 2  
CSR Bold Fortune 30R 2  
Bar None Shareholder AW 17462 2  
Zeugent 49659109 2  
Glen Anthony Yucon 299/AY42 3  
Bar 5 Calgary 402J 2  
Klondike Hasalz 49E 8

469

Please submit your tenders by Monday 20th September 2004 to:

**Mark Stevens, Wrightson Livestock, Private Bag 10002, Feilding**

For EBV and Pedigree information go to Internet Solutions at  
[www.simmental.co.nz](http://www.simmental.co.nz)

**new**

# ECLIPSE

**POUR-ON FOR CATTLE**

## The power of a combination.....in a pour-on

It's a fact. Resistance to endectocide pour-ons is widespread and many cases they simply don't work as well as they used to, despite what it might say on the label. Now there's an answer. New ECLIPSE Pour-On for Cattle - the most potent pour-on ever developed.

By combining abamectin with levamisole new ECLIPSE controls even the most difficult to kill parasites, including *Cooperia* strains resistant to endectocides such as eprinomectin<sup>®</sup> and doramectin<sup>®</sup>. And with two actives ECLIPSE will help keep resistance off your property for a whole lot longer. In fact ECLIPSE works so well that in 6 out of 6 trials it out-performed Eprinex<sup>™</sup> and 5 out of 5 trials out performed Dectomax<sup>®</sup>.

New ECLIPSE, a combination pour-on that eclipses all others, leaving them light years behind.

	ECLIPSE	Eprinex <sup>™</sup>	Dectomax <sup>®</sup>
Combination potency to fight resistance	YES	NO	NO
Controls endectocide resistant <i>Cooperia</i>	YES	NO	NO



**ECLIPSE POUR-ON FOR CATTLE**  
**COMBINATION POWER - POUR-ON CONVENIENCE**

Ancare New Zealand Ltd., 17 Shea Terrace, Takapuna, PO Box 36 240 Northcote, Telephone 09 489 4060 Fax: 09 489 4020  
Website: [www.ancare.co.nz](http://www.ancare.co.nz) Registered pursuant to the ACVM Act 1997 No. A9270. See [www.nzba.govt.nz/acvm/](http://www.nzba.govt.nz/acvm/) for registration conditions.  
<sup>™</sup>Eprinex is a registered trademark of Merial Limited, 27 Knightsbridge, London SW1  
<sup>®</sup>Dectomax is a registered trademark of Pfizer New Zealand Ltd., 14 Normandy Rd, Mt Eden, Auckland

**Ancare**  
The Sign of Good Animal Care



**SUPPORT OUR MAJOR SPONSOR: Send your Ancare Vouchers into Simmental NZ**