

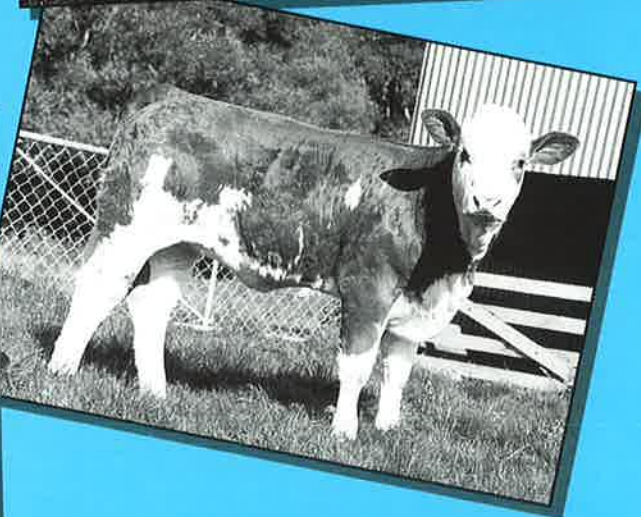
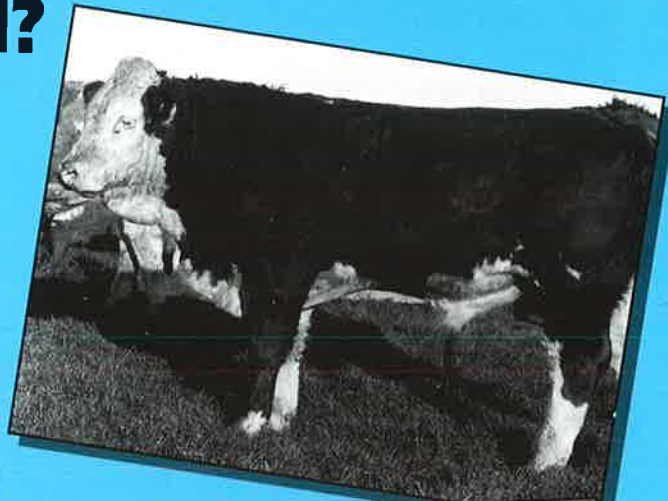
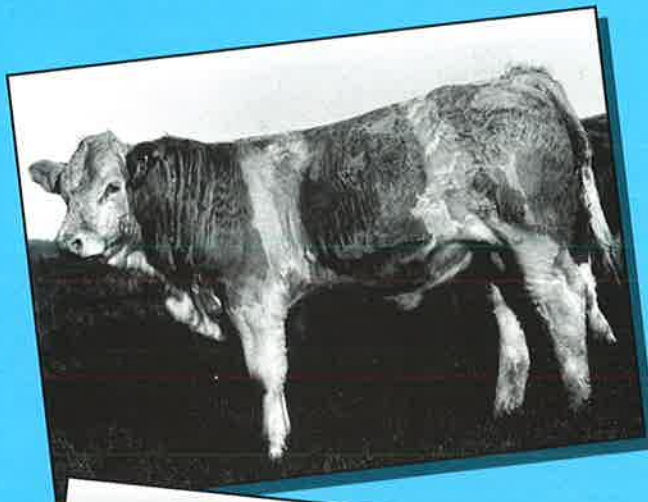
# New Zealand Simmental

Vol.37 1993





# WHAT DO THESE YOUNGSTERS HAVE IN COMMON?



**HERE'S A CLUE -**

*'They call him Dad'*

Read on...

# Beresford Simmentals

Gore Southern Breeders Sale  
21 May 1993

2 young stud prospects

## Beresford Ambassador & Amos



**Beresford Ambassador**  
(Born 10.9.91)

Willowbrook AX48

BBA Galant 12L

Freewalk AN 3

Beresford AW6

Willowbrook Remarkable

Beresford Lass

**The proof of Beresford Sired Bulls is in their  
progeny around the Southern South Island.**

**Inquiries Welcome:**

**Warren Burgess  
Beresford Simmentals  
Tel. 03 415 8019**



# Tap into the Good News

## Stud Bull Buyers

**D**o you wish to tap into a herd described to us as the best in all of Europe?

Springbrook Simmental Stud is offering at Palmerston North two outstanding French Blood Sires.

Fresh from all breeds show success against Royal Show Champions.

Visitors and enquiries always welcome by contacting Colin, Valmai or Mark Patterson at Springbrook.



**Springbrook French Ambassador**

**Springbrook  
Simmental Stud**

**Colin, Valmai or Mark Patterson  
Springbrook, Lakeside R D 3 Canterbury  
Tel. 03 324 3706**

# CONTENTS

*While every effort is made to ensure the accuracy of material published, no responsibility will be assumed for errors or omissions. Opinions and views expressed in this publication are not necessarily that of the Simmental Cattle Breeders Society.*

*Cover: Courtesy of Reid Farmers Ltd & Glenside Simmentals. Photographer: Jonathon Cameron*

## New Zealand Simmental Vol. 37 1993

Published by the Simmental Cattle Breeders Society, 256 Oxford Terrace,  
P O Box 13-142 Christchurch, Tel. 03 379 3166  
Fax. 03 366 9494

Production by C.F.I. Partners, Christchurch,  
Tel. 03 377 2148  
Printed by Herald Communication Ltd, Timaru.  
Tel. 03 684 4129

<b>Editorial</b>	<b>4</b>
<b>Councillors</b>	<b>4</b>
<b>Presidents Message</b>	<b>6-7</b>
Four years as president of the society, David Carter looks at the changes that have occurred during this time.	
<b>Red or Black</b>	<b>8</b>
It's all in the Genes. An explanation of the Diluter gene in Simmental Cattle.	
<b>World Simmental Congress</b>	<b>10-11</b>
Jim Houlbrooke reports on his visit to North American Simmental ranches and his attendance of the Congress held at Dallas in October 1992	
<b>The Key to Big Weight Gain</b>	<b>12</b>
A farmers change from a sheep to a beef fattening regime.	
<b>The Beginning</b>	<b>14-15</b>
Mr Dick Kerr recounts the establishment of the Simmental Society.	
<b>BreedPlan News</b>	<b>16</b>
<b>Simmentals in Canada</b>	<b>18-19</b>
Don Graham attends the 25th Anniversary of Simmentals in Canada and North America.	
<b>Eat to Meat: A Question of Energy</b>	<b>20</b>
When quality of pasture is more important than quantity.	
<b>Internationally</b>	<b>22</b>
Simmental happenings from overseas.	

<b>Grass Staggers</b>	<b>24</b>
A new product to help in the prevention of this old problem.	
<b>Challenges for Beef Exporters</b>	<b>26-27</b>
Beef imports have been restricted for the third year in a row into the U.S. - the challenges mount.	
<b>From the Clubs</b>	<b>29-31</b>
A regional roundup of activities from the New Zealand Simmental Clubs.	
<b>Simmental Breeders of Brazil</b>	<b>34-35</b>
Werner Gut, reports on his visit to the Simmental Breeders of Lagas, St Caterina Brazil.	
<b>Junior Herdperson</b>	<b>36-38</b>
<b>Royal Show</b>	<b>39</b>
Photos from the Royal Show, Christchurch, Nov 1992.	
<b>Make Pelvic Area a Heifer Section Tool</b>	<b>41-42</b>
<b>Operating in the Real World</b>	<b>44</b>
Commentary from the Past Vice President of the American Simmental Association, Earl Peterson.	
<b>Shape and Performance</b>	<b>46-48</b>
The shape of cattle as it relates to performance	
<b>Minutes</b>	<b>51-53</b>
21st Annual General Meeting of the Simmental Cattle Breeders Society	
<b>Show Results</b>	<b>55-62</b>

### Advertisers Index

Allflex	21	Glen Anthony Simmental Stud	54	Puketawa Simmentals	31
ANZ Banking Group	30	Glenside Simmentals	IFC, 45, 52,	Premier Genetics NZ Ltd	8
Applied Technology Ltd	31	Helensbrook Simmentals	9	Reid Farmers Ltd	38
Avon Park Simmentals	32-33	Herd Magic	63	Rissington Simmentals	IBC
Beresford Simmentals	1	Herrington Simmentals	40	Rivendell Farm Simmentals	7
Brocade Simmentals	50	The Levels	BC	Southern South Island Sale	25
Brooklands Simmentals	44	Mahan Marine Ltd	8	Springbrook Simmentals	2
Cawdor Simmental Stud	5	Makerikeri Simmentals	11, 42	Spring Dell Simmentals	11
Central South Island Sale	12	Money more Simmentals	37	Thurston Simmentals	48
Challenge Seeds Ltd	24	National Beef Competition	48	The Trossachs Simmentals	57
Eastbrook Simmentals	28	NZ Rural Press Ltd	43	Wai-iti Simmentals	52
East Dome Stud	15	Pineview Simmentals	16	Waingaro	38, 63
Elders Pastoral NZ Ltd	28	Pouriwai Simmentals	23	Willowbrook Simmental	13

# Editorial

I would like to thank all the people that have contributed to the magazine and for the advertising support we have received, without either we would not have a magazine to publish.

1993 has started with many changes. One being the change in management of your Society, but the major change that will impact most on all Simmental Breeders is the introduction of Breedplan.

You will see as you read through this magazine that little space has been given to Breedplan. Between seminars, manuals, printouts and our Simmental News we will tackle Breedplan throughout the year as a larger project. So please make the effort to attend the seminars, ask questions of your local Councillor and feel free to contact the office and myself at any stage.

The Simmental Society and all its members have a great opportunity to effectively use and develop Breedplan into a useful management and marketing tool for their cattle breeding program.

Breedplan information introduces another component to the complicated science of cattle breeding. It should not override common sense or limit the direction of a breeding program - it should be used in a balanced approach to speed the future development of our excellent breed "Simmental".

We look forward to an interesting 12 months that will be filled with questions and queries in regard to 'Breedplan', 'EBV's', 'Management Groups', 'Weigh Dates', 'Outliers', etc. Lets make it a constructive period - to further improve our valuable database and prepare the Simmental Cattle Breeders' of New Zealand for the remaining 1990's and beyond.

*Paula Forde*  
General Manager



Paula Forde



Yvonne Kingsland



Jeanette Smith

## Council 1993

### President

David Carter	Manor Farm, R.D. 1, Lyttleton, Canterbury	Tel. 03 329 9731
--------------	---	------------------

### Vice-President

Don Graham	Waingaro, R.D., Parnassus, North Canterbury	Tel. 03 319 2809
John Absolom	Rissington, R.D.4, Napier, Hawkes Bay	Tel. 06 839 5836
Rod Cox	The Levels, R.D.4, Timaru, South Canterbury	Tel. 03 688 2418
Lachie McLachlan	Helensbrook, R.D., Milton, South Otago	Tel. 03 417 7077
Peter McWilliam	Admiral Road, Gladstone, Masterton	Tel. 06 372 7724
Woody Rouse	Five Rivers, R.D.3, Lumsden, Southland	Tel. 03 248 7621
John Scott	Roberts Road, R.D.2, Cambridge, Waikato	Tel. 07 827 2864

Simmental Cattle Breeders' Society  
256 Oxford Terrace  
P. O. Box 13-142  
Christchurch  
Tel. 03 379 3166  
Fax. 03 366 9494

### Contact:

Paula Forde  
Yvonne Kingsland  
Jeanette Smith



**Cawdor Simmental Stud Third Annual**  
**Open Day**  
**Friday 4 June 1993**

We will be holding our Third Open Day of the Cawdor Stud on Friday June 4th.  
The Cattle presented include:-

***R2 Bulls entered in the combined Nelson  
Sale on Friday 2nd July 1993  
R2 Bulls for Private Sale in 1993  
1992 Heifers and Bull Calves***

The Open Day commences at 2.30pm on the farm at Maruia  
(20 Kms north of Springs Junction on State Highway 65 to Murchison)

After the Open Day there will be refreshments and a social function  
at the Maruia Hall, which is adjacent to the farm.

**All Welcome**

Further Information available from:

Derek Brown.

Phone & Fax. 03 523 8867

Bill Macbeth.

Phone. 03 352 7708 Fax. 03 352 2433

**Cawdor Simmental Stud, Dunsinane Hill Farm, Maruia.**



# Presidents Report

David Carter

*My four years as President of your Society has been very rewarding, but it is time for some other person to take up the reins. I will be finishing my involvement with the Simmental Council later this year, with a tremendous sense of satisfaction.*

**I** joined the Council in 1984, and have therefore been party to significant developments, which I will now recall so you can reflect on the progress of your Society

over the last decade. I believe the thrust and direction of the Society has been good. To be the second most active beef breed society in the country within twenty years of establishment is a remarkable

achievement. But the challenge is "where to from here"? The day we all stop striving to move forward, then we are in danger of resting on our laurels and believing that our breed is so good, that we have no competition. A dangerous assumption. I hope that day never arises for the Simmental Society. Yes, we have chosen to be involved in a tremendous breed, but the technologies of cattle breeding are developing rapidly and we all have a duty to move with these developments, to ensure that Simmental stays at the fore-front of the beef industry.

The most significant change made while on Council was the alteration and management of the Society's asset structure. In 1984, the major portion of Society assets were publicly listed company shares. The ride of the sharemarket from 1984 to 1987 was enjoyable and for a while we all thought we were experts. With hindsight I suggest we were lucky. We were conscious of the dangers and actively researched the investment in a commercial building, suitably tenanted, to ensure a good return and provide good security.

We completed the purchase of such an investment in 1988, and thereby reduced our sharemarket exposure significantly. Our 'bricks and mortar' have been very successful. We are earning a good yield having secured a first class tenant. The building is attractively situated, and therefore has performed with exception, as regards to capital growth.

However, a Council of the future must continually review an investment portfolio. We must never fall in love with this building, simply because it has been good for us. There will be optimum time to realise this investment, and at all times, your Council must be aware of other



David Carter, retiring as President of the Simmental Cattle Breeders Society after four years in the position.



forms of investment, that may more readily suit the future requirements of the Society.

During my presidency, I was involved with three changes of management. Which always tends to unsettle continuity and provide some sense of uncertainty to the

costs. But invariably we do not. We do the job because we see it as a "labour of love", a chance to return to our breed, something of what it has given to us.

I return to my opening comments. The work is enjoyable and rewarding. You meet some interesting people, and I

appeal to you to consider giving it a go. As we develop Breedplan, the challenge is going to be getting our members to use it properly. So if you believe you have something to offer, and if you are prepared to give some time,

stand for Council.

The performance and pedigree recording system that is available to our members is critical to the ability of our breed to compete with the opposition. Shortly after I arrived on Council, the New Zealand Meat Board signalled their intention to cease operating Beefplan, and the choice available to us was to

investment realisation will be significantly reduced. Are you in Simmentals as a hobby or a business? Invariably, the answer will be as a business. Therefore the aim to improve your herd without performance recording your cattle, is akin to attempting to mow a paddock of hay with a pair of scissors! If you expect that you or your children will be reading this magazine in ten years time, in other words, that your herd will still be in existence, then I assure you it will only be there, because you have joined the Breedplan programme, start now and utilize the information that Breedplan produces for the selection of your replacement livestock and for the selling of your studs progeny.

I hope by now that you realise that my ten years with the Council has been very interesting and challenging. But what I will remember the most, is the reward I have had, from working with such an interesting and diverse range of people. I include in that obviously our membership, but also a large number of cattle people throughout New Zealand and around the world. Included are the various Councillors and staff that have worked for the Society during my term. Also the large number of professional people such as publicity and promotion advisers, whom services we have called upon.

Our Society is a success. I wish it luck as it strives to maintain its prominent position within the New Zealand beef industry.

But I wish our opposition breeds

even more luck - because if we continue to repeat the progress of our last twenty years, then they are going to need it to keep anywhere near us.

Thank you.

*David Carter*

---

***"The investment we have made is huge unless we all make an effort to utilize Breedplan wisely, the investment realisation will be significantly reduced"***

membership. I was lucky to be able to work closely with each Society Manager. Three very different people, who have each left their own style and attributes within the office. I welcome Paula Forde to our Society. The dedication and enthusiasm with which she has tackled the installation of Breedplan has been inspiring. The Society is at an exciting stage in its development. And for us to exploit the opportunities that are there for our breed, we need someone with Paula's qualifications and abilities.

I have always been impressed with the dedication of the support staff that our management has employed. The members have received far more input than was required, or in other words, tremendous value for money. To the women who are presently part of our team, Yvonne and Jeanette, I take this opportunity of expressing a vote of thanks on behalf of our membership.

Another aspect that has been extremely stable throughout my term has been that of the Simmental Council. There has been a very low turnaround of Councillors. Is this good or bad? Does the lack of council elections signify that our membership is pleased with the performance of the Society, and therefore no one wants to challenge the status quo? Or alternatively, does it signify a complete lack of interest, and a level of complacency?

I believe you have had a very dedicated bunch of Councillors, who have worked hard on your behalf. And as I move around the country meeting you, I sometimes feel that some of the membership do not appreciate the work these people do for you. It takes a lot of time, it is unpaid, sure we can claim some expenses such as travel and telephone

---

***"What I will remember the most, is the reward I have had, from working with such an interesting, and diverse range of people. I include in that obviously our membership, but also a large number of cattle people, throughout New Zealand and around the world."***

purchase Beefplan, and become independent. It was a good choice. We negotiated a very advantageous cost of entry, but knew from the outset that obsolescence would eventually require the Society to consider alternative systems.

The advent of Breedplan, and its ready acceptance by other major Beef Breed Societies, made Simmental's option obvious.

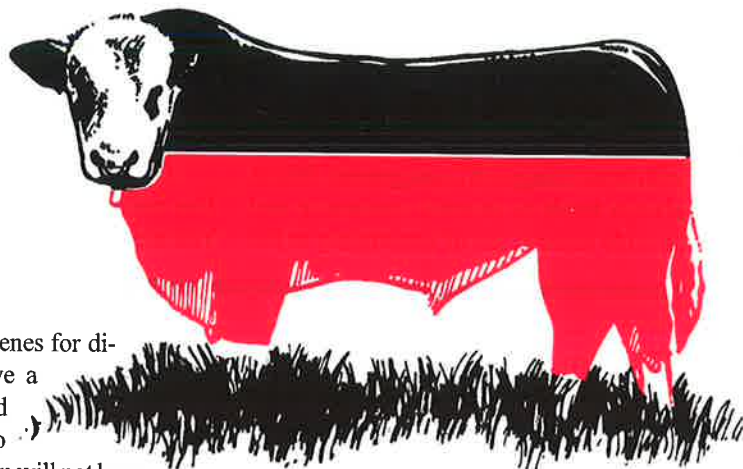
But I would like to reinforce one point with you. The investment we have made is huge. And unless we all make an effort to utilize Breedplan wisely, the

## FOR SALE

Two Registered purebred, rising 2 year old bulls, by Maraetotara Prince out of Tokaweka bred heifers. Maraetotara Prince is a proven easy calving bull from the Royal Meat & Wool Cup winners Jade and Irish Empress and a champion himself. Both bulls have excellent temperaments. P.O.A.

**John Longville, Rivendell Farm Simmentals  
Tel. (09) 423 8506**

# Red or Black ?



## An Explanation of the Diluter Gene in Simmental Cattle

**T**he diluter gene in Simmental cattle is receiving considerable attention as more breeders try to breed their cattle either black or dark red. Because of this many questions have been raised regarding the diluter gene and how it affects colour in Simmental cattle.

Today's Simmental cattle have two basic colours - either red or black. The genes for red and black determine what colour an animal will be. Another set of genes determines if colour is diluted or non diluted. The diluter gene 'washed out' the basic red or black colour, i.e., making it lighter. Whether or not cattle carry the diluter gene decides to what degree of darkness or lightness their hair colour may be.

The gene for dilution is dominant to the gene for non dilution. The animal that has one gene for dilution and one gene for non dilution will have a diluted colour (yellow in the case of red Simmental and grey in the case of black Simmental).

Animals with two genes for dilution will also have a diluted colour and animals with two genes for non dilution will not have a diluted colour. Most Simmentals (probably over 80%) have the diluter gene.

Here are some items that may help you answer some of the questions that you may encounter regarding the diluter gene.

- Because of the varying shades of red in Simmental cattle, it is difficult to decide if animals carry the diluter gene just by looking at them.

- Yellow cattle carry either one or two genes for dilution. They are either homozygous or heterozygous for dilution. Bred to a non diluter red bull these cows have the possibility of producing either yellow (diluted) or red (non diluted).

- Black Simmental cattle do not carry the diluter gene. But they can still sire

diluter calves when bred to yellow diluter cows.

- Homozygous Black bulls can still sire grey calves if bred to yellow diluted cows. These same bulls bred to dark red, non diluted cows will produce black calves.

- A grey calf must be carrying a black gene. Not all grey calves are "rat-tail calves". The rat-tail syndrome is a condition in which grey calves have short, curly hair coats with an abnormal tail switch. This condition can reduce performance as well as reduce value in some markets.

- In situations where breeders don't want to take the chance of getting grey calves, it makes more sense to breed for darker red than to breed for black.

### mahanmarine

Yacht Chandlers

191 Ferry Road,

P O Box 25-020 Christchurch

Tel. 03 366 0276 Fax. 03 366 2883

#### CATTLE HALTERS

Cattle breeders New Zealand wide, use our Polyester rope halters with great success.

- ★ Simple easy to use
- ★ Superstrong 2500Kg breaking strain
- ★ Abrasion resistant
- ★ Knots don't tighten when wet
- ★ Colourfast & machine washable (Polyester loves soap and water)
- ★ Available in Red, Blue or White
- ★ Price - \$38.95 GST inclusive

Available from Simmental Cattle Breeders Society

P O Box 13-142 Christchurch

#### ORDER FORM

Name

Address

Telephone

Please forward the following cattle halters to the above address

Number	Colour	@ \$38.95	= \$
		Postage	= \$

Postal charges - \$2.20 per halter, \$6.00 4 or more

Please enclose cheque with order



## The Complete Embryo Transfer Service

## On Farm Custom Semen Collection

## Semen and Embryo Sales

Contact: Premier Genetics NZ Ltd  
Ingram Road, RD3 Drury  
Tel. 09 2360 616 Fax. 09 2360 327



# HELENSBROOK SIMMENTALS

(Herd 1257)



## "The Winning Team"

Helensbrook Wynette (Maraetotara Prince x H.B. Ruth)  
& Helensbrook Bonanza by Rissington Rival

Christchurch Royal Show 1992 - Champion Senior Female  
- Grand Champion Female  
- Supreme Champion Simmental  
Invercargill 1992 - Champion Female  
- Supreme Champion Simmental

## 5th Annual on Farm Sale

Wed 19 May 1993 - 2pm start

Bulls by - Rissington Rival - Shawest Big Red  
- Helensbrook Roland - 1/2 Brother to H.B. Underwood  
(1987 Royal Champion)

*Enquiries and Inspection Always Welcome*

**Contact: Lachie & Helen McLachlan, 'Helensbrook Simmentals',  
Main North Rd, Milton, South Otago  
Tel. (03) 417 7077 Fax. (03) 417 8751**



# World Simmental Congress

Jim Houlbrooke

*"We saw a great variety of types which indicated the priority of many breeders was to cater to the 'Black is Beautiful' concept without being too concerned about conformation"*

A small contingent of seven Kiwis attended the World Simmental Congress at Dallas, USA in October 1992. A pre-Congress tour of Oklahoma, Kansas and Texas, together with activities associated with the congress in Texas gave us a comprehensive insight into the American beef industry, including visits to breeding ranches, bull test stations, feed lots, stud sales, shows, a large packing plant, and lectures at the Kansas Agricultural University at Garden City.

A chance to meet and get to know delegates from over twenty beef producing countries with a wide divergence of climate and conditions, gave rise to some interesting discussions on differing perceptions of the ideal Simmental.

Amongst the many thousand cattle made available for inspection, we observed a surprising number of inferior stock showing poor muscling and

on the prevailing showing fashion.

Fortunately many breeders have become aware of the situation and are taking steps to moderate their cattle size with an improved degree of fleshing. The show we saw at the Texas State Fair was generally rewarding this type. However with so much capital invested in the "cigar on stilts" trend, I fear studs will try and breed their way out instead of culling and if that happens, the American Simmentals will suffer a lowering of credibility World wide.

I must hasten to add that we also saw many very fine animals and providing their background is consistent, they could still provide a valuable genetic pool for New Zealand, but I believe extreme caution is necessary.

An interesting phenomenon we observed in the American cattle scene was the emergence of the black Simmental. These are now being produced in large numbers with many studs aiming at entirely homozygous black and polled cattle while many ranches are breeding various combinations of black, black baldy, and red baldy.

We saw a great variety of types which indicated the priority of many breeders was to cater to the "Black is Beautiful" concept without being too concerned about conformation. At one ranch which had produced some very creditable black cattle, it was suggested that they find a new name for their breed as it bore no resemblance to Simmentals - this produced quite a lively debate!

An infusion of Simmental blood in commercial breeding females seemed very popular but many tried to keep the ratio at no more than 50 percent.

With most beef being finished on feedlots and costs calculated on a daily basis, weight gain is given more credence than carcass yield and it was most surprising to see the amount of excess fat being trimmed at a large packing plant we visited in Kansas.

It is apparent that in all the Western states, the Simbrah has achieved a great



N.Z. Contingent  
at the Chuckwagon,  
on R A Browns  
ranch at  
Throckmorton,  
Texas.

structurally unsound, with the worst faults being post legs, weak backlines with high tail settings, and generally poor mobility.

Many of these problems have resulted from a frenetic ambition to breed cattle with a high frame score and cash in

***There is no doubt the Simmental breed has made a very definite impact on the American beef scene over the last twenty years***

following and we were most impressed with a type of cattle we see little of in New Zealand, but we know is favoured in both Australia and Africa. Perhaps our conditions are not harsh enough to highlight the particular attributes of this exciting cross breed.

Amongst the thousands of cattle we saw on feedlots, every breed imaginable was represented in some form of cross, but surprisingly few pure-breds, even of the traditional breeds, showed up.

There is no doubt the Simmental breed has made a very definite impact on the American beef scene over the last twenty years.

Although our trip was very tiring owing to the vast distances travelled entailing early starts and long days with little sleep, seeing plenty of cattle was our aim and that we certainly achieved.

Our American hosts made sure that the renowned western hospitality was no myth.

***A few notable highlights of the trip included:***

- A ranch in Oklahoma running 500 registered polled females with 100 bulls for sale.

- A bull test station at Stillwater where six breeds of bulls are group fed for eight months and then the top 70 percent are auctioned with full records of weight gains etc.

- The Echo ranch in Kansas, 9000 acres running 800 Simmental cows, mostly bred up from purebred Angus and specialising in retaining the black colour.

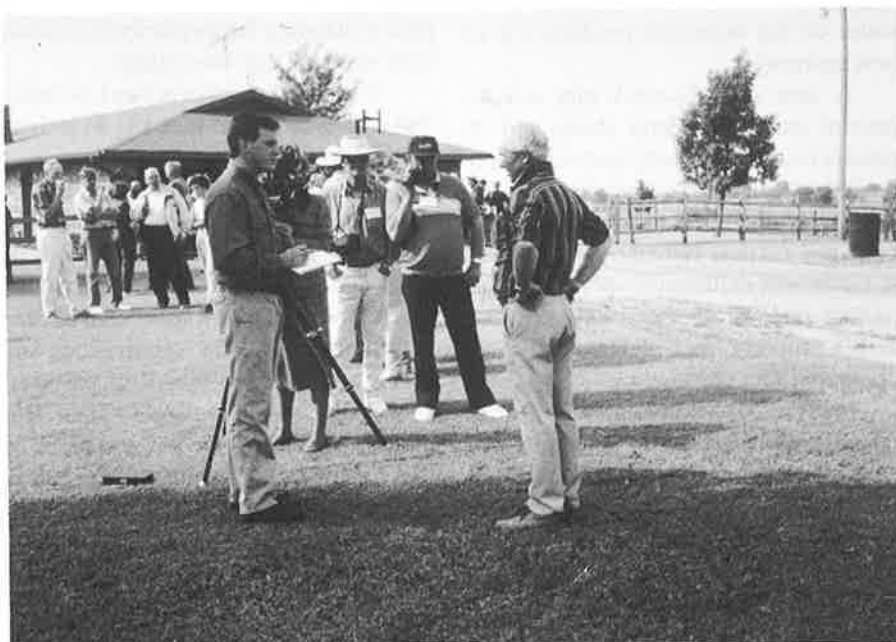
- A trip through a snow storm to inspect a bull test station at Beloit where 11,500 bulls have been fed, recorded and evaluated, with only the top 50 percent put up for auction. We braved a raging

- A feedlot in Kansas where 13,000 cattle are fed in a feedlot, ethanol plant and fishery, all interrelated and providing an example of re-use of available resources.

- Henry Fields' ranch in Texas where we saw mobs of top quality cows run on very poor hill country pasture, but at only one cow per 25 acres.

- R A Brown's ranch in Texas where we were entertained by a display of working cattle by quarter horses, both cutting and roping.

- Numerous other ranch visits, a glamour sale of selected pure-breds, a trip to South Fork, the venue of the TV show "Dallas", and a couple of days at the Texas State Fair.



blizzard to leave our coach and observe a mob of young bulls having their semen tested, and their scrotal measurements recorded. All the men agreed it was rather a pointless exercise on such a bitter day.

The Kiwis giving their spokesperson strong support during a T.V. interview just in case he felt nervous!

## **SEMEN FOR SALE**

- Brundish Prosperous
- Dynasty
- Lonsdale Farm Bernard
- Lyric E.S.
- Scottish Big Michael
- Singlenick Doubletime
- TRN Mr Parie

**Priced very competitively. If interested please phone Penny Wright, (03) 312 - 8788**

## **Spring Dell Simmentals**

**Herd 1395.**

**Enquiries and Inspection  
Welcome**

**D.E. CHEETHAM  
R.D.2.  
EKETAHUNA.**

**D.E. CHEETHAM 06 372 5831  
S.D. CHEETHAM 06 375 8234**

# THE KEY TO BIG WEIGHT GAIN

*Courtesy of The New Zealand Meat Producer*

**L**ast year, Will Findlay made a big investment in change. Already, he's seen it pay off, largely because of the increased productivity of new pastures.

A year ago, his stock mix was 80 percent stud Coopworth sheep and 20 percent beef cattle, mostly homebred Simmental or Belgian Blue crosses.

Today the mix is reversed, with 600 bulls, and just over 1000 sheep. The switch to cattle was deliberately-planned, with pasture renewal always a key element. Will's property, east of Dannevirke, is dry and in rain shadow.

Will Findlay has been plotting growth rates for bulls and steers for almost ten years. With the new pastures, a mix of tall

fescue, cocksfoot, chicory and clovers, both bulls and compudosed steers reached by November the weights they wouldn't normally achieve until January. Average daily weight gain was 2.68 kg. A control group on ryegrass, less intensively stocked, managed 2 kg at best.

"I sold my 16 month homebred bulls in late January at 564 kg liveweight, because of falling schedules. I would have liked to have carried them on. I think they would easily have reached 700 kg by June," he said. "They killed out at 300.6 kg, the best ever yield percentage I've had.

"I'm really thrilled with what we've done. One of the best things that happened to me was meeting Gavin Milne."

Grassline's advice was an essential part of planning the switch from sheep to beef - a major step financially.

"I'm a conservative at heart, but once I'm convinced of an idea I'll do it thoroughly," Will Findlay says.

"We did a five year prognosis for sheep and cattle, and decided to go for cattle. I sold most of my capital stock of ewes and bought in big Friesian bulls (400 kg or more). I've spent a lot of time and money with new subdivisions and bull-proof water supplies. With pastures, palatability was a big consideration. Big bulls need to eat a lot to put on weight, so they must have something that appeals to

them."

He followed Gavin Milne's advice that establishment is the crucial phase of new pastures. He chose to spray the areas to be sowed to reduce competitive growth, before direct-drilling new seed; an option is leaving them fallow for a period.

"I estimate it's cost us \$600 a hectare, about twice as much as Gavin suggested it would. We intervened whenever there was a potential problem, such as slugs, so we had a high seed survival rate.

New tall rescue pastures need to be leniently grazed while establishing. Later, they can be rotationally grazed or set stocked for periods. August to November is the key management period to graze the quick spring growth for best summer condition.

Under the Grassline programme, Will is also committed to fertilise to maintain the gains from high performance. "The extra spending will be justified with production gains up to \$ 1000 per hectare," Gavin Milne said.

Will Findlay's beef gains have really justified his outlays, and have put him well above target for the required first year turnover. He was able to recoup all the first-up establishment costs in just over 100 days - a result calculated on conservative estimates, Gavin Milne says.

"His good results would be even better in a normal (that is, dry) summer."

## THE 1993 CENTRAL SOUTH ISLAND SIMMENTAL BULL SALE

**Temuka Selling Centre, South Canterbury.  
Wednesday 16th June 1993. Commencing at 1.00pm**

**42 top quality selected Simmental Bulls  
(Registered & Commercial)**



*Further information available in the catalogue.*

Secretary: Mr D J Matheson, Govenors Bay Tel. 03 329 9397

### Vendors:

M G Elliot  
C Cairns  
JR & SE Sutton  
AR & JA Midgley  
AAT Partridge  
D Carter

"Island Stream"  
"Takiroa"  
"Stone Hut"  
"Willowbrook"  
"Ladburn"  
"Avon Park"

DE & J Matheson  
IG & PJ Wright  
JD Graham  
BJ & CF Logan  
JC Hall  
IR & JR Caird  
MEJ Parr

"MacMathan"  
"Makerikeri"  
"Waingaro"  
"Glenford"  
"Pendeen"  
"Alyth"  
"Rufford"



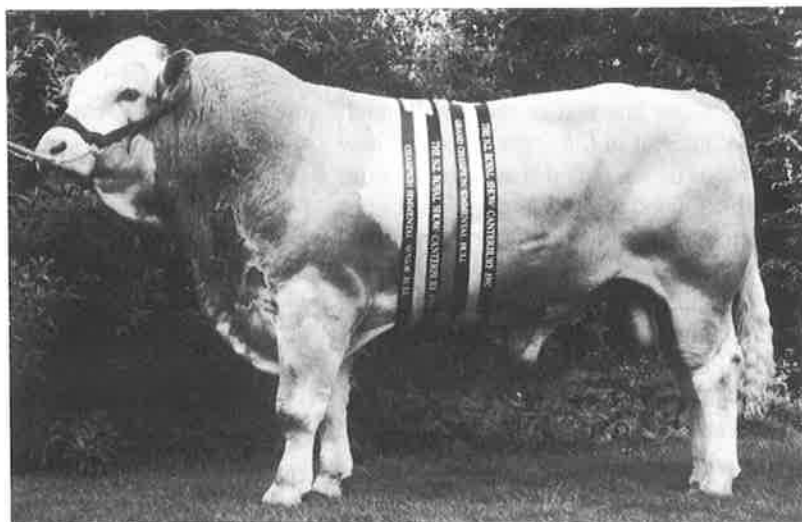
# Willowbrook Simmentals



## ***Our Selective breeding programme ensures***

- ***Calving Ease***
- ***Excellent Weight Gain***
- ***Quiet Temperament***
- ***Emphasis on polled cattle***

**Willowbrook Zak**  
**Grand Champion Simmental Bull 1992 Royal Show.**  
**We are now offering this outstanding bull for private sale**



**Willowbrook Adam & Willowbrook Apollo will be for sale at Palmerston North 22 June 1993**

**At the Central South Island Simmental Sale on Wednesday 16th June 1993 at the Temuka Selling Centre we will be offering an excellent selection of our top bulls many of which are polled**

**Call now regarding inquiries and herd inspection:**  
**Alastair & Jessica Midgley, Willowbrook Simmentals, RD 2, Timaru**  
**South Canterbury New Zealand**  
**Tel. 03 612 6671**

# The Beginning

By R H Kerr

*When Paula asked me to write something about the formation of the Society my re-action was that I had forgotten all about that. I don't like dwelling on the past, what lies ahead is much more interesting. However Paula was persistent and when I was given a copy of the early meetings I realised that there was some thing there to write about.*



Chairman of the  
first Simmental Council.  
Mr R H Kerr

In the late sixties there was much interest in the introduction of new or as we called them exotic cattle into England and we realised that once there they could eventually be imported here.

Charolais semen had been smuggled into England in the early sixties and I think in 1967 Jack Sutherland of Waimate had imported semen into New Zealand and by 1968 or 69 had half bred calves on the ground.

I had decided to import some South Devons, six heifers and a bull and in April or May I was advised that I should go to England and select. This I didn't want to do for family reasons and I asked Don Graham to go for me. He, at that time was Head Auctioneer with N.M.A. in Timaru. Before he went we asked him to investigate the Simmental for we knew then that a shipment from Germany was in quarantine. That is how I became involved because he met the German export people from Imex at the Royal Show and then went down to Munich to see them. He was impressed and we became involved with importing.

Messrs John Austin and Ran Macdonald were both interested in Charolais and Simmental cattle and they called a meeting to be held in the Wool Exchange in Christchurch on 18th June 1971. The meeting was well advertised because 60 attended and with 18 apologies, there was representation from Northland to Southland.

At the meeting John Austin was elected Chairman, the Society set in motion, a Steering Committee appointed and they were given the task of drafting the Constitution, Rules and Regulations. At

the meeting were two representatives from the Australian Society and this early contact proved of great value.

The Chairman asked for any ideas and this produced a lot of differing points of view on the whole question of grading-up but from memory we were allowed to be open minded but to concentrate on production.

Mr. Barton of Massey University then gave a general talk about the Breed and its establishment and its spread

internationally.

The Steering Committee having completed its work called for a General Meeting to be held in the Russley Hotel on 7th April 1972. This was ten months later and now that seems a long time but there had been a lot to do and we were all busy people.

To cover the work of the Steering Committee, the Chairman, Mr. John Austin presented the following report and I think it fully covers what was achieved.

## REPORT ON STEERING COMMITTEE ACTIVITIES

It is now my duty to report to you on the activities of the Steering Committee which was elected at the inaugural meeting on June 18th last year with instructions to draft a constitution and propose other arrangements for the management of the breed, as thought necessary. I can certainly report that this Committee has been very active and has completed, after five meetings the recommended Rules and Regulations sent to you with the notice of this, the 1st Annual Meeting today.

The Steering Committee recommends these Rules for your adoption. The Rules have been perused and approved by a legal practitioner. As the breed develops in New Zealand, modifications and additions to the regulations will become necessary, but in accordance with modern practice, the Rules give the Council powers to make modifications if required.

Some of the most important decisions of your Steering Committee are:

- (1) Emphasis must be given from the outset to recording performance of the animals admitted to registrations, in addition to the normal details of breeding.
- (2) The importance of sound promotion to the public from the Society.
- (3) The importance of good liaison from Council to members with information given to members on breed developments, preferably by periodic news letters.

The Steering Committee also felt that qualifications of the base cows used in breeding-up programmes should not be restrictive and that any breed or cross should be accepted.

The Steering Committee successfully organised an itinerary for Dr Reist in November. The Simmental breed was given widespread publicity by Dr Reist's visit and about 600 farmers heard his address in Palmerston North, Timaru and Christchurch. A worthwhile contact has now been developed with Dr Reist and it would be

in the best interests of Simmental breed in New Zealand to foster the relationship with the German administrators as a great deal of valuable information is available from that Country.

As instructed from the inaugural meeting, the Steering Committee protested with vigour the controversial Government importation of live cattle from Europe. A deputation met the Minister of Agriculture and the result was unsuccessful as the cattle have now arrived in the country at Somes Island. Membership at present stands at 125 and this is extremely encouraging. All those known by the Committee to be interested in Simmental have been contacted and the response to membership has been excellent.

#### **Finances:**

Ladies and Gentlemen, I would personally like to thank the Steering Committee for the excellent effort each member of the committee has contributed. It would also like to thank our Secretary, Mr. Studholme. His wide experience in breed society administration has been very valuable and the Simmental breed is very fortunate that Mr. Studholme has offered his services for another year.

I believe the Simmental breed is away to an excellent start. The success in the future will depend on the attitude of breeders to continue to build a strong Society and to be dedicated to breed top quality animals.

At the last meeting of the Council, Mr. Austin had told us that for personal reasons he would not be available for election to the new Council. This we all regretted very much because he had been the instigator and strength behind the Committee.

The A.G.M. was attended by 72 members and we considered this a good percentage. With only minor changes the Rules and Regulations presented were adopted. It was interesting that at this stage the Society had a credit balance of \$1,253.55 and there were constant applications for membership. Mr. R. G. Macdonald reported on his meeting with the Australian Society. Originally there had been two Societies but they had amalgamated and Mr. Vincent from Western Australia had been elected Chairman and he expressed his wish to work closely with New Zealand.

Finally there was an election for the Council and the following were elected: Messrs F.C.Graham, R.N.S.Cox, R.G. Macdonald, R.H.Kerr, M.T.Bamford, H.R.Irving and J.M.Scott. Interesting, that today only Rodney Cox remains a leading Breeder.

The first Council Meeting dealt very much with routine matters.

I was elected Chairman and Mr. Barton co-opted to the Council with a term set of three years. A small executive was appointed and Mr. H.M.Studholme who had acted as interim Secretary was appointed Secretary.

Our next meeting of the 6th and 7th of July was an important one.

The Executive had given permission for myself and Mr. Bamford to meet with the Australian Society and this, we real-

ised, was of great importance to us as we realised that the Charolais Society had lost control in the early days as many half bred cattle had been exported and not registered in New Zealand. Apart from loss of income to the Society it meant that many inferior animals had been exported.

The Australians welcomed our visit. We were ahead of them and they were anxious to know what we had achieved.

The Australians accepted our wish that they receive no cattle from New Zealand unless they had been registered with us. They wished that all registered cattle be inspected and this we endeavoured to do. We had set a fee for export and we agreed to share this with the Australian Society. As well we both agreed that a registration fee for bulls standing at A.I.centres should not only be duly registered with us but a fee be set at \$250. To ensure that inferior bulls were not registered the applications had to be supported by a certificate from a mem-

ber of the British Veterinary Society.

Throughout my time a President and I think since, we have had an excellent rapport with the Australian Society, and in those heady days when so many graded cattle were crossing the Tasman we attended occasional respective Council Meetings and as a form of gratitude to the Australian Society we presented a Silver Salver as the N.Z. Trophy for the Champion Simmental animal at the Royal Sydney Show.

It was at this time we realised that we needed a permanent Office and finally moved into what proved quite inadequate rooms in Wyndham Street, Papanui.

I've read no further but accounts for payment at this time are interesting. The Secretary's wages for July and August were \$340, tolls \$17.01, P.Burke & Co - lunch for Council \$6.10 and rent for six weeks \$31.87. Little wonder that with the registrations pouring in we were putting money in the bank.

This takes us to September 1972 and much water has run under the bridge since then. Perhaps I'll investigate and write more later.

MR.R.H.(DICK)KERR.

**EAST DOME  
STUD**  
HERD 901

**Will be offering 2  
18 month old bulls**

**Lot 8 son of East Dome Laser  
Lot 27 son of Rotomara Warcry**

**at the  
Southern Districts Bull Sale,  
Charlton, Gore  
Friday 21 May 1.00pm**

**Woody & Eppi Rouse  
Five Rivers  
3 RD  
Lumsden  
03 248 7621**



# Breedplan Wins International Acclaim

**B**REEDPLAN is fast becoming a household word in the beef cattle industries of the United States of America, Canada, New Zealand and the United Kingdom - just as it is in Australia. ABRI's Director, Arthur Rickards, was recently invited to give the keynote address to the National Pedigreed Livestock Council (NPLC) meeting in Amarillo, Texas. Session chairman, Dr. Roger Hunsley, told the representatives of the US' 500,000 pedigree breeders (representing 5 livestock species) that he regarded BREEDPLAN as the best genetic evaluation product available. "I've personally looked at similar programs in several countries as well as in the US and BREEDPLAN is the choice" said Dr. Hunsley. ABRI will be installing a comprehensive pedigree/ performance system for the American Shorthorn Association this month.

His endorsement was echoed by Bob Rolston, Executive Secretary of the 2,500-member strong American Salers Association. Rolston said his Association was privileged to be the first US group to adopt the BREEDPLAN system and the in-depth work

"went far beyond anything we ever expected."

Rickards' visit has led to the establishment of a strong formal link between the US pedigree industry and ours in Australia. The NPLC has offered membership of its organisation to the Australian Registered Cattle Breeders' Association Inc and vice versa. This will allow representatives of each organisation to attend meetings of the other organisation. Further, the Executive Director of the NPLC Mr. Zane Akins has been invited to Australia in November to give a management seminar for breed society executive officers and board members.

## New Zealand

Breedplan has been a runaway success in New Zealand. ABRI now holds contracts for the processing of pedigree and performance data for the following breeds in New Zealand - Angus, Hereford/Poll Hereford, Simmental, South Devon, Blonde d'Aquitaine and Salers. Collectively, these breeds make up about 90% of the beef cattle seedstock industry in New Zealand. Most of the contracts are of a long-term nature. The Kiwis are keen performance recorders.

## Canada

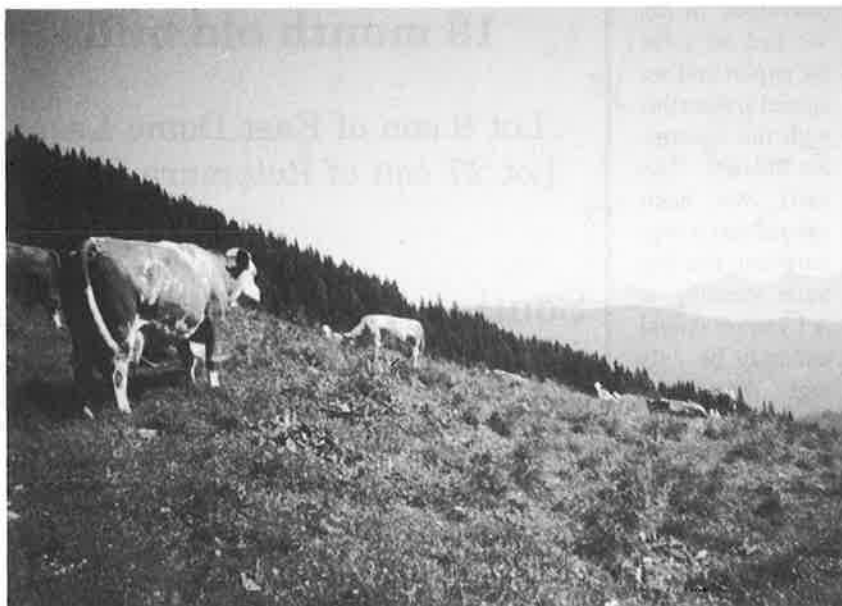
BREEDPLAN is being used as the focal point for recording and genetic evaluation of the Shaver Beefblend program. This involves a nucleus herd in Ontario and multiplier herds throughout Canada and also in Colombia, Hungary, New Zealand and Australia. Donald McQ Shaver believes that BREEDPLAN International will provide the necessary format to chart the breed's progress on a global basis. "I would like to compliment ABRI for its unwavering commitment to delivering a world class performance program and the dedication that ABRI's staff bring to that task", he said.

## Trade Implications

ABRI's strategy is to have BREEDPLAN established as the preferred system for recording and genetic evaluation of beef cattle internationally. This, in turn, will assist the effectiveness of international trade in cattle genetics. Australia has always been a big importer of cattle genetics. Some imports help our industry, others hinder it. But with BREEDPLAN in place internationally Australian cattle breeders will be able to zero in on herd-improving genetics. Also, Australian breeders will be able to become a much more potent force in the export of cattle genetics - by demonstrating through BREEDPLAN statistics just how well our cattle will perform in overseas countries. It all adds up to an exciting future for cattle breeders.

## Pineview Simmentals

(Herd No.52)



*Moris' Dam at 14 years, high in the Alps of upper Steiermark, Austria*

**We offer the first progeny of "Moris", the top progeny tested beef sire in Austria.**

**One son will be at Palmerston North. With two more at the Taranaki Simmental Breeders 7th Annual Sale at Inglewood.**

**Moris is the son of the famous Austrian sire "Morella".**

**The progeny of Moris had a daily gain of 1.457Kgs from birth to 431 days, at the Karlsdorf Testing Station.**

**Visitors are always Welcome  
W Gut  
29 RD Kaponga  
Taranaki**

# NO BULL!



## GLENSIDE ANNABELLE 1312/AA110

Sire: Munga Park Frederick Dam: Marfrey Wendy (PRP Douglas)

*Arguably the best rising 2 year I.C. heifer in N.Z.*

Plus

### GLENSIDE BOMBSHELL AB218

(Malvern Downs AYI - 'Aye Aye / Ignaz)

*Top daughter of our record breaking bull*

Plus

### GLENSIDE FIREMAN AB1E

(Bar 5 Redman / Munga Park Firefly)

*Only a yearling but bred to be a champion*

Plus

### GLENSIDE ARCTIC AA16

(Lonsdale Farm Bernard / Waimiro Pascal)

*2nd All-Breeds Yearling Bull - 1992 Christchurch Royal Show*

Plus

### 20 SELECTED RISING 2 YR SIRES

*All with Breedplan EBV's to take the guesswork out*

## ANNUAL PRODUCTION SALE

THURSDAY 20TH MAY, 1993 AT 1:30 PM

Trevor McCorkindale

ph: 0-3-485-9726

Garry McCorkindale

ph/fax: 0-3-485-9727

Ritchie McCorkindale

ph: 0-3-485-9202

*Proud to be part of*



## GLENSIDE SIMMENTALS

WAITAHUNA RD3 LAWRENCE OTAGO NZ



# SIMMENTALS IN CANADA

Don Graham

*The trimming,  
shampooing and  
blow waving would  
have left our best  
Beauty Salons for  
dead.*

Don Graham with Terri & Henry Gunster, who run one of the leading Fleckveigh herds. Pictured here outside their hand made log cabin at McBride, in the middle of the Rockies.

Last July Tish and I had the good fortune to attend the 25th Anniversary of Simmentals into Canada and North America, plus the A.G.M. of the Canadian Society held in conjunction with the Calgary Stampede.

We enjoyed the hospitality of the Canadians at the many functions we attended including dinners, cocktail parties etc. I was asked to speak on two occasions on behalf of the N.Z. Society and it's Breeders, taking the opportunity to elaborate on the success of the breed in N.Z. and whilst many blood lines from North America and Canada were being used here, some reciprocal trade would be appreciated.

The highlight of the Anniversary was the Cattle Show. The Canadians make a great spectacle of these events with the judging being conducted along similar lines to our shows in N.Z. but tremendous emphasis being put on presentation. The trimming, shampooing and blow waving would have left our best Beauty Salons for dead.

Great interest is shown in the steer competitions and sales where they are all

led and superbly presented, to the extent that some owners must be very reluctant to let them go to slaughter.

In the show ring I found difficulty in accepting the type of cattle on display with most of them being bred to extreme size, very long in the legs, weak bottom jaws, unable to move freely and lacking in the very thing that beef production is all about - MUSCLING. These cattle would take a long time to finish under our grass-land farming system. My criticism could be levelled at most breeds as they have all gone down the same track of size, at all costs.

My thoughts were confirmed when a guest speaker who was a buyer of thousands of head of cattle for a major feed lot verified the fact that finishing cattle of extreme size was too costly, leaving the well muscled animal of medium size what the industry required. Their commercial farmers are now demanding seed stock bred for soundness and their ability to economically produce top quality beef under the different environments in which they are farmed.

The conference over, we took off in a rental car to view the magnificent Canadian scenery and meet up with breeders we had met at the conference.

Our first port of call after Banff, Lake Louise and Jasper was the Great Guns herd at McBride, right in the middle of the Rockies where Terri and Henry Gunster had developed through hard work, a beautiful property out of the native forest where they run one of the leading full blood Fleckveih herds. Their sire "Great Guns Ferdinand" is available in N.Z. for the coming season.

Several hundred Kilometres later at a place called Pears we caught up





with two very successful New Zealanders, Greg and Carol Bain. Greg is a nephew of Graeme Bain from Outram and is a freelance heavy mechanic on call 24hrs a day all year round. Carol spends most of the winter in their basement making pottery which is highly sought after throughout Canada. They also seem to find time to develop their picturesque woodland property on which they are breeding up an excellent herd of Fleckveih Simmentals.

A change of breed for a day to inspect and video a young Hereford sire, Dunrobin Super Star on behalf of N.Z. breeders who have since successfully purchased a share in the bull from the well known St Anaud Hereford stud. The Bar None Stud in northern Alberta owned

by Park and Beth Letts and family was the highlight of our tour. Five hundred head of registered and commercial Simmental cows, structurally sound and bred under natural conditions to make up probably the largest and one of the best pure bred full Fleckveih herds in the World today.

The stud has never been promoted through the show or auction system with all progeny being sold privately. However in more recent times demand has not only been from Canadians, but from leading breeders from throughout America.

We have been privileged to be given the N.Z. Agency for the herds leading sire "Bar None Shareholder" whose semen will be available this season.

We next inspected the well known Nu Horizon herd owned in partnership by the Graf family and Bob and Doreen Lukens who many New Zealanders have met. They are the owners of "Heartbeat of America" and NUH "Royal Reserve" whose semen is also available in N.Z.

Simmental visits over and back to Calgary for more stampeding and cattle shows, joining The Royal Agricultural Society of the Agricultural Society of the Commonwealth for their week long World Conference on "Livestock from a Global Perspective" at which I was asked to give a paper on "Stockmanship". This I did taking the opportunity to promote the skills and successes of the N.Z. livestock farmer and the great contribution they make to the N.Z. economy.

## **Elders PASTORAL** **FIRST ON THE FARM**

Elders Pastoral N.Z. Limited is proud to be able to offer for sale in New Zealand embryos from the internationally famous Morven Farms herd. The genetics offered are out of four of the very best cows from Morven's outstanding herd. These embryos are all from full blood cows with tremendous depth of proven breeding.

### **Donor Cows**

AF Ms Enchanted 1086W (1174111)	Solid Red
AF Sabina Rose 093Y (1359990)	Yellow, super full sibling to Zeus
AF 045Y (1335330)	Solid Red
AF Honeysuckle Rose 025Y (1329014)	Solid Red, full sibling to Tysons Corner

All these embryos are sired by FF Fast Forward 40Y (1419608), the most talked about young sire in North America. High Ridge Farms of Marshville, North Carolina, have purchased a one-half ownership in FF Fast Forward for US\$60,000. Fast Forward is homozygous polled and his calves are displaying tremendous depth of rib, muscle, cleanliness and stylish profiles. He is a dominant sire that stamps his progeny with that indefinable quality sought by all breeders.

Elders Pastoral N.Z. Limited, in conjunction with Premier Genetics N.Z. Limited, also has available semen from the following Morven Farms sires:

FF Fast Forward 40Y	\$120/straw Homozygous polled fullblood
AF Tysons Corner 016Y	\$120/straw Homozygous polled fullblood
AF Zeus 091Y	\$120/straw Dark red polled fullblood
AF Redlands 035Y	\$50/straw Dark red polled fullblood
AF Sebastian 060Y	\$35/straw Red polled pureblood

For further information on this semen or embryos please contact:

**ELDERS PASTORAL N.Z. LIMITED**  
**STUD STOCK DEPARTMENT**  
**P.O. BOX 214**  
**FEILDING**  
**Telephone: 06 - 323 8605**  
**Facsimile: 06 - 323 5538**

After Hours:

Murray Sheppard 06-3580864 or Trevor Melville 06-3550120

# EAT TO MEAT:

## A QUESTION OF ENERGY

Courtesy of The New Zealand Meat Producer

*Feed sheep and cattle grass, and you will end up with meat. For more meat, more quickly, feed better quality pasture, not just more dry matter.*

**T**o grow, an animal needs both energy and protein. Ruminant animals are designed to convert both of these from grass into liveweight, milk and wool. The food they eat is digested through their multi-chamber stomachs, with a range of bacteria extracting some of the goodness for their own use, before it is made available to the animal for growth.

Feed intake needs vary for different stock types at different times of year. An animal being farmed for its meat yield a prime lamb or beef bull-needs the highest quality food available at all times, while other stock such as breeding ewes and cows can be maintained on lesser quality pastures. Young animals need higher quality feed than mature ones.

To increase growth the animal needs to take in more energy and protein, but there is a limit to the amount they can or will want to take in. A rough rule of thumb is that cattle can eat approximately three percent of their body weight as dry matter each day, while sheep can eat up to five percent. The quality of what they eat

determines how fast they will grow. Just like humans on high fibre diets, they can feel full from eating quantities of dry matter with low energy value, and won't put on much weight. As long as they are eating good quantities of high quality pastures, palatable and digestible with the highest possible concentration of energy and proteins, they will grow rapidly.

Pastures which really boost animal growth are leafy and contain a high proportion of clover. Typically they have a higher proportion of metabolizable energy measured in megaJoules (MJME) and protein content, in a form which the animal can absorb more easily.

But the food value of all pastures declines when they are at their peak of growth and forming seeds. The energy in the plant is exhausted by going to seed and less is available to the animal to eat.

"Everyone knows that dry matter intake is important," Tom Fraser from Agresearch's Grassline at Lincoln says. "Perhaps not everyone is aware that it's the quality, more than the quantity, which makes the difference. This is where the management of the pasture - how it is grazed and stocked - comes in."

The highest energy value is in short, growing pasture. This is where management strategies such as rotational grazing and break-feeding come in, to keep pastures topped, either by grazing animals such as breeding ewes when they don't have the immediate need for high nutrition, or by making hay or silage; storing up the energy value to use when other feed is scarce.

The more a pasture produces, the more it needs its fertility replenished. Without a fertiliser maintenance programme, highly productive new pastures won't stay that way.

New pastures may offer greater energy and protein than existing ones, or they may offer other feed benefits such as being active at different times of year, persisting in drought conditions, or being less prone to go to seed (so keeping high energy levels for a longer period of time).

"You need new ways of thinking

about some of these pastures," Tom Fraser says. "Perhaps, if you get four years of persistence out of one, that's a good investment.

"They need managing by grazing and fertilising, to bring out the best in them.

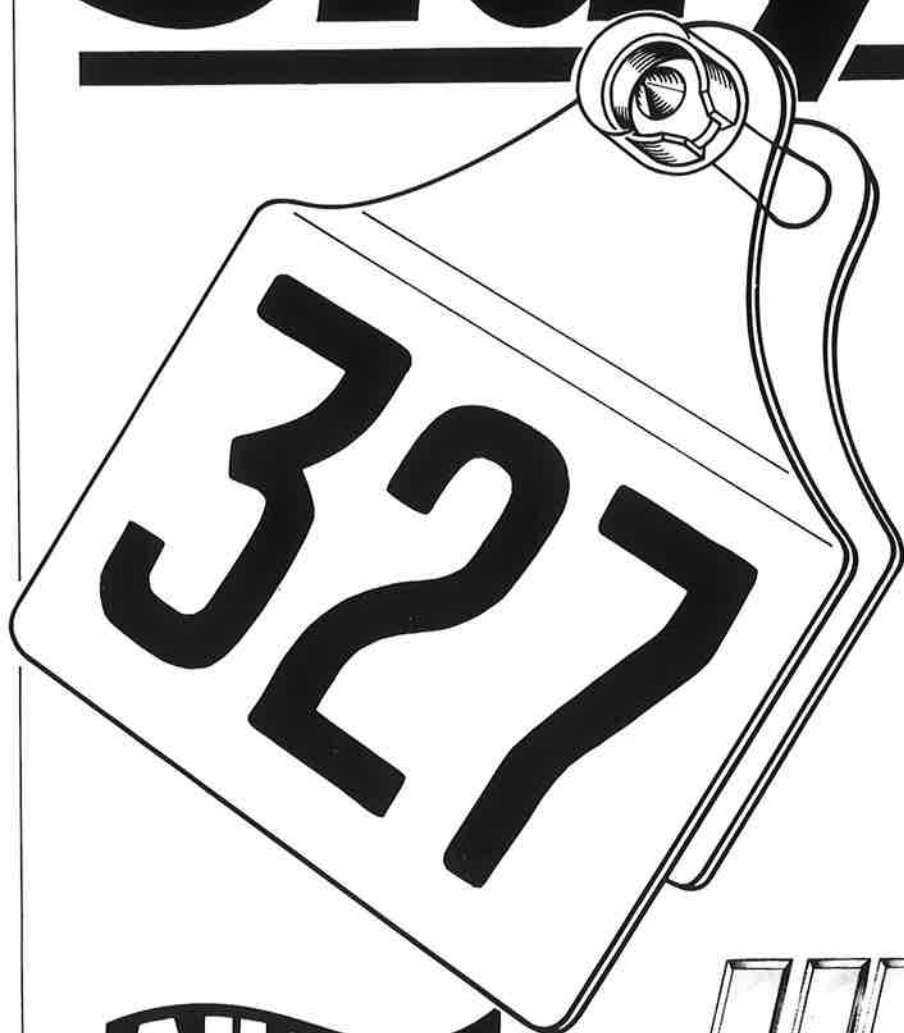
"All pastures are subject to stress, from lack of fertiliser, lack of moisture, attack by pests or overgrazing. They can tolerate one or two at a time, but more will inevitably cause damage.

"You always have to be thinking about renewal. The maximum life for most pastures is around eight years."

### KNOW YOUR MEGAJOULES

Information from Nutrition Consultants, of the animal & Veterinary Sciences group at Lincoln Univeristy (Box 84, Lincoln)		Dry Matter %	Nutritive value/ available energy (MJME/ Kg DM)	C r u d e protein (% DM)
Pasture				
Ryegrass/ white clover dominant	autumn	15	10.8	25
	spring/	15	12.0	22
	short rank	18	10.3	15
Ryegrass/ brownlop dominant	winter	15	11.0	22
	mid- summer	50	7.0	5
Red clover	pre-bloom	18	11	23
	full bloom	25	10	18
Lucerne	immature	15	12	25
	early bloom	20	11	20
	mid- bloom	23	10.5	16
Chicory		25	10.5	16
Hay				
Clover	leafy	87	9.5	16
	stalky	87	7.0	8
Silage				
Pasture	leafy,	18	9.5	14
	direct cut stalky, direct cut	22	8	12
Maize	whole plant	32	10	7
Kiwifruit		20	12	5
Linseed meal		87	12	40

# The Stayayer



No exposed tip, The **covered boss top** neatly solves the animal and handler protection problem.

Exclusive **Rotaclip** mechanism "spring-locks" male and female, dramatically improving tag retention.

**Stronger**, more flexible Male Stem.

**Snag resistant** neck contour.

**Wider body** for identification-at-a-glance.

And room for any sort of coding or recoding system the progressive farmer chooses to employ.

**Allflex**®

**ULTRA**

**The New Standard in Large Animal Eartags**



Private Bag, Palmerston North, NZ. Phone: 06-3567700. Fax: 06-3591380

# .....Internationally

## Beefy formula for a quality reputation

HEREFORDSHIRE farming business Bowley Court Farms has earned a reputation as a regular seller of high quality heavyweights in the finished cattle ring at the local market in Ludlow.

Heavyweight bullocks from the farm's beef unit were selling, at about £1000 a head last spring. And it seems the secret to the success of these 800kg steers is extensive rearing on low-cost by-product feed and the use of the Simmental as both a crossing and suckler cow sire.

Michael and Jonathan Mercer's Bowley Court Farms, Bodenham, extends to 1215ha (3000 acres) in all, and the 280-cow spring-calving suckler herd is run alongside 607ha (1500 acres) of combineable crops, 202ha (500 acres) of potatoes and 24ha (60 acres) of daffodil bulbs.

The Simmental has been chosen not

edge on temperament and milk yield. Unit manager Richard Bell counters arguments about the maintenance costs of the larger Simmental cow by highlighting their ability to perform on a no concentrate system, and stresses that a big cow is needed to produce a big bullock. The barren Simmental cow is also worth at least £200 more than a traditional Angus or Hereford cross.

The cows are housed overwinter on a ration of silage and waste vegetables, and calving begins indoors in early March. Cows and calves are turned out as the weather allows, and creep feed is available from May onwards to minimise growth checks when grass is less plentiful in mid summer.

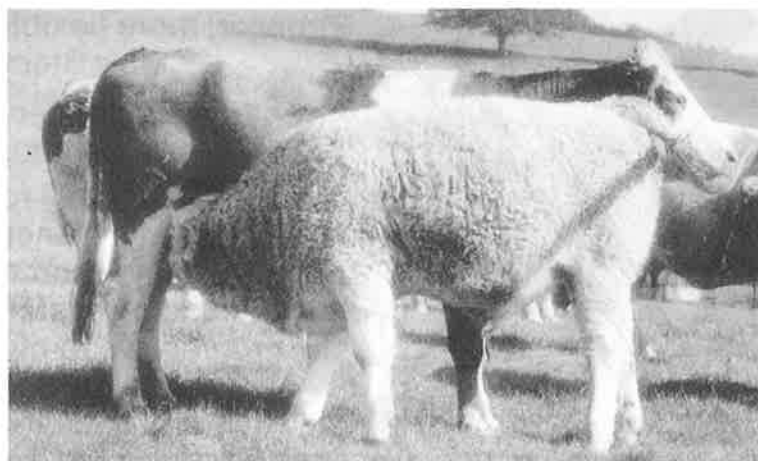
The calves are weaned in early October, and are brought inside to a store ration of silage and, about 1.8kg (4lb) of bought-in concentrate. Heifer calves selected as replacements are fed extra concentrate to get them to bulling weight at 15 months old. Surplus heifers are sold as yearlings and are increasingly being

autumn a further 200 stores are bought-in, and these will remain in yards with the suckled steers until they are finished at about 800kg in the spring or early summer.

When it comes to choosing crossing sires, Michael Mercer, who also runs a small Simmental herd, puts conformation and carcass quality ahead of weight gain figures.

Cattle from the unit regularly top the market, as buyers have come to appreciate the better conformation and extra lean meat yield from the Simmental steer. Mr Mercer reckons many producers of this type of animal lose out because they are sold as other crosses, and he feels more could be done to identify these prime quality Simmental crosses.

*Courtesy of the Farmers Weekly, England.*



One of Bowley Courts three-quarter-bred Simmental suckler cows. The Simmental cross has proved an ideal suckler cow for its low input system.

only for its high growth potential but also its ability to perform on a low-input system and grow on to a heavy weight without becoming over fat. Over two thirds of the herd are Simmental crosses, with a number of three-quarter-bred cows now producing the much sought after fifteen-sixteenths calves with their extra length and hindquarter development. Other Continental crosses have been tried in the suckler herd, but the Simmental has the

bought by other suckler producers on the look out for replacements.

### Second summer

The steer calves spend a second summer at grass and are housed in September to coincide with supplies of waste potatoes being available as part of the finishing ration. The rest of the ration is made up of silage, carrots, beetroot and up to 1.8kg (4lb) bought-in concentrate, depending on the supply of potatoes. Each

## Namibia Centenary

*Following the article that appeared in the Autumn issue of the Simmental News, unfortunately Namibia have had to cancel their planned Centenary Symposium. Details as follows.*

### SIMMENTALER CENTENARY SYMPOSIUM OF NAMIBIA

It is with regret with which we must inform you of the cancellation of our Centenary Symposium.

The cancellation of the symposium was largely necessitated as a result of the serious drought situation which manifested itself over the entire sub continent. It was not possible therefore to prepare cattle for the exhibition and sale in May of this year. The drought conditions have also affected the response from South Africa and other neighbouring countries.

With the cancellation of the symposium, the highlight of the Centenary celebrations will now shift to the Windhoek Agricultural Show to be held in October of this year. At this time the first Namibian National Championships for Simmentaler cattle will also be held.

*Beverley Marley*  
Centenary Secretariat



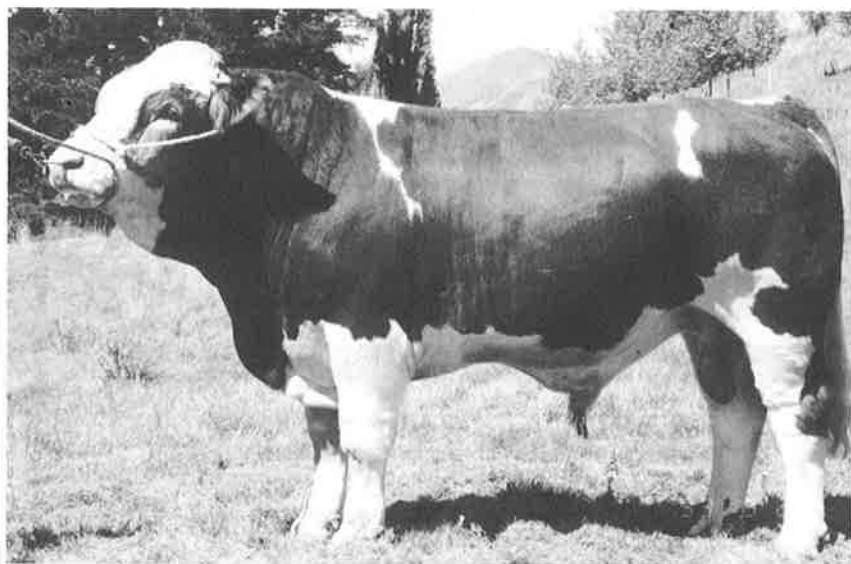
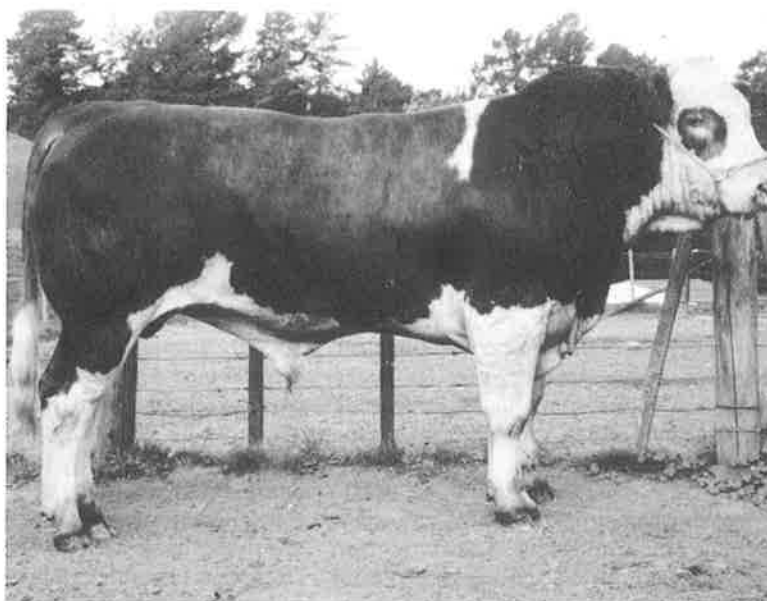
# **Pouriwai Simmentals**

*Presents*

*For sale at the National Bull Sale*

## ***Pouriwai Anzac AA3 (polled)***

*Sired by Grand Desire,  
Interbreed winner at the  
Gisborne Show*



## ***Pouriwai Abel AA96***

*Full brother to  
Pouriwai Zephyr  
(equal top price 1992)*

**Enquiries Welcome**

**Gerald Kemp, Telephone (06) 867 0867**

**Duncan Macpherson, Telephone (06) 867 0821**

# New Capsule to Counter Grass Staggers

Nufarm Ltd is marketing a revolutionary one-dose, slow release magnesium capsule to aid in the prevention of grass staggers.

Sire Sine has been successfully proven in Australia in both dairy and beef stock where tests have shown the slow release of magnesium to last between nine to twelve weeks. It produces an average daily release of magnesium of 2.3 gms.

This one shot, long lasting dosage is particularly advantageous for hill country beef farmers and for problem cows on the dairy farm.

Nufarm's North Island Development Manager, Mitch Venning, says the major advantage of Sire Sine is that the release of magnesium is all day, every day and it is for an extended period.

It is therefore easier to use than traditional drenching, hay treatment or pasture dusting which are labour intensive as they must be done every day and may involve extra expense in tractor use and hay bales.

Mr Venning sees the capsules as being essential for:

- \* High risk beef or dairy cows with a history of grass staggers or milk fever.
- \* Valuable stud stock.
- \* Beef herds where it is difficult to administer regular doses of magnesium.
- \* Raising the magnesium level of the dairy herd, pre-calving.

"The beauty of Sire Sine is that the capsule corrodes by electrolysis, continuously releasing magnesium into the bloodstream ensuring a regular daily supplement of magnesium," he said.

"This is often the best and simplest way to administer magnesium to help prevent staggers as it gives maximum results with two and a half times the length of release as compared to the smaller bullet type products."

The capsules are particularly valuable in the month post calving when the magnesium levels in spring grass are at their lowest, but the cows' needs are greatest. This overlap creates the ideal conditions for magnesium deficiency in the stock resulting in the killer disease of grass staggers.

Mr. Venning said the larger Sire Sine capsules have a release time of up to twelve weeks which covers the typical calving spread of a herd with a single dosing.

"More importantly, it also covers the crucial first four weeks after calving when cows are most susceptible to grass staggers. The farmer needs a ten week spread of extra magnesium to be sure he is giving all his stock maximum protection."

Mr. Venning stresses that, for dairy cows, the capsules are an extra supplement to other forms of magnesium dosing and are ideal for problem cows with a history of staggers or milk fever.

"I believe Sire Sine is essential for valuable stud animals and beef cows, especially on hill country farmers for the extra protection it can provide.

The capsule consists of two semi-cylindrical magnesium alloy castings hinged together along one side by a rubber moulding. The rubber hinge enables it to be folded together into a cylinder which is then loaded into the applicator.

Nufarm recommends that a head bale be used to ensure ease of insertion. While the capsule can be inserted by one person, it is easier and quicker with two.

Mr. Venning said dairy cows - used to daily farmer contact - are generally much quieter and are easy to dose, but hill country beef cows, less used to being handled will become agitated.

"They become tense because they are not used to being handled, rather than being upset at the actual method of dosing," he said.

The applicator tube is inserted into the cow's mouth over the bank of its tongue and then easily slid in up to the applicator handle. The plunger is then depressed

This drops the capsule into the oesophagus to be swallowed. On entering the stomach, the capsule flips open to its original flat shape which prevents regurgitation.

When all the magnesium has been released, the rubber hinge folds up and is then spat out.

## GRASSLANDS **Puna** SUPERFEED

### ... the High Quality Summer Feed.

**G**rasslands Puna is a broad-leaved perennial from the Chicory family. It has a long taproot which aids its persistence in dry conditions and contributes to the forage's very high mineral content. Puna Chicory is finding favour with many farmers in many varied locations and farm types. It has the capability to produce very high yields of dry matter over the Spring/Summer period and has provided dramatic liveweight gain advantages over traditional pasture.

Available from all leading seed suppliers.

#### SUMMARY OF RECENT TRIAL RESULTS:

##### 1. Lamb Growth Rates — DSIR Lincoln

"Puna 44% better than Rangi Rape."  
"Puna 28% better than good quality pasture."

##### 2. Lamb Liveweight Gain on Puna-based Silage — DSIR Gore

"Puna silage lambs grew 150 grams per head per day."  
"Ryegrass/Huia silage nil growth rate."

##### 3. Friesian Bull Calves Liveweight Gain — DSIR Aorangi

"Puna up to 50% better than pasture."

##### 4. Fawn Weaning Weights — DSIR Aorangi

"The mean advantage of adding Puna to the trial farmlets equated to a 38% increase in weaning weights when compared to the all-grass farmlets.  
(OR, an extra 101 Kg LWG/ha just by adding Puna to the farming system).



## CHALLENGE SEEDS

*Proven through Performance*

# FLY SOUTH THIS WINTER



## UPER IMMENTAL ALES WEEK

**MAY**  
**17th - 21st**

**1** Monday 17th - 11.00 am  
HD Paterson 'Ida Valley'  
and K. Hinton 'KGM'  
Omakau Saleyards  
- 15 Bulls

**2** Monday 17th - 1.30 pm  
D.S. Crossan 'Risingholm'  
Tinwald Saleyards  
- 18 Bulls & 6 Heifers

**3** Tuesday 18th - 1.30 pm  
Levels Farming Co.  
on farm - Levels, Timaru  
- 24 Bulls & 6 Heifers

**2**

**3**

**4**

Wednesday 19th - 10.30am  
W.T. Burgess 'Beresford'  
& L.K. McLay 'Westview'.  
Owaka Saleyards  
- 8 Bulls

**5**

Wednesday 19th - 2.00pm  
L & H McLachlan 'Helensbrook'  
on farm - Milton  
- 18 Bulls

**6**

Thursday 20th - 1.30 pm  
Glenside Simmentals on farm  
Waitahuna  
- 21 Bulls & 2 Heifers

**7**

Friday 21st - 1.00 pm  
Southern District Simmental Club  
Charlton Saleyards - Gore  
- 35 Bulls

**1**

**6**

**5**

**7**

**4**

# 'SOUTHERN SIMMENTAL TOUR'

# Challenges for Beef

*For the third year in a row the U.S.*

*Government has restricted imports of*

*New Zealand beef. Last year,*

*New Zealand's access was restricted to*

*206,700 tonnes. For 1993 it is restricted*

*to 192,800 tonnes.*

**T**his is a reduction of 14,800 tonnes or 7.2% says Meat Board chief executive Warwick Bishop.

"The United States' beef market is the single-most important market for any product that New Zealand exports. It takes three out of every four tonnes of beef exported, and provides more than \$1 billion in fob export income to New Zealand. That is 7% of New Zealand's total export earnings. So anything that happens to change our relationship with this market should be of interest to all New Zealanders, not just to beef companies and farmers," Warwick Bishop said.

"New Zealand's access to

the U.S. beef market is controlled by the U.S. Meat Import Law (MIL). A key component of this law is an annually set trigger level that determines how much beef the U.S. can import from all suppliers in any calendar year (refer to appendix 1). The two largest beef supplying countries are Australia and New Zealand, and they tend to be the targets of U.S. restrictive measures.

"The MIL trigger level for 1993 is 571,200 tonnes - its lowest since 1984. Without this restriction, Meat Board estimates that New Zealand beef export companies could ship about 240,000 tonnes to the U.S. in the 1993 calendar year. The restrictions leave about 50,000 tonnes of predominantly manufacturing-type beef that these companies now have to sell elsewhere.

"The MIL is outmoded. We know it is on the negotiating table as part of the GATT Uruguay Round but this is the

third year in a row that our access has been restrained. Of course we are frustrated. The U.S., itself an efficient beef producer, is shutting out an efficient and unsubsidised supplier of high quality manufacturing beef. This is beef that U.S. customers actively demand. Meanwhile, the U.S. is demanding access for its beef in other Pacific Rim markets," he said.

"The impact of this intervention will disrupt the market for imported beef in the U.S. and, potentially, beef markets in North Asia. As the U.S. is a significant beef supplier to markets in this region, the MIL will therefore backfire on U.S. producers.

"Estimating the potential economic loss to New Zealand is not straightforward. The extent of any distortion will depend on feed availability in New Zealand throughout 1993 and production patterns because of the U.S. action," Warwick Bishop said.

"In 1992 the U.S. beef market closed to imports about mid-November. Beef arrivals after this date were placed in customs bonded storage awaiting the new export year starting January 1.

"The U.S. imported beef market was unsettled in early 1993 while the beef released from bonded storage worked its way through the system. The Meat Board estimates that about 14,000 tonnes of New Zealand beef was carried over into 1993. Australian carry-over stocks ex-

## MEAT BOARD ANNUAL REPORT 1992

### Statistical Section Highlights

*The Meat Board's statistical year ends at 30 September. Its 1992 Annual Report was distributed on 18 February 1993. In this release the 1992 year refers to the year ending at 30 September 1992, unless stated otherwise.*

#### 1. FOB VALUE OF NEW ZEALAND EXPORTS

The export meat industry contributes over one dollar out of every five New Zealand earns overseas. For the year ending 30 June 1992, meat industry products contributed \$3.68

billion in export receipts at fob. This represented 21.4% of total fob earnings of \$17.2 billion for that period.

The \$3.68 billion meat industry total comprises: See Table I

#### 2. TOTAL MEAT PRODUCED FOR EXPORT

Total meat produced for export in 1992 was 993,700 tonnes product weight, up 33,100 tonnes or 3.5% on 1991.

Of this total, 379,900 tonnes was lamb (up 3.9%), 112,700 tonnes was mutton (up 9.5%), 441,200 tonnes was beef (up 0.9%), and 59,900 tonnes



# Exporters

*Courtesy of the New Zealand Society of Farm Management*

ceeded 40,000 tonnes.

"The U.S. market appears to have absorbed this amount of beef and settled down again. This underpins our view that the U.S. needs our high-specification manufacturing beef. U.S. beef importer sentiment will play an important role in shaping market prices during 1993," he said.

"Another significant factor in the beef market outlook for 1993 and beyond, will be the performance of North Asian markets of Japan, South Korea, Taiwan and markets in South East Asia. Australian beef production and export levels will also be important, but this is largely weather dependent.

"It is possible that later this year New Zealand may receive additional access to the voluntary restraint agreement (VRA) level of 192,800 tonnes. This may occur if other supplying countries are unable to meet their estimated level of imports. In such circumstances the U.S. Department of Agriculture reallocates this shortfall amongst those suppliers subject to so-called voluntary restraints," Warwick Bishop said.

## Appendix 1

### U.S. Meat Law 1979 (MIL)

#### - A Summary

The U.S. Department of Agriculture is the primary federal government agency that administers the MIL, though

other agencies are consulted if quotas or voluntary restraints are contemplated.

Before January 1 of each year, USDA calculates an adjusted import quota level based on the historical domestic production level and projections for that year.

The trigger level is calculated at 110 percent of the annual quota and is published with the quota by the Secretary of Agriculture on December 31.

The trigger, which is 10 percent above the quota, is fixed for the year and is the key point of reference for import estimates.

Products covered under the Law are fresh, chilled and frozen beef, veal, mutton and goat and certain processed beef and veal products.

The MIL requires the U.S. President to consider restrictions on imports of meat items covered by the Law if it appears that estimated imports will equal or exceed the trigger level.

The Secretary of Agriculture (USDA) publishes quarterly estimates of the quantity of meat products covered by the MIL that would enter the U.S. during the year without the imposition of limitations under the Law. If the estimate exceeds the "trigger" level, import restraints must be announced.

The USDA determines its quarterly estimates by holding "quarterly consultations" with supplier countries, principally the U.S.'s chief beef suppliers, Australia and New Zealand. These meetings are

used by the USDA to decide how much product it believes will enter the U.S. in the calendar year in question.

The key question U.S. officials ponder is: will the import trigger be breached?

If the U.S. determines that the global trigger level will be reached, so-called voluntary restraint agreements (VRAs), instead of compulsory quotas, can be, and usually are, negotiated with Australia and New Zealand.

VRAs are normally calculated based on shares in the U.S. import market for beef and veal (principally) that countries subject to the MIL supplied during representative years.

## Factors affecting beef access to the U.S. market in 1993 include:

1. The lower trigger level.

2. Continued high cattle production in Australia and New Zealand - the two countries accounting for over 90 percent of the U.S.'s beef imports under the MIL (Canada is excluded from the MIL under the US/Canada Free Trade Agreement).

3. The unpredictability of beef supplies from third countries subject to the MIL, including Central America; they account for the other 10 percent of U.S. beef imports under the MIL.

was other meat [bobby veal, goat, edible offals] (up 9.9%).

## 3. SHIPMENTS BY

### DESTINATION

#### Beef and Veal

Total beef and veal shipments for 1992, at 302,240 tonnes shipped weight, were up by 7788 tonnes or 2.6% on 1991.

New Zealand exporters supplied beef to 66 markets in 1992.

The top 10 beef and veal markets in 1992 took nearly all of New Zealand's shipments. They were: See Table 2

In 1992, the North American region markets of Canada, Mexico and the United States accounted for 83 % of all beef and veal products shipped from New Zealand.

## 4. BEEF AND VEAL

### SLAUGHTERINGS

Steer and heifer slaughterings, at 669,973 in 1992, were down 9,271 on 1991, a 1.4% decrease.

Cow slaughterings, at 594,057 were down 49,052 or 7.6%.

Bull slaughterings, at 489,285 in 1992, were up 16,760 or 3.7% on 1991.

Table 1

Meat	\$3.03 billion
Hides & skins	\$0.39 billion
Crude animal materials*	\$0.21 billion
Tallow	\$0.05 billion
TOTAL	\$3.68 billion

\*Crude animal materials includes sausage casings, tripe, glands, bladders, etc

Table 2

1.	United States	231,120 tonnes	76.5 %
2.	Canada	16,576 tonnes	5.5 %
3.	South Korea	16,345 tonnes	5.4 %
4.	Taiwan	7,641 tonnes	2.5 %
5.	Japan	5,694 tonnes	1.9 %
6.	Hong Kong	3,810 tonnes	1.3 %
7.	Okinawa	3,383 tonnes	1.1 %
8.	Mexico	2,880 tonnes	1.0 %
9.	Tahiti	2,376 tonnes	0.8 %
10.	Singapore	2,500 tonnes	0.8 %
	All other markets	9,915 tonnes	3.2 %
	TOTAL	302,240 tonnes	100 %

# 1993 NATIONAL SIMMENTAL BULL SALE

PALMERSTON NORTH A&P SHOWGROUNDS TUESDAY 22nd JUNE 1993

## EASTBROOKE ALBERT

KINDAR GALAXY - ROTOMARA UTINA

A performance bull. Honey coloured, with great confirmation and character. Evenly fleshed with length and depth in frame and muscle.

EASTBROOKE ALBERT	KINDAR GALAXY	OHU 573/AL12	BAVARIAN (SV)
			OHU 573/BH18
	RANGITIKEI 70/BH3		PEUKAN
			MM 224 70/CF2
	ROTOMARA NICODEMUS		MMB HERMAN
			FLEURS FITCHELL
EASTBROOKE ALBERT	ROTOMARA UTINA	RUSSELEY NOLA	ARGOS P21421 (POLLED)
			SOUTHERN GILLIAN

Born: 19th August, 1991



## EASTBROOKE ANTHONY

TE AUROA JAMIE - RISSINGTON AU797

A stylish free moving, long tall dark brown bull with great temperament and movement.

EASTBROOKE ANTHONY	TE AUROA JAMIE	RISSINGTON AT670	RISSINGTON MAJOR
			RISSINGTON 49/AM145
	CARNOWEN PRIDE		SHERWOOD GRANDEUR
			CARNOWEN MOLLY
	RISSINGTON AU797	RISSINGTON MONITOR	POLLED SBL
			RISSINGTON 49/BH418
EASTBROOKE ANTHONY	RISSINGTON AU797	RISSINGTON BP632	SCOTTISH SENATOR
			RISSINGTON CF235

Born: 13th October, 1991



**FOR FURTHER INFORMATION  
CONTACT RUSSELL SEARS**  
40 Burtt's Road, Wanganui  
Phone (06) 345 8849  
Fax (06) 345 3943



# EASTBROOKE SIMMENTALS

# From the Clubs

## CENTRAL DISTRICTS SIMMENTAL CLUB

Field Day at Jamie and Mathew Proude,  
Herrington Simmentals at Ohakune.

6th March, 1993

Farm size: 500 acres of free draining volcanic soil.

Herd size: 90 cows calving.

Despite drizzly and overcast conditions approximately seventy people turned out to view the Herrington Stud and sample some great Ohakune hospitality at the Proude's home.

After a warm welcome and renewing acquaintances, the day got under way to viewing the rising two year old bulls and a prospective National Sale entry that has also been shown successfully. Guest speaker, Peter McWilliam spoke on bull and sire selection backed up with positive comments and answers to queries by John Absolom.

The cows and calves were very impressive - many onlookers wishing they were in their front paddock! Different A.I. sires have been used, and it was interesting to see their progeny. After viewing the yearling heifers, the crowd headed back to the house for a great lunch, drinks and an informal discussion on the day.

All would like to thank the Proude family for the opportunity to visit the stud farm and the abundant hospitality that lasted to the wee small hours. As a postscript the Proudes would like to thank those who attended, for making it the success it was.



In deep discussion:  
J. Absolom (foremost),  
M. Proude (partly  
obscured), R. Priest,  
H. McIntyre (president of  
the club)

Despite drizzly and overcast conditions approximately seventy people turned out to view the Herrington Stud.

M. Proude (with folder) leading the discussion at Herrington Simmentals



A selection of cows with  
bull calves at Herrington  
Simmentals

## Waikato Club Elects New Officers

**A**t the Annual General Meeting of the Waikato and Districts Simmental Club, two new officers were appointed. They were:

**President:**  
Barry Anderson  
Te Kawa,  
R D 3  
Te Awamutu

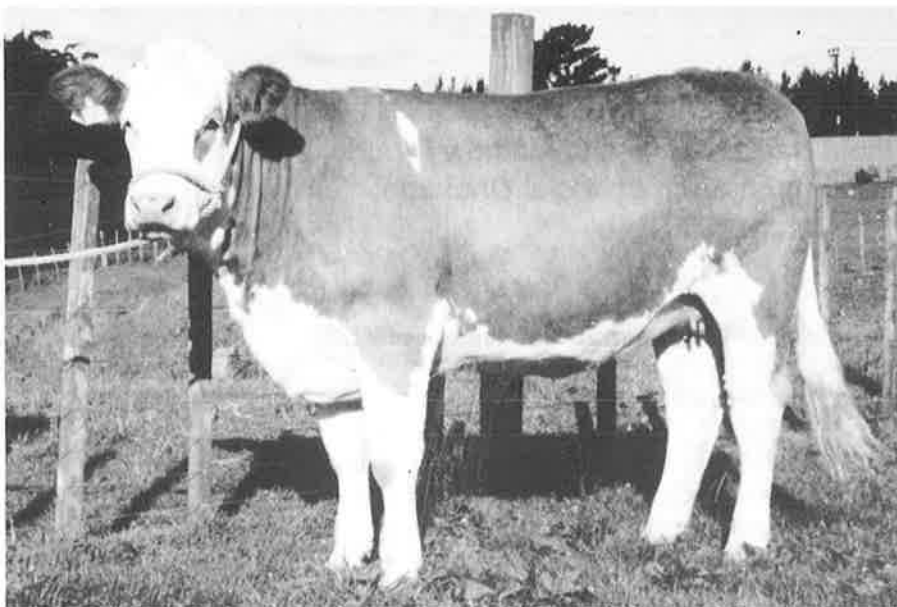
**Secretary/Treasurer:**  
Janet Holland  
Hamurana  
R D 2  
Ngongotahu

## *Production Sale*

A successful sale was held on 30th March, 1993 at Marshalls Simmental Stud, McLaren Falls, Kaimai, Tauranga.

Top price for a cow and calf unit on the day was \$6,800 for a daughter of Emerald Dale Eileen and her polled bull calf purchased by Mr. G.R. Gill Ellerslie and D.M. & G. Trotter, Papakura respectively. A very nice line of rising 2 year old heifers by Emerald Dale Galliano and in-calf to Kindar Galaxy and some to L.B. Jade sold well, the top price of \$3,700 for the show heifer 'Marshall Sal' going to Glen Anthony, Waipukurau.

The second crop of Emerald Dale Galliano's progeny were well sought after, the top price of \$3,300 for a bull calf going to A.B. & O. Torrens, Waihi and the top price of \$1,750 for a heifer calf to C.D. Ellison, Whakatane.



Six recipients carrying progeny of Emerald Dale Eileen sold well with the one sired by Munga Park Frederic bringing the top price of \$3,300 and going to M. & J. Sullivan, Wanganui.

"Marshall Sal" by E D Gallions  
in calf to Kindar Galaxy.  
Lot 60. Glen Anthony - Tony  
Thompson \$3700

**Farmers, if you're looking for Farm Finance  
talk to your ANZ Branch Manager  
about our Farm Finance Package.**

We can assist you with

- farm purchase
- livestock purchase
- seasonal requirements

and can tailor a package to meet your individual needs.

ANZ LOANS ARE SUBJECT TO NORMAL LEGAL AND CREDIT CONDITIONS. A COPY OF THE BANK'S REGISTERED PROSPECTUS MAY BE OBTAINED FROM ANY BRANCH OF THE ANZ BANK.

**ANZ**



# Lynmar Dispersal

Friday, March 12th saw the Female Dispersal of the Lynmar Stud belonging to Kerry and Lynda Nankervis, New Plymouth with a large bench of buyers from all throughout the North Island.

Thirty females sold for an average of \$2,200 (weaners to M.A. cows), top price of \$8,000 for Lynmar Zoe, a 2 year old heifer with many show championships to her credit. Peter and Judy Cowley (Rockvale Stud) are the new owners. The Cowleys were also the volume buyers taking home 7 lots.

Champion Simmental  
MacKenzie Highland  
Show "Willowbrook  
Twinkle" (8 years old)  
and her calf "Brighty"  
held by Tusha Midgley



## EMBRYO TRANSFER



Tight Morula  
Day 5 - 7



Early Blastocyst  
Day 7 - 8



Blastocyst  
Day 7 - 9

**Breed More Offspring From  
Your Most Valuable Animals**

Non - Surgical Technique  
Guaranteed Pregnancy Results  
Embryo Freezing & Thawing  
Professional Experienced Operators  
Reliable Results



Phone Martin Hamer  
03 3770 938 or a/h 03 348 5989  
APPLIED BIOTECHNOLOGY LTD  
26 Clyde Rd, Christchurch.

## PUKETAWA SIMMENTALS

Herd 208

Est. 1972



**Performance Bred  
& Recorded Bulls from a  
Large Herd**

*This year bulls are available from the  
Waikato Simmental Sale (1 July 1993)  
and by private treaty on farm.  
Semen from Puketawa Tallboy &  
Puketawa Yahoo available*

Catalogues and further information available from:-

J B Scott,  
Puketawa Simmentals,  
Roberts Road, R D 2 Cambridge.  
Te. (07) 827 2864 Fax. (07) 827 2977



**NEW ZEALAND**  
- For the Di

# Abon Park



*A top line of commercial bulls reared on  
the hills of the Peninsula and guaranteed  
to shift anywhere*

*Despite a consistent demand  
throughout the season we still have  
a good selection of mixed age cows  
and heifers available for sale*



**VISITORS MOST WELCOME AT ALL TIMES - FURTHER  
DAVID CARTER, MANOR FARM, No 1 R.D. LYTTELTON, C  
STUD MANAGER : JOHN (VANZO)**

**S PREMIER HERD**  
**erning Buyer -**

**Simmentals**



*For those who want the best.  
A quality selection of embryos  
and recipients are available for sale*



*Semen available from  
our proven herd sire,  
Avon Park East Dome*

**INFORMATION & ENQUIRIES PLEASE CONTACT -**  
**RISTCHURCH. PHONE (03) 329 9731, FAX (03) 329 9001**  
**N BUREN. PHONE (03) 329 4798**

# A Visit to the Simmental in the District

Werner H. Gut.

**M**y best Swiss friend moved a few years ago to Brazil, where he brought a small farm and started a new life.

To visit him was a good enough excuse for us to take off to South America for a few weeks. We flew from Auckland to Buenos Ayres where we spent a few days, next stop was Igazu, which is on the borders of Paraguay, Brazil and Argentine. The waterfalls of Igazu on the Para river are out of this world with immense amounts of red tinged water thundering over cliffs.

From there we headed for Florianopolis, to meet my friend. If you fly in Brazil you never know where you are going to end up next, as the main aim seems to be to fill the plane, and in them doing that, you end up getting flown all over the place, and of course miss your connections. So we had a lot of problems getting to Florianopolis, but that is another story.

My friend and his Brazilian wife live about 10 km away from a small place about the size of Kaponga, called Paulo Lopez, which serves a community of small farmers, with small herds of cattle.

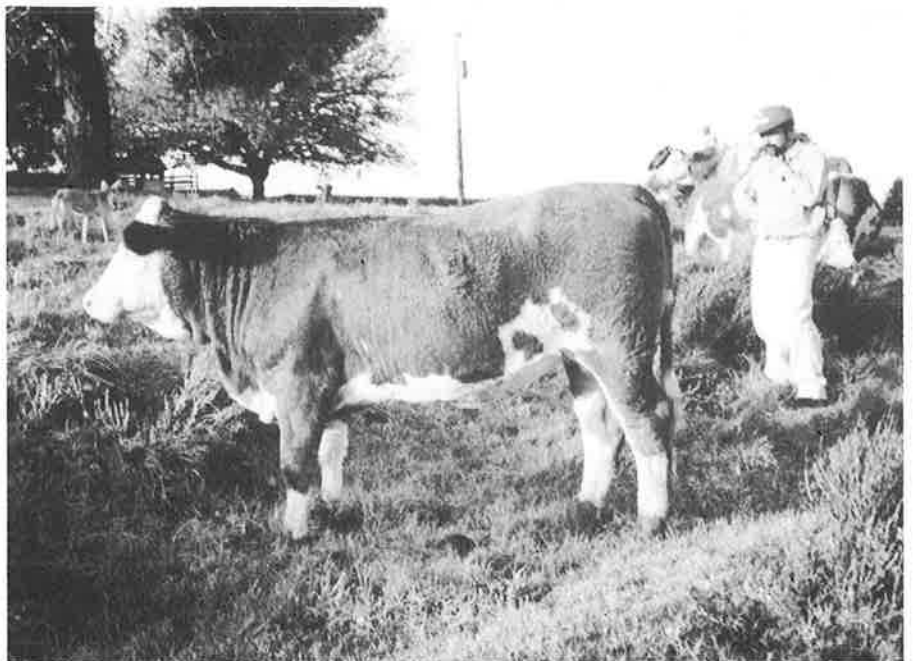
The cattle are mainly of the Brazilian *bos indicus* breed, called Nellory and they cross them with European breeds. The climate is sub tropical, pure European breeds can exist there, but they have quite a few problems, mainly with parasites which cross breeds don't have.

During our stay there we found an advertisement in a farming paper of a Simmental stud in Lages about four hours away. My friend speaks Portuguese and Swiss, his wife, Vittoria, only speaks Portuguese, my wife, Norma, only English, so we had some very complicated conversations. Anyhow Vittoria and myself went to the priest in Paolo Lopez, who had the nearest phone. The second half of the breeders name looked German, so the idea was, should they also speak German, I would be of some use, but was not the case.

We were told that as everything was flooded, they could not guarantee that we could see the farms. We took off anyway

in my friends car. About halfway to Lages, on the main road, there appeared a sign, which said, "You will be proceeding at your own risk", we were very lucky to make it. The story was that a few years

Brazilian type Volkswagon 2 wheel drive, over sometimes very good metal roads that turned into mudholes in the hollows. We learnt to have a great respect for that little car and its driver. Further on the



Jose' Carlos Ramos and one of his prized Swiss bred heifers (embryo)

ago work began to improve the road, but the finances ran out and everything was just left.

We found a hotel in the middle of the night and next morning we contacted our Simmental stud contact. We were picked up and taken to his city apartment by Mr Jose Carlos Ramos, where we met his very nice wife. It took my bundle of photos of Simmental bulls, cows and calves to set the ball rolling, suddenly it was all go.

After breeders were contacted we had to see the farm and the cattle and that was the start of two most interesting and enjoyable days.

Mr Jose Carlos Ramos is a grass and animal nutrition scientist at the agricultural research station in Lages. The physical running of his farm is done by "gauchos". It is all grass farming and all the work is done on horseback, we saw some beautiful horses. To get to the fazenda (farm) we had to drive for two hours in a

---

*The Simmental bulls are very good business, and are in big demand for cross breeding, they sell again for approximately the same price as what we get in New Zealand and the supply can hardly keep up with the demand.*

---



# Breeders of Lagas, of St Caterina, Brazil

way we met big herds of steers, being driven to be sold or slaughtered, most of those cattle seemed 4 - 5 years old. Their value in money were about the same as in New Zealand, at the point where they were used. With a very poor rail service, and poor roads, it must be very difficult for some farmers to get their cattle to market.

Norma and I were in the car with Mr and Mrs Ramos, they spoke about as many words of English as I speak Portuguese, 100 - 150 words, so our conversation, while non stop was a bit difficult. I would have liked to ask much more. Mr and Mrs. Ramos have a small herd of purebred cattle, mainly of Swiss blood including a few very good heifers and bulls from embryos bought in Switzerland.

On the second day Norma and I went even further off the main road, in the same little Volkswagen, we were picked up again by Mr. Ramos, he had his friend with him, Mr. Joas Carlos Andrade whose property we were going to see. Mr. Andrade is a full time farmer, but also lives in the city with his wife and family, reason being that their children can attend School. Gauchos live on the

for the Simmentals. The oats are fed after the cows calve, again only for the Simmental cows. The Simmental bulls are very good business, and are in big de-

Ellett ryegrass and Mako clover. It was Winter while we were there and there seemed to be plenty of roughage on the farms, but I was told that it was of little

Clubrooms of  
the Simmental  
Cattle  
Breeders in  
Lages, Brazil



mand for cross breeding, they sell again for approximately the same price as what we get in New Zealand and the supply can hardly keep up with the demand. In the huge cattle country they are crossed with the Nellory, the aim of the breeders more in tropical areas is to have an animal 5/8ths - 3/8ths Simmental-Nellory. These animals are known as "Simbrasil" and I was told that this became the most popu-

feed value and that the average beast lost about 100 kg weight during the winter months. Winter in Lages was about the same as February - March in New Zealand with plenty of rain, but the kind of grasses which would be able to grow there would not survive the hot summers, which suited the tropical grasses.

Later still we went to the lovely clubhouse of the Simmental Club of Lages and had a small barbeque. Mr. Ramos invited two friends, the husband was a Doctor, his wife a lawyer, they spoke English and with their help Norma talked to the other people that were there about New Zealand. I sat in a corner with Mr. Andrade, who had with him a big bundle of prospects and articles, on Simmental bulls from all over the world. After a few cans of beer we had a big discussion, which went very well, in spite of the fact that we did not have a common language.

Late that night we ended up in a pizza restaurant in town, about twenty five people, we discovered the Portuguese pizza and had a wonderful time. Late at night we said goodbye to our new friends.

The days we spent there were one of the highlights of our month long travels in Brazil, and we hope to go there again one day.



Inside the  
Clubhouse of  
the  
Simmental  
Breeders in  
Lages

farm which is sometimes cut off by swollen streams etc. for many weeks.

After what seems to be hours we arrived at the fazenda. Mr Andrade has 1,500 ha 550 head of cattle, 50 Simmental breeding cows. It is all grass farming apart from small acreages of maize and oats for green feed. Gauchos pick the cobs by hand, and ground them up only

lar breed in the last few years.

Mr. Andrades' fifty breeding cows came from a German base, crossed with semen from Swiss bulls from Switzerland and Canada. It was a very good herd, and the breeder was justly proud of them.

Later that afternoon we made a quick visit to the research station. Amongst the plots of new grasses I found New Zealand

# Herdsperson

## Junior

### *Heifer and Herdsperson Show, Invercargill*

The Invercargill event was organised by the Southern Beef Breeders' Group.

Top honours this year went to Dawn Partridge, from Canterbury.

Dawn is a student at Ellesmere College and travelled south for the competition. Her parents run the Laburn Simmental Stud. Dawn entered her first handlers competition at the Royal Show in Christchurch last November.

This year the competition was expanded to include classes for junior dairy cattle handlers organised by the Southland Dairy Breeds Committee.

The champion junior dairy handler was awarded to Colleen Gubb, Riverton. Colleen is a student at Aparima College,



Glenside Anabelle - Dawn Partridge (left) Robot Amanda - Julie Anderson

Colleen is also a Southland and New Zealand representative hockey player.

Twenty young people took part in the beef classes, the youngest being eight-year-old Ross Paterson, of Waikaka.

The youngest of the 18 entrants in the dairy section was seven-year-old Jacinta Duffy, of Seaward Downs.

Dairy section judges were, Alton Dickie and Alan Hamilton.

Mr Dickie said they had judged the

heifers on the way on which their handlers had prepared and paraded them.

The handlers had been judged on how well they themselves were presented and how they managed the animals in the show ring.

This year the beef classes were judged by Eoin McKerchar, of Cave in Canterbury, and Ian Johnston, of Kaiapoi.

Mr Johnston said the standard of herdsmanhip had been excellent.

### *Junior Herdsperson - Royal Show, Christchurch, November 1992*

The Christchurch Royal Show was the venue for the 4th New Zealand Simmental Society sponsored Junior Herdsperson event. This prestigious event was competed for by 26 Junior Herdspersons between the ages of 12 and 21. They came from as far north as Rotorua and Winton in the south.

The winners of this years competition Nathan Couper, Apiti, and Grace Holland, Rotorua, will travel to and compete at the South Australian Junior All Breeds Heifer Show in Adelaide during July.

It is interesting to note that both this years winners travelled from the North Island to compete, which suggests this

competition is being recognised as one of the major events on the Royal Show schedule.

Dawn Partridge, Leeston, won the Junior section of the event and recieved a show halter for her efforts.

The standard of presentation of both the herdsperson and their animals has improved markedley over the four years that the competition has been running. The Simmental Society hopes that this improvement continues and is reflected throughout the whole cattle showing scene.

A new angle to the event which is developing is aimed at encouraging Junior Herdspeople from their local show

handler events around New Zealand to come forward and also compete at the Royal Show event. This augurs well for the ongoing success of our sponsored event.

Mention must be made of the effort our friends in south Auatralia are making to ensure our winners each year are welcome and well hosted.

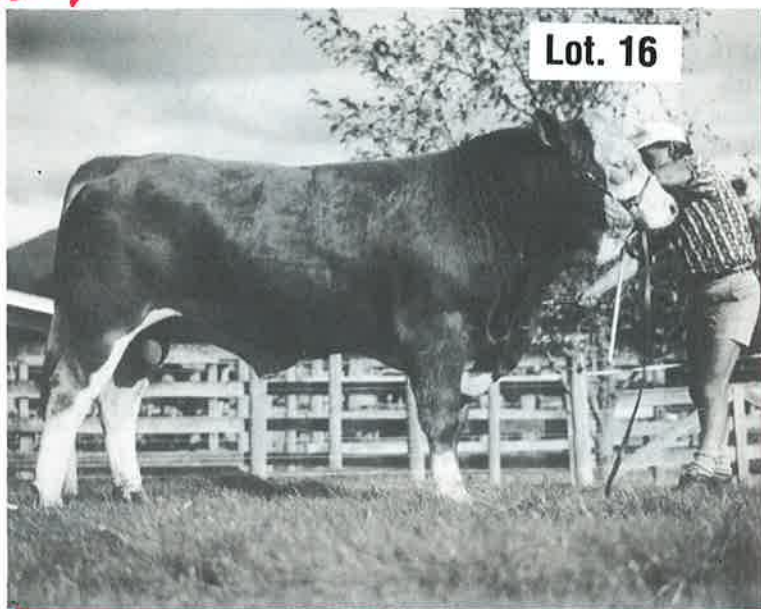
It has indeed been our pleasure to have the winners of their handler competitions here in New Zealand and learn from their experience and approach to showing.

We look forward to our next Junior Herdsperson competition at the Hastings Royal Show in 1994.



## **MONEYMORE SIMMENTALS**

*'Let your programme alight' !*



*with*

**"Moneymore Bush-Fire AA1"**

(Lot.16 1993 National Sale)

## **7th Annual Sale**

**Friday 2 July 1993**

**at the sales complex Main Road South, Wakefield**

***Selling:***

- 28 Rising 2 y.o. Angus
- 12 Rising 2 y.o. Simmental
- 10 Rising 2 y.o. Hereford



Group  
Breedplan

Recorded  
Scanned

**Craig Martin Tel. 03 544 2788 Richard Martin Tel. 03 541 8559**  
**8 Clifford Road, Wakefield**  
**Nelson**  
**Fax. 03 541 8308**

## Junior Herdsperson Proves Popular Event at the MacKenzie Highland Show

# Junior Herdsperson

*The Junior Herdsperson Competition, a first for the MacKenzie Highland Show was a very popular event.*

The Judge, Mr. Eoin McKerchar said "It was pleasing as for a lot of them it was the first time they had led their animals in public and the standard was extremely high".

The competition attracted 18 entries. Rowlands of Christchurch sponsored the competition with a gift voucher for a pair of Moleskins.

The winners were :

1st Miss Penelope Gray

2nd Paul Partridge

3rd Dawn Partridge

4th Nathan Hellyer



Miss Penelope Gray winner Junior Herdsperson Competition, MacKenzie Highland Show

## Waingaro Simmentals

Waingaro Simmentals are offering 3 bulls at the Central South Island Bull Sale at Temuka

Hill Bred Cattle  
By the top ranked sire from the Glen Anthony Studs 1988 calving

**For further information please contact  
Craig or Don Graham  
Waingaro Simmental Stud  
Parnassus RD North Canterbury  
Tel. 03 319 2809**

**We wish all Simmental  
Breeders a very successful  
1993 selling season**



## REID FARMERS LIMITED

**Otago and Eastern Southlands  
Rural Servicing Company  
SELLING STUD STOCK?**

**Whether It's in the paddock  
multi-vendor breed sales  
or at the "Shows"**

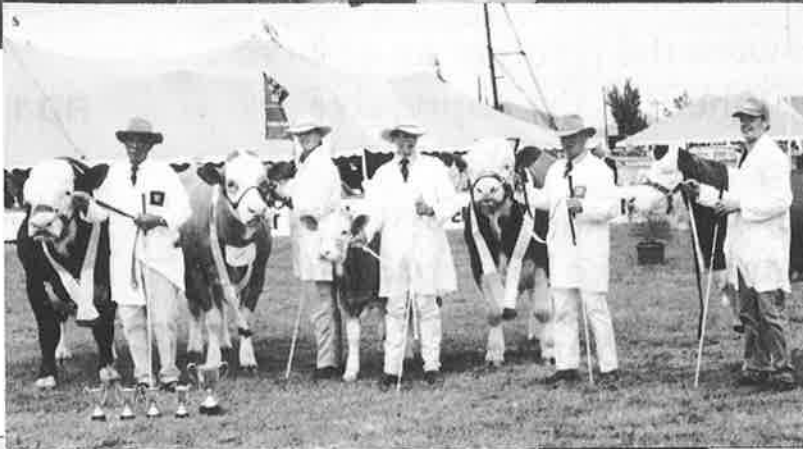
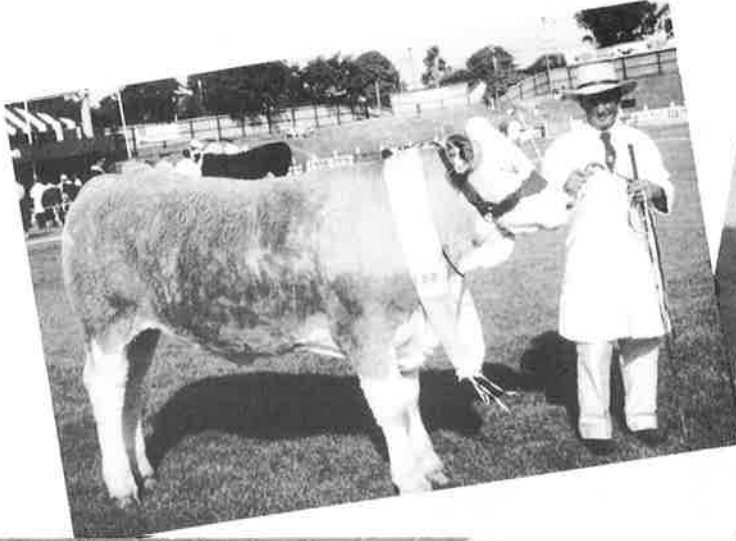
**Reid Farmers Ltd. is there working for you**

**Studstock Officer  
Mr Roger Keach  
(03) 418 1333 a/h (03) 418 2582  
Mobile 025 336 443**

**Head Auctioneer  
Mr Alan Eason  
a/h (03) 489 8825**



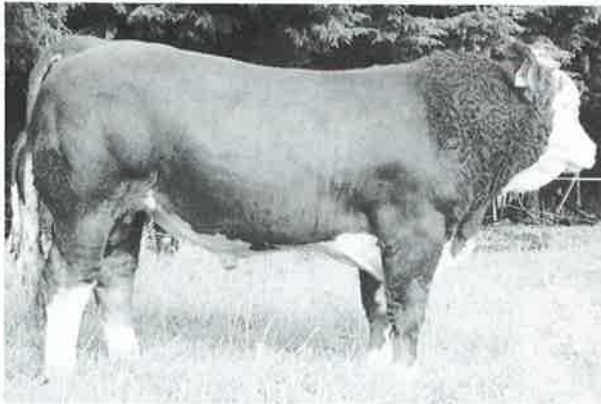
# Royal Show '92



# HERRINGTON SIMMENTALS

## 1993 Bull Power Our National Sale Selection

**Herrington Alpine**



**Sire:- Munga Park Frederic**

**Herrington Audi**



**Dam:- Rissington Bar 5 Fiona**

These two bulls were the result of an embryo flush. Both have inherited the impressive muscle pattern from their well known sire.

They both have exceptional bone structure.

Both sides of their pedigree being proven in the show ring; Alpine has been shown at the 1992 Hawkes Bay & Palmerston North shows with great success. Alpine is dark red with good muscle and length. Audi is dark red, an alert bull, very free moving who carries his weight on very sound feet.

These bulls have been used in the Herrington Stud. Alpine or Audi are available for pre-sale inspection.

**20 Top pure Simmental bulls to be sold privately.**

**RD 1 Lakes Rd**

**Ohakune**

*Jamie Proude*

**06-385 4789**

*Mathew Proude*

**06-385 4048**



# Make pelvic area a heifer selection tool

*Courtesy Australian Farm Journal*

**C**ALVING difficulty, a major problem in heifers in the United States is being countered by adoption of pelvic measurements in heifers and bulls. By culling heifers with inadequate pelvic area and joining the rest to moderate growth, good pelvic area bulls, dystocia is being significantly reduced.

Visiting University of Nebraska beef cattle specialist, Gene Deutscher, told a Ballarat Beef Improvement Association conference that dystocia in the US was causing about 3.5 million calf deaths costing \$380 million year.

To counter the losses, cattlemen reversing the trend towards are larger cattle, and they are developing pelvic specifications which to base decisions on joining. Threshold ratios for pelvic area and estimated calf weights have been determined, and heifers are joined accordingly.

Dr Deutscher said US cattlemen were not prepared to let heifers die from dystocia and even on extensive ranches supervised calving and gave assistance when required.

"A new-born calf is worth \$200 and the heifer much more than that, so every effort is made to avoid deaths," he said.

While there were a whole range of factors affecting dystocia, he said, they could be simplified down to two: the heifer's calving ability and the foetus size and shape.

He said too many cattlemen had blamed dystocia on only the second factor and had not been prepared to look at

their heifers' ability to calve. "Our analysis of hundreds of heifer births show the problems only arise when the pelvic size is below average and birth weight above average," he said. "The problem is a disproportion between pelvic size and birth weight, not just birth weight. Because of this cattlemen should know heifer pelvic size before joining."

Dr Deutscher said the heifer's pelvis grows constantly to 24 months of age. So, by measuring pelvic area at 9-12 months it is possible to predict the area at 24 months. In line with this he developed a pelvic area birth weight ratio and compared the ratios in hundreds of calving heifers.

He found that when calf weight was measured in pounds and pelvic area in square centimetres, unassisted heifers had an average ratio of 2.2 while cesarean birth heifers ratio was 1.7 (see Figure 1).

"We now work on a ratio of 2.1 as the threshold for dystocia and have found this is 80% reliable," he said.

When birth weight is measured in kilograms the pelvic area threshold is 4.6. Dr Deutscher said when the yearling pelvic area threshold, 4.6, is divided into the pelvic area of a heifer an estimated safe birth weight for the calf can be determined.

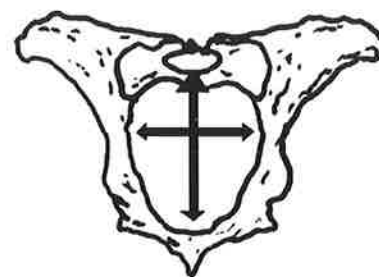
This means that a yearling heifer with a 140cm<sup>2</sup> pelvic area should not be expected to deliver a calf greater than 30kg; on the other hand a heifer with a 180cm<sup>2</sup> pelvic area could deliver a calf around 39kg (see Table 1).

"US cattlemen are now making these

calculations to determine before joining what sort of bull to use over heifers. If there is doubt about a heifers ability to

**Figure 1**

Vertical and horizontal measurements are obtained to determine pelvic area.



calve unassisted, many now don't join them preferring to put them straight into feedlots for finishing," he said.

Dr Deutscher said another approach to reduce dystocia was genetically by using bulls with large pelvic area which, in turn, pass on the characteristic to their daughters. He said the heritability of pelvic size was 61% which was higher than growth rate traits, which meant the trait would respond quickly to selection.

He examined 3000 bulls of similar weight and age and found there was little difference between breeds in pelvic area. But there were marked difference between individual animals, up to 43cm<sup>2</sup>.

In the US, trials have shown the average pelvic area for 500kg yearling bulls (in a feedlot) was 170cm<sup>2</sup>.

**Table 1 Using pelvic measurements to estimate deliverable calf size (birth weight)**

Time of Measurement	Heifer Age months	Heifer Weight Kgs	Pelvic Area cm <sup>2</sup>	Pelvic Area/ Birth Weight ratio	Estimated Calf Birth Weight, kgs
Before breeding	12-13	272	140	4.6	30
			160	4.6	34
			180	4.6	39
Pregnancy exam	18-19	362	180	6.0	30
			200	6.0	33
			220	6.0	37

There is little data in Australia, but the Breedplan validation project has been measuring bull pelvic areas.

Don Lawson's 270kg average weight yearling bulls had a 150cm<sup>2</sup> average, while his 500kg, 20-month old bulls averaged 215cm<sup>2</sup>.

David Rutledge's 420 kg, 14-month old bulls averaged 188cm<sup>2</sup>.

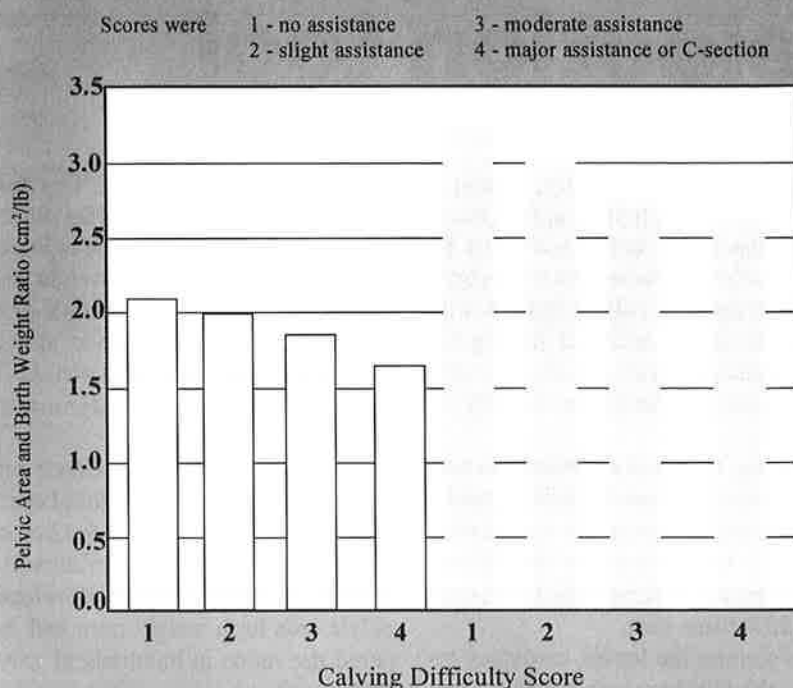
Dr Deutscher was not all that impressed with birth weight Estimated Breeding Values (EBVs) as a tool to avoid dystocia, but said it was more use than knowing the birth weight of the bull.

He said breeders should take a close look as well at the growth rate EBV of bulls considered for use over heifers because there was a strong correlation between birth weight and growth rate.

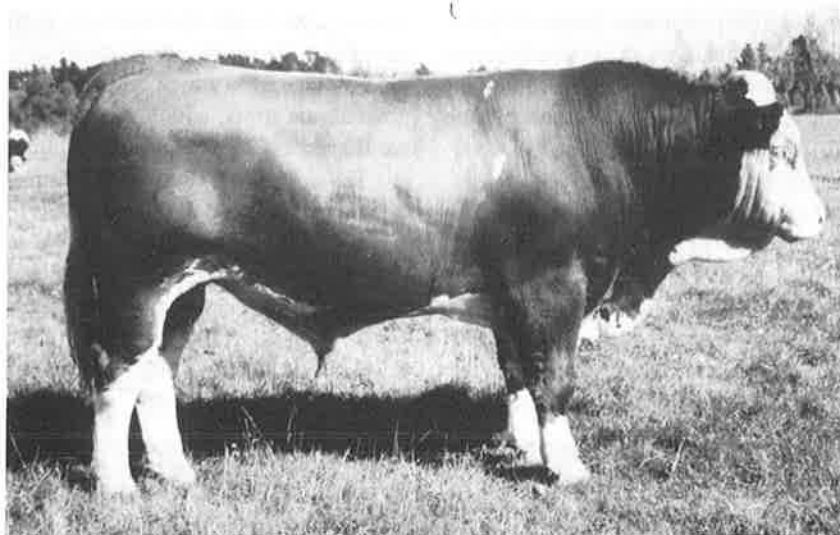
"It is probably best to only use moderate growth rate bulls over heifers. In Angus in the US we advise only using a bull with birth weight EBV, +1 or less and an average growth rate for the breed," he said. "There is no commonsense in using a low birth weight EBV bull over heifers which also has a high growth rate EBV. Growth begins at conception."

**Figure 2.**

Pelvic area and calf birth weight ratios pre-breeding and pre-calving in relation to calving difficulty scores.



## MAKERIKERI SIMMENTALS offers:



### Makerikeri Agent 1226/AA11E

Born: September 5, 1991  
Sire: Hockenhull Magnum  
Dam: Rissington AN197  
(by Rissington Ueli)  
500d weight 760kg  
Present weight 815kg  
(16/4/93)

We consider this to be the best bull we have bred in the last five years. Agent has excellent feet and legs, an easy calving shoulder and a very quiet temperament. He has been naturally reared (no hard feed). This bull is a great sire prospect.

Agent is for sale at the **Central South Island Simmental Bull Sale** at

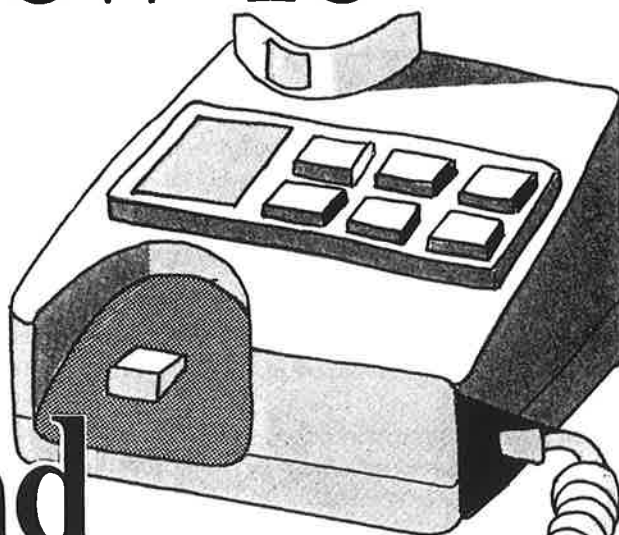
Temuka on June 16, 1993.

*Enquiries and inspection most welcome.*

**Penny and Ian Wright**  
**North Canterbury Phone 03 312-8788**



# Subscribe Now To The Voice of Rural New Zealand The Easy Way...



The New Zealand  
**Farmer**  
The nation's only rural weekly

Phone  
on the  
freephone  
**(0800) 651-652**

## Informing Primary producers and the agricultural industry

**W**eekly the paper provides the authoritative market guide which updates livestock markets, export prices and contains topical agricultural industry news for farmers. Also covered weekly are subjects relating to dairy, sheep, cattle, Stud Stock, Horticulture and Farm Machinery.

## IN YOUR MAILBOX EVERY WEEK

I would like to enrol as a postal subscriber.

- ☐ 1 Year (50 issues) \$80.00\* (inc. GST)  
☐ 2 Years (100 issues) \$160.00\* (inc. GST)

Name: ..... Phone: .....

Address: .....

- ☐ My cheque is enclosed (make payable to NZ Rural Press)  
☐ Please charge my credit card  
☐ Visa ☐ Diners ☐ Bankcard ☐ Amex

No. ....

Signature ..... Expires .....

**or Phone Freephone (0800) 651-652**



POST TO: NZ Rural Press, 540 Great South Road, Greenlane, P.O. Box 4233 Auckland  
 Phone (09) 579-1124, Fax (09) 579-9589

**A** candid observer of the pure bred-industry called the ASA office recently and a rather lengthy discussion took place. This person operates in the real world -, he calls things as he sees them and to some might seem a bit calloused. He lives by a code that says be honest to everyone including yourself. Don't play games, don't look at the business through rose-tinted glasses, and don't try to make something out of nothing. It was his observations about purebred breeders and the nature of the purebred or seedstock business that was of most interest. Three basic ideas were expressed and seemed worthy of sharing with you.

**Image:** Something you have whether you want it or not—acquired over time and difficult to change once it's established. The perception others have of your program, your goals and objectives, the role you're trying to play in the industry, all of these contribute to the elusive concept of image. Some breeders seem to go to great lengths to avoid having or creating an image. They're rather like a chameleon - that interesting reptile that changes colour to match the environment.

These breeders portray one perspective today and another tomorrow. One has to stop and wonder what aspect of the business they're concentrating on. Goals and objectives, if they exist at all, are temporary, short-run, and often not well suited to the resource base available to support the program. Attempting to be something other than what their capabilities indicate they could be leads to frustration and often failure.

**Purpose:** What is it that you're attempting to do as a seedstock producer? Who's your clientele? How do you go about assessing their needs? Does your program offer anything of value - not for today, but four, five, or six years down the road? You can't be on the leading edge by playing catch up. Those who are successful in almost any endeavour are the ones who have the ideas, the perception of

needed changes, and the foresight to implement new concepts.

Do you have the perseverance to stay with something during the trials and tribulations of the testing period? Do you have a sense of realism about the prospects for success or failure? Is there a contingency plan that gives you an early warning of impending disaster so changes can be made soon enough to avoid a crash? Programs without a purpose are rather like goals without objectives. It's fine to have something to strive for - but it's essential to have a plan for doing so. Simply raising cattle with registration papers may be an adequate goal, but what are your objectives - why are you doing this? To improve the genetics in the breed? To offer the unique pedigree composition of your herd to others? To provide superior performing bulls to commercial producers? What's your purpose? Do you even have one?

with the product you're developing and merchandising. They're the seal that's retained long after the warmth of the handshake has cooled or the words of support and indications of purpose have faded. Records imply lots of things - some of which are true only some of the time to the great misfortune of the registered or seedstock business.

My caller had some less than complimentary remarks to make about those who enter the arena of the seedstock producer and fail, either by ignorance to establish and subscribe to these three concepts - image, purpose, and records. Knowledgeable observers can usually sort out those who do from those who don't. Unfortunately, the sorting takes time. In the interim, some get misled and hurt. Everyone suffers from the bad apple in the barrel. The seedstock industry suffers, fellow breeders suffer, and the association suffers.

What can be done about it? Therein lies the problem. We've learned from other experiences that you can't legislate behaviour. You can't regulate, monitor, or supervise breeders to determine their

relative fitness to belong and practice the art of cattle breeding. You can set an example, you can support legitimate programs, you can encourage respect for standards and adherence to regulations. You can demand that others perform according to agreed upon terms and conditions. You can expect organizations to promote these ideals and to insist that members also subscribe and practice the minimum standards that have been adopted.

Finally, you may have to stand up and be counted when things are challenged, when someone has to be held accountable, when leadership is needed or support for basic concepts is needed. You can either be responsible for the good or be held accountable for the bad.

## Operating in the "Real World"

By Earl B. Peterson Past Executive Vice President, American Simmental Association

*Reproduced from the Simmental Shield*

**Records:** The only difference between commercial cattle and registered cattle is the implied warranty that goes with the latter. Registered cattle carry with them a document that represents a guarantee similar to the Good Housekeeping Seal of Approval or the Underwriter's Laboratory label. That document the registration certificate - stands alone as a guarantee that the animal is as represented. Records imply lots of things. They imply accuracy and integrity. They imply a system or program designed to provide necessary information. They imply that since they're being collected, they're also being used.

If records are available and a part of the business, then it's implied they'll be furnished to others on a timely basis. Records are the word of honour that goes

### BROOKLANDS SIMMENTALS

#### 7th Annual Bull Sale

On the property Maharehara, Dannnevirke. Monday 21 June 1993, 12.30pm  
25 Stud & Commercial Bulls (Polled & Horned) Soundness, Fertility guaranteed.

Herd size - 200 cows on Breedplan  
For Private Sale - In calf 3 yr heifers & cows

#### Enquiries & Inspection Welcome

Colin & Catherine Hutching, Tel. 06 374 1802. or Nigel & Lisa Hutching, Tel 06 374 5181

# We call him 'Aye Aye'



## MALVERN DOWNS 1152/AY1

**Sire:** Munga Park Frederic

{	BBA Galant	{	Galant
	Gurin Blizzard LKRP B009		Miss BBA 5H Landmark Maraetotara Helga

**Dam:** Marfrey Wendy  
(PR.P. Douglas)

{	Malvern Downs Leonardo	{	Scottish Senator
	Drum Ermintrude IDW-E1		Congeith Edith Bavarian Knight Hildegard (imp G)

**Born:**  
18-8-89  
**14 months:**  
690 kg.  
**22 months:**  
974 kg.  
**3 1/2 Years:**  
1205 kg.  
**Hip height:**  
160cm (64")  
**Scrotum circum:**  
47cm

With his first crop of 50 calves on the ground at Glenside, "Aye Aye" is proving to be everything we expected him to be. He has stamped his offspring with his growthiness, thickness and tremendous scale. They all show the excellent substance of bone, correctness of structure, tremendous muscling and athletic mobility of their sire, (but with an average birthweight 0.4 kg under the herd average! - excluding heifers).

"Aye Aye" has made his mark in the show ring too. As a yearling he was Supreme Champion Simmental and Champion Junior All-Breeds Bull at the 1991 Christchurch Show, following in the footsteps of his grand-dam Ermintrude who won the Supreme Title in 1982.

"Aye Aye" is a bull with a definite contribution to make in the advancement of the Simmental breed towards the 21st century.

# You can call him 'Yours'

**Semen \$100/per straw (minimum 10)**

Trevor McCorkindale	ph: 0-3-485-9726
Garry McCorkindale	ph/fax: 0-3-485-9727
Ritchie McCorkindale	ph: 0-3-485-9202



## GLENSIDE SIMMENTALS

WAITAHUNA RD3 LAWRENCE OTAGO NZ

# CATTLE SHAPE AND PERFORMANCE

R.E. FREER

## THE SHAPE OF CATTLE AS IT RELATES TO PERFORMANCE

**W**eight is perhaps the most important variable that determines the sale price of beef cattle, consequently weight for age (growth) is the primary selection trait in many breeding programs.

In addition to the economic value of weight, it is of medium heritability (0.4) and can be easily and accurately measured, thereby allowing rapid response to selection.

However the composition of that weight i.e. fat: muscle ratio, is also an important variable in determining the price received / unit weight, and market specifications are based on a weight: fat relationship e.g.

Market	Liveweight Range (Kg)	Preferred Depth @ 12/13 (mm)
Local (vealer)	270-330	4-6
Local/Super-market	330-420	5-8
Export (EEC)	420-600	6-9
Export (Japan)	490-650	8-11

Therefore, growth (weight) alone is not sufficient in defining breeding objectives, rather weight: fat, and to a lesser degree muscle: bone relationship are important in determining the market suitability of progeny. Consequently those relationships need to be considered in selecting potential breeding stock on performance traits.

As objective methods of determining fat: muscle proportions are not readily available for field use, we need to look to specific anatomical relationships to determine individual and comparative composition if composition is to be a selection consideration.

### A quick review of anatomy as it relates to shape

As you well know, the body of a bovine is comprised of 3 basic tissues; bone, muscle and fat; and it is the proportion of these to each other that gives a beast its shape, and determines its yield, thus we can accept that:

#### 1. Bone:

- varies little in total weight and shape in animals of similar size
- bone growth is relative

#### 2. Muscle:

- all cattle have a similar set of muscles predictably located on the skeleton
- muscle development is relative
- the best location to observe muscling is at a point where little or no fat is deposited overlying the muscle

#### 3. Fat:

- fat deposition accelerates as the animal moves towards maturity
- fat accumulates in deposits, namely the brisket, flank and twist, giving the animal a more "blocky" appearance
- the sternum is the ventral aspect of the thoracic and abdominal area, and is located approximately 3/4 of the distance down the tarsus, therefore tissue below this point is largely fat.

In Figure 1 the dotted outline shows an animal of the same skeletal size but fatter. Fat depth at 12/13 rib can be used to predict total fat % of carcass. Therefore fat is the tissue that affects the shape

of the animal most over time, masks the muscle: bone ratio to the untrained eye, and has the greatest influence on the yield of salable meat from the carcass. It is like icing on the cake that smoothes out the profile as it is laid over the outside of the body.

### Simple Field Evaluation of Composition

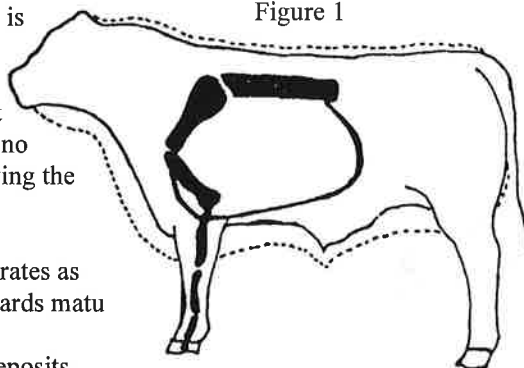
Three options are available:

- A - visual assessment
- B - palpation
- C - frame score

#### A. Visual Assessment

The outline and shape of the steer tells us how well muscled and/or how fat it is.

Figure 1



### Assessment of Fatness

1. Visual - the points of observe

#### a) From the side

i) *Depth of flank* - as the animal fattens the flank becomes deeper and fuller, and with overfatness becomes bumpy.

ii) *Brisket* - remember that the bone in the brisket (sternum) comes down to about 1/4 of the distance down the forearm bone (radius). Almost all the depth of brisket



below this is fat.

iii) *Under the jaw* - as the animal fattens, more fat is deposited under the jaw.

#### b) From the rear

i) *Topline* - angular in an underfinished beast, rounded in a well finished one and square in an overfat animal.

ii) *Tailhead* - depressed or concave on each side of the tailhead in an underfinished beast, and increasing bulges of fat here as the animal fattens.

iii) *Twist* - cut up and wrinkled in an underfinished animal, becoming fuller and deeper as animal fattens.

iv) *Cod* - as animal fattens the cod becomes fuller.

#### c) From the front

Brisket - angular and narrow in an underfinished beast, full, deep and rounded in an overfat animal.

## Assessment of Muscling

### 1. Visual

Muscling is best assessed at places on the animal where there is little or no fat cover overlying the muscle.

#### Places to observe:

i) *The forearm* - a thick bulging forearm indicates greater muscling over the whole body.

ii) *Behind the stifle*, down the back of the hindquarter - with increasing muscling this area becomes rounder and more convex both from the side and the rear. Creases between muscles indicate greater muscling and less fat cover.

iii) *Over the rump* - when greater muscling and less fat cover occur in this area, bulging of the muscle can be observed when the animal is walking.

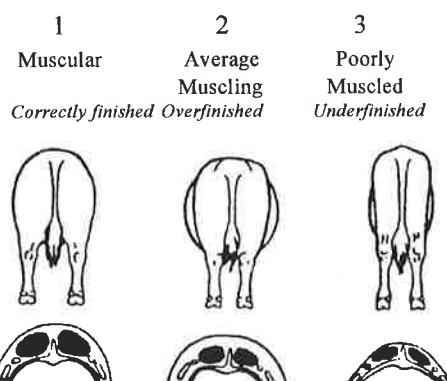
iv) *The stance of the animal* - with increasing muscling, the distance between both hind legs and fore legs becomes wider. Thus a heavily muscled animal stands wide, a lightly muscled one stands narrow.

v) *From the rear* - a rounded topline indicates full muscling. Greater width through the stifle region indicates increased muscling.

## 2. Measurement

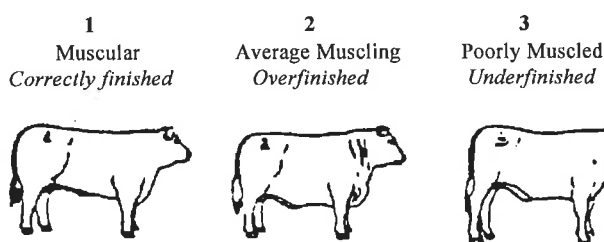
Circumference of forearm - may be used as an objective measure of muscling.

Figure II



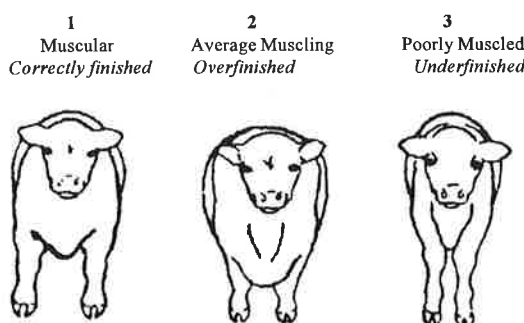
The single most informative angle is from the rear. Width through the stifle region and width of stance indicates good muscle development. Depth in the twist, a smooth/filled tail head and filled cod indicates fat.

Figure III



From the side view muscling can be evaluated at the forearm and along the spine behind the shoulder, whereas fat cover over the loin and ribs can be assessed. Filling of the brisket and flank indicates excessive fat.

Figure IV



From the front, forearm development (should be bulging in a well muscled beast) and width of stance can be used to

evaluate muscle, whereas fullness of the brisket is an indicator of fatness

## B. Palpation

The outline of a beast can be used to evaluate the degree of fatness, particularly relative to muscle, but is not very precise for estimating actual subcutaneous fat deposition.

Palpation, using the tips of the fingers, can be used to accurately estimate subcutaneous fat, particularly at the transverse spinous processes and around the tailhead. What is felt at the other two locations can be expressed as either fat score (0-5) or actual fat thickness (mm) over the longissimus dorsi muscle at the 12/13 rib (where carcass measurements are usually taken).

The fat scores and fat thicknesses are as follows:

**Fat score 0:** 0 mm of fat over rib-eye

The ends of the individual short ribs are sharp and easily distinguished. This score is for emaciated animals e.g. poor conditioned dairy cow.

**Fat score 1:** 0-1 mm fat over rib-eye

The ends of the individual short ribs are sharp and easily distinguished. In well muscled, but under fattened cattle the eye muscle may slightly overhang the ends of the short ribs.

**Fat score 2:** 2-5 mm fat over rib-eye

The ends of the short ribs feel rounded rather than sharp but the individual ends of the transverse processes can still be distinguished.

**Fat score 3:** 6-10 mm fat over rib-eye

The ends of the short ribs are more rounded and need firmer, thumb pressure to be felt. The distinction between individual bones is lost with fat thickness over 7-8 mm.

Some fat cover is becoming apparent around the tailhead.

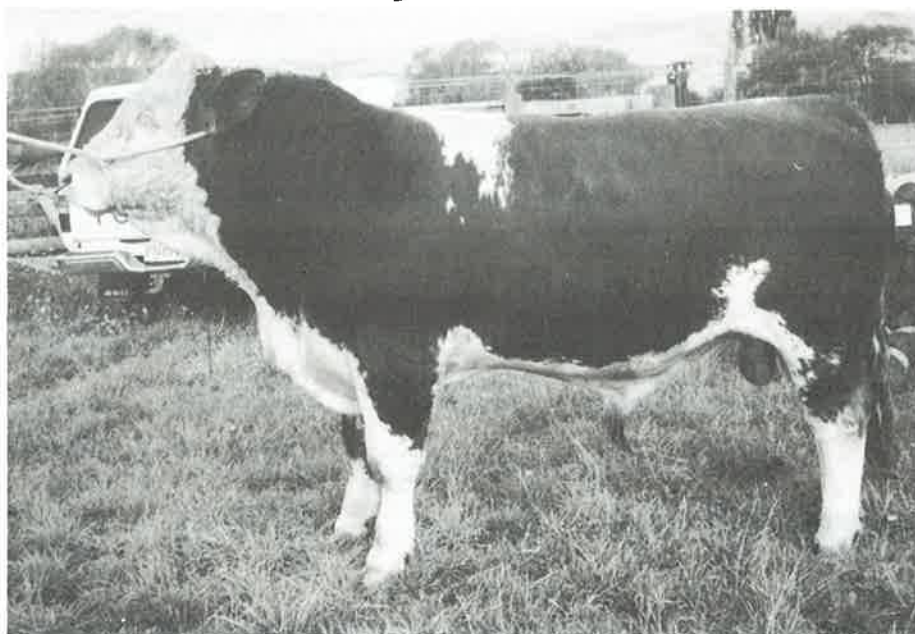
**Fat score 4:** 11-16 mm fat over rib-eye

The ends of the short ribs cannot be felt with fat thicknesses over 12 mm, so beyond this point fatness around the tailhead

# THURSTON SIMMENTAL

**Thurston Simmental features a  
long, tall Sire at the Palmerston  
North BULL WEEK**

**THURSTON ACE AA60**



***This exceptionally well grown  
and well muscled Bull was  
sired by Malvern Downs AY1  
which sold for a record  
\$32,000 at the 1991 National  
Bull Sale. He was Champion  
Simmental Junior yearling  
Bull and Reserve Simmental  
Champion yearling Bull at the  
Royal in Christchurch.***

BBA Galant 12 L CSA 38693  
Waimiro 294/AU159E  
Blizard LKRPB009  
Sire: Malvern Downs 1152/AY1  
Malvern Downs Leonardo 775/AL1  
Malvern Downs Natalie 1152/AN4  
Drum Ermintrude 1DW-E1  
Thurston Ace AA60  
Sundowner Cedric TTW-C16  
Dam: Levels Lotte 3/AL19  
Levels 3/BJ19

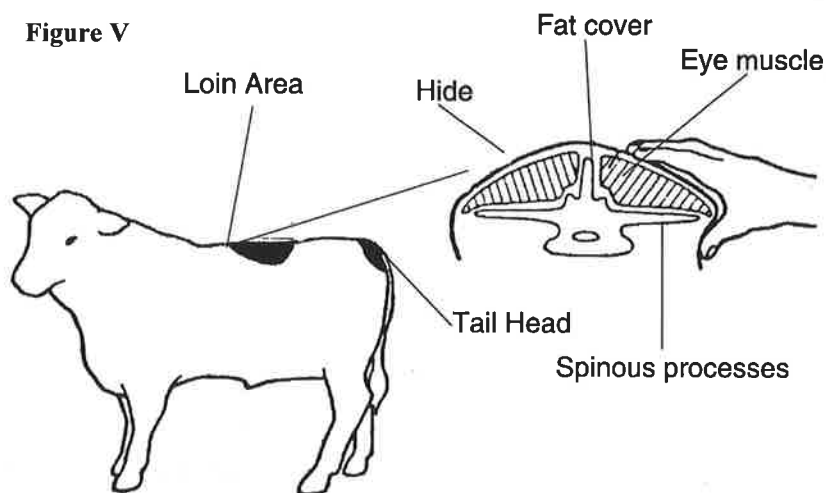
## **For Private Sale**

**An exceptionally well muscled bull Thurston Andrew  
by Munga Park Frederic.**

**Plus three outstanding sires by Malvern Downs AY 1 the record breaking  
\$32,000 bull from the National Sale in 1991**

***For pre-sale information please contact: Andrew and Biddy Ritchie  
Hawkesbury RD 2, Blenheim. Phone (03) 572 9083, Fax (03) 572 9430***

Figure V



has to be used. At 14-16 mm of fat over the rib-eye small bulges of fat are seen or felt around the tailhead.

**Fat score 5:** 17 mm fat or more over rib-eye

Larger bulges of fat around tailhead. Obvious fat deposition in other parts of the body e.g. brisket, flank, twist, cod, etc.

These cattle would produce wastey, overfat carcasses.

With experience, frame scores can be related to a visual "maturity type" (appendix II).

Frame scores are made on a 1 through to 7+ basis, from the smallest to the largest (or the earliest to the latest maturing) types of cattle. They are applicable across all breeds of cattle, however most British Breeds will fall into the 1 to 5 range, whilst the European Breeds generally range from 3 to 7.

The optimum frame type will depend upon the market objective being pursued and the environment e.g.

#### Early Maturing Types

- Frame 2-3. These cattle are small mature size, fatten at light weights (less than 350 kg) and produce light weight local trade cattle.

**Mid Maturity Types** - Frame 4-5. Medium size cattle, having a trimmer and longer outline than the early maturing types. Fattens at a heavier weight (approximately 350-450 kg) and produces light local trade, supermarket steers, yearlings and heavy steers depending on environment.

**Late Maturity Types** - Frame 6-7+. Large framed, long bone, leggy cattle that have a high growth rate, providing yearlings, steers and bullocks with heavier weight and less fat at a given weight than the smaller types.

**REMEMBER:** Frame Score describes type, it does not necessarily infer merit.

#### Summary:

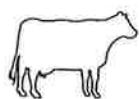
If a cattle producer recognises that he needs to change the fatness or muscling characteristics of his sale progeny, reliable yet simple methods of assessing these characteristics in replacement breeding stock is required for selection.

Frame score, based on the objective measure of an animal's height relative to age have been used by some cattlemen to quantify body size and maturity type in selection of stock.

Palpation, to estimate actual subcutaneous fat cover can be used to select from within a contemporary group those animals that best fit weight:fat market oriented breeding objectives.

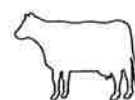
### C. Frame Score

Based on the assumption that skeletal growth is relative to mature size, the height/age relationship of an animal can be categorised using a "frame score".



## NATIONAL BEEF COMPETITION

1993



### ENTER NOW IF YOU ARE FARMING TO:-

- Produce what the consumer wants
- Convert grass to maximum dollars
- Maximise your financial performance

*Don't miss this valuable opportunity to review your management policy for finishing prime steer & heifer beef breeds (bulls not eligible) on hoof & on books and*  
**Win up to \$100.00 per beast (combined classes)**

*See entry form for venue details, weight classes and terms and conditions of entry  
 National finalists will be announced at the Cattlemans dinner, Palmerston North 26/6/93*

**ENTRIES CLOSE: 18 MAY 1993**

Entry Fee:- \$20.00 per animal. No limit to the number of entries per farmer.

Request an entry form from your nearest Processing works, Stock & Station Agents, Simmental Cattle Breeders Society or The Convenor, National Beef Carcase Competition, Box 1702, Palmerston North

Major Sponsors:- The NZ Meat Board, AFFCO NZ Ltd, & Weddel NZ Ltd

# *Brocade Simmentals*



---

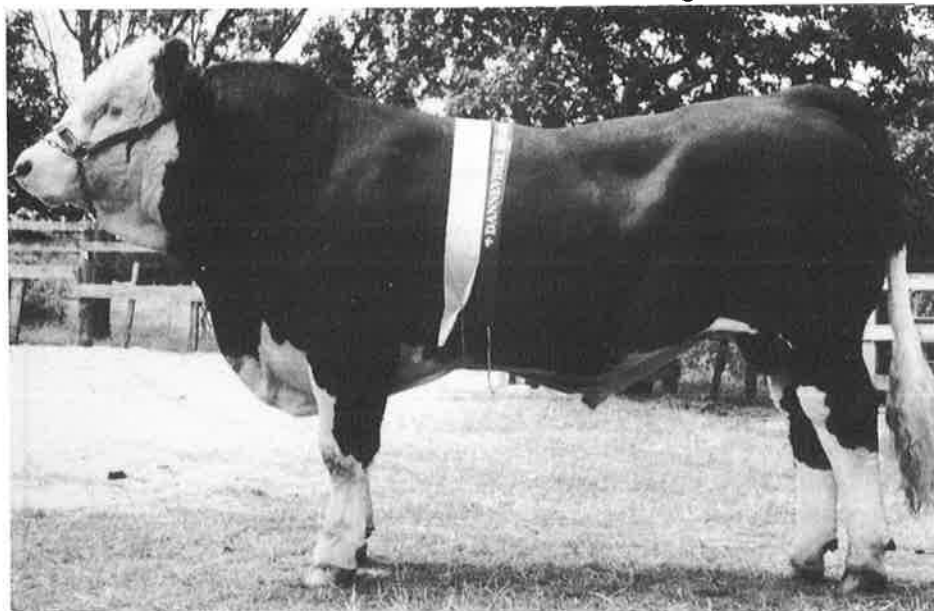
## **6th Annual Bull Sale**

### **3rd June 1993 - 1pm**

---

**20 Bulls**  
**Featuring progeny of Rotomara x Roads**  
**( 1990 National Champion Bull)**

**National Sale Entry**



Dunmore Cossack  
Rotomara x Roads  
Norland Lorraine  
  
K.G.M. Marcus  
Brocade AR24  
Brocade BL7

**Brocade Amos -** Weaning weight 429 Kg  
Yearling weight 610 Kg  
12.4.93 weight 912 Kg

**Visitors and Enquiries Welcomed**  
**H.D. & J.S. McIntyre,**  
**Apiti, No. 1 RD, Feilding**  
**Tel. (06) 328 4845**



# Minutes of the 21st Annual General Meeting of the Simmental Cattle Breeders' Society of New Zealand (Inc).

**Held at the Travel Lodge, Christchurch at 5.45 pm on Thursday, 12 th November, 1992.**

---

## **Present:**

Messrs. Craig Martin, Andrew Ritchie, Bernard Cooper, Hugh McIntyre, Mrs. Penny Scott, Eileen John Hammonds, Tony Banks, Michael Groters, Mark Chamberlain, Colin Patterson, Brian Soutar, Ritchie McCorkindale, Trevor McCorkindale, Garry McCorkindale, Ian & Penny Wright, Murrain Elliott, John Robins, Allan Godsift, Linda & Kerry Nankervis, Peter & Judy Cowley, Brian Barclay, Yvonne Kingsland, Jeanette Smith, Ian Tooley, Alastair Midgley and Ray Stewart.

## **Apologies:**

Apologies were received and sustained from Jim Houlbrooke, Simon Cox, Eddie Conlan, Abe & Sally Aukaha, Start Crosson, Darryl Turton, Jeff & Barbara Bliss, Alan Perry, Peter Sibley, Tony & Lorraine Partridge, Neil & Lorraine Oliver, Vince Daly, Roger Keach, Jamie Proude and Russell Searle.

## **Welcome:**

David Carter (President) welcomed all Society members to the Meeting and especially to the new General Manager, Paula Forde.

## **Confirmation of the previous minutes:**

The minutes of the 20th Annual General Meeting held in Palmerston North on 8th November, 1991, had been circulated in issue number 36 of the Simmental Magazine. It was resolved that these minutes be confirmed as being a true and correct record of the business conducted.

## **President's annual report of Council:**

The President stated that the Annual Report had already been circulated to members with the Notice of Meeting, but as there were a number of events throughout the year which needed to be highlighted, he would prevail on members present and read the report.

The President made a particular point of elaborating on the purchase and commitment to Breedplan. He encouraged all

members, regardless of the size of their herd to continue or to start performance recording for their own benefit and for the benefit to the Simmental Breed as a whole.

It was resolved that the President's report for the year ended 30 June, 1992 be adopted (Carter/Rouse).

## **Annual Accounts:**

The Chairman of the Finance Subcommittee, Rodney Cox, presented the Financial Report and Statement of Account for the year ended 30 June, 1992 as circulated earlier in the year. Mr. Cox further highlighted the benefits that resulted from the change in fee structure introduced during the year. It has allowed administration of the accounts to be streamlined and also enables a better prediction of the Society's income and cash flow, which is particularly important with the financial commitment to the

introduction of Breedplan in 1993.

Andrew Ritchie raised the question of the total cost of Breedplan. Rodney Cox indicated that this information was commercially sensitive, and reassured the meeting that the full council had negotiated a particularly good contract on behalf of the Society and suggested that members monitor annual accounts in future years to attain the information.

Brian Barclay raised the question of why the Society had to pay tax in the past financial year. Brian Soutar answered the question indicating that the Society had made a significant reduction in mortgage owing on the Moorhouse Avenue building. The Society taxation of \$3,525.00 turned a \$1,439.00 cash surplus into the previously mentioned loss.

It was resolved by all members present that the Annual Account and Financial report be received (Cox/Carter).

## **Election of Councillors:**

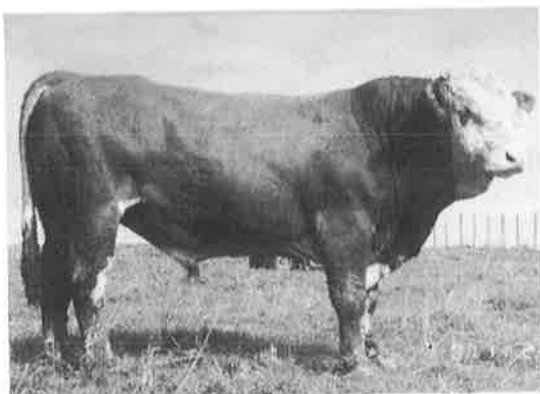
David Carter, the President, indicated that Rodney Cox, Lachie McLachlan and John Scott earlier in the year had been obliged to retire in rotation, but all three had offered themselves for re-election. No further names had been put forward and all three Councillors were re-elected and welcomed back to the Council by David Carter.

## **Committee Annual Reports:**

John Absolom presented the Annual Report of the Sales Committee and indicated that this report had already been circulated to all members. Items covered

# WAI-ITI SIMMENTAL SALE

**TUESDAY 29 JUNE 1993**



**WAI-ITI ZIN ZAN c. 13/8/90**

Kindar Galaxy x D. Cossack II

Used over yearling heifers for 2 years.  
Easy calving & vigorous calves.

## **25 BIG STRONG BULLS**

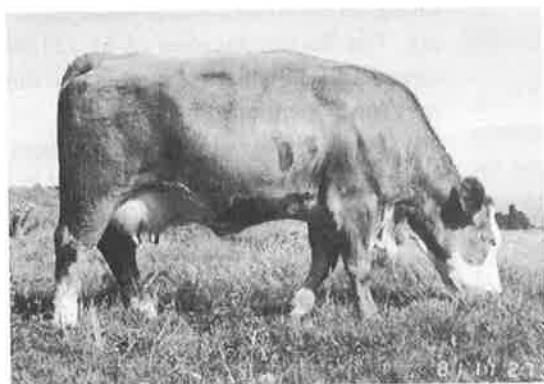
**Several stud sire  
prospects**



**WAI-ITI LOCH LOMOND c. 19/8/92**

Deutsche Loch x Norland Lot

402 Kg at 7 months. A real stud  
sire.  $\frac{3}{4}$  brother to Loch Ness.



**DUNMORE MAHOGNEY (IMP)**

Royal Show winner in Australia & N.Z.  
one of the breeds most celebrated  
matrons. P.T.I.C. Dunmore Cossack II

## **20 ELEGANT FEMALES**

**2 Straws of D.Loch  
semen with each  
lot**



**WAI-ITI UNIQUE 2 c. 4/8/91**

Our top show heifer  
P.T.I.C. Austrian Bubi

**12 of our top rising 2 year heifers  
Embryos & semen for private sale**



**Peter & Sue McWilliam  
Maungaraki Cattle Company  
Gladstone, Masterton  
Tel. 06 372 7724 Fax. 06 372 7770**

in the report indicated an improved clearance of bulls in the 1992 National Bull Sale and the highlight of the 'first' rate presentation and soundness of the bulls. It was resolved by those members present that this Annual Report of the Sales Committee be received (Absolom/McWilliam).

John Scott presented the Annual Report of the Technical Committee and indicated that this report had already been circulated to all members. A summary of the number of herds presently performance recording was covered in the report, but the main focus was the agreement to install Breedplan. John Scott said while many members have a basic understanding of the benefits of Breedplan, the Technical Committee encourages all members to attend Breedplan seminars the Society will be running in the New Year, in conjunction with staff from ABRI in Australia. It was resolved by those members present that this Annual Report of the Technical Committee be received. (Scott/Absolom).

Lachie McLachlan presented the Annual Report from the Promotion Committee and indicated that this report had also been circulated to all members. The Promotion Committee particularly thanked those Society members that had shown stock at all Shows throughout the country during the past year.

Tony Banks enquired if the Certified Simmental campaign was to continue. Lachie McLachlan said that it had been decided by Council to continue with the campaign and highlighted the exposure and profile that had been gained during the past eighteen months. Alastair Midgley commented that the campaign was particularly good for the first six months, but now needed to be looked at to ensure prices and examples being reported were at the top of the market. Don Graham commented that a number of other Breed Societies are envious of the Simmental Report slot and the fact that if we did stop advertising this way, it would quickly be taken up by another Society. It was noted that information printed in the Simmental Report should be closely monitored by the office and all members were encouraged to send in up-to-date sale prices to the office as they occurred.

Area Controllers were thanked for

their role in ensuring Certified Simmental Stickers were displayed at local sales - their hands on approach is still required. It was resolved by those members present that this Annual Report of the Promotion Committee be received. (McLachlan/Absolom).

### **Appointment of Auditor:**

It was reported that Brian Soutar was available for a further term and it was resolved that this appointment be confirmed. (Cox/Carter).

### **Venue for the 1993 Annual General Meeting**

The President, David Carter advised that the practice of holding the A.G.M. and Dinner in conjunction with the Royal Show would continue, allowing more members from around the Country to become involved in the affairs of the Society.

The 1993 Royal Show is to be held in Hastings and it was, resolved that the A.G.M. and Dinner for 1993 be held during show week (21st - 23rd October) at a date and venue to be decided. (McLachlan/Scott).

### **General Business:**

A letter from the Southern District Simmental Club was tabled voicing concern about the change in regard to allowing post-entries for the Simmental Society Junior Herdsperson competition, held in conjunction with the Royal Show.

John Robins also spoke re the change in the post entry requirements and he pointed out that in his view allowing post entry disregards the discipline required by the young handlers to be able to effectively prepare and compete in the Competition. John also pointed out that no other Royal Show class allows post-entries and that this factor may hinder the Society in the future.

Craig Martin answered John Robins concerns by saying that the objective of the Competition was to foster and encourage young handlers to enter and enjoy cattle showing and develop continued support for the future. Also some young people do not have access to an animal to

show, until a breeder at the Show may offer a suitable animal.

Lachie McLachlan said he had removed himself from the Council's decision to reopen entries and supported the Southern Clubs concern and also mentioned that late entries had some problems at the Show.

David Carter, the President, spoke to the reasons that the Council had opened the Competition to post-entries. When entries first closed only fourteen entries had been received with very few from other breeds, meaning the Competition line up would be somewhat bias. Also many contestants were also sitting exams during this time and when entries closed were unsure of their exam commitments. By opening post-entries the Competition finally had twenty-eight entrants and this provided a great profile for the up and coming handlers and to the Simmental breed for sponsoring the Competition.

Further healthy discussion continued supporting both sides of the argument regarding post entries. Ways of improving entries for next year will be discussed at Council in February, 1993 and with the organisers of the Royal Show to ensure we do not compromise the Competitions place with the Royal Show programme.

Bill Macbeth made a comment to the length of term of Councillors and President.

No further discussion followed.

The President, David Carter indicated that as there was no further General Business, he would declare the Meeting closed. David Carter thanked everyone for their attendance and looked forward to meeting them again in Hastings in twelve months time.

The Meeting Closed at 6.55 p.m.

*David C. Carter,*  
President

# Glen Anthony Simmental Stud

(Herd 299)



Glen Anthony Aristocrat: 950 Kgs at 20 months of age. Meat & Wool Cup Winner - Easter Royal Show.  
To be retained in the herd

---

## 1993 Bull Sales

---

### **4th Annual Bull Sale**

Wednesday 16 June. 12 noon Waipukurau Stock Selling Centre

30 Performance Recorded Bulls For Sale

### **National Bull Sale**

Palmerston North

3 Stud Prospects

Glen Anthony Axel - Dunmore Hansa x Glen Anthony Harmony  
Glen Anthony Advocate - B.B.A. Galant x Glen Anthony AX40  
Glen Anthony Argyle - B.B.A. Galant x Glen Anthony AX40

These bulls are out of top production cows who are both show champions

**We invite your inquiry:**

**Tony & Glennis Thompson, R.D. 4 Waipukurau**  
**Phone 06 858 8705**



# Show Results

## Heifer & Steer Competition

### CAMBRIDGE A. & P. SHOW

Open Grade over 260 kg

1st W. & H. Woolston

Best Yielding Carcase

W. & H. Woolston

Simmental

### TE KAUWHATA A.&P. - 12TH DECEMBER, 1992

Yearling Heifer (9)

2nd Darryl Turton

3rd M.I. & N.J. Entwisle

Bull Calf (10)

1st Darryl Turton

3rd G. & L. James

Heifer Calf (11)

3rd M.I. & N.J. Entwisle

4th G.L. James

Reserve Champ All Breeds Beef Animal

Best Beef Calf (15)

1st Darryl Turton

3rd M.I. & N.J. Entwisle

Junior Herdsperson (10)

1st Roger Hayward - leading Tusmore Boss

Victoria Oakview

Hampton Downs Artemis

Tusmore Boss

Burnley Karakajack

Hampton Downs begonia

Burnley

Tusmore Boss

Tusmore Boss

Hampton Downs Begonia

### ROTORUA A. & P. SHOW - 30TH JANUARY, 1993

Heifer One Year (8)

1st Darryl Turton

2nd A. & S. Aukaha

Champion Female

Yearling Bull (9)

1st Colleen O'Neil

2nd B. & J. Holland

Reserve Champion Male

Bull Calf (8)

1st Darry Turton

3rd B. & J. Holland

4th Colleen O'Neil

Heifer Calf (8)

1st B. & J. Holland

Champion Junior Animal

Reserve

Victoria Oakview

Double AA Adam

Victoria Oakview

Holly Abec

Camel Wheal Austin

Holly Abec

Tusmore Boss

Camel Wheal Burberry

Holly B.J.

Camel Wheal Bodecia

Tusmore Boss

Camel Wheal Bodecia

### TE AWAMUTU A. & P. -6TH FEBRUARY, 1993

Bull Calf (13)

1st Darry Turton

2nd B.B. & D.V. Anderson

Yearling Heifer (6)

1st Darryl Turton

Heifer Calf (15)

2nd W.A. & H.A. Woolston

Reserve Champion Junior Female

Champion Jun Male & Grand Champ Male

Reserve Junior Male

Tusmore Boss

Singing Hills Bax

Victoria Oakview

Misty Moor

Victoria Oakview

Tusmore Boss

Singing Hills Bax

### FRANKLIN A. & P. - 20 TH FEBRUARY, 1993

Two Year Old Heifer

1st Kidd Zundert

Yearling Heifer

1st Victoria Oakview

2nd Waingata Azalea

3rd Stoneybrook Lucinda

Heifer

1st Stoneybrook Superb

2nd M.I. & N.J. Entwisle

Bull Calf

1st Hampton Downs Barrister

Supreme Exhibit

All Breeds

Two Year Old Heifer

J.G.G. Grant

Darryl Turton

A.J. Fleming

J.G.B. Grant

J.G.B. Grant

Hampton Downs Begonia

M.I. & N.J. Entwisle

Kidd Zundert

1st Kidd Zundert

Yearling Heifer

1st Victoria Oakview

2nd Hampton Downs Artemis

3rd Stoneybrook Lucinda

Meat & Wool Cup

J.G.B. Grant

Darryl Turton

M.I. & N.J. Entwisle

J.G.B. Grant

Kidd Zundert

### WHAKATANE A. & P. - 27TH FEBRUARY, 1993

Bull Calf

1st Camel Wheal Burberry

2nd Double AA Basil

3rd Sinmol

Heifer Calf

1st Camel Wheal Bodecia

2nd Camel Wheal Bounty

Yearling Bull

1st Double AA Adam

2nd Camel Wheal Austin

3rd Holly Abec

Yearling Heifer

1st Shelven Andrea

2nd Double AA Ahie

3rd Camel Wheal Ascot

Bull Two Year Old

1st Glen Anthony Xerox

Male Champion

Female Champion

Supreme Champion

All Breeds

Bull Calf

1st Camel Wheal Burberry

3rd Double AA Basil

Yearling Heifer

1st Le Silver

2nd Double AA Ahie

3rd Shelven Andrea

Bull Two Years & Over

1st Glen Anthony Xerox

Male Champion

B. & J. Holland

A. & S. Aukaha

G.B. Gray

B. & J. Holland

B. & J. Holland

A. & S. Aukaha

B. & J. Holland

Collen O'Neil

S. & S. Robinson

A. & S. Aukaha

B. & J. Holland

S. & S. Robinson

Camel Wheal Burberry

Shelven Andrea

Camel Wheal Burberry

B. & J. Holland

A. & S. Aukaha

G.B. Gray

A. & S. Aukaha

S. & S. Robinson

S. & S. Robinson

Camel Wheal Burberry

### MORRINSVILLE, 6TH MARCH, 1993

Cow

1st Kidd Zundert

2nd Puketawa Xena

Champion Cow

Yearling Heifer

1st Victoria Oakview

2nd Marshall Sal

3rd Hampton Downs Artemis

Heifer Calf

1st Hampton Downs Beauty

2nd Misty Moor Bonny Girl

3rd Stoneybrook Beauty

Champion Junior Heifer

Bull Two Years & Over

1st Rissington Challenger

Yearling Bull

1st Rochvale Apollo

2nd Holly Abec

Bull Calf

1st Tusmore Boss

2nd Hampton Downs Barrister

Champion Junior Male

Resere

Supreme Exhibit

All Breeds

Yearling Heifer

1st Victoria Oakview

Two Year Old Heifer

J.G.B. Grant

J.B. Scott

Kidd Zundert

Darryl Turton

H.T. & E.F. Marshall

M.I. & N.J. Entwisle

M.I. & N.J. Entwisle

W. & H. Woolston

J.G.B. Grant

Victoria Oakview

P.J. & J.A. Cowley

P.J. & J.A. Cowley

Collen O'Neil

Darry Turton

M.I. & N.J. Entwisle

Tusmore Boss

Rochvale Apollo

Kidd Zundert

Darryl Turton

1st Kidd Zundert  
 Yearling Bull  
 2nd Rochvale Apollo  
 Two Year Old Bull & Over  
 2nd Rissington Challenger  
 Cow Two Years & over with calf  
 1st Kidd Zundert  
 4th Puketawa Xena  
 Heifer Calf  
 3rd Stoneybrook Beauty  
 4th Hampton Downs Beauty  
 Bull Calf  
 2nd Tusmore Boss  
 Supreme Female  
 Reserve  
 Grand Champion

#### GISBORNE SHOW

Judge: M. Proude  
 Senior & Grand Champion Cow & Supreme  
 Glen Antony Yvette (BBA Galant)  
 Junior Champion Heifer  
 Pouriwai Anna (Grand Desire)  
 Senior Champion Bull  
 Munga Park Highway (Munga Park Frederic)  
 Junior & Grand Champion Bull  
 Pouriwai Anzac (Grand Desire)  
 All Breeds  
 Yearling Bull  
 1st Pouriwai Anzac  
 Yearling Heifer  
 2nd Pouriwai Anna  
 Meat & Wool Cup  
 1st Atahua Leggacy (Angus)  
 2nd Koanui Blueprint (Hereford)

#### HAWKES BAY SHOW

Judge: H. McIntyre  
 Senior & Grand Champion Cow & Supreme  
 Rissington Red Lady (Rissington Big Red)  
 Junior Champion Heifer  
 Pouriwai Anna (Grand Desire)  
 Senior & Grand Champion Bull  
 Herrington Hero (Dunmore Cossack)  
 Junior Champion Bull  
 Pouriwai Anzac (Grand Desire)  
 All Breeds  
 Cow & Calf Performance Class  
 1st Rissington Red Lady  
 Yearling Bull  
 1st Hereford  
 2nd Glen Anthony Aristocrat  
 3rd Pouriwai Anzac  
 Meat & Wool Cup  
 1st Koanui Blueprint (Hereford)  
 2nd Atahua Leggacy (Angus)  
 Waipukurau Show - All Breeds Show  
 Cow & Calf Class and Supreme  
 1st Glen Anthony AX14 (Dunmore Hansa)  
 Yearling Heifer  
 1st Glen Anthony Entry (BBA Galant)  
 Yearling Bull  
 2nd Glen Anthony Entry (Dunmore Hansa)

#### DANNEVIRKE SHOW

Judge: M. Proude  
 Senior & Grand Champion Cow & Supreme  
 Glen Anthony AX14 (Dunmore Hansa)  
 Junior Champion Heifer  
 Glen Anthony Aroha (Rissington Big Red)  
 Senior Champion Bull  
 Munga Park Jack Horner (Munga Park Frederic)  
 Junior & Grand Champion Bull  
 Glen Anthony Aristocrat (Glen Anthony Yukon)  
 All Breeds  
 Meat & Wool Cup  
 1st Koanui Blueprint (Hereford)  
 2nd Glen Anthony AX14

J.G.B. Grant  
 P.J. & J.A. Cowley  
 P.J. & J.A. Cowley  
 J.G.B. Grant  
 J.B. Scott  
 J.G.B. Grant  
 M.I. & N.J. Entwisle  
 Darry Turton  
 Kidd Zundert  
 Victoria Oakview  
 Kidd Zundert

A.H. & G. Thompson

G.B. Kemp

D. Stein

G.B. Kemp

G.B. Kemp

G.B. Kemp

J.B. & S. Absalom

G.B. Kemp

J. & M. Proude

G.B. Kemp

A.H. & G. Thompson

A.H. & G. Thompson

A.H. & G. Thompson

A.H. & G. Thompson

D. Stein

A.H. & G. Thompson

Yearling Bull  
 1st Glen Anthony Aristocrat  
 Yearling Heifer  
 1st Glen Anthony Aroha  
 Bull Calf  
 1st Glen Anthony Simmentals  
 3rd Glen Anthony Simmentals  
 Heifer Calf  
 1st Hereford  
 2nd Glen Anthony Simmentals

#### PAHIATUA SHOW

Judge: A. Godsiff  
 Senior & Grand Champion Cow & Supreme  
 Glen Anthony AX14 (Dunmore Hansa) A.H. & G. Thompson  
 Junior Champion Heifer  
 Glen Anthony Aroha (Rissington Big Red) A.H. & G. Thompson  
 Senior Champion Bull  
 Munga Park Jack Horner D. Stein  
 Junior & Grand Champion Bull  
 Glen Anthony Aristocrat (Glen Anthony Yukon) A.H. & G. Thompson  
 All Breeds  
 Meat & Wool Cup  
 1st Glen Anthony AX14  
 2nd Dundee Prophet (Shorthorn)  
 Calf & Calf  
 1st Glen Anthony Ax14  
 Yearling Bull  
 1st Glen Anthony Aristocrat  
 Bull Calf  
 1st South Devon  
 2nd Glen Anthony Simmentals

#### HELENSVILLE A. & P. SHOW 27TH FEBRUARY, 1993

All Breeds Beef  
 Bull Calf  
 1st Rivendell Brutus J. & D. Longville  
 Cow & Calf Three Years & Over  
 2nd Tokaweka Yvonne J. & D. Longville  
 Reserve Champion Male  
 Rivendell Brutus J. & D. Longville  
 Reserve Champion Female  
 Tokaweka Yvonne J. & D. Longville

#### KUMEU A. & P. SHOW 6TH MARCH, 1993

Exotic Beef Breed  
 Cow & Calf Three Years & Over  
 3rd Tokaweka Yvonne J. & D. Longville  
 ] Heifer Calf  
 3rd Springhill Agatha Springhill Simmentals  
 Bull Two Years  
 2nd Puketawa Zealanda Springhill Simmentals  
 Bull Calf  
 1st Rivendell Brutus J. & D. Longville  
 Reserve Senior Champion  
 Puketawa Zealanda Springhill Simmentals  
 Reserve Junior Champion  
 Rivendell Brutus J. & D. Longville

#### NELSON A. & P. SHOW - 21st/22nd November, 1992.

Judge: Mr. O Osborne, Christchurch.  
 Yearling Heifer  
 1st Moneymore Mustang Sally R.R. Martin Trust  
 2nd Moneymore Madonna R.R. Martin Trust  
 Yearling Bull  
 1st Thurston Ace A. & B. Ritchie  
 2nd Moneymore Bush-Fire R.R. Martin Trust  
 Cow & Calf  
 1st Moneymore Robina R.R. Martin Trust  
 Champion Simmental  
 Moneymore Robina R.R. Martin Trust  
 Reserve Champion Simmental  
 Thurston Ace A. & B. Ritchie  
 Inter-Breeds  
 Yearling Bull  
 1st Thurston Ace A. & B. Ritchie  
 2nd Angus  
 3rd Moneymore Bush-Fire R.R. Martin Trust



# 2<sup>ND</sup> ANNUAL COMBINED SALE

TUESDAY, 13TH JULY - 11.00AM  
ON FARM AT TROSSACHS SIMMENTALS  
TEA CREEK RD, CARTERTON



**26 REGISTERED PEDIGREE BULLS**  
**10 REGISTERED PEDIGREE FEMALES**

## SPECIAL FEATURES

### **TROSSACHS CAMPBELL**

- Sire: *Dunmore Cossack*
- Dam's Sire: *Rissington Big Red*
- ◆ Rising 3yr old
- ◆ A1 Registered Bull with Simmental Soc.
- ◆ Used for past 2 years in Trossachs herd with outstanding results
- ◆ Semen straws from this bull sold to other breeders

NB: The Trossachs Simmentals hold 400 straws which will be held for use in their own herd.

### **JINDABYNE APOLLO**

- Sire: *Piggot Range Poll Douglas*
- Dam: *Glen Anthony 299/AX69*
- ◆ Rising 2yr old
- ◆ Placed 2nd Pahiatua & Masterton A&P shows as yearling
- ◆ This polled bull shows outstanding promise with proven bloodlines

### **FREE MUNGA PARK HIGHWAY STRAWS**

With every Trossachs female sold, the successful bidder will receive 5 complimentary Highway straws (Multiple NZ Meat & Wool Cup winner).

### **UNIQUE OPPORTUNITY**

#### **MUNGA PARK "HETTY"**

- ◆ Imported from Australia 2 seasons ago
- ◆ Proven easy calving with progeny on ground
- ◆ Certified in calf to outstanding Australian sire "Highway II"

### **FREE MUNGA PARK JACK HORNER STRAWS**

With every Jindabyne female sold, the successful bidder will receive 5 complimentary straws from this outstanding Australian born sire

### **HIGHWAY SIRED HEIFER**

- ◆ First time Highway female progeny available for sale in NZ.
- ◆ Highway heifer twins born 1992 will be auctioned - successful bidder will have choice of 1 of the 2 females.

NB: Highway's female progeny already proven in show ring - Masterton show, a win Inter-breed female calf section.

### **JINDABYNE AXLE**

- Sire: *Rissington Coopental Terrific*
- Dam: *Rissington 49/AX440*
- ◆ A long, smooth, dark red bull ideally suited as a pedigree herd sire
- ◆ This bull has been shown and has an excellent temperament

**HIGHWAY II AND JACK HORNER  
WILL BE ON SHOW AT THE AUCTION**

For further information or a sale catalogue contact:

**THE TROSSACHS  
SIMMENTALS**  
Tea Creek Rd, Carterton  
Ph: 06 379 8395 (ah)

**JINDABYNE  
SIMMENTAL**  
Fabians Rd, Greytown RD1  
Ph: 06 304 8137 (ah)

Cow 3 Years & Over  
1st Moneymore Robina R.R. Martin Trust  
2nd Angus 3rd Hereford  
Supreme Champion of Show  
Moneymore Robina R.R. Martin Trust (Elders Challenge Trophy)

### MARLBOROUGH A. & P. SHOW, 7TH NOVEMBER, 1992

Judge: Mr. Chas Lee, Ward  
Yearling Heifer  
1st Thursday Amanda A. & B. Ritchie  
Yearling Bull  
1st Moneymore Bush-Fire R.R. Martin Trust  
2nd Thurston Ace A. & B. Ritchie  
Cow & Calf  
1st Thurston Ultimate A. & B. Ritchie  
Champion Male  
Moneymore Bush-Fire R.R. Martin Trust  
Champion Female  
Thurston Ultimate A. & B. Ritchie  
All Breeds  
Supreme Champion All Breeds Yearling  
1st Moneymore Bush-Fire R.R. Martin Trust  
2nd Angus  
3rd Hereford.  
Meat & Wool Cup - Supreme of Show

### HAWERA A. & P. SHOW 21ST NOVEMBER, 1992

Judge: Frances Hill, Waitotara  
Senior Bull 1st Rissington Challenger P.J. Cowley  
Cow & Calf 1st Lynmar Zoe K. & L. Nankervis  
2nd Rissington AZ233 J. & B. Bliss  
Yearling Bull 1st Rockvale Antron P.J. Cowley  
2nd Rockvale Apollo P.J. Cowley  
Bull Calf 1st Lynmar Boss K. & L. Nankervis  
2nd Sentry Hill Ben J. & B. Bliss  
3rd Sentry Hill Brad J. & B. Bliss  
Heifer Calf 1st Kiandra Brooke S. & P. Southgate  
2nd Lynmar Bridget K. & L. Nankervis  
3rd Lynmar Biddy K. & L. Nankervis  
Best of Breed 1st Rockvale Antron  
Reserve Lynmar Zoe  
All Breeds  
Yearling Bull 1st Rockvale Antron  
3rd Rockvale Apollo  
Cow & Calf 1st Lynmar Zoe  
3rd Rissington AZ233  
Senior Bull 1st Rissington Challenger  
Meat & Wool Cup Rockvale Antron

### STRATFORD A. & P. SHOW 28TH NOVEMBER, 1993.

Judge: Alastair Miln, Ohingaiti  
Senior Bull 1st Rissington Challenger P.J. Cowley  
2nd Glen Anthony Zero L. & A. Marshall  
Cow & Calf at foot 1st Lynmar Zoe K. & L. Nankervis  
Yearling Bull 1st Rockvale Apollo P.J. Cowley  
2nd Rockvale Antron P.J. Cowley  
Bull Calf 1st Lynmar Boss K. & L. Nankervis  
2nd Sentry Hill Ben J. & B. Bliss  
3rd Sentry Hill Brad J. & B. Bliss  
Heifer Calf 1st Kiandra Brooke S. & P. Southgate  
2nd Lynmar Bridget K. & L. Nankervis  
3rd Kiandra Beatrix M. & S. Southgate  
Best of Breed Rissington Challenger  
All Breeds  
Yearling Bull 1st Rockvale Apollo  
Senior Bull 1st Rissington Challenger  
Best Junior 1st Rockvale Apollo  
Meat & Wool Cup Rissington Challenger

### SOUTH OTAGO SHOW (BALCLUTHA) SATURDAY, 28TH NOVEMBER, 1992

Judge: Ross Cockburn, Te Anau  
Associate Judge: Trevor Potter, Gore  
Awarua Lime Supreme Champion Cow 3 & Over  
Helensbrook Wynette AW101 Helensbrook Ptn.  
Maraetotara Prince AP101/Helensbrook Cathy (L.E. McLachlan)

Reserve Champion Female  
Glenside Annabell AA110  
Munga Park Frederic/Marfrey Wendy AW9  
Champion Male  
Puketawa Zealous AZ108 KGM Simmentals  
Puketawa Tall Boy/Puketawa AT2 (K.R. Hinton)  
Reserve Champion Male  
Bayside Action Man AA20 N. Hellyer  
Rissington Rival/Rissington AR434  
Cow Three or Over  
1st Helensbrook Synette AW101  
Maraetotara Prince AP101/Helensbrook Cathy Helensbrook Ptn  
2nd Munga Park Hannah (L.E. McLachlan)  
Munga Park Frederic/Munga Park Bridget Glenside Simmentals  
3rd Levels Gunda AX116 C/- G.I. McCorkindale  
Larsen/Gerdi G. & L. Bain  
Senior Yearling Heifer  
1st Glenside Annabelle AA110 Glenside Simmentals  
Munga Park Frederic/Marfrey Wendy AW9 C/- G.I. McCorkindale  
2nd Pinelee Anna AA1 G. & L. Bain  
Dunmore Hansa/Glen Anthony 299AH1  
3rd Helensbrook Anna AA246 Helensbrook Ptn  
Rissington Rival AU718/Helensbrook Xorable (L.E. McLachlan)  
Junior Yearling Heifer  
1st Glenside April AA16 Glenside Simmentals  
Rissington Polled Red/Avon Park AW55 C/- G.I. McCorkindale  
Pair Yearling Heifers  
Glenside Simmentals  
Bull, Two Years or Over  
1st Puketawa Zealous AZ108 KGM Simmentals  
Puketawa Tall Boy/Puketawa AT2  
Senior Yearling Bull  
1st Bayside Action Man N. Hellyer  
Rissington Rival/Rissington AR434  
2nd Glenside Artic AA16 Glenside Simmentals  
Lonsdale Farm Bernard/Glenside Ursula AU6  
3rd Glenside Alfred The Great Glenside Simmentals  
Munga Park Frederic/Rissington AU793  
Three Animals - Progeny of one sire  
Munga Park Frederic Glenside Simmentals  
All Breeds Meat & Wool Cup  
Helensbrook Wynette  
Junior Champion - Male or Female  
Glenside Annabelle AA110

### GORE A. & P. SHOW WEDNESDAY, 2nd December, 1992

Judge: Roger Caird, Pareora  
Associate Judge: Warren Burgess, Owaka  
Awarua Lime Supreme Champion & Champion Yearling Heifer  
Glenside Annabelle Glenside Simmentals  
Munga Park Frederic/Marfrey Wendy  
Champion Senior Cow & Cow over Three Years  
Munga Park Hannah Glenside Simmentals  
Munga Park Frederic/Munga Park Bridget  
Senior Yearling Heifer  
1st Glenside Annabelle Glenside Simmentals  
Munga Park Frederic/Marfrey Wendy  
2nd Robot Alison J.A. & M.J. Robins  
Robot Rangi 585/AR32X/Robot Sandi  
Junior Yearling Heifer - Reserve Champion Yearling Heifer  
1st Glenside April Glenside Simmentals  
Rissington Polled Red/Avon Park AW55  
2nd Robot Amanda J.A. & M.J. Robins  
Robot Rangi 585/AR32X/Robot Miss Jade  
3rd Robot Annabell J.A. & M.J. Robins  
Robot Rangi 585/AR32X/Robot Trixie  
Pair Yearling Heifers  
1st J.A. & M.J. Robins  
2nd Glenside Simmentals  
Champion Senior Bull and Bull, Two Years  
Puketawa Zealous KGM Simmentals  
Puketawa Tall Boy/Puketawa AT2  
Champion Yearling Bull and Yearling Bull Class  
1st Robot Admiral J.A. & M.J. Robins  
Robot Rangi/Robot Unique 585/AU49  
Reserve Champion Yearling Bull  
2nd Glenside Alfred The Great Glenside Simmentals



Munga Park Frederic/Rissington AU793  
 3rd Glenside Artic  
 Lonsdale Farm Bernard/Glenside Ursula  
 Breeders Group, One Bull & Two Females  
     1st Glenside Simmentals  
     2nd J.A. & M.J. Robins  
 Junior Herdperson  
     2nd Nathan Hellyer  
     4th Duncan McLachlan  
     5th Jane Harrington  
 All Breeds Kane Trophy Glenside Annabelle

# **TOKOMAIRIRO SHOW - MILTON - SATURDAY, 12th December, 1992.**

Judge: Graham Bain, Outram Associate Judge: Nathan Hellyer, Owaka  
 Awarua Supreme Champion & Champion Female  
 Helensbrook Wynette Helensbrook Ptn.  
 Maraetotara Prince AP101/Helensbrook Cathy  
 Reserve Champion Female  
 Glenside Annabelle Glenside Simmentals  
 Munga Park Frederic/Marfrey Wendy AW9  
 Champion Male  
 Robot Admiral J.A. & M.J. Robins  
 Robot Rangi 585/AR32X/Robot Unique  
 Reserve Champion Male  
 Glenside Alfred The Great Glenside Simmentals  
 Munga Park Frederic/Rissington AU793  
 Cow, Any Age  
 1st Helensbrook Wynette Helensbrook Ptn  
 Maraetotara Prince AP101/Helensbrook Cathy  
 2nd Munga Park Hannah Glenside Simmentals  
 Munga Park Frederic/Munga Park Bridget  
 Yearling Heifer  
 1st Glenside Annabelle Glenside Simmentals  
 Munga Park Frederic/Marfrey Wendy AW9  
 2nd Robot Amanda J.A. & M.J. Robins  
 Robot Rangi 585/AR32X/Robot Miss Jade 585/AM17  
 3rd Glenside April Glenside Simmentals  
 Rissington Polled Red/Avon Park AW55  
 Pair Yearling Heifers  
 1st Glenside Simmentals 2nd Helensbrook Ptn  
 Yearling Bull  
 1st Robot Admiral J.A. & M.J. Robins  
 Robot Rangi 585/AR32X/Robot Unique 585/AU49  
 2nd Glenside Alfred The Great Glenside Simmentals  
 Munga Park Frederic/Rissington AU793  
 3rd Glenside Artic Glenside Simmentals  
 Lonsdale Farm Bernard/Glenside Ursula AU6  
 All Breeds Breeders Group - One Bull & Two Females  
 Glenside Simmentals  
 Junior Herdperson  
 2nd Nathan Hellyer  
 3rd Duncan McLachlan  
 Yearling Bull Robot Admiral  
 Yearling Heifer Glenside Annabelle  
 Reid Farmers Junior Herdperson 1992 Duncan McLachlan

# **WINTON A. & P. SHOW - SATURDAY, 6th February, 1993**

Judge: Gary McCorkindale,  
 Lawrence Associate Judge: Andrew McLachlan, Dipton  
 Awarua Lime Supreme Champion and Champion Female  
 Robot Amanda J.A. & M.J. Robins  
 Robot Rangi/Robot Miss Jade  
 Reserve Champion Female  
 Robot Annabell J.A. & M.J. Robins  
 Robot Rangi/Robot Trixie  
 Champion Male and Yearling Bull  
 Robot Admiral J.A. & M.J. Robins  
 Robot Rangi/Robot Unique  
 Yearling Heifer  
 1st Robot Amanda J.A. & M.J. Robins  
 Robot Rangi/Robot Miss Jade  
 2nd Robot Annabell J.A. & M.J. Robins  
 Robot Rangi/Robot Trixie  
 3rd Robot Alison J.A. & M.J. Robins  
 Robot Rangi/Robot Sandi  
 Two Yearling Old Heifers J.A. & M.J. Robins

Bull and Two Females  
 All Breeds Alliance Meat & Wool Cup  
 Robot Amanda  
 A.N.Z. Bank All Breeds Heifer  
 Robot Amanda  
 Junior Herdperson  
 1st Julie Anderson  
 2nd Andrew McLachlan  
 3rd Jane Harrington

# **UPPER CLUTHA SHOW (WANAKA) - SATURDAY, 13th March, 1993**

Judge: Simon Cox,  
 Timaru Associate Judge: Sheryl Donald, Winton  
 Awarua Lime Supreme Champion and Champion Male  
 Puketawa Zealous KGM Simmentals  
 Puketawa Tall Boy/Puketawa AT2  
 Bull, Two Years and Over Reserve Champion Male  
 Robot Admiral J.A. & M.J. Robins  
 Robot Rangi 585/AR32X/Robot Unique  
 Champion Female  
 Glenside Annabelle Glenside Simmentals  
 Munga Park Frederic/Marfrey Wendy AW9  
 Reserve Champion Female Not Judged  
 Yearling Bull 1st Robot Admiral J.A. & M.J. Robins  
 Robot Rangi 585/AR32X/Robot Unique  
 2nd Glenside Artic Glenside Simmentals  
 Lonsdale Farm Bernard/Glenside Ursula AU6  
 3rd Glenside Alfred The Great Glenside Simmentals  
 Munga Park Frederic/Rissington AU793  
 Yearling Heifer  
 1st Glenside Annabelle Glenside Simmentals  
 Munga Park Frederic/Marfrey Wendy AW9  
 2nd Robot Amanda J.A. & M.J. Robins  
 Robot Rangi 585/AR32X/Robot Miss Jade 585/AM17  
 3rd Glenside April Glenside Simmentals  
 Rissington Polled Red/Avon Park AW55  
 Heifer Calf  
 1st Glenside Bombshell Glenside Simmentals  
 Malvern Downs AY1/Avon Park Rarity  
 Two Yearling Old Heifers Glenside Simmentals  
 Junior Herdperson  
 1st Nathan Hellyer  
 All Breeds Pair - Bull and Heifer  
 1st Glenside Simmentals  
 2nd J.A. & M.J. Robins  
 Champion Bull  
 Puketawa Zealous

# **WEST OTAGO SHOW, TAPANUI - SATURDAY, 21st November, 1992**

Judge: David Dickie, Ferndale Associate Judge: David Keown, Raes Junction  
 Awarua Lime Supreme Champion and Champion Female  
 Glenside Annabelle Glenside Simmentals  
 Munga Park Frederic/Marfrey Wendy AW9  
 Reserve Champion Female Robot Annabell J.A. & M.J. Robins  
 Robot Rangi 585/AR32X/Robot Trixie 585/AT40  
 Champion Male Glenside Alfred The Great Glenside Simmentals  
 Munga Park Frederic/Rissington AU793  
 Reserve Champion Male Puketawa Zealous KGM Simmentals  
 Puketawa Tall Boy/Puketawa AT2  
 Cow, Any Age  
 1st Munga Park Hannah Glenside Simmentals  
 Munga Park Frederic/Munga Park Bridget  
 Yearling Heifer 1st Glenside Annabelle Glenside Simmentals  
 Munga Park Frederic/Marfrey Wendy AW9  
 2nd Robot Annabell J.A. & M.J. Robins  
 Robot Rangi 585/AR32X/Robot Trixie 585/AT40  
 3rd Glenside April Glenside Simmentals  
 Rissington Polled Red/Avon Park AW55  
 Bull, Two Years  
 1st Puketawa Zealous KGM Simmentals  
 Puketawa Tall Boy/Puketawa AT2  
 Yearling Bull  
 1st Glenside Alfred The Great Glenside Simmentals  
 Munga Park Frederic/Rissington AU793  
 2nd Robot Admiral J.A. & M.J. Robins  
 Robot Rangi 585/AR32X/Robot Unique 585/AU49

3rd Glenside Artic  
Lonsdale Farm Bernard/Glenside Ursula AU6  
Junior Herdsperson  
2nd Duncan McLachlan

# **INVERCARGILL A. & P. SHOW - 8th & 9th December, 1992**

Judge: Rodney Cox Associate Judge: Barry Lee  
Awarua Lime Supreme Champion and Grand Champion Female  
Helensbrook Wynette Helensbrook Ptn  
Maraetotara Prince AP101/Helensbrook Cathy  
Reserve Champion Female  
Glenside Annabelle Glenside Simmentals  
Munga Park Frederic/Marfrey Wendy AW9  
Grand Champion Male Puketawa Zealous KGM Simmentals  
Puketawa Tall Boy/Puketawa AT2  
Reserve Champion Male J.A. & M.J. Robins  
Robot Rangi/Robot Unique  
Cow, Over Three Years  
1st Helensbrook Wynette Helensbrook Ptn  
Maraetotara Prince/Helensbrook Cathy  
2nd Munga Park Hannah Glenside Simmentals  
Munga Park Frederic/Munga Park Bridget  
Senior Yearling Heifer  
1st Glenside Annabelle Glenside Simmentals  
Munga Park Frederic/Marfrey Wendy  
2nd Robot Alison J.A. & M.J. Robins  
Robot Rangi/Robot Sandi  
3rd Sunnyvale Anna R.W. Lott & Sons  
Polled Master/Sunnyvale Rata 1178/AR4  
Junior Yearling Heifer  
1st Glenside April Glenside Simmentals  
Rissington Polled Red/Avon Park AW55  
2nd Robot Amanda J.A. & M.J. Robins  
Robot Rangi/Robot Miss Jade  
3rd Robot Annabelle J.A. & M.J. Robins  
Robot Rangi/Robot Trixie  
Junior Champion Female Glenside Simmentals  
Glenside Annabelle  
Munga Park Frederic/Marfrey Wendy  
Reserve Junior Champion Female  
Glenside April Glenside Simmentals  
Rissington Polled Red/Avon Park AW55  
Two Year Old Heifers  
1st Glenside Simmentals  
2nd J.A. & M.J. Robins  
Senior Champion Male and Bull, Two Year Old  
Puketawa Zealous KGM Simmentals  
Puketawa Tall Boy/Puketawa AT2  
Senior Yearling Bull  
1st Glenside Artic Glenside Simmentals  
Lonsdale Farm Bernard/Glenside Ursula  
2nd Glenside Alfred The Great Glenside Simmentals  
3rd Sunnyvale Amos R.W. Lott & Son  
Polled Master/Sunnyvale Rata  
Junior Yearling Bull  
1st Robot Admiral J.A. & M.J. Robins  
Robot Rangi/Robot Unique  
Junior Champion Yearling Bull  
Robot Admiral J.A. & M.J. Robins  
Robot Rangi/Robot Unique  
Junior Reserve Champion Bull  
Glenside Artic Glenside Simmentals  
Lonsdale Farm Bernard/Glenside Ursula  
Group - Bull & Two Year Old Females  
1st Glenside Simmentals  
2nd J.A. & M.J. Robins  
Progeny Class - Progeny of One Sire  
1st Robot Rangi J.A. & M.J. Robins  
2nd Munga Park Frederic Glenside Simmentals  
3rd Robot Rangi J.A. & M.J. Robins  
Sunnyvale Junior Herdsperson  
1st Mary-Anne Roberts  
2nd Duncan McLachlan  
All Breeds Classes  
3rd Jane Harrington

Glenside Simmentals

Senior Meat & Wool Cup  
2nd Helensbrook Wynette  
Junior Meat & Wool Cup  
Robot Admiral  
Bull, 2 Years or Over  
2nd Puketawa Zealous  
Yearling Bull  
1st Robot Admiral  
Cow  
1st Helensbrook Ptn  
Yearling Heifer  
1st Glenside Simmentals  
Yearling Heifer & Bull  
1st Glenside Simmentals  
3rd J.A. & M.J. Robins  
Braxton Trophy Junior Herdsperson  
1st Duncan McLachlan  
3rd Jane Harrington  
4th Julie Anderson  
Alliance Team Trophy Simmentals

# **MANAWATU SHOW AT PALMERSTON NORTH 6/7TH DECEMBER, 1992**

Judge: Alan Goddard  
Cow over Three Years 1st Ohu AU234 Landcorp Farming  
Junior Champion Female Brocade Anna H. & J. McIntyre  
Reserve Brocade Amanda H. & J. McIntyre  
Grand Champion Female Ohu AU234  
Reserve Brocade Anna  
Bull over Three Years Herrington Hero M. & J. Proude  
Junior Champion Bull Herrington Alpine  
Reserve Brocade Amos  
Supreme Champion Herrington Hero  
All Breeds Classes  
Meat & Wool Cup 2nd Herrington Hero M. & J. Proude  
Yearling Heifer 3rd Brocade Anna H. & J. McIntyre  
Yearling Bull 1st Herrington Alpine M. & J. Proude  
H. & J. McIntyre  
3rd Brocade Alvin H. & J. McIntyre  
Yearling Pair 1st H. & J. McIntyre  
2nd H. & J. McIntyre

# **FEILDING SHOW - 5TH DECEMBER, 1992**

Judge: Russell Priest  
Yearling Heifer Brocade Anna H. & J. McIntyre  
Yearling Bull Brocade Amos H. & J. McIntyre  
Supreme Champion Brocade Amos  
Interbreed Classes  
Yearling Bull 1st Brocade Amos  
Yearling Heifer 2nd Brocade Anna

# **MASTERTON SHOW RESULTS**

Judge: Craig Martin  
Yearling Heifer 1st Wai-iti Unique P. & S. McWilliam  
2nd Trossachs D. & L. Stein  
3rd Spring Dell A. Cheetham  
Heifer Calf 1st Trossachs Grace Drew Stein  
Champion Senior Bull Munga Park Jack Horner Drew Stein  
Champion Junior Bull Wai-iti Alligator P. & S. McWilliam  
Bull Calf Trossachs Dalkeths Drew Stein  
One Bull and Three Females 1st Trossachs Drew Stein  
2nd Spring Dell A. Cheetham  
Wai-iti Alligator P. & S. McWilliam  
Supreme Champion Simmental  
All Breeds Interbreeds  
Bull Calf  
Gelbvieh Shorthorn Hereford  
Heifer Calf Trossachs Grace Drew Stein  
Hereford Shorthorn  
Yearling Bull Wai-iti Alligator P. & S. McWilliam  
Angus Shorthorn  
Yearling Heifer  
Angus Hereford Salers  
Senior Cow  
Gelbvieh Angus Hereford  
Meat & Wool Cup  
Gelbvieh Shorthorn Wai-iti Alligator P. & S. McWilliam

## THE ROYAL EASTER SHOW OF CHAMPIONS

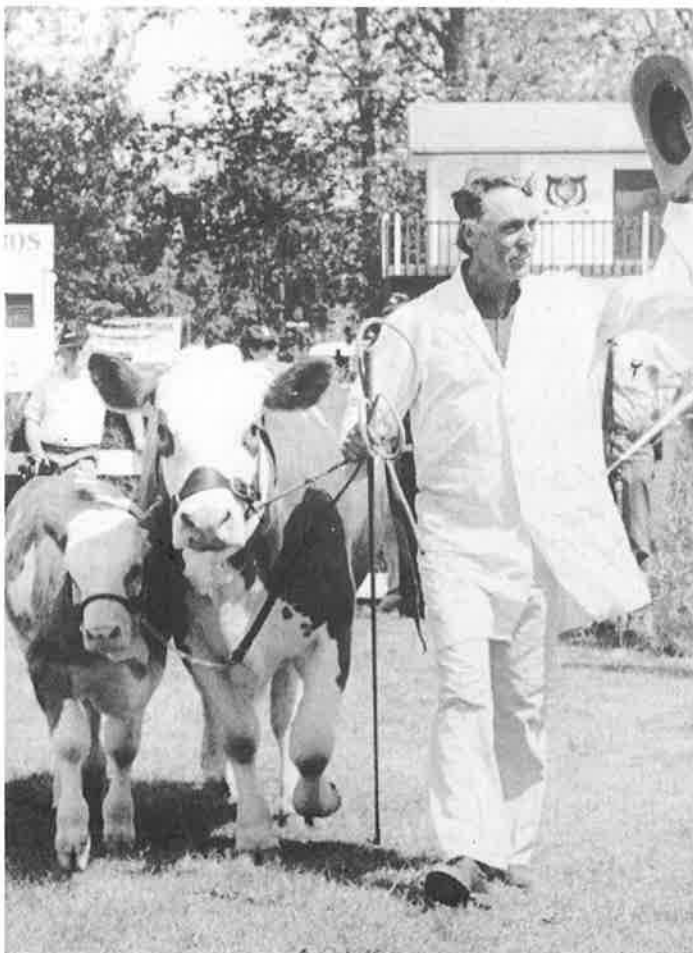
Judge: Don Graham

Cow Three Years & Over (3)

1st Glen Anthony AX14	A.H. & G. Thompson
2nd Puketawa Xena	J.B. Scott
3rd Glen Anthony Yvette	A.H. & G. Thompson

Heifer, Two Years With or Without Calf (2)

1st Glen Anthony Zulu Girl	A.H. & G. Thompson
2nd Kidd Zundert	J.G.B. & E.M. Grant



Tony Thompson showing cow & calf in November 1992

Heifer, Yearling (4)

1st Glen Anthony Aroha	A.H. & G. Thompson
2nd Victoria Oakview	Darryl Turton

Heifer, Calf (5)

1st Puketawa Belle	J.B. Scott
2nd Begonia	M. & N. Entwisle
3rd Stoneybrook Beauty	J.G.B. & E.M. Grant

Female Champion:

Glen Anthony Zulu Girl

Reserve Female Champion:

Glen Anthony AX14

Bull, Two Years & Over (2)

1st Rockdale Challenger	P.J. Cowley
2nd Puketawa Zealandia	R. Izard

Bull, Yearling (3)

1st Glen Anthony Aristocrat	A.H. & G. Thompson
2nd Rockvale Apologia	P.J. Cowley

Bull, Calf (4)

1st Tusmore Boss	Darryl Turton
2nd Glen Anthony Bonanza	A.H. & G. Thompson
3rd Barrister	M. & N. Entwisle

Male Champion:

Glen Anthony Aristocrat

Reserve Male Champion:

Rockdale Challenger

Supreme Champion:

Glen Anthony Aristocrat

Royal Inter Breed Cow or Heifer Two Years and Over (16)

1st Marie Grace	W.E. & J.E. Gray
2nd Charolais	P.M. & P.T. Bell
3rd Glen Anthony Yvette	A.H. & G. Thompson
4th Puketawa Xena	J.B. Scott
5th Glen Anthony	A.H. & G. Thompson

Royal Inter Breed Yearling Bull (16)

1st Glen Anthony Aristocrat	A.H. & G. Thompson
2nd Rockvale Apologia	P.J. Cowley

Royal Inter Breed Yearling Heifer (15)

1st Victoria Oakview	Darryl Turton
2nd Glen Anthony Aroha	A.H. & G. Thompson

Royal Interbreed Calf (bull/heifer) (25)

1st Charolais	
2nd Tusmore Boss	Darryl Turton
3rd Puketawa Belle Ablo	J.B. Scott
4th Glen Anthony Bonanza	A.H. & G.M. Thompson

Calf, Yearling & Two Year Old, (10)

1st Glen Anthony Aristocrat, Glen Anthony Zulu Girl Glen Anthony Bonanza	A.H. & G. Thompson
--	--------------------

Inter Breed Team of Two (17)

1st Glen Anthony Aristocrat Glen Anthony Zulu Girl	A.H. & G. Thompson
---	--------------------

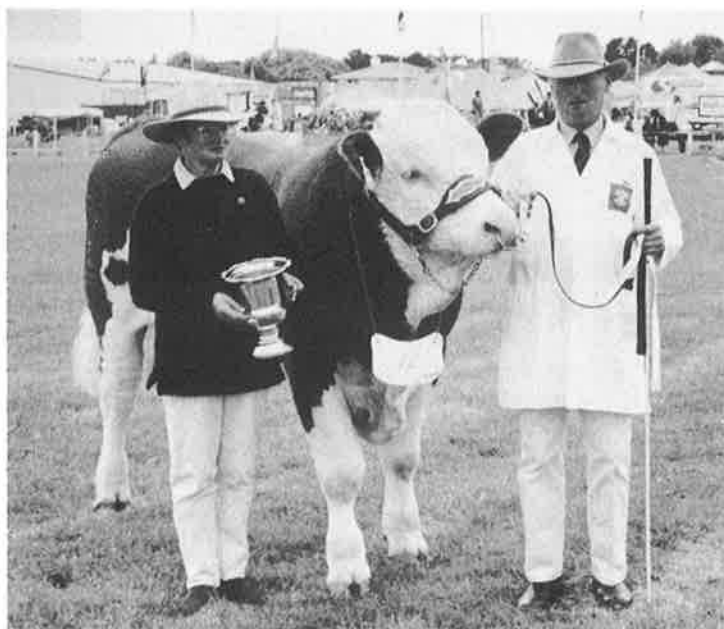
Inter Breed Top Team

1st Simmental Breed Team:

Rockdale Challenger, Glen Anthony, Aristocrat,  
Puketawa Xena, Glen Anthony Zulu Girl, Tusmore Boss.

Meat & Wool Cup:

1st Glen Anthony Aristocrat	A.H. & G. Thompson
2nd Hereford Two Year Old Bull	



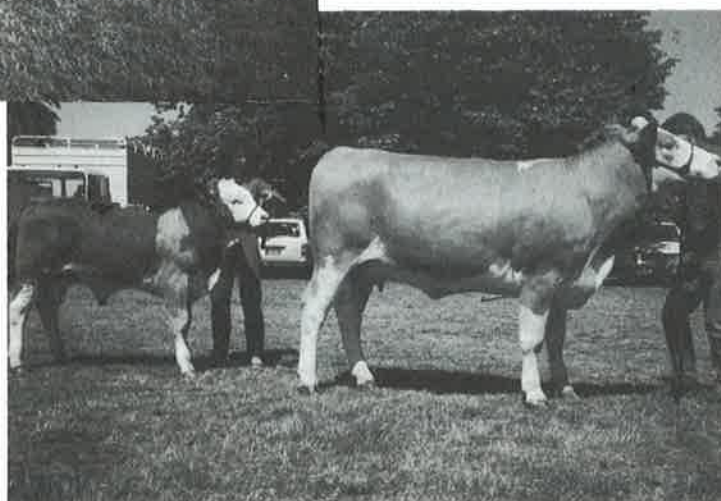
Joyce & John Robins with Junior Meat & Wool Cup and All breeds yearling bull, Robot Admiral - Invercargill 1992

Glen Anthony Zulu Girl -  
Champion Female Auckland  
Show - leader Kimberly  
Thompson



Alliance Teams Trophy - Southland A & P Show 1992  
from left: Ken Hinton, Janet McLachlan, Duncan McLachlan, John Robins  
and Richie McCorkindale

Moneymore Robina  
AY49 (3yo) - Supreme  
All Breeds Champion  
Nelson A & P 1992



## ROYAL SHOW TROPHIES -

Presented at the AGM Dinner, Christchurch

Supreme Champion - *Society Silver Salver*  
Helensbrook Simmental  
Helensbrook Wynette AW101  
with calf at foot.

Champion Animal of the Opposite Sex - *R.H. Kerr Salver*  
A. & J. Midgley  
Willowbrook Zak AZ19

Junior Champion Bull - *Society Large Silver Jug*  
J.B. Hellyer  
Bayside Action Man AA1

Junior Champion Heifer - *Society Small Silver Jug*  
G.M. & L.E. Bain  
Pinelee Anna AA1

Promotion Award - *Levels Challenge Trophy*  
J. Matheson.

Champion Animal Performance  
- *Coopental Challenge Tray (male)*  
R.R. Martin Trust  
Moneymore Simmentals

Top Heifer in Coopental Performance Competition  
- *Rissington Trophy*  
I & P Wright

Best Herdperson at the Royal Show  
- *Junior Challenge Trophy*  
D. & J. Matheson

Most successful Exhibitor at the Royal Show  
- *Rotomara Trophy*  
Glenside Simmentals



# LANDMARK CONFERENCE CALL AGREEMENT

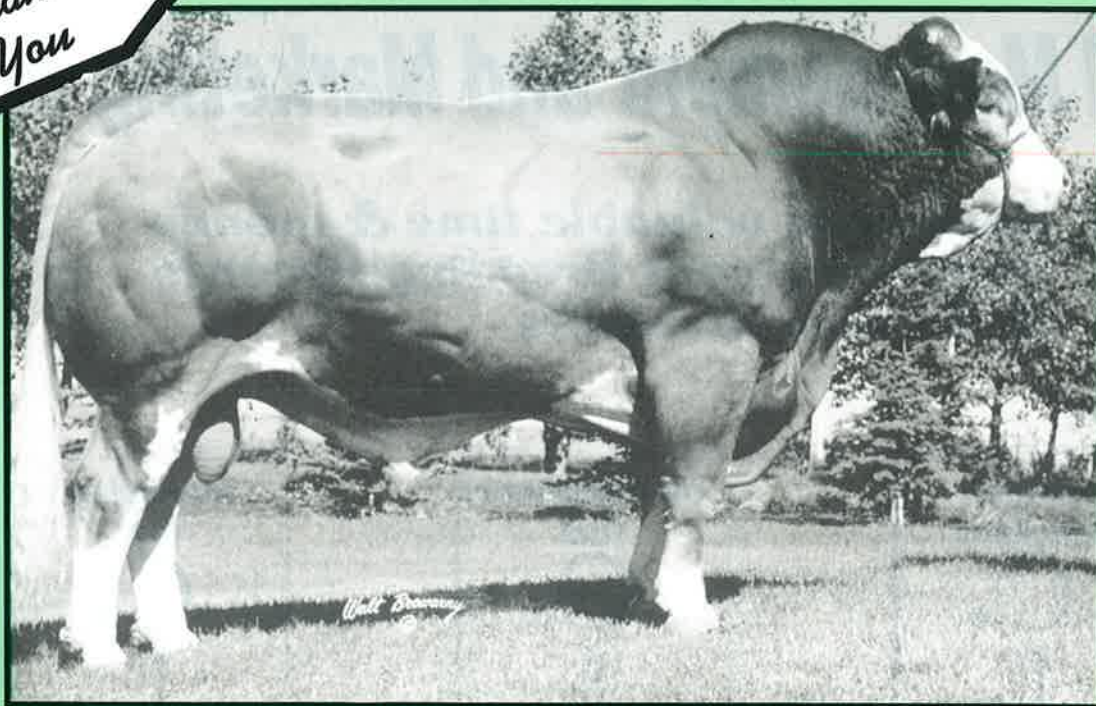
**BAR NONE**  
of Westlock &

between

**SUNRISE SIMMENTALS  
& ABC CATTLE CO.**  
of Spy Hill and Whitewood

*Thank  
You*

**BAR NONE SHAREHOLDER**



**CSA# 174623 Born:03/03/87 Birth Wt.:95lbs.**

Sultan  
Siegfreid  
Biene  
Sir Arnold 809G  
Sepperi  
ABR Shinanh Violet  
Vera

Neff  
Canadian Neff  
Therri  
Bar None Laika  
Pluto  
Laute  
Laube

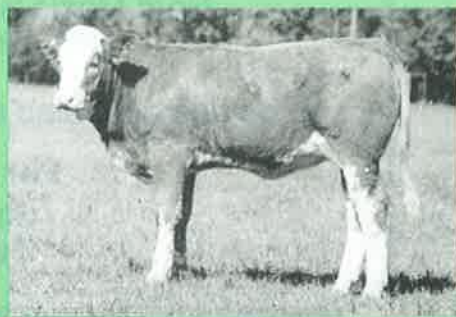
**SHAREHOLDER** Daughters at Bar None



2 year old

- Breeding shares in this world class sire will be available in Canada, USA, Australia, New Zealand and South American Countries.
- One of the great Flechveih carcass sires of the future

**New Zealand Agents  
Don & Craig Graham  
"Waingaro"  
Parnassus R D  
North Canterbury  
Tel. 03 319 2809**



'92 Calf

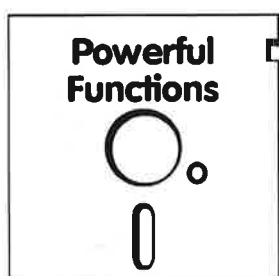


# Herd Magic

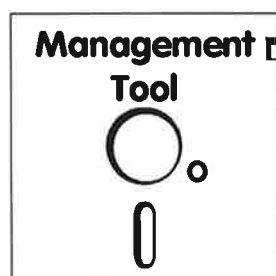


## ***The On Farm Herd Management and Marketing Tool***

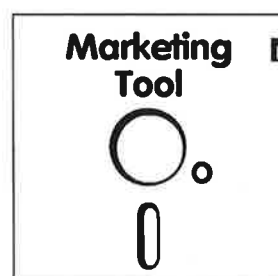
***Saves you valuable time & money  
in keeping your Breeding Records  
& Breedplan results***



Quick Entry  
Full Pedigree  
Zoom Facility  
Optional Traits  
Animal Grouping



Progeny Reports  
Mating Summaries  
On Farm Worksheets  
Performance Reports  
Adjusted Weight Calculations



Sales Analysis  
Client Listings  
Pedigree Reports  
Promotional Letters  
Performance Summaries

***Completely compatible with the new computer system  
installed by the Simmental Society***

### ***Special Introductory Offer***

Herd Magic is available at a special price of \$1250.00 +GST  
until June 30, 1993. Usual retail price \$1500.00.

To be demonstrated at the Breedplan Seminars in late May and early June.

**For more details contact: Paula Forde  
Simmental Cattle Breeders Society  
Tel . 03 3793 166 Fax. 03 3669 494**

# RISSINGTON SIMMENTALS

## Performance Cattle for Profit Seeking Breeders

*Whether your emphasis is on pedigrees, show ring, calving ease, growth, maternal ability, or a combination of these traits in both polled, horned, red or black Simmental sires .....*

***Chances are you'll find them at Rissington.***



**National Sale  
June 22nd**

2 Polled sons of Grand Desire  
1 son of Bar 5 Redman  
1 son of Rissington Big Red

**Rissington 11th Annual Bull Sale  
Monday 28th June**

60 R2 yr Sires (many stud prospects) by -  
USA calving ease trait leader, "Leachman  
Polled Red Baldy"  
by - our own USA weaning weight trait leader  
... "L.J.B. Jade"  
by - Coopental Terrific, Rissington  
Humphrey, Rissington Polled Ruler,  
Rissington Dynamite and many more.

***All backed by 20 years of performance selection  
Breedplan figures in catalogue.***

**Contact:- John & Star Absolom, R D 4 Napier Tel. (06) 839 5836 Fax. (06) 839 5859  
or Allan Godsiff Tel. (06) 839 5834**





**Levels Breeding Combination**

## **Levels Simmental Stud**

**Herd No. 3  
(Est 1972)**

**Levels, Timaru  
(Bull & Heifer Herd)**

**Mt Nissing, Albury  
(Breeding Cow Herd)**

## **Levels Stud**

**Breeders of top quality  
stud stock since 1972**

**Sold to all parts of  
New Zealand & Australia**

**Imported embryos  
& semen from Germany**

**Exported embryos to Canada**

**Stud animals available for transfer**



**Levels Cows at 2000ft  
above sea level**



**Levels Natasha with Calf**

## **Levels Stud**

**Breeders of good sound  
commercial bulls**

**Bred to produce top weaner  
calves**

**Performance recorded on  
BREEDPLAN**

## **LEVELS**



**Rodney Cox  
The Levels, 4 RD Timaru  
Tel. 03 688 2418 Fax. 03 688 2033  
or  
Simon Cox  
Mt Nissing, 16 RD Albury  
Tel. 03 685 5756 Fax 03 688 2033**

