

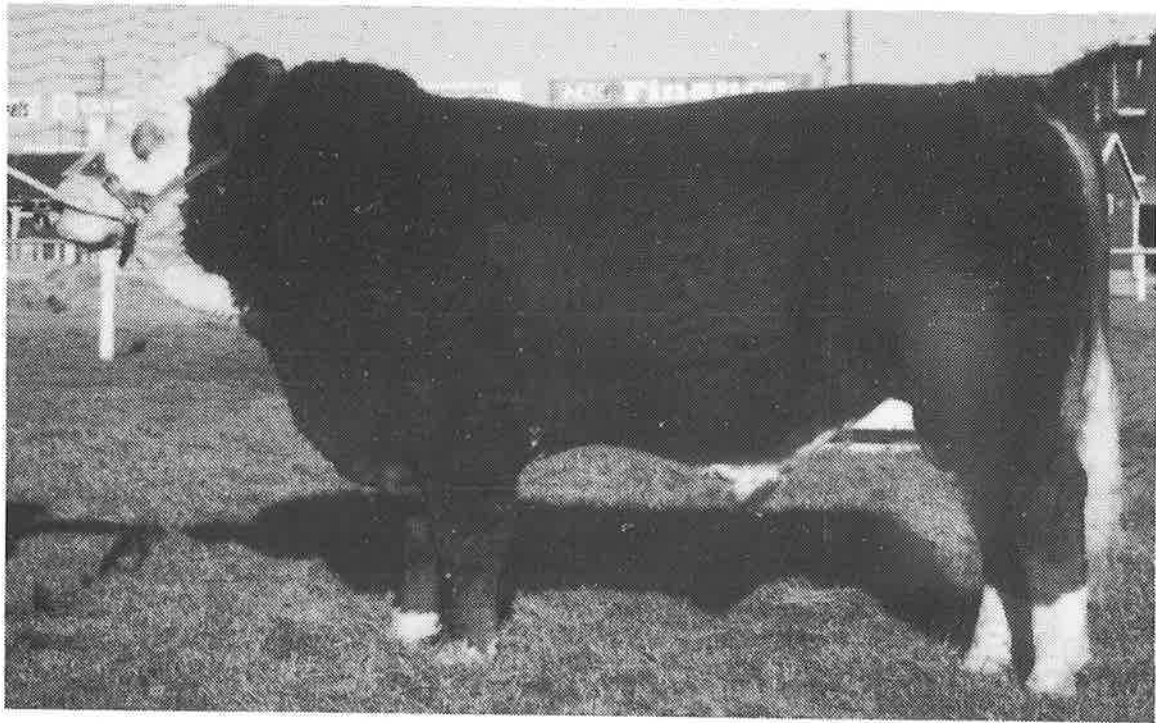
---

# **new zealand simmental**



**summer issue-january 1987-number twenty six**

# **RISINGHOLME**



'RISINGHOLME ROYAL' TOP PRICED BULL AT THE SOUTH ISLAND SALE 1986. WEIGHT, OVER 900 KGS ON SALE DAY. WE HAVE 20 CALVES BY HIM — THE BEST CALVES WE HAVE HAD FROM ANY SIRE. RISINGHOLME ALSO SOLD THE TOP PRICED FEMALE AT THE 1986 SOUTH ISLAND SALE.

THE CROSSON FAMILY WISH TO ANNOUNCE THAT THE RISINGHOLME HERD IS INTACT — UNDER NEW OWNERSHIP BUT SAME MANAGEMENT.

THEY WISH TO THANK ALL WHO OFFERED GRAZING AND SUPPORT IN THEIR RECENT TRAUMATIC EXPERIENCE.

ENQUIRIES & INSPECTION WELCOMED

**CROSSON BROS.,**

**"RISINGHOLME"**

STAN CROSSON  
CHIEF HERDSMAN

No. 2 R.D. TIMARU

# THE SIMMENTAL CATTLE BREEDERS' SOCIETY OF NEW ZEALAND (INC.)

250 OXFORD TERRACE, CHRISTCHURCH 1, NEW ZEALAND.  
P.O. BOX 13-142, ARMAGH STREET, CHRISTCHURCH. Phone 793-166

## Contents

|                                 |    |
|---------------------------------|----|
| Editorial . . . . .             | 1  |
| People . . . . .                | 3  |
| Profile . . . . .               | 4  |
| 1986 Royal Show. . . . .        | 6  |
| Sales . . . . .                 | 9  |
| Technical. . . . .              | 12 |
| Simbeef . . . . .               | 15 |
| Shows . . . . .                 | 18 |
| Simmentals Everywhere . . . . . | 25 |
| Club News . . . . .             | 26 |
| Miscellaneous . . . . .         | 28 |

## Advertisers

Risingholme—D.S. Crosson  
Pinelee Simmentals—G. & L. Bain  
Gayley Simmental—S. & G. Timperley  
Rufford Simmentals—T. Parr  
Brocade Simmentals—  
H. & J. McIntyre  
Avon Park Simmentals—  
D. & M. Carter  
Coopental Stud—N. & D. Barnett  
K.G.M. Simmentals—K.R. Hinton  
Ponui Island Simmentals—  
P. & D. Chamberlain  
Wai-iti Rotomara Simmentals—  
P. McWilliam  
Parekarangi Trust—C. Billing  
Rissington Simmentals—  
J. & S. Absolom

## Office Staff

Ian S. Johnstone  
(Secretary/Manager)  
Phone: Christchurch  
(Bus.) 793-166  
(Pvt.) 487-572

Mrs Ann Boyce (Secretary)  
Mrs Yvonne Kingsland  
Mrs J. Smith (Part time)

## EDITORIAL

Our last editorial was directed at a positive attitude. Despite a year which to our older generation farmers must have had echoes of the 'thirties' our Simmental year has been positive — we have made progress despite a halving in prices and farming incomes. Membership has steadily increased and continues to do so. The use of Simmental bulls in the commercial situation continues to expand. Most heartening has been that we have held our relativity in the market place in both weaner Sales and fat pens. Our success has been positive as has the attitude of our members.

## COUNCIL MEMBERS

### President:

A. B. Perry, Penny Road  
R.D. 9, Palmerston North  
Phone: Rongotea (063248) 772

### Vice President:

D. C. Carter, Manor Farm, R.D. 1,  
Lyttelton.  
Phone: Christchurch (03) 299-731

### Councillors:

J. P. Absolom, Rissington  
R.D. 4, Napier  
Phone: Rissington (070295) 836  
N. J. Barnett, Arohena, No. 7 R.D.,  
Te Awamutu  
Phone: Pukeatua (08224) 820  
J. D. Graham, Waingaro, R.D. Parnassus  
Phone: Parnassus (05132) 809  
L. E. McLachlan, Clarendon, R.D. 1,  
Outram  
Phone: Milton (02997) 4643

W. A. Rouse, East Dome, Five Rivers,  
R.D. 3, Lumsden  
Phone: Lumsden (0228) 7621

J. B. Scott, Roberts Road, R.D. 2,  
Cambridge  
Phone: Maungatautari (071232) 864

## CHAIRMAN OF COMMITTEES

FINANCE: A.B. Perry TECHNICAL: N.J. Barnett,  
PROMOTION: J.P. Absolom SALES: J.D. Graham

# **PINELEE SIMMENTALS**



## **'RISINGHOLME NAPOLEON'**

**ALL BREEDS SUPREME CHAMPION OTAGO A & P  
SHOW 1986**

**SEMEN IS AVAILABLE FROM 'NAPOLEON'.**

**BULLS AVAILABLE FOR SALE THIS SEASON.**

**Inspection welcome**

**Graeme & Lorraine Bain 'Pinelee'**

**2 R.D. Outram, Otago Phone Dunedin 773-845**



# People

## SOCIETY FOURTH PRESIDENT

At a Meeting of Council following the Annual General Meeting in Palmerston North in June, Alan B. Perry of Waimiro, Rongotea was elected the Society's fourth President in its fifteen years of establishment.

A Councillor in his fifth year he has been breeding Simmentals since 1973. He runs a large mixed farming property just north of Palmerston North with sheep, crop and cattle and a recent diversification in horticulture. The Waimiro Stud has in recent years become involved in showing and with our major Sales with success. Following a visit to North America in 1984 the bloodlines of this stud have been expanded by importation of embryo and semen from Canada. Mr Perry is married with two school age children.



## *New Year Greetings*

TO OUR MEMBERS, ASSOCIATES  
AND FRIENDS, BOTH HERE AND  
OVERSEAS, BEST WISHES FOR  
A HAPPY & PROSPEROUS 1987.

IAN, ANN, YVONNE & JEANETTE  
Simmental Office.

## VICE-PRESIDENT

A new Vice-President was also elected in June. David C. Carter of Banks Peninsula has had extensive involvement with Simmentals, firstly in managing and operating one of the largest transplant centres in the country and more recently in running one of the major Simmental herds in the South Island, the Avon Park stud, which was established in 1973.

With his wife, Melinda, he runs an extensive hill country property overlooking Lyttelton Harbour.



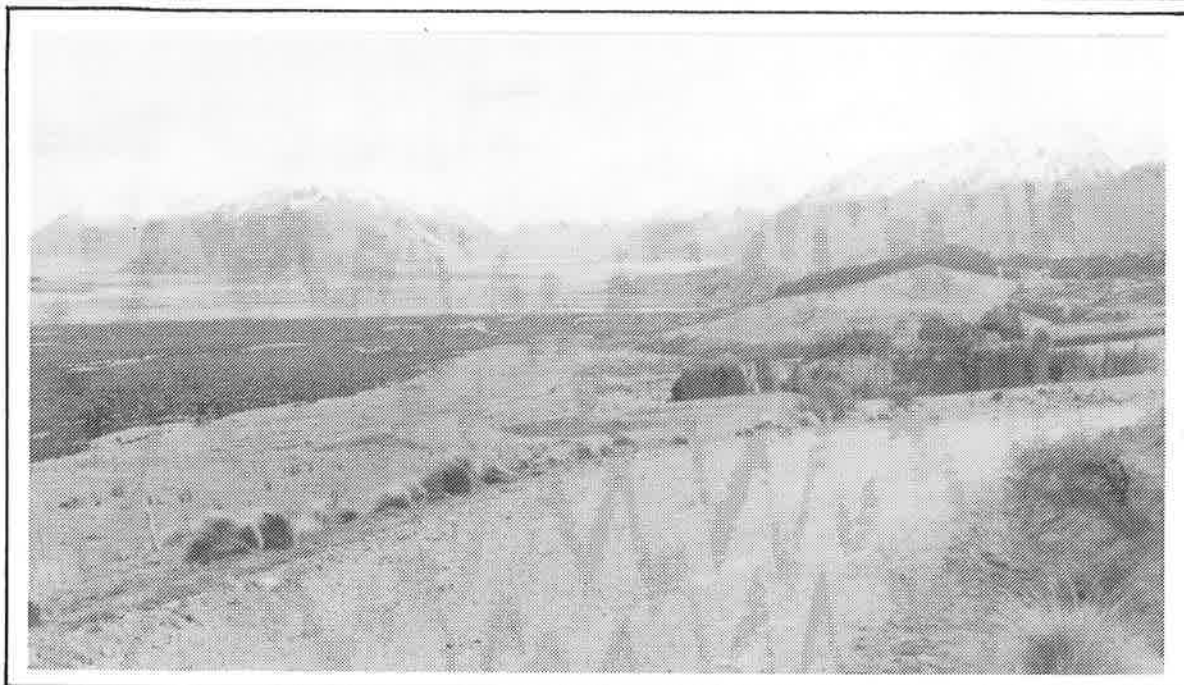
COUNTRY LIFE PHOTO (G. MAY)

## SIMMENTAL COUNCIL 1986/87

At the North Island Sale in June, opportunity was taken to photograph our assembled Council, something that has not been done before. The result is an excellent picture showing left to right: John Scott (Cambridge), Alan Perry (President, Rongotea), John Absolom

(Napier), Lachie McLachlan (Outram), Ian Johnstone (Secretary/Manager), Woodford Rouse (Five Rivers), Neil Barnett (Arohena), Don Graham (Parnassus), David Carter (Vice-President, Banks Peninsula). Photo By Courtesy Country Life.

# Profile



Peak Hill Station is located on the north bank of the Rakaia river in western Canterbury some seventy miles from Christchurch. It is on the threshold of the Southern Alps in magnificent surroundings with a backdrop of the headwaters of the Rakaia, the Wilberforce and the Mathias rivers which join a few miles above the property to form the Rakaia river proper one of the well known and major eastern flowing rivers of the South Island.

The Station itself is of some 5,000 acres stretching from the river floor across terrace country to an altitude of over 4,000 feet on the northern side and bounding on Lake Coleridge. Typical of its kind, it is, apart from the developed areas on the flats and terraces in native pasture, rising steeply to the ridge with a westerly aspect. The homestead set at 1,500 feet is set in attractive tree planted surroundings reflecting the early settlement of the Station. Peak Hill is farmed by two brothers of the Groters family and the property has been in the family since the first world war. Stocking on Peak Hill is 5,000 halfbred sheep, 200 adult deer plus young stock, commercial Simmental cross cows and a developing Simmental stud, in total around 100 females.

Michael and Johan Groters have been on the Station for twelve years and took over when their parents moved to town four years ago. Now they live with their young families in the two homesteads on the property. The day to day running of Peak Hill is shared between the brothers but each has his own special project. Michael runs the Simmental herd and Johan runs the deer, each assisting the other as necessary.

Simmentals first went to Peak Hill in 1976. Herman Groters, who still has interest in the cattle, entered a temporary partnership with one of the early members of the Society, Bob Webb (Herd No. 282) who had sold his property but retained his cattle and wanted agistment. From the initial 45 half-breds and threequarter breds the herd has expanded to its present size and status which saw, last year, the first drop of purebred calves in number. Many of the original cows are still in the commercial herd producing for the weaner market.

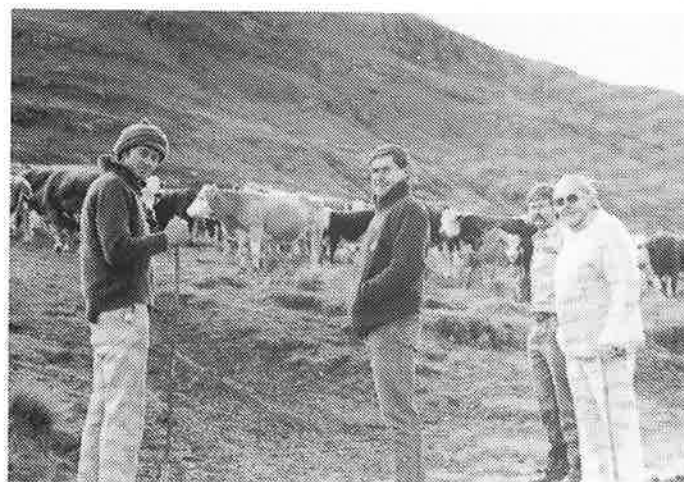
The station, in its location and altitude has a hard and long winter with snow on the high tops and not infrequently to homestead level. This creates an environment which is particularly hard on young stock and this year for the first time weaners from the stud

herd are being wintered off the property at lower altitudes to give them a better chance to grow out in a kinder climate. The move is not dissimilar to some other high country stations who do the same with young sheep.

The development of the Simmental stud is keenly pursued by Michael and indeed the Groters family. Already we have seen animals in the show ring and sales arena from this herd and will see more of them. They are strong supporters of all Simmental events and there is seldom any function in Canterbury where they are not represented.

Simmentals in their country of origin are mountain cattle and this inheritance is strongly illustrated on this property where they thrive in a hard climate and steep terrain.

It is co-incidental that these animals of European origin graze alongside other cloven hoofed animals who have a similar background. Many of the deer on Peak Hill have come from the descendants of the German herd released in the headwaters of the Rakaia river at the turn of the century.



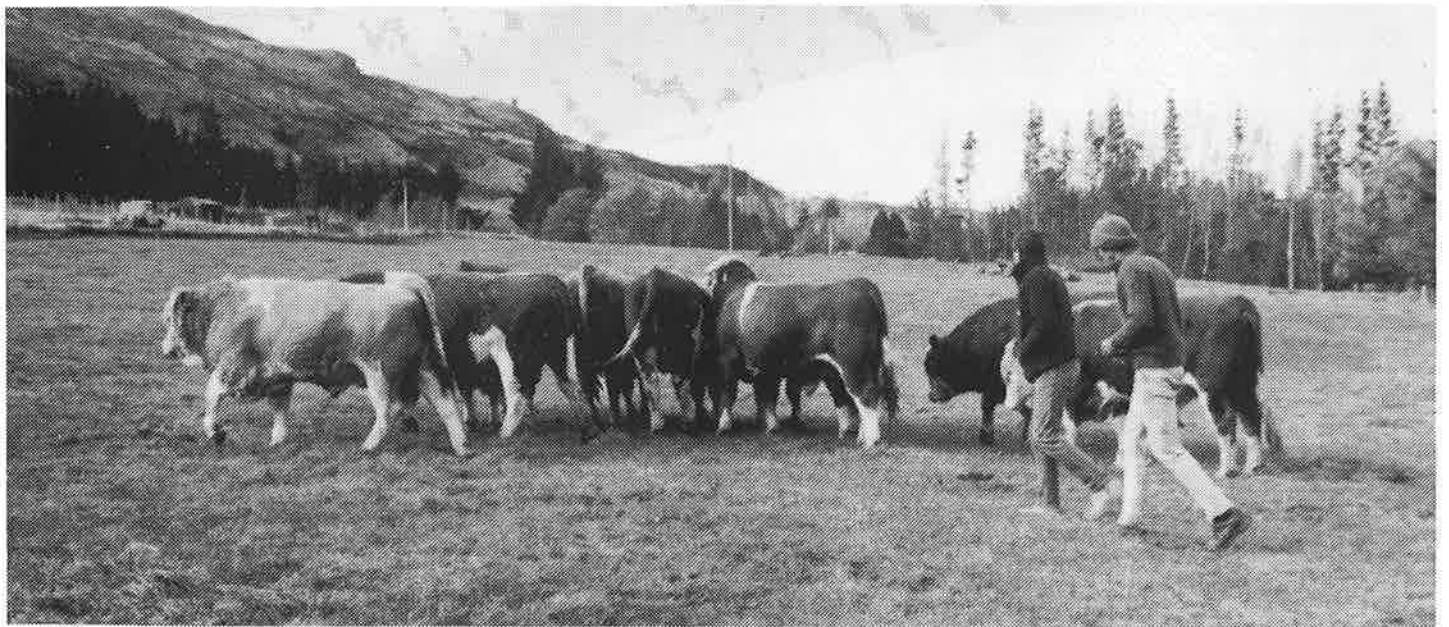
*l-r. Michael Groters, David Carter, Johan Groters and Bob Webb inspect the commercial herd.*



# Profile



*The Stud cows and their calves just before weaning.*



*David Carter and Michael Groters make an appraisal of the two year old sale bulls.*



*The commercial herd brought down off the hills for our visit.*

# 1986 ROYAL SHOW

## PALMERSTON NORTH

The Editor was overseas at the time of the Royal so cannot report at first hand. The Judge Mr Peter McWilliam has provided me with some comments which I repeat for you.

### Judges comments:

"Very impressed with the standard of cattle and the presentation. I was looking for length, volume and structural correctness. The champion bull was outstanding, he had perfect feet and legs, showing extreme length and beautifully smooth shoulders. The junior bulls were particularly impressive, and presented the hardest task for the Judge. They were a very even line up with little between the top six

or seven bulls, but extra length won on the day. The champion yearling bull was a most correct and smooth animal.

The senior females were displaying all the feminine characteristics of the breed with the champion showing structural correctness and extra length, she had a magnificent bull calf at foot. It was a pleasure to see such soundness in a 9 year old cow. The yearling females were a most appealing line and again I found it quite difficult to separate the top heifers. I was looking for young females that were smooth through the neck and shoulder and showing good signs of good udder development, I certainly found that in the champion and reserve champion."

## CLASS RESULTS AS FOLLOWS:

### COW & CALF, OVER 3 YEARS (1)

1st Glen Anthony Harmony. (Extra CSA — Glen Anthony Excel) A.H. & G.M. Thompson. Waipukurau

### COW & CALF, 3 YEARS (1)

1st Glen Anthony Prestige, (Glen Anthony Lustre — Glen Anthony Excel) A.H. & G.M. Thompson.

### HEIFER 2 YEARS (2)

1st Winslow Rosana (Tokaweka Kaiser — Sherwood BK6) A.B. & P.R.W. Maxwell.

2nd Glen Anthony Romance (Dunmore Hansa — Glen Anthony Lillie) A.H. & G.M. Thompson

### HEIFER SENIOR YEARLING (4)

1st G.R. Grace Regal (Extra CSA — Tudhoe Park BH1) Ailsa Farm Ltd., Kimbolton.

2nd Glen Anthony Twilight (Glen Anthony Lustre — Glen Anthony Limelight) A.H. & G.M. Thompson.

3rd Glen Anthony Triumph (Glen Anthony Lustre — Glen Anthony Excel) A.H. & G.M. Thompson.

4th G.R. Gemma Regal (Extra CSA — Tudhoe Park BH1) Ailsa Farm Ltd., Kimbolton

### HEIFER JUNIOR YEARLING (8)

1st Tokaweka Trinity (Hockenhull Magnum — Motapu BG1) J.R. Houlbrooke. Waipu.

2nd Tokaweka Treasure (Toko AM98 — Tokaweka Priceless) J.R. Houlbrooke.

### PAIR YEARLING HEIFERS (3 PAIRS)

1st Ailsa Farm Ltd.

2nd J.R. Houlbrooke

3rd A.H. & G.M. Thompson.

### BULL OVER 3 YEARS (1)

1st Springbrook McGregor (Beat CSA — Risingholme BJ3) Ailsa Farm Ltd., Kimbolton.

### BULL 3 YEARS (1)

1st Springbrook Sir Lancelot (Pendeen Lancer — Morchard BK86) Ailsa Farm Ltd.

### BULL 2 YEARS (3)

1st Dunshaughlin Ruffian (Blythe Muldoon — Tipapa Fiona) T.J. Murphy. Waipukurau.

2nd Risingholme Royal (ABC Big-n-Tall — Danim AJ1) Ailsa Farm Ltd.

3rd Tokaweka Rascallion (Scottish Striker — Pukehuia BJ2) J.R. Houlbrooke.

### BULL SENIOR YEARLING (7)

1st Herrington Tarzan (East Dome Norton — Mararoa Julie) Jamie Proude. Ohakune.

2nd G.R. Great Regal (Extra CSA — Tudhoe Park BH1) Ailsa Farm Ltd.

3rd G.R. Giant Regal (Extra CSA — Tudhoe Park BH1) Ailsa Farm Ltd.

4th Glen Anthony Tundra (Rotomara Micodimus — Russley Nelda) A.H. & G.M. Thompson

### BULL, JUNIOR YEARLING (4)

1st Dunshaughlin Typical (Maeratotara Marquis — Blythe Marshmellow) T.J. Murphy. Waipukurau.

2nd Coopental Terrific (L & S Lopez — Blythe Greta) N.J. & D.A. Barnett. Arohena.

### NOTE:

Unfortunately the Group class and Progeny class results were not received with the other results.

### CHAMPIONSHIPS

Senior Champion Cow and R.H. Kerr Salva. Glen Anthony Harmony A.H. & G.M. Thompson.

Reserve Senior Champion Cow. Glen Anthony Prestige. A.H. & G.M. Thompson.

Champion Heifer and Silver Jug. G.R. Grace Regal. Ailsa Farm Ltd.

Reserve Champion Heifer. Tokaweka Trinity. J.R. Houlbrooke.



# 1986 ROYAL SHOW

## PALMERSTON NORTH



*Tim Murphy of Waipukurau receives the Meat & Wool Cup from Mr Peter Johnson of Weddel Crown at Hastings. His entry 'Dunshaughlin Ruffian' was also Supreme Champion Simmental at the Royal.*



*Michael Coombs of Ailsa Farm, Kimbolton, with his Champion 3 year old bull 'Springbrook McGregor' at the Royal.*

# 1986 ROYAL SHOW

## PALMERSTON NORTH

Senior Champion Bull. Dunshaughlin Ruffian. T.J. Murphy.

Reserve Senior Champion Bull. Springbrook Sir Lancelot. Ailsa Farm Ltd.

Junior Champion Bull and Silver Jug. Herrington Tarzan. Jamie Proude.

Reserve Junior Champion Bull. Dunshaughlin Typical. T.J. Murphy.

Supreme Champion Simmental and Society Challenge Salva. Dunshaughlin Ruffian. T.J. Murphy.

Coopental Performance Class and Coopental Trophy. Coopental Terrific. N.J. & D.A. Barnett.

### INTERBREED COMPETITION

Yearling Bull

1st Angus

2nd Simmental ..... Ailsa Farm Ltd.

Yearling Heifer.

1st and 2nd. Simmental ..... Ailsa Farm Ltd.

3rd Simmental ..... A.H. & G.M. Thompson.

Meat & Wool Cup.

1st

2nd

3rd

4th

Shorthorn

Charolais

Angus

Simmental T.J. Murphy



## GAYLEY SIMMENTAL STUD

**'SHERWOOD EXTRA SPECIAL III', SEMEN AVAILABLE.**  
**CALVING RESULTS ARE EXCELLENT FROM HEIFERS UNDER OUR MANAGEMENT.**

**JOIN US AT THE KAIKOHE SALEYARDS**  
**JULY 10th 1987, 1 p.m.**  
**FOR OUR 3RD ANNUAL BULL SALE**

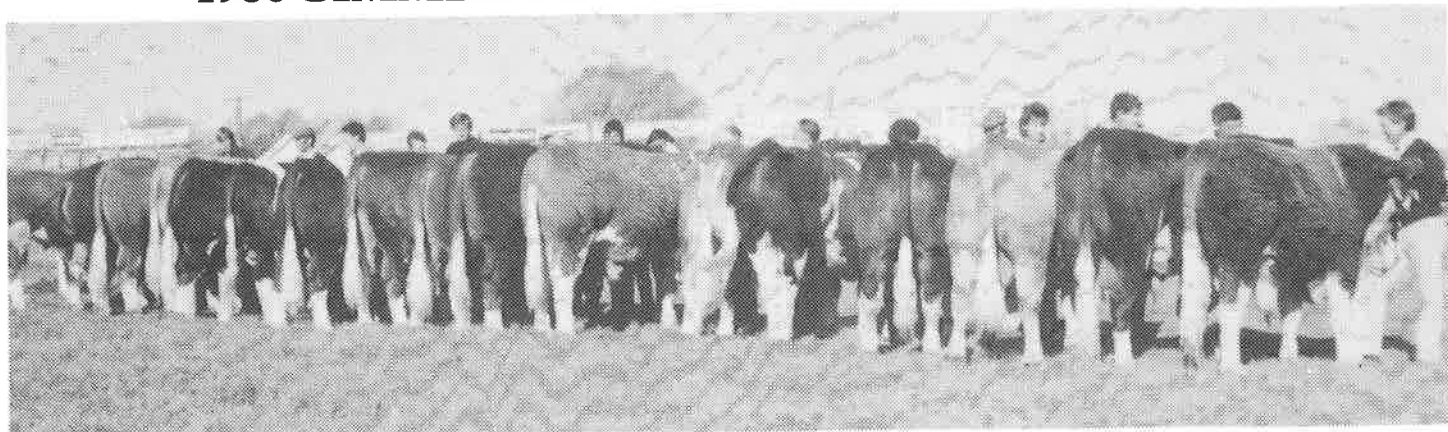
(APPROXIMATELY 20 RISING 2 YEAR OLD BULLS)

**ALL ENQUIRIES WELCOME**  
(WE ARE MEMBERS OF BEEFPLAN)

**STAN & GAE TIMPERLEY, Phone 646 Kawakawa**  
R.D.1. MOEREW, BAY OF ISLANDS

# Sales

## 1986 SIMMENTAL SALES SHOW STRENGTH

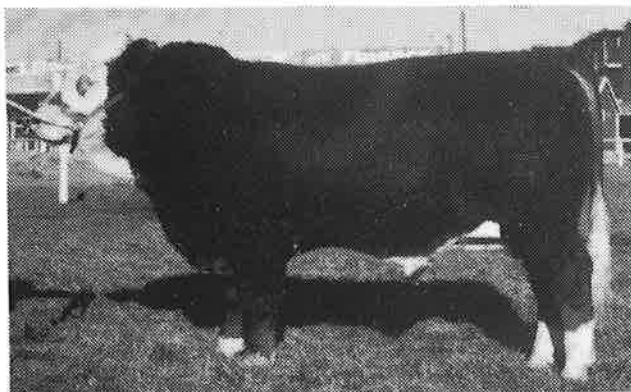


*A line up of some of the entries at the 1986 South Island Sale. The parade held on an unusually mild winter day, proved very popular.*

In a farming season that can only be described as punitive the Simmental breed has shown its strength and acceptance in the annual series of Sales held throughout the country.

The two main events in the Sale calendar were the Annual South Island and North Island Sales held in June.

The South Island Sale held at Christchurch on the 5th of June drew entries of thirty-five bulls and ten females from throughout the Island with the presentation of entries well up to standard. At the first major Sale of the season the opening lots were approached with some caution which resulted in some quality animals realising what to vendors must have been comparatively disappointing prices. To their credit they met the market and the twenty-four bulls sold at auction realised an average of \$1,808. Of those that were passed all but a few were sold afterwards at realistic prices. A gallery of some three hundred people attended the Sale. Top price of the day was \$5,500 for an excellent twenty-two month old bull offered by D.S. Crosson of Timaru. This bull had been shown with great success at the 1985 Royal and at Christchurch. The purchaser was Ailsa Farms of Ohingaiti in the Manawatu who have been regular purchasers at the South Island Sale in the past few years.

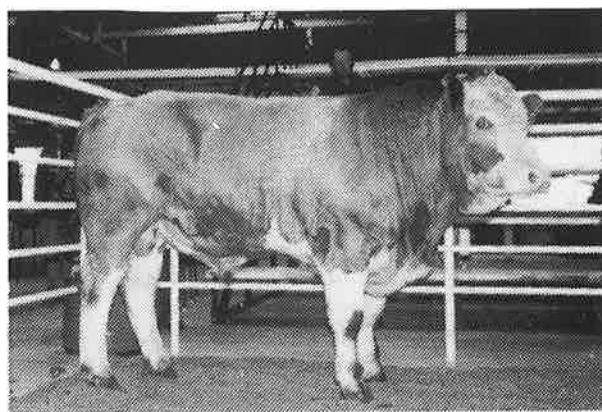


*Top priced South Island entry 'Risingholme Royal' sold by D.S. Crosson.*

Four bulls realised between \$2,000 — \$3,000 with the remainder of the catalogue from \$1,000 upwards. Females met a reasonable market with an average of \$2,300 for the six sold. Top price was \$3,600 for an attractive heifer, again sold by D.S. Crosson.

In comparison to the 1985 Sale the average was about half but on the day prices were considered realistic in reflection of the whole farming scene.

The North Island Sale held in Palmerston North on the 17th June catalogued twenty-six bulls and one female. A very large gallery followed the Sale which was decidedly more spirited than the South Island event with an average of \$3,660 for the twenty-two bulls sold. Top price was \$10,500 for a twenty-six month old bull of Extra bloodline sold by J. Hammonds of Cambridge to J. & H. Paterson of Ida Valley Station in Central Otago.



*Top priced North Island entry 'Rotomara Radcliff' sold by J. Hammonds of Cambridge*

Another excellent young bull offered by H. McIntyre of Fielding was sold at \$9,000 to H.J. Smyth of Dannevirke. Three other entries made in excess of \$4,000 with five at over \$3,000. The only female in the Sale made an excellent \$4,800 and was offered by A.H. & G.M. Thompson of Waipukurau and purchased by R. Cameron of the Coromandel.

At our two major Sales there are three Challenge Trophies and this year these were awarded as follows:-

R.G. Macdonald Memorial Trophy (South Island) for highest priced bull. D.S. Crosson with his entry 'Risingholme Royal' \$5,500.

R.G. Macdonald Challenge Trophy (North Island) for highest priced bull. J. Hammonds with his entry 'Rotomara Radcliff' \$10,500.

Pacific Freezing Challenge Trophy (Best Export Type, North Island (1986)). H. & J. McIntyre with 'Brocade Rufus'.

In addition to these Trophies MSD/AGVET (Merck Sharpe & Dohme (NZ) Ltd) generously presented three packs of Ivomec. This Company has been extremely supportive to the Society over the years at both our Sales and Shows.



# Sales



*The President's wife, Clare Perry, presents the Pacific Freezing Trophy to a proud Hugh McIntyre of Apiti.*

Top averages for the South Island and North Island Sales were as follows:-

South Island: D.S. Crosson, three sold \$7,900 gross, average \$2,633  
A.A.T. Partridge, two \$4,500, average \$2,250  
C.J. Patterson, three \$5,300, average \$1,767  
E.W. Turrell, three \$5,300, average \$1,767  
Levels Farming, three \$5,100, average \$1,700  
D.C. & M.J. Carter, two \$2,900, average \$1,450  
N.D. Oliver, two \$2,400, average \$1,200.

North Island: P. Weenink, two gross \$10,900, average \$5,450  
A.H. & G.M. Thompson, three \$11,000, average \$3,667  
G.G. Pearce, five \$14,200, average \$2,840  
J.B. Scott, two \$5,200, average \$2,600  
A.B. Perry, two \$4,900, average \$2,450  
A. & M. Aukaha, two \$4,800, average \$2,400  
Lands & Survey, two \$4,400, average \$2,200.

Between and around these Sales a number of other provincial and private (on farm) Sales have been held with very satisfactory results.



Rissington Station, Napier held their fourth Annual Bull Sale on the 18th June offering a very large catalogue of seventy-two bulls, all of which sold at auction realizing an average price of \$2,491. The twenty-two purebred bulls catalogued as transferable averaged \$3,304 with a top price of \$5,500. In this section three yearling bulls by Bar-5-Dignified a top Canadian sire, were sold at just over \$2,000 each.

Rissington Sale has become, in a very short time, a feature of the bull selling season and this year demonstrated the confidence of purchasers in what is offered by the Absalom family. Bulls from this Sale were dispersed throughout Hawkes Bay with the main contingent going to Gisborne.

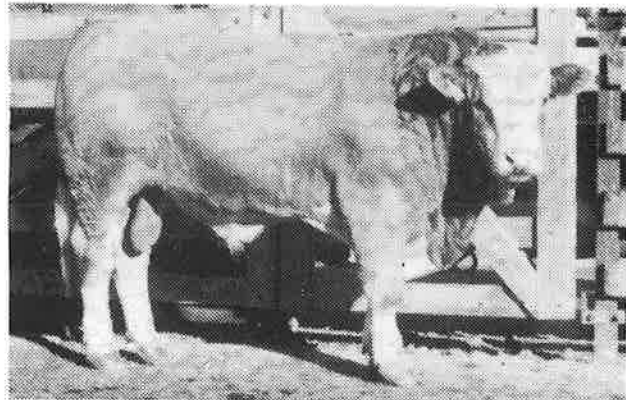
Other Sales held in the June/July Series:

J. Middleton (Pokeno on-farm) Eleven bulls grossed \$16,400, average \$1,463, top \$2,300.

W. Eccles, (Te Aroha on-farm) Seventeen bulls grossed \$24,000, average \$1,409, top \$2,100.

Ailsa Farms (Ohingaiti on farm) Twenty-four bulls grossed \$52,000, average \$2,200, top \$4,000.

J.R. Houlbrooke (Waipu, Northland) Twenty-two bulls grossed \$49,200, average \$2,236, six selling at over \$3,000.

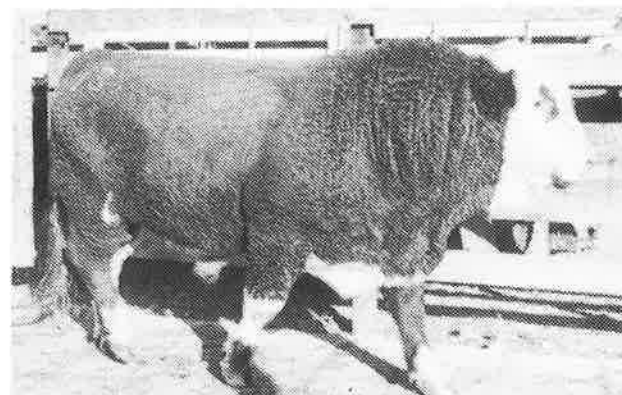


*One of the top priced bulls sold at Temuka on account of A.R. Midgley. (\$2400)*

South Canterbury Club (Temuka) Twenty bulls grossed \$28,800, average \$1,440, top \$2,400.

Southland Club (Mossburn) Twenty bulls grossed \$27,000, average \$2,600, top \$2,600.

Waikato Club (Frankton) Thirty-five bulls grossed \$66,200, average \$1,892, top \$5,400.



*First time vendors E.J. & D. J. Conlan of Oamaru got \$2400 for their entry.*

## CANTERBURY CLUB HOLD COMMERCIAL SALE

The Club staged its first Commercial Sale at the Canterbury Show grounds on the 21st of August. The twenty-three bulls put forward were generally of very good standard and all that was lacking was a gallery with buying strength. Only a handful sold and in hindsight the Sale was probably too late in the season and affected by the current economic situation.

Earlier in the week another Sale of traditional breeds suffered a similar fate at the same venue.

# Sales

## LEVELS FARMING COMPANY TRIES NEW SALE SYSTEM

A new concept in the Sale of cattle was introduced in June by the Levels Farming Company, Timaru.

It was only a qualified success but the breeder, Mr R.N.S. Cox is not down hearted.

At the open day, Simmental cattle (rising two year old bulls, rising two year old in-calf heifers and cows with calves at foot) were offered for sale by private treaty instead of the more usual auction.

However, only half the cattle on offer were sold, and Mr Cox acknowledges that it was the present economic climate that prevented a better response.

"Naturally, I would have been pleased if there had been a total clearance but what happened today is a sign of the times," he said. "But I intend running the sale next year."

Prices were placed on each lot number or group of lot numbers.

At 1 p.m. after an hour and a half for inspection, prospective buyers were then able to indicate an intention to buy. It was on a first-come, first-served basis.

The Sale has a number of advantages for the vendor and the buyer. It is a more relaxed form of selling for people intimidated by the bidding system at auction and in a number of ways it is less painful for the vendor.

By holding such a Sale at an open day on the property, the vendor avoids paying auction entrance fees, and avoids transport worries to or from the auction. It also removes client ranking order problems associated with private individual treaty sales.

The following Sales were made:

Rising two year old bulls:

Lot 7, \$3,000 (buyer, Mr A.J. Scorgie, Lee Stream, Outram);

Lot 13, \$1,750 (Mr A.A. Innes, Black Forest Station, Mackenzie Country);

Lot 15, \$1,200 (Conlands Farm Co., Ashburton).

In-calf rising two year old heifers:

Lot 23, \$1,750 (J.N. & B.M. Tomlinson, Culverden);

Lot 24, \$1,750 (J.N. & B.M. Tomlinson, Culverden);

Lot 25, \$1,500 (Mrs J.C. Hall, Hororata);

Lot 27, \$1,750 (Wrightson NMA, Invercargill).

Lot 28, \$1,750 (Wrightson NMA, Invercargill).

Cows with calves at foot:

Lot 30, \$3,000 (Mr B. Logan, Hawarden);

Lot 32, \$4,000 (Wrightson NMA, Invercargill).

## LOT ORDER AT SALES

I have been asked frequently how we allocate our selling order or lot numbers at our two major Sales and why bulls are in two 'runs'. Most vendors know the system but many others obviously do not.

Once our Sale entries are finalised, those vendors who sold in the previous year are extracted and an analysis made of the number of animals each vendor offered through the ring (sold or passed) and the total monetary return received. This figure is divided by the number of animals offered and establishes his average. These previous vendors are then ranked in order from highest average to the lowest. The vendor with the highest average gets lot No. 1 position. If he has more than one animal his entries are divided between the two 'runs' in his average order. Once the averages and lot orders are established for the previous year's vendors those who have not sold before

or did not sell in the previous year are put into a straight marble draw for lot numbers. Again if they have more than one entry they are divided between runs in draw order.

This system has proven advantages. The vendor who had the highest average in the previous year is unlikely to put forward an animal or animals that lack quality so your Sale should open with a reasonable entry. The vendor who only has one animal does not run the risk of being at the end of the catalogue, he will always be somewhere in the first 'run'. Likewise a multi entry vendor, regardless of his ranking, does not have all his animals in one section of the catalogue — they are evenly spread.

The system is used in other livestock auctions and has proved to be the most equitable way of setting up selling order.

Another point sometimes asked about is our order of tie-lines. These are set-up so that vendors are placed on the tie lines starting with he or she who has Lot 1 but keeping cattle in their breeder groups. This makes for easy administration and care of the vendors' animals. They are together with the mates they have been with for weeks which lessens stress and 'agro' particularly with bulls. It also allows the vendor to present his entries to the potential purchasers on Sale day without having to dash all round the tie-lines which he would have to do if they were in strict lot order.



## RUFFORD SIMMENTALS

HERD No. 277  
(E.J. PARR)

This herd has been performance recorded and heavily culled since its establishment in 1973. Only top ranking progeny are retained as sale bulls.

Steer calves from this herd have consistently obtained top price at annual weaner sales held in South Canterbury.

The Rufford herd is run under commercial (or natural) conditions.

Enquiries and inspection welcome . . .

**CONTACT TED PARR  
MIDDLE VALLEY, R.D. FAIRLIE  
PHONE (056)27065**

# CONFORMATION AND LAMENESS

## — CAUSE AND EFFECT? **Technical**

A contributed article by Mrs Penny Wright, (B.V.Sc.) of Loburn North Canterbury. Penny and aviator husband Ian, run a small Simmental Stud on their Loburn property.



The relationship between conformation and lameness is a topic often debated and one for which there is very little hard evidence. Very little research in the form of breeding studies has been undertaken and most of the information has been gleaned from clinical reports and observations.

Everyone knows that lameness can be of great economic importance — cost of treatment and labour, decreased weight gain or body weight, decreased milk yield in cows, decreased libido and possible infertility in bulls and wastage due to premature culling. Yet the origin of many conformational features which predispose to lameness has yet to be definitely determined.

This article is an attempt to briefly outline what are considered to be desirable conformational features, what lamenesses are associated with undesirable features, what their origins are — are they inherited (genetic), congenital (born with, as a result of abnormal development but not genetic) or acquired (environmental, nutritional) and therefore how to avoid them.

Conformation can be described as the physical form of an animal and good conformation, with respect to soundness, as the kind of structure that allows all the forces of weight bearing and locomotion to be symmetrically directed along the strongest parts of the musculoskeletal system, such as the long axes of leg bones. This even distribution of the forces minimizes the wear and tear on bones and joints and therefore minimizes the incidence of lameness.

### **Desirable Conformation**

Ideally the angulation of the legs should be as shown in Figure 1. Unfortunately, it is a lot easier said than done to relate these angles taken from the long axes of the bones to the live animal. However there are certain structural features which are obvious from the outside, from which corresponding angles can be calculated as shown in Figure 2.

The way the legs are attached to the body is also important with respect to calving ease. The shoulder should have good slope and from the front be tapered towards the top. The pelvis should also have good slope. The greater the angle of the line drawn between the hooks and the pins of the pelvis and the horizontal, the greater will be the vertical diameter of the pelvis for the calf to get through and hence improved calving ease.

The hooves are the most important single feature of conformation of cattle pertaining to locomotion. It is generally considered that the majority of hoof deformities are acquired and that there may be a degree of genetic predisposition. Therefore, the hooves of

young animals (under two years) retained for breeding should be structurally perfect: without concavity of the wall, only slight concavity of the inside wall of the claw, the horn should be shiny and without ridges or grooves, the bulb of the heels should be rounded, the claws should be approximately equal size and the bearing surface adequate for the size of the animal. The front angle of the hoof should be the same as the angle of the pastern and the angle of divergence between the claws about 15°.

### **Common Deviations From The Desirable Joint Angles And Their Associated Lamenesses.**

In relation to susceptibility to disease the following general principles apply:—

- 1) Any decrease in angle i.e. more bend — the greater the strain on the associated ligaments, tendons and muscles.
- 2) Any increase in angle i.e. straighter — the greater the concussion experienced by the joints.
- 3) The greater the range of movement of a joint the greater its susceptibility to wear and tear e.g. the hip and stifle.

### **Hip And Stifle**

The straighter the angle of the stifle the greater the concussive forces and hence the greater the incidence of arthritis in these two joints. When the stifle is straight, the slope of the pelvis tends to be flatter and hence the risk of difficult calvings is greater. Calving problems can result in paralysis of one or both hind legs, hip dislocation or muscle rupture.

### **Hock**

The hock and stifle have a reciprocal arrangement of muscles and ligaments so that they flex and extend together, but this also means that if the hock is straight the stifle will also be straight. This generally results in a 'camped under' appearance and the potential for the problems described above. This 'posty' leg fault can also affect a bull's servicing ability and predispose to injury as a result of service accidents.

A decrease in the angle of the hock ('sickle hocks'), although aesthetically undesirable, is rarely associated with lameness. Cow hocks or bowed hocks cause uneven weight bearing on the claws which inevitably affects hoof growth.

### **Fetlock And Pastern**

Excessive slope to the pastern (a decrease in fetlock angle) puts excessive weight on the heels which can lead to ulceration of the heels, under-run sole and hoof overgrowth at the toe is inevitable. Very upright pasterns are usually associated with straight hocks, therefore that discussed above in 'hocks' applies. In the forelimb, the associated increase in concussion can lead to arthritis in the knee as well.

### **Shoulder And Elbow**

Upper foreleg conformation is not reported to predispose to lameness. Generally lameness in this area is the result of injury alone.

### **Knee**

These joints carry over half of the total body weight so any deviation from the desired straight knee can lead to abnormal wear of some of the joint surfaces in the knee with resultant arthritis.

### **Hooves**

Conformation of, or disease in the upper limb affects the stresses applied to the hoof. An uneven gait causes uneven weight bearing by the two claws. This leads



# Technical

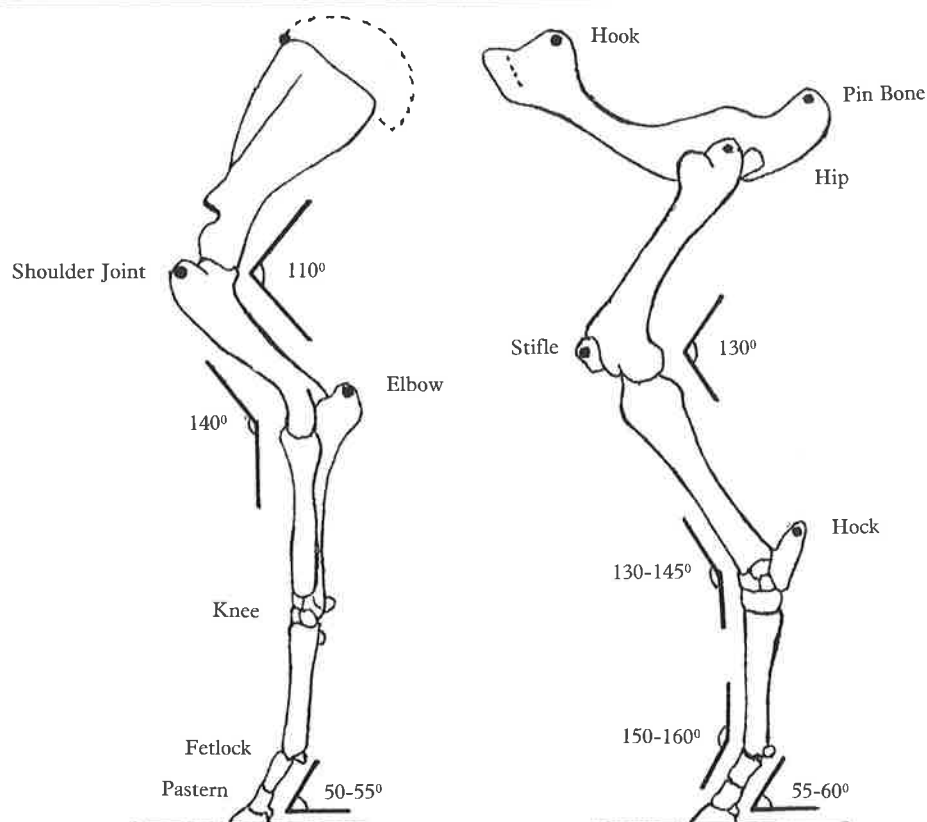


Figure 1. Desirable angulation of the joints.

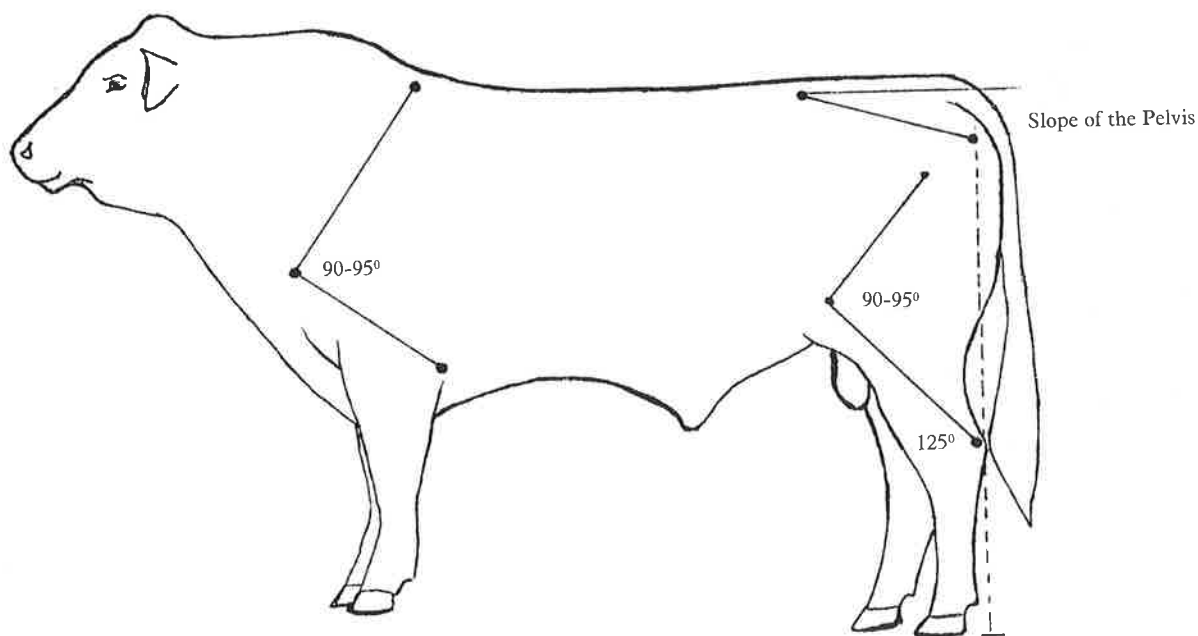


Figure 2. Structural features that can be seen or felt on the live animal. The line between the pins and the point of the hock should be vertical.

## References:

Amstutz, H.E., Bovine Lameness and Orthopaedics, Veterinary Clinics of North America, pp 25-39, Saunders 1985.

Greenough, P.R. et al, Lameness in Cattle, 1st Ed., Oliver and Boyd, 1972; 2nd Ed., Wright — Scientifica 1981.

Greenough, P.R., the Conformation of Cattle, In Proceedings of the NZVA Dairy Cattle Society, pp 81-92, Massey University, 1985.

Roberts, S.J. Veterinary Obstetrics and Genital Diseases pp 51-56, 2nd Ed. 1971.

# Technical

to differences in wear and length of the claws and hence causes an apparent hoof abnormality. For example, the greater incidence of outside claw lameness in cows with large udders. More importantly, the reverse is also true. Hoof diseases affect hoof shape which can cause an abnormal stance and stride which may be confused with undesirable conformation. So great care has to be taken when making a judgement in these cases.

Overgrowth of hooves is one of the most frequent causes of abnormal gait. When the toes are too long the front wall of the hoof forms a more acute angle with the ground and is no longer at the same angle as the pastern. More weight is put on the bulbs of the heels and more strain on the suspensory ligaments, the pastern and the fetlock. The wall of the hoof may flake and crack, the heels may erode and an under-run sole may develop.

## Where Do These Undesirable Conformational Features Come From?

Table 1 is an attempt to summarize present knowledge. As stated earlier, much of this information is based on clinical reports rather than breeding studies. Where both genetic and acquired causes are listed the condition can also be the result of some sort of injury or a nutritional, environmental or

managerial effect.

Therefore, if you get an abnormal calf or an older animal that develops an undesirable feature, by consulting the Table you can get some idea of its likely origin to help you make a decision on the future of the animal. The majority of the features proven to be genetic in origin are quite obvious and of little economic significance. Two exceptions would be hip dysplasia and cork screw claw which may take months or even years to show up.

Unfortunately, much less is known about those features which can be described as undesirable because they predispose to unsoundness. The majority of lameness associated with them are considered to be due to an inherited predisposition and environmental effects.

Overall, general limb and claw conformation has been shown, in a study by the English Milk Marketing Board, to be inherited to the extent of 45% and 51% respectively.

Also, it is pertinent to note that a survey conducted by the World Simmental Federation found that of 22% of the animals rejected by inspectors as being unsuitable for breeding due to structural problems of legs and hooves, 70% of these were in the hindlegs, 17% in the hooves, 10% in the pasterns and 3% in the forelegs.

**Table 1. Origins of Various Undesirable Conformational Features.**

| Undesirable Conformational Features                       | Hereditary                        | Congenital | Acquired                                   |
|---|-----------------------------------|------------|--|
| <b>Limbs</b>  |                                   |            |  |
| Dwarfism ("Bull dog" calves)                              | —                                 | —          |  |
| Crooked calf disease (arthrogryposis)                     | —                                 | —          | Lupin Toxicity during pregnancy.           |
| Double Muscling (Muscle Hypertrophy)                      | —                                 | —          |  |
| Contracted limbs  | —                                 | —          |  |
| Missing limbs   | —                                 | —          |  |
| Hip dysplasia (malformed hips)                            | —                                 | —          |  |
| Straight hocks  | —                                 | —          | Confinement and Overfeeding                |
| Sickle hocks  | —                                 | —          | Secondary to hoof overgrowth.              |
| Cow hocks   | —                                 | —          |  |
| Flexed pasterns and fetlocks (over on the fetlocks)       | —                                 | —          |  |
| Weak sloping pasterns                                     | —                                 | —          | Secondary to hoof overgrowth.              |
| Fused joints (ankylosis)                                  | —                                 | —          |  |
| Swollen joints — Rickets                                  | —                                 | —          | Vitamin D, Calcium & phosphorus imbalance. |
| — Arthritis   | —                                 | —          | Infection, wear & tear                     |
| Boney lumps (exostosis)                                   | —                                 | —          | Fluorine Toxicity                          |
| <b>Hooves</b>   |                                   |            |  |
| More than two claws                                       | —                                 | —          |  |
| Fused claws   | —                                 | —          |  |
| Missing claws   | —                                 | —          |  |
| Splayed claws   | —                                 | —          |  |
| Corkscrew claw  | —                                 | —          |  |
| Beak claw   | —                                 | —          |  |
| Outside claw smaller than inside claw                     | —                                 | —          |  |
| Hoof overgrowth (Scissor feet)                            | Possible inherited predisposition | —          | Environment                                |
| Fibrous growth between the claws (Interdigital granuloma) | —                                 | —          | Environment                                |
| Vertical cracks   | Possible inherited predisposition | —          | Environment                                |

# Simbeef

## HAWKES BAY CARCASS WINNER

In the annual Beef Cuts Competition held at Pacific Freezing N.Z. Ltd., (Hastings) in July Gerald Kemp of Gisborne won, for the second time, the Guardian Trust Challenge Cup for Supreme Champion on the Hooks. His Simmental/Angus cross steer in the under 2 year class gained a total of 412.28 points. The Rib-Eye measurement was in excess of the N.Z. Meat Board scale receiving 70 points. (Their maximum scale measurement gives 60 points!)

With another entry Gerald won the Lomas Cup for the most profitable beast in the competition. This animal, also under 2 years, weighed 414 kilograms and returned a yield of 70.04% which on the low schedule at that time was worth \$32 per month to its owner!

Congratulations Gerald.

## NELSON COMPETITION

At the Nelson A. & P. Association annual beef competition held in July, Simmentals made their mark. Long time member, Rupert Martin and his wife, had outstanding success.

On the hoof 1st, 2nd and 4th placings all went to Simmental cross steers. On the hook in the heavy weight class 1st and 2nd went to the same steers.

A total of twenty-eight animals were entered in the competition. The carcass weight of the winning entries was 416 kg and 382 kg with a yield of 69.51% and 69.05% respectively. The Ribeye of the winning entry measured 105 sq.cm. which the judge claimed was the largest he had ever judged.

## DANNEVIRKE STEERS MAKE PREMIUM

A report sent to us records Simmental cross Steers making \$595 and topping the Dannevirke cattle fair for two year olds. The next best price was \$568 for traditional steers. The vendor was Ian Henderson of Mangatuna.

## BIG STEERS TOP ADDINGTON

In September Simmental cross steers topped Addington (Christchurch) in two consecutive weeks. The first, offered by the Colin Paterson's family, of Lakeside made a neat \$1,000 — the highest price since January. The following week D.G. Edgar of Mid-Canterbury did it again with a steer making \$1,290, a price not reached since early 1985.

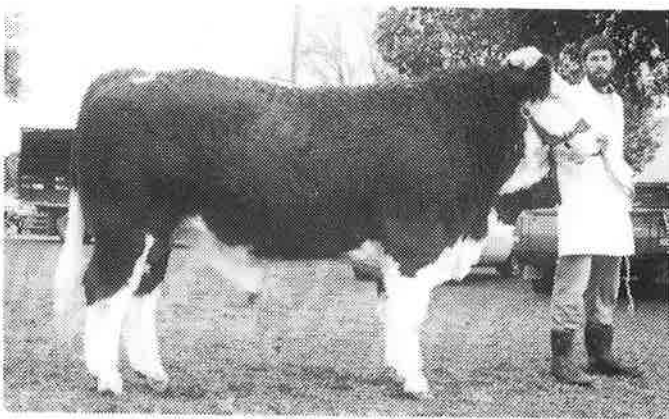
## CALF SALES

Again this season our success in calf sales has been spectacular. Despite a considerable cut-back in prices compared to 1985 Simmental cross have held their relativity over other breeds with premiums frequently up to \$60 above the next highest price. Those of you who receive 'Straight Furrow' will have seen our advertisement highlighting our calf prices. We take this opportunity of thanking those breeders who furnished summaries of Sales in specific areas. It is a long job sitting out a total sale recording every pen and price. We hope their backsides have recovered!

FOR TRUE HILL COUNTRY BRED CATTLE

## BROCADE SIMMENTALS

(HERD No. 228)



COUNTRY LIFE PHOTO (G. MAY)

### 'BROCADE RUFUS' (Illustrated)

Winner of the Pacific Freezing Silver Challenge Cup for the Best Export type animal at the 1986 North Island sale.

'Rufus' was also second highest priced bull at the sale realising \$9,000. He was purchased by H.J. Smyth of Atrig Station, Dannevirke.

ENQUIRIES AND INSPECTION WELCOME. PHONE APITI 845  
HUGH & JANE McINTYRE, APITI, 1.R.D. FIELDING.





# Avon Park Stud



## FROM CANADA

BAR 5 DIGNIFIED PRODUCED A BEAUTIFUL HEIFER FOR US. AVON PARK TIGER LIL WAS JUDGED CHAMPION SIMMENTAL HEIFER AND CHAMPION ALL BREEDS HEIFER AT CHRISTCHURCH 1986

AVON PARK HAS HAD A GOOD YEAR THIS



## FROM ENGLAND

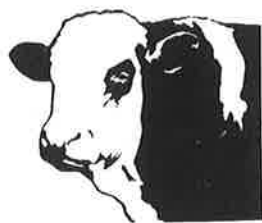
OUR IMPORTED EMBRYOS FROM THE STERLING HERD IN ENGLAND ARE NOW LIVE CALVES — THE HEIFERS ARE EXCEPTIONAL AND THEIR IMPACT IN OUR HERD WILL BE EXCITING.

AT AVON PARK WE HAVE SOME EXCITING YOUNG CAT  
BLOODLINES. VISITORS ARE MOST WELCOME AND V

DAVID & MEI

MANOR FARM, No. 1 RD LYTTTELTON.

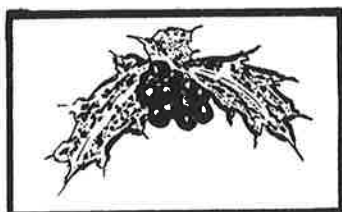
# Simmentals



## NEW ZEALAND

AS WELL AS WINNING THE HEIFER CHAMP-  
IONSHIPS AT THE CHRISTCHURCH SHOW  
OUR JUNIOR YEARLING BULL AVON PARK  
TOM SELLECK (BY HOCKENHULL MAGNUM)  
WON THE JUNIOR YEARLING CLASS.

PROSPECTS FOR 1987 LOOK EVEN BETTER



## IN THE NEW YEAR

IN THE FESTIVE SEASON WE TAKE THIS  
OPPORTUNITY OF THANKING OUR CLIENTS  
FOR THEIR SUPPORT DURING THE YEAR AND  
WISHING THEM, AND ALL SIMMENTAL  
BREEDERS, A HAPPY, SUCCESSFUL AND  
PROSPEROUS NEW YEAR.

LE FROM A CROSS SECTION OF WORLD RENOWNED  
E WILL BE DELIGHTED TO SHOW YOU OUR HERD.

**INDA CARTER,**

CHRISTCHURCH      PHONE: (03) 299 731

# Shows

## CANTERBURY SHOW NOVEMBER 12, 13, 14

A good line up of cattle gave strength to the breed at Christchurch. Top exhibitor for the Show was O.J. Osborne of Doyleston who has been a regular exhibitor at every show since we started in 1977. His cattle took both Senior Championships in the Supreme and he personally had the bonus of being awarded the Canterbury Club's Herdsmans Trophy. This year's judge was Mr Michael Coombs of Ailsa Farm, Kimbolton. Class results were as follows:

### **COW & CALF, OVER 3 YEARS (2)**

1st Winfield Kandy (Winfield Goliath — Irish Florence) O.J. Osborne, Doyleston.  
2nd Risingholme Laura, (Siegfried — Richmond Jane) Crosson Bros., Timaru.

### **HEIFER, 2 YEARS (5)**

1st MacMathan Red Rossett, (Risingholme Brigadoon — Avon Park AM17) D. & J. Matheson, Christchurch.  
2nd Winfield Ruth, (Thierauch — Winfield Kiss Me Kate) O.J. Osborne, Doyleston.  
3rd Ladburn Tamara, (Bismark — Ladburn Niftee) A.A.T. & L.A. Partridge, Ladbrooms.

### **HEIFER, SENIOR YEARLING (3)**

1st Springbrook Irish Maid, (Ignaz — Springbrook Marion) C.J. Patterson, Lakeside.  
2nd Springbrook Irish Colleen, (Ignaz — Springbrook BN30) C.J. Patterson, Lakeside.

### **HEIFER, JUNIOR YEARLING (9)**

1st Avon Park Tiger Lill, (Bar 5 Dignified — Avon Park Kiss) D.C. & M. Carter, Lyttelton.  
2nd Avon Park Tootsie (Avon Park Majestic — Harlau Honour) D.C. & M. Carter, Lyttelton.  
3rd Ladburn Tipperary, (Pendeen Nevada — Rutherford BJ76) A.A.T. & L.A. Partridge, Ladbrooms.

### **TWO YEARLING HEIFERS (3 Pairs)**

1st D.C. & M. Carter.  
2nd C.S. Patterson

### **BULL, OVER 3 YEARS (1)**

1st Avon Park Muck (Sir Avon Park Extra — Skerrington Sarah) A.A.T. & L.A. Partridge, Ladbrooms.

### **BULL, 2 YEARS (2)**

1st Winfield Rex, (Avon Park Magpie — Winfield BK911) O.J. Osborne, Doyleston.  
2nd The Lakes Tony, (WBL Transmitter — Peak Hill Linn BL13) Daly/Groters, Cheviot.

### **BULL, SENIOR YEARLING (1)**

Makerikeri Titan, (Rotomara Nicodemus — Russley Neva) I.G. & P.J. Wright, Loburn.

### **BULL, JUNIOR YEARLING (5)**

1st Avon Park Tom Selleck, (Hockenhull Magnum — Avon Park AM37) D.C. & M. Carter, Lyttelton.  
2nd Springbrook Trogan, (BBA Galant — Springbrook AN26) C.S. Patterson, Lakeside.  
3rd Makerikeri Thomas, (LJB Jade — Rissington AN 197) I.G. & P.J. Wright, Loburn.

### **ALL BREEDS BEEF CLASSES**

Meat & Wool Cup — Charolais — B.T. Fisher.  
Yearling Bull — Angus.  
Yearling Heifer — Simmental — D.C. & M. Carter.

### **CHAMPIONSHIPS/TROPHIES**

Supreme Champion, Winfield Kandy.  
Senior Female Champion, O.J. Osborne, Doyleston.  
Pendeen Challenge Trophy.

Senior Female Reserve Champion — Risingholme Laura, Crosson Bros., Timaru.

Junior Champion Female — Avon Park Tiger Lill.  
Swiss Bell Challenge Trophy — D.C. & M. Carter, Lyttelton.

Senior Champion Bull — Winfield Rex.  
Harlau Silver Challenge Jug — O.J. Osborne, Doyleston.

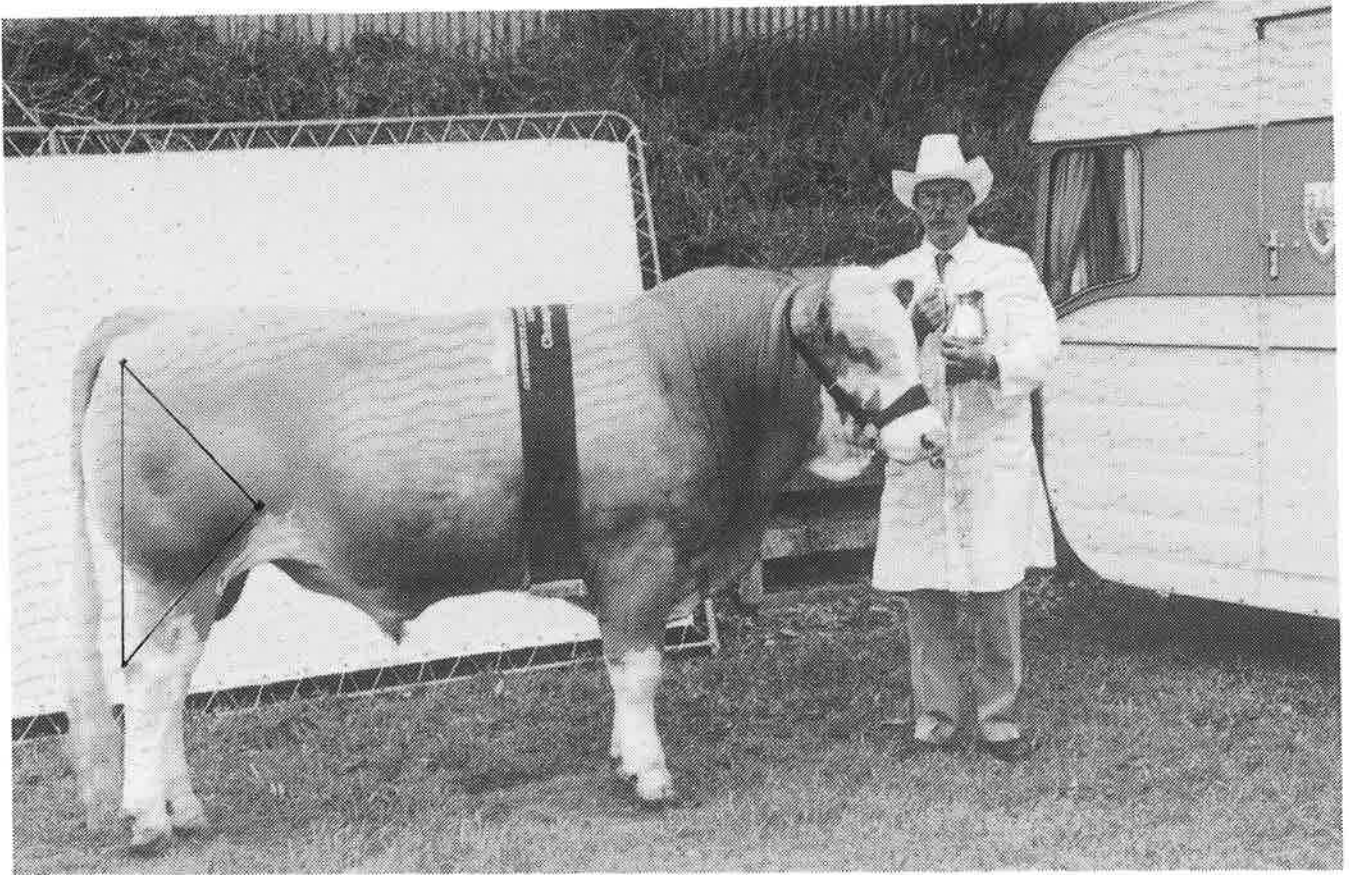
Junior Champion Bull — Makerikeri Titan  
MSD/AGVET Challenge Trophy — I.G. & P.J. Wright, Loburn.

Canterbury Club Herdsmans Trophy — O.J. Osborne, Doyleston.

## BALCLUTHA SHOW.

Three breeders exhibited cattle at Balclutha with success. K.R. Hinton took the Supreme Simmental award with his Champion Yearling Heifer which also won the Meat and Wool Cup. 'KGM' AT1 (Sire: Blythe Hamish — Dam: Rutherford 142/BK4). The same exhibitor also won the yearling pairs class and the Sire/progeny class in all breeds. In the Senior bull classes G. Bain of Outram took first with G. Paisley of Balclutha second.

# Shows



*Double win for Oakleigh Osborne of Leeston who took both the Senior Bull and Female Championships as well as the Supreme Simmental award. This is the first time one exhibitor has taken both Championships at Christchurch.*





# **Shows**

## **SOUTHLAND SHOW (Invercargill)**

### **SOUTHLAND SHOW (Invercargill)**

Four consistent exhibitors represented the breed at the recent Southland Show with a good line of entries. The Judge this year was Mr David Carter of Lyttelton.

Class results were as follows:—

#### **BULL, OVER 1 YEAR (2)**

1st K.G.M. Robin (Dunmore Hansa-KGM AM59) K.R Hinton & Sons, Alexandra.

2nd Sunnyvale Realm (Levels Lancelot — Southern Melanie) R.W. Lott & Son, Garston.

#### **BULL, YEARLING (4)**

1st Robot Trader (Robot Nerin — WSSB Gina) J.A. & M.J. Robins, Invercargill.

2nd Sunnyvale Trojan (Levels Lancelot — Southern Kathleen) R.W. Lott & Son.

3rd K.G.M. Travis (Blythe Hamish — KGM BK21) K.R. Hinton & Sons.

#### **COW, OVER 3 YEARS WITH CALF (1)**

1st Centre Burn Petunia, (Panther — Centre Burn Kiri) A.W. & P.A. Duncan, Mossburn.

#### **HEIFER, 2 YEARS (1)**

1st Sunnyvale Rata, (FCF Sonny Boy — Sunnyvale Nicole) R.W. Lott & Son.

#### **HEIFER YEARLING (7)**

1st Robot Trendy, Levels Nolan — Troy Hill BK 21) J.A. & M.J. Robins

2nd K.G.M. Trixie (Blythe Hamish — KGM BK4) K.R. Hinton & Sons.

3rd Robot Trixie (Robot Nero — Robot Miss Jade) J.A. & M.J. Robins.

4th Centre Burn Tania (Willow Burn AL6E — Murinui BH4) A.W. & P.A. Duncan.

#### **PAIR YEARLING HEIFERS (3 Pairs)**

1st J.A. & M.J. Robins.

2nd A.W. & P.A. Duncan.

3rd K.R. Hinton & Sons.

#### **GROUP, BULL AND TWO FEMALES (2)**

1st J.A. & M.J. Robins

2nd K.R. Hinton & Sons.

#### **CHAMPIONSHIPS**

Champion Bull and Wairaki Station Trophy — Robot Trader, J.A. & M.J. Robins.

Reserve Champion Bull — K.G.M. Robin, K.R. Hinton & Sons.

Supreme Champion Simmental

Champion Female and

East Dome Trophy and

Southern Districts Sash — Centre Burn Petunia, A.W. & P.A. Duncan.

Reserve Champion Female — Robot Trendy, J.A. & M.J. Robins.

#### **INTERBRED CLASSES**

##### **BULL OVER 2 YEARS**

3rd Sunnyvale Realm, R.W. Lott & Son.

##### **COW OVER 2 YEARS**

2nd Centre Burn Petunia, A.W. & P.A. Duncan.

##### **HEIFER 2 YEARS**

1st Sunnyvale Rata, R.W. Lott & Son.

##### **HEIFER YEARLING**

1st Robot Trendy ) equal points, J.A. & M.J. Robins.

2nd Robot Trixie )

##### **BULL YEARLING**

1st Robot Trader, J.A. & M.J. Robins.

##### **MEAT & WOOL CUP (Senior)**

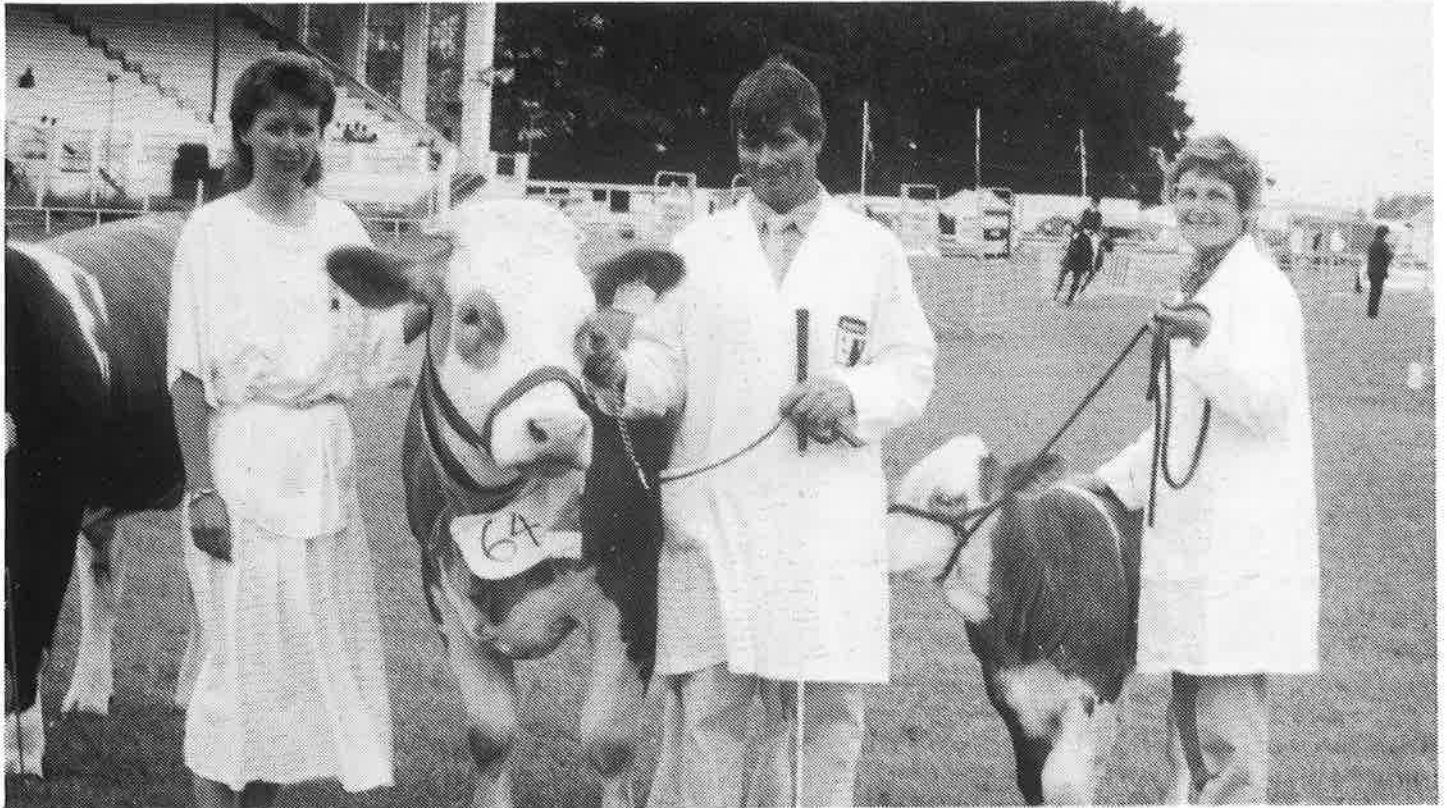
1st Hereford

2nd Simmental (Centre Burn Petunia), A.W. & P.A. Duncan.

##### **MEAT & WOOL CUP (Junior)**

Hereford.

# Shows



*Allister and Pam Duncan of Mossburn with cow and calf that won the female Championship and the Supreme award at Invercargill. With them is Mrs. Melinda Carter the judge's wife.*

## WAIRARAPA SHOW (MASTERTON)

Simmentals appeared in the ring for the first time at the Wairarapa Show this year. Three breeders exhibited, John Clapham of Masterton, Peter Maxwell of Dannevirke and Peter McWilliam of Masterton.

### CHAMPION BULL AND SUPREME SIMMENTAL

Kindar Galaxy, (Ohu AL12, (Bavarian SV) — Rangitikei BH3), Wai-iti Stud Masterton.

### CHAMPION FEMALE

Winslow Rosaana (Tokaweka Kaiser — Sherwood BK6) Peter Maxwell Dannevirke.

Kindar Galaxy, a two year old was narrowly defeated in the Meat & Wool Cup by the Hereford. Judges' points were all equal and a 'referee' had to be brought in who chose the Hereford. This bull was sold to Australia the following week for \$100,000.00!

## Coopental Simmental Stud

★ A COMPLETE DISPERSAL OF THIS STUD WILL TAKE PLACE ON FRIDAY 3rd. APRIL 1987. ★

★ 150 ANIMALS WILL BE OFFERED INCLUDING RECENT SHOW WINNERS. ★

THIS STUD IS THE RESULT OF 12 YEARS OF RUTHLESS CULLING AND SELECTION.

### VISITORS AND ENQUIRIES WELCOME

Contact Neil & Derrien Barnett Phone 820 Pukeatua  
AROHENA R.D.7 TE AWAMUTU

# Shows

## WAIKATO SHOW 1 & 2 NOVEMBER

Simmental exhibitors made an impact at the Waikato Show this year taking the Meat & Wool Cup as well as several other interbreed awards. This year's Judge was Mr Gary Locke of Hamilton.

### SENIOR FEMALE (1)

1st Coopental AR39, (L & S Lopez — Coopental Lavinia) N.J. & D.A. Barnett, Arohena.

### JUNIOR HEIFER (5)

1st Karewa Duchess, (Heywood Esquire — Hauraki BL3) L. & J. McNaughten.

2nd Consi Tara, (SBL Mar-Zou — Consi Kismet) Mrs J. Arbon.

3rd Karewa Jewel, (Heywood Esquire — Hauraki BJ1) L & J. McNaughten.

### SENIOR BULL (1)

1st Lochamday BN Pace, (Bavarian SV — Alston Favourite) N.J. & D.A. Barnett, Arohena.

### JUNIOR BULL (4)

1st Coopental Terrific, (L. & S. Lopez — Blythe Gretel) N.J. & D.A. Barnett.

2nd Consi Tumai, (Heywood Esquire — Consi Odette) Mrs J. Arbon.

3rd Ohu Terrific, (Rotomara Nelson — Ohu AK6) G.G. Pearce, Putaruru.

### BULL/HEIFER PAIR YEARLINGS (2 Groups)

1st Mrs J. Arbon

2nd G.G. Pearce.

### BULL AND TWO FEMALES (2 Groups)

1st Mrs J. Arbon.

2nd N.J. & D.A. Barnett.

### SIMMENTAL PERFORMANCE CLASS (4)

1st Ohu Terrific G.G. Pearce.

2nd Coopental Terrific. N.J. & D.A. Barnett.

### CHAMPIONSHIPS

Supreme Simmental, Champion Senior Bull, Champion Male of Breed. 'Lochamday BN Pace'.

Junior Champion Bull, Reserve Champion Male of Breed. 'Coopental Terrific'.

Senior Champion Female. 'Coopental AR 39 — Exhibited by N.J. & D.A. Barnett.

Junior Champion Heifer, Champion Female of Breed. 'Karewa Duchess', — Exhibited by J. & L. McNaughton.

Reserve Junior Champion Heifer, Reserve Champion Female of Breed. 'Consi Tara'.

Reserve Junior Champion Male, 'Consi Tumai' — Exhibited by Mrs J. Arbon.

### ALL BREED BEEF CLASSES (12)

#### BEST YEARLING HEIFER

1st Red Poll.

2nd Consi Tara, Mrs J. Arbon.

3rd Consi Terri, Mr J. Arbon.

#### BEST YEARLING BULL (12)

1st Coopental Terrific, N.J. & D.A. Barnett

2nd and 3rd Hereford.

4th Angus.

#### YEARLING BULL & HEIFER (4 Pairs)

1st Simmental, Mrs J. Arbon

2nd and 3rd Hereford.

4th Simmental, G.G. Pearce.

#### TWO YEAR HEIFER (2)

1st Simmental, N.J. & D.A. Barnett.

2nd Angus.

#### BULL & TWO FEMALES (6 Groups)

1st Angus.

2nd Hereford.

3rd Simmental, Mrs J. Arbon.

#### MEAT & WOOL CUP

N.J. & D.A. Barnett 'Lochamday BN Pace'

#### FOUNDERS CUP (Breed Team of 4)

Angus Team.

# Shows

## HAWKES BAY SHOW (HASTINGS)

(Judge: Mr Kevin Ryan. Wrightson/Dalgety. Hastings)

### CHAMPION SENIOR BULL AND SUPREME SIMMENTAL.

Dunshauglin Ruffian (Blythe Muldoon — Tipapa Fiona) T.J. Murphy, Waipukurau.

### CHAMPION SENIOR FEMALE

Glen Anthony Prestige (Glen Anthony Lustre — Glen Anthony Excel) A.H. & G.M. Thompson, Waipukurau.

### INTERBREED COMPETITIONS

Yearling Bull — 1st Simmental, T.J. Murphy.

Beef Export Cow — 1st and 3rd Simmental, A.H. & G.M. Thompson.

Production Cow — 2nd Simmental A.H. & G.M. Thompson; 3rd Simmental J.P. Absolom.

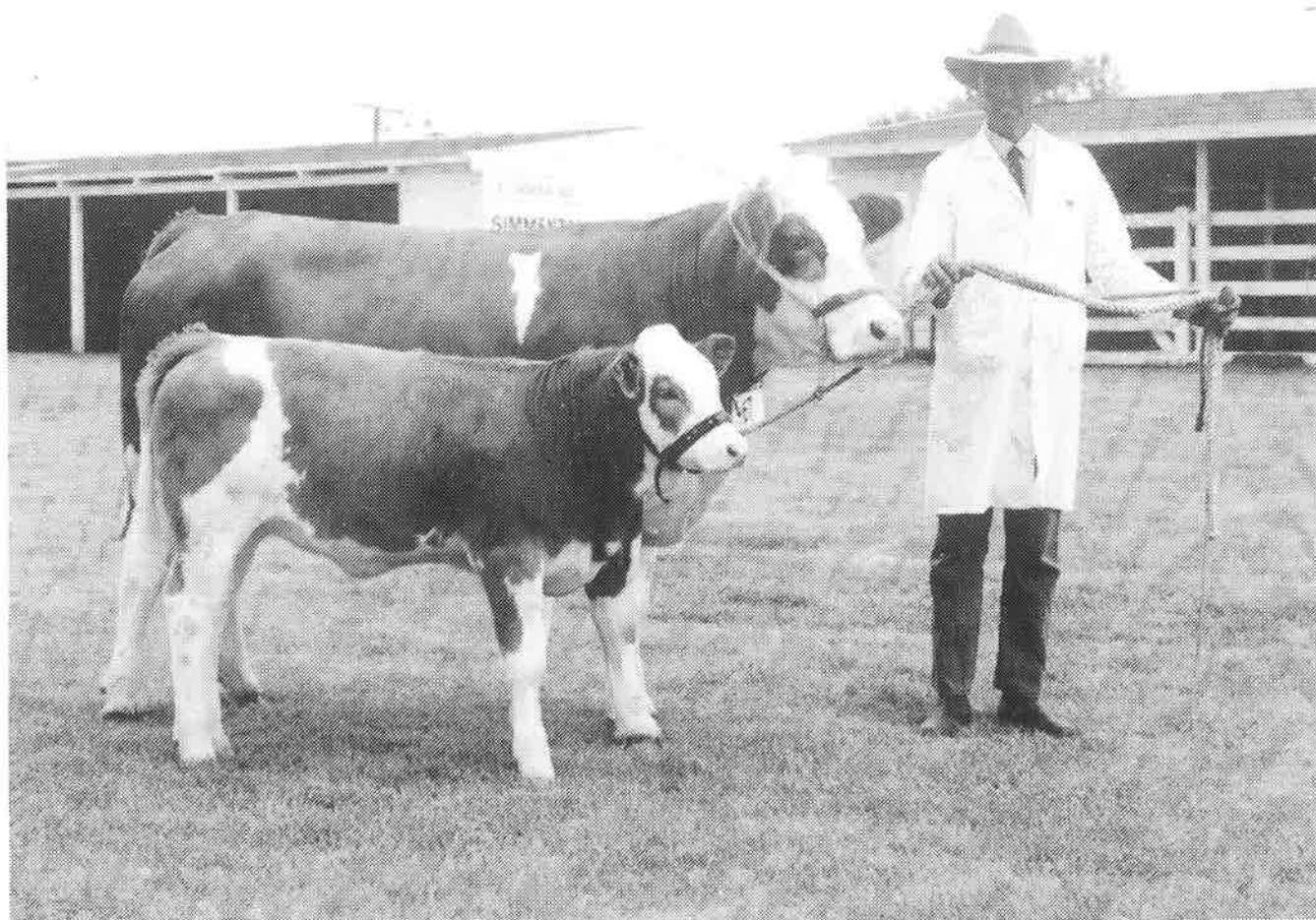
Meat and Wool Cup — 1st Simmental T.J. Murphy; 2nd Simmental A.H. & G.M. Thompson.

### QANTAS PRIZE

Trip to 1987 Sydney Royal Show for two. Exhibitor who has shown over the years regularly with impressive results. A.H. & G.M. Thompson, Glen Anthony Stud, Waipukurau.

### NOTE:

It is of great achievement for the Simmental breed that it is the first breed to have ever won the Meat and Wool Cup in five consecutive years at Hawkes Bay.



COUNTRY LIFE PHOTO (G. MAY)

*Tony Thompson of the Glenanthony Stud, Waipukurau, who has had a great Show season. Glenanthony have won both Senior male and female Championships at Gisborne and then went on to win the Meat Wool Cup. They also took the Senior female Championship and Reserve at the Royal. At Hawkes Bay they again won the Senior female Championship, were placed 1st. & 3rd. in the All Breeds Beef Export Cow class, 2nd. in the Cow Production class and took 2nd. in the Meat & Wool Cup. As a 'bonus' Tony was awarded the Qantas prize of a trip for two to the Royal Show in Sydney (1987) for being the most consistent exhibitor at the Show. It is fitting that Tony and Glenis were awarded the prestigious Levels Promotion Trophy for 1986. This goes to the member(s) who in the opinion of the Council have made exceptional contributions in promotion of the Breed.*



# Shows

## GORE SHOW

Four exhibitors contested at Gore with results as Follows:—

**CHAMPION BULL** — G. Paisley, Balclutha.

**RESERVE CHAMPION BULL** — R.W. Lott & Son, Garston.

### JUNIOR BULL

1st J.A. & M.J. Robins, Invercargill

2nd R.W. Lott & Son

3rd K.R. Hinton & Sons.

### JUNIOR HEIFER

1st and Champion — J.A. & M.J. Robins.

2nd and Reserve — K.R. Hinton & Sons.

3rd — J.A. & M.J. Robins.

**SENIOR HEIFER.** — J.A. & M.J. Robins

**CHAMPION COW** — R.W. Lott & Son.

### PAIR HEIFERS

1st — J.A. & M.J. Robins.

2nd — K.R. Hinton & Sons

### JUNIOR BREEDERS GROUP

1st — J.A. & M.J. Robins.

2nd — K.R. Hinton & Sons

**JUNIOR MEAT & WOOL CUP** — J.A. & M.J. Robins

### SENIOR MEAT & WOOL CUP

1st — Hereford

2nd — Simmental G. Paisley

**SUPREME SIMMENTAL** — J.A. & M.J. Robins

## ALLFLEX ABSORB 'FARM-ACY N.Z. LTD'

Allflex, the internationally known plastic tag manufacturers for livestock have recently taken Farm-Acy, the old established Palmerston North manufacturer into their organisation. Farm-Acy, has for over 60 years produced equipment for earmarking sheep and cattle, brass and aluminium tags, tattoo equipment and various other products.

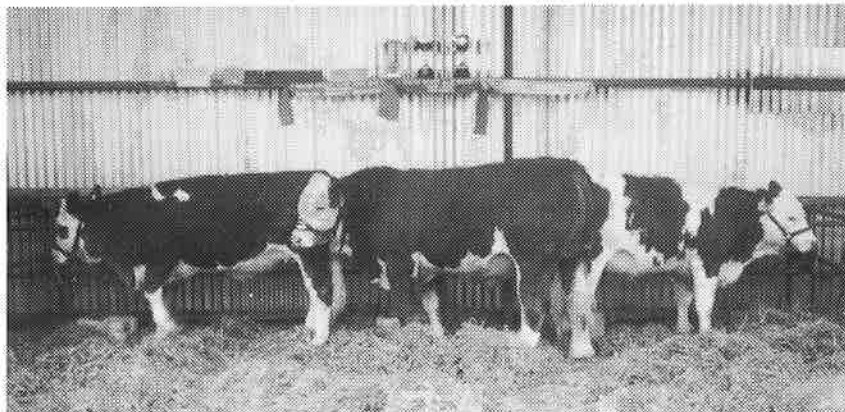
Allflex will now have a total animal identification system and with their wide marketing and production experience provide a comprehensive service to all livestock breeders. Allflex manufacture and provide our Simbeef Tags and will now be able to supply the nickel plated brass tags which we recommend as a cross reference for our tattooing system. Farm-Acy will continue under its own name and orders may be placed on a 'cash on delivery' basis or by charging to your preferred reseller. We will accept debit for brass tags or tattooing equipment as we do with Simbeef Tags.

Allflex/Farm-Acy's address is:  
PRIVATE BAG, PALMERSTON NORTH or phone  
Mrs Shirley Foster, 80-297.

### SIRE INFORMATION — A1 SIRES

A publication that gives some very good performance information on top A1 Sires is the American Simmental Sire Summary. A number of Sires that are on the New Zealand A1 list are recorded.

Copies of this publication may be obtained from the American Association (cost plus postage). Address: Simmental Way, Bozeman, Montana, 59715, U.S.A. This Summary is published annually.



**K.R. HINTON I.R.D. ALEXANDRA - PHONE 7509**  
**ENQUIRIES & INSPECTION WELCOME**

# SIMMENTALS EVERYWHERE

# A Contributed Article

A contributed article by Werner Gut of Taranaki who is one of the few farmers in New Zealand who has specialised in milking Simmentals since the breed's introduction. Mr Gut who has lived in New Zealand for over thirty years is Swiss.

At the end of April my wife and I went off on another big trip with the usual destination, Switzerland, to see my mother.

After Sydney and Hong Kong we toured China with a small group of ten people for seventeen days. I am always on the lookout for cattle, which in China are mostly water buffalos in the warmer areas, or else Brahman cattle representing different local breeds. I did not see any Simmentals in China but they do have some, probably in areas that we did not visit. They have a postage stamp with the picture of a Simmental bull on it.

In Shanghai we saw a Friesian herd which was managed by twenty-three people. The sixty Friesian cows looked very much like ours in New Zealand, they could have even been progeny from the Dairy Board semen. There were no pastures like we know them. The cows were fed mainly from the residue of very big vegetable growing areas. They were milked three times daily.

The tour ended in Peking. Early next morning Norma and I had to catch a train to Siberia, which only goes once a week. We got dropped off at the railway station with twenty minutes to spare. The desperate search for our train we will never forget. We could not find any train at all for the first ten minutes. There were thousands of Chinese and not one European in sight whom we could have hopefully followed. It was the biggest obstacle course I have ever done with two suitcases in my hands. We made it with one minute to spare, dripping with sweat and started on the most unforgettable train trip ever.

Into Mongolia we started to see big herds of cattle and horses, looked after by small Mongolian people, always on horseback. There was quite a lot of Simmental type cattle and many of the horses looked very good types. I have a very valued slide taken from the train of two Simmentals sitting in the Gobi desert, miles from anywhere.

Border crossings were very time consuming from China to Mongolia and Mongolia to the Soviet Union. Armed solidiers marched up and down on both sides of the train, and some walked on top of the carriages. The compartments in the train were searched but not our luggage. The officials were very polite.

Coming out of the Gobi desert we started to see more and more trees and the odd village. In Siberia the houses were very small, they all had big backyards with little sheds and wooden fences where they had goats and cattle of all ages. The cattle were nearly all Simmentals. We stayed in Irkutsk in Siberia for four days, just wandering around. We had a few hassles with officials in the hotel. The Russians like people in organised groups. As individuals we had a fair bit of trouble getting something to eat, or booking on a tour. Usually we ended up with a guide, a driver and a limousine, just for the two of us. Before our trip I learned a bit of Russian language, which came in handy. We met quite a few very nice Russian people.

Back on the train to Moscow we saw more herds of cattle, Friesian and Simmentals and crosses of the two breeds. We spent six days and nights on the train between Peking and Moscow. The Trans-Siberian trains are quite comfortable, of course you cannot have a decent wash but in the end everybody is a bit smelly so it does not matter much. We spent four days in Moscow where I tried to organise a visit to a farm unsuccessfully.

Travelling in the Soviet Union and staying in non-tourist hotels is often not very comfortable, but very interesting. Nobody seemed to worry about us much, I do not think we were ever followed on our wanderings. One is probably a lot safer in Moscow than in most western cities. However, we did not convert to communism.

Everytime we are in Switzerland we make a trip to Austria to try to get more semen from top Simmental bulls. In Austria cattle are not inoculated against foot and mouth disease — that is why we are allowed to import semen but exports are restricted to Styria which is away from the border. Mr Winfred Windsnig is Secretary Manager of the Flechvieh Breeders Corporation of Styria and has two field officers — an office staff of four to six people. All their animals are inspected before they are registered and several times during their lifetime. All records are computerised. The very best bulls are held in the A.I. Centre at Gleisdorf. To my mind we cannot get semen of greater reliability anywhere. Semen is available at the same price as the Austrian farmers pay but our dollar is not good compared to the European currencies which makes it fairly expensive.

With the help of Mr Southcombe of the New Zealand Dairy Board we are trying to arrange an exchange deal for Simmental semen with New Zealand Friesian semen — I have discussed this possibility with people in Vienna. It now depends on whether the Friesian breeders in Austria want to try New Zealand Friesian semen. If it comes off we should be able to buy semen at a reasonable price from the New Zealand Dairy Board from top Austrian bulls which are progeny tested for beef and butterfat production and selected for their conformation and ease of calving.



*It could be in the European Alps. It is in fact in the Rakaia Gorge across the river from the Mount Hutt ski field. Who said Simmentals won't climb hills!*

# Club News

## CANTERBURY CLUB HOLD 10TH ANNIVERSARY CLUB DINNER

On the 17th July members and families of the Canterbury Simmental Club marked the occasion of their ten years of existence with an excellent dinner held at the Hornby Licencing Trust Hotel in Christchurch. Some sixty people attended including some of the foundation members of the Society and the Club itself. Ted Turrell, one of the original Club members spoke on the Club's formation and progress through the years. Activities were held infrequently but were always very well supported and the Club's main effort each year was the establishment of a 'breed centre' at the Canterbury Show. The Club also gave strong support at the South Island Sale each year in marshalling and organisation and the occasional field day.



*l-r. David Cassells, guest speaker, Mrs. Jan Turrell and Ron Guthrey.*

Guest speaker at the evening was David Cassells, Stud Stock Manager of Pyne Gould Guinness who gave an interesting and amusing address on his experiences in marketing livestock overseas. He has personally been responsible for stud stock markets particularly Corriedale sheep in such places as South America and Europe and has had no small hand in the establishment of the Mohair industry in New Zealand. Recently he has been involved in the introduction of Alpacas (or were they Llamas?) to New Zealand.

At the conclusion of the dinner Mrs R. Hiatt, wife of one of the original Society members, now retired and living in Christchurch, cut the tenth anniversary cake, ably helped by new Club President, Peter Sibley.

The evening was a most happy occasion and an illustration of the strength of the Club and the breed in the Canterbury area.



*Mr. and Mrs. R.H. Hiatt original members of the Society who graced us with their presence.*



## SIMMENTALS

Bred and raised on the hills for the hills . . .

One of New Zealand's leading polled sires 'SILVERMOYLE NEHEMIAH' which we have recently purchased is now standing as senior stud sire other polled sires in service are 'COOPENTAL ROBUST' 'SILVERMOYLE REGAN'

Our aim is to carefully select and breed sound easy calving, easy care, polled Simmentals with frame and growth providing cuts of quality lean meat.

ALL ENQUIRIES WELCOME

P. & D. CHAMBERLIN  
PONUI ISLAND (Hauraki Gulf)  
PRIVATE BAG, AUCKLAND.  
PHONE (09)534-9060

## EAST COAST VISIT

Following the North Island Sales in June the Secretary spent a week in the Hawkes Bay and Wairarapa areas visiting some of the breeders in those areas.

Always a rewarding experience to go over peoples properties, this trip was no exception. Hawkes Bay has always been a 'strength area' but the expansion of Simmentals over the last few years has been spectacular with some excellent herds established and new names emerging. Their influence shows up as you travel through the area and frequently Simmental bulls are seen from the road on traditional beef properties. The breed is spreading and in the Wairarapa several herds have developed and bulls have gone out into the commercial herds in many areas where only a year or two ago there were none. Obviously good marketing and Simmental success in weaner Sales has proved the point. A few of the photographs taken illustrate what is going on in the area. Unfortunately not as many photographs were taken as I would have liked, days were short and the weather not always kind. Two herds not photographed, both had excellent cattle. Rochdale Station run by Jeremy Dearden is a very large property, in excess of 2,000 acres, out behind Waipukurau has an up and coming Simmental herd of very high standard. These cattle are grass wintered on hill country and young stock show the result of dilligent culling and selection. Rochdale started a herd in the early days then faded out, but has been re-vitalised under Jeremy's keen and industrious management.

Another herd more recently established in the Waipukurau area is that of Tim Murphy. Unfortunately seen in the lights of a Toyota, in the rain, the number and quality was still impressive. Most of Tim's cattle have been bought in but he has bought quality and sound genetic material. Some of the cattle were familiar, having come from the late R.G. Macdonald's herd in Canterbury — one of the co-founders of the Society. Again young stock showed strength and style.

In a visit of this type time is a most difficult factor and the lack of it unfortunately prevented intended calls to a number of other breeders further north.

The overall impression of my visit was one of an area that is really getting underway with the breed with some excellent cattle being produced by enthusiastic and progressive breeders.



*A strong line of purebred yearling bulls on a property at Norsewood near Dannevirke run by Peter Maxwell in conjunction with Tony Thompson. They are part of an impressive group of young cattle on this property.*



*Graded cattle are still being bred on a number of properties in numbers. On Anthony Plummer's Te Kouka Station (2000 acres) near Dannevirke the two year old heifers and the weaner heifers pictured show great potential. Te Kouka are grading up from an excellent base of Shorthorn cows and all progeny are being performance recorded. Culling is vigorous and cows are calved on the hill and all stock grass wintered. Te Kouka promises to be one of the up and coming herds in the area.*



*The very impressive assembly of commercial Simmentals on Dennis Brownrigg's property near the main road south of Hastings. This herd has cattle of all grades through to purebred and numbers some 400 breeding cows. Weaners from this enterprise frequently top the local markets.*



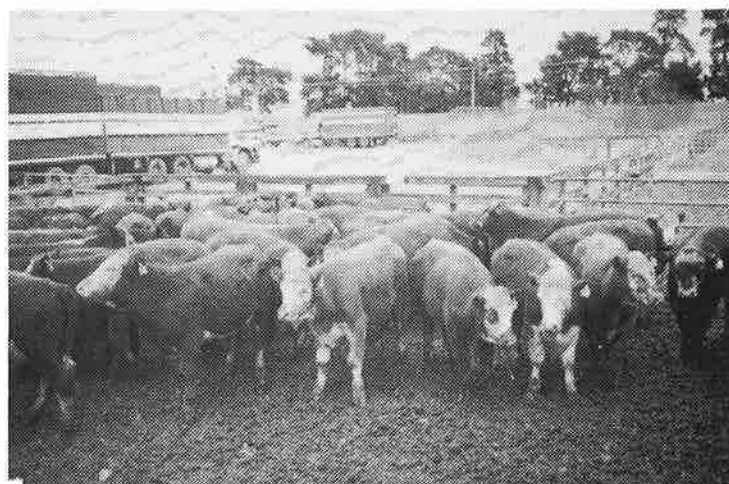
# Miscellaneous

## FARMERS STUD STOCK CLOSES

The above Company, based in Palmerston North who have co-ordinated the stud livestock situation for branches of the various Farmers Co-ops and associated independent Companies throughout New Zealand closed their doors on the 29th of August.

Changes that have occurred in the Stock & Station industry in recent years coupled with the current economic scene have made their continuance non-viable. The Member Companies who were under the umbrella of Farmers Stud Stock will continue to provide stud stock services in their provincial areas. These are Williams & Kettle Ltd., (Hawkes Bay and Gisborne), Taranaki Farmers (Taranaki), Pyne Gould Guinness Ltd., (Canterbury/Marlborough), Reid Farmers (Otago), Southland Farmers (Southland) and Elders Pastoral who are represented New Zealand wide. The now amalgamated conglomerate of Wrightson/Dalgetys will of course continue to be represented throughout New Zealand.

In looking back over the years you wonder where they have all gone to. Wright Stevensons, National Mortgage, Dalgetys, N.Z. Loan Company, Farmers Co-ops — more to the point, you wonder how they all fitted in and made a living!



A top line of Simmental weaner steers at Masterton major weaner sale. These calves from the Wai-iti Trust at Eketahuna made \$450. (equal top price)

## YEAR LETTERS TATTOOING —

1985 — T      1987 — W  
1986 — U      1988 — X

# WAI-ITI      ROTOMARA

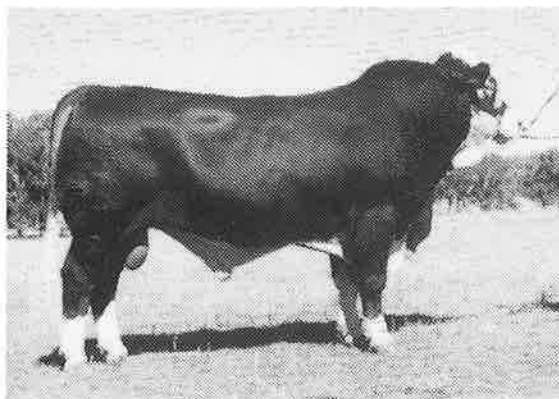
## Simmental Sire Power

### NORLANDS LOT (EXTRA X SC.HEROD)

LEADING N.Z. SIRE WHO'S  
SONS HAVE SOLD TO  
\$14,000 AND SIRE OR 1986  
N.Z. SALES TOP PRICE BULL  
\$10,500

### KINDAR GALAXY (BAVARIAN X PELIKAN)

A 'MODERN' TYPE OF  
SIMMENTAL SELECTED FOR  
HIS GREAT HEIGHT AND  
SMOOTHNESS.



### RISSINGTON NATIONAL (LJB JADE X SIEGFRIED)

SIRE OF EQUAL TOP PRICED  
PEN AT MASTERTONS MAIN  
ANNUAL YEARLING FAIR(\$450)

### ROTOMARA NICADEMUS (MMB HERMAN X SC.HEROD)

NOTED FOR THE MILKING  
ABILITY OF HIS FEMALES.  
HE IS AN EXTREMELY LONG  
SOFT EASY FLESHING  
BULL.

### DUNMORE COSSACK II

(DUNMORE LESTER X ULAN)

GRAND CHAMPION AT SYDNEY ROYAL SHOW 1986. ¾ SHARE SOLD FOR \$20,000  
SELECTED FOR HIS STRUCTURAL CORRECTNESS AND HIS OVERALL SCALE

WE ARE EMBARKING ON AN EXTENSIVE GRADING-UP AND EMBRYO TRANSFER  
PROGRAMME USING THE ABOVE SIRES. OUR AIM IS TO PRODUCE **TOP QUALITY**  
CATTLE FOR THE **WAIRARAPA. NEW ZEALAND AND OVERSEAS.**

**ENQUIRIES TO: PETER McWILLIAM, 139 UPPER PLAIN ROAD, MASTERTON**

**PHONE (059) 87575**

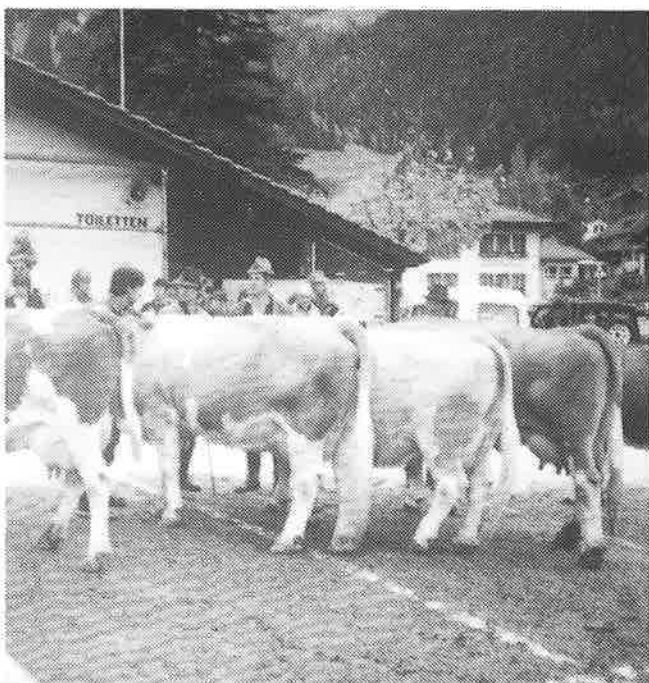
## AN ASSESSMENT

On our recent and brief visit overseas I somehow managed to get involved in the Simmental scene — it becomes a way of life. We spent some time in Switzerland where we were treated to great hospitality by the Swiss. The World Federation, The Swiss Simmental Association and the Federation of Swiss Cattle Breeders' did their utmost to make us welcome.



*Some of the 300 plus cows in the assembly pavilion.*

I spent time in the offices of each organisation, a well worthwhile experience. Their recording systems and their whole set up is highly efficient having been built up over many years with strong government backing, and reflects the whole lifestyle of the country which is so disciplined and tidy. We were taken to an annual cattle 'Show' in the Bernese Oberland, the sub-alps in the Jungfrau region at a village named Fruitigen, an old and beautiful area just over the ridge from the Simmental Valley. The 'Show' differed from what we know in that it was basically an assessment or



*Cows in the judging ring. These were the elite of the day being judged for the top cow of the area.*

## THE SWISS COW

classification day where breeders from the surrounding area brought their cows to be inspected and recorded for height, conformation and structure, udders, legs and feet. Over 300 cows ranging from first calvers to the matriarchs of the herds were assembled in a large pavilion specifically built for cattle shows complete with scales and judging ring. Each animal was led into the ring and assessed by a group of senior judges. I was honoured by being invited into the ring to see at first hand what went on. The way they went about things was little different to our own judging. Points were awarded out of ten for the various sectors on which they were assessed and entered on the animal's record card. So that the general populace could keep up with what was going on the points were also inscribed on the rump of each cow with a marker pen.

Each animal's points were subsequently computerised into the herd owner's records. The question of feet was of interest as these animals spend months indoors in the winter and trimming is necessary and an accepted farming practice. The standard of foot structures and shape was generally very good with few exceptions and closely scrutinised by the judges.



*World Federation interpreter Teresa Thoni who took us to Fruitigen, with Gail Johnstone the Secretary's wife. In the background is the local Postman who happened to be passing by. He is talking to Emanuel Germann Director of the Swiss Simmental Association.*

The quality of stock was outstanding and although there were some of a more dairy type (mainly graded animals) there were some outstanding females on show, showing beautiful conformation and structure while still maintaining their femininity, many would have fitted into our scene with great credit. The Swiss cowbell is no myth and the whole valley resounded to the 'tinks and tonks' of the hundreds of cattle grazing in the area — disturbing the tourists sleep no end!

It was a tremendous experience to see Simmentals in such number in one of the main countries of their origin.

**simbeef**  
symbol of progress

# Miscellaneous

## REPORT FROM TARANAKI

Ray Nicholas of Normanby reports good progress in Taranaki: Taranaki is a province built mainly on dairying with the exception of our eastern hill country from Awakino through to Waitotara in the south including Waverley.

Dairy farmers have been slow to move into Simmental crossing and the beef and sheep farmers have been using a 'wait and see' attitude.

However over the last two years beef farmers have changed their thinking somewhat and with the introduction of Bulls from Mossy Creek and Pineview Studs our crossbred cattle have been topping sales.

With a big swing to dairy beef Dairy Farmers have also been strong buyers this year creating almost a complete sell out of yearling and two year old purebred bulls. A strong emphasis on joining Simbeef has been put to these farmers.

Three new studs were formed last year and all reports show pleasing results. If the demand for bulls continues as it has this year Taranaki breeders can say they have broken through that barrier.

## COMPUTER RETURNS

We remind members that we require your completed Calf Entry Sheets back in the office not later than the 28th FEBRUARY, (1987). You have the option of registering your calves on the Calf Entry Sheet or on the Calving Report which is the computer printed summary of your Calf Entry Sheet.

Help us, help you, by returning your Calf Entry Sheet as soon as it is completed.

**PLEASE USE OUR NEW  
POST OFFICE BOX . . .**



**P.O. BOX 13-142  
CHRISTCHURCH 1.**

## SUNDRY STATISTICS

(News can be many things. Breakfast reading in Singapore, an Island with absolutely no agriculture produced this interesting snippet of statistical information).

### "SWISS COWS' GIFT TO THE LAND"

BERNE — Swiss cows produce enough manure every year to coat the entire country seven times over, according to figures released this week by the Agriculture Information Service.

In one of the more esoteric examples of the Swiss passion for statistics, the office discloses that the typical Swiss cow relieves itself 10 to 12 times every 24 hours, producing enough manure to cover a square metre of land.

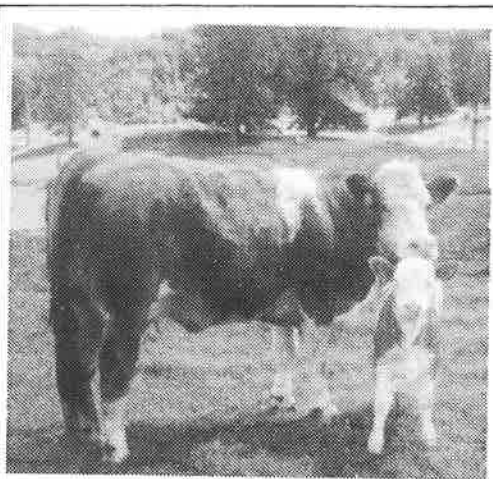
This means that Switzerland's 825,000 cows could — in theory — coat the country of 41,293 sq km more than seven times every year.

For those who really want to know, the information service adds that the average cow pat weighs 250 g and covers an area of 1,068 sq cm. — Reuter.

## TENA KOE.. TENA KOE..

I AM TOKAWEKA NATIVE (Polled)

I will be on the 1987 A.1. SIRE LIST.



I AM THE SIRE IN A GRADING  
UP PROGRAMME WHICH WILL  
SEE ONLY MY POLLED DAUGH-  
TERS RETAINED IN THE HERD.

ENQUIRIES & INSPECTION WELCOME  
CLIVE BILLING, PAREKARANGI TRUST,  
HORO HORO  
R.D.1. ROTORUA. Ph (073)476-414

# Miscellaneous

## ADDITIONS TO A.I. SIRE LIST

(1) SBW MICKEY MANTEL (Canada) No. 839788 Tattoo 4P

Sire: Signal Opera  
Joliette

Dam: SBW Miss Beth Mr Clean  
Miss Archillies

(2) DEK DILIGENCE 223N (Canada) Tattoo T65585

Sire: Galant Gladis  
Suzette

Dam: Glende Metz  
Birke

(3) CSR BOLD FORTUNE 30R (Canada) Tattoo CSR 30R

Sire: Bold Basalt  
Moranda

Dam CSR Ms Hot Stuff 40M Fortune  
Miss Bigvalley Extra

(4) STUARTSLAW JOSEPH (Scotland) Tattoo STL-J15

Sire: Glenturk Grenadier East Hickington Dez.  
Mirandole

Dam: Aelplerin Flick  
Alfa.

(5) PINJARRA EXCELSIOR (AUSTRALIA) Tattoo AGHP  
Y004

Sire: EXTRA (MM) Cibo  
Lila

Dam: Pinjarra Ueli  
55A Tania

The foregoing bulls are available — Elders Breeding Services.  
Information may be obtained from either P.O. Box 97, Kaiapoi  
(Canterbury) or P.O. Box 1339, Hamilton.

(6) SINGLE NICK DOUBLETIME (U.S.A.) Tattoo ASA  
515323

Sire: MR CLEAN Abricot  
CKR Miss Cezon

Dam: Linden Miss Signal Signal  
Miss S Hyland

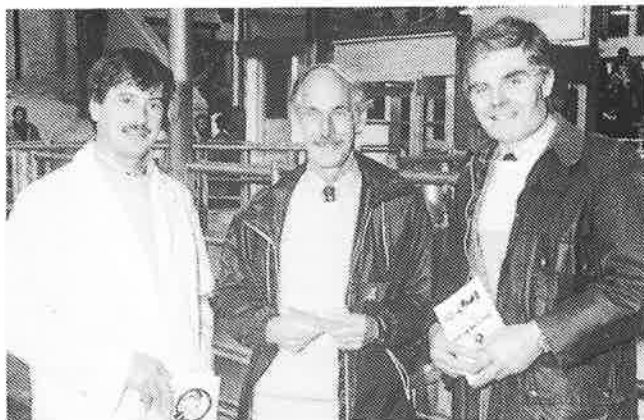
This bull is available — Ambreed N.Z.Limited. Information  
may be obtained from P.O. Box 176, Hamilton.

## AN IRISH SALE

The purpose of our overseas visit was to attend the wedding of our eldest son in Ireland but what could be more co-incidental than to discover that the North of Ireland Simmental Club were holding their annual Show and Sale a few days before and only a short distance from where we were staying. I attended part of the Sale which catalogued fifty-five bulls and sixteen heifers. The standard of cattle was excellent as was their presentation and it was interesting to see familiar pedigrees like Glenturk, Stuarlaw, Comber, Elaghmore, Ballyholly and others that appear in our own records.

Entries were judged in age classes similar to our Shows and their auction system was the same as ours except they work in 'guineas' in their prices, a hangover from the pounds, shillings and pence days which is still maintained in the livestock pedigree system.

The cattle I saw sold (bulls) were up to 1,900 guineas (approximately NZ\$5,700) with an average of 1,363 guineas (NZ\$4,000). The top heifer sold for 980 guineas (NZ\$2,940) Simmentals in Ireland are making strong inroads in the cross-breeding situation and are being strongly promoted. At the Sale my non native' accent gave me away and I was treated to tremendous hospitality by my Irish hosts who publically welcomed me and called on me to reply. Their cattle were very similar to our own top cattle with strong well grown animals. The criteria for their Sale was a minimum 400 day weight of 530 kg or if under 400 days the 300 day weight must be 386 kg. Scaled weights at 100 day intervals were shown in most entries. The top priced bull had a 400 day weight of 653 kg.



Wesley Minnis, Chairman of the North of Ireland Simmental Club, Ian Johnstone of New Zealand and Billy Robson, President of the British Simmental Society at the Annual North of Ireland Sale at Portadown.



Promote what you produce!  
An excellent gate sign seen in the Wairarapa.

**simbeef**  
symbol of progress



# Miscellaneous

## SOCIETY FEES/ITEMS FOR SALE G.S.T.

With the introduction of G.S.T. we are required to increase our fees and cost of items for sale accordingly. A new schedule is as follows:

### FEES: (Including G.S.T.)

Application for Ordinary Membership, Herd and Prefix. \$55.00

### Annual Subscriptions:

|                  |         |
|------------------|---------|
| Ordinary Member  | \$38.50 |
| Associate Member | \$11.00 |
| Simbeef Member   | \$11.00 |

### Registration and Transfers:

|                      |         |
|----------------------|---------|
| Purebred bull/female | \$22.00 |
| Seven-eighth female  | \$16.50 |
| Three-quarter female | \$ 8.80 |
| Half-bred female     | \$ 4.40 |

### Sales Levy:

- 1.1% at auction
- 2.2% on private sales.

### Calf Entry Sheet Pre-Listed Breeding Females (Annual)

|                                   |                   |
|-----------------------------------|-------------------|
| Beefplan Member                   | \$ 2.20 per entry |
| Herd Testing Dairy Members        | \$ 2.20 per entry |
| Non-Performance Recording Members | \$ 2.75 per entry |

Entry to Sire List: \$55.00

### Cattle Inspections:

|                                     |                |
|-------------------------------------|----------------|
| First five animals (one location)   | \$11.00 (each) |
| Next fifteen animals (one location) | \$ 5.50 (each) |
| Thereafter                          | \$ 2.20 (each) |

### Items for Sale

|                  |          |
|------------------|----------|
| Umbrellas        | \$30.00  |
| Field Note Books | \$ 4.50  |
| Gate Signs       | \$22.00  |
| Pens             | \$ 1.60  |
| Lapel Badges     | \$ 5.50  |
| Bottle Openers   | \$ 3.30  |
| Key Rings        | \$ 3.30  |
| Ties —Blue       | \$11.00  |
| Green/Brown      | \$ 5.50  |
| Allflex Tags     | 90 cents |

## IMPORTED EMBRYO DOCUMENTATION

We are aware that there are a number of breeders who have imported embryo from overseas and as a result calves are on the ground this season. We draw to their attention the requirements on documentation for registration for these calves, which is set out in Regulation 23 our Rule Book, which we repeat as follows:

### IMPORTATION OF FROZEN OR CULTURED OVA

23. 1. Importation of fertilized frozen or cultured ova will be recognized by the Society provided the requirements and regulations of the Simmental Society in the country from which the ova is obtained have been fully met and all fees paid, and that all appropriate requirements of the New Zealand Government are complied with.
2. That a declaration of authenticity and full documentation of the ovum transplant operation relative to the ova being imported, signed and certified by the Society in the country of origin is forwarded to the New Zealand Society Office together with pedigrees and blood type certificates for both the donor female and sire used.
3. The subsequent application for registration of progeny from imported fertilised frozen or cultured ova will be considered provided those requirements in '1. and 2.' are met and additionally those regulations laid down by the New Zealand Society for ovum transplants and registration of ovum transplant progeny and any other regulations are fully complied with.
4. All such progeny shall be blood typed and parentage certified prior to application registration.
5. The Council reserves the right to decline registration of any animal if there is any reason to doubt the information provided, or if any of the requirements enumerated have not been fully complied with.  
(Note: The Regulation on the importation of fertilised frozen or cultured ova may be altered at any time).

## MAGAZINE ADVERTISING

There are some points we should have advise members on our advertising and costs for the magazine. Our apologies for not being more specific. To clarify, costs are based as follows:-

1. **Space:** Inside covers \$120, outside back \$150.  
Internal full \$100, half page \$60, quarter page \$30.

### Typesetting:

This is done on electronic equipment outside and we charge the actual cost only and a small charge for layout. The actual costs if charged out at full commercial rate would be expensive to the extent of being unacceptable. Most of our advertising is submitted in 'rough or draft' form and has to be brought up to printing standard. Members may, if they wish, send photo ready copy.

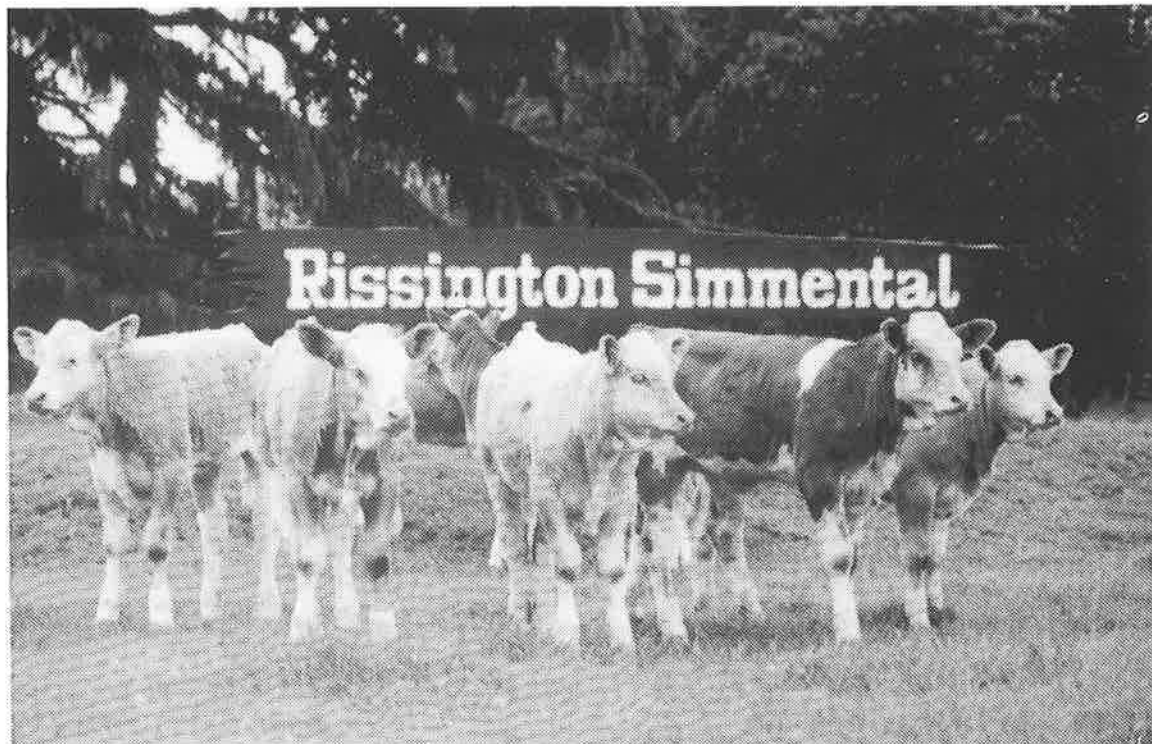
With the advent of GST this now has to be applied to the total cost.

**Photographs:** When we receive photographs for the magazine, (these are mostly standard prints off your film) we take it that they are duplicated. If you want them back please specify. Normally they are cropped and chopped around to fit space, then glued onto the printers sheet which makes recovery a bit of a hassle. If you have special photographs we will respect them and you will get them back unblemished but **please** say so when you send them in.

# RISSINGTON SIMMENTALS

NEW ZEALANDS LARGEST PERFORMANCE RECORDED HERD DEDICATED TO PRODUCING FUNCTIONAL CATTLE FOR BOTH THE STUD BREEDER AND COMMERCIAL FARMER.

1987 PROMISES TO BE ONE OF THE MOST EXCITING YEARS IN THE STUDS EVENTFUL HISTORY.



CANADIAN EMBRYO CALVES FROM BAR 5

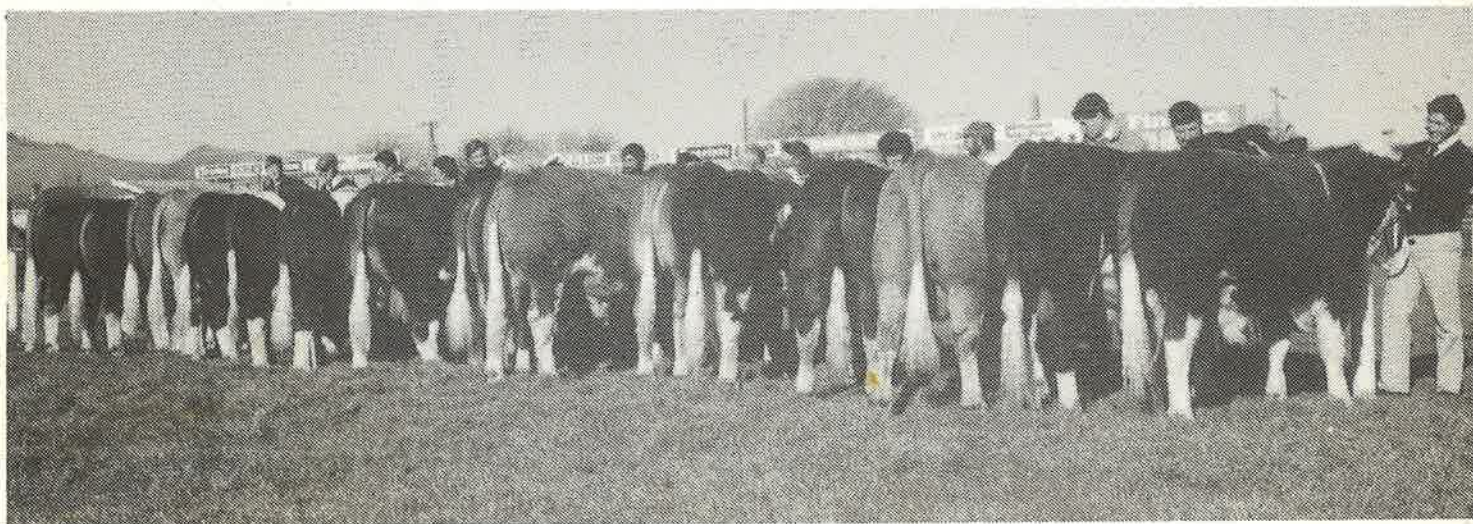
**APRIL 2nd** IS THE DATE FOR THE AUCTION OF ALL THE BAR 5 EMBRYO CALVES — A UNIQUE CHANCE TO PURCHASE NEW GENETIC MATERIAL FROM CANADA'S MOST FAMOUS STUD 'SPRUCEGROVE LAD', 'SHAWEST BIG RED' AND 'BAR 5 GENERAL' ARE Sires OF THE 48 CALVES (32 HEIFERS AND 16 BULLS) FROM 8 DIFFERENT DONOR COWS.

**JUNE 17th** OUR 5th ANNUAL AUCTION OF 80 PERFORMANCE RECORDED BULLS. STUD SIRE PROSPECTS BY 'LJB JADE', 'RISSINGTON MONITOR', 'RISSINGTON MAJOR'(AI.), 'RISSINGTON ZARZOU', 'INHERITOR'(AI.), 'BAR 5 DIGNIFIED'(AI.) AND 'AVONCROFT ASTER'(AI.)

**FEMALES & EMBRYOS** ARE FOR SALE BY PRIVATE TREATY.

FOR FURTHER HELP OR INFORMATION  
DON'T HESITATE TO CONTACT JOHN & STAR ABSOLOM (070)295-836,  
RISSINGTON SIMMENTALS, R.D.4. NAPIER  
OR ALAN GODSIFF (STOCK MANAGER) (070)295-834.

# **SIMMENTAL & SIMBEEF**



## **SYMBOLS OF PROGRESS**