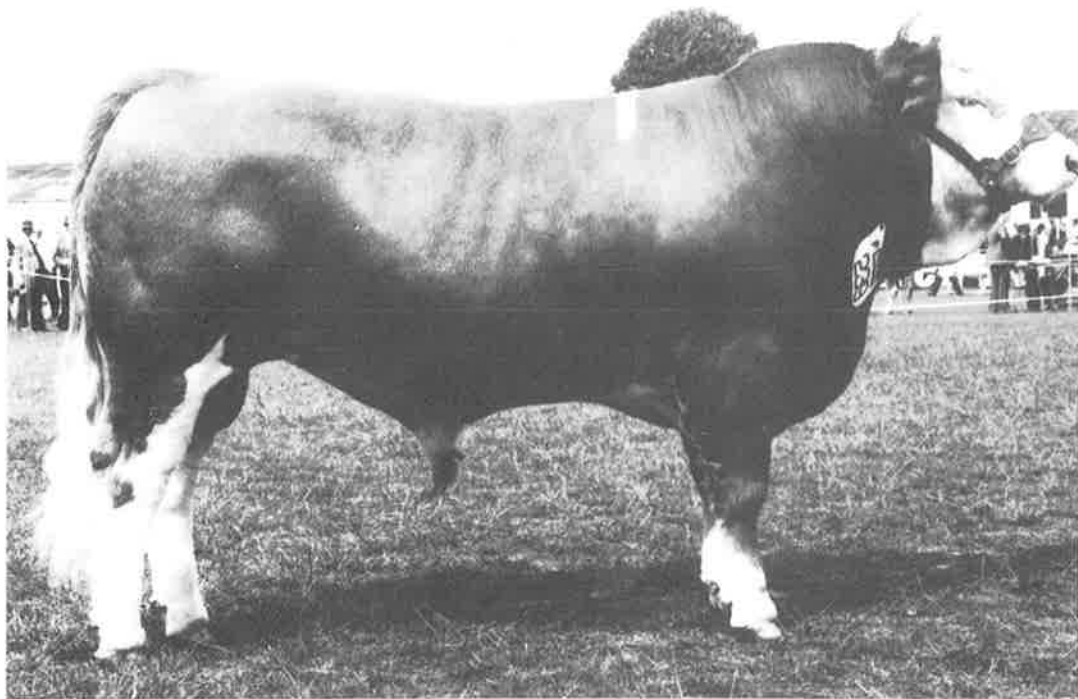


# **new zealand simmental**

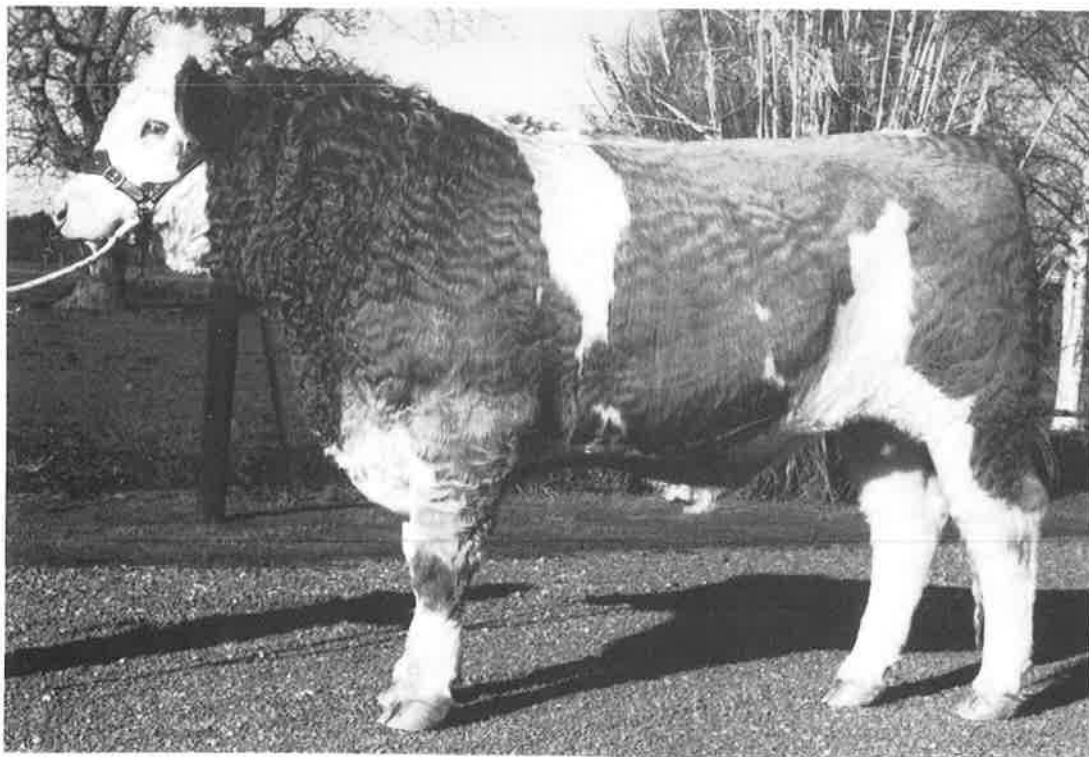


**autumn issue · may 1985 · number twenty three**

# RISINGHOLME SIMMENTALS



*'RISINGHOLE BRIGADOON II'. GRAND CHAMPION BULL 1982 ROYAL SHOW.  
TOP PRICED BULL N.Z. SALE SERIES 1983.*



*'RISINGHOLME NAPOLEON'. SECOND TOP PRICED BULL N.Z. SALE SERIES 1984.  
TWO BULLS OFFERED AT THIS YEARS SOUTH ISLAND SALE ARE BOTH BY 'BRIGADOON'*

**ENQUIRIES AND INSPECTION WELCOME**

Stan Crosson  
Murray Crosson

**'RISINGHOLME'**

No 2 R.D. Timaru  
Phone: St Andrews 368 & 358

# THE SIMMENTAL CATTLE BREEDERS' SOCIETY OF NEW ZEALAND (INC.)

118 VICTORIA STREET, CHRISTCHURCH 1, NEW ZEALAND.

P.O. BOX 25·100, VICTORIA STREET, CHRISTCHURCH. Phone 793·166

## Contents

Editorial . . . . .	3
Technical. . . . .	5, 6, 7
Club News . . . . .	9, 11, 27
Profile . . . . .	10
Royal Show . . . . .	14, 15
Shows . . . . .	18, 19
Simbeef . . . . .	21
Sales . . . . .	22, 23
Miscellaneous . . . . .	25, 29, 30

## Advertisers

Risingholme Simmentals—D. S. Crosson  
Coopental Stud—N. & D. Barnett  
Guthrey Breeding Services  
Lochamday Simmentals—G. Locke  
Robot Simmentals—J. & J. Robins  
Ohu Simmentals—G. Pearce  
Emerald Dale Simmentals—  
H., E. & J. Marshall  
Avon Park Simmentals—  
D. & M. Carter  
Tokaweka Simmentals—J. Houlbrooke  
Pineview Stud—W. Gut  
Pukekohu—H. R. Lowry  
Silvermoyle Stud—W. & G. Eccles  
Springbrook Simmentals—  
C. Patterson  
Waimiro Simmentals—A. Perry  
East Dome Stud—W. A. Rouse  
Rissington Simmentals—  
J. & S. Absolom  
The Levels—R. Cox

## Office Staff

Ian S. Johnstone  
(Secretary/Manager)  
Phone: Christchurch  
(Bus.) 793-166  
(Pvt.) 487-572  
Mrs Ann Boyce  
(Secretary)

Mrs Yvonne Kingsland  
Mrs J. Smith (Part time)

## EDITORIAL

To achieve a satisfactory result in any transaction between people a degree of thought and co-operation is necessary. The greater the effort the better the result. At this time of the year your office goes into a 'vortex' situation and there are seldom enough hours in the day or the week — it happens every year.

In an analysis of what we have to do and how we are going to do it we frequently find it is the errors and the omissions and the 'late arrivals' that create the problems. An incomplete transfer, an unfinished sale entry or an unclear request, all require a follow-up to clarify — unsolicited and extra work for our more than willing staff. It would ease our burden greatly if our members just gave a little more thought and effort when they are completing documents for the office — it helps us to help you. We ourselves are certainly not infallible but we do our best and that is in essence what we should all be prepared to do.

## COUNCIL MEMBERS

President:	H.R Lowry, Pukekohu, P.O. Box 2369 Stortford Lodge Hastings. Phone: 86 236
Vice President:	A.B. Perry, Penny Road R.D. 9, Palmerston North Phone: Rongotea 772
Councillors:	J.P. Absolom, Rissington R.D. 4, Napier Phone: Rissington 836 N.J. Barnett, Arohena, No.7 R.D., Te Awamutu. Phone: Pukeatua 820 D.C. Carter, Manor Farm, R.D. 1, Lyttelton. Phone: Christchurch299731 J.D. Graham, Waingaro, R.D. Parnassus. Phone: Parnassus 809 J.R. Houlbrooke, South Road R.D. 2 Waipu. Northland Phone: Waipu 15M W.A. Rouse, East Dome, Five Rivers R.D. 3. Lumsden Phone: Lumsden 86R

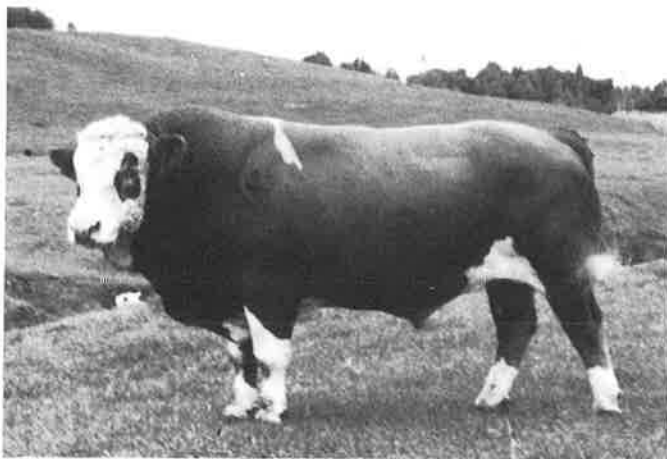
### CHAIRMAN OF COMMITTEES

FINANCE: H.R. Lowry TECHNICAL: N.J. Barnett,  
PROMOTION: A.B. Perry SALES: J.D. Graham

# Coopental Simmental Stud

**"MY THREE SONS":**

THREE HIGH INDEX BULL WILL BE OFFERED AT  
THE NORTH ISLAND SIMMENTAL SALE AT  
PALMERSTON NORTH ON 18th JUNE.



SIRE: *MMB HERMAN*

*'LOPEZ'*

Rank 1/48

B.V. +20.3

DAM: *LANDS GEISHA*

Rank 6/74

No assisted births over three calving seasons.

AS AN INDIVIDUAL *'LOPEZ'* WAS JUDGED RESERVE CHAMPION BULL AT THE 1983 ROYAL SHOW. HE ALSO  
Sired THE JUNIOR ALLBREEDS & SIMMENTAL CHAMPION BULL. THIS PLUS OTHER ACHIEVEMENTS  
MAKES *'LOPEZ'* ONE OF NEW ZEALAND'S FEW PERFORMANCE BACKED SIRES

## ENQUIRIES & VISITORS WELCOME

WRIGHTSON NMA  
Hugh Smith  
3781 CAMBRIDGE

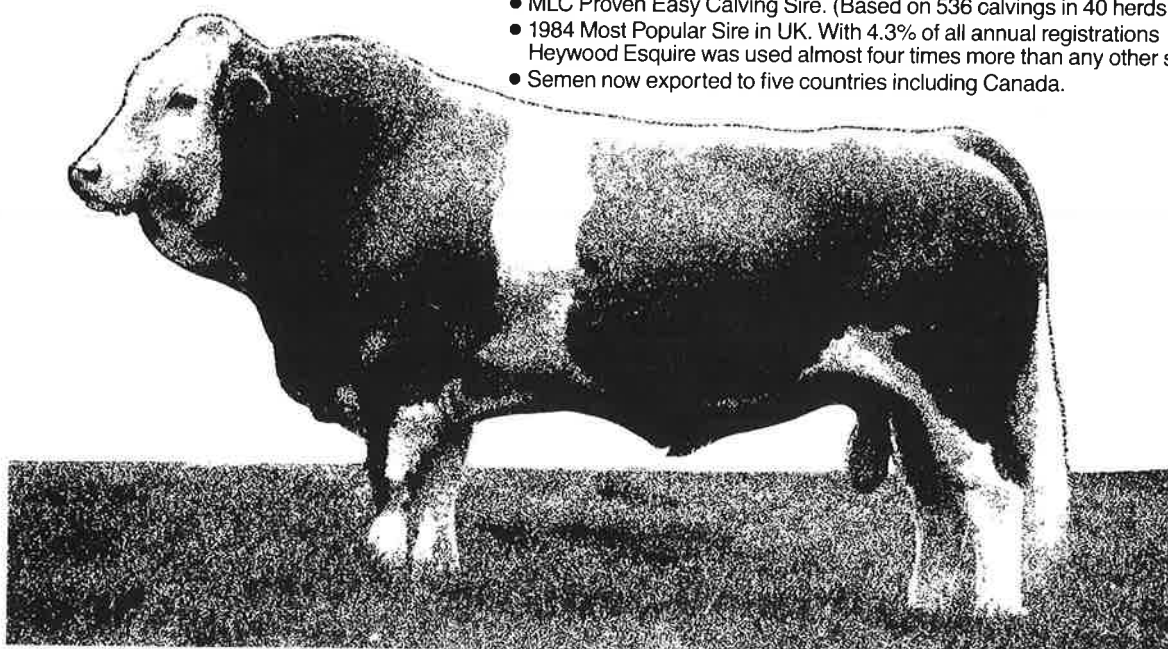
DALGETY CROWN  
Ted Norris  
58626 HAMILTON

FARMERS STUD STOCK  
Rod Harper  
73807 HAMILTON

COOPENTAL STUD  
Neil Barnett  
820 PUKEATUA

# Heywood Esquire

- UK Sire of the Year 1984.
- MLC Top Ranked UK Simmental Performance Sire.
- MLC Recognised Superior Breeding Female Producer.
- MLC Proven Easy Calving Sire. (Based on 536 calvings in 40 herds.)
- 1984 Most Popular Sire in UK. With 4.3% of all annual registrations Heywood Esquire was used almost four times more than any other sire.
- Semen now exported to five countries including Canada.



Semen Available:

GUTHREY BREEDING SERVICES Box 97 Kaiapoi Ph. (27)6175 and Box 1339 Hamilton Ph. (071)80190

# Technical

## FIELD DAY, AROHENA

At the end of February a field day was held on the property of Neil and Derian Barnett at Arohena. This event which was sponsored by the Society projected a workshop type situation in which those who attended could take more than an observer interest. Close on two hundred people attended what proved to be a well put together and most interesting day.

The attending people were divided into four groups after a welcoming address and spent a specified time at each of the four activities which had been set up. This involved dehorning, tattooing and the use of scales in one section, computer usage



*David Carter (Councillor) from Canterbury explains the techniques of tattooing. (Photo Waikato Farmer)*

and performance recording, show and sales preparation and animal handling and visual animal assessment. The Society's now well used set of beef slides were also shown and their message demonstrated.

Probably for the first time, the full Council of the Society attended the day which gave members an opportunity to meet them and discuss matters of interest with them. Councillors also took active part in providing demonstration in which they were also assisted by Tony Thompson of Waipukurau,



*Peter Packard, well known Beefplan M.A.F. Officer from Auckland talks on performance recording. (Photo Waikato Farmer)*



*The man who looks after our Computer records, Paul Harper, demonstrates a tele-link with the Wellington base computer. (Photograph Te Awamutu Courier)*

Peter Packard (MAP Beefplan) and Paul Harper of the computer centre in Wellington. Each section provided its own specific interest and those who attended were delighted with the presentation of a very well organised and informative day. It was a day with a difference in which members and visitors could become involved and go away with understanding and knowledge of but a few of the every day things that we are faced with in cattle breeding.

Full credit must be given to Neil and Derian for the provision of an excellent facility and their excellent organisation of the day — it went without a hitch or even the unfortunate (but welcome) rain that came in later in the day did not dampen the enthusiasm.



*Despite rain in the afternoon the programme continued with undampened enthusiasm. (Photograph Waikato Farmer)*

The pattern of this successful day will be used in other workshop type field days that will be held around the country.

# simbeef

symbol of progress



## CROSS-BREEDING

A contributed article —

**J. P. Absolom, Rissington**

This article is an attempt to answer and put in writing the benefits of a planned approach to cross-breeding for the prospective buyer of a Simmental bull.

Cross-breeding has boosted production and profits in other agricultural industries such as the sheep, pork, poultry and hybrid grains, and beef producers in some cases have been cashing in on its benefits. With the phasing out of the S.M.P.s to the detriment of the sheep industry rather than the beef, it will become increasingly important to have the facts available to the profit conscious and performance minded cattleman. Like artificial insemination and performance selection, cross-breeding is another modern breeding tool for increasing production.

Current research in both New Zealand and overseas shows that crossbred cattle are the most profitable for all segments of the beef industry, from the cow calf operators with weaners to sell and the fatteners, whether they kill their steers at the 20 months or the 2 and a half year stage. Simmental, cross unusually well with other breeds to produce an efficient animal that meets today's demands.

The term 'hybrid vigour' when cross-breeding is often bandied around, but this encompasses a lot of very important gains. Hybrid vigor alone increases reproductive efficiency, maternal ability, weight gain, longevity and hardiness under stress. Hybrid vigour has been shown in a multitude of trials to increase productivity by as much as 25%.

It is a small wonder that the results that are being achieved by 'Simbeef' cattle in the market place, when one realises the positive effect through cross-breeding. The desirable traits of two or more breeds are combined to produce a marketable animal or brood cow superior to either parent. Cross-breeding accomplishes more within one generation than can be accomplished in many generations of a straight one-breed programme.

Lets evaluate why Simmental work well in cross-breeding programmes. Firstly Simmental — the major breed from the European Continent — have a completely different genetic background than the traditional British breeds.

Secondly, not only are Simmental genetics new and different, they are predictable and consistent because they have been selected and performance tested in Europe for over a hundred years. That more and more breeders are performance recording in New Zealand now, can only help but develop a New Zealand type Simmental best suited to our own environment. Without records this is impossible to determine. The American Simmental Association produce an extremely well put together handbook on Cross-breeding which outlines a check list of factors to consider as you plan your cross-breeding programme.

### 1. Superior Breeding Stock

First choose the breeds that supply the needs of your programme. Next select from within

those breeds, cattle that are superior performers. The primary requirements for profitable cross-bred cattle is superior breeding stock. Find the best animals available with traits you want to improve in your herd. The better your individuals the better your cross-breds will be.

### 2. Growth in the Calf

Growthy, large framed cattle are in demand today, and bigger heavier calves at weaning are the major goal of most cross-breeding programmes. Hybrid vigour alone will increase weaning weights. Cross-breeding with Simmental will result in maximum hybrid vigour, combined with superior growth and carcass cutability.

### 3. Milk in the Cow

Cross-bred calves are unable to fulfill their greater growth potential unless your cows have milking ability. This is why a Simmental cross-bred cow herd, with milk production bred in, is essential for maximum returns.

### 4. Carcass Desirability

Today's market demands lean, high yielding carcasses that grade P's. Cross-bred Simmental produce carcasses with outstanding yield, a high percentage of lean and minimum waste fat. With no yield grading in New Zealand however, this is a gain to the meat exporter at the expense of the producer.

Some heritability estimates for economically important traits.

#### High Heritability Traits

(respond strongly to selection)

Birth weight	35%
Milk production	40%
Yearling Weight	45%
Yield grade	50%
Retail cut per day of age	40%

#### Medium Heritability Traits

(respond well to selection)

Weaning gain	25%
Weaning weight	25%

#### Low Heritability Traits

(respond poorly to selection but improve dramatically through cross-breeding)

Male and Female Reproductive Performance	10%
Calf Survival	0%
Hardiness	0%
Longevity	0%

### Plan Cross-Breeding to Maintain Hybrid Vigour

Haphazard cross-breeding will result in declining levels of hybrid vigour, with each new calf drop. To prevent this, matings must be planned so that new genetic material is constantly being introduced into your herd.

Here are three cross-breeding plans that will effectively maintain hybrid vigour from one generation to the next.

1. The simplest system is to run a herd of first cross

# Technical

dams, such as Simmental Cross Angus or Simmental Cross Hereford. The dams should be mated to a terminal sire such as the Charolais, Limousin etc., with all the off-spring being slaughtered. New dams would be either bred or purchased. Because the Simmental has superior milking ability she is an ideal dam in a terminal sire situation.

2. A breeder may criss-cross where sires of both parent breeds are used alternately on the cross-bred dam. Thus a Simmental bull would be used for the first generation and the Angus bull used for the second generation of Simmental Cross Angus dams. This would maintain a half-bred herd with a permanent advantage of 14% over a straight bred herd.
3. This latter technique can be expanded to include other sire breeds, all used alternately on the cross-bred dam. This is rotational cross-breeding. More information can always be obtained from your local Sheep and Beef Husbandry Officer at the M.A.F. Office.

Cross-bred females generally mature earlier, have higher conception rates, and calf crop percentages, present fewer health and calving problems, produce more abundant milk, wean significantly heavier calves, and remain in the breeding herd longer.

Let us never forget a purebred exists, only to serve the commercial industry. Nothing that we say or do is of value, if it cannot be turned into profit for the commercial farmer.

## EAR TATTOOING EQUIPMENT

In the last issue we mentioned the availability of Horstmann tattoo equipment and as a result have received several orders. Unfortunately the Christchurch agents received only a very small part of their order from the indent agent and we have consequently not received what we require — we are still expecting further supplies and will contact those who have ordered as soon as we know something.

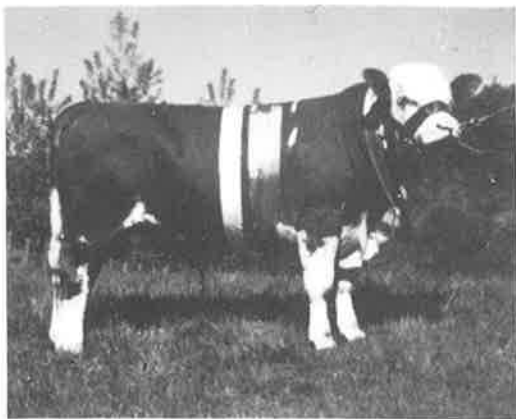
There is still the alternative of 'Farm-Acy' equipment from Palmerston North but this is a two plier application. The explosion of the Mohair industry has possibly not helped the situation as they like the same equipment and we are suspicious some of the supplies ordered by our agent may have gone direct to them from the indent agent.

## COMPUTER PAPER FLOW

**Calving Reports** — This document is a print-out of the calves you have entered on your Calf Entry Sheet. It is sent to you for final scrutiny, alteration or addition before printing your Registration Certificates.

**PLEASE DO NOT SEND IT DIRECT TO THE COMPUTER OR BEEFPLAN**

It contains initial information for the office on your herd and its structure. If you are a Beefplan member entering weaning weights we will forward it on to them.



### **LOCHAMDAY B.V. 'PACE'**

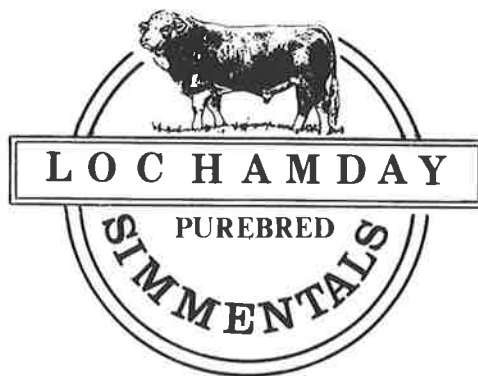
SIRE: BAVARIAN S.V. DAM: ALSTON FAVOURITE (IMP. U.K.)

*"He's setting the pace"*

★ WINNER 1984 WAIKATO SHOW MEAT & WOOL CUP.

★ WINNER 1985 TE KUITI SHOW MEAT & WOOL CUP.

**CONGRATULATIONS TO COOPENTAL SIMMENTALS  
ON THE RECENT SHOWRING SUCCESS . . .**



**A LIMITED NUMBER OF FULLBLOOD  
CATTLE FOR SALE.**

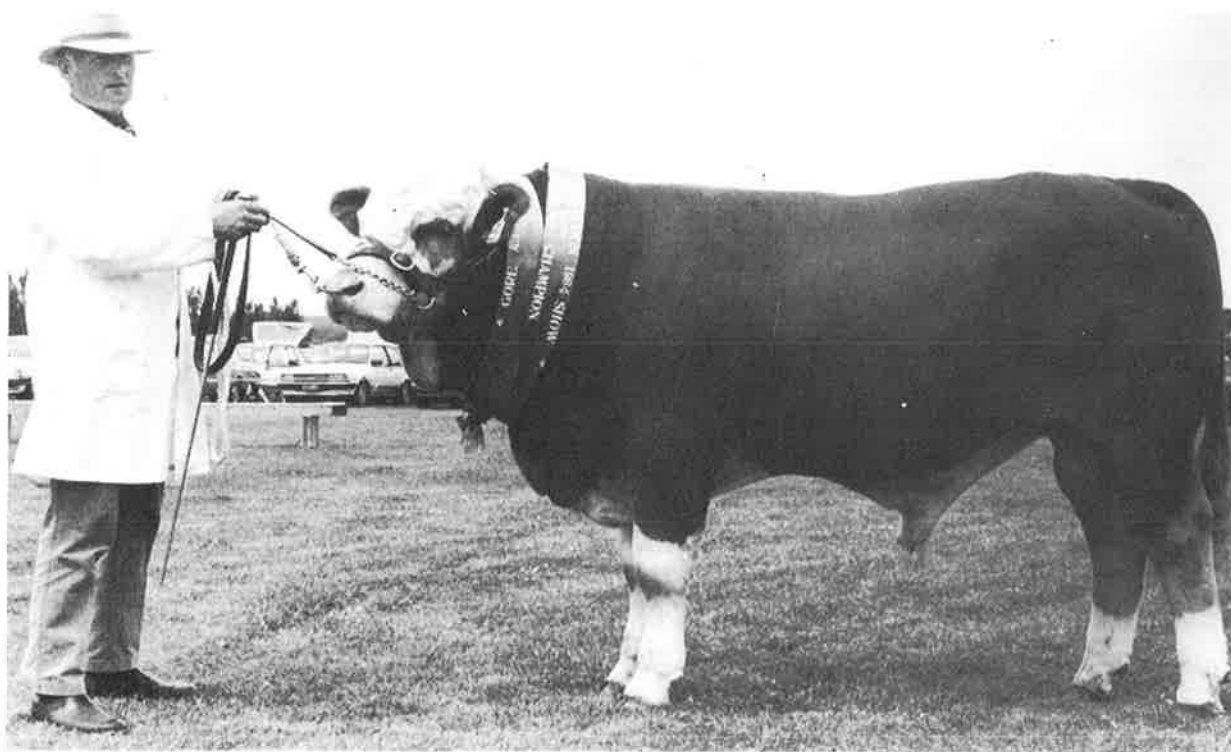
**WE ARE EMBARKING ON AN EMBRYO  
TRANSFER PROGRAM WITH SEVERAL  
OF OUR PROVEN BREEDING COWS.**

*We invite you to discuss our Breeding  
Proposals.*

**GARY LOCKE, HOLLAND ROAD R.D.4 HAMILTON  
PHONE 291-730 (HAMILTON)**

# ROBOT SIMMENTALS

PEDIGREE IS ONE THING : PERFORMANCE IS EVERYTHING



## **'ROBOT PASSPORT' Born 13-7-83**

*BIRTH WEIGHT:* 43.5 Kg

*WEANING WEIGHT:* 453 Kg (14-5-84)

*YEARLING WEIGHT:* 550 Kg (13.10.84)

*610 DAY WEIGHT:* 840 Kg

*SUMMER DAILY WEIGHT GAIN:* 1.37 Kg (3.89 lbs)  
FOR 157 DAYS

### *SHOW RECORDS:*

1st YEARLING BULL, OTAUTAU

1st YEARLING BULL, GORE

1st IN YEARLING GROUP (All by 'LUTHER')

CHAMPION BULL

SUPREME CHAMPION SIMMENTAL

2nd JUNIOR ALL BREEDS

4th YEARLING BULL, ROYAL SHOW (Class of 14)

4th ALL BREEDS YEARLING PAIR (Class of 24)

### **HAMPSHIRE PORTIKUS**

#### **ROBOT LUTHER**

**SUNDOWNER ESTELLA:** DAM 'ROBOT MINSTREL'  
(Topped Sale 1983)

#### **'ROBOT PASSPORT'**

#### **PANTHER**

#### **ROBOT LADY JANE**

**ELGAMORE ELMA:** Dam 'LJB JADE' (Topped Sale 1980)

**JOHN & JOYCE ROBINS, ARMAGH PARK, WINTON, SOUTHLAND.**



# Club News

## SOUTHLAND CLUB HOLD COMMERCIAL FIELD DAY

A 'Beef' day was recently held in Southland at Dunrobin Station near Mossburn, the property of Bernard Pinney. This property borders the Aparima River and runs up to about 1,000 metres. Simmental cattle have been run on this property since the early days of the Society when a small registered herd was started using the Station's Hereford cows as a base. The registered herd was subsequently dropped but the cross-breeding of Simmentals was continued on a commercial basis and in recent years Simbeef weaners from Dunrobin have become a feature of the weaner calf markets in Southland. The 'Beef' day was open to all area farmers and attended by about fifty people who were shown the Society owned slides on beef cattle, followed by an address by Mr Pinney on his property. Mr David Frith of the N.Z. Meat Producers Board gave a brief talk on the export markets and beef grading systems. Following talks and discussion visitors were taken on a tour of the property inspecting various mobs of cattle including cows and calves about to be weaned. Also on the property were a group of outstanding Simmental cross steers that had been brought in from the property of Mr Stan Dickie and his son David. These cattle brought great



*Last year's weaners, returned to Dunrobin for the day make an impressive group.*

favourable comment. It is interesting to note that Dunrobin weaner steers again topped the local weaner market of 1,280 calves for another year bringing \$530 at the time a record for the South Island.

The day concluded with a barbecue meal at Mossburn.

## OHU SIMMENTALS

**HERD 573**

**OFFERING FOUR TOP 2 YEAR BULLS AT THE YEARS  
NORTH ISLAND SIMMENTAL SALE,  
TUESDAY 18th JUNE AT PALMERSTON NORTH.**

**LOT 4**

**LOT 5**

**LOT 21**

**LOT 22**

ALL FOUR SIRES BY  
'SOUTH PACIFIC AVON'  
WHO WAS BY 'SIR AVON  
PARK EXTRA' GRAND  
SIRE EXTRA (CSA)

*DAM: 'OHU AK6'*

*DAM: 'OHU BJ31'*

*DAM: 'OHU AM27'*

*DAM: 'OHU BH15'*

**INSPECTION & ENQUIRIES**

**GILBERT PEARCE, No 1 R.D PUTARARU. PHONE PUKETARUA 823**

## OVERSEAS VISITORS

From time to time various young people appear in New Zealand who are holidaying or working their way round the world who have come from Simmental orientated properties in their home country. A number, to my knowledge have helped on breeder's properties with Show and Sale stock and have proved most adaptable and helpful.

Quite recently one of our breeders was looking for such as person for the summer season and as a result of a letter to Canada received several replies and now has a young Canadian on his property. These young people are about and such as arrangement can have excellent exchange results for our young kiwis going overseas. If anyone wanted to do a similar exercise the office will happily furnish overseas addresses for contact.

## Tattooing — Year Letter Sequence

<b>Year Letters:</b>	1981 = M
(For calves born between	1982 = N
the 1st January and	1983 = P
31st December).	1984 = R
	1985 = T

## A DAY 'OVERSEAS'

We are an 'Island' country and to most of us there are but two — the North and the South or visa versa (depending where you live!) There are however, quite a galaxy of smaller Islands around our coast line that not many of us know much about. Motiti Island is probably unknown to other than those who live in the Bay of Plenty and not a great number will have been there.

On the 9th March a group of some seventy Waikato Club members and friends were fortunate in being able to visit Motiti Island for a field day with a difference. Motiti is about eight miles due east off Mount Maunganui and accessible by sea or light aircraft. Thanks to the generosity of Don and Vern Wills and Abe and Sally Aukaha transport was laid on in the form of the Island barge which serves as the transport for livestock machinery and heavy freight for the Island. The craft is large enough to carry about 30-40 head of cattle and coped easily with the contingent of visitors. The journey across to the Island took an hour and a half and during which a group of enthusiasts trolled for fish with some success — the biggest one, 'got away' much to the disappointment of Gilbert Pearce. On arrival, transport in the form of tractors and trailers and four wheel drive vehicles met the visitors and took them over to a beautiful beach for a cup of coffee before setting out for a tour of the Island.

Motiti is approximately 1,600 acres and roughly oval in shape, gently rolling contour and about 200 feet above the sea. The Island is divided approximately in half with the seaward side being historical Maori tribal land occupied by a number of families and the inshore half owned and farmed by Don Wills and his family. Cattle are the main enterprise on the Island.

Don Wills farms the inshore end of the Island and bought it some seven years ago. He runs close on 500 head of cattle which are mainly Simmental cross in various stages up to purebred. As a base he has used Angus and Angus/Hereford cross and the crossbred calves which were about to be weaned were most impressive. Don's property is all in grass and well sub-divided and although it has not been topdressed for seven years the pasture is strong and vigorous. A number of bulls are bred each year for home use and sale and a group of these were shown — well grown and reflective of the good conditions under which they are raised. Don aims to have a breeding herd of 400 cows and will continue to breed a commercial herd as well as his registered cattle. Steers from this property go away fat. Some might say it must be awkward to get cattle to the market but an hour and a half in a barge is probably better than the same time in a truck — there are no corners or hills!

From Don's property we went to the other half of the Island which has a long history of Maori settlement. Captain Cook sailed close to it in 1769 and noted the 'most extensive complex of fortified villages he had yet seen'. There were a number of early European houses, still occupied and an early Church (recently re-roofed for preservation). The area is under a complexity of titles and is inherited by bloodline. Abe and Sally Aukaha farm a portion of the area and a few years ago Sally, who is the 'resident farmer' decided she would like to start a Simmental Stud. One who does not make idle statements she has, and in the space of four years her progress has been outstanding. With a good herd of breeding cows, wisely selected, she already has a very tidy and potentially excellent Stud herd. She put before us some excellent cattle and if her weaner bull calves are any indication of what she will achieve in the future, those 'mainlanders' will have some competition in the Sales and Show arena. Sally addressed the visitors with confidence on her objectives with her herd and she surely has a grip of her subject.

Following the tour of the Island we returned to the beach where an enormous barbecue had been prepared with fresh crayfish, shell fish as entree — specially caught for the occasion. The rest of the beautiful afternoon was spent on the beach awaiting the full tide and time was passed with an impromptu cricket match with a field of over thirty (most unfair) and people just idling about and talking. The return journey ended up in the dark and Don Wills skillfully took the large barge into the Kaituna river mouth without lights, no mean feat but probably done on many occasions by canoe in the early days.

Of the many field days and farm visits held over the years in many areas Motiti could be one of the most memorable. The tremendous hospitality and spontaneous friendship of the 'Islanders' was something that is perhaps a reflection of an unspoilt and isolated environment. Those who went were lucky to have done so.

To Motiti a very large and sincere thank you.



*Arrival at Motiti by barge.*



*Our principal hosts.  
Vern Wills, Sally and Abe Aukaha, Don Wills of Motiti.*



*Island transport for the Field Day.*



*'Barbecue Beach'.*



*A startling example of a halfbred calf on an Angus cow.*



*A long way from home. 'Pendeen CF2' was bred at Hororata (Canterbury) in 1975 and has 'worked' her way north and is now a permanent resident on Motiti.*



*Sally Aukaha's group of stud cattle.*



*One of Sally's outstanding purebred bull calves.*

# EMERALD DALE

## ***FOR SALE***

### **'EMERALD DALE JAMES'**



E.D. BEEFMASTER

EXTRA. CSA 357

'EMERALD DALE JAMES'  
(Born 23-8-83)

SOUTH PACIFIC CANDY II

E.D. SHELLEY

LIELI. CSA 33

E.D. CG2

TOP BULL CALF AND RESERVE CHAMPION MALE.  
WAIKATO SIMMENTAL CLUB SHOW 1984.  
JUDGED BY PANEL OF INTERNATIONAL JUDGES  
WORLD CONGRESS N.Z. TOUR.

**'EMERALD DALE JAMES'** WILL BE OFFERED AT  
**THE NORTH ISLAND SIMMENTAL SALE ON**  
**18th JUNE AT PALMERSTON NORTH.**

5 'EMERALD DALE' BULLS HAVE BEEN ENTERED FOR THE  
ANNUAL WAIKATO CLUB SALE.

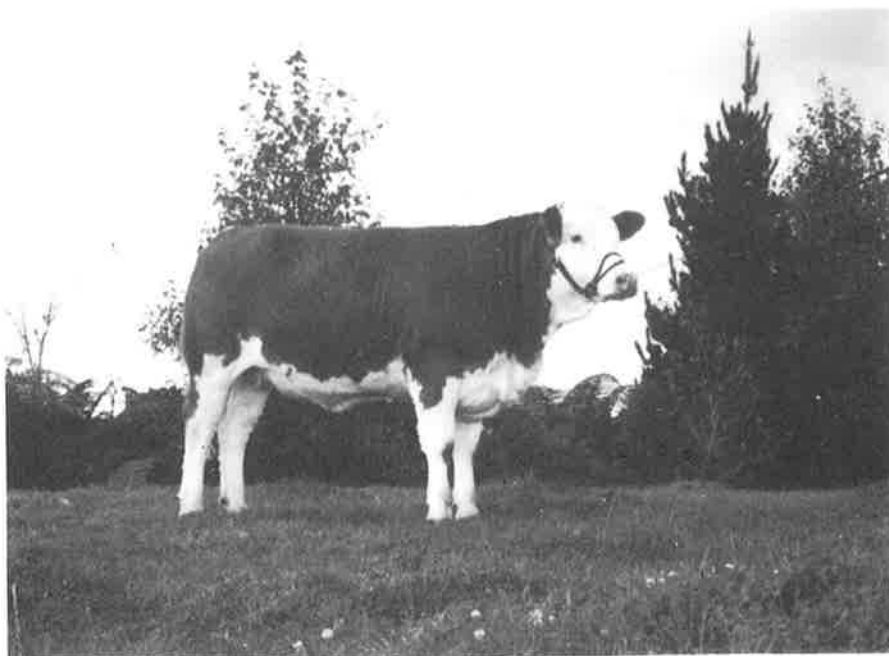
## **HAROLD, EILEEN & JAMES MARSHALL**

# SIMMENTALS



## **'EMERALD DALE EILEEN**

CHAMPION ALL BREED YEARLING HEIFER, WAIKATO SHOW 1984  
SUPREME CHAMPION ENTRY WAIKATO SIMMENTAL CLUB SHOW 1984 & 1985



## **'EMERALD DALE NITA**

RESERVE CHAMPION ALL BREEDS YEARLING HEIFER, WAIKATO SHOW 1984

**McLAREN FALLS ROAD, KAIMAI, RD1 TAURANGA**  
**Phone (075) 411-099 or 411-102**



# Royal Show

## 1984 ROYAL SHOW

Held in December at the Southland A. & P. Showgrounds, Invercargill the 1984 saw one of the best line ups of Simmentals seen in the country since we started showing in 1977. The standard was consistent and excellent which was adequately shown in the inter-breed classes.

Supreme Champion Bull (and Breed Champion) and Senior Female Champion came from the well known Levels Stud in Timaru, with Junior Champion Female being won by J. A. & M. J. Robins of Winton and Junior Champion Bull by R. W. Lott and Son of Garston.

Mr O. J. Osborne of Leeston took over the judging of the breed at short notice due to the unfortunate hospitalisation of J. D. Graham (who we are pleased to say is now back in good health). He was faced with a somewhat difficult situation in that the breed was given a 'short schedule' of 5 classes resulting in some large classes (Junior Bulls 17 and Heifers 14).

It was in the inter-breed classes that Simmentals really made their mark, as they are doing elsewhere and results were as follows:

Bull, 2 years and over (9 entries)

'Rissington Major' Levels Stud, Timaru. 1st.

Bull, (Yearling) (24 entries) R. W. Lott & Son, Garston. 1st.

C. J. Patterson Lakeside, 3rd.

Cow over 2 years with calf (17 entries) C. J. Patterson, 3rd.

Heifer, 2 years (12 entries) A. W. & P. A. Duncan, Mossburn. 1st.

Heifer, Yearling (30+entries) D. C. & M. J. Carter, Lyttelton. 1st. K. R. Hinton & Sons 2nd. J. A. & M. J. Robins 4th.

Bull and heifer, pair, (25 entries) R. W. Lott & Son, Garston. 1st. C. J. Patterson 2nd. J. A. & M. J. Robins 4th.

The Meat & Wool Cup was won by a very good Shorthorn bull entered by Mr P. Bailey of Cambridge. The Levels entry 'Rissington Major' was placed 4th.

Individual Simmental Class results were as follows:

### Senior Bull

1st 'Rissington Major' Levels Farming, Timaru.

2nd 'Marshaw Neptune', D. M. Elliot, Timaru.

### Yearling Bull

1st 'Sunnyvale Picasso', R. W. Lott & Son, Garston.

2nd 'Springbrook Sir Lancelot', C. J. Patterson, Lakeside.

3rd 'Malvern Downs Pride', R. W. Gibson, Tarras.

4th 'Robot Passport', J. A. & M. J. Robins, Winton.

### Cow (2 years and over with calf)

1st 'Wroxall Pride', Levels Farming, Timaru.

2nd 'Sunnyvale Melanie', R. W. Lott & Son, Garston.

3rd 'Robot Lady Jane', J. A. & M. S. Robins, Winton.

4th 'Springbrook Mandy', C. J. Patterson, Lakeside.

### Heifer (2 years)

1st 'Centre Burn Nicol', A. W. & P. A. Duncan, Mossburn.

2nd 'Malvern Downs Natalie', R. W. Gibson, Tarras.

### Heifer (Yearling)

1st 'Robot Perfecta', J. A. & M. J. Robins, Winton.

2nd 'Patsy AP106', K. R. Hinton & Sons, Alexandra.

3rd 'Avon Park Posy Girl', D. C. & M. J. Carter, Lyttelton.

4th 'Robot Playmate', J. A. & M. J. Robins, Winton.

5th 'Springbrook Pearl', C. J. Patterson, Lakeside.

6th 'Avon Park Panache', D. C. & M. J. Carter, Lyttelton.

### Pair Heifers

1st J. A. & M. J. Robins,

2nd D. C. & M. J. Carter,

3rd A. W. & P. A. Duncan,

4th A. A. T. Partridge.

### Bull & 3 Females

J. A. & M. J. Robins.

## CHAMPIONSHIPS & TROPHIES

Senior Champion Bull & Supreme Champion Simmental 'Rissington Major' Levels Stud.

Winner of Society Salva, Wairaki Challenge Trophy, Southland Club Sash.

Reserve Champion Bull 'Marshaw Neptune', D. M. Elliot.

Senior Champion Cow 'Wroxall Pride', Levels Stud.

Winner of R. H. Kerr, Challenge Trophy, East Dome Challenge Trophy.

Reserve Champion Cow 'Centre Burn Nicol' A. W. & P. A. Duncan.

Junior Champion Bull 'Sunnyvale Picasso', R. W. Lott & Son.

Reserve Junior Champion Bull 'Springbrook Sir Lancelot' C. J. Patterson.

Junior Champion Heifer 'Robot Perfecta' J. A. & M. J. Robins.

Reserve Junior Champion Heifer 'Patsy AP106', K. R. Hinton & Sons.

'Coopental Trophy' Performance Class (16 entries)

Bulls 'Sunnyvale Picasso', R. W. Lott & Son, (Trophy Winner)

Heifer 'Pinelee Prudence', G. M. & I. E. Bain (Outram).

Society Herdsmans Trophy, W. Lott, Garston.

The Southland Club have established a permanent site for a Breed Centre' at the Showgrounds and this was well patronised by exhibitors and friends throughout the show for lunches and as a meeting place. Despite the distance to Invercargill a strong contingent of exhibitors from the Canterbury area went down to the Show to support their southern friends. During the show a most successful social gathering was held at the Ascot Hotel which was attended by a large group of people.



*Rodney Cox with his Supreme Champion, Rissington Major.*



*The Pavillion.*



*David Carter presents the Trophy for Champion Cow (Wroxall Pride) to Johnnie Izard and Mark Cox.*



*Judge Oakley Osborne sashes John Robins' Champion heifer.*



*A quality line up.*



*Pam Duncan with her Reserve Champion Cow.*



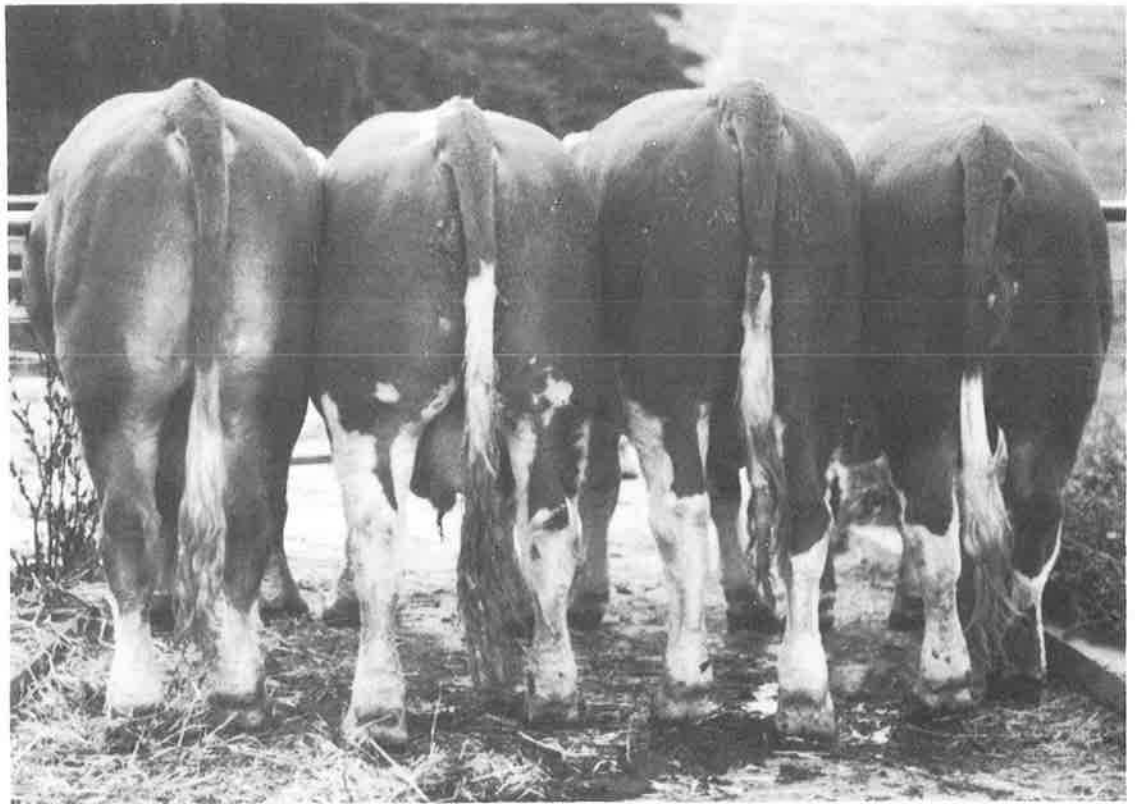
*Lunch at the Simmental Centre.*



*David Carter receives a ribbon in the heifer class.*

# Avon Park Si

## OUR 1985 SALE TEAM OF BULLS

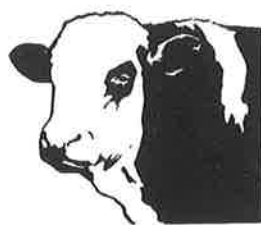


*Meet them face to face at the  
South Island Simmental Sale,  
Thursday 6th June, Christchurch.*

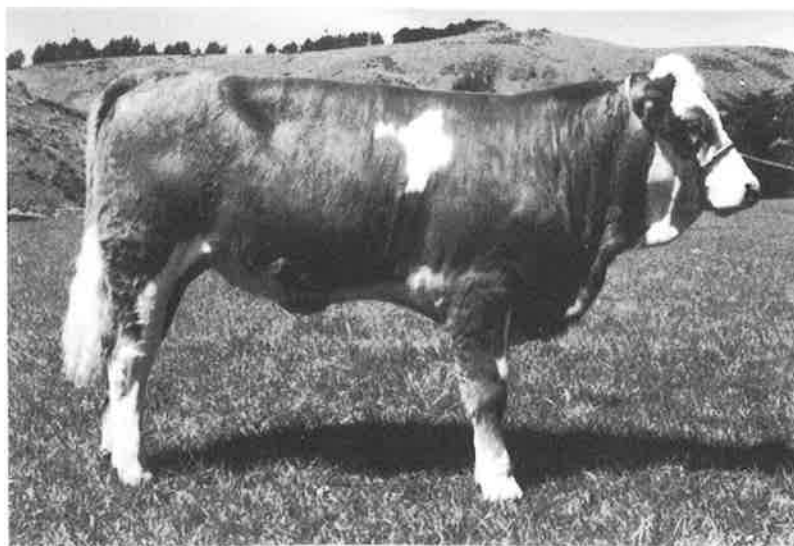
**BULLS & YOUNG FEMALES AVAILABLE FOR SALE THIS S**

**DAVID & MELIND CARTER, MANOR FARM, No. 1 RD L**

# Simmentals



**'AVON PARK POSY GIRL'** Winner, Best All Breeds Yearling Heifer. Royal Show 1984 (Invercargill)



## FOR SALE

**'AVON PARK PETAL'** (born 27-9-85). This heifer will be offered at the South Island Simmental Sale, Thursday 6th June.

ASON

*A FEMALE FOR BUYERS WHO WANT THE BEST.*

TELTON. PHONE (03) 299731 or GOVERNORS BAY 731

# Shows

## DANNEVIRKE SHOW

Four breeders took Simmentals to the Dannevirke Show with the following results:

### Two Year Bull

1st A. B. Perry, Palmerston North

### Yearling Bull

1st H. J. & E. R. Smyth, Mangatoro

2nd C. Hutching, Maharahara

3rd A. T. & A. A. Hall, Horoeke

### Bull Calf

1st A. B. Perry

2nd and 3rd H. J. & E. R. Smyth

### Two Year Heifer

1st C. Hutching

### Yearling Heifer

1st and 3rd H. J. & E. R. Smyth

2nd A. T. & A. A. Hall

### Heifer Calf

1st A. B. Perry

2nd C. Hutching

3rd H. J. & E. R. Smyth

### Two Heifer Calves

1st H. J. & E. R. Smyth

2nd C. Hutching

### Two Yearling (Bull & Heifer)

1st H. J. & E. R. Smyth

2nd A. T. & A. A. Hall

### Bull and Three Females

H. J. & E. R. Smyth

### Progeny Class

C. Hutching

Alan Perry's bull was Champion of the Breed and also took second in the Meat & Wool Cup to an Angus bull.

## WAIKATO CLUB STAGE THEIR ANNUAL SHOW

The Waikato originated what is the only 'private' Simmental Show in the country several years ago. The aim was to allow people to 'have a go' without the trauma of the public audience. It has become a regular annual event and is keenly contested.

Results this year were as follows:

### Heifers (10 entries)

1st John and Dell Hall

2nd Will Eccles

3rd David Pearce

### Yearling Heifers

1st Jim Marshall

2nd Mrs Jill Arbon

3rd David Pearce

### Champion Female

Jim Marshall

### Reserve

John and Dell Hall

### Bull Calves (13 entries)

1st Jim Marshall

2nd Will Eccles

3rd Robert Pearce

### Yearling Bulls

1st John Scott

2nd Robert Pearce

3rd Tony Rolley

### Two Year Bulls

1st Robert Pearce

### Champion Bull

Robert Pearce

### Reserve

John Scott

### Supreme Champion

Jim Marshall

### Club Herdsman Award

1st Nicky Rolley

2nd Pamela Eccles

### NOTE:

AN APOLOGY: We unfortunately printed an incorrect result in last year's Waikato Club Show results. The Supreme Champion animal was infact a heifer 'Emerald Dale Eileen' judged by a guest panel of overseas judges from the pre-Congress Tour. This heifer is owned by the Marshall family of McLaren Falls Road. Somehow we got the results 'cross wired' with Gary Locke's bull for which we apologise. (They were both excellent animals).

Following the Club Show the Club held its A.G.M.

John Scott was re-elected President with Gilbert Pearce as Vice-President. The Treasurer's job was re-located to Penny Scott (wife of John). In noting this meeting we would like to pay tribute to Ron Wallace-Wells who has been long time Secretary of the Club. During his term he has dealt with a hive of activity and we thank him from the office end of the system for his always cheerful and co-operative attitude.



John Scott, Waikato Club President on his farm.



# Shows

## NEW ZEALAND EASTER SHOW (Auckland)

Simmentals put up a good line of 19 cattle at the Easter Show in Auckland in January.

Class results were:

Yearling Heifer

- 1st J. R. Houlbrooke
- 2nd J. Marshall
- 3rd G. G. Pearce

Heifer Calf

- 1st J. R. Houlbrooke
- 2nd G. G. Pearce

Champion Female

J. R. Houlbrooke

Reserve

J. R. Houlbrooke

Bull

- 1st B. B. Anderson
- 2nd J. Marshall
- 3rd J. B. Scott

Bull Calf

- 1st J. R. Houlbrooke
- 2nd J. Marshall
- 3rd G. G. Pearce

Champion Bull

B. B. Anderson

Reserve

J. Marshall

Supreme Breed

J. R. Houlbrooke

Champion

All Breeds Yearling Heifer

- 1st J. R. Houlbrooke
- 2nd Angus
- 3rd J. Marshall
- 4th Mrs J. Arbon

(Another good day for J. R. Houlbrooke!)



*Jim Houlbrooke's top heifer with which he has had considerable Show success.*

## ROYAL SYDNEY SHOW

This year New Zealand breeders were few on the ground at Sydney — they must have all gone last year! However, we were not unrepresented as our immediate past President, Rodney Cox of Timaru was given the honour of judging at this prestige event, the first time one of our members has judged in Australia. Premier prize winner was Harry M. Miller (ex patriot) who took both the Bull and Female Grand Championship in over sixty entries.

## PAPAROA SHOW (Northland)

Our cattle appear at many Shows in varying numbers. J. R. Houlbrooke had a good day at Paparoa in January. He won All Breeds Champion Yearling Heifer, All Breeds Champion Calf and All Breeds Best Beef Animal.

## TWO YOUNG SIMMENTALLERS

Joanne Harwood (daughter of Warren and Barbara, Rangiora) writes:

Dear Mr Johnstone,

Here is a photo of our bull calf, 'Ohoka Ritz' and me taken at the Fairlie Show. I thought you might like it for your magazine. Justin and I like helping Dad with the calves.

From Joanne Harwood (age six)

Thank you Joanne, what a good photograph and a very well written letter. We really enjoy getting things like this from our younger members.



## CATTLE FOR SALE

On behalf of Mr Max Harrison seven-eighth cow with heifer calf, seven-eighth cow with bull calf, (All Registered), rising year pure bull and seven-eighth bull.

These cattle will be offered at the Western Southland Bull Sale at Castlerock on 20th June.

# TOKAWEKA SIMMENTALS

HERD 79



ESTD. 1972

## ANNUAL SALE

KAURI SALEYARDS, TUESDAY 25th JUNE AT 1.0 P.M.

**25 BULLS:** 15 POLLED & 10 HORNED  
21 PUREBRED & 4  $\frac{7}{8}$  BRED  
10 TRANSFERABLE — 15 COMMERCIAL

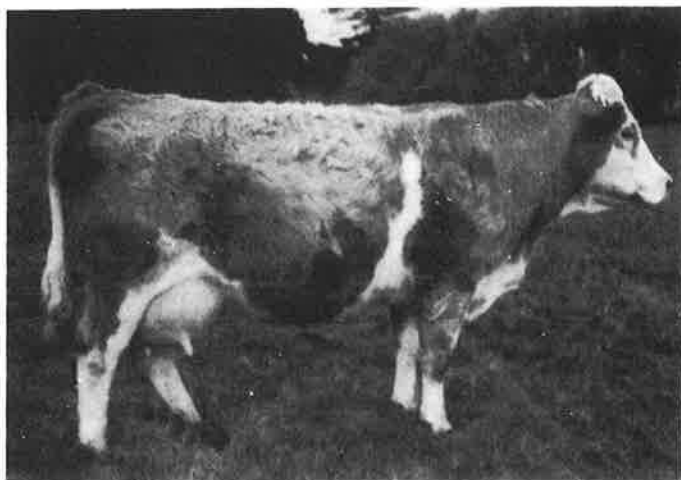
**10 FEMALES:** A SELECTION OF SURPLUS COWS & HEIFERS

*THE TOKAWEKA HERD HAS USED PREDOMINENTLY POLLED SIRES SINCE 1980. ALL STOCK FED ON GRASS AND HAY ONLY. INSPECTION & ENQUIRIES WELCOME. CATALOGUE AVAILABLE ON REQUEST*

**JIM R. HOULBROOKE, SOUTH ROAD, WAIPU, NORTHLAND. PHONE: WAIPU 15M**

# PINEVIEW SIMMENTAL STUD

Herd 52



Built up with imported semen from top Austrian Bulls.

We will offer 2 Bulls at the National Sale in Palmerston North.

All Stud Cows are included in Commercial Herd farmed at over 500 metres above sea level under Mt. Egmont.

Commercial Bulls for Sale

MARIANDEL — Dam of Lot No. **25**

Visitors Very Welcome

W. GUT 29 R.D. KAPONGA, TARANAKI.

PHONE 741 KAPONGA

**FOOTNOTE:**

Semen from two new Sires, Belami and Pingo is being sought and may be available this season.

# Simbeef

## SIMBEEF — WEANERS AGAIN TOP MARKETS

### TE AWAMUTU

Market Toppers. Simbeef Steers 18 @ \$501  
(Highest price other breeds \$450)

### CASTLEROCK

Market Toppers. Simbeef Steers 10 @ \$530  
(Highest price other breeds \$500)

Vendor B. Pinney, Dunrobin Station  
(Yarding 1,280)

### OWAKA

Market Toppers. Simbeef Steers 7 @ \$500  
Vendor, B. McGlaughlan

### CASTLEROCK

Market Toppers. Simbeef Steers 16 @ \$375  
Vendor, J. P. McPherson

### LORNEVILLE

Market Toppers. Simbeef Steers @ \$405  
Vendor, G. D. Anderson

### KAURI (Northland)

Market Toppers. Simbeef Steers Pen @ \$480  
Vendor, R. Woolhouse  
(Highest price other breed \$444)

### ADDINGTON

Market Toppers. Simbeef Steer 10 @ \$442  
Simbeef Heifer @ \$366  
(Yarding 1, 200)

### OWAKA

Market Toppers. Simbeef Steers \$500  
Simbeef Heifers \$375  
Vendor, McBean Estate  
(Yarding 2,000)

### ADDINGTON

Market Toppers. Simbeef \$462  
Vendor, P. D. Hastings  
(Yarding 723)

### TEMUKA

Market Toppers. Simbeef Steers \$465  
Vendor, R. Gudex  
(Simbeef Steers average \$69 more than other breeds)

### FEILDING

Market Toppers. Simbeef Steers \$435

### WAIPUKURAU

Market Toppers. Simbeef Steers \$495

### ADDINGTON

Market Toppers. Simbeef Steers 12 @ \$512  
Vendor, O. J. Osborne (9th consecutive year)  
(Last year's top price for same line \$480)  
(Yarding 2,800)

### WHATAROA (WESTLAND)

Market Toppers. Simbeef Steers \$374  
Simbeef Heifers \$336  
Vendor, George Butler, Bruce Bay  
(Simbeef calves realised over \$100 premium)

### STUDHOLME (South Canterbury)

Market Toppers. Simbeef Steers 9 @ \$380  
Vendor, Bauen More Farm.  
(Yarding 860)  
(Note: the sale was in the middle of a drought area)

## GORE A. & P. CARCASE COMPETITION RESULTS

### HEAVY WEIGHT STEERS

Hoof 1st M. Ayson (Simmental) 5th M. Ayson (Simmental)

Hooks 1st M. Ayson, 2nd S. Dickie (Simmental)

Supreme Champion carcase went to M. Ayson with his 5th placed Simmental on the hoof. The animal dressed at 425.5 kg. yielded 65.16% and got 31 points above the next best carcase for ribeye measurement.

### LIGHTWEIGHT STEERS

Hoof 2nd J. Falconer (Simmental)

### HEIFER CLASS

Hoof 2nd and 4th R. F. Townsend

Hook 3rd R. F. Townsend

## NELSON A. & P. COMPETITION

Rai Valley farmer Doug Reid took the double Championship at the Nelson carcase competition in 1984 with an excellent two year old Simmental cross steer. He won both hoof and hooks against 28 other entries. One other Simmental cross was entered by the R. R. Martin Trust of Wakefield and was placed 3rd.

While we did not receive this result until recently we would like to congratulate the Reid family who to our knowledge are first time competitors.

## EIGHTEEN MONTH STEERS SET RECORD

In mid-March Simmental cross steers set a record in Addington, Christchurch when Councillor Don Graham put forward his annual draft off his Parnassus hill country property. Ten of these extremely well grown steers sold at \$992. In August, 1983 Don also set a record with his steers he sold that year as yearlings, they bought a top price of \$482.

## TE KUITI SCORES AGAIN

Howard Symons who last year created a stir when he sold Simmental cross yearlings at Te Kuiti for \$660 eclipsed it last November when he put forward fourteen yearlings whose average weight was 480 kg. They sold to last year's purchaser for \$800 who is running these and last season's purchases in a comparative trial to three year olds with other cattle.



# Sales

## SALE AT KAIKOHE

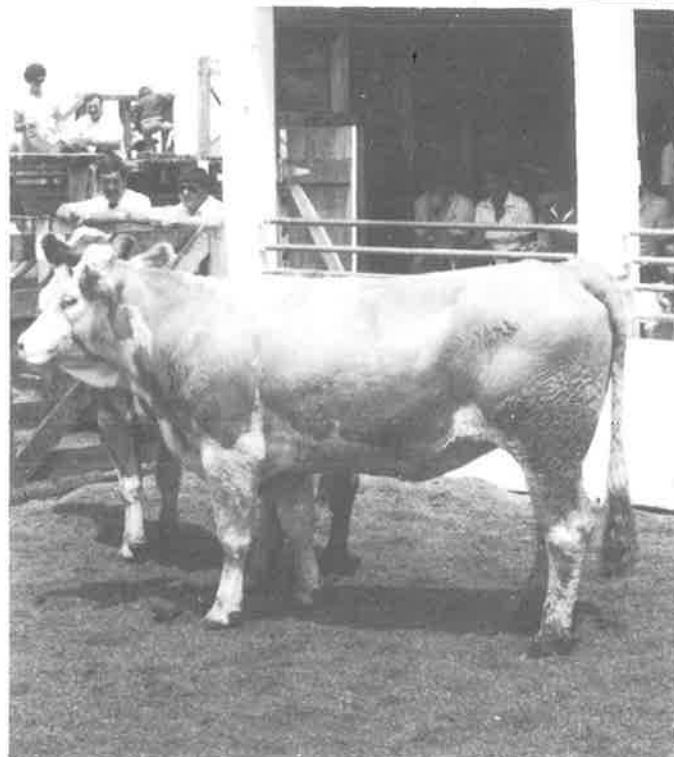
In January one of the largest group of Simmental cattle in Northland were dispersed as a result of the sale of the property owned by W. H. Korman, who at the wonderful age of 'four score plus' has decided to reduce his farming interest. Hiliel Korman formed his herd in the early 1970's through A.I. and the purchase of half bred cattle and the eventual importation of purebreds from the United Kingdom. Since then the herd has built up to one of the largest in the North Island and has been run under the day to day management of Allan Nisbett and the overall direction of Mr Korman. It is of interest that some of the early cattle still feature in the pedigrees and one 'Levels DC13' (1973) was dam of one very good three quarter bred cow that realised \$3,000. About that time two half bred were purchased by W. Korman at a South Island Sale for \$5,000 each!



*Hiliel Korman and his farm manager, Allen Nisbet at the Sale.*

The Sale held at the Kaikohe Saleyards was attended by a large group of people from the North Island and a few from the South Island. Prices realised were excellent with an average of \$2,223 for 129 lots and the Sale was strong throughout. The catalogue ranged from purebreds through to three quarter bred, all of which had been run on a commercial rather than stud basis so that what was put before the auctioneer was 'as is' without special preparation. They came forward in sound order with a proven breeding background which reflected the prices paid. Purebred cows averaged \$3,433 and heifers \$2,461. Graded cattle of which there were some excellent entries brought high prices with seven-eighth in-calf cows with calf at foot averaging \$2,685 and heifer \$3,050. Three quarter cows also had a good market and with calves at foot averaged \$2,221.

Some of the top prices of the Sale were \$5,200 for an 18 month pure bull, \$4,800 for purebred in-calf cow and calf, \$3,800 for seven-eighth bred in-calf cow and calf, \$3,100 for three quarter bred in-calf cow and calf.



*Top quality seven eighths heifers at Kaikoe.*

The Sale resulted in a wide distribution of the cattle offered which went mainly to North Island breeders. The few South Islanders who attended were not however unrewarded and took south the top priced lots as well as a good group of other selected animals. As a result of this Sale a number of new member herds have been established.

## APRIL SALES

Three Sales took place in April in the North Island which were a new departure from our normal pattern and an example of our continuing establishment.

The first at Frankton (Hamilton) on 15th April was on account of Mr J. Hammonds of Rotomara Stud who held a female reduction Sale composed of some 90 lots. The day prior to the Sale an 'open day' was held on his property allowing prospective purchasers a chance to inspect the offering at leisure.



*John Hammond (right) of Rotomara discusses the catalogue with Tony Thompson of Waipukurau.*

# Sales

Each lot had been clearly tagged and cattle sorted into age groups which made for easy inspection. The cattle were well presented which was reflected in the results of the Sale. Ninety three lots came under the 'hammer' before about 150 people which included a number of South Islanders. The gross turnover of the Sale was in excess of \$220,000 giving an average of \$2,373 per head.



*South Island buyers, Neil Oliver Hororata, Graham Paisley Balclutha and Snow Hellyer of Wrightson NMA Dunedin.*

Top price was \$6,000 for an excellent Mar-Zou heifer purchased by A. H. & G. M. Thompson of Waipukurau. I. & P. Wright of Canterbury made two purchases at \$5,000 and \$4,500 to add to their recently established herd at Loburn just north of Christchurch. The Sale that perhaps in its early stages looked as if it might lack sparkle proved to be strong and prices realised were excellent throughout with only one young animal realising below \$1,000.

At Rissington on 17th April J. P. & S. Absalom held their first Sale of females. The offering comprised five rising 3 year old females, eleven 18 month (in-calf) females and eight weaner heifers. Following the already established style of Rissington Station Bull Sales the standard of cattle was excellent and top lots were keenly sort by an enthusiastic bench of buyers. The turnover was close to \$84,000 giving an average of near enough to \$3,000 per head for twenty-four lots which was excellent when it is realised that almost half the offering were recently weaned heifer calves. Top price of \$5,600 was paid by G. Kemp of Gisborne for a 'Baron' bred 2½ year old heifer while several others realised \$5,000. In-calf heifers sold strongly at up to \$5,000 with weaner heifers to \$3,700. Buyers came from all over the North Island and several lots went to the South Island. The Sale must be heralded as highly successful.

Following the Rissington Sale a large dispersal Sale was held on the 18th April, on account of W. B. Cooper, Eketahuna, who is retiring from farming. 'Aintree', one of the earlier Society herds offered a sound group of cattle to a large group of buyers. It was unfortunate that the timing of this Sale coincided with a very serious drought in the area, one of the worst for many years and the cattle, as a result, came forward in very hard condition. Despite their

appearance they met a ready market and the turnover of eighty six lots realised \$96,000 giving an average of \$1,162 per head which was highly successful considering many of the cattle offered were still in the grading up system.

Top price was for a two year heifer at \$2,800.

The cattle offered were dispersed over a wide area with again, a number of lots going to the South Island. The dispersal of the Aintree herd gave many people the opportunity to purchase proven recorded stock at realistic prices and with an improved feed situation these cattle will be a well worthwhile investment. The presentation of some 180 females for Sale with a four day period in one Island could be a little daunting but the results have proved there is a strong demand for our cattle.

## 6TH WORLD CONGRESS: ARGENTINA

In November 1986 the 6th World Congress will be held in Buenos Aires in the Argentine. Already interim plans are well underway and we recently had a personal visit from the principal of the Argentinian travel agent in this regard. This Congress will present an opportunity to visit a country normally off the tourist trail which has great history and interest and a very large cattle population — some seventy million. Looking at the world map it looks pretty inaccessible but a direct air link has recently been established between Auckland and Buenos Aires (10½ hours) at what heralds to be a remarkably cheap rate of under \$2,000 N.Z. return. There is also an arrangement whereby return can be made through North America via Los Angeles with Air New Zealand. I hope to receive forward publicity of this event in the next few weeks and will be happy to send copy to interested people. If you are interested in attending this event please let me know. We have in Christchurch a travel agent who has very strong ties with South America and they have offered their services which look promising.

## OUR ANNUAL MEETING AND SALES

These events are now finalised and we look forward to seeing many of our members. There are amongst us though, a lot of new faces and we sincerely hope those that can will come along and please if we do not recognise you make yourselves known — it is not always easy to recognise people away from their home patch. At Christchurch we will have our Annual Meeting 5th June and Dinner 6th. You are most welcome but please let us know as soon as you possibly can so we can book you in for the dinner, which is open to members and friends. The Secretary/Manager will be at both Sales so if you want to discuss anything with him do not hesitate.

**HAVE YOU EVER ADVERTISED  
IN YOUR MAGAZINE ???  
HOW ABOUT THE NEXT ISSUE?**



# SILVERMOYLE SIMMENTAL TUD

*Special Offer  
1985*



## **STUDSIRE: 'SILVERMOYLE NEHEMIAH'**

Nehemiah is a natural polled, rising 3 year old. This outstanding bull is offered for sale after having been used in the herd for two spring and one autumn matings, has also stood A.I. Station.

His progeny are long growthy calves, over 50% polled, an ease of calving of 98% unassisted, and reared to weaning of 100% (including four sets twins).

Won First Prize at Waikato Club Show 1984.

Has strong dark colour feet, (never known to be lame) with pigmentation both eyes. Will be offered for sale at Waikato Club Sale if not disposed of earlier.

---

## **Other Bulls for Sale Include:**

'Silvermoyle Pressman', a solid red polled bull, at Palmerston North Sale, also 'Silvermoyle Punter' a dark honey colour bull (horned) at Waikato Club Sale. 'Punter' would be one of the top bulls I ever bred.

We have 20 other purebred service age bulls available, polled and horned.

**ALL ENQUIRIES WELCOME,  
WILLIE AND GENE ECCLES.  
PHONE MANAWARU 808.  
MANAWARU ROAD, RD 1, TE AROHA.**

# Miscellaneous

## NORTHLAND TO HOLD COMMERCIAL BEEF DAY

At the end of May (provisionally 30th) a commercial beef day will be held in the far North at 'Broadwood' near Kaitia. This will follow the pattern of showing beef slides with follow-up evaluation of cattle on the hoof. Councillor J. R. Houlbrooke is setting up the day with the help of other members in the Northland area and will use Simmentals for demonstration. Over a hundred people are expected to attend.

Note: Northland area people should watch the papers for final date and venue.

## TO PRODUCE A CATALOGUE

Each year you receive a catalogue for the sale of your choice — it comes complete and with hopefully minimal errors. Ever thought about its production? In two catalogues of eighty animals well over 3,000 separate factors have to be checked, typed, and then checked again. That does not include the Index, Conditions of Sale, the cover or the title pages or the advertisements!

## PHOTOGRAPHY

Recently most members would have received a request for advertising in our magazine (the response has been good) while we were about it we made a few suggestions on taking photographs. The response to this was also excellent and we have been asked to repeat it.

"If you want to put in photographs they should be clean and sharp, make sure your animal is standing well and not too far away. In taking photos take plenty and quickly — out of a twenty-four frame roll you should always get a few that are worthwhile. Avoid brilliant sunlight and scruffy background — a fence is a rotten backdrop, so are gates and rough shrubbery. Do not forget the handler — a beautiful animal held by guy (or gal) with the seat out of its pants does not do much for anyone! Use a little artistry."

The 'proof of the pud' has already come to hand. One 'ham' operator has come forward with a really top photograph taken on the above basis. Its a bit like duck shooting — get enough shot away and your bound to hit something!

## MOUNTAIN MURMERS!

A message from the 'sticks' is worth considering: Calving of cows and heifers. If you like to see your cows calving, without the aid of a torch and you don't want your sleep interrupted try feeding them (hay, silage or whatever) at 5 PM instead of in the morning — it apparently does work!

# PUKEKOHU

## MEAT & WOOL CUP WINNERS

### 1980 ROYAL SHOW 1983 ROYAL SHOW



**'MARAETOTARA PRINCE' WITH HIS DAM IRISH EMPRESS, WINNER OF THE TWO ROYAL SHOW MEAT & WOOL CUPS.**

PRINCE'S SIRE IS THE WELL KNOWN LJB JADE WHO HAS WON SIX MEAT & WOOL CUPS INCLUDING THE 1981 ROYAL.

**'PRINCE' WILL BE OFFERED (LOT 3) AT THE NORTH ISLAND SIMMENTAL SALE AT PALMERSTON NORTH ON THE 18th JUNE.**

## H.R. LOWRY PUKEKOHU

**Box 2369 Stortford Lodge**

## HASTINGS

**Phone 86-236**

# SPRINGBROOK SIMMENTALS

*THE SMALL HERD WITH BIG RESULTS*

WINNER OF FIVE CHAMPIONSHIPS IN THE 1984  
SHOW SEASON

## PRESENTS FOR SALE **'SPRINGBROOK SIR LANCELOT'**



LOT No. 2 SOUTH ISLAND SIMMENTAL SALE  
**CHRISTCHURCH, THURSDAY 6th JUNE**

*ENQUIRIES & INSPECTION WELCOME*

COLIN J. PATTERSON, LAKESIDE No. 3 R.D. CHRISTCHURCH  
PHONE LEESTON 706

# Club News

## METHVEN SHOW (Canterbury)

This country show is also used as the first section of the Canterbury A. & P. Association Hoof and Hooks competition. Steers for the contest are assembled in Methven for 'on the hoof' judging before going through to one of the Canterbury Freezing Works. There are also small All Breeds Beef Classes and for the first time for a number of years a few Simmentals took part. A.A. (Tony) Partridge of Ladbroke took cattle through and his wife took a second with a 2 year heifer, he won the best beef bull and the cow and calf competition.

In the Steer competition Brian Barclay got second place on the hoof in the 300 kg and over section. The following week the hooks competition took place and in the 220-300 kg class P. L. McCaw was 3rd with Simmental cross and B. R. Barclay was 2nd, C. J. Patterson 3rd in the over 300 kg class.

In total 10 Simmental cross steers were entered out of the entry of 52 steers. Brian Barclay also competed successfully last year — keep it up.



*Brian Barclay with his winning carcass.*

## CANTERBURY HOLDS FIELD DAY

In April the Canterbury Club held a field trip in the Banks Peninsula area which was attended by over forty members and friends. As well as farm visits the day included a visit to the Okains Bay Museum in one of the outlying Bays on the Peninsula which is probably unique in the country. Set up by the Thacker family who have lived and farmed in the area since the very early days it contains an outstanding collection of Maori artifacts as well as countless items dating back to the original European settlement of the area. Murray Thacker who is in his fifties has dedicated himself to promotion of this project which is now gaining national recognition. The Club was made most welcome and held a picnic lunch in the grounds of the museum.



*Gavin Marshall of Duvauchelle whose property was visited on the field day.*

Visits were made to three breeders including Gavin and Judy Marshall who farm some pretty precipitous country. People who might enquire how Simmentals cope with steep hill country should pay them a visit! They thrive and these people are producing some strong young stock.

Ted Turrell's well known 'Canterbury' Stud was also visited and seen under very tough drought conditions. A large group of commercial cattle were seen as well as his Stud herd.



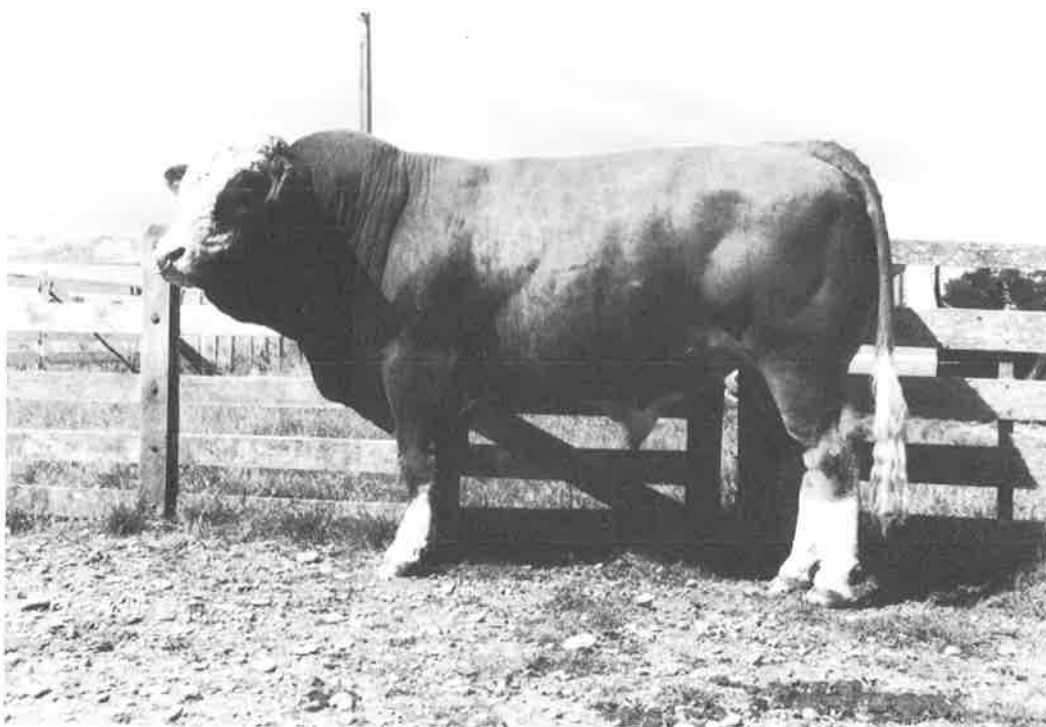
*Ted Turrell's commercial herd under severe drought conditions.*

The Club then visited David and Melinda Carter's property at Teddington in the Lyttelton Harbour basin. The Carters after a number of moves have at last got themselves permanently established and as a consequence their herd is now consolidating and some excellent cattle were seen. This visit was marred somewhat by torrential rain in the latter stages which successfully soaked the visitors and just as quickly stopped once shelter was reached. The day wound up with an Annual Meeting and meal at the local hotel.

Next autumn the Club plans to set up a workshop field day along similar lines to that recently held at Arohena.

# WAIMIRO SIMMENTALS

**(A.B. PERRY)  
HERD 294**



## **HERD SIRE 'EASTDOME NORTON' BY 'BALIG AGENT'**

**(Born 13.9.82)**

**Purchased at South Island Sale 1984**

'WAIMIRO' WILL PUT FORWARD AT THIS YEARS NORTH ISLAND SALE AT PALMERSTON NORTH (18th JUNE) FOUR RISING TWO YEAR OLD BULLS AND ONE THREE YEAR OLD IN-CALF HEIFER. SIRES OF THESE ENTRIES ARE 'WAIMIRO MOSES' A POLLED BULL BY ARGOS, EXTRA (CSA) THE WELL KNOWN CANADIAN SIRE AND CORHAN POLONIUS AN AUSTRALIAN POLLED SIRE.

*Enquiries and Inspection Welcome.*

Contact Alan Perry

Phone: Rongotea (063 248) 772

or write to: Penny Road 9 R.D. Palmerston North



# Miscellaneous

## COUNCIL ELECTIONS

This year three of our Councillors completed their three year term on Council. N. J. Barnett completed his second term (six years) as did J. D. Graham and A. B. Perry his first term. All made themselves available for a further term and were re-elected unopposed.

The structure of the Council has in recent years seen some changes with the last of our original foundation Councillors retiring but these have been successfully replaced on each occasion and it gives continuing strength and stability to our organisation when candidates such as those re-elected this year continue their service. We wish them well over the next three years.

## A MATTER OF SCALE

We talk about our 'big' back country properties. Recently I was lent a book on Pastoral Areas of Australia and there is no wonder some of our Trans-Tasman associates 'talk big'! Victoria Downs in the Northern Territory, one of a number of properties described is 12,000 square kilometres, (just under three million acres) has boundaries a hundred kilometres apart, twenty four sets of cattle yards, sixteen airstrips, four helicopters and five light aircraft and eight or nine pilots. The property has a staff of sixty five including a full time trained nurse, its own post office and shop, which has a turnover of \$350,000 per annum.

Stock on the property is recorded at 90,000 cattle mostly Shorthorn/Brahman cross. 15,000 'fats' go off the property each year. As a stock truck they have a Mack R700 which its double deck trailer is 160 feet long.

Victoria Downs is now a shadow of its former self. At one time it was nine and one quarter million acres and ran 170,000 cattle — the biggest property in the British Empire. It is currently owned by L.J. Hooker and Company one of the biggest landowners in Australia.

Imagine buying the replacement bulls for the season!

## SOME PEOPLE!

The 'grapevine' works well in this job:

A recent field day was scheduled for the central North Island on 28th February. A couple of enthusiasts turned up a week early — from Dargaville!! (over 200 miles)

A couple of bull buyers came to the South Island Sale last year with cheque books at the ready — the day after the Sale!

A husband and wife recently came to town for the day and he went to the dentist while she went shopping. Having completed her errands she drove home and couldn't understand why husband was so late out on the farm!



*An excellent herd belonging to Stan and Gay Timperley of Morewa, Northland.*



*A stylish young bull on Ron Wallace-Wells property at Tirau in the Waikato.*



*Ron Wallace-Wells (left), Geoff Mathis (near neighbour), Neil Oliver and Jim Houlbrooke on Ron's property in April.*

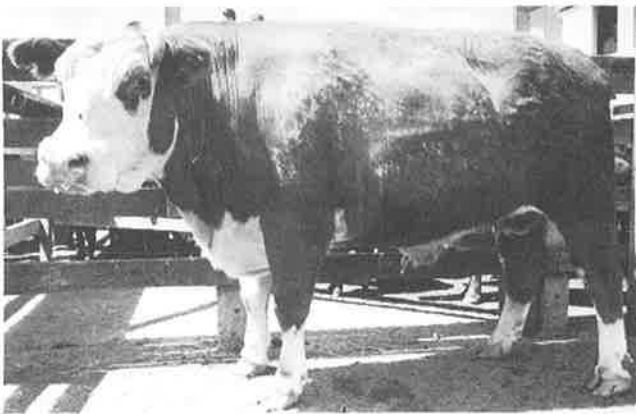
# Miscellaneous

## SIMMENTAL CHARITY STEER

Huntermville in the northern Manawatu had a problem - the maternity annexe of their small hospital was threatened with closure. Mr Tom Taylor of Huntermville put forward a Simmental cross steer of princely proportions for auction. The animal was sold at Feilding for a 'market topper' of \$1,840! The auctioneers, Wrightson NMA donated their commission. This was matched immediately by the vendor producing a further \$200. The animal was then put forward for a weight guessing competition, more revenue.

The bullock weighed 1,075 kg.

Nice to know there are still some big hearted people about.



*The recent 'price-hike' in fuel has resulted in a return to some of the traditional methods of farm transport — still requiring a kick start!*

## TATTOO YEAR LETTERS...

1984 — R

1985 — T

1986 — U

## EAST DOME STUD

(Herd No. 901)



EAST DOME WILL OFFER **LOT 1 & LOT 34** AT THE SOUTH ISLAND SALE, 6th JUNE

A selection of young stock available this season. Inquiries and Inspection Welcome

**W.A. ROUSE, EAST DOME, FIVE RIVERS, R.D. 3, LUMSDEN**  
**PHONE LUMSDEN 86R.**

# RISSINGTON SIMMENTALS

BULL SALE: WED. 19th JUNE AT 2.30PM ON THE PROPERTY

## 80 TOP PERFORMANCE TESTED BULLS

*(THESE BULLS ARE GRASS FED. FORTY ARE PUREBREDS)*



A GROUP OF THE SALE BULLS BY LJB JADE, S. P. DUKE, RISSINGTON MONITOR, HEYWOOD ESQUIRE, RISSINGTON MICHAEL, ZARZOU & TAS SAMBO.

**REMEMBER:** BY PURCHASING A TOP PERFORMANCE TESTED BULL YOU TAKE MOST OF THE GAMBLE OUT OF IMPROVING THE PRODUCTION IN YOUR HERD IN WHATEVER TRAIT YOU SO DESIRE.

- ★ BEEFPLAN RECORDS PRINTED IN CATALOGUES
- ★ FREE TRANSPORT OF BULLS TO YOUR NEAREST N.I. SALEYARD
- ★ AFTER SALES BACK-UP SERVICE WITH ALL PURCHASES

INSPECTION OF SALE BULLS WELCOMED AT ANY TIME. CATALOGUES WILL BE AVAILABLE ON REQUEST FROM YOUR AGENTS OR BY CONTACTING THE VENDORS.

**JOHN AND STAR ABSOLOM**  
R.D.4 NAPIER, PHONE: RISSINGTON 836



# THE LEVELS



HERD No. 3



WROXALL PRIDE AND 8 weeks old son, LEVELS RISSINGTON (by RISSINGTON MAJOR)  
and RISSINGTON MAJOR. — Country Life photo

## WROXALL PRIDE:

- ★ Champion Female Invercargill Royal show, 1984
- ★ Champion Female Timaru A & P Show, 1984

## RISSINGTON MAJOR:

- ★ Supreme Champion Timaru A & P Show, 1984
- ★ Supreme Champion Christchurch A & P Show, 1984
- ★ Supreme Champion Invercargill Royal Show, 1984
- ★ All Breeds Champion Timaru A & P Show, 1984
- ★ All Breeds Champion Invercargill Royal show, 1984

---

**Watch for LEVELS BULLS at Christchurch Sale  
on June 6, 1985**

---

**ENQUIRIES AND INSPECTION WELCOMED**

**RODNEY COX — THE LEVELS — No 4 R.D. TIMARU  
— PHONE Timaru 82-418**

**OR YOUR LOCAL AGENTS**