

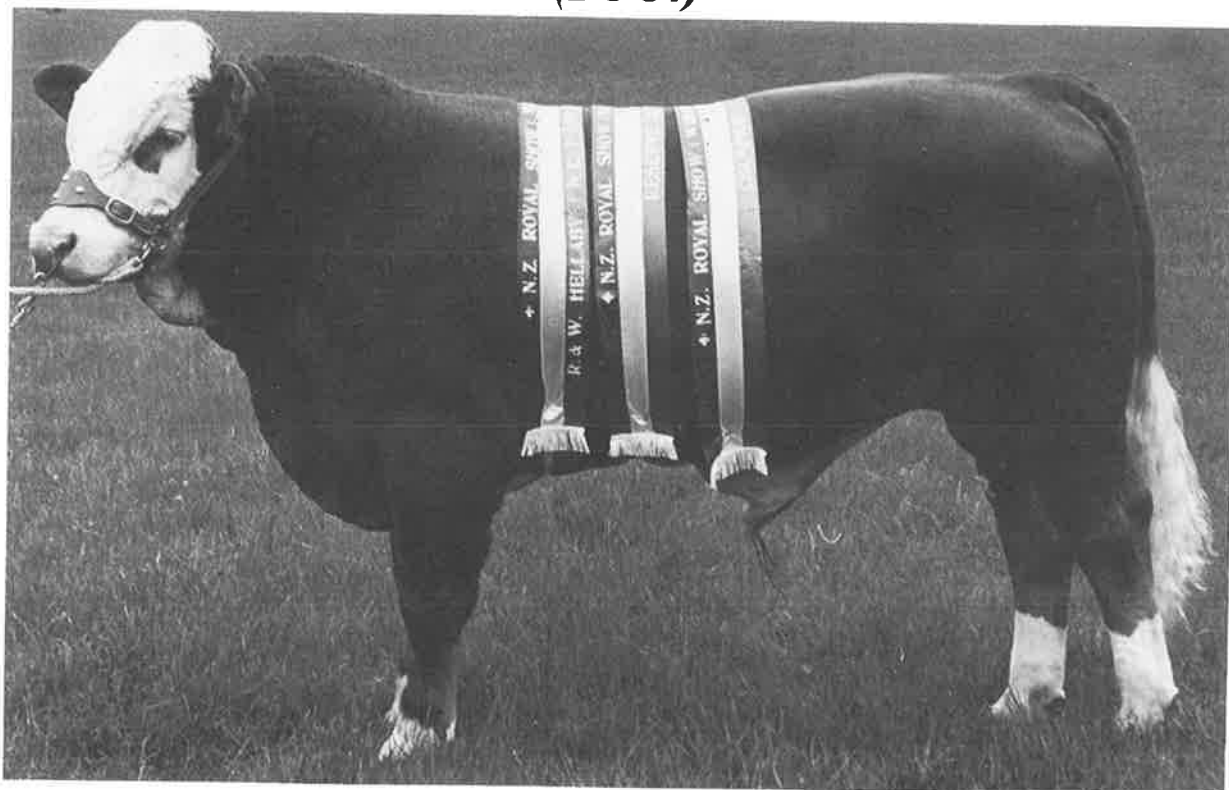
new zealand simmental



summer issue · december 1985 · number twenty four

RISINGHOLME 'ROYAL'

(1-8-84)



CHAMPION YEARLING BULL — 1985 ROYAL SHOW.
RESERVE GRAND CHAMPION BULL — 1985 ROYAL SHOW
ALL BREEDS RESERVE CHAMPION YEARLING BULL
1985 ROYAL SHOW — FORTY SIX ENTRIES

CHAMPION YEARLING BULL — 1985 CANTERBURY SHOW
ALL BREEDS RESERVE CHAMPION YEARLING BULL
— 1985 CANTERBURY SHOW
RISINGHOLME ALSO EXHIBITED THE SUPREME CHAMPION
SIMMENTAL AT CANTERBURY

'RISINGHOLME ROYAL':

400 DAY WEIGHT 605 KGS. FRAME SCORE, 7 PLUS.
SIRE: BIG-N-TALL, DAM: BY EXTRA (CSA), HEROD G/SIRE

'ROYAL':

WILL BE OFFERED AT THE (JUNE) 1986 SOUTH ISLAND SALE.
A SELECTION OF HEIFERS WHICH ARE IN-CALF TO HIM WILL ALSO
BE OFFERED.

ENQUIRIES AND INSPECTION WELCOME

Stan Crosson

'RISINGHOLME'

No 2 R.D. Timaru
Phone: St Andrews 368

THE SIMMENTAL CATTLE BREEDERS' SOCIETY OF NEW ZEALAND (INC.)

118 VICTORIA STREET, CHRISTCHURCH 1, NEW ZEALAND.

P.O. BOX 25·100, VICTORIA STREET, CHRISTCHURCH. Phone 793·166

Contents

Editorial	3
People	4, 5
Sales	6, 7
Technical.	9, 11
Shows	16, 17, 18, 19
Royal Show	14, 15
Simbeef	22
Miscellaneous	10, 21

Advertisers

Risingholme Simmentals—D. S. Crosson
Waimiro Simmentals — A. Perry
Guthrey Breeding Services
Avon Park Simmentals —
D. & M. Carter
Borthwicks
Dalstud Embro Transplants —
G. Sargent
Ohu Simmentals — G. Pearce
Silvermoyle Stud— W. & G. Eccles
Rissington Simmentals —
J. & S. Absolom
The Levels — R. Cox

Office Staff

Ian S. Johnstone
(Secretary/Manager)
Phone: Christchurch
(Bus.) 793-166
(Pvt.) 487-572
Mrs Ann Boyce
(Secretary)

Mrs Yvonne Kingsland
Mrs J. Smith (Part time)

EDITORIAL

The Council, as the elected administration body of the Society has the responsibility of directing and implementing the policies and procedures upon which the success of the breed and its membership is based.

The functions of a successful Council are many and diversified but they are, and must be, democratic — in the interests of the overall membership.

Over the past few months there has been a wide and continuing discussion on cattle standards and inspections sparked by a decision of Council to uplift the standard of animals at our Sales. The implementation of this decision was made in the long term interest of the breed and the members.

If it has done nothing else it has drawn to the attention of breeders the necessity of establishing and maintaining standards. The discussions that have followed can only re-inforce what was intended.

COUNCIL MEMBERS

President:	H. R. Lowry, Pukekohu, P.O. Box 2369 Stortford Lodge Hastings. Phone: (070) 86236
Vice President:	A. B. Perry, Penny Road R.D. 9, Palmerston North Phone: Rongotea (063) 248-772
Councillors:	J. P. Absolom, Rissington R.D. 4, Napier Phone: Rissington (070) 295-836 N. J. Barnett, Arohena, No.7 R.D., Te Awamutu. Phone: Pukeatua (08) 224-820 D. C. Carter, Manor Farm, R.D. 1, Lyttelton. Phone: Christchurch (03) 299-731 J. D. Graham, Waingaro, R.D. Parnassus. Phone: Parnassus 809 J. R. Houlbrooke, South Road, R.D. 2 Waipu. Northland Phone: Waipu 15M W. A. Rouse, East Dome, Five Rivers, R.D. 3 Lumsden Phone: Lumsden (02) 287-621

CHAIRMAN OF COMMITTEES

FINANCE: H.R. Lowry TECHNICAL: N.J. Barnett,
PROMOTION: A.B. Perry SALES: J.D. Graham

ARGENTINIAN VISITORS

A chance call at the office on Sunday a couple of months ago I collected a phone call that resulted in an interesting meeting the following day. Three Argentinian farmers on a brief visit to New Zealand, who had lost track of time and days, phoned from Queenstown. One, Senor Rolf Hansclever, was one of the first breeders of Simmentals in that country and was past Vice-President of the Argentinian Association and one of their 3 Life Members. His travel companions were both farmers and breeders.

It was of great interest to meet and talk to these people about a country of which relatively little is known in this part of the world. Simmentals introduced in 1967 from Germany have made a strong impact in the cross breeding situation and are being used increasingly over British breeds and Indian cattle, which obviously have Brahman ancestry. The country is enormous and diverse in climate and farming type ranging from sub-tropical to extremely cold areas in the South. Economic extremes are on a parallel. The cattle population of some 70 million is spread over many types of country with greatly varying standards. The better pampas areas are where most of the Simmentals are based (and the better beef herds) and over 300,000 cross bred cattle are recorded. Suprisingly there are only about sixty purebred herds, but the Simmental is the main European breed exhibited at the main Palermo Cattle Show and as happens here the ability of the crossbred to produce lean carcasses and growth is promoting the breed above others.

The Argentine has much the same problems as other large meat producing countries in exports and marketing and their economic situation is variable. Despite this their Simmentals are continuing to expand.

Time, unfortunately did not allow for a visit to a local Simmental herd but a brief tour of the city and the surrounding hills gave them some idea of our life style.

There visit was not connected with the World Congress in November, 1986 but they assured me that any New Zealander visiting Argentina would be assured of a warm welcome. They left for Australia that afternoon on their way back to Buenos Aires.



L—R. Rolf Hasenclever, Herman Feldkamp and Georg Oppen. Visitors from the Argentine.



WHAT IS HIS BACKGROUND??

Someone was in the office recently and we were talking cattle and farming in general and I was asked "What is your background"? It occurred to me afterwards that perhaps more than a few do not know much about me other than the fact I am the Secretary/Manager and have been about for some time — twelve years in fact.

Going back a little over half a century I arrived on the scene the son of a (third generation) high country farmer. The youngest of a family of three. I grew up in the 'sticks' — no phone no electricity. I can just remember the first radio. The nearest shop was forty miles away, the nearest town seventy odd. My initial education was by correspondence. Mail once a week if you were very lucky. At the age of ten I was 'prized out' of my much cherished isolation and sent to boarding school, a fairly traumatic experience.

On leaving school I reverted to the high country — rouse about, shepherd, musterer, drover, truck driver, deer culler, head shepherd. Then a brief spell with a stock firm, but went 'bush' again and eventually graduated to Station Manager. In my late twenties I married, changed stream altogether, due to lack of prospects, and joined an Oil Company where I remained for seventeen years in various marketing roles but always connected with the rural industry — I have never really got away from it.

My arrival on the Simmental scene was more by chance than good management. I was isolated in the back country by a flash flood for over a week, missed the position advertised in the local Press, still had the cheek to apply and luck shone upon me, I was appointed.

People

OUR STAFF

With a considerable number of new members in our organisation we think it timely to 'put a face' behind the pen or telephone that links you with the office.

Many offices are remote and no more than a 'paper sifter' to those who do not have direct contact. It is our constant endeavour never to let such a situation develop and I feel that those who work for us and with us do an outstanding job in this direction . . .



Ann Boyce — My personal Secretary for the past four years, Ann has been with us for eleven years. Starting as a part time employee she has a wealth of experience in every facet of our operations. Her main task is co-ordination of what we do in the office, when and how it is handled.

Ann is married and she and her husband Warren have a collective group of six children.



Yvonne Kingsland — Yvonne is our other full time staff member who also has a great deal of experience, having been on the staff for almost ten years. She worked part time before taking up full time hours as Ann's assistant. As well as being our main typist

she does the majority of the computer work and also shares the book-keeping. Yvonne is also married with four children.

In a small office such as we have job boundaries are not specific and both Ann and Yvonne share jobs and interchange regularly. This gives flexibility and the ability to take over any job at any stage should the other not be available.



Jeanette Smith — Our 'newest' staff member Jeanette comes in to help us in the busy season. She has rapidly developed knowledge of what we do and has been invaluable in assisting with transfers and sorting up 'after Sales' documentation. She also types, when required, does many routine jobs such as banking and membership. With the greatly increased work load we have had in the last two seasons she has been a welcome addition to our staff.

In the 'off season' Jeanette returns home to look after her husband and family of three.

AUTHENTICATION

Staff get really involved in their job. One of our people proffered a cheque for payment of an article on a recent shopping expedition. Knowing the system of identification with cheques she quickly said I can give you a 'A.I.' if you require it!

1986 WORLD CONGRESS — ARGENTINA

We already have quite a number of enquiries for this event and have established contact with the Argentine Association who are providing us with details of the planned organisation. Any member or person interested who would like information on the Congress should contact the office and we will put them on the mailing list for progressive information as it comes to hand. This Congress promises to be one of great interest, presenting an opportunity to see a country not normally included on the 'tourist track'. Dalgety Crown Travel are co-ordinating the tour arrangements and have already come up with an excellent interim itinerary.

Sales

1985 SALES SERIES

We have sold more bulls this season at auction than ever before. Paddock sales have also been buoyant. prices have been well in line with market and reflective of weaner markets and fat stock prices for our crossbred cattle — as with them, our pedigree and commercial bull sales have reaped a premium and our top range produced some very good prices.

This past season we have seen a number of new district auction Sales — some private and others multi-vendor. Generally these too have been well up to average and vendors have been well satisfied.

It is clear that when the rapid expansion and demand for our cattle happens as it has in the past two seasons, we must not lose sight of the factor of quality. We have had a few 'humps and bumps' in standards and presentation and this has already been spelt out fairly strongly.

Our coming 1986 season may not be as easy, prices could well come back in line with the hammering our rural industry is getting, but we must be realistic and still maintain our standards if we are to uphold the favourable position we have had in the past two seasons. Bear in mind it is going to be the same for producers of other breeds of cattle and they too will be trying hard.

To tabulate a complete report of all Sales at this stage would be of historical interest only — they were almost six months ago. A 'resume' of the highlights is as follows:



David Elliot of Waimate receiving the Pacific Freezing Company Export Trophy from Tony Plummer, a Simmental breeder and also a Director of Pacific.

South Island, Christchurch 6th June, 1985.

40 bulls, average \$4,043

Top price, \$12,500 C.J. Patterson to M. Coombs, Manawatu

Other top prices, \$11,000 D. & M. Carter to G. Paisley, Balclutha.

\$10,000 R.W. Gibson to L. Hay, Tapanui.

\$8,000 J.R. & S. Sutton to R. Caird, Timaru.

One heifer, \$7,000 D. & M. Carter to W.T. McCorkindale, Lawrence.

simbeef

symbol of progress



Colin Patterson with the purchasers of his top priced bull Mr & Mrs Michael Coombs from the Manawatu. With them is Trevor Melville of Dalgety Stud Stock.

Palmerston North, 18th June, 1985.

27 Bulls, average \$5,003

Top price \$17,000 H.R. Lowry to L. McLachlan, Outram.

Other top prices \$9,000, N.J. Barnett to J. Russell, Ohingaiti.

Several others realised between \$5,000 and \$6,000.



Robin and Gill Lowry with their record priced bull sold to Lachie McLachlan of the Limesprings Partnership near Dunedin. With them is Roger Keash of Reid Farmers, Balclutha.

Timaru 11th June, 1985 (Run Bulls).

20 bulls, average \$2,100.

Top \$5,000, vendor D.M. Elliot.

Omakau 12th June, 1985 (Run Bulls).

17 Bulls, average \$2,252.

Top \$3,900.

Castlerock (Mossburn) 20th June, 1985 (Pedigree and Commercial).

36 bulls, average \$2,425.

Top \$6,900 vendor W.A. Rouse.

TATTOO YEAR LETTERS...

1985 — T

1986 — U

Sales



Part of Michael Coomb's group of bulls which sold strongly at his first commercial Sale.

SALESMANSHIP — THE FOLLOW UP

In most cases where a breeder makes a sale from his paddock he meets the client and knows his intentions in regard to what he is going to do with his purchase — e.g.: whether it is a bull for commercial cross breeding or for pedigree with transfer.

There are however some sales made to people, or through stock firms, where the client is not known. In particular, what we refer to is the female buyer. With the great upsurge in interest in the Simmental breed there has been a lot of trade in females and as a consequence a lot of newly established members. On occasions these purchasers appear, buy their animals (registered stock) and go on their way and it is often months before we learn of the sale or have an approach from them. In a lot of cases these people are quite unaware what to do or how to go about getting their cattle established in a registered herd.

What we are driving at is to ensure that when you make a sale, particularly of registered females, you advise the Office so that a follow-up can be made to establish if the purchaser would like to join as a member — we have all the necessary information.

It is a simple task to ask the purchaser or his agent at the time the sale is made. It promotes you as a breeder and the breed and in most cases stimulates the interest of the purchaser.

A little 'salesmanship' with your selling is an ongoing thing.

M. Coombs (Ohingaiti, Manawatu) 17th June, 1985 (Run Bulls)

18 bulls, average \$3,244.

Top \$5,100. This was Ailsa Farm's first Auction Sale.

J.P. & S. Absolom, Rissington 19th June, 1985 (Run Bulls with a few Pedigree)

78 bulls, average \$3,675.

Top \$12,000 (stud) to A. Plummer.

This was in the 3rd annual Rissington Sale.

J.R. Houlbrooke, Waipu, Northland 25th June, 1985 (Private Auction)

24 bulls, average \$3,933

Top \$11,800 (This bull was bought by a commercial breeder)

10 females, average \$2,265 (mixed ages)

5th Waikato Club Sale, Hamilton 4th July, 1985.

38 bulls, averaged \$3,546.

6 females, averaged \$2,450.

Top priced bull \$9,000 J.B. Scott to T. Sloane.

Other top sales \$8,750 W. Eccles to W.A. Rouse.

\$7,000 B.B. Anderson to J.L.

McNaughten.

Top priced female \$3,100 J. Middleton to R. Cameron.

S. & G. Timperley of Morewa and T. & L. Sloane of Mata also had 'on farm' Sales for the first time this year in the Northland area. We have insufficient information to accurately report the Sales but understand they were successful and 'on par' with the average prices.

TRANSFERS — COWS WITH CALVES AT FOOT

A small point on transfers appears to want some clarification. Where cows are sold with calf at foot it is a Regulation that the calf must be registered by the breeder before sale.

An unregistered animal cannot be sold and registered by the new owner unless there is a written contractual arrangement. Refer Regulation 2 (b) and also Regulation 15.

simbeef
symbol of progress

NATIONAL FIELDAYS (MYSTERY CREEK)

The Waikato Club undertook a strong promotion at the Fieldays in June. A group of Club members set up a co-operative display promoting their cattle and the breed in a most effective display. A report from the Club advises that there was good interest from commercial breeders. In their promotion the Waikato District Sale and the North Island Simmental Sale were both promoted.

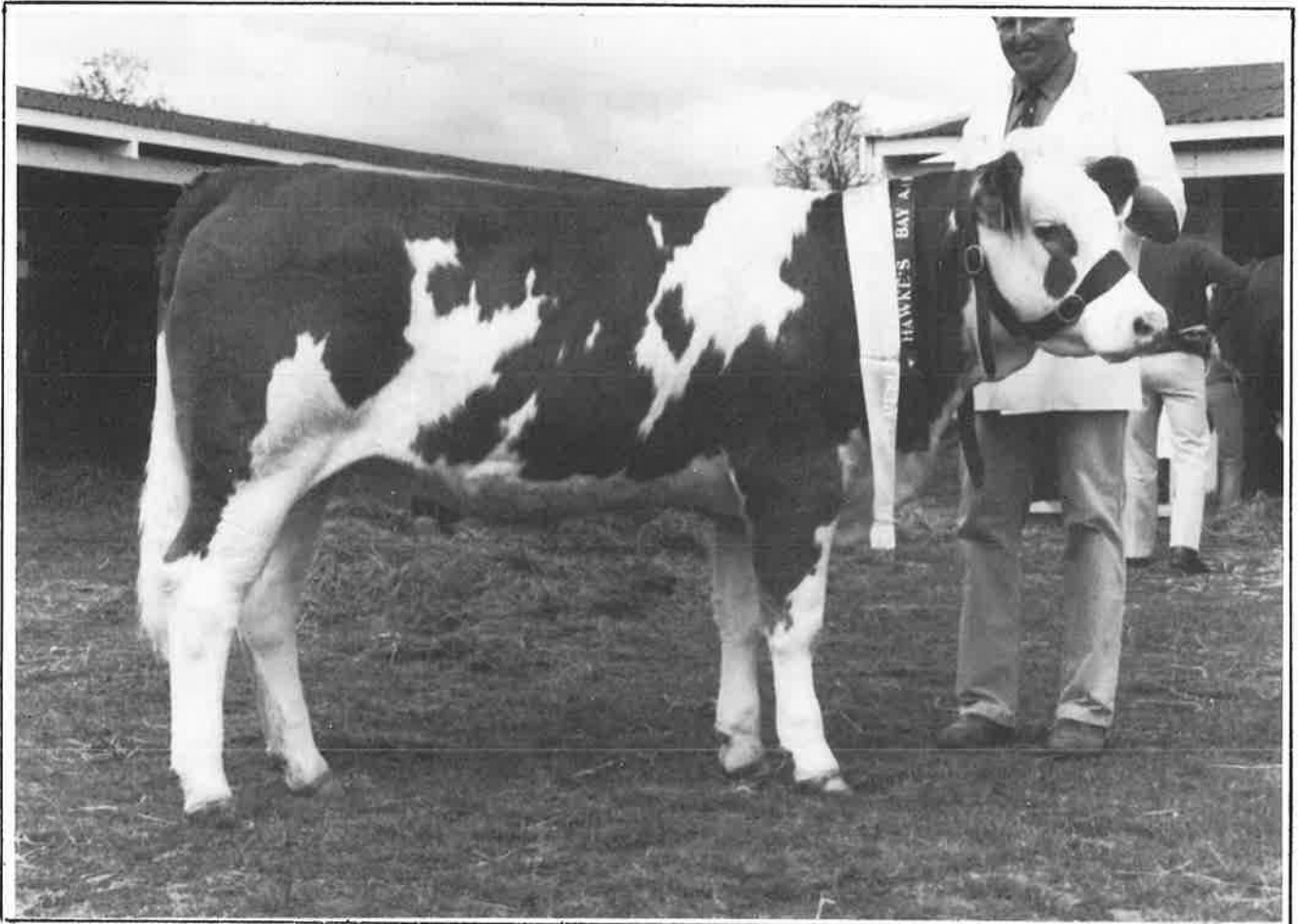
This is probably the first time a display has been set up at such an event on a co-operative basis with shared costs — it is an interesting and progressive concept.



Club members, Darcy Goodrick, Gilbert Pearce and John Arbon outside the display marquee.

WAIMIRO SIMMENTALS

**(A.B. PERRY)
HERD 294**



WAIMIRO RAY, 294/AR87E

**CHAMPION YEARLING SIMMENTAL HEIFER AT GISBORNE,
HASTINGS AND PALMERSTON NORTH.
ALSO CHAMPION YEARLING OF ALL BREEDS AT PALMERSTON
NORTH.**

**THIS HEIFER IS BUT ONE OF THE RESULTS OF THE EXTENSIVE OVUM
TRANSPLANTING PROGRAMME BEING UNDERTAKEN
AT THE WAIMIRO STUD.**

Enquiries and Inspection Welcome.

Contact Alan Perry

Phone: Rongotea (063 248) 772

or write to: Penny Road 9 R.D. Palmerston North

Technical

SOUTH ISLAND SIMMENTAL TECHNICAL FIELD DAY

THURSDAY 20th MARCH 1986
CANTERBURY A & P SHOWGROUNDS SELLING CENTRE

PROGRAMME WILL INCLUDE

TATTOOING & DEHORNING TECHNIQUES
RECORDING & IDENTIFICATION PROCEDURES
SLIDES & DISCUSSION ON CARCASE EVALUATION
INSPECTION STANDARDS, FEET, LEGS ETC..
WEIGHING — USE OF COMPUTERISED SCALES
PERFORMANCE RECORDING — HOW TO USE IT
COMPUTER DEMONSTRATION
SALE & SHOW PREPARATION
VETERINARY TOPICS
GENERAL DISCUSSION

ALL COUNCILLORS WILL BE PRESENT. AN ADDRESS WILL BE GIVEN BY DR. EARL PETERSON, EXECUTIVE ADMINISTRATOR OF THE AMERICAN SIMMENTAL ASSOCIATION.

FURTHER DETAILS WILL BE CIRCULATED CLOSER TO THE FIELD DAY

TECHNICAL FIELD DAY TO BE HELD IN CANTERBURY

A field day based on the format of the one held at Arohena early this year will be held at Christchurch next March. This will cover various aspects of our systems with practical sessions relative to cattle handling, tattooing, de-horning, weighing and recording etc. it is set up for the benefit of members and an opportunity for collective discussion. Coinciding with this event a Council Meeting will be held which will allow attendance by all our Councillors.

Plans are already well underway and the venue, the Showgrounds Selling Centre (where we hold our south Island Sale) has been booked for the 20th of March. We expect a large attendance at this Technical Day and are hopeful that members from outlying Provinces will organise group attendance.

Dr. Earl Peterson, who is the administrative manager of the American Simmental Association will be in New Zealand at this time and will give an address. He is well known in the American cattle industry and is recognized as a top business administrator with wide experience in computer recording and livestock systems. He is responsible for the running of the American Association which employs a staff of over forty people. Earl was in New Zealand briefly last year with the Pre-congress Tour and will already be known to some of you.

Full details of this Field Day will be circulated once plans are finalised.

COMMERCIAL FIELD DAYS. A NEW FORMAT

Over the past season several successful field days have been held that have had a somewhat different

approach to those historically set up. The objective has been to present to the commercial breeder the attributes that the Simmental breed has in cross breeding.

The 'pilot' field day in this format was set up by a group of Northland breeders in May in the far North-West of the area at Broadwood. This area was selected as being one where a lot of beef cattle were run but relatively few Simmentals were present. Cattle were carefully selected to demonstrate varieties of cross and breed examples and trucked to the local saleyards for exhibition and discussion. The area was canvassed in a carefully planned and executed manner to invite and attract as many of the local commercial breeders as possible. The day was staged specifically for them rather than our own members.

The activities were split into two sections with the first being illustrated by showing of our beef carcass evaluation slides followed by guest speakers from the M.A.F. on performance recording, cross breeding and general cattle husbandry. The content of this session was relevant to all cattle breeders.

In the second section the bias was more specifically Simmental and our own breeders put themselves before the gallery to discuss their cattle and answer questions.

The field day was very well received by those who attended and the atmosphere was friendly and positive.

As a measure of success the fact that some sixteen Simmental bulls have since gone into the area speaks for itself.

The Council are greatly in favour of this type of project and will provide some sponsorship in meeting costs. All clubs have recently been written to, to promote the concept.

It is a positive way of promotion of the breed but if undertaken must be carefully and precisely planned with only top stock being used for demonstration.

simbeef
symbol of progress

Miscellaneous



Guthreys

A NEW BLOODLINE FOR THE SIMMENTAL BREEDER

STUARTSLAW JOSEPH

SIRE: GLENTURK GRENADIER

DAM: AELPLERIN

HE IS OF PURE SWISS BLOODLINES

PERFORMANCE TESTED:

He weighed 628 kgs at 400 days

His wither height at 365 days was 133 cm

FOR EASY CALVING, LONG CLEAN AND WELL-FLESHED CATTLE

TRY THIS NEW SIRE — PRICE \$50.00 per dose.

FOR THIS AND OTHER SIMMENTAL SEMEN REQUIREMENTS CONTACT:



Guthrey Breeding Services

MAIN ROAD P.O. BOX 97, KAIAPOI, N.Z.

PHONE KAIAPOI (0327)6175
TELEX NZ 4243

P.O. BOX 1339 HAMILTON
PHONE (071)80190

A Division of Guthrey Holdings Ltd

CATTLE SCALES FOR SALE

TIKI BRAND — CLOCK TYPE
REASONABLE OFFER ACCEPTED

J. C. HALL PHONE 873 HORORATA

OBITUARY

We are sorry to record the passing of one of our earliest members in the Northland area, Geoff Palmer. His herd was established in October, 1972 being No. 87 in the membership register. Geoff farmed a small block east of Whangarei at Parua Bay which he had developed and on which he had built his own house. While having only a comparatively small herd he dedicated a great deal of his spare time to the interests of the breed and its promotion in the Northland area and served as Club President until shortly before his death in June. A person who had great energy Geoff spent his life associated with the timber industry and since we have known him, with N.Z. Forest Products.

In the latter part of his life he had considerable ill-health but this did not deter him from maintaining his two great interests, rifle shooting (he represented New Zealand at Bisley in England) and Simmentals. It was perhaps fitting that Geoff collapsed while out on his property with his cattle.



Guthreys

A.I. TRAINING COURSES

Designed to train farmers to inseminate their own cows.

Courses held at Christchurch during Autumn/Winter 1986

Write for further information to:

GUTHREY BREEDING SERVICES.

**P.O. Box 97, Kaiapoi or
PHONE KAIAPOI 6175**

Please send information to:

Name: _____

Address: _____

"A CALL FOR A MORATORIUM?"

A contributed article by —
Peter Packard, MAF Auckland

The upsurge in interest throughout New Zealand in crossbreeding and in particular the Simmental breed must be heartening for your breeders and for the Society as a whole.

It is interesting to note that over recent years there has also been an upsurge in the total numbers of Simmental cattle being performance recorded in New Zealand — 2195 animals (5.7% of the total) in 1974 compared to 3120 animals (13.2% of the total performance recorded animals) in 1985. This represented an increase of 42% — the highest percentage lift of any Breed Society in New Zealand.

This is no reason for anyone to become complacent however — like a good athlete who has worked hard to get to the top he then has to work *even harder* to stay there!

I would be the first to agree that the Simmental breed has a *real* place in our New Zealand beef scene offering qualities like "mothering and milking ability" which have been long overlooked by many of the breeders of traditional beef breeds. With the post-drought re-stocking which has occurred in many parts, the swing into crossbred cattle using simmental bulls was inevitable.

While this is occurring it would not be hard for Simmental breeders to relax and let this fashionable trend allowed to follow its own course, without much breeder effort.

The course set must surely be well thought out — it must pave the way for long-term improvement — it will contain many challenges — it will contain some disappointments but many satisfying rewards — it will mean hard work but in the long-term it will also mean financial reward for the breeder and his client.

The course I refer to is "within breed improvement" and the blueprint on which such a course is planned and implemented just *has to be* "performance recording".

My belief is that for too long the New Zealand industry has "bumbled along" with breeders producing the sires of tomorrow still selecting on "subjective" criteria — certainly criteria which fail miserably in putting dollars into the pockets of their bull buying clients! And even some of their "objective" methods of selection must be questioned. Take for example the frame score technique of measuring bulls — hip height measurement of 55 inches and a frame score of 6 — how much relevance does that have to a commercial beef breeder keen to make his breeding herd more efficient and profitable?

Within all breeds of cattle in New Zealand, the time has come for a moratorium — a time for self-appraisal — when the breeders of bulls of tomorrow must critically look at "the service" they are providing to the beef industry. The moratorium must centre on the importance of production records and the use of these records for "within-herd", — "within breed" — national beef improvement.

For Simmental breeders who are getting their pedigree records processed through Beefplan but who are *not* performance recording — my message is simple! *You should be . . .* you are already providing all the important pedigree details (which is about 75% of the information required for performance recording) and all we require is the approximate birth date, a weaning weight (or fate) and you are away!!

For that little bit of effort, Beefplan supplies you calving and sire summary details, and a cumulative weight record which ranks all weaners in your herd on production. A dam Lifetime Summary is also provided which lists and then ranks all cows in your herd based on their Breeding Value (maternal ability) — their ability to regularly calve and produce a heavier weaner. You will also be introduced to Beefplan's other Breeding Values (BVs) and Breeding Indexes (BIs). These are exciting technical advancements and go beyond what an animal looks like, or other qualities it might possess. Both BVs and BIs look at the qualities of that animal as "a breeding parent". In other words how will its progeny perform relative to the performance of other progeny in the herd.

Once you're into BVs and BIs and you use them effectively in a progressive breeding programme, you'll be starting "to cook with gas". If you are not performance recording you haven't even "turned the gas on" and in time will suffer the consequences of being unable to provide important information required in the market place. Make the change to "performance" now!

There are other changes too occurring in the beef industry which we must consider.

At last some attention is being given to the yield grading of beef carcasses and providing the important financial reward to those producers killing high yielding, lean carcasses. Perhaps it's not being recognised yet but the NZ Meat Producers Board is certainly aware of the "pressures" being applied from the farming sector.

The other is the "beef cow efficiency" job! There has been some bad publicity for Simmental cattle on the results and efficiency data coming out of Clay Centre in the USA. We all know how unrelated these results are to New Zealand conditions and how important it is for us to get research done which will "lay-to-rest" many of the myths floating around. We need efficiency of production — we need efficiency of production per head — we need efficiency of production per hectare. As economic pressures continue to squeeze the New Zealand farmer in all directions, our "seed stock" industry must ensure that it is producing production-orientated animals which will help meet the current and future economic and efficiency demands of their bull buying clients.

Perhaps more breeders should be weighing their breeding cows and relate the weight of weaner produced back to the liveweight of the cow say in mid winter. We know liveweight is a determinant of the annual dry matter requirements of an animal and knowing the weight of weaner produced we can easily calculate that cow's efficiency.

e.g. Cow liveweight	Weaner wt (kg)	Efficiency
550	250	0.45
500	235	0.47
450	230	0.51

These above figures indicate that the heavier cows (550 kg) in producing the heaviest weaners (250 kg) were still not as "efficient" as the lighter cows — and frankly I don't believe these heavier *will* always produce heavier weaners.

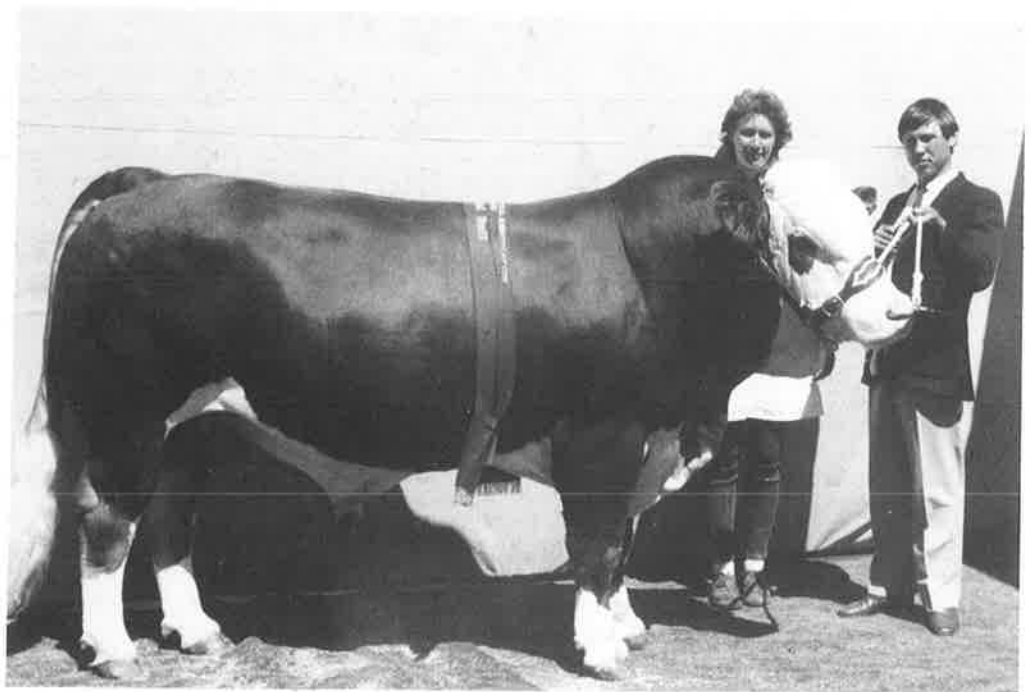
We won't know until we start weighing more cows and relate this to the weight of weaner produced.

In summary the beef industry is calling for "greater production — greater efficiency" and the basis for this is performance recording.

simbeef
symbol of progress

Avon Park Sh

GET ON TOP WITH



'AVON PARK PROUDFLESH'

PURCHASED BY J. N. GUTHREY FOR \$6000
PLACED SECOND IN MEAT & WOOL CUP AT THE CANTERBURY
SHOW 1985 TO THE ROYAL SHOW MEAT & WOOL CUP WINNER.

AVON PARK ALSO SOLD IN 1985

'AVON PARK AP 26' TO G. PAISLEY, BALCLUTHA, \$11,000
THIS BULL WAS SECOND IN THE MEAT & WOOL CUP AT
BALCLUTHA 1985 TO THE 1984 ROYAL SHOW WINNER.

'AVON PARK PILGRIM'
TO C. HUTCHING, DANNEVIRKE \$8,500

DAVID & MELINDA CARTER, MANOR FARM, No. 1 R

mentals



AN AVON PARK BULL



'AVON PARK POSY GIRL'

WINNER OF HER SECOND ALL BREEDS COMPETITION

WE ARE PLEASED TO SEE OUR CLIENTS HAVING SUCCESS.

D. & J. MATHESON WHO PURCHASED A

'SIR AVON PARK EXTRA' DAM FROM US WON THE
YEARLING ALL BREEDS HEIFER CLASS AT THE CANTERBURY
SHOW WITH HER PROGENY

AVON PARK HAVE ALSO SOLD FEMALES THIS SEASON TO:
THE MCCORKINDALE FAMILY (LAWRENCE), BILL & MARY CROFT
(AMBERLY), CHRIS CAIRNS (DUNTROON), LIMESPRINGS PTNSP.
(MILTON).

WE WISH THEM EVERY SUCCESS...

LYTTELTON. PHONE: CHRISTCHURCH (03) 299 731

Shows

1985 ROYAL SHOW (HAMILTON)

Entries at this year's Royal were not quite as large as previous years with twenty-nine entries but the standard of cattle was a credit to the breed and the exhibitors.

Senior Classes — entries were unfortunately a little sparse but in the Juniors, entries were excellent as was the competition. Mr J. D. Graham from North Canterbury who judged at this year's Royal, said that some of the Junior Classes presented some of the best cattle he had seen exhibited.

The Supreme Champion came from the well known Rissington Stud of the Absolom family, who presented 'Rissington Monitor' by SBL Polled 63K. An outstanding four year old of tremendous proportions 'Monitor' has already had success this year winning the Meat & Wool Cup at Gisborne and Hawkes Bay.

It was pleasing to welcome a number of new exhibitors at this year's Royal who had their first taste of the show-ring, the McNaughten family from Raglan, Alton Lodge Stud, the Hall family from Raglan, David Leaf from the Bay of Plenty and the Aukahas, all the way from Motiti Island.

The exhibitor who came furthest was our lone South Island representative, Stan Crosson, whose journey was well worthwhile with his Junior Champion Bull and Reserve Grand Champion. He also took second in the All Breeds Yearling Class.

The Meat & Wool Cup was strongly contested and was won this year (I think for the first time) by a very good two year Charolais bull belonging to Bruce Fisher of Greenpark, near Christchurch. Our Simmental entry 'Rissington Monitor' was a close second by only four points. Third place went to an Angus and fourth to a Hereford heifer.

In the large number of interbreed competitions which were very strong Simmentals were successful with a number of placings, the top being J. R. Houlbrooke who won the two year heifer class.

Individual Simmental Class results were as follows:

Heifer: 2 Years (4 entries)

- 1st J. R. Houlbrooke, Northland, 'Tokaweka Priceless'
- 2nd H. E. & J. Marshall, Tauranga, 'Emerald Dale Eileen'
- 3rd J. Arbon, Hamilton, 'Consi Opal'

Heifer: Senior Yearling (3 entries)

- 1st J. & D. Hall, Raglan, 'Wharton Hall Frosty'
- 2nd G. G. Pearce, Putaruru, 'Ohu Royal'
- 3rd J. & D. Hall, Raglan, 'Wharton Hall Maisie'

Heifer: Junior Yearling (7 entries)

- 1st N. & D. Barnett, Arohena, 'Coopental AR39'
- 2nd A. C. Rolley & G. C. Bowen, Hamilton, 'Blue Ridge Regal'
- 3rd L. & J. McNaughten, Raglan, 'Karew Greta'

Two Yearling Heifers: (3 entries)

- 1st J. & D. Hall
- 2nd N. & D. Barnett
- 3rd G. G. Pearce

Bull: 4 Years

- J. & S. Absolom, Rissington (H.B.) 'Rissington Monitor'

Bull: 3 Years

- G. G. Pearce, Putaruru, 'Rotomara Nelson'

Bull Senior Yearling: (2 entries)

- 1st G. G. Pearce, Putaruru, 'Ohu Reg'
- 2nd A. & S. Aukaha, Motiti Island, 'Double AA Rua'

Bull: Junior Yearling (12 entries)

- 1st D. S. Crosson, Canterbury, 'Rissingholme Royal'
- 2nd J. R. Houlbrooke, Northland 'Tokaweka Rascallion'
- 3rd H. E. & J. Marshall, Tauranga, 'Emerald Dale Samson'

Group: Bull and 3 Females

- G. G. Pearce

Sire Progeny Group:

- G. G. Pearce
- N. & D. Barnett

CHAMPIONSHIPS AND TROPHIES

- Grand Champion Bull
- Senior Champion Bull
- Supreme Champion Simmental
- Winner of the Society Silver Salva
- 'Rissington Monitor, J. & S. Absolom
- Reserve Grand Champion Bull:
- 'Risingholme Royal', D. S. Crosson
- Reserve Senior Champion Bull
- 'Rotomara Nelson', G. G. Pearce
- Junior Champion Bull and Winner of Society Silver Trophy.

- 'Risingholme Royal', D. S. Crosson

Reserve Junior Champion Bull

- 'Ohu Reg', G. G. Pearce.

Grand Champion Female:

Senior Champion Female:

- Winner of R. H. Kerr Salva.

- 'Tokaweka Priceless', J. R. Houlbrooke.

Reserve Grand Champion Female:

Reserve Senior Champion Female:

- 'Emerald Dale Eileen', H. E. & J. Marshall

Junior Champion Female and Winner of Society Silver Trophy:

- Coopental AR39', N. & D. Barnett.

Reserve Junior Champion Female

- 'Wharton Hall Frosty', J. & D. Hall.

Coopental Performance Class: (12 entries)

Bulls No. 147 J. R. Houlbrook	Points 51.9
148 D. S. Crosson	49.2
143 H. E. & J. Marshall	46.8
136 G. G. Pearce	46.1
Heifers No. 130 N. & D. Barnett	43.6
123 A. & J. Hall	41.6
129 D. H. Leaf	41.3
122 G. G. Pearce	40.2

Society Herdsmen Trophy:

- Mrs Sally Aukaha, Motiti Island.

INTERBREED CLASSES

Cow: 3 Years and Over (24 entries)

- 1st Charolais
- 2nd Angus
- 3rd Murray Grey
- 4th Angus

Heifer: 2 Years (19 entries)

- 1st Simmental (J. R. Houlbrooke)
- 2nd Hereford
- 3rd Simmental (H. E. & J. Marshall)
- 4th Murray Grey

Heifer Yearling: (39 entries)

- 1st Charolais
- 2nd Simmental (G. G. Pearce)
- 3rd Angus
- 4th Simmental (N. & D. Barnett)

Grand Champion Female:

Charolais

Reserve Grand Champion Female:

Simmental (J. R. Houlbrooke)

Heifer: (Yearling Novice) 11 entries

- 1st Simmental (J. & D. Hall)
- 2nd Simmental (J. & D. Hall)
- 3rd South Devon



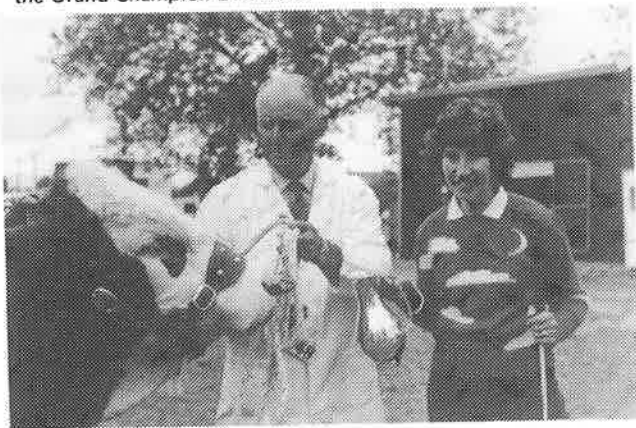
Royal Show



Tish Graham, wife of the Royal Show Judge presents the Supreme Simmental Trophy to Star Absolom, who also won the Grand Champion Bull class.



Jim Houlbrooke of Northland receives The Harlau Salva as runner-up to the Supreme and Champion female winner.



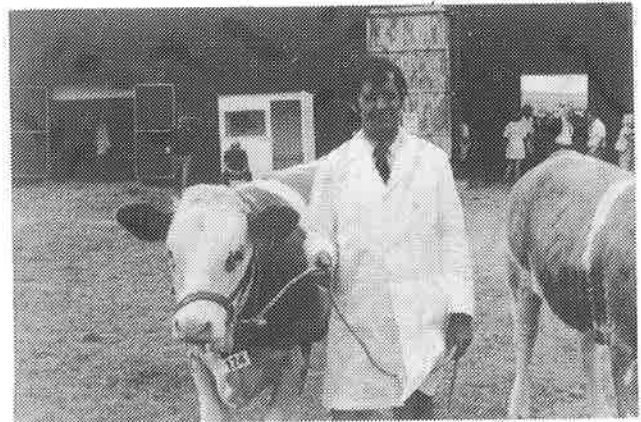
Barbara Harwood, a visitor from Canterbury presents Stan Crosson of Timaru with the Trophy for Junior Champion Bull.



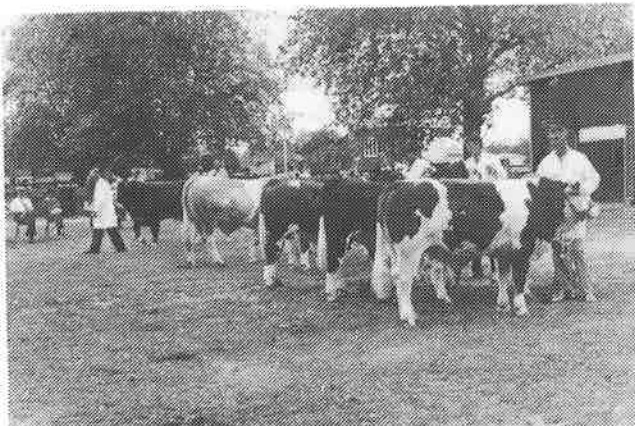
Gwen Houlbrooke with Neil Barnett of Arohena who took the Junior Heifer Championship.



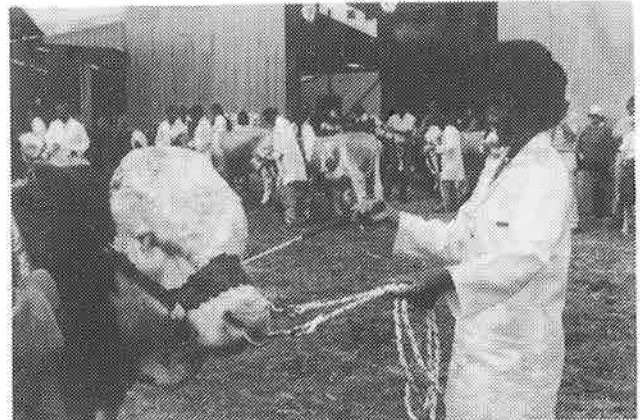
New exhibitor at the Royal, Jim Marshall of Kaimai (near Tauranga) with his Reserve Champion Heifer.



John Hall of Raglan another new Royal competitor who won the Senior Yearling Class and also did well in the Inter-Breed Classes.



A strong line up of yearling bulls.



Sally Aukaha of Motiti Island took a second prize in her first Show and also won the best herdsman award.

Bull: 2 Years and Over (26 entries)

- 1st Charolais
- 2nd Angus
- 3rd Simmental (G. G. Pearce)
- 4th Hereford

(Note:) Due to a mis-interpretation of the entry schedule 'Rissington Monitor' was ineligible for this class in which we are certain he would have done well.

Bull: Yearling (43 entries)

- 1st Charolais
- 2nd Simmental (D. S. Crosson)
- 3rd Shorthorn
- 4th Angus

Grand Champion Bull:

Charolais

Reserve Grand Champion Bull:

Charolais

Yearling Pairs: (35 entries, pairs)

- 1st Charolais
- 2nd Hereford
- 3rd Angus
- 4th Simmental (G. G. Pearce)

Founders Cup: (Team one bull, three females)

Winner: Charolais Team

Meat & Wool Cup:

- 1st Charolais
- 2nd Simmental (J. P. Absolom)
- 3rd Angus
- 4th Hereford

Outside the Judging Ring the Society in conjunction with the Waikato Club set up a 'centre', which was well patronised by exhibitors and visitors, members and friends throughout the Show. Lunch was provided on a cost basis and proved highly popular.

HAWKES BAY SHOW

A strong entry for a Provincial Show, Hawkes Bay attracted twenty-seven entries from four exhibitors. Tony and Glenis Thompson of the well known Glen Anthony Stud at Waipukurau must be congratulated on a tremendous effort in fielding a team of no less than fourteen entries!

Results were as follows:

Cow: 3 Years and Over

- 1st 'Glen Anthony Harmony', A. H. & G. M. Thompson
- 2nd 'Peaston's Kate', A. H. & G. M. Thompson
- 3rd 'Glen Anthony Limelight', A. H. & G. M. Thompson

Cow: 3 Years

- 1st 'Russley Nelda', A. H. & G. M. Thompson

Heifer: 2 Years

- 1st 'Glen Anthony Prestige', A. H. & G. M. Thompson
- 2nd 'Glen Anthony Piaffe', A. H. & G. M. Thompson
- 3rd 'Kiwi Pinky', T. Murphy

Yearling Heifer:

- 1st 'Waimiro Ray', A. B. Perry
- 2nd 'Waimiro Rina', A. B. Perry
- 3rd 'Glen Anthony Rosette', A. H. & G. M. Thompson

Pair Yearling Heifers:

- 1st A. B. Perry
- 2nd A. H. & G. M. Thompson

Bull: 3 Years and Over

- 1st 'Rissington Monitor', J. & S. Absolom
- 2nd 'Glen Anthony Lustre', A. H. & G. M. Thompson

Bull: 3 Years

- 1st 'East Dome Norton', A. B. Perry

Bull: 2 Years

- 1st Rissington Zazou, J. & S. Absolom

Yearling Bull:

- 1st 'Glen Anthony Regent', A. H. & G. M. Thompson

- 2nd 'Waimiro Red', A. B. Perry

- 3rd 'Waimiro Rollo', A. B. Perry

Pair: (Bull and Heifer)

- 1st A. H. & G. M. Thompson

- 2nd A. B. Perry

- 3rd A. H. Thompson

Group: Bull and Three Females

- A. H. & G. M. Thompson

Sire Progeny Class:

- A. H. & G. M. Thompson

Co-opental Performance Class:

- 1st A. H. & G. M. Thompson

- 2nd J. & S. Absolom

- 3rd A. B. Perry

Senior Champion Female and Grand Champion Female:

- 'Glen Anthony Harmony', A. H. & G. M. Thompson

Reserve:

- 'Glen Anthony Prestige', A. H. & G. M. Thompson

Junior Champion Female:

- 'Waimiro Rina', A. B. Perry

Reserve:

- 'Waimiro Ray', A. B. Perry

Senior Champion Bull and Grand Champion Bull:

- 'Rissington Monitor', J. & S. Absolom

Junior Champion Bull:

- 'Glen Anthony Regent', A. H. & G. M. Thompson

Reserve:

- 'Waimiro Red', A. B. Perry

Supreme Champion Simmental 'Rissington Monitor'

- Meat & Wool Cup 'Rissington Monitor'

- Export Beef Trophy, A. H. & G. M. Thompson

GISBORNE SHOW

Simmentals made their presence felt at the Gisborne Show once again in early October. While having no official report on results of Classes I am aware 'Rissington Monitor' (J. & S. Absolom) won the Meat & Wool Cup for the 3rd year in a row. Well done John and Star.

RANGIORA SHOW

Just north of Christchurch, Rangiora has hosted an A. & P. Show for many years. 1985 is the first year Simmentals have competed in classes although we understand one or two did appear on the Showgrounds some years ago before we officially started showing! This year a small group of enthusiasts got together and created classes and showed with some impact and success.

A. A. T. & L. Partridge exhibited a two year old bull which was placed Champion Simmental and Champion of All Breeds. They also won the Two Year Heifer Class with W. F. Wright second.

The yearling bull class was won by W. J. & B. Harwood with W. F. Wright second. The yearling heifer was won by A. J. Banks, D. & J. Matheson second and W. J. & B. Harwood third.

W. J. & B. Harwood also won the yearling All Breeds bull class. Other yearling All Breeds bull class. Other beef breeds competing were Hereford, Shorthorn and South Devon.



Shows

ELLESMERE SHOW (NEAR CHRISTCHURCH)

A one day Show, ranked as one of the largest in the Country, Ellesmere is fast becoming a 'pipe opener' for following provincial Shows.

This year twenty-three Simmentals were entered in the beef classes which totalled sixty animals.

In Simmental classes O. J. Osborne won Senior Female and Champion Simmental. A. A. T. & L. Partridge 2 Year Heifer. O. J. Osborne, yearling Heifer.

A. A. T. & L. Partridge Senior Bull. C. S. Patterson, Yearling Bull.

Group Class, A. A. T. & L. Partridge.

Other place getters were D. & J. Matheson (new exhibitors) 2nd in Yearling Heifer Class and G. Habberjam 3rd in the Yearling Bull Class. W. J. & B. Harwood also exhibited as did two other new exhibitors, M. Groters and N. D. Oliver.



Neil Oliver of Hororata.



Dave Matheson of Christchurch.



Warren Harwood of Rangiora.

'BELLS ACROSS THE TASMAN'

Within our Council we have but one batchelor. Woody Rouse of Five Rivers will shortly lose this status when he marries Penelope (Eppi) Millar of Melbourne. Eppi is no stranger to New Zealand, having on several occasions worked here for stud breeders in Show and Sale preparation where she has presented cattle with considerable success including those of her future husband. As well as being a top stud groom, Eppi is a trained nurse and although she is a city girl her heart is in the country. We take this opportunity of warmly congratulating these people and wish them every happiness.

It is co-incidental that of our eight Councillors three will now have Australian wives. One past Councillor also has the same situation. It is nice to know that 'CER' is working!



Shows



Peter Snelling, Livestock Manager of Borthwick's presents the Coopental Trophy and Sash to Jim Houlbrooke who won the performance class at the Royal. Borthwick's generously provided \$500 sponsorship for this class which they have supported for several years.

THE FUTURE

In a time of uncertainty BORTHWICKS place their confidence in the Prime Beef Market. They know that the strengthening of the New Zealand dollar has had an adverse effect on producer returns. But this makes them more determined to bring a better deal to the New Zealand Beef Farmer.



**BORTHWICKS LEADERS IN CHILLED
AND AGED BEEF EXPORTING**

Shows

CANTERBURY SHOW FIELDS LARGE TEAM

One of the largest provincial three day Shows in the Country, Canterbury has consistently attracted a strong Simmental entry. This year was no exception with thirty-three entries. There was some lack of entries in the senior classes as there was at the recent Royal. The standard of animals was however very good and made an impressive line-up and several new exhibitors had their first outing presenting some excellent entries.

Supreme Champion of the breed went this year to D. S. Crosson of Timaru with a five year old cow by Seigfried with calf at foot. Following success at the Royal, Stan also secured the Junior Bull Championship and was second with this entry in the All Breeds yearling bull class.

Judge this year was Mr Alister Duncan of Mossburn, who has in previous years been a competitor himself.

Class results were as follows:

Cow: 3 Years and Over

1st D. S. Crosson, Timaru, 'Risingholme Laura'

2nd O. J. Osborne, Doyleston, 'Winfield Libby'.

Cow: 3 Years

1st O. J. Osborne, Doyleston, 'Winfield Nellie'.

Heifer: 2 Years

1st D. C. & M. Carter, Teddington, 'Avon Park Posy Girl'

2nd A. A. T. & L. Partridge, Ladbrooks, 'Ladburn Pelly'

3rd D. M. Elliot, Waimate, 'Marshlaw Penny'

Heifer: Senior Yearling

1st O. J. Osborne, Doyleston, 'Winfield Ragamuffin'

2nd A. J. Banks, Kaiapoi, 'Ohapuku Rahma'

Heifer: Yearling

1st D. & J. Matheson, Christchurch, 'MacMathan Red Rosette'

2nd O. J. Osborne, 'Winfield Raffles'

3rd W. J. & B. Harwood, Rangiora, 'Ohoka Renee'

4th O. J. Osborne, 'Winfield Ruby'

Pair of Heifers:

1st O. J. Osborne

2nd W. J. & B. Harwood

Bull: 2 Years

1st J. N. Guthrey, Amberley, 'Avon Park Proud Flesh'

2nd A. A. T. & L. Partridge, 'Richmond Percy'

Bull: Senior Yearling

1st C. J. Patterson, Southbridge, 'Springbrook Sir Robert'

2nd A. A. T. & L. Partridge, 'Ladburn Randwick'

3rd Daly/Groters Partnership, Cheviot, 'The Lakes AR5'

Bull: Junior Yearling

1st D. S. Crosson, Timaru, 'Risingholme Royal'

2nd D. M. Elliot, Waimate, 'Marshlaw Rhumba'

3rd C. J. Patterson, 'Springbrook Sir Richard'

4th G. H. Habberjam, 'Wilderness Rex'

Group of Three Animals

W. J. & B. Harwood

CHAMPIONSHIPS AND TROPHIES

Supreme Champion Simmental and Senior Champion Cow

Winner of Pendeen Silver Trophy.

'Risingholme Laura', D. S. Crosson.

Reserve Senior Cow

'Winfield Libby', O. J. Osborne.

Senior Champion Bull

Winner of R. H. Kerr Silver Jug.

'Avon Park Proud Flesh', J. N. Guthrey.

Reserve Senior Bull

'Richmond Percy', A. A. T. & L. Partridge.

Junior Champion Bull

Winner of Merck Sharp & Dhome Salver

'Risingholme Royal', D. S. Crosson.

Reserve Junior Bull

'Springbrook Sir Robert', C. S. Patterson.

Junior Champion Heifer

Winner of Swiss Challenge Bell

'MacMathan Red Rosette', D. & J. Matheson.

Reserve Junior Heifer

'Winfield Ragamuffin', O. J. Osborne.

This year for the first time the Canterbury Show held Yearling All Breeds Classes for both Champion bulls and heifers. The classes were judged on the same basis as the Meat & Wool Cup with all judges participating.

In the Junior Bull — D. S. Crosson was second with 'Risingholme Royal', the same placing he had at the Royal, this time to a very good Hereford.

In the Junior Heifer — D. & J. Matheson, first time exhibitors at Canterbury took the award with a beautiful young heifer, with a Hereford second.

The Meat & Wool Cup was won by the Royal Show winner, B. T. Fisher with his two year old Charolais with the Simmental of J. N. Guthrey second, an Angus third and Hereford fourth. (Co-incidentally the breed order was the same as the Royal).



Pam Duncan, wife of the Judge presents Stan Crosson of Timaru with the Champion Female Trophy. Stan also won the Supreme Award.



Robin Lowry, Society President presents the R.H. Kerr Trophy for Champion Senior Bull exhibited by J. N. Guthrey of Amberley and paraded by Mrs Melinda Carter.

**HAVE YOU EVER ADVERTISED
IN YOUR MAGAZINE ???
HOW ABOUT THE NEXT ISSUE?**

EDITORS NOTE: Insufficient space prevents the printing of other Canterbury photographs which will be included in the next issue.

DALSTUD EMBRYO TRANSPLANTS

(NEW ZEALAND LTD)

INVOLVED IN TRANSPLANTS SINCE 1975
NEW ZEALAND'S LONGEST ESTABLISHED E.T. COMPANY

DALSTUD *PERFORMS MORE CATTLE TRANSPLANTS
THAN ANY OTHER COMPANY*

BOTH NORTH AND SOUTH ISLAND COVERED

DALSTUD OFFERS:

- ★ ON FARM TRANSFERS
- ★ IN CLINIC TRANSFERS
- ★ EMBRYO FREEZING
- ★ SUPPLY OF RECIPIENTS
- ★ IMPORT & EXPORT OF EMBRYOS



*THESE BAR 5 DIGNIFIED CALVES AT RISSINGTON
ARE PROOF OF WHAT CAN BE ACHIEVED.*

FOR FURTHER INFORMATION CONTACT: **GUY SARGENT**
PHONE: (063) 291837 or (063) 291854

OR WRITE TO: **DALSTUD EMBRYO TRANSPLANTS**
POPLAR ROAD, R.D. 4, PALMERSTON NORTH.

Miscellaneous

EMBRYO TRANSPLANTS

This season there have been quite a number of embryo (or ova) transplants and also a few imports of fertilised embryo from overseas. We remind breeders involved in these procedures of the requirements for registration of the resulting progeny. This is clearly set out in the Regulations of the Rule Book.

With the establishment of new embryo transfer units who are doing the transfers on the breeder's farm please make sure you obtain the necessary paper documentation from the veterinarian. We are aware that the necessary forms have been drawn up.

In specific reference to progeny from imported fertilised embryo please note that it is a requirement that progeny are blood typed and parentage verified.

If any breeder is uncertain of the procedure please contact or write to the Office.

NEW A.I. SIRE LIST BOOKLET

A new booklet of A.I. Sires has recently been produced. This lists those sires advised as being available from distributors of semen in New Zealand and registered with the Simmental Society. Please ensure that before placing your order with a distributor that the semen you are purchasing is from a registered sire only. If there is any doubt contact the Society Office.

We remind breeders that if they own a New Zealand bred or imported bull from which they wish to market semen to other breeders it must be registered as an A.I. Sire.

We are aware that some breeders take and freeze some semen from their own top herd sires as an insurance against loss of the bull or because the particular sire is reaching the end of his natural use span and they wish to maintain his bloodline for their own use. In this case it is not necessary to register him as an A.I. Sire.

You will note in our new booklet we have listed computer numbers for your information when filling out your Calf Entry Sheets or sales entries and transfers.

BULL SALE SURVEY

In August we sent out a survey paper on the sale of bulls for the past few years and a projected estimate for 1986. The response has been good but there are still numerous members who have not replied. We would still like to get your analysis as it will assist us in promotion plans for the next bull selling season. If you cannot find the form the information we require is sales of bulls for commercial or stud use 1982, 1983, 1984, 1985 and an estimate of what you will have in 1986 split into registered and commercial.

SIMBEEF TAGS

With the ever expanding use of Simmental bulls in the cross breeding system more and more crossbred calves are becoming available. They are a great tool for promotion of the simbeef scheme. Most calves carry a tag of some description and a simbeef tag is just as easy to apply as any other.

When you sell a bull, market the simbeef tag system with it.

With your own commercial crossbred calves do not forget to tag them simbeef as well. Tags are available direct from the office.

DE-HORNING

Most of our breeders dehorn their cattle. It has very definite advantages. The Simmental breed is naturally horned but for some obscure reason produces a galaxy of different horn styles and shapes. A herd that has been carefully and properly dehorned has uniformity and makes handling in yards a great deal easier. There is far less 'agro' and bullying than in a horned mob. A trip to any processing works will illustrate graphically the damage and injury horned cattle can do to each other — it is horrendous. If done at the correct time and carried out carefully there is little or no regrowth. The job is one some people do not enjoy — veterinarians will do it and 'local' anaesthetics are available. It may seem unkind to take the horns off but in the long term it has considerable advantages.

STOP PRESS !!!

OHU SIMMENTALS

HERD 573

1985 ROYAL SHOW ALL BREEDS CLASSES

- ★ YEARLING HEIFER (39 ENTRIES) 'OHU ROYAL', 2ND 8 RES. JNR CHAMP.
- ★ BULL, 2 YEARS & OVER (26 ENTRIES) 'ROTOMARA NELSON' 3RD.
- ★ PAIR YEARLINGS (35 ENTRIES) 'OHU REG 8 ROYAL' 4TH.

INSPECTION & ENQUIRIES

GILBERT PEARCE, No 1 R.D PUTARARU. PHONE PUKETARUA 823

Simbeef

CARCASE COMPETITIONS

In past years we have awarded a cash prize to the highest placed Simmental-cross animal in Provincial Carcase or Hoof and Hooks competitions. Unfortunately, latterly, this system has not worked terribly well as we have not always been informed of results. Sometimes this is because the winner or place getter is not a Simmental breeder or member (an increasing situation with more cross-bred cattle).

For the project to work we must receive some firm evidence of the success — "Joe Bloggs won at Sefton with a great steer" does not do much or tell as much.

The Council wish to encourage participation in carcase competitions. It is a positive and indisputable bonus to any breed.

With this in mind they have set a new scale of prizes as follows:

\$100 will be awarded to the outright winner of any Hooks class.

\$50 will be awarded to the highest place getter, if not the outright winner.

The carcase of course must be a Simmental or Simmental cross. We depend on breeders or participants in the Provincial areas advising us of these successes. For publicity we would like to know as much detail as possible — number of animals in competition, weights, age etc. Also the full name and address of the winner or place getter.

These new awards are for next season. We look forward to your participation and success.

SIMBEEF THREE YEAR OLD STEERS — IMPRESSIVE

In July this year a line of forty, three year old steers on account of Butland Industries in the Waikato which is administered by Alan Radburn, a long time Simmental breeder were processed with outstanding results at Westerfield near Auckland.

These animals all graded 'P1' and averaged a dressed weight of 417.21 kgs returning, \$1,189 per head (285 cents per kg.).

It is not often that a line of this age and number are processed. The accompanying photographs tell their own story.

(Editors Note: We take this opportunity of thanking Alan Radburn for supplying us with this information.)



'Find the Subaru'

Part of the group of steers at Alan Radburns demonstrate just how big they are.

SILVERMOYLE SIMMENTAL TUD



*We wish to say THANK YOU
to all our clients from
Whangarei to Invercargill.*

*We hope your purchase of a
'Silvermoyle' bull
will bring much satisfaction.*

*We wish you all
a Happy Christmas
and a Prosperous 1986.*

*Call and inspect our
cattle at any time.*

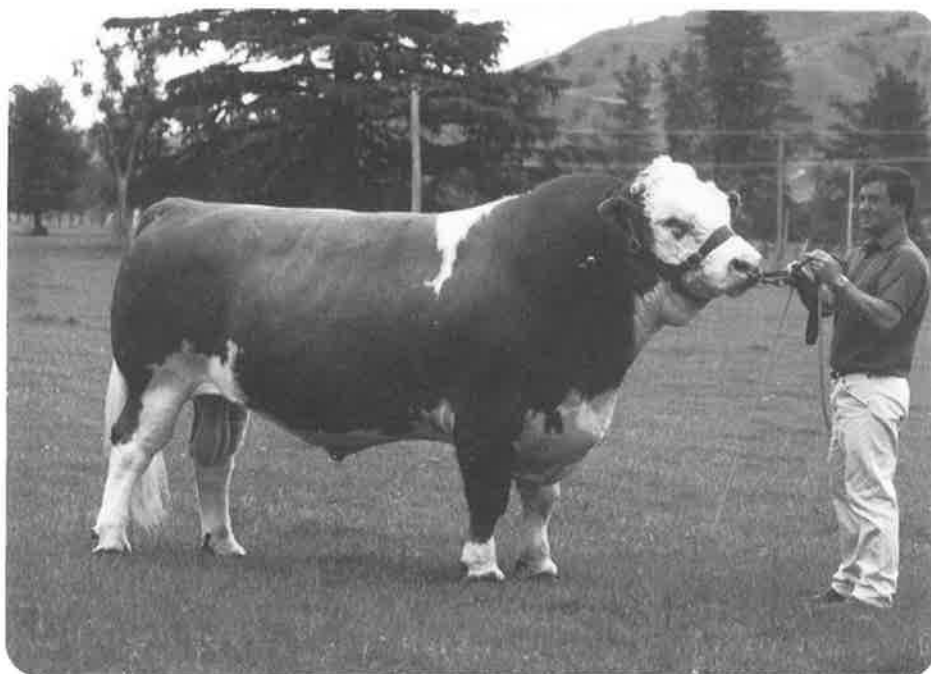
**ALL ENQUIRIES WELCOME,
WILLIE AND GENE ECCLES.
PHONE MANAWARU 808.
MANAWARU ROAD, RD 1, TE AROHA.**

A COSY STORY

Our annual Sales are held in winter for various reasons — usually it is cold. At our last South Island Sale in one fellow's mind it must have been exceptionally cold. A Reporter from one of Christchurch's leading papers was dispatched to the Sales Venue to observe and report on a very special bull sale. He was unaccustomed to livestock and enquired with a number of the people present regarding the 'speciality' of this particular sale and after some evasive answers was referred to the Secretary. The gentleman enquired if he could see this special phenomenon on which he had been asked to report — he had been told that the bulls all wore special hand knitted bags on their testicles and wore hand knitted rugs over their kidneys!! The conversation could have gone on for some time but the mirth of the onlookers gave the show away. The answer could have been that the 'boys' had just 'stripped' for the Sale!

What happened with his colleagues back in the reporter's office is probably unprintable.

RISSINGTON SIMMENTALS



'RISSINGTON MONITOR'

MEAT & WOOL CUP WINNER: GISBORNE 1983, 84, 85 — HASTINGS 84, 85
RUNNER-UP AT 1985 ROYAL AT HAMILTON

OUR SHOW RECORD IS NOW TEN MEAT & WOOL CUPS

- 5 GRAND CHAMPION BULL AWARDS AT 5 ROYAL SHOWS
- 3 SUPREME SIMMENTAL AWARDS AT ROYAL SHOWS
- PLUS MANY OTHER PRIZES

OUR 1985/86 BREEDING AND MARKETING PROGRAMME

480 FEMALES MATED — 100 IMPLANTED WITH 'BAR 5' EMBRYO FROM CANADA.

SIRES USED OVER LAST FEW YEARS: LJB JADE, RISSINGTON MONITOR, RISSINGTON MAJOR (Ai), STONE HUT LUDWIG, RISSINGTON PERCY, RISSINGTON ZAZOU, AVONCROFT ASTER (Ai), SONNY BOY (Ai), BEAT, SIEGFRIED, BBA GALANT, INHERITOR, BAR 5 DIGNIFIED, AND SEVERAL OF OUR TOP YEARLING BULLS.

-
- ★ FEMALES WILL BE SOLD PRIVATELY IN THE AUTUMN OF 1986
 - ★ EMBRYOS ARE ALSO FOR SALE FROM SOME OF OUR PROVEN COWS
 - ★ JUNE 18th IS BULL SALE DAY FOR THE MOST EXCITING MOB OF BULLS WE'VE BRED

PERFORMANCE IS THE NAME OF THE GAME

JOHN AND STAR ABSOLOM
R.D.4 NAPIER, PHONE: RISSINGTON 836



THE LEVELS



HERD No. 3



WROXALL PRIDE AND 8 weeks old son, LEVELS RISSINGTON (by RISSINGTON MAJOR)
and RISSINGTON MAJOR.

— Country Life photo

WROXALL PRIDE:

- ★ Champion Female Invercargill Royal show, 1984
- ★ Champion Female Timaru A & P Show, 1984

RISSINGTON MAJOR:

- ★ Supreme Champion Timaru A & P Show, 1984
- ★ Supreme Champion Christchurch A & P Show, 1984
- ★ Supreme Champion Invercargill Royal Show, 1984
- ★ All Breeds Champion Timaru A & P Show, 1984
- ★ All Breeds Champion Invercargill Royal show, 1984

RISSINGTON MAJOR SEMEN IS AVAILABLE THIS SEASON.

**THE LEVELS HAVE A SELECTION OF FIFTEEN MONTH OLD
HEIFERS FROM A CROSS SECTION OF BLOODLINES FOR SALE**

**RODNEY COX — THE LEVELS — No 4 R.D. TIMARU
— PHONE Timaru 82-418**

ENQUIRIES AND INSPECTION WELCOME