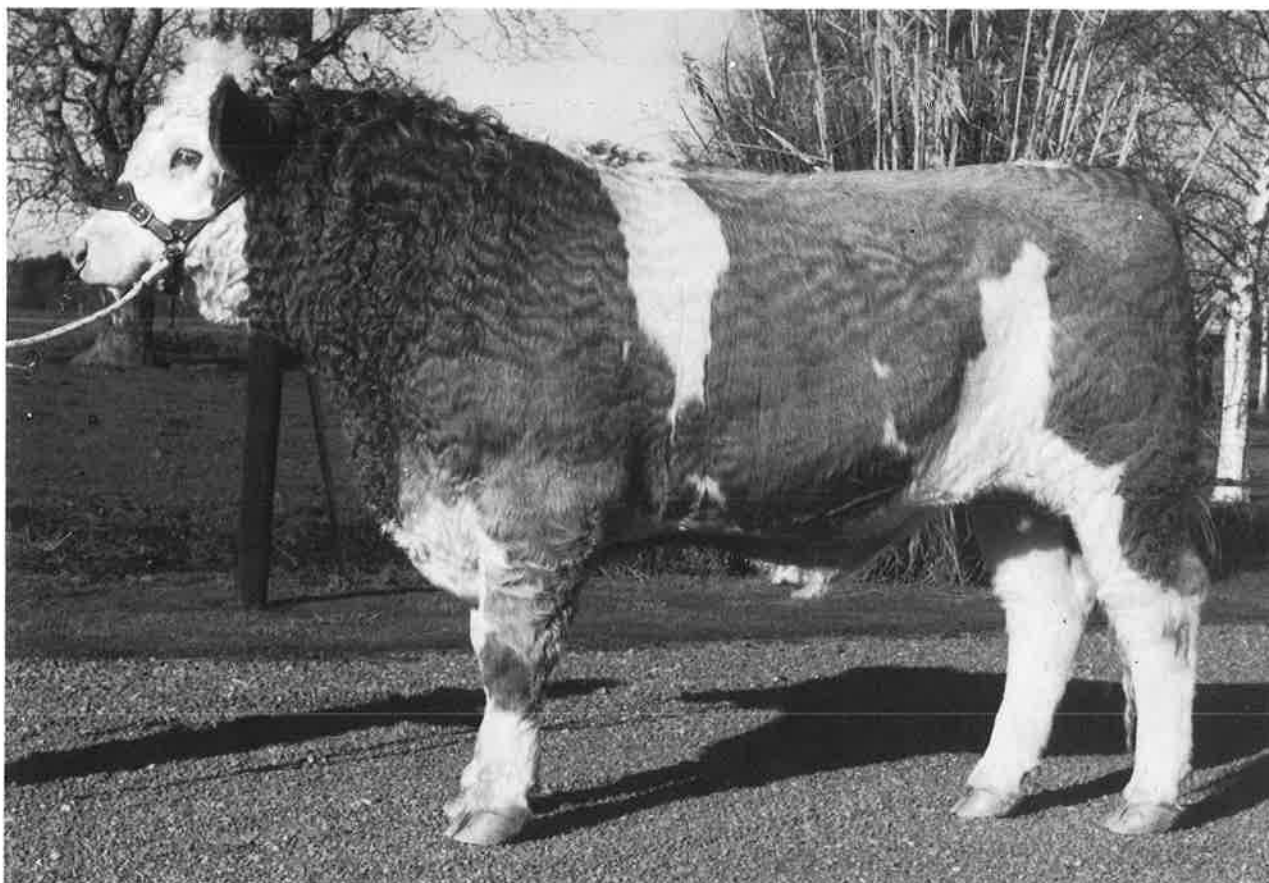


# **new zealand simmental**



**summer issue : december 1984 : number twenty two**

# **RISINGHOLME SIMMENTALS and SHEEP**



**RISING HOLME NAPOLEON** sold at the new 1984 South Island Sale for \$17,000 to the partnership of G. & L. Bain, Outram, New Zealand, and Pine Mountain Cattle Company, Oregon, U.S.A.

**NAPOLEON** weighed 640 kg at 400 days on grass. A  $\frac{3}{4}$  brother will be offered at the 1985 sale.

Top studs of **HAMPSHIRE** and **BORDER LEICESTER** sheep are run on RISING HOLME.

Also Romney, Perendale 1st cross rams available. Selected from a 4,000 ewe flock for easy-care fertility and fleece weight. Shearling rams seen last season clipped up to 7.4 kg at 8 months mid March.

**ENQUIRIES AND INSPECTION WELCOME**

Stan Crosson  
Murray Crosson

RISING HOLME

No 2 R.D. Timaru  
Phone: St Andrews 368 & 358

# THE SIMMENTAL CATTLE BREEDERS' SOCIETY OF NEW ZEALAND (INC.)

118 VICTORIA STREET, CHRISTCHURCH 1, NEW ZEALAND.

P.O. BOX 25-100, VICTORIA STREET, CHRISTCHURCH. Phone 793-166

## Contents

Editorial . . . . .	1
The Simmental in 1984 . . . . .	2
Profile . . . . .	3
Technical. . . . .	5
Visit to America & Canada. . . . .	6, 7
Sales . . . . .	8
Technical. . . . .	9
Shows . . . . .	12, 13, 14, 15
Simbeef . . . . .	17
Miscellaneous . . . . .	18, 19, 20

## Advertisers

Risingholme Simmentals,  
D.S. Crosson  
Pukekohu, H.R. Lowry  
Coopental, N. & D. Barnett  
Guthrey Breeding Services  
Levels Gentech  
Manor Farm, D.C. & M.J. Carter  
Waimiro Simmentals, A.B. Perry  
East Dome, W.A. Rouse  
Borthwicks  
Rissington Simmentals, J.P. Absolom  
Levels Farming, R.N.S. Cox

## Office Staff

Ian S. Johnstone  
(Secretary/Manager)  
Phone: Christchurch  
(Bus.) 793-166  
(Pvt.) 487-572

Mrs Ann Boyce  
(Secretary)

Mrs Yvonne Kingsland

## EDITORIAL

The year has been eventful and successful. A World Congress has been held in these latitudes and we were fortunate in having quite a large contingent of overseas visitors tour our country — they were more than impressed

In our administration there have been a few changes and while we have lost some stalwarts we have gained some new ones — a new President and three new Councillors.

Of great benefit, we have had an excellent selling season topping numerous weaner markets with out Simbeef calves and selling more bulls at higher average prices than every before. Our membership has been greatly boosted by an influx of new and enthusiastic members.

It is beyond doubt that our acceptance in the commercial arena is the stimulus to our breed and our pedigree breeders. We must grasp it with both hands and promote it. Follow up your bull sales, tag your commercial calves with Simbeef tags and support your Club activities and each other.

## COUNCIL MEMBERS

President:	H.R Lowry, Pukekohu, P.O. Box 2369 Stortford Lodge Hastings. Phone: 86 236
Vice President:	A.B. Perry, Penny Road R.D. 9, Palmerston North Phone: Rongotea 772
Councillors:	J.P. Absolom, Rissington R.D. 4, Napier Phone: Rissington 836 N.J. Barnett, Arohena, No.7 R.D., Te Awamutu. Phone: Pukeatua 802 D.C. Carter, Manor Farm, R.D. 1, Lyttelton. Phone: Christchurch299731 J.D. Graham, Waingaro, R.D. Parnassus. Phone: Parnassus 809 J.R. Houlbrooke, South Road R.D. 2 Waipu. Northland Phone: Waipu 15M W.A. Rouse, East Dome, Five Rivers R.D. 3. Lumsden Phone: Lumsden 86R

### CHAIRMAN OF COMMITTEES

FINANCE: H.R. Lowry TECHNICAL: N.J. Barnett,  
PROMOTION: A.B. Perry SALES: J.D. Graham

# THE SIMMENTAL IN 1984

(Comments from our President, H. R. Lowry)



*Mr and Mrs Robin Lowry at a Sale earlier in the year.*

1984 has thus far been a wonderful year for Simmentals. The weaner sales with many pens bringing over \$400 and some of these cattle being bred on some of our harder hill country has demonstrated to all the value of economic beef production. This is in stark contrast to the sheep industry where an over production of lamb and unsaleable mutton has been propped up by the taxpayer in the form of supplementary minimum prices. It only proves yet again that interference in the market place creates distortions that are very difficult to alter.

Every western country eats beef, it is an upmarket product with U.S.A. taking nearly all our forequarter and dairy beef for hamburger production so there is a consistent demand albeit at prices that do fluctuate. Current prices are not very good but the high U.S.\$ value and our own devaluation have helped give beef producers an excellent return. The premium being paid for animals with Simmental blood are substantial and the faster growth rate and leaner carcass of simmental have meant that those farmers finishing cattle have received a return well ahead of lamb production. Long may it continue. It is interesting to note that the Ministry of Agriculture is at last paying heed to the figures we have been producing when advising farmers about livestock production.

With the above in mind it is our intention to have Field Days in areas of New Zealand where cow numbers are high but as yet little or nothing is known of Simmentals. The areas we have targeted for the autumn of 1985 are: Northland, Pongaroa, east of Dannevirke in Hawkes Bay and Western Southland. We shall produce some commercial animals for demonstration purposes and put on our American slides and promote the use of Simmental bulls for cross breeding. There will also be a beef Field Day at Neil Barnett's property at Arohena on 28th February, 1985 for all interested members.

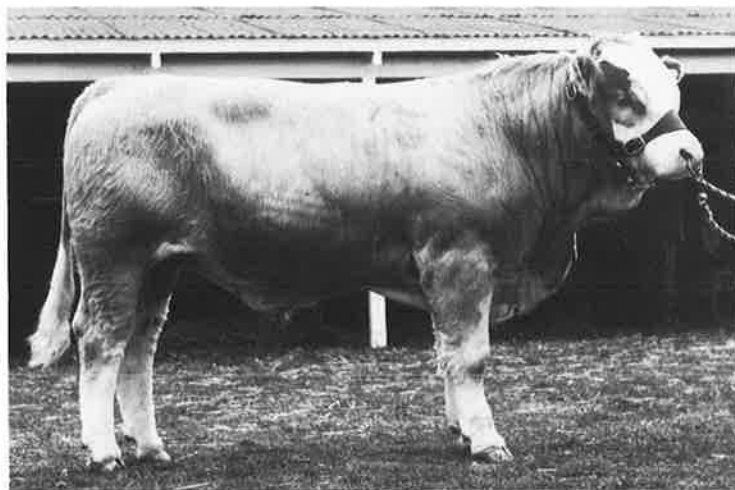
If we can maintain our high profile amongst the farmers with continuing good returns in the market place then our future is assured. The efforts of those breeders who are prepared to exhibit in A. & P. Shows are highly commendable and the results thus far in this year, outstanding. It all assists greatly in our Breed promotion and the resultant publicity is cost free to the Society.

Our membership is growing, another sign of increased breeder interest brought about by commercial results. The breed is on the march and it is a great privilege to be a part of it.

# PUKEKOHU

## MEAT & WOOL CUP WINNERS

### 1980 ROYAL SHOW 1983 ROYAL SHOW



## PUKEKOHU PRINCE

**Born: 4.7.83**

Pedigree Sire: L.J.B. JADE

Dam: IRISH EMPRESS

400 day weight: 540 Kg

**WINNER OF ALL BREEDS  
YEARLING CLASS AT  
HAWKES BAY SHOW 1984**

**PRINCE will be offered for sale in 1985.**

H.R.LOWRY

PUKEKOHU

Box 2369

Shortford Lodge, Hastings

Phone: (070) 86-236

# Profile

Terry and Lynne Sloane breed Simmentals on 500 acres. Their home farm of 300 acres has been in the Sloane family for five generations and is situated at Mata, 27 kilometres south of Whangarei, comprising of a balance of highly productive flats and rolling clay country.

The property supported a dairy herd for many years and with the introduction of Simmentals Terry saw beef production as an attractive alternative to his daily round in the milking shed. The base herd from which the grading-up system started was Milking Shorthorn crossed with Angus and Hereford.

Approximately 180 breeding cows are carried ranging from halfbreds through to purebred. Nearly all the progeny are finished on the property. About 30 bull calves are 'steered' annually and some sold as yearlings through the local saleyards, where they have topped their section each time they have been offered. The balance of the steers are sold off as two year olds apart from one or two which are kept for the annual 'hoof and hooks' competition where again the Sloane's cattle have made their mark. Those bull calves not 'steered' are carried through as bull beef at two year olds with the top few being set aside for sale as commercial bulls for which there is an increasing demand in the area.



*Rising two year old steers in attractive setting.*

The Sloane's herd has been on Beefplan for twelve years and with the help of recorded performance top cows are A.I.'d once and then run in selected mobs with herd sires for nine weeks. Heifers are run with the bull for six weeks and are calved as two year olds. High fertility is one of the top priorities and is considered a very important factor when selling bulls.

About 50% of the herd are now polled through grading-up and the selected use of polled herd sires.

Terry and Lynne work hard together in their farming enterprise but still find time to actively promote the Simmental breed in the Northland area at every opportunity. They and a few stalwarts have set the breed on its feet in the Northland area where it is now becoming well established and accepted.

Apart from farming the Sloanes occupy their leisure time boating, scuba diving and as Lynne describes it playing the 'dreaded golf'!



*A Sloane bull shown with success this year.*

## THE LEVELS PROMOTION AWARD

Awarded to what is considered the best individual effort in promotion of the breed The Levels Trophy this year was presented to the Sloanes. They have worked consistently and quietly in the interests of the breed since 1975. Unfortunately we did not have the opportunity to congratulate them at the time of the annual Meeting but take this opportunity of doing so now.



*Terry and Lynne Sloane.*



Coopental Simmental Stud

**COOPENTAL'S STUD SIRE**  
**L. S. LOPEZ**



***ONE OF NEW ZEALAND'S FEW  
PROVEN SIRES***

This Bull is leaving outstanding progeny. Stud and Commercial Sons available this year. They include '**PIERRE**' — a dark red full brother to '**NAPOLEON**' — the 1983 **ROYAL SHOW ALL BREEDS CHAMPION**.

*Inquiries and Visitors Welcome*  
**DERRIEN AND NEIL BARNETT**  
R.D.7 Te Awamutu  
Phone: Pukeatua (08224) 820

# Technical

## THE COMPUTER

This season has seen a good response to 'the machine' and the standard of returns from breeders has been excellent with an ever decreasing number of errors showing that people are getting the hang of it. We still for various reasons get a few late comers, but there is usually some minor problem when this occurs. Those that have had problems and have had the good sense to contact the office have found that their problems are not as great as they thought and they are very quickly put on the right track by our competent staff.

Most breeders will have received their Calf Entry Sheets for their 1984 calves by the time this is at print — these are due back in the office by the 28th FEBRUARY, 1985. If you can complete them before then do so and send them to us so we can process them, it saves us getting 'swamped' at the end of February.

Once your Calf Entry Sheet is returned you will get back your Calving Report which enables you to make a final assessment of your registrations. Provision is also available to record weights on this return.

For your schedule of 'returns' for the computer please read the enclosed 'Calendar' — some will already have received one but the enclosed will serve as a reminder.

Registration Certificates for 1983 calves have again been a bit of a headache which we hope we will overcome in 1985. At present the computer prints only when all registrations are in. As a result we wait a whole season and are faced with a huge pile of your copies and ours to sort and distribute, a daunting and frustrating task as quite frequently some of the calves have already been sold. This coming season we hope to receive Certificates on a progressive basis — in a series of batches during the registration season. Naturally those who complete their returns early should be able to anticipate their documents back first. We will try to activate this anyway.

With the development of computers, which has been quite dramatic in the past few years, new systems are being constantly introduced and we are hopeful that before too long we will have an 'input' unit in the office which will allow us to punch (or type) our own information direct into the computer which will streamline our systems and give us greater control. At present all our documents are mailed to Wellington where the inputs are made by contract staff.

As we have stated in the past we are always ready to assist breeders with their computer returns. It is much better to contact us if you have a problem in the early stages, than leave things until they become really complicated.

## SALE DATES 1985

Our two Society sponsored sales next season will be held as follows:

SOUTH ISLAND	Thursday, 6th June Addington Showgrounds.
NORTH ISLAND	Tuesday, 18th June Palmerston North Showgrounds.

There will also be the normal Club Sales for which dates will be advised in due course.

## COMPUTER PEDIGREES

We are well aware that the pedigree information produced on some of our Registration Certificates is inadequate — often it shows a sire and dam only. This will progressively rectify on the dam side as generations build up. On the sire pedigree side however it is possible to 'build in' a pedigree. If for example you use your own herd sire or sires over your herd you can, at a reasonable cost, have full pedigrees entered into the computer simply by providing the details with your Calf Entry Sheets. This will mean your Certificates will be printed with your sire's full pedigree.

On the dam pedigree side if you are really stuck, we can provide you with a draft copy so you can identify the animals bloodline. This has more particular relevance to the newer breeder who 'buys in'.

## WHAT IS A UNIQUE ANIMAL NUMBER??

In the establishment of your tattoo or tag identification of your calves you follow a set sequence — each animal has a grade or purity letter, a year letter and then the animal or station number. For example AR6 would be a purebred, born in 1984 and number six is your sequence.

It is the animal or station number that should be unique — in simplicity only use a number once in each year's calf drop. The reason for this is that in a computer system there is an identification system that uses the animal number and the year as a key. AR6 for example becomes 6/84 in your herd within the computer system. It is obvious therefore if you have AR6, BR6 (seventh-eighth) and CR6 (three quarter) (using the same number for three different grades in your herd) your computer record will have three 6/84's which causes considerable confusion.

It is quite simple — allocate a number once only when identifying your calves in any one year.

## TATTOO YEAR LETTERS...

1982 = N

1983 = P

1984 = R

# VISIT TO AMERICA AND CANADA

(A contributed article by D. C. Carter of Manor Farm, Canterbury)

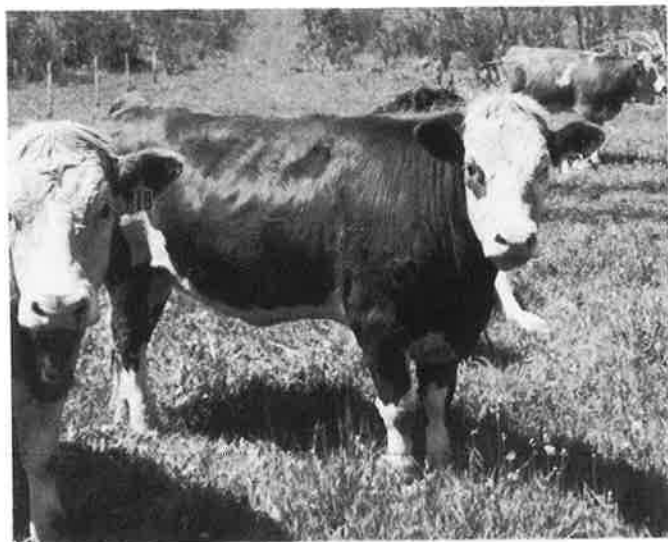


*American offices, Bozeman, Montana.*

Immediately after the New Zealand Simmental Sale Circuit, a party consisting of John and Star Absolom, Alan Perry, Woody Rouse and myself, commenced a rushed visit to North America to study other Simmental bloodlines. The timing was opportune, following closely after the Australian World Simmental Congress when so many useful contacts and friendships had been made.

Our first stop was Ron and Jane Bakers of Hermiston, Oregon. For those of you that attended the Sydney Congress, Ron had presented a paper titled 'Cross-breeding with Simmental in North America'.

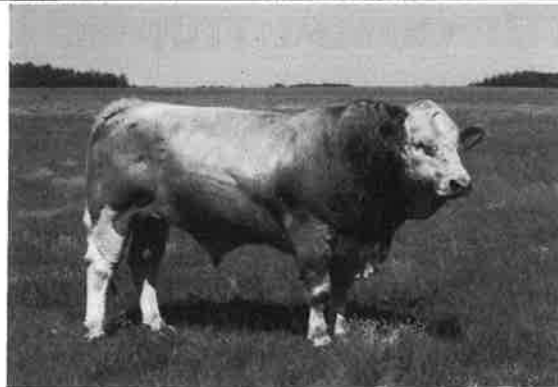
His property consists 6,000 acres but with 80% under irrigation using massive pivot spray irrigation systems. The whole area had been prior to the development of irrigation, a semi desert, with an annual rain-fall of 8 inches. Now crops such as potatoes, corn, lucerne and wheat prosper.



*Quality heifers on Gerry and Herme Kaumeyer's property.*

Ron has a herd of 1,300 cows, mainly Simmental, but including some Brahman in various stages of inter-crossing.

But of greatest interest on the property was our first look at a feedlot. Imagine 15,000 steer in an area of 30 acres!! Ron was producing for slaughter 750 steers per week that had resided in the feedlot for between four and six months, and been fed a mixture of grain, and potato waste. He was lucky enough to have the contract for waste from a neighbouring 'french fry' factory.



*A herd sire, "BAR 5".*

From Oregon we travelled via Salt Lake City to Bozeman, Montana, to the headquarters of the American Simmental Association to be entertained royally by the Executive Vice President, Earl Petersen, and his wife Jeannine. It was most enlightening to spend a day in Earl's office, talking to his staff of thirty-five and studying the various office systems that they have developed.

To give you an idea of the size of the American Association, compare their membership of 22,000, with ours of 350 or 900,000 registered cattle versus 20,000.

The Simmental breed has developed very rapidly in the States, to a stage of being the 4th most populous breed, with 86,000 registrations, and following only the Horned Hereford, Polled Hereford and Angus.

## CALGARY, CANADA

We then proceeded to Canada and our first stop was the Pioneer Simmental Stud situated 100km south of Calgary. This stud is owned by Gerry and Hermie Kaumeyer who toured New Zealand with the pre-Congress tour in March. Their farm consists of 2,000 acres of lovely rolling country backing onto a forestry reserve. The herd comprised 100 fullblood Simmental cows, which were very impressive although Alan Perry was equally impressed by the wild deer that galloped across the paddocks in front of the truck.



We then called at Gordy and Kathy Westley's property of 1,500 acres of flat irrigation country, where he farms an elite herd of 120 cows. Gordy owns the very impressive stud sire, Bar 5 Dignified, so we were able to see numerous progeny of this bull.





*Mel Wolfe's property Manitoba. Mel visited New Zealand two years ago.*

We then called briefly at the Canadian Simmental Association's office in Calgary, and met their General Manager, Jim MacKay and his staff of 10. The Canadian Association currently serves the needs of 5,000 active members.

Next stop was a bull collecting centre, Western Breeders on the outskirts of Calgary. Unfortunately most of the bulls leave the centre at the time that we visited for natural mating, so stocks were depleted. However we were able to see eight Simmentals. As yet only 2 are eligible for New Zealand.

Before leaving Alberta we made a brief visit to the stud of Stan and Frances Church, which was within a few miles of the A. I. Centre. This stud is run on smaller lines than some, but with very high quality stock. Stan supplemented his income by practicing law in Calgary, so it was Frances who showed us the stud. A valued part of her approach was the honest revelations of all aspects of the stud, both good and bad.

Our final call was 500 miles due east of Calgary to Bar 5 Simmental Stud, situated at Brandon, in the province of Manitoba. This stud is probably one of the world's largest, mating 400 pure cows each year. The farm is 4,000 acres of light sandy loam, intensively irrigated and employing a total staff of eight people. The most impressive aspect of the stud was the management systems that had been developed to operate a stud of this size.

This itinerary was completed in eight days, so in retrospect was too rushed. However, the experience was well worthwhile. I returned home convinced that the New Zealand Simmental is on a very firm base. Whilst some very good stock was observed in North America, such stock may not be totally suited to our environments, and methods of farming. I believe that each country is developing its own type of Simmental, and that the New Zealand Simmental is as good as any and can stand proudly in amongst the other types.

## A RECORD OF PERFORMANCE



*Jim Sutton.*

In our last issue we recorded the result of the Council Elections and Jim Sutton of Waimate, a Councillor for nine years, was narrowly defeated in a very even poll. We were sorry to lose this enthusiastic member of the administration but we were also aware that we might lose him anyway. As it turned out the prediction was a little earlier than anticipated! Jim, at his second attempt as Labour candidate for Waitaki Electorate was successful and now treads the corridors of power in the 'Beehive' along with his brother Bill, who was the successful candidate for Hawkes Bay.

We congratulate him on his success and wish him well in his endeavours. If his application to his political career is similar to that of the other things he has undertaken most certainly we will see him with a portfolio under his 'wing' before long.



**Guthreys**

## A.I. TRAINING COURSES

Designed to train farmers to inseminate their own cows.

Courses held at Christchurch during Autumn/Winter 1985.

Write for further information to:  
**GUTHREY BREEDING SERVICES,  
P.O. Box 97, Kaiapoi or  
PHONE KAIAPOI 6175**

Please send information to:

Name: \_\_\_\_\_

Address: \_\_\_\_\_

# simbeef

symbol of progress

## LATE FEES....

## REGISTRATIONS

**Any animal (born 1984) not registered by the 31st. JULY 1985 will be charged at double fee.**

**DON'T BE LATE**

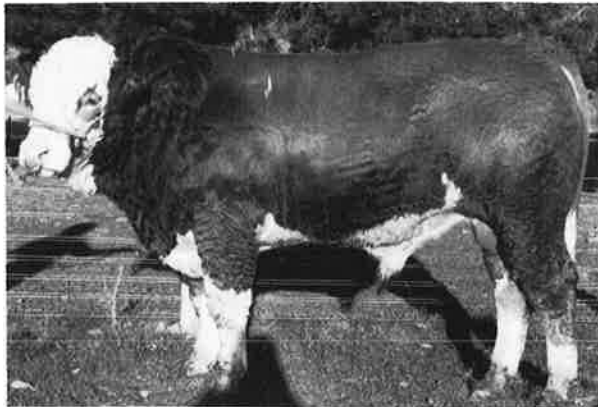
# Sales

## WHAT MAKES THE SIMMENTAL SELL?

An analysis of this seasons weaner sales and the prices realised give an answer. Twenty eight known markets throughout the country recorded prices in excess of \$400 with a top of \$495. In many other Simmental cross weaners made slightly less to top the sales at a premium that ranged as high as \$100 above other Breeds. It is not the first season such premiums have been realised. Coupled with carcass competition success and premiums being paid by the local trade for Simmental cross steers, the Breed has made a strong impact.

Three recent major sales reinforce the statement made. 131 Bulls were sold for a gross of \$586,000 giving an average of over \$4,000 per head.

At Christchurch the annual South Island Sale offered 25 Bulls. Top prices were a record, with \$17,500 being paid for a top flight 20 month old Bull offered on account of W.A. Rouse of Five Rivers, Southland which was purchased by P. Newman of Otorahanga.



*Woody Rouse's top priced bull at the South Island Sale.*

Another of similar age was sold by D.S. Crosson of Gordons Valley, Timaru for \$17,000 and was purchased in conjunction with American interests by G. Bain of North Otago. This Bull will remain in New Zealand but semen will be exported to U.S.A. Five other Bulls realised over \$10,000, and another five between \$5,000 and \$8,000. Average for the Sale was \$5,063.



*Glenis and Tony Thompson's top priced North Island bull.  
(Photo courtesy Country Life).*

The North Island Sale held in Palmerston North was equally successful with 31 Bulls being offered. Top price was \$17,000 for a 20 month old Bull sold by A.H. & G.M. Thompson of Waipukurau, to D. & N. Bates of Wanganui. J.P. & P. Scott of Cambridge sold the next highest priced entry at \$13,000 which was purchased by G. Black of Waimate in the South Island. Again prices from \$5,000 to \$10,000 were not uncommon. This Sale averaged \$5,030. The average for both the South and North Island Sales was approximately double that of 1983.



*Star and John Absolom with their top priced bull.*

Following the Palmerston North Sale the second Annual Bull Sale of J.P. & S. Absolom's Rissington Station, near Napier was held. With sixty five entries the Sale followed a similar pattern to the 1983 fixture offering a proportion of purebreds as well as graded commercial sires. In little over an hour the offering was totally cleared at an average of \$3,600 per head. The first lot offered was a 3 year old stud sire of excellent quality and this realised \$11,500 and was purchased by S. & G. Timperley of Northland. The majority of the catalogue went to Commercial Breeders in Gisborne and northern Hawkes Bay.

A number of area or district sales were also held this year and their success was similar, catering as an outlet for breeders in their own areas. South Canterbury ran their first sale of 'run bulls' which resulted in almost a complete clearance.

The Sales have produced a number of new or first time buyers spreading already wide usage of Simmental bulls in the commercial Society.

In hindsight the Simmental breed has enjoyed a selling season above most other breeds.

---

### SOUTHERN DISTRICT SIMMENTAL CLUB RAFFLE.

At the time of the South Island Sale the Club raffled two mural type pictures. Winners were Ken Bain of Outram and Peter Linton of Christchurch.

---

## OVUM TRANSPLANTS — INSPECTION OF DOORS

Some years ago when we set up the Regulations for Ovum Transplants we laid down, for good reasons, the requirement that all donor animals (those from which the fertilised ova was removed for transplant) were subject to inspection before going into the transplant centre or must have passed inspection during the previous twelve months (Refer Regulation 19). At the time this regulation was implemented a large number of transplants were being undertaken at a number of centres throughout the country to satisfy the strong demand for purebred stock. Inspections were brought in as a protection against the proliferation of progeny from donors that may have been sub-standard or carried undesirable traits.

The situation has now changed greatly and only a very small number of transplants are carried out annually on females that are of top quality. Mostly these are older proven cows who are reaching the end of their breeding life and breeders wish to obtain an expansion of the bloodline.

At a meeting of Council in August it was resolved that the requirement for inspections of donor animals would be deleted.

We do however stress with breeders to be selective in what they put forward for transplant. There is little point in going to the expense of producing calves by transplant from anything other than a top breeding female.

## OVUM TRANSPLANTS — BLOOD TYPING

While blood-typing of calves from Ovum Transplant is not required within New Zealand it may be required if an animal is exported.

Breeders putting forward donors for transplant should have a blood type taken at the time the operation is done. The sire used should also be blood typed. These requirements are still enforced under Regulation 19 section 8 and 9.

## REVISION OF TRANSFER SYSTEM

When you sell an animal with transfer we ask you to please note the changes we have introduced in the transfer system. Up until now we have had a complicated system involving three copies of the form, both costly and confusing.

Our new system involves one copy only, originated by the seller which he or she completes and returns direct to the office with the animal's Certificate of Registration and A.I. dockets as relevant. The office will complete the transaction for the seller and the purchaser.

The next time you sell a transferred animal take time to read the instructions on the new form. We are sure you will find it much more simple as it certainly is for the office.

# LEVELS GENTECH

**EMBRYO TRANSPLANT SPECIALISTS**  
**Livestock Breeding & Marketing Consultants**

*We are pleased to announce the formation of our new company to service cattle breeders with embryo transfer requirements.*

- \* We offer a non surgical service performed ON FARM OR ON CENTRE.
- \* On farm freezing of embryos.
- \* Highly experienced veterinarians and back up services available
- \* Established international affiliations for import and export of embryos.
- \* We strongly recommend that all Stud and performance recorded cattle breeders utilise their elite cows.

**ALL ENQUIRIES MOST WELCOME**

Technical Director: Neil Sanderson  
Phone Brightwater (05243) 538  
Laboratory and Field Services: Lindsay Frazer  
Phone Rangiora (0502) 7438 office 6145 Pvte.

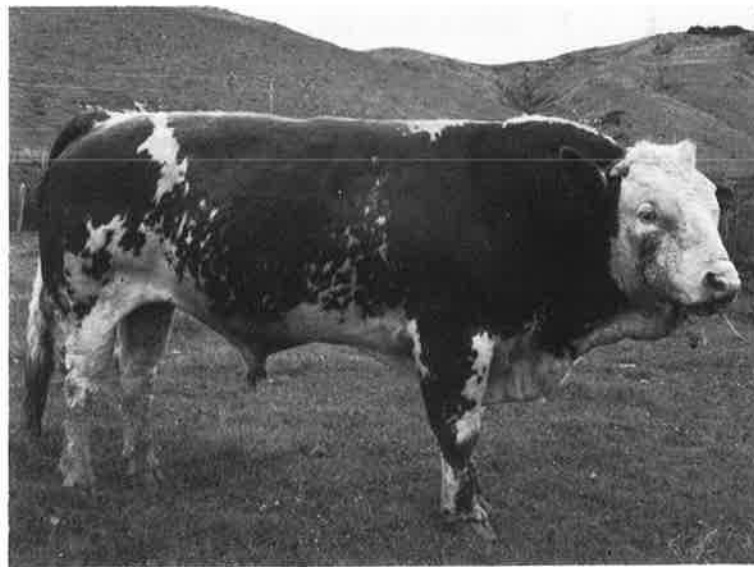
## CARCASE COMPETITIONS

We have an increasing number of cattle entered in carcass competitions which generally embrace both 'hoof and hooks'. It is little effort but good reward to tag your entries Simbeef. Next time you enter an animal make sure it has the Simmental 'trade mark'.



*Argentinian visitor to Canterbury Fernando Fourcade, Vice President of the Argentinian Simmental Association pictured with Rodney Cox.*

## HERD SIRES



# MAJOR

## Avon Park Simme

### SIR AVON PARK I

Junior Champion Bull  
church Royal Show 19  
'Winkie' needs no intro  
We will be offering bull  
by him at the Sale in C  
churh and also private

### MALVERN DO

### LEONARDC

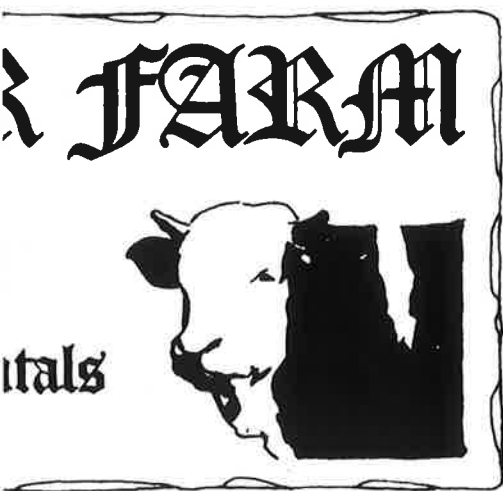
'Nardy's' progeny are e  
long but balanced cattl  
first of his sons will be  
for private sale this sea

### AVON PARK MAJ

Supreme Champion Ch  
church Show 1983.

Majestic's first crop are  
the ground. We are ver  
with them.

Come and inspect them  
yourself.



# FOR SALE AVON PARK PETAL



**AVON PARK PETAL**  
**Born 27.9.83**

Malvern Downs  
Leonardo

Scottish Senator

Congeith Edith

Stuartslaw  
Daffodil

Scottish Neff

Molly

Birth Weight: 48 Kg. Weaning Weight: 294 Kg.  
Yearling Weight: 350 Kg.

This heifer was the 3rd highest ranking heifer in our herd.

For the National South Island Simmental Sale, we will be offering  
approximately 4 Bulls plus PETAL — a top female.

**David and Melinda Carter**  
**Manor Farm, No 1 R.D. Lyttelton**  
**(03) 299-731 or Governors Bay 731**



# Shows

## SHOW JUDGING CLINICS

In October the New Zealand Hereford Breeders' Society staged a series of four judging clinics in New Zealand. International Show Judge and Hereford breeder, Don Anderson of Queensland was brought to New Zealand by the Hereford Society to give practical demonstrations on preparation, handling, showing and judging. The Hereford Society most generously invited other beef breed Societies to participate in these clinics which were very well attended by a cross section of breeders. A large number of Simmental breeders attended. Don Anderson presented an extremely well balanced programme covering promotion, communication and people followed by practical demonstrations of preparation, handling, leading and showing. A person of vast experience and a fluent speaker he spoke in terms of common sense stockmanship and individual promotion through showing. There would be few indeed who attended his four clinics that came away without some new knowledge and enthusiasm. Some of the points stressed were that there is always room for improvement in the stock we breed — nothing is static. There should be no patent formulas for preparation — the animal, bred and fed in a natural manner, should, without artificial aids, be a top animal in his own right. The relationship between exhibitor and animal should be one of co-operation and not dominance. To succeed one must always take a positive attitude.

The New Zealand Hereford Society and Don Anderson are to be congratulated on their presentation. Not only did they give their own breeders a unique opportunity to take part in a very worthwhile exercise, they presented a project of benefit to our beef Societies of New Zealand.



'Untitled'.

## SHOWS

Already we have made impact in the annual Shows held throughout the country.

At Gisborne, John and Star Absolom won the Meat & Wool Cup for the fourth consecutive year this year with Rissington Monitor.

At Hawkes Bay Simmentals had yet another barrel of success winning the Meat & Wool Cup, (Rissington Monitor) the Junior Yearling all breeds bull class (Robin Lowry's yearling bull from Irish Empress by LJB Jade) and the All Breeds Export Class (Tony Thompson from Waipukurau with an excellent cow and calf). This is the second consecutive year Simmentals have won all three inter-breed classes. A great effort by an enthusiastic group of breeders who make this possible.

At Hamilton we also made our mark. Neil Barnett of Arohena won the Meat & Wool Cup with a yearling bull he purchased some months ago from G. D. Locke. This bull was judged top animal at the Waikato Club field-day held at the time of our overseas delegates tour of New Zealand in April.

We have the Royal coming up at the beginning of December and are hopeful that the breed will be shown with success in Southland. Entries are anticipated to be high with quite a contingent going down from the Canterbury area.

Every now and again we make a sortie into a new area to put the breed before the public and this year a small exhibition of cattle was mounted at the Nelson Show. There are not a great number of members in Marlborough and Nelson but interest is increasing and Rupert Martin who used to manage Transport Nelson's large herd has done much to promote the breed. Through him and the Nelson A. & P. Association who gave us 'gratis' space we were able to set up a small centre and exhibition of three very good yearling Simmental-cross steers. These created considerable interest and we had constant visitors throughout the Show and as a result have several potential new members and people interested from a commercial point of view. We were also pleased to see and receive help from some of Marlborough members.

## NORTHLAND

A small contingent of breeders in the Northland area put animals forward for shows at Whangarei. Jim Houlbrooke, the Sloanes, Timperleys and Geoff Palmer entered animals and Stan Timperley won second place in the All Breeds with his yearling bull. More recently a sortie was made to the Show at Waimate North (away up near the top!) where Stan won the All Breeds two year competition with the Sloanes a little behind for second.

We are pleased to record Geoff Palmer's attendance at Whangarei. He has had a spell of ill health and it is nice to know he feels fit enough to participate again. We hope you feel a lot better Geoff.

## HAWKES BAY SHOW RESULT

Champion and Reserve Senior Female

Glen Anthony Stud

Two year old heifer

1st J. P. Absolom

2nd Pukekohu Simmentals

One year old heifer

1st, 2nd and 3rd Glen Anthony Stud

Champion and Reserve Champion Female

Glen Anthony Stud

Pen of two year old yearling heifers.

Glen Anthony Stud

Champion Senior Bull

J. P. Absolom

Reserve Senior Bull

Glen Anthony Stud

Yearling Bull

1st Pukekohu Simmentals

2nd N. J. Barnett

3rd J. P. Absolom

Junior Champion Bull

Pukekohu Simmentals

Reserve Junior

N. J. Barnett

Yearling Bull and Yearling Heifer

1st Glen Anthony Stud

2nd Glen Anthony Stud

3rd Pukekohu Simmentals

Champion Group

1st Glen Anthony Stud

2nd J. P. Absolom

Sire Progeny Class

Glen Anthony Stud

Performance Class

1st Pukekohu Simmentals

2nd Glen Anthony Stud

3rd Glen Anthony Stud

Twenty-eight Simmentals faced the judge Mr. Pat Cooper, Chief Auctioneer for Wrightson NMA. There was a new breeder Tim Murphy from Waipukurau exhibiting for the first time. The cattle were presented in very good order and again Simmentals as a breed looked the part.

John Absolom's Champion bull Rissington Monitor went on to win the Meat & Wool Cup from the South Devon bull.

Pukekohu Simmental's Junior bull Prince won the All Breeds Yearling Class and Glen Anthony Stud's cow Glen Anthony Limelight took the Export Cow and Calf Class thus giving the breed a clean sweep in the inter-breed classes for the second year in a row.

## CATTLE STANDARD — SALES

Last year we introduced under 'Conditions of Sale' a section which prohibited the entry of any animal that has had its feet trimmed. Such a move is for very logical reasons and we are sure virtually all our breeders go along with it. At a Sales Committee Meeting earlier in the year it was put forward that vendors be encouraged to give guarantee of feet for up to two years for the animals they sell. Provision for this will be included in the Sale Entry Form for 1985 — such guarantee will be voluntary but is to be commended.

## WAIKATO SHOW (HAMILTON)

A great Show for Simmentals. The breed in 'All breeds' won:

★ Meat & Wool Cup

★ Best Yearling Heifer

★ Best Yearling Bull

★ Founders Cup (Bull and three females)

A clean sweep for Simmentals.

Champion Bull (Meat & Wool Cup) 'Lochamday Pace', N. J. Barnett, Reserve Champion Bull 'Singing Hills Bee Jay', B. B. Anderson.

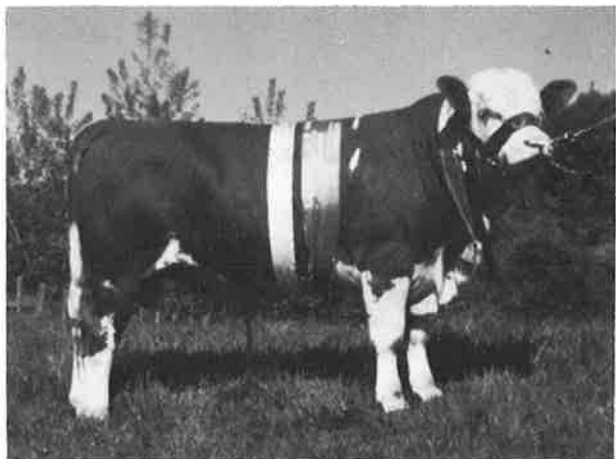
Champion Female and Junior Female 'Emerald Dale Eileen', H. T. Marshall.

Reserve Champion Female 'Emerald Dale Nita', H. T. Marshall.

Junior Bull 'Ohu Prince', G. G. Pearce. Bull/Heifer Pair, W. R. & G. E. Eccles.

The Founders Cup team was made by cattle exhibited by N. J. Barnett, H. T. Marshall and Mrs J. Arbon.

As well as the classes the Club set up a small information stall for interested people. Well done Waikato Club!



*N.J. Barnett's young Champion Bull — strong winner at Hamilton.*

## POVERTY BAY SHOW RESULTS

Champion Bull

J. P. Absolom

Reserve Champion Bull

Pukekohu Simmentals

Yearling Bull

1st Pukekohu Simmentals

2nd Arahi Farm

3rd T. J. Murphy

Champion Female

Pukekohu Simmentals

Reserve Champion Female

J. P. Absolom

Yearling Heifer

1st Arahi Farm

2nd Arahi Farm

3rd Pukekohu Simmentals

Rissington Monitor won the Meat & Wool Cup comprehensively and was the 4th win in a row for John and Star Absolom.

# Canterbury Show



Colin Patterson receives the Pendeen Trophy for his Champion cow from the President's wife, Mrs Jill Lowry.



Rodney Cox holds his Supreme Champion Simmental 'Rissington Major'. With him is Mrs Jocelyn Hall who presented the Sash and the Judge Alan Perry.



Rodney Cox also won the Harlau Trophy for Senior Champion bull, presented by Mrs Clare Perry, wife of the Judge.



Colin Patterson receives the Merck, Sharp & Dohme Salver from Mrs Gay Cox for his Junior Champion Bull.



Colin does it again with his Junior Champion Female! Murray White of Coopers Animal Health (NZ) Ltd., who donated the prize presents it.



A strong line-up in the heifer class.



Tony Partridge of Ladbrooks receives the Hardsman Award from Club President, Neil Oliver.



Patterson line up - winner of Group Class. (Also individual winners of three Championships) - it certainly was Colin's day.

## CANTERBURY SHOW

Held in early November, Canterbury again hosted a most successful show. Simmental entries were high with twenty-five adults and five calves. Supreme Championship went to 'Rissington Major' exhibited by R. N. S. Cox of The Levels. This very good three year old bull was placed third in the Meat & Wool Cup and with a couple of less conservative judges could well have won it — we will do it one day.

Results of classes were as follows:

Class 473 Cow and calf over 3 years.

1st 'Winfield Libby', sire Winfield Goliath, O. J. Osborne.

Class 474 Cow 3 years.

1st 'Springbrook Mandy' (with twin calves) sire Siegfried, C. J. Patterson.

Class 475 Heifer 2 years.

1st 'Winfield Nellie' sire Marzou, O. J. Osborne.

2nd 'Winfield Nutmeg' sire Pilz, O. J. Osborne.

Class 476 Senior yearling heifer.

1st 'Ladburn Pelly' sire Canterbury Ceasar, Mrs L. A. Partridge.

2nd 'Wilderness Penelope', sire WBL Transmitter, G. H. Habberjam.

3rd 'Ladburn Prudence', sire Canterbury Ceasar, A. A. T. Partridge.

Class 477 Junior yearling heifer.

1st 'Springbrook Pearl', sire Heywood Esquire, C. J. Patterson.

2nd 'Avonpark Posy Girl', sire Sir Avon Park Extra, D. C. & M. Carter.

3rd 'Marshlaw Penny', sire Polonious, C. J. Patterson.

4th 'Avon Park Panache', sire Scottish Herod, D. C. & M. Carter.

5th 'Wilderness Polly', sire Heywood Esquire, G. H. Habberjam.

Class 478 Pair Heifers.

1st D. C. & M. Carter

2nd A. A. T. Partridge

3rd G. H. Habberjam

Class 480 Senior Bull.

1st 'Rissington Major', sire Rissington Extra, R. N. S. Cox.

Class 481 Bull 2 years.

1st 'Marshlaw Neptune', sire Canterbury Duncan, D. M. Elliot.

Class 482 Senior Yearling Bull

1st 'Ladburn Pontiac', sire Canterbury Churchill, A. A. T. Partridge.

2nd 'Wilderness Pierre', sire Heywood Esquire, G. H. Habberjam.

3rd 'Winfield Pilot', sire Scottish Neff, O. J. Osborne.

Class 483 Junior Yearling Bull.

1st 'Springbrook Lancelot', sire Pendeen Lancelot, C. J. Patterson.

2nd 'Marshlaw Pilot', sire Scottish Big Michael, D. M. Elliot.

3rd 'Avon Park Proud flesh', sire Avon Park Extra, D. C. & M. Carter.

Class 484 Bull and three females.

C. J. Patterson.

## CHAMPIONSHIPS

Senior Champion Cow

Pendeen Trophy 'Springbrook Mandy', C. J. Patterson.

Reserve Champion Cow 'Winfield Libby', O. J. Osborne.

Champion Heifer

Coopers Animal Health Prize 'Springbrook Pearl', C. J. Patterson.

Reserve Champion Heifer 'Ladburn Pelly', Mrs L. A. Partridge.

Senior Champion Bull

Supreme Champion Simmental

Harlau Trophy 'Rissington Major', R. N. S. Cox.

Reserve Champion Bull 'Marshlaw Neptune', D. M. Elliot.

Junior Champion Bull

Merck, Sharp & Dohme Trophy 'Springbrook Sir Lancelot', C. J. Patterson.

Reserve Junior Bull 'Ladburn Pontiac', A. A. T. Partridge.

Herdsmen Trophy A. A. T. Partridge.

## ELLESMERE SHOW (CANTERBURY)

Simmentals came out in strength at Leeston for the Ellesmere Show — one of the largest provincial one day shows in the country. The breed put forward twenty-one entries. The cow class was won by 'Springbrook Mandy', C. S. Patterson.

Heifer Class 'Ladburn Pelly', Mrs L. A. Partridge.  
Yearling Bull Class 'Springbrook Sir Lancelot', C. J. Patterson.

Group Class C. S. Patterson. Junior Bull

All Breeds C. S. Patterson.



Colin Patterson with his Junior All Breeds Champion at Ellesmere.  
Peter Linton who judged holds the Challenge Shield.

# simbeef

symbol of progress

# WAIMIRO SIMMENTALS

**(A.B. PERRY)  
HERD 294**



**HERD SIRE 'EASTDOME NORTON' BY  
'BALIG AGENT'**

**(Born 13.9.82)**

**Purchased at South Island Sale 1984**

Rising 2 year old Bulls will be offered at the 1985 North Island Sale and available on the property. These Bulls are by (Canadian) **'EXTRA'** and **'WAIMIRO MOSES'** (Polled) who was sired by **'ARGOS'**.

The **WAIMIRO STUD** is introducing new bloodlines this season from overseas through ovum transplant.

*Enquiries and Inspection Welcome.*

Contact Alan Perry

Phone: Rongotea (063 248) 772

or write to: Penny Road 9 R.D. Palmerston North



In our last issue we covered the results of our autumn weaner sales — they were fantastic! Most members (and many others) will have seen our full page advertisement in the Southerner/Northerner farming paper. In summary we topped twenty-eight major Sales with a top price of \$485. Please continue to keep us advised of your success in the weaner and the fat steer markets.

Weaners become 'fatteners' and in October we saw the end result of one group through the Addington Saleyards at Christchurch when ten big Simbeef steers were sold by Mr L. Wittie of Teddington. The top price, an all time Addington record was \$1,620 with all the others making over a \$1,000. On the hooks these cattle with the exception of one all graded P1.

Addington also broke two other records in October. A nine year old cow sold for \$1,020, marketed by Warren and Barbara Harwood, of Rangiora and a heifer made \$798 sold by Max Manson of Motukarara (near Christchurch). At the time of writing we hold record prices for all three divisions.

Further North at Fordell (Wanganui) Des and Nan Bates created some interest when they sold thirty-four yearling Simbeef steers at prices ranging from \$520 to \$580. (Traditional two year old steers ranged from \$448 to \$528).

In the Manawatu at Fielding Simbeef yearling steers topped the market at \$647, believed to be a yet another record. These same animals were top price at the autumn weaner sales in Feilding. The second cut of the same entry brought \$600. The next highest prices for yearlings were \$542 and \$525 — a premium for Simbeef of \$105 for the top pen.

These steers were sold by N. K. Weir of Mt. Biggs near Feilding, who is a commercial breeder.

## SIMBEEF

I was recently invited to write an article on 'Simbeef' for the Australian magazine; our project has succeeded ahead of theirs. When I sat down and thought about it and eventually wrote about it, it was an exercise that highlighted just what it was planned to be — a commercial extension of our pedigree system and it works.

As the breed has progressed and crossbred cattle have become more numerous so has the recognition of Simmental-cross animals but that distinctive yellow tag still 'drives the spike' in what they are. A large majority of the commercial cattle that are marketed are ear tagged in some form or other so to use a 'Simbeef' tag really presents no problem.

If you sell commercial Simbeef weaners tag them as such, it is a cheap promotion for you and the breed. Likewise if you enter a steer in a carcass competition make sure it is tagged.

If you sell a bull to a commercial breeder sell him Simbeef as well, he will reap a premium. Where we are notified of private bull sales we write to the purchaser and promote the idea.

By promotion of the commercial situation in our crossbred cattle you are promoting the product which you as a pedigree breeder are producing.

'Marketing by identification' is a unique system in the beef industry of this country — we introduced it, let's use it to advantage and the advantage of the commercial breeder.

## HOOF & HOOKS — HAWERA (Taranaki)

In an area where the acceptance of Simmentals has been relatively slow, the breed made a great impact in November this year.

Twelve of the fifty plus entries in the annual Chiller Beef Competition were Simmental cross and they really stole the show!

On the hoof: 2 year class 1st, 2nd and 3rd.

3 year class 1st and 3rd.

On the hooks: 2 year class 1st, 2nd and 3rd.

3 years 1st and overall champion.

Mrs M. Lane of Okato (a registered breeder) won the Championship closely followed by last year's winner, Rex Brogden who was only a few points behind.

## RALGRO SUCCESS

The result of the 1984 Ralgro weaner steer competitions has been a great Simmental occasion.

A total of seventy one Sales were held throughout New Zealand and twenty five Sales exceeded \$400 per head and within this group Simmental cross weaners were dominant accounting for 50% of the pens.

Simmental cross accounted for nine out of the twelve top priced pens and in many cases were second by only an odd dollar.

An analysis of the top twelve pens is as follows:

SALE	PRICE	BREED	VENDOR
Owaka	\$475	Simbeef	W. Leslie
Studholme	\$467	Simbeef	B. Hurst
Addington	\$460	Hereford/ Angus	A. Hutchinson
Castlerock	\$460	Charolais	M. A. Allen
N.I. Rangiora	\$455	Simbeef	R. J. Makgill
N.I. Feilding	\$447	Simbeef	H. L. McIntyre
N.I. East Coast	\$436	Simbeef	C. & S. Baker
N.I. Taihape	\$435	Simbeef	J. Russell
N.I. Waipukurau	\$435	Simbeef	M. M. Dearden
N.I. Kauroa	\$433	Hereford/ Angus	L. G. Hayes
N.I. Hastings	\$430	Simbeef	D. Brownrigg
N.I. Taihape	\$430	Simbeef	A. Williams

We congratulate our vendors on their success.

## SIMBEEF TAGS

With yet another weaner sale season rapidly approaching we look forward to the continuing success we have had with our Simbeef calves. Each vendor can assist in the promotion of Simbeef by tagging those calves they put in the weaner sales with our distinctive yellow Simbeef tags. Weaners go on to fatteners and once identified as Simbeef cattle they are easily recognized. If you have a friend or neighbour breeding commercial Simmental cross cattle encourage him to use our tags. Simbeef has proved a successful promotion — let's keep it going.

# Miscellaneous

## NORTH ISLAND SIMMENTAL TECHNICAL FIELD DAY

ALL WELCOME . . . (South Islanders too!)

THURSDAY 28th FEBRUARY 1985

N. J. BARNETT'S, PROPERTY, AROHENA, EAST OF TE AWAMUTU

**PROGRAMME  
WILL INCLUDE:**

1. Tattooing of Animals
2. Recording and Identification Procedures
3. Slides and Discussion on Carcase Evaluation
4. Inspection Standards, Feet etc.
5. Modern Computerised Weighing
6. Performance Recording — How to use it
7. Computer Demonstration
8. Sale & Show Standards — Preparation

All Councillors will be present and also our Secretary/Manager

(NOTE: It is intended to repeat a similar type of programme in the South Island at a central point later in 1985.)

Further Details will be circulated closer to the time of the Field Day

## PRODUCTION OF SUNDRY ITEMS

From time to time individuals and Clubs decide they have use for various items in their activities. These cover a wide range and can be hats, monograms, signs, T shirts or whatever.

When a suggestion is made for such a project it would be prudent to see if the item under consideration has application outside the immediate area. Some could find general acceptance amongst the membership or have use at other venues. There is also the question of design and production — this should be carefully considered. Where the Society symbol is used it should be reproduced exactly and precisely. A poor reproduction of our symbol can be disastrous and I know from experience it is extremely difficult to reproduce 'freehand' (my wife who is a highly qualified design artist will not attempt it). There are signwriters and design artists who have equipment to reproduce a symbol exactly and only they should be used. To make the point, the production of our screen gatesign was made to overcome the difficulty of having our symbol reproduced by the average signwriter.

In general if you want to produce an item in your own area for Club use or resale we will be happy to give you a hand with design and production of the artwork from which it is produced — the item could be applicable to other areas as well and quantity production cuts costs. By careful design you introduce a professional production.

One other point is signwriting. Where this is originated make sure it is well produced, clearly lettered and brief. Nobody will stop and read a signboard with a galaxy of words — have a look next time you are at a Show or a Fair.

There are 'backyard' signwriters about and they produce a 'backyard job'. Signwriting is a highly skilled profession and if you are getting a message across to the public at large it should have a professional image.

The purpose of what is written in the foregoing is not an attempt to stifle your originality or enthusiasm. We urge you to promote and welcome your ideas. But please ensure that what you do is done with some finesse.

## WHAT HAPPENS TO THE OLDER BULL?

On most properties the resident herd sire has a limited use life as he becomes involved with his own progeny after a few years and a new bloodline is required.

Quite frequently I am asked if there is a demand for these older bulls. If they are sound and in good order it seems a pity to put them in the works. In most cases they are of good genetic background and still have useful years ahead of them.

There are people about who are prepared to take an older and proven bull — breeders may do an A.I. programme and require a follow-up sire or they may use them over commercial cows.

Alert your agents if you have such a bull to dispose of and he is sound (most important). At a reasonable price he will make a worthwhile contribution to his replacement.

# Miscellaneous

## NEW MEMBERS

This year we have received a most encouraging increase in membership with new herds being established in districts throughout the country. We welcome new members to the Society and trust they will find the same success with their cattle that others have.

The requirements of membership initially appear a bit daunting but once the system is going it is a relatively simple procedure based on the careful retention of records. If a sound system is set up and maintained the completion of Society documents is not hard to do.

The staff at the office all have experience gained over a long time in every aspect of the job and will be pleased to assist anyone with a problem or who is at all unsure of what to do. At present we are compiling a 'dossier' of procedures which is available to anyone who would like it — this covers sales, transfers purchases, tattooing etc. Eventually we will expand to make this up into a reference manual which will be sent to each member.

We suggest to new members that they make an effort to become involved in their local provincial Club who will hold field days and events during the year. This enables you to meet other members, swap ideas and get some idea of what goes on in your own district.

Members are encouraged to visit our office as they are able — you will be most welcome and we will be pleased to show you what we do and how we handle and process your records. If you are in Christchurch and would like to call and see us please do so.

## EQUIPMENT, SIGNS, BANNERS

Over the years we have built up quite a collection of bits and pieces that are used at Shows, Sales and Field Days. Some is Society owned, based at the office, and other is held by Clubs. Most of this gear has a fairly high cost factor and is for continued use, where a Club has equipment for display use or uses Society equipment we ask that care is exercised using, storing or dispatching it. Signs that are held for re-use should be kept flat and dry and odd items such as flag poles pipes etc., stored in an area where they cannot 'walk'. In one area, that shall be nameless, quite a quantity of pipework disappeared from a public facility in which it was stored resulting in costly replacement — unnecessary expense.

We have, based in the office, various signboards, flags and a banner which are for use at Shows and Sales etc. If you request them please take special care of them and ensure they are packed carefully and returned as soon as they have been utilised to the office, or inform the office who has got them if they have been sent on to another area. It is difficult and frustrating to try and locate 'missing' equipment a few months after it was last used. With flags, (and the set we have is worth about \$800) if you use them in a public area take them down at night. We had several vandalised and stolen at one Show a few years ago just because they were left on the poles overnight.

It is your equipment for your use so please look after it.

## EAST DOME STUD

(Herd No. 901)



A selection of young stock available this season. Inquiries and Inspection Welcome  
**W.A. ROUSE, EAST DOME, FIVE RIVERS, R.D. 3, LUMSDEN**  
**PHONE LUMSDEN 86R.**

# Miscellaneous

## NEW ZEALAND FIELDDAYS

The Waikato and Districts Club set up an attractive display at the New Zealand Fielddays in June. Their theme was 'Race Ahead With Simmental' and featured 'winners' in the form of 'Irish Empress' and her calf (the duchess of our female herds!) and a very sporty Audi Quattro car. Manned by Club Members, the stand received continued interest throughout the three days of the Fielddays and proved a good promotional effort, most attractively done.



*Attractive display at the Fielddays.*



## CHRISTMAS GREETINGS

To our members, wives and families and all those other people with whom we have association during the year, may we take this opportunity of saying thank you for your co-operation, help and hospitality during the year.

Every good wish to you all for a Happy Christmas and a successful 1985 from those at the Society Office.

*Jan Johnstone*

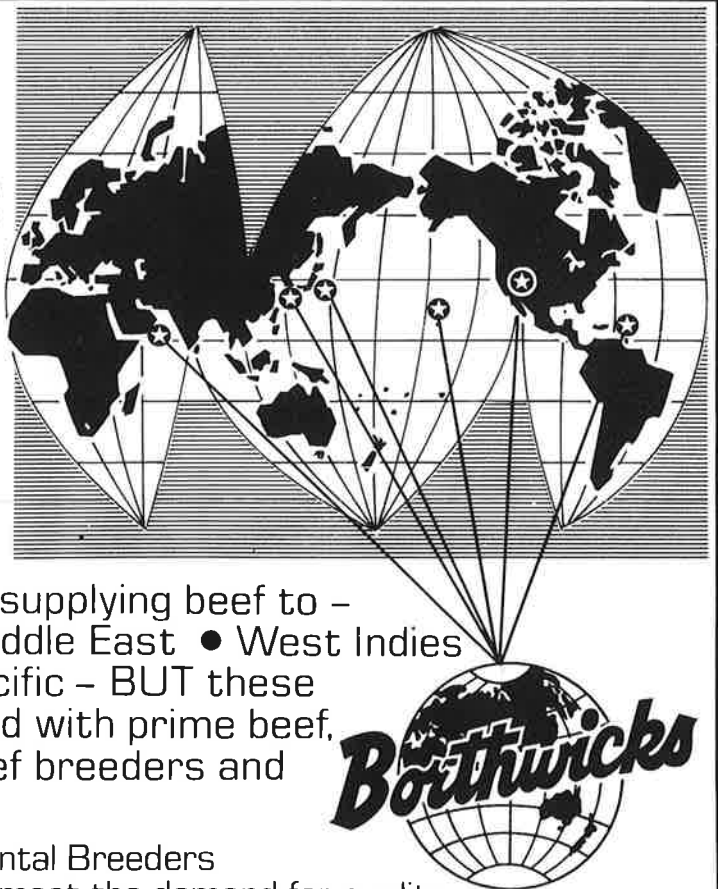
*Ann Joyce*

*Yvonne Kingsland*

## There is a World-Wide demand for PRIME BEEF

BORTHWICKS are currently supplying beef to –  
• The United States • The Middle East • West Indies  
• Japan • Korea • South Pacific – BUT these  
markets are still undersupplied with prime beef,  
so Borthwicks commends beef breeders and  
their aim for excellence.

Proud to be associated with Simmental Breeders  
One of the breeds most suitable to meet the demand for quality.

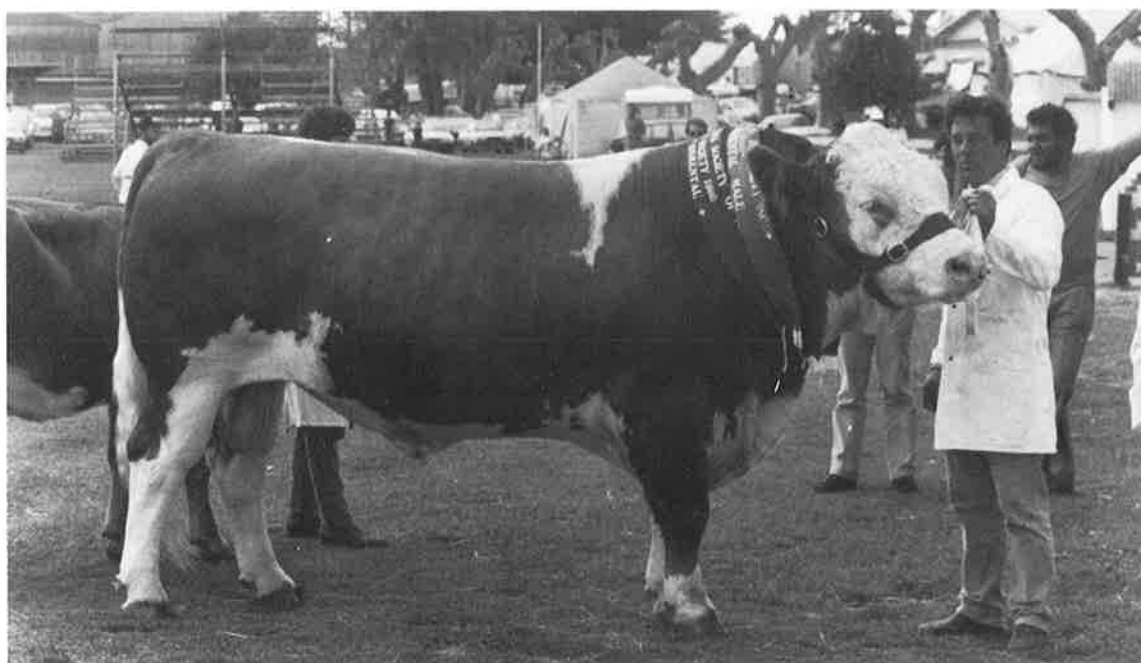


# **RISSINGTON SIMMENTAL** **FEMALE SALE**

**WEDNESDAY APRIL 17 1985**

After 12 years of selection for the functional cattle the progressive farmers are requiring, we are in the happy position where we now have a surplus of females who have passed rigorous tests we ask of them.

Approximately 30 in calf mixed age cows, 20 month heifers and weaner heifers from some of our top families. Featuring the bloodlines of **L.J.B. JADE (6 meat and wool cups)**, **RISSINGTON MONITOR**, (3 meat and wool cups) and many other top local and overseas sires. Both polled and horned cattle will be sold.



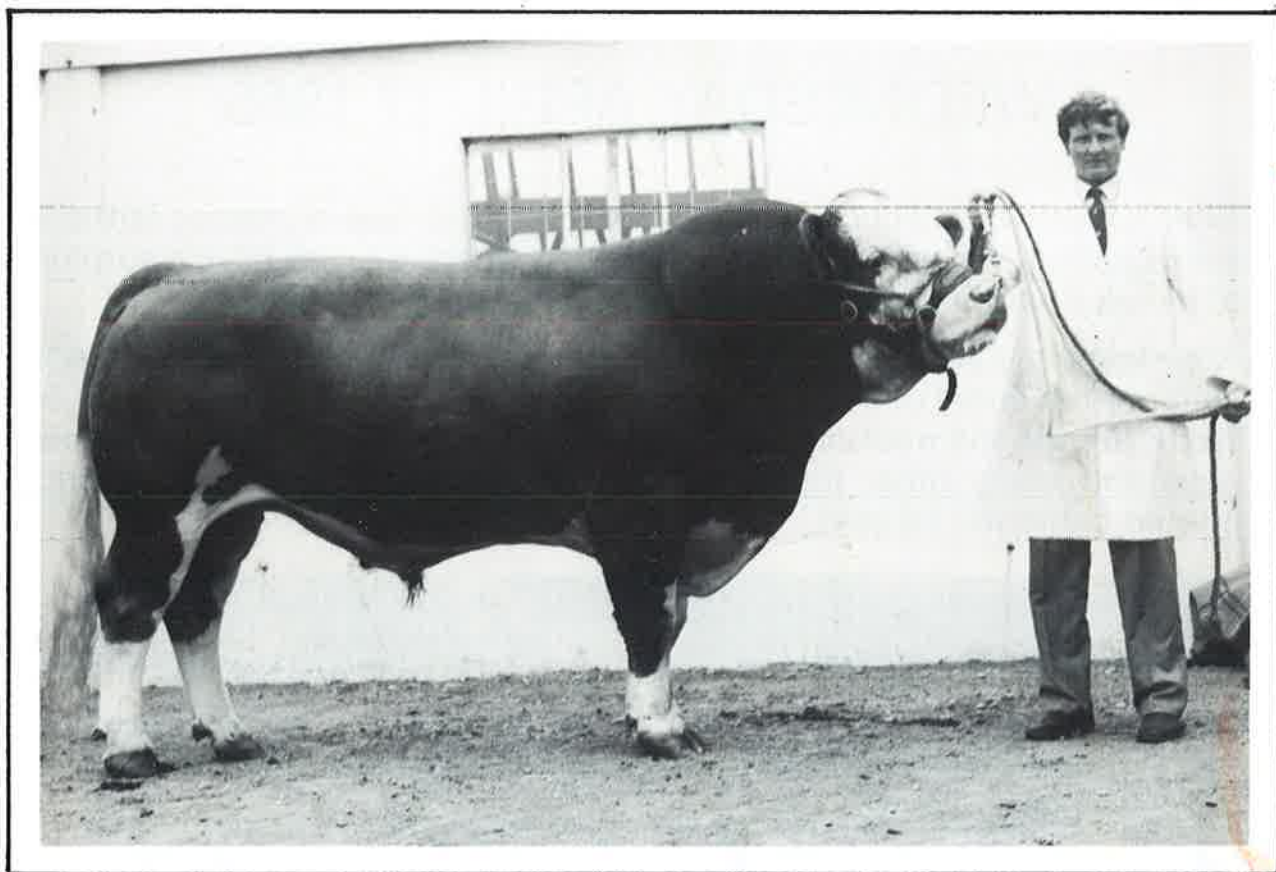
**RISSINGTON MONITOR 1983 and 1984 MEAT  
AND WOOL CUP  
WINNER AT GISBORNE and 1984 WINNER AT  
HAWKES BAY**

For more details contact John and Star Absolom, Phone: (070) 295 836, R.D. 4 Napier, or your agent and remember you are always welcome to inspect our herd. We are only too happy to share what little knowledge and experience we have gained over the last 12 years with interested breeders.





# THE LEVELS



## RISSINGTON MAJOR

*(Born 14.9.81 — 2yr Wt. 925kgs)*

Beefplan Index — No1 out of 76 Bulls

**RISSINGTON MAJOR** was placed **SUPREME CHAMPION** of the Simmental Breed at the Canterbury A & P Show 1984 and took 3rd place in the Meat & Wool Cup.

Semen from this Top sire is now available at \$20 per straw.

The levels will have a top selection of young stock available for sale this coming season.

**ENQUIRIES AND INSPECTION WELCOMED**

**RODNEY COX — THE LEVELS — No 4 R.D. TIMARU  
— PHONE Timaru 82-418**