

# **new zealand simmental**



**autumn issue: may 1983 : number nineteen**

# **RISINGHOLME SIMMENTALS**

**Bred for Size & Quality**



## **RISINGHOLME BRIGADOON II 23-2-81**

**By BAVARIAN from EAST HECKINGTON BAMBI IMP.  
GRAND CHAMPION BULL N.Z. ROYAL SHOW 1982**

**Photographed at 20 months, N.Z. ROYAL SHOW 1982 818kgs**

### **BRIGADOON**

**shows tremendous length. He will be offered at N.Z. National  
16 June 1983 at Christchurch. Also offered will be two other  
well bred and well grown Bulls by the Canadian Polled Bulls**

**ARGOS and ABC ADVANTAGE**

**Enquiries and Inspection Invited**

**STAN CROSSON 'RISINGHOLME' No. 2 R.D. TIMARU  
Phone St. Andrews 368**

# THE SIMMENTAL CATTLE BREEDERS' SOCIETY OF NEW ZEALAND (INC.)

118 VICTORIA STREET, CHRISTCHURCH 1, NEW ZEALAND.  
P.O. BOX 25·100, VICTORIA STREET, CHRISTCHURCH. Phone 793·166

## Contents

Editorial . . . . .	1
People . . . . .	3, 7
Profile . . . . .	5
Technical . . . . .	8
Sales . . . . .	9, 12
Simbeef . . . . .	10, 11, 13
World Congress . . . . .	12
Miscellaneous . . . . .	14, 19
Shows . . . . .	15, 18
The Computer . . . . .	17
Junior Members . . . . .	20

## Advertisers

Risingholme Simmentals  
Scottish Semen Services  
Kaiapoi Engineering  
Malvern Downs Simmentals  
Silvermoyle Simmental Stud  
Pendeen  
East Dome Stud  
Robot Simmentals  
'Avon Park' Simmentals  
Marfrey Stud  
Guthrey Breeding Service  
The Levels  
Simbeef

## Office Staff

Ian S. Johnstone  
(Society Secretary)  
Phone: Christchurch  
(Bus.) 793-166  
(Pvt.) 487-572

Mrs Ann Booth  
Mrs Yvonne Kingsland  
Mrs Paddy Archer

## Editorial

In an economic and climatic situation, such as prevails at the present time, it is difficult to maintain ones enthusiasm. We are bombarded by the media and the 'vocalists' among us on just how bad the situation is. If we listen long enough it has a marked effect on our total outlook and we can tend to lose any progressive thoughts we may have ever had.

Certainly the situation is not brilliant and our farming community has taken an economic battering along with the rest of the community. Added to this many areas have suffered disastrous droughts, which have resulted in compulsory reduction of cattle numbers and loss of valuable breeding stock from the system. A costly and depressing time for those involved.

However, we must look ahead if we are to be progressive. Climatically, we will recover and farming practices do not, and cannot be changed in a twinkling. Cattle will still be required both for pastoral management and production of red meat and it is reliably predicted that there will be an international shortage, due to the great reduction in cattle numbers in many countries. Those who have been fortunate enough to be able to maintain their cattle will be in a position of advantage once the lift comes. Leading authorities recommend cross-breeding in beef production and the Simmental has proved its ability in this respect, both as a sire and a dam. We should make every effort to be imaginative and progressive in the promotion of our cattle so that when the lift comes we are in a position to take full advantage of it.

## Council Members

President:	R. N. S. Cox, The Levels, R.D. 4 Timaru. Phone: Timaru 82 418
Vice-President:	J. R. Sutton, Waihaorunga, R. D. 7 Waimate. Phone: Waihaorunga 878
Councillors:	N. J. Barnett, Arohena, No. 7 R.D., Te Awamutu. Phone: Pukeatua 573 J. D. Graham, Waingaro, R.D. Parnassus. Phone: Parnassus 809 J. R. Houlbrooke, South Road R.D. 2 Waipu. Northland Phone: Waipu 15 H. R. Lowry, Pukekohu, P.O. Box 2369 Stortford Lodge Hastings. Phone: 86 236 A. B. Perry, Penny Road R.D. 9, Palmerston North Phone: Rongotea 772

## CHAIRMAN OF COMMITTEES

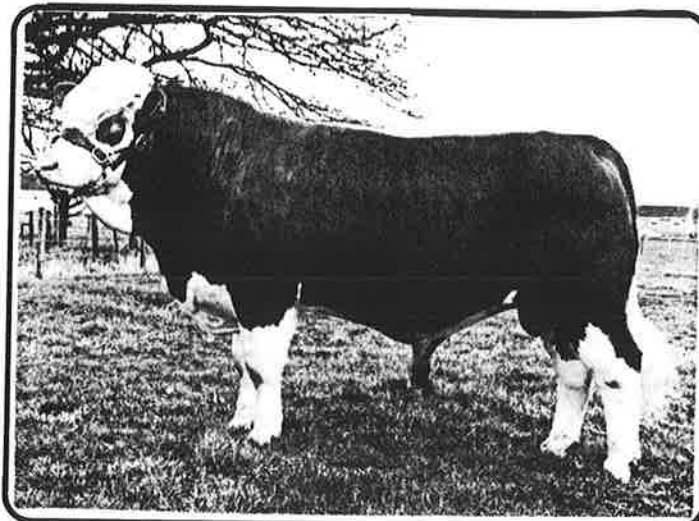
FINANCE: R. N. S. Cox TECHNICAL: J. R. Sutton  
PROMOTION: H. R. Lowry SALES: J. D. Graham

# Scottish Semen Services



Southbar Cattle Breeding Centre.,  
Inchinnan, Renfrew, Scotland,  
Telephone: 041-812 1287

a Division of Scottish Milk Marketing Board.



## A RECENT ADDITION .... 'Brundish Lars'

G.S. Scottish Neff

Sire: **Solway Adonis**

G.D. Blythe

G.D. Merkur

Dam: **Sandra**

G.S. Sissy

H.B. No.6399

Born: 5.6.81

Height: 15cm

Weight: 892kgs

Age: 1yr 8mths

Bred by: D.G. Smith Esq., Lane Farm,  
Brundish, Woodbridge,  
Suffolk. U.K.

Comments: A Performance Tested son of the very successful Sire SOLWAY ADONIS. Test Result Stoneleigh 1981/XII. First on test + 74. Relative Performance and 135cm high, tallest bull on test. Superb dark colouring with well defined spectacles.

**PLUS a large number of other top Simmental  
Bulls originating from many countries**

ENQUIRIES FOR SEMEN FROM ANY SCOTTISH MILK MARKETING BOARD SIRE MAY BE DIRECTED TO THEIR  
MAIN DISTRIBUTOR IN NEW ZEALAND



## Guthrey Breeding Services

MAIN ROAD P.O. BOX 97, KAIAPOI, N.Z.

PHONE: KAIAPOI (0327) 6175

TELEX NZ 4243

P.O. BOX 1339, HAMILTON.

PHONE (071) 80190

A Division of Guthrey Holdings Ltd

N.Z. SIRE SERVICES  
P.O. BOX 8036 HAMILTON  
437-995 HAMILTON

N.Z. DAIRY BOARD  
Newstead A.B. Centre  
No 4 R.D. HAMILTON  
65-044 HAMILTON

DALGETY SEMEN SALES  
P.O. BOX 643  
PALMERSTON NORTH  
68-039 P. NORTH

NORTH OTAGO  
VETERINARY SERVICES  
P.O. BOX 157 OAMARU  
37-879 OAMARU



## Council Elections

This year two Councillors completed their three year term and both put forward their names for re-election. No other nominations were received, so Messrs H. R. Lowry of Hastings, Hawkes Bay and J. R. Houlbrooke of Waipu, Northland, were re-elected unopposed. We congratulate them on their re-appointment and look forward to their contributions to the Society affairs over the next three years.

## Australia a Country of Climatic Extremes

The tragic and horrendous fires that swept the Southern State of Australia created great sadness and natural sympathy. In such events all too frequently you know somebody — Dale Baker, recently elected President of the Australia Association is known to quite a number of New Zealanders. He lost his whole property and stock, including his Simmental Stud, saving only his homestead.

Our sympathy to him and his family is expressed as it is to those many people who lost so much more. It is fickle that almost within days the same areas faced another scourge — floods.

Recent reports from Australia report the drought has broken in most areas, tremendous relief after three years of incredible 'dry'.

## Sydney Show Results

The Sydney Royal held in March was a 'boomer' for Harry M. Miller. His Dunmore entries took: Best Exhibit and Senior Grand Champion Female, Grand Champion and Senior Champion Bull, Junior Champion Bull and Reserve Champion Junior Female. It is of interest that the Senior Bull was from Richmond Emilie (New Zealand), Junior Champion Bull was by Arcadia Frederick (New Zealand) as was the Reserve Champion heifer. Congratulations Harry!

## 1983 Simmental Sales

The 'stage is set' for what we hope will be two successful Sales — Christchurch, 16th June and Palmerston North 21st June.

This year you will note catalogues are not being sent to all members, but will be available on request. A yellow 'Pro-forma' folder listing vendors and entries has already been despatched, which also includes a 'catalogue request slip'. If you want one or both catalogues we will send them to you.

We have thought for a long time that a great number of catalogues are not used and in the interest of economy have decided to supply only on request. Vendors will automatically be sent catalogues.

Sale order this year is based on age after numerous discussions and suggestions. The bull section has been split into two 'runs', so that those who calve at a later date do not all end up at the end of the offering. Older animals will be offered first in each section.

## OBITUARY



### R. (Ran) G. Macdonald

In June 1971 a public meeting was called in Christchurch and as a result of that meeting the Simmental Cattle Breeders' Society of New Zealand was founded. Ran Macdonald was one of the two people who convened that meeting.

His influence and involvement in the Society affairs and the Breed continued up to the time of his untimely death in early March of this year.

Ran served firstly on the Steering Committee which established the basic policies for the formation of the Society and then joined the first Council and served continuously as a Councillor, except for a period of one year. During this time he held the position of Vice-President and Chairman of the Sales Committee for a number of years. He represented the Society in France in 1973 in the selection of a direct importation of purebred heifers to New Zealand.

A person with an agile mind, a fertile imagination and no lack of courage he was widely known throughout New Zealand and overseas. From a strong farming background he farmed firstly at Blythe Downs in North Canterbury where he implemented an ambitious and highly successful development programme. Once this was completed he looked for further challenge and found it in designing and building and establishing the first privately owned semen and distribution centre at Kaiapoi, near Christchurch, which is now internationally recognised under the name of Guthrey Breeding Services. Allied with this project he continued his farming interests with property in the Chatham Islands and North Canterbury.

An acknowledged judge of livestock with outstanding ability in beef cattle he had widespread involvement in the European breeds introduced to New Zealand in the 1970's, importing and founding Simmental, Charolais, Limousin, Romagnola and Chianina studs which have had widespread influence in the establishment of the Breeds both in New Zealand and Australia.

Ran imported the first purebred Simmental into New Zealand, was involved in the first importation of semen and as a result of A.I. breeding exported some of the first crossbred cattle to Australia. He also exported numerous purebreds to the same country.

Latterly, he lived at Governors Bay, near Christchurch, where he farmed and still maintained his interest in Simmentals. He died as a result of a truck accident on a high farm track near his home.

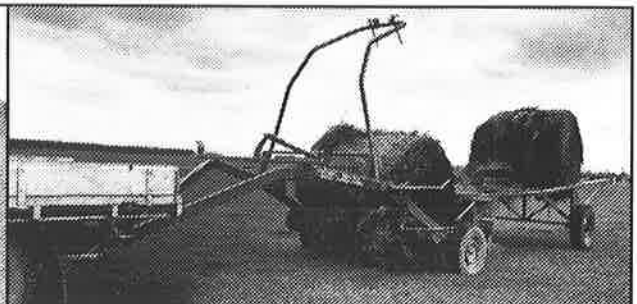
He is survived by his wife, Margaret and four children from a previous marriage.

# GET IT RIGHT FIRST TIME

**SERIES 200**



**SERIES 400**



**SERIES 550**



**SERIES 500**



## CHECK THESE BENEFITS BEFORE YOU BUY A ROUND-BALE FEED-OUT MACHINE:



**Natural Feed-out Pattern** — All Stephens models feed the hay out over the front of the machine. That automatically gives a natural pattern of small clumps of hay, allowing stock to approach from any side without trampling valuable feed.



**Transporting and Unloading** — Not all machines are like the Stephens Series which enable you to quickly and easily pick up, transport and put down bales without feeding them out — this is essential at haymaking time, transporting bales from paddock to storage.



**Built to last — Good Resale Value** — Invest in a machine that's fully developed and proven. Our prototype phase is well over. We've tackled all the problems that round-bale pick-up, transporting and feeding out can turn up. The result — buy a Stephens Series machine, and get a popular, hard-working and versatile machine that keeps doing the job. And when it comes time to replace it you'll get a high resale value.



**Twelve Month Warranty and Local Dealer Service** — We back all our machines with a full twelve month written warranty, and have a network of dealers to give you excellent before and after sales service.



**3-in-1 Machine** — All Stephens Series machines allow you to pick up, transport and feed-out round bales in an easy one man operation.



### 4 models to choose from:

**Stephens Series 200** — A round bale feed out machine that rides as part of your tractor.

**Stephens Series 400** — A reliable ground-drive, single bale machine, ideal for tractor or light utility with optional bale trailer.

**Stephens Series 500** — A larger two-bale hydraulic machine that picks up, carries and feeds out two round bales.

**Stephens Series 550** — The all new fully automatic 2 bale machine with the extra hydraulic motor enables you to load, unload or feedout without ever leaving the drivers seat.

**kaiapoi  
engineering**  
company limited

P.O. Box 117, Kaiapoi, Christchurch, New Zealand.

Telephone Kaiapoi (327) 7995

For full information, Clip and Mail this Coupon for a Fully Illustrated Brochure.

### NORTH ISLAND:

A.M. Bisley & Co. Ltd. —  
throughout the North Island.

### SOUTH ISLAND

Lucas Bros. Ltd., Blenheim.  
Mocketts Motors Ltd., Culverden.  
Wrightson NMA Ltd., Christchurch.  
Marshall Noble Ltd., Rangiora.  
Robertson Engineering, Hinds.

Harkers Motors, Southbridge  
and Dunsandel.  
Wrightson NMA Ltd., Ashburton.  
Prattley Engineering Ltd., Temuka.  
Waitaki Tractors & Machinery, Oamaru.  
Kyeburn Contracting Ltd., Ranfurly.  
Central Machinery Services Ltd.,  
Alexandra.  
Tractors & Implements Ltd., Mosgiel.  
Wrightson NMA Ltd., Machinery  
Division, Invercargill.

Kaiapoi Engineering Company Limited, P.O. Box 117, Kaiapoi, Christchurch.  
Please send me full information on:

- ☐ Stephens Series 200 (Tractor Mounted)  
☐ Stephens Series 400 (1 Bale)  
☐ Stephens Series 500 (2 Bales)  
☐ Stephens Series 550 (2 Bales)  
☐ Brochure required for school project.

Name .....

Address .....

Type of Farm ..... Size .....

The weekly provincial livestock market is generally the domain of the male with the few exceptions when farmers' wives come along as observers to see their husbands' livestock sold. At Addington, however, there is at least one of the 'fairer sex', who not only attends the market on a fairly regular basis, but actively participates in the cattle section.



Jean Thompson of Clarkville, just north of Christchurch is an objective and successful trader on prime cattle. Originally from 'Dobbs Ferry' in the State of New York she came to N.Z. in 1968 as a graduate of the University of Seattle in Botany. She worked initially in University and then teaching and two years later met and married a New Zealander. They purchased a 90 acre block of irrigated country on the northern banks of the Waimakariri where husband, John, carries on a small, but effective engineering manufacturing business. Jean is the farmer in the family and the property and her stock illustrate graphically her prowess in production of grass and as a result prime stock.



A prime young steer — ready to go.



Some of Jeans group of steers.

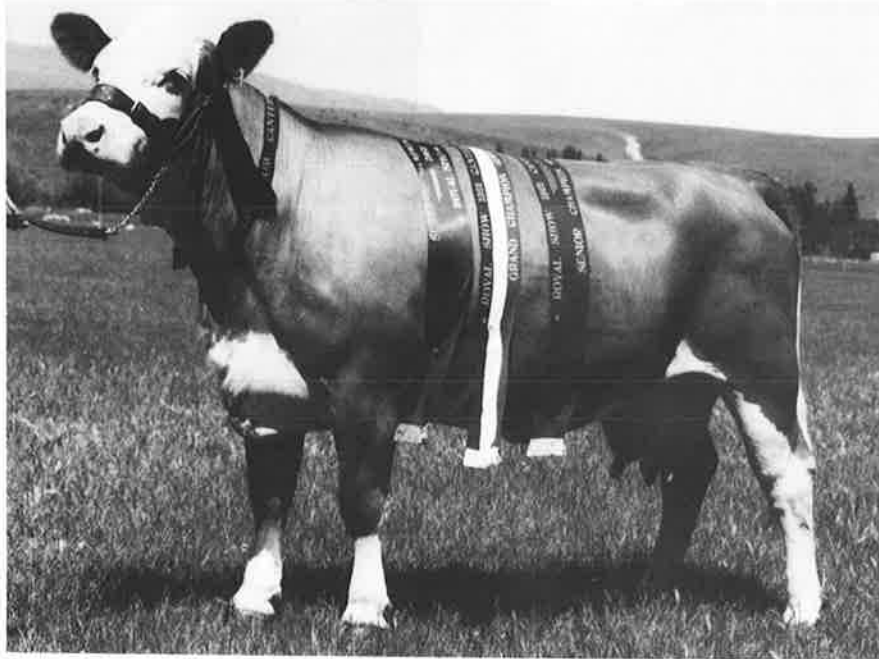
A small stud would be her 'ultimate', but for various reasons this is not practical, so Jean does the next best and buys young cattle and takes them through to a finished line. In the past few years she has purchased Simmental cross weaners from Don Graham, (Member and Councillor), of Parnassus. These cattle off hill country respond tremendously well under her care and she has created a strong and continuing demand for the finished product both in the fat market and with local butchers.

Of Simmentals, Jean comments, 'Though some farmers may say Simmental cattle "eat more" than traditionally breeds, they out perform those breeds. When fed properly Simmentals produce high yielding lean meat carcasses commanding a market premium. A carcass of 300kg at 20 months is not uncommonly produced. (Bought as yearlings, twenty Simmental steers were killed at 16 to 20 months to produce a total of 5,596kg of carcass meat this year).'

Although she has no registered cattle, her involvement with the Simmental Society is close and on two occasions we have been fortunate in being able to hold Y.F.C. beef evaluation days on her property allowing us to demonstrate graphically the attributes of Simmental cross steers under excellent and productive management. Probably the hardest factor Jean has is the disposal of her cattle when they are ready to market — she is a keen stockman and has great 'rapport' with her animals and on her own admission becomes attached to her cattle as individuals and a mob. They in their turn become extremely quiet and as a consequence do well to their ultimate disadvantage.

Jean has plans to enter Simmental cross in our local Canterbury steer carcass competitions and we look forward to her participation with what we know will be a top flight of steers.

# MALVERN DOWNS SIMMENTALS



**DRUM ERMINTRUDE**  
**BY BAVARIAN KNIGHT**  
***GRAND CHAMPION COW***  
***and***  
***SUPREME SIMMENTAL CHAMPION***

at the 1982 Canterbury Royal Show

We will be offering at the Christchurch Sale

**M.D. MICHAEL**

out of the cow above by

**M.D. GEORGE**

(Top Priced Bull at the 1981 National Sale in Christchurch)

**ENQUIRIES TO:**  
**ROBERT GIBSON PHONE 839 TARRAS**



## Chinese Premier Looks at A.I. Centre



'Sue Osborne holds 'Winfield Knight' while father Oakleigh talks to the Chinese Premier (near foreground) Mr A. R. Guthrey is on the interpreters right'

A recent visit to New Zealand by the Premier of the Peoples Republic of China, His Excellency Zhao Siyang, created some excitement on the outskirts of Kaiapoi, north of Christchurch. Although his visit was only of a few days duration and involved a very intensive schedule, the Premier and his entourage, which included the Chinese Agricultural Vice-Minister, Mr He Kang, made a two hour visit to Guthrey Breeding Services A.I. Centre at Kaiapoi.

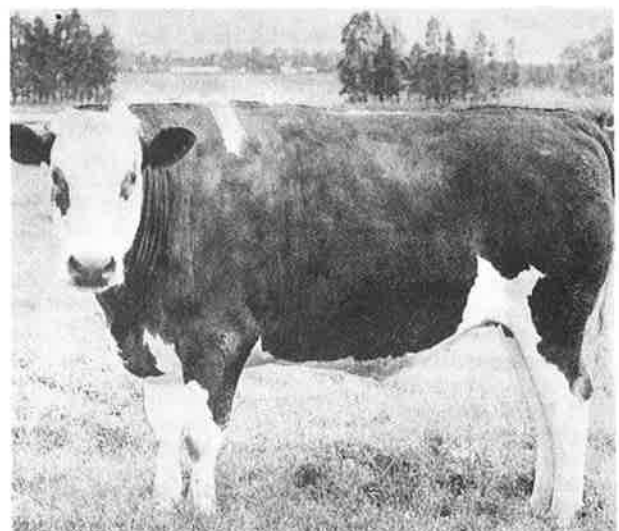
To have the Premier of one of the most highly populated countries of the World call on you is an honour and a memorable experience. It also requires an enormous amount of preparation and liaison and such an important person has a high security rating

on an International scale. The visit was very successful and the Premier showed a most intelligent interest in the whole process of semen collection and processing and talked freely with staff and visitors asking many questions relative to the industry in this country.

Well known Simmental breeder, Oakleigh Osborne and his daughter, Susan, of Leeston were invited to be present and display one of their 'Winfield' stud bulls, which was inspected by the Premier and his party. Simmentals are well established in China. The visit of the Chinese party could open a marketing outlet for New Zealand semen to that country.

## Steer benefits charity

When things are a bit tight and we see degrees of selfishness, it is always heartwarming to see someone who will give or donate to those less fortunate. An outstanding example of personal generosity has reached my desk from the central North Island. A Mr & Mrs G. D. Shepherd from the Te Awamutu area have for some years sold a steer from which the funds have been donated to charity. In December 1982 they put forward a three year old Simmental Friesian cross steer of princely proportions, 930kgs (2,050lbs), that sold for \$1,080 which, together with the proceeds from a weight guessing competition gave the Crippled Children's Society, Foundation for the Blind, Intellectually Handicapped and Arthritis and Rheumatism Foundations over \$300 each. The selling agents and the cartage contractor also gave their services free.



## Carcase test shows profit from lean cuts...

A recent beef carcass comparison exercise carried out at Blayney Abattoir has thrown new light on the cost of fat to the meat industry.

It revealed a potential profit advantage of 28 cents a kilogram — equivalent to \$56 on a 200 kg carcass — for a butcher handling the leaner of two similar live-weight animals.

The comparison was made by Goulburn beef cattle officer, Mr Bob Gaden, using results of a bone-out demonstration conducted for agents attending a training course at Orange organised by the Department of Agriculture.

In the demonstration, two steers were selected from a mob for slaughter and followed to the point where a side from each was broken down and trimmed into the primal cuts to suit today's supermarket trade.

One beast was a fresh, four-score Angus-Hereford cross steer yearling and the other a three-quarter Simmental-cross vealer straight off the cow.

### Retail value

Mr Gaden described the Angus-Hereford cross yearling as "the sort which brings close to top price in the saleyards", while the other showed the heavy muscling and light fat cover typical of the European breeds.

The Angus-Hereford cross, aged 15 months, dressed out at 201 kg from a liveweight of 376 kg — a dressing percentage of 53.5 — with a fat depth of 11 mm at the 12th-13th rib.

But the Simmental-cross carried only 5 mm of fat at the 12th-13th rib, dressing at 54.9 per cent to give a carcass weight of 214 kg from a 390 kg liveweight.

Because the side of the Simmental-cross carcass outweighed the Angus-Hereford side by seven kilograms, Mr Gaden adjusted the weight and value figures proportionately in his yield

evaluation exercise to make them comparable.

As the table shows, the Simmental-cross side yielded 71.1 kg of saleable meat compared to the Angus-Hereford's 65.9 kg.

But Mr Gaden said of more interest was the substantial difference in retail value of the two sides, based on supermarket prices of different cuts a few weeks ago.

The Simmental-cross side returned, in theory, \$351.09 to the butcher compared with the Angus-Hereford side's \$322.63 — a difference of \$56 over a 200 kg carcass or an extra 28 cents a kg.

"And an extra 6.8 kg of waste fat — twice as much — had to be removed from the fatter carcass," said Mr Gaden.

"So when the labor factor in the reduced trimming of the leaner beast is taken into account as well, the butcher's profit difference between the two becomes quite considerable.

"Butchers vary widely in what they consider to be optimum fat cover, but most now prefer around 6-9 mm, which means one of these beasts would be regarded as slightly overfat and the other slightly underfat."

Mr Gaden said another point to emerge from the study was that the leaner beast "appeared to have" more saleable meat in the hindquarter and less in the forequarter.

"Whilst, anatomically speaking, a beast really can't have 'more meat in the right places', it does illustrate that most of the trimming was taken from the hindquarter (where the expensive cuts are) of the fatter beast."

Sydney retail butcher

and feedlot operator, Mr Dick Stone, said while no-one wanted overfat meat, it had to be remembered that it was fat that gave meat its flavor.

Lean cattle breeds like Limousin, Friesian and Charolais were all very well under lot-feeding conditions, but ordinary producers found them hard to fatten as yearlings off grass.

Mr Stone said it was unfortunate that a large number of butchers and housewives were ignorant of what was really "the best buying" in beef.

"Too many butchers buy plain types of yearling cattle because they look cheap, but often the only prime cuts they get off these carcasses are rumps and sirloins; all the rest is only fit for stewing," he said.

"Because customers don't know any better, they buy these supposedly better cuts, whereas they would really be getting better and cheaper meat by buying 'lower grade' cuts like round, topside and blade off a good beast."

Mr Stone said the large number of plain yearling cattle always on the Australian market benefited neither producers of high quality beef, nor customers.



### BLAYNEY ABATTOIR CARCASS COMPARISON BONE-OUT YIELDS

(Both animals adjusted to a side weight of 100 kg)

Cut	Hfd-Angus		% Simmental	
	Retail Price	Wt (kg)	Value \$	Wt (kg)
<b>Forequarter</b>				
Brisket	3.99	7.5	29.93	6.8
Chuck	2.39	5.95	14.22	5.6
Blade	2.99	5.15	5.5	
Rib roast	3.99	9.6	38.30	9.35
Forequarter sub-total		28.2	97.85	27.25
<b>Hindquarter</b>				
Rump	7.64	4.15	31.71	5.05
Fillet	9.90	0.7	6.93	0.75
Sirloin	7.34	6.9	50.65	6.9
Round	6.40	4.3	27.52	4.7
Topside	6.40	4.95	31.68	6.35
Silverside	6.30	5.8	36.54	7.2
Hindquarter sub-total		26.8	185.03	30.95
<b>Other</b>				
Shin	3.64	2.9	10.56	2.8
Mince	2.99	8.0	23.92	10.1
Total saleable meat		65.9	317.36	71.1
<b>Waste Products</b>				
Fat	0.14	12.1	1.69	6.0
Fat trim	1.0	2.4	2.40	1.7
Bone	0.06	19.6	1.18	19.2
Total side weight and return		100.00	\$322.63	98.0
% saleable meat		65.9		71.1
Return \$/kg carcass wt			\$3.23	

## Ashleigh Simmentals Dispersal

Well known Waikato breeder and show exhibitor, Noel Buchanan of Kiwitahi held a Dispersal Sale of his Simmental herd at Morrinsville in early May. Noel who is changing his farming pattern in preparation for retiring from farming did so with reluctance. An early member and a strong supporter of all Simmental events, Noel has done a great deal to promote the Breed in the Waikato and his withdrawal from the sale and show arena will leave a gap in the area.

His sale was sound and his top animals found a ready market with other Stud breeders. Top price was \$3,700 for a polled heifer, which was bought by J. P. & S. Absolom of Napier, who also bought eight other lots. Purebred females (in-calf), averaged \$1,119; Seven-eighths averaged \$693, (top price of \$2,300); Weaner calves averaged \$560 (Purebred bulls) and \$485 (Seven-eighths heifers), which was a little below what was expected, but the sale resulted in a total clearance.

## Herd Dispersals

With a constantly changing farming pattern we must always expect changes in our membership. People retire, change their systems or just stop breeding Simmentals for various reasons. Normally, we receive written advice of cessation of membership and the matter is tidily completed.

There is however one important point, which is sometimes overlooked. When a member resigns, in doing so he also cancels the registration of any cattle he may still have. Rule 9 (e) states, 'If a Herd Owner, resigns, his herd shall no longer be deemed to be registered with the Society and its registration shall be cancelled.' In short, after resignation, animals are no longer transferable as registered stock. Any member planning to terminate his membership should complete any sale transactions, transfers and fees **prior** to tendering this resignation. Prospective purchasers should make sure that any cattle being sold are viable. This may be quickly checked out with the office. To date we have not enforced Rule 9 (e), but could do so, if such transactions are not dealt with in the proper manner.

## Gate Signs

We have recently obtained a small stock of gate signs. These are aluminium discs 18" in diameter painted in enamel and designed as the central motif for your own personalised gate sign. As I move about the country I see attractive stud signs at Breeders gates — mostly of other Breeds. A gate sign is just another way of promoting your cattle and the Breed. The new signs we have are an improvement on the previous ones in that we have reversed the colours — they are white symbol on a larch green background. Available on order from the office at \$17.50.

**S**ILVERMOYLE  
IMMENTAL  
TUD

## WHERE PEDIGREES PERFORM

Visitors Welcome

In 1982-1983 year the 'SILVERMOYLE' stud produced:

**1982 AUCKLAND EASTER SHOW BREED CHAMPION**

**1982 MORRINSVILLE 'ALL BREEDS' CHAMPION MALE (SENIOR)**

**1982 MATAMATA A & P 'JUNIOR ALL BREEDS' CHAMPION & RESERVE**

**1983 WAIKATO CLUB SHOW CHAMPION MALE & CHAMPION FEMALE**

*Plus a host of other worthy prizes*

**FOR SALE:** 'SILVERMOYLE MODESTY' — Clean Polled Purebred  
at Palmerston North 21-6-83

'SILVERMOYLE MASTERSTROKE' — Dark Red Horned  
at Waikato Club Sale Cambridge 1-7-83

**Also coming up:** Forty Young Purebred Bulls (unregistered)  
Supreme for Cross Breeding. Our Best Line Yet.  
Autumn & Spring Calves.

WILLIE & GENE ECCLES, MANAWARU R.D.1 TE AROHA. PH. MANAWARU 808

# Simbeef

## Simbeef Weaner Sales

### South Canterbury:

Temuka (April)

- ★ Market Toppers. Simbeef Steers \$272  
Vendor — E. J. Parr, Pleasant Valley  
Of 110 pens, 47 were Simmental Cross.  
Top ten pens were halfbred or better and over \$232.  
E. J. Parr also topped the heifer market.

### North Canterbury:

Addington (April)

- ★ Market Toppers. Simbeef Steers \$336  
Vendor — O. J. Osborne, Leeston  
Average 71 steers \$243, 41 heifers \$225.  
The seventh time Mr Osborne has topped the market.

### South Otago:

Owaka (April)

- ★ Market Toppers. Simbeef Steers \$318  
Market Toppers. Simbeef Heifers \$210  
Vendor — W. Leslie, Owaka  
Next best price \$264 Simbeef Steers.  
Total yarding 2,000 calves.

### Southland:

Lorneville (April)

- ★ Market Toppers. Simbeef Steers \$254  
Vendor — M. Day, South Hillend

Castlerock (April)

- ★ Market Toppers. Simbeef Steers \$338  
Market Toppers. Simbeef Heifers \$196  
Vendor — B. Pinney, Mossburn  
119 calves, including 50 heifers, average \$222  
900 calves in sale.

### Hawkes Bay:

Waipukurau (April)

- ★ Market Toppers. Simbeef Steers \$315 (Pen of 50)  
Vendor — D. Brownrigg, Waipukurau  
2,000 calves in market.

Waipukurau (April) — Heifer Sale

- ★ Market Toppers. Simbeef Heifers \$194  
Vendor — Tamariki Trust, Waipawa.

### Northern Wairarapa:

Pahiatua (April)

- ★ Market Toppers. Simbeef Steers \$290  
Vendor — W. B. Cooper, Eketahuna  
21 averaged \$266.

### Manawatu:

Feilding (April)

- ★ Market Toppers. Simbeef Steers \$305  
Vendor — R. McIntyre, Apiti.



'Oakleigh Osborne with his top pen of weaners at Addington in April.'

### Bay of Plenty:

Te Puke (April)

- ★ Market Toppers. Simbeef Steers \$362  
Vendor — Mr Rossena, Te Puke (2nd year running)

### Dunedin:

Burnside

Ralgro Award Winners — Simbeef Steers \$258 (Pen of 20)

Vendor — J. McDonald, Mt Gowrie Station.

## Simbeef Steers — Carcase Competitions

### Manawatu

Feilding (March)

**Class A. 220kg (2 teeth)**

**Hoof:** 1st H. Smyth, Dannevirke  
2nd H. Smyth, Dannevirke  
3rd N. Weir

**Hooks:** 1st C. Hutching, Dannevirke  
2nd H. Smyth, Dannevirke  
3rd Mrs J. Absolom, Napier

**Class B. 270kg (4 teeth)**

**Hoof:** 2nd H. Smyth, Dannevirke  
3rd H. Smyth, Dannevirke

**Hooks:** 1st H. Smyth, Dannevirke  
3rd N. J. Weir

**Class C. 320kg (6 teeth)**

**Hoof:** 2nd N. J. Weir

- ★ Champion Carcase for the competition was won by Colin Hutching of Dannevirke.

**simbeef**

symbol of progress

## Southland:

Gore

**Class A. 270kg**

**Hoof:** 4th M. Ayson, Kuriwao Gorge  
5th M. Ayson, Kuriwao Gorge

**Hooks:** 1st M. Ayson, Kuriwao Gorge  
2nd M. Ayson, Kuriwao Gorge

★ Champion Carcase for the competition was won by M. Ayson.

## Hawkes Bay:

Hastings

**European Breeds (Under two years)**

**Hoof:** 1st G. Kemp, Gisborne  
2nd G. Kemp, Gisborne  
3rd G. Kemp, Gisborne

**Hooks:** 1st G. Kemp, Gisborne  
2nd G. Kemp, Gisborne  
3rd G. Kemp, Gisborne

★ Champion Carcase for the Competition was won by G. Kemp.

D. G. Lomas Cup for most profitable animal for the exhibitor — G. Kemp.

**European Breeds (Over two years)**

**Hooks:** 2nd E. R. Smith

**Note:** The Hawkes Bay Competition is now divided into classes for European and British Breeds and total entries were 85 animals. An interesting observation was made that the European breeds averaged 30kgs per carcase heavier than British breeds of the same age, which on a schedule calculation gives a premium of \$50.

## Canterbury:

Christchurch

**Hoof:** 200-300kg. 1st P. L. McCaw, Methven.  
Winner of Ralgro prize

**Hooks:** 220kg and over 3rd B. R. Barclay, Brookside.  
Winner of Hereford Association Trophy.  
300kg and over P. L. McCaw, Methven.

## Simbeef Dairy Cross

It is of interest to receive reports from people in the dairy sector who are using Simmentals to produce beef.

John Hall of Raglan advises he sold eleven Simmental/Friesian weaners in March, 1982 at a weaner sale for \$200. They were re-sold at 20 months for \$455. The sale in which they were sold reported other 2½ year steers at below \$400 and 20 month cattle at around \$350. Special mention was made of the big framed well grown Simmental/Friesian cross. John also sold dairy beef heifers at Frankton in November at 4 months of age from \$158 — top of the Sale.

Marion Lane of Okato in Taranaki reports a sale of two 2 year Simmental/Friesian steers at \$456 last October. Straight Friesians of the same age sold at \$305.

These reports are good proof that the Simmental used as a beef sire over dairy cattle can produce worthwhile results.

## Austrian Merit Sire Proves Most Successful

Werner Gut of Kaponga has advised us that the Austrian sire Primann which he selected when in Europe a couple of years ago is proving very successful. Heifers by Primann have all calved without assistance and are all back in calf. Their average present production index is 113 and they are of excellent temperament, constitution and type.

In Werner's own words 'If we had this sort of bull available eleven years ago there would be a lot more Simmental dairy farmers'.

At present Primann semen is proving a little difficult to obtain but further enquiries are being made.

ANSWERS TO PAGE 20 PUZZLE  
1. Hat band altered. 2. Part of cliff face missing. 3. Thorn added to cacti. 4. Boy's feather is larger. 5. Hair braid on woman is shorter. 6. Circle on pot is missing. 7. Line added to tepee pattern. 8. Animal's tail is longer. 9. Blanket line broken. 10. Odd shoes on boy.

# PENDEEN

## HORORATA

will offer at Christchurch  
June 16 1983

**'PENDEEN MAGNUS PIKE'**

**Reserve Junior Champion Bull  
1982 Royal Show**

**Coopental Performance Trophy Winner  
1982 Royal Show  
LOT No. 25**

**Other Young Stock Available  
from Proven Dams at Pendeen**

**MRS J. C. HALL, PENDEEN, HORORATA  
PHONE 873 HORORATA**



## 1984 World Congress (Australia)

Members have already had advice on this forthcoming major event on the Simmental calendar in the South Pacific. The Congress will be held in conjunction with the Royal Sydney Show, starting in Sydney on 10th April, 1984.

We have indications of a strong contingent of New Zealanders for attendance and have been working steadily on arrangements with our travel agents, details of which will be forwarded to interested members as soon as finalised.

Prior to the Congress, New Zealand will host a Pre-Congress Tour of New Zealand for overseas visitors, (and for any New Zealanders who might like to join in). This will start in Auckland on April 2nd, travel by coach through the Waikato, Rotorua, Taupo to Napier and then by air to Queenstown and by coach back to Christchurch from where delegates will leave for the Congress in Sydney (starting on 10th April). The tour will embrace both Simmentals and tourist attractions and Clubs and members in the areas visited will participate and assist as they are able. Regrettably, time does not permit an extensive tour of the country and areas have been selected to give the best possible cross section in the time available. At present, we have a known group of about forty Americans, but expect quite a number of delegates from other countries will join the tour. If any members would like to join this pre-Congress tour, please let us know as soon as possible and we will give you full details of costs and the itinerary.

In regard to the New Zealand contingent going to the Congress we already have a lot of names of possible delegates. If you have not put your name forward you may still do so, but we must know as soon as possible, as we have to firm up bookings in the near future.

At this stage, we have not received costings from Australia, but hope to have these within a few weeks and will communicate with those members who have indicated they wish to go with as much detail as possible as soon as we hear.

Mr Paul Trenoweth who is Chairman of the World Congress Committee in Australia will visit New Zealand at the time of the Annual Meeting and National Sales and will, we hope, be able to give members an address on some of the finer details of the Congress.

It will be a really worthwhile event and we look forward to the Pre-Congress tour and the Australian visit and hope that as many New Zealanders as possible will participate in both.

Once again we prepare for our Annual Sales and call for entries will be out in the next few weeks. Each year we progress a little better than last and this is largely due to the fact that our vendors are becoming more experienced in preparation and presentation of their cattle — also our cattle have progressed and are of greater numbers.

It is on preparation of cattle that I write. It is very obvious that those who make a proper job of it are the ones who get the best return. In the last couple of years quite a number of new vendors have joined our ranks and have put forward excellent stock very well prepared. They have also entered competitive showing with the same prowess and results.

To sell or show successfully, some dedication is needed and it should be at this time of the year preparation starts — handling, tying-up and getting your animals used to you and other people.

A number of breeders have found that the assistance of a 'groom', who is specially employed and works specifically with the cattle in the latter stages before a sale or show is money well spent. It has been suggested in one area that such a person might be enlisted to work on a collective group of breeders' cattle at a central point. This is quite frequently done overseas.

The main point made is to start on your cattle early and even if you do not intend leading them, get them to a stage they can be easily and efficiently prepared for sale.

Footnote: This comment due to the date of publication of this issue of the magazine is perhaps not relevant to this year's sales but it still applies in principle.

## Editors Note:

Members are thanked sincerely for the foregoing very enlightening reports on sales of Simbeef cattle. The results are most encouraging and we hope that other members will utilise them for promotion of sale of their own bulls.



'Not all calves respond to the halter without protest'.

# simbeef

symbol of progress

## Beef Day in Southland

In early March, the Southern Districts Club set up and held a most successful 'Beef Day' at Castlerock, near Lumsden. This was open to anyone who wished to attend and resulted in a gallery of over sixty people and included farmers, stock firms, Y.F.C. members from the surrounding area and elsewhere.

The day started at 10.30 a.m. with a screening of the Society slides on the 'Cutability of Beef Cattle' by Dr John Long, U.S.A. Councillor, Don Graham spoke on the slides and their purpose, which highlights the desirable type of animal for the present day market. At the conclusion of the slide showing, participants were issued with Y.F.C. Stock Judging cards and moved to the adjoining sale ring, where five pre-selected steers were assembled illustrating the types of animals demonstrated in the slide collection. Each participant had to select and place to order the animals of their choice and give his or her reasons for such placings. An excellent barbecue lunch was provided by the Mossburn Community Centre Committee, while assessment was in progress.

After lunch, Don Graham gave the placings of the animals made by the panel that had selected them and the reasons for such placings. Discussions were held and various comments and opinions given and many of these illustrated clearly the instructional value of the slides.

After the assessment of the steers a short film, which had been loaned by the American Association on Simmentals in U.S.A. was screened and those present enjoyed a social hour while judging cards were marked. Cards were divided into three sections, Senior, Y.F.C. and Women. Winner of the Senior class was Simmental breeder, Frank Blakely of Riversdale. Winner of the Y.F.C. class was Michael Morton, Heriot and Graeme Muir, Castlerock 2nd and Nicole Irving, Wairaki 3rd. The Women's class winner was Mrs Maureen Morton of Heriot. Small prizes were awarded for each class.

The day was heralded as extremely successful and it was pleasing to see a number of people who are well known in other Breed Societies in attendance and joining in the activities. The Southland Club must be congratulated on their foresight and planning of this very well run day, which went without a hitch. Our grateful thanks must also go to Mr Murray Ayson, who both provided and trucked the steers for appraisal.

The day concluded with a more than successful Club dinner at one of Lumsden's hotels.

# simbeef

symbol of progress

## EAST DOME STUD

(Herd No. 901)

### WILL OFFER THREE BULLS AT THE SOUTH ISLAND NATIONAL SALE

**LOT 23 'EAST DOME MARLO' By SBL MARZOU From GRETA**

**LOT 26 'EAST DOME MAGNUM' By BALIG AGENT From GWENDOLEN**

**LOT 43 'EAST DOME MAJOR' By EAST DOME KENT From FELICIA**

A selection of young stock available this season. Inquiries and Inspection Welcome  
**W.A. ROUSE, EAST DOME, FIVE RIVERS, R.D. 3, LUMSDEN**  
**PHONE LUMSDEN 86R.**

# Miscellaneous

## Transfers

We continue to have problems with uncompleted transfers. People sell animals to other breeders or new members, but do not originate the transfer.

It is a REGULATION that transfers **must** be organised at the time of the sale and completed by the vendor and the purchaser — without it we have no knowledge that the animal has left a herd, or where it has gone to.

The system is simple:

- Obtain transfer forms from the office.
- Complete one copy for the purchaser, one copy for the office, one copy for your file.
- Send one copy to the purchaser for signature.
- Send one copy, plus the Certificate to the office.

In this way we know an animal has been sold.

We can and we will, if we are forced to, refuse to complete the registration of an animal into another herd if transfer has not been properly completed.

## Reduction in Transfer Fees

The transfer fees for both half-bred and three-quarter bred animals have been reduced to match the reduction of registration fees of which you have already been advised.

Fees for these animals are now as follows:

Half-bred	Registration	\$4.00
	Transfer	\$4.00
Three-quarter bred	Registration	\$8.00
	Transfer	\$8.00

## With a Moo Moo Here . . .

The Y.F.C. Annual competition was nearing completion, tension was running high. On the final evening as part of the elimination to select the overall winner the three finalists appeared in turn on the stage and were asked the same question by the Master of Ceremonies. Each had to complete the line of a song and spell the final word.

The question ran, 'Old McDonald had a ? . . .'

The first candidate, an American exchange student, quickly answered 'ranch, R-A-N-C-H'. 'Near, but not good enough', said the M.C.

The young kiwi answered, without hesitation, 'Simmental, S-I-M-M-E-N-T-A-L'. 'Could be,' said the M.C., 'but your off track'. The final contestant, who had a bit of a brogue, thought for a moment and answered 'farm' — the audience roared their approval. When order had been resumed, the M.C. asked him to spell the word. 'E-I-E-I-O', he quickly retorted!

# ROBOT SIMMENTALS

## THREE TOP BULLS FOR NATIONAL

### LOT 21 KARANUI MERVEN

Born: 20-9-81. Sire: SCOTTISH PILOT. Dam: WSSB GINA  
Summer Growth: 2.50kg/day over 103 days (5.10lbs) 778kg 4-3-83

### LOT 24 ROBOT MAJOR

Born 28-9-81. Sire: MARZOU. Dam: KARR FABEL  
Summer Growth: 2.49kg/day over 103 days (5.10lbs) 748kg 4-3-83

### LOT 41 ROBOT MINSTREL

Born: 18-10-81. Sire: MARZOU. Dam: SUNDOWNER ESTRELLA  
Summer Growth 2.16kg/day over 103 days (4.42lbs) 748kg 4-3-83

**JOHN A. ROBINS**  
**No. 1 R.D. WINTON PH. SOUTH HILLEN 647**

## Southland Show (December, 1982)

Simmentals turned out in comparative strength at the Southland Show in Invercargill in December. Robin Lowry of Hastings co-incided a visit to the area with the Secretary and judged the entries.

Exhibitors were Mr & Mrs A. W. Duncan of Mossburn, R. Lott of Garston, J. Robins of Winton and R. Neas of Invercargill, who presented a total of eleven animals for judging. The standard was extremely good and of credit to the exhibitors. It was of interest to note the obvious increase in appraisal of our cattle by the farming public at large and also the other Breed Societies. Interest was high.



'Pam & Allister Duncan receive the 'East Dome Trophy' from Woodford Rouse.'

The Duncan family of Mossburn had a good show and were placed second in the Meat and Wool Cup (Senior) and also second in the Junior event.

Their cow, Southern Katy by Hampshire Portikus with her calf at foot was well deserved Champion of the Breed.



'Relaxing at the show, Bill Lott with his mother Betty.'

In the heifer class Ray Lott of Garston took the major prize, with Bob Neas taking a third and the Duncan's a fourth. The bull class which was made up of youngsters, placings were Alister Duncan, John Robins, Pam Duncan and John Robins in that order.

Herdsmen's Trophy went to Bill Lott, son of Roy and Betty.



'Bill Lott receives the Herdsmen's Trophy from the Secretary.'

The active participation of our Southern stud members in Shows has done a lot to bring the Breed into the public eye and has resulted in a dramatic expansion of the Breed in Southland.



Show visitor, Graham Paisley of Clydevale in South Otago who is building up a Simmental Stud.

## TATTOO YEAR LETTERS...

1982 = N

1983 = P

# **'AVON PARK' SIMMENTALS**



**WE WILL OFFER FIVE BULLS AND TWO HEIFERS  
AT THE SOUTH ISLAND NATIONAL SALE, 16th JUNE**

Avon Park also have a selection of other cattle  
for sale from a variety of outcross bloodlings,  
bulls of working age and heifers.

**ENQUIRIES AND INSPECTION ALWAYS WELCOME  
DAVID AND MELINDA CARTER  
'AVON PARK' STUD, TEDDINGTON, 1 R.D. LYTTTELTON  
PHONE 299-897 CHRISTCHURCH.**



# The Computer

## The Computer

Probably for the first time since we started writing reports on the Computer we are able to say with some confidence that the 'machine' is in fact working well and smoothly. As a result we have noticed a marked improvement in the returns by members, which in itself shows the system to be workable. When you look at it, it is a far simpler task to enter a sire and calf details on a pre-printed sheet than a full pedigree for every animal for registration. We feel sure our hassels are behind us and look forward to relatively simple recording and worthwhile results.

The pattern of events that will be followed for 1983/84 in sequence is set out for your information. (You will receive an instruction 'brief' with each step, so don't be 'boggled' by the total system).

### 1. Animal Disposal Listing (A.D.L.)

This is a line-flow computer list of all the animals you have recorded in the system. It enables you to tidy up your herd records by removing any animals that are no longer there or adding those purchased. This will be produced at the end of June and must be completed and returned within a month.

### 2. Calf Entry Sheet (C.E.S.)

Produced from your 'A.D.L.', this will list your breeding cows for the season on which you enter your sire used, calf I.D., sex and birth date and signify whether you want to register the calf with an 'R'. (It is also to be encouraged to record those calves that are not eligible for registration (I.E. steers etc), as they become a plus-record against your cows' breeding index).

**NOTE:** You will have a final opportunity to complete and verify your registrations when you receive the Calving Report. Your 1983 Calf Entry Sheet should be returned by the 28th February (or earlier if you have it ready).

### 3.(a) Calving Report

This is a new print-out and many members will have received one for 1982. It is produced from your C.E.S. and lists all your recorded calvings. It is for you to check for detail and gives you the opportunity to include additional calves or delete any you have decided are not viable. (If you de-register one you have listed for Registration on your C.E.S. you will receive 75% refund of the registration fee). The duly amended Calving Report must be returned by the 31st of May at the latest.

### 3.(b) Performance Recording

On your Calving Report you will see there is provision for Performance Recording on the right-hand side. By completing this section you automatically put your herd on Beefplan without having to fill in a duplicate set of documents. This is an additional and most worthwhile extension to our pedigree system. Ongoing weight records will be handled by

Beefplan direct with you. The fee for Beefplan is \$1 per dam listed per annum. For 1982 born calves, Beefplan will give an incentive discount of 50 cents per dam for **this year only**. (See also 5).

### 4. Registration Certificates

These will be produced once you have checked and returned your Calving Report. For economy of the computer operation production will be in 'runs' i.e., when sufficient Calving Reports are available for processing to make the operation of the machine worthwhile. To date your Registration Certificates have shown a Sire/Dam pedigree only, but this will build up with every successive generation.

### 5. Pre-List Fees

For each breeding cow listed on a Calf Entry Sheet a fee of \$2 is charged to cover the cost of processing, printing and subsequent reports and stationery. As an incentive for members to record performance either in beef or dairying, a reduction of 50 cents per dam listed will be given to anyone who joins Beefplan or Herd Tests with the Dairy Board. This will reduce the Pre-list Fee to \$1.50 per dam.

### 6. Penalty Fees

We must have a 'shut off' date if the system is to operate efficiently. Starting this year, any registration after the **31st of July** will incur a penalty fee, which will double the normal fee. The implementation of such penalty will be automatic unless there is a viable reason that it should be otherwise.

#### FOOTNOTE:

If any member is unsure of any operational section of the system, please get in touch with the office — we are here to help. If the situation is such you want 'on the spot' assistance, we will get someone in your area to call and see you.

## LATE FEES.... REGISTRATIONS

**Any animal (born 1982) not registered by the 31st. JULY 1983 will be charged at double fee.**

**DON'T BE LATE**

## 1982 Calf Entry Sheets

These are due **NOW**. If you have not completed your returns please hurry along (bearing in mind late fees).

# Shows

## Simmentals for Sale

### Taranaki: (to calve in October).

One Seven-eighth bred Female. In-calf — Scottish Extra Special.

Six Three-quarter bred Females. In-calf — Scottish Extra Special.

Three Half-bred Females. In-calf — Scottish Extra Special.

One Heifer by Soliel (to calve in October).

Four Weaner Heifers by Soliel

One Weaner Heifer by Thierauch

Phone: Mrs G. May, 7606 Stratford. East Road, R.D.22, Stratford.

## South Canterbury:

One Pure Bull

Two Pure Females

Six Seven-eighth bred Females

Three Three-quarter bred Females

Phone: David Kerr, 27-673 Timaru (Evenings)

## Foot Trimming

The Sales Committee has brought in a Condition of Sale this year regarding the trimming of feet. The entry of an animal in our two sponsored sales constitutes a guarantee that the animal has not had its feet trimmed. This condition is introduced to minimise the possibility of animals being offered for sale at auction that may have inherent foot problems.

## Fairlie Show

The Easter High Country Show at Fairlie has for the past several years attracted a good entry of Simmentals. This year was no exception and a group of enthusiasts put forward an excellent group of entries. George Habberjam, Tony Partridge and Colin Patterson, (all from near Christchurch), joined forces with David Elliot and Stan Crossan of South Canterbury to keep the Breed before the public. Judge was Rodney Cox of 'The Levels'. Fairlie exhibits entries of reputation and this year 'Sterndale' the well known Angus Stud brought their 1982 Royal Show Meat & Wool Cup winner, who took the Premier Breed Tartan Sash.



Parade at Fairlie—Stan Crosson with his Champion bull followed by son Murray and Colin Patterson.



'Mars'

## MARFREY STUD

OFFERS AT

THE NORTH ISLAND SALE



'Natasha'

**'MARS' —**

A Well Muscled Bull

Res. Junior Champ, Waikato A & P Show

**'NATASHA' —**

One of the best. 100% Eye Pigmentation

**'NOELINE' —**

A Polled Daughter of 63K

Geoff and Marion Mathis.  
Phone 408 Tirau. R.D. 2 Tirau

# Miscellaneous

## Postage:

In your correspondence with the office please ensure when you mail an envelope or package you put the appropriate postage on it. Since postage has risen we seem to have had a spate of 'short paid' mail received. In each case we are required to meet the penalty fee involved and this soon mounts up. The Post Office has categories of envelope sizes and rates in printed form and if you obtain one of these it will certainly reduce the incidence.

(Footnote: We are aware that our own 'slate' is not entirely clean and we have done the same thing on isolated occasions, but we do our best).

## Photographic Records:

We have over the past few years had great success in the Show Ring and at other events. Sadly we do not always record the event and this note is to suggest to you that if you do something sensational like winning the Meat & Wool Cup, have a photograph taken of the animal in its full regalia. There are always professional photographers at major shows and a really good photograph is a good record for our own files and the Breed. Some 'candid' photography is of good quality, but the professional makes a proper job seeing that such things as ribbons are correct and the animal is standing properly. The opportunity usually only occurs once — on the day — that's when it should be taken.

## Back Numbers of Magazine

If anybody has a spare copy of Issue No. 1 (Red) and No. 3 (Navy Blue), we would be grateful to receive them. We have a few people who have joined since these were issued, but are interested in having a complete set.

## Magazine Printing

It has been decided by the Council that from now on we will publish two issues a year — one in the Autumn and one in the early Summer. This has been decided in view of the high cost of production and the very considerable amount of work that goes into each production. The magazine will remain in its present format and it is hoped as time goes on we will be able to include more technical information. With a reduction in issues our communication with members will not be lessened, as we will despatch matters of immediate importance by mail.

(It is of interest that the Australian Association have changed their format of publication totally and have reverted to a news-spread type publication — a pity to lose such a good publication).

## Rule Book (Re-print)

We are in the final throes of re-printing the Rules and Regulations, copies of which will be sent to all members in due course. When you receive your copy please take time to read it — it is for your guidance in administration of your herd and the Society affairs.

## Tattooing — Year Letter Sequence

The years seem to rush by and it seems only a short time ago that our year letter was 'E' (1974). We have had a look at the sequence for the next year or two and have made a few necessary alterations, which we ask you to note:

<b>Year Letters:</b>	1981 = M
(For calves born between	1982 = N
the 1st January and	1983 = P
31st December).	1984 = R
	1985 = T

You will see we have dropped several letters, simply because in a tattoo they can look like a numeral. These are 'O' = 0, 'Q' = 0, 'S' = 5 for the same reason we dropped 'i' earlier in the sequence.

**Note:** Please ensure you tattoo your calves with care.

## Tattoo Equipment:

If you are breeding registered cattle you should have a set of tattooing equipment. Single line sets are available from Farm-Acy N.Z. Ltd, P.O. Box 30, Palmerston North and the double line automatic sets are available from Pyne Gould Guinness Ltd, P.O. Box 112, Christchurch. Both are relatively costly (the latter more so), but with care will last for years.

If by chance any reader should know of the whereabouts of disused sets of equipment we would be grateful if they would advise the office. Some earlier breeders now out of the system must have equipment gathering dust!

## Biros

Some time ago we purchased stocks of biros for resale to members. They proved popular, but were a bit of a headache in stock control, particularly where they were used at field days and events like shows. We still however, get requests for them and it was coincidental that we recently had a traveller call at the office with a line of what we consider very good quality biros.

It has occurred to us that members might like the opportunity of buying on 'forward order' providing we can get sufficient support. To do this we would need to sell in package deals — say a minimum of 10, (and upwards in the same multiple).

The biros we saw were of excellent quality and refillable of the 'Rubidor' brand. Prices would be around \$1.50 to \$1.75 depending on the order placed. They would, of course, have the Simmental symbol or wording in the transparent lower portion. These would be an ideal selective handout as they are a quality article and something most people would appreciate and keep.

If you are interested would you please let us know how many you would take (in multiples of ten), and depending on orders indicated we will obtain the best price we can. It is not our intention to hold stocks at the office as control and servicing is time consuming and uneconomic.

# Junior Membership

## Junior Membership

Well, another year is well on the way. I hope everybody is enjoying 1983 — both the school work and the holidays.

Quite a period has passed since the last issue of the magazine and during that time the official results of the Junior Herdsman's Award were announced. The winner was Wilma Eccles of Te Aroha in the Waikato. It was a well deserved win for Wilma, who is an extremely competent cattle handler and an enthusiastic Junior Member. Congratulations, Wilma.

This issue we have a letter from an Australian Member, Andrew Almond, plus a 'spot the difference' quiz to keep everyone occupied.

We also have another competition. This is a 'Design a Competition' competition. It is not as confusing as it sounds. All you have to do is make up a competition that you think would interest the other members. Two classes will be involved; Juniors, or those under 12 years of age and Seniors, for the over 12 year olds. The closing date is August 31, so you have a couple of months to think of something.

Look forward to hearing from you all.

Regards,

Sandra.

'Dear Sandra,

I am sorry I haven't written sooner, but I haven't found time. I have been working at the shows very hard. At Tamworth Show there was a dinner dance for the Simmental Breeders and Exhibitors. I won a sheepskin rug and it keeps me warm in winter.

My Jerseys are very well. The cow called Daisy has had her calf and it is a heifer called Felicia. Daisy is going to have another calf and I hope it is a bull.

I am working very hard with my violin now that I am in an orchestra. I have to practise a lot of harder pieces. At the moment I am working on a piece called "Eline Kleine Nachtmusik Serenade" and I am finding it difficult.

I am very sorry to tell you that my turtles, Harold and Victor have vanished and we have been looking for more ever since.

We have a lovely grey donkey called Ice Cream and he is getting on very well with my horse Silver.



From: Andrew Almond, Singleton, N.S.W.'

# simbeef



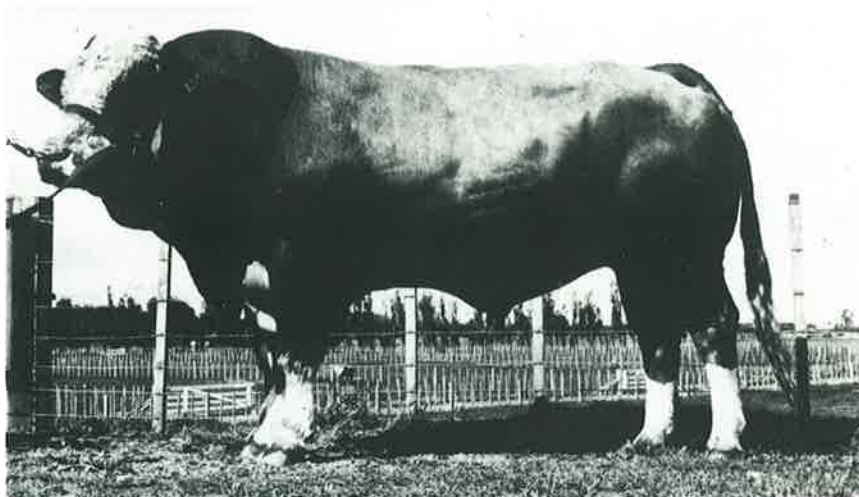
\* A puzzle for people with patience, a sharp eye for detail, and a few minutes to spare. You have to pick the differences between the two illustrations. The one on the left is the original, and ten alterations have been made to the other picture. When you've found them check with the answers on page 11.



"HE wants a cowboy suit for his birthday!"

SEMEN WILL BE AVAILABLE FROM THESE:  
***NEW SIMMENTALS FOR 1983***

Born: Sept. 9 1978  
Sire: Balig Agent  
Dam: Elagmore Elma



**USE FOR  
TROUBLE-FREE  
CALVING**

**'LJB JADE'**

***SIX TIMES WINNER OF THE MEAT AND WOOL CUP***

**BRUNDISH LARS**

Born: June 5 1981  
Sire: Solway Adonis  
Dam: Sandra (Imp. A. 1975)

**OFFICIAL MLC WEIGHINGS**

Birth	100 Day	200 Day	300 Day	400 day
57kg	212kg	384kg	530kg	706kg

OFFICIAL DAILY WEIGHT GAIN: 1.6kg

**SEMEN IMPORTED FROM SCOTTISH SEMEN SERVICES**

**BAR 5 MR. BEST 302N**

Born: March 26 1981  
Sire: Cet Extra Best 87K  
Dam: Miss Lakeside IH

Birth Weight: 52kg  
200 Day: 426kg

**MR. PR (POLLED)**

Born: Feb. 27 1980  
Sire: Extra  
Dam: Silver Vanity

Birth Weight: 51kg  
205 Day: 354kg  
Hip Height: 12½ months — 56½"

**SEMEN IMPORTED FROM WESTERN BREEDERS SERVICE CANADA**



**Guthrey Breeding Services**

MAIN ROAD P.O. BOX 97, KAIAPOI, N.Z.  
PHONE: KAIAPOI (0327) 6175  
TELEX NZ 4243

P.O. BOX 1339, HAMILTON.  
PHONE (071) 80190

A Division of Guthrey Holdings Ltd

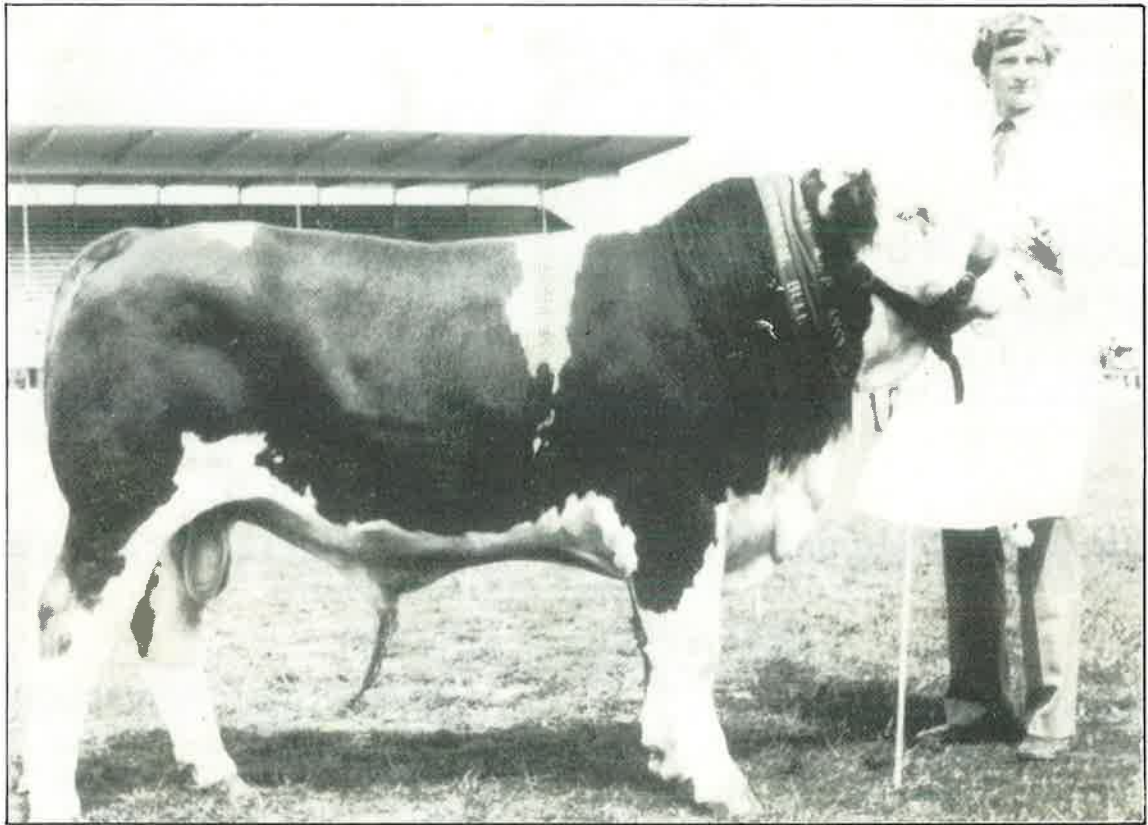




# THE LEVELS



FOR SELECTION OF SIMMENTALS FROM AN ESTABLISHED  
DAM HERD OF VARIOUS BLOODLINES OUTCROSSED  
WITH LEADING SIMMENTAL SIRES.



LEVELS MONARCH 3/AM15

***JUNIOR CHAMPION BULL***

***1982 ROYAL SHOW CHRISTCHURCH***

**1982 N.Z. Royal Show Winners — 'LEVELS MONARCH'  
by 'SCOTTISH EXTRA SPECIAL' Junior Champion Bull out of  
MINISTOWN EPISODE (Imp. Ireland)**

MONARCH and Five Other Top Bulls will be for sale at the National in  
Christchurch.

For private sale we have Stud & Run Bulls also a range of Heifers all  
worthy of your inspection.

**ENQUIRIES AND INSPECTION WELCOMED  
RODNEY COX — THE LEVELS — No 4 R.D. TIMARU  
— PHONE Timaru 82-418**