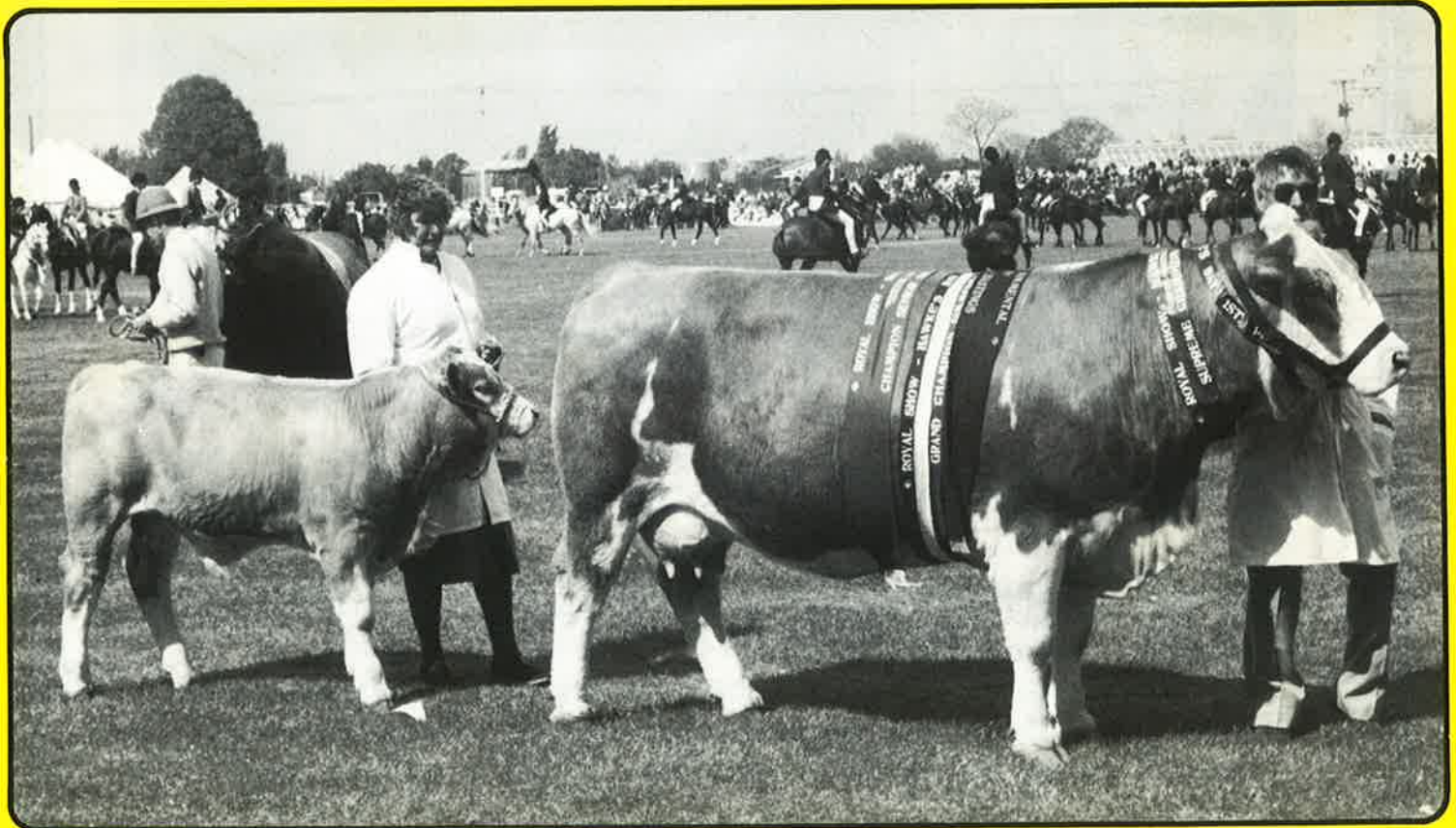


new zealand simmental



**1983 N Z ROYAL SHOW
MEAT & WOOL CUP**



summer issue-december 1983-number twenty

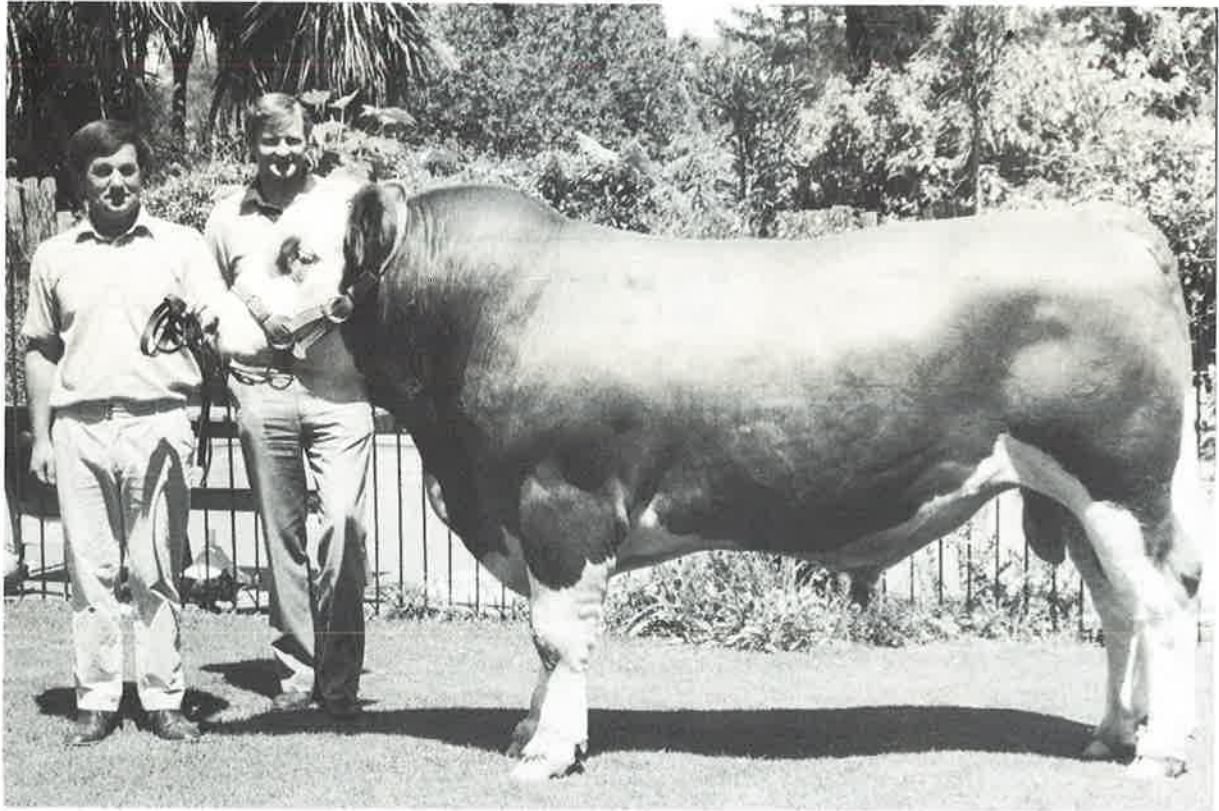


THE LEVELS



FOR SELECTION OF SIMMENTALS FROM AN ESTABLISHED
DAM HERD OF VARIOUS BLOODLINES OUTCROSSED
WITH LEADING SIMMENTAL SIRES.

NEW HERD SIRE....



'RISSINGTON MAJOR', GRAND CHAMPION BULL, 1983 N.Z. ROYAL SHOW
PLACED 4th IN MEAT & WOOL CUP. (At Halter: John Absolom, Rodney Cox)

Purchased in Hawkes Bay from well known Simmental Breeders John & Star Absolom of Rissington Station, 'Rissington Major' is a grandson of internationally known Sire 'Extra' (Canada). His Dam is by Bavanan SV.. 'Major' joins the Levels Stud as senior herd sire. His current weight is 925 kilograms and he is very well muscled with perfect balance and an excellent temperament. His ranking as a yearling was 14/76 and at two year 1/76.

ENQUIRIES AND INSPECTION WELCOMED
RODNEY COX — THE LEVELS — No 4 R.D. TIMARU
— PHONE Timaru 82-418

THE SIMMENTAL CATTLE BREEDERS' SOCIETY OF NEW ZEALAND (INC.)

118 VICTORIA STREET, CHRISTCHURCH 1, NEW ZEALAND.

P.O. BOX 25-100, VICTORIA STREET, CHRISTCHURCH. Phone 793-166

Contents

Editorial	1
Profile	2
People	3
Sales	5, 6
Simbeef	7, 22, 23
Computer	7
Miscellaneous	8, 23
Royal Show	10, 12, 13
Shows	14, 15
Annual Meeting	16, 17, 18
Obituary	18
Technical	20, 21
Canterbury Club Field Day	24

Advertisers

The Levels
Guthrey Breeding Services
Supermix Stockfoods
Heywood Esquire
Pendeen Stud
Simbeef
East Dome Stud
Pukekohu Stud
'Avon Park' Simmentals
Borthwicks
Rissington Simmentals
Simmental Society of N.Z.

Office Staff

Ian S. Johnstone
(Secretary/Manager)
Phone: Christchurch
(Bus.) 793-166
(Pvt.) 487-572

Mrs Ann Boyce
(Secretary)

Mrs Yvonne Kingsland

EDITORIAL

In our last Editorial a few predictions were made and suprisingly some of these have already bounced the right way somewhat sooner than expected.

The areas affected badly by drought have had quenching rain and the demand for cattle has lifted markedly. Simmentals have had probably the best year since their introduction to this country. Bulls have sold extremely well despite the decreased cow numbers and weaner sales have been phenominal.

To cap an already successful season our success at the Royal Show in Hastings has put the breed more than squarely on the map.

In a situation of achievement and success it his easy to be complacent, but experience has shown that at such a time if the fruits of success are to be harvested a continued effort must be made. This can be done in many ways and we look to individuals and members collectively to promote the breed as and where they can. The ball is currently very much in our court.

Council Members

President:	R. N. S. Cox, The Levels, R.D. 4 Timaru. Phone: Timaru 82 418
Vice-President:	H. R. Lowry, Pukekohu, P.O. Box 2369 Stortford Lodge Hastings. Phone: 86 236
Councillors:	N. J. Barnett, Arohena, No. 7 R.D., Te Awamutu. Phone: Pukeatua 573 J. D. Graham, Waingaro, R.D. Parnassus. Phone: Parnassus 809 J. R. Houlbrooke, South Road R.D. 2 Waipu. Northland Phone: Waipu 15 A. B. Perry, Penny Road R.D. 9, Palmerston North Phone: Rongotea 772 J. R. Sutton, Waihaorunga, R. D. 7 Waimate. Phone: Waihaorunga 878

CHAIRMAN OF COMMITTEES

FINANCE: R. N. S. Cox TECHNICAL: J. R. Sutton
PROMOTION: H. R. Lowry SALES: J. D. Graham

Profile

On the foothills of the Ruahine ranges a few miles south-west of Dannevirke, Colin and Catherine Hutchings farm a most attractive property of 380 acres. The property rises from the road back to the Ruahines and has a commanding view over the plains country south of Dannevirke. The Hutchings took over the property 3 1/2 years ago having moved from a 100 acre dairy farm a few miles away.



Colin decided at an early age that he wanted to go farming, a daunting project without substantial financial backing, but through dedication and hard work he has achieved his ambition, having leased land milked cows and gradually, but surely built up his assets.

The property carries approximately 90 Simmental breeding cows, which range from 3/4 breeds through to purebreds, the herd having been founded in 1974. The stage has been reached where bulls are coming forward for sale each year and when recently seen there were several quality bulls available for sale and a good group of yearlings coming on for next year. Colin carries only a few sheep, but buys cattle in for fattening on a regular basis.



A strong advocate for the Simmental Breed the Hutchings have been regular attenders at Simmental Annual Meetings, Sales and all things Simmental. Their herd is now at the stage it is becoming of consequence in the area with an excellent standard of cattle, which will present good entries for future Sales and subsequently the showing. It is a good example of what can be done in ten years starting from a grading up system.



Colin and Catherine have a family of four, three girls and a son, Nigel, who is currently completing an agricultural course at Flock House, before coming home to help on the family property.



Guthreys

A.I. TRAINING COURSES

Designed to train farmers to inseminate their own cows.

Courses held at Christchurch during Autumn/Winter 1984.

Write for further information to:

**GUTHREY BREEDING SERVICES,
P.O. Box 97, Kaiapoi or
PHONE KAIAPOI 6175**

Please send information to:

Name: _____

Address: _____

THE OFFICE

This year we have had a few changes in the Office with some restructuring to implement economies in an ever escalating overhead spiral. Paddy Archer, who has worked for us on a part time basis (and often full time), has terminated her spell with us. We miss her and are most grateful for the time and dedication she gave to the job while she was with us.

Ann Booth, who has now been with us for over nine years has become 'Secretary' with the Editor's change in title to Secretary/Manager. Yvonne Kingsland is now a full time staff member and concentrates mainly on the computer programme.



The year has not lacked interest in the office and members who know Ann will be delighted to learn of her marriage on Thursday the 10th of November to Warren Boyce, who is the General Manager of a well known Canterbury Timber Co. Ann was widowed two years ago and Warren also lost his partner about the same time. We are delighted to see this happening to these excellent people and wish them every happiness. Ann will continue with her job as my Secretary, as well as looking after Warren and their amalgamated family of six children!



AUSTRALIAN SIMMENTAL MANAGER RETIRES

Ian L. Bonifant, Manager of the Australian Association for seven years retired at the end of July after a working life connected with the livestock industry. A New Zealander, Ian was with Dalgetys before the war and moved to Australia with the Company on his return from overseas. He served in several States in Australia before becoming General Manager in N.S.W. from which he retired in 1976. A top administrator, his life has been people and his tact, wisdom and charm have made him highly popular on both sides of the Tasman.

The Australian Association and its members will miss 'Boni', as he is affectionately known. So too will the



THE LEVELS PROMOTION AWARD

Pam and Alister Duncan of Mossburn in central Southland have been strong and enthusiastic supporters of the Simmental Breed and the Club concept since they started in 1975. There have been few major projects involving Simmentals over the years in which they have not participated. They have been strong sup-



porters of both our South Island Sales and our major annual Show at Canterbury. In Southland they were the enthusiasts who led to Simmentals being shown at Gore and Invercargill. Great advocates for the Breed, through hard work and intelligent approach, they have made a success of it and their enthusiasm has 'rubbed off' in many areas and to many people.

It is with pleasure we record the award of this prestige trophy to the Duncan family, a most deserving reward for a job well done.

New Zealand Society, who have got to know him so well through liaison between the offices and his annual visits to N.Z. We take this opportunity of thanking Ian for his always friendly co-operation and help and wish him well in his well earned retirement. We hope that his visits to us will continue, but that they will be a little more relaxed with time to spare.

His replacement in Australia is Mr Rupert Simpson who also comes from a strong livestock background having served in the Stock and Station industry and rural enterprises for a number of years before becoming Manager and Executive Officer for the Australian Angus Association. We wish Rupert every success in his new position and look forward to a continuance of the very close association we have with Australia.

Food For Thought...

Performance animals and specialised stock demand a high vitamin and mineral diet. Severe deficiencies of the essential vitamins and minerals soon appear with obvious symptoms. However, sub-optimal levels may show no visible signs apart from general slow growth, poor performance and often greater susceptibility to disease.



Animals are born with little or no reserves of the fat soluble vitamins A, D and E, and depend totally on the intake of colostrum, supplied by the mother during the first few days immediately following birth. The concentration of these vitamins within the colostrum is directly related to the mother's diet during pregnancy. A deficiency in the intake of carotene, due to poor quality forage or grazing under drought conditions will result in insufficient Vitamin A being passed on to the new born animal through the colostrum. Young animals deficient in Vitamin A are far more susceptible to scours, colds and pneumonia. Correct vitamin status within the animal reduces the incidence of these often costly problems.

Vitamin D is closely involved with the absorption of calcium from the intestine and also assists its movement around the body, aiding the formation and growth of the bones.

Similarly, the trace elements, iron, magnesium, cobalt, copper, iodine, manganese and zinc are all, in various degrees, involved in the metabolic functions within the animal.

Iron and copper help reduce the incidence of anaemia by aiding the synthesis of the haemoglobin pigment in the blood. Manganese and zinc ensure good bone structure, hoof formation and assist the prevention of skin disorders. Cobalt is of particular importance, as the natural synthesis of Vitamin B12 is dependent upon a dietary source of cobalt. Deficiency of Vitamin B12 is well known in sheep and cattle and is often referred to as rough coat and emaciation.

Whilst natural forage and grazing under sunlight conditions will meet most of the animals requirements, adverse conditions of weather, poor quality feed, and also during and after birth, vitamin requirements increase dramatically.

Supermix have developed a complete range of highly palatable, easily digested stockfoods to meet and better these requirements.

Supermix stockfoods are a totally balanced food, high in carbohydrates and protein and containing all the essential vitamins and minerals for natural healthy growth.

Supermix stockfoods are protected with a proven antimicrobial-antifungal food preservative to inhibit the proliferation of:—

1. Salmonella and other endotoxin-producing bacteria.
2. Mould-producing aflatoxin and fungal mycotoxins.
3. Fermentation producing micro-organisms such as yeast etc.

Supermix stockfoods are coated with naturally sweet liquid molasses

"STOCK JUST LOVE IT."



**SUPERMIX CALF GROWER FEED — SUPERMIX DAIRY FEED
AVAILABLE FROM ALL LEADING
STOCK FOOD RETAILERS.**

MANUFACTURED BY D. H. DICKIE & CO. LTD. MARTON

SIMMENTALS SELL STRONGLY IN SCOTLAND

The bull sales in Perth, Scotland in October are a big event in the British cattle calendar. This year saw Simmentals sell in the largest number ever and at record average prices. A total of two hundred and two sold at an average of \$1,981 (NZ\$4,437). Top price was paid by Avoncroft Cattle Breeders Ltd., (which is known in New Zealand through the 'Avoncroft' prefix) of NZ\$16,800. This bull had the highest 400 day weight for a performance tested entry and recorded at 740 kg. It was of interest that performance tested bulls were keenly sort by commercial breeders and forty-six of these bulls averaged NZ\$5,074 to take a premium over non-performance tested bulls of NZ\$824.

Simmentals in U.K. are finding increasing favour for use as a terminal sire (and this is virtually all dairy beef) and also as a cross breed cow used as a suckler feeding a number of calves.

LARGE DISPERSAL SALE IN AUSTRALIA

One of the largest dispersal sales of pedigree cattle ever held in Australasia took place recently out of Melbourne, Victoria. 'Terrangaville' the stud property for a large syndication company dispersed its entire purebred Simmental herd due to the winding up of the organisation. A total of 477 lots were auctioned over two days for an average price of A\$1,353 and a gross turnover of \$605,000. The Sale was unreserved and resulted in a 100% clearance of all lots.

106 purebred cows and calves averaged A\$1,900 with a top price of A\$4,500.

64 purebred mated heifers averaged A\$1,280 with a top price of A\$5,000.

90 unmated heifers averaged A\$869 with a top price A\$5,200.

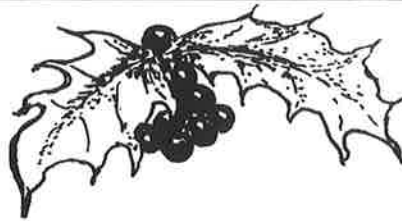
105 purebred calves with their receipt cows (transplant calves) averaged A\$1,302 with a top price of \$3,250.

82 purebred bulls averaged A\$996 with a top price of \$2,800.

Buyers came from as far north as Queensland and the clearance of all lots in this mammoth offering demonstrated the demand that exists in Australia for Simmental cattle. The Terrangaville herd was based almost entirely on cattle born by transplant in New Zealand and exported to Australia.

SIMMENTALS 'BOOM' IN U.S.A.

A news release from the British Association as a result of their Secretary's recent visit to the States reports a tremendous escalation in the American Simmental scene. The American Association has some 13,000 member, an income of US\$1.2 million and a registration tally of 90,000!! — ranking as No. 3 in beef breed society operations. Strongly orientated to performance and measurement it is a condition of registration that every animal has a weaning weight.



CHRISTMAS GREETINGS

To our members, wives and families and all those other people with whom we have association during the year, may we take this opportunity of saying thank you for your co-operation, help and hospitality during the year.

Every good wish to you all for a Happy Christmas and a successful 1984 from those at the Society Office.

Jan Johnstone

Ann Joyce

Yvonne Kingsland

Heywood Esquire

WILL GIVE YOU PROBABLY THE BEST FLESHED CALVES YOU'VE EVER SEEN.

Official Australian A.B.R.I. computer figures show Heywood calves with 1.22kg daily weight gain at weaning and NO supplementary feeding.

**HEYWOOD ESQUIRE
SEMEN EXCLUSIVE
TO GUTHREY
BREEDING SERVICE
Kaiapoi (0327) 6175
Hamilton (071) 80190.**



"... the Best of British to you."

Sales

1983 SIMMENTAL SALES A GREAT BOOST TO THE BREED

Two annual Society sponsored Sales recently held in Christchurch and Palmerston North proved highly successful with averages above 1982 Sales and a strong support from the commercial breeders sector.

At Christchurch on the 16th June thirty-nine bulls and seven females were offered resulting in a total clearance with the exception of the heifer which did not meet the vendors reserve. Top price was an outstanding \$12,000 for a two year old bull offered by D. S. Crosson of Gordons Valley, Timaru. This young sire was Grand Champion Simmental Bull at the 1982 Royal Show and was purchased by Mr Warren Harwood of Kaiapoi who has a small stud over which he will use him as herd sire as well as showing him competitively. The price realised is a record for a Simmental bull at auction in New Zealand.



"Risinghole Brigadoon II" held by vendor Stan Crosson and purchasers, Warren and Barbara Harwood.

The next highest price was \$5,200 for a bull offered by Robot Simmentals of Winton. Twelve others made between \$3,000-\$4,000. the average for the Sale was \$2,820 for bulls the majority of which went to commercial breeders. Females which apart from two were of average quality realised \$908 per head. At Palmerston North on the 21st June a smaller catalogue was offered and twenty-five bulls averaged \$2,440 with a top price of \$5,000 for a very correct animal offered by Mr Werner Cut of Kaponga. This bull was purchased by Mr M. H. Gray of Taihape and will be used commercially. Again many of the sales made were to the commercial sector. Seventeen lots made in excess of \$2,000, five being over \$3,000. A small offering of females was put forward of which only the top few sold. One excellent animal did not meet vendor reserve.

The result of both these Sales was a strong demonstration of impact the breed had made in the commercial sector of the beef market, particularly at weaner Sales. Of the sixty-four bulls sold over forty are known to have gone to commercial breeders for cross-breeding.

On the day following the Palmerston North Sale a private sale was held at Rissington, west of Napier where Mr J. P. Absolom held his first annual Sale on his

property. Mr Absolom has over recent years become widely known in the Simmental breed (and others) through this success in the showing with 'LJB Jade' who has won six Meat and Wool Cups including the 1981 Royal.

Mr Absolom offered a catalogue of forty-two rising two year old bulls selected from one hundred and forty bull calves born in his 1981 calf drop. The bulls offered were of both purebred and percentage blood status and put forward in commercial or run bull condition. On a perfect day before a gallery of near five hundred people they met an exciting market. Twenty-one purebreds averaged \$3,119, fourteen seven-eighth bred \$2,371, seven three-quarter bred \$2,471.

The highest price paid was \$5,500 for a herd sire purchased by Mr G. G. Pearce of Putaruru. Six purebred weaner heifers of quality averaged \$1,416. The Sale was over in sixty minutes and a number of prospective purchasers went away empty handed. Almost all bulls went to the commercial sector.

In summary one hundred and six bulls were offered and sold at auction in six days at an overall average of \$2,611 per head, an achievement for any breed.

simbeef

symbol of progress

PENDEEN

HORORATA

**PENDEEN SIMMENTALS ARE
CONSISTENT WINNERS . . .**

- * 1982 ROYAL (Canterbury)
RES. JUNIOR CHAMPION BULL
RES. JUNIOR CHAMPION HEIFER
- * 1983 CANTERBURY
JUNIOR CHAMPION BULL
'Pendeen Nevada'

**Young Stock Available
from Proven Dams at Pendeen**

**MRS J. C. HALL, PENDEEN, HORORATA
PHONE 873 HORORATA**

SIMMENTALS DOMINATE 'RALGRO' COMPETITIONS

The 'Ralgro' competitions at weaner sales throughout the country have now been going for a number of years. Promoted by Cooper Welcome N.Z. Ltd, the contest is run at 65 selected weaner sales throughout the country, which are nominated by the Stock and Station Agents Association in each area.

This year Simmentals have had an exceptionally good round and in the top ten of the 65 winning pens (nationwide) 70% have been Simmental Cross. Twelve sales were in fact topped by Simmentals with an average of \$287 in the N.I. and \$260 in the S.I. The top price was \$318.

The winners of each sale are placed in a draw for the major prize of the competition (\$1000) and this year Sim Brothers of Santoft near Wanganui were the delighted winners. We congratulate those who won and those others who participated. Known Simmental breeders, who were successful entrants were: S. Rozema, Te Puke; W. Leslie, Owaka; D. Brownrigg, Waipukurau; H. McIntyre, Feilding; Otematata Station, Omarama; E. J. Parr, Temuka, Sim Bros, Santoft; B. Hurst, Waimate.



The Sim family: George and sons, Tony, Lindsay and Robin; David (George's brother), Clive Biggard of Cooper/Welcome, and Graham Cade, Stock Manager of Crown Farmers, Wanganui.

**TATTOO YEAR
LETTERS...**

1982 = N

1983 = P

Each issue we write something on the Computer — each issue we have more confidence in our statements. The system is really settling down and our members are in the main handling the paperwork extremely well. We still have a few hassels and probably would with any system, but we have now got most things sorted out and patterns are becoming familiar to us all. One of the most important things to us and you, our members, is to get things done on schedule and with this aim we have drawn up a 'calendar' of computer events, which is being sent out to all breeders. **Please** do your best to get things done on time and in sequence and don't leave things until the last moment as it causes pressure spots in our office workload. If your Calf Entry Sheet is ready, let us have it so we can process it when it arrives instead of being faced with an 'avalanche' on the last few days of the schedule.

We have been pretty forgiving on late fees, but our attitude must change in the coming season as 'late-comers' disrupt the whole system and they will pay the penalty in future — an unpleasant situation for us and the culprit.

We thank you for bearing with us in what has been a difficult implementation of the system, but they are now working well. A considerable number of members have taken advantage of the performance extension of the pedigree system and we hope this will continue. A separate article is included in this issue outlining the advantages of performance recording.

RECORDING OF CALVES

On your Calf Entry Sheets your breeding cows are pre-listed and there is provision for entry of every calf born. A number of members only record those calves they wish to register leaving blanks against those calves which they don't register. We urge breeders to enter **all** calves regardless — it costs no more and has the very distinct advantage of giving the cow a productivity index. Simply, this means that the computer can list against each breeding female the important fact that she has bred a calf each season. If you don't record all your calves you could have e.g. an eight year old cow with only three calves, which doesn't do much for her, or you.

WHICH VARIETY ARE YOU???

Are you an active member, the kind that would be missed,

Or are you just contented that your name is on the list?

Do you attend the meetings, and mingle with the flock;

Or do you simply stay away then criticise and knock?

Do you take an active part and help the work along;

Or are you satisfied to be the kind that just belong?

Do you push the cause along, and make things really tick;

Or leave the work to just a few, then moan about a 'clique'!

Think it over, member, you know the right from wrong;

Are you an active member, or do you just belong?

Miscellaneous

FEAST OR FAMINE

'You are what you eat' — an old and fairly wide statement, but one that has certain elements of truth. The same yardstick can be applied to livestock particularly in the formative period when an animal is growing to maturity.

With any young animal its rate of growth will be governed by the feed available. In the Simmental it is a known attribute that the breed produces both meat and milk resulting in a fast growing and vigorous calf. As anyone will know, a cow that has poor milking ability will produce an indifferent calf. It is important therefore, that a cow suckling, has access to the best of what is available. Likewise, it is most important that a calf, once weaned, continues to be fed adequately. If a young animal is hard done, invariably the result will be an animal lacking size and stature at maturity and while it will be possible to 'put condition on' it will always reflect its deprived youth.

Perhaps an animal's most important period is through the first winter as a yearling when feed is at its shortest. In the colder areas some supplementary feed is a necessity if the upwards curve of growth and development is to be maintained. At this stage an animal low in condition is also more prone to parasites and digestive infections.

These factors are important to any breeder of livestock and particularly so to anyone who is producing commercial bulls for sale or cattle of stud status. If cattle are to reach a saleable age where they can be described as 'well grown out' they must have been reasonably fed to compete on what has surely become a discerning market.

The show ring and the Stud sale are a totally different exercise and should not be confused with the comments made. What is said is relevant to cattle in general, good stockmanship and common sense. If your objective is to produce sound well grown cattle then your objective must also be to feed your young stock, as is necessary, as without doing one you are most unlikely to achieve the other.

RECORD PRICE FOR SIMMENTAL BULL

At the beginning of November John Absolom of Rissington in Hawkes Bay made a sale which realised one of the highest prices recorded for a Simmental bull in New Zealand. A two year old bull 'Rissington Major' a grandson of the well known 'Canadian Extra' was from a cow by 'Bavarian S.V.' sold for \$20,000 to Mr Rodney Cox of the Levels Stud at Timaru. 'Major' was Champion Simmental bull at the Royal Show in Hastings and was also placed fourth in the Meat and Wool Cup in strong competition. A very well grown and structured bull 'Major' has excellent muscling and is beautifully balanced — indeed a bull that is very difficult to fault. He will become senior herd sire at the well known Levels Stud and we will doubtless see something of him in the Showring next season. Mr Cox first saw this bull at the Royal Show where he judged the Simmental classes. He was sufficiently impressed by his quality to return to Hawkes Bay a few days later and conclude the transaction.

SOUTH CANTERBURY CLUB PROMOTE BEEF DAY

The South Canterbury Simmental Club embarked on a well structured project to promote beef production and Simbeef at an open day held at the Temuka selling centre just north of Timaru in mid-July. John Howie, Club President and his wife, Allison (Secretary), worked hard with a small Committee to set up what proved to be a most successful day attended by nearly a hundred people, who came from as far south as Oamaru and from most districts in the South Canterbury area.

The day started with coffee followed by a screening of the Society's slides on the 'Cutability of Beef Cattle' which were presented by Councillor Don Graham. People then moved to the Saleyards selling rostrum where five pre-selected steers had been assembled for assessment. Stock judging cards were issued and everyone 'had a go' at placing the animals in the correct order in line with the message given in the slides shown. This proved a difficult task to some extent, as there was not a great variance in the cattle which had proved hard to obtain at that time of the year. It did however give plenty of opportunity for active discussion. At midday the meeting broke for lunch, which was followed by 'adjudication' by Oakleigh Osborne of Leeston, who was one of the selectors of the cattle. Oakleigh skilfully demonstrated the attributes and variable characteristics of the animals at the conclusion of which he announced the winners of the assessments.

The Sutton family of Waihaorunga had a good day and the Lady's prize was won by Sheila, (wife of Councillor Jim) and the Y.F.C. prize was won by their son, Jeff. The open prize was won by Tony Lee of Oamaru.

The day was concluded with a panel discussion on various aspects of the beef cattle industry with representatives of meat companies, stock firms and the farming community. This session was somewhat 'inhibited' by extreme cold, which drove some people home early. In retrospect the day was well worthwhile and congratulations and thanks go to those people who did the organising and participated in many ways. The promotion of 'beef' and the fostering of the right type of carcase is of value to any beef breeder and it is a considered bonus that the Simmental fits well in what the exercise is about.

simbeef

symbol of progress

CATTLE NOSE CLIPS

A Christchurch supplier has a limited stock of small size spring nose clips (to which a lead rope is attached) suitable for heifers and calves. These are U.K. manufacture and cost under \$5. A useful thing to have on hand when teaching young stock to lead. Enquiries to the Secretary.

simbeef

symbol of progress



The marketing of
commercial
beef cattle by
identification



EAST DOME STUD

(Herd No. 901)



A selection of young stock available this season. Inquiries and Inspection Welcome
W.A. ROUSE, EAST DOME, FIVE RIVERS, R.D. 3, LUMSDEN
PHONE LUMSDEN 86R.

Royal Show

1983 ROYAL SHOW, HASTINGS

The Hawkes Bay A. & P. Showgrounds is probably one of the best in the country being endowed with plenty of space and beautiful trees. A Royal at Hastings is a memorable event.

For Simmentals in 1983 this was certainly so, surpassing any previous Royals. The Breed won all inter-breed competitions, notably the Meat and Wool Cup, the All-Breeds Yearling competition and the All-Breeds Beef Export competition. Heady stuff at any Royal, but even more so in Hawkes Bay, an historically strong area for both Angus and Herefords.

Robin Lowry of Hastings with his magical cow 'Irish Empress' won a Royal Meat and Wool Cup for the second time (her first at Hamilton in 1980). Supported by a first class bull calf she made no mistake about it, beating her nearest competitor by 24 points in being awarded 44 out of 54 maximum. Eight years old and natural mother of eight calves she is a tremendous example of what a cow should be.

'Empress' also won the Beef Export competition, which is for cows with calf at foot, the basis of the competition being the animal most suitable for breeding export beef. If the Lowry family were a little more than ecstatic could you blame them!

To round off the 'hat-trick' a virtual newcomer to the Showring, Neil Barnett of Arohena presented a first class yearling bull to win the Yearling All-Breeds Class.

'Empress's' Meat and Wool Cup win gives the Simmental Breed three wins at the Royal in four years. It was of note that her calf at the Show was by L. J. B. Jade, Royal Meat and Wool Cup winner in 1981.

It was hoped this year that the Coopental Performance Class might have been opened to an inter-breed competition, but a Royal Show produces great pressures on the host association and space and time slots did not enable it to happen. The class was however well patronised and we were most favoured by the generous sponsorship of Thomas Borthwick and Sons (A'Asia) Ltd, who donated \$500 for cash prizes and overheads and of Cooper/Welcome who provided product prizes in the form of 'Systemex' for place getters in each division. The heifer section resulted in 1st places for A. H. and G. M. Thompson, with an excellent heifer, 'Glen Anthony Nina' (Junior Champion) and the bull section was won by N. J. Barnett with 'Coopental Napoleon' (Junior Champion and Winner of Yearling All-Breeds). The two winners were judged in the ring by the breed judge resulting in the Thompson family winning the Coopental Challenge Trophy.

The class, now in its fourth year is proving to be well supported and with an ever increasing number of people performance recording we expect it to be one of the most meaningful classes at the Royal in years to come. It proved this year that not only were the winners good show animals, but they had performance behind them as well.

Simmental entries came forward in excellent Show order. The main echelon came from Hawkes Bay, but three exhibitors travelled from other areas, Ray Nicholas from Hawera, Neil Barnett from Te Awamutu and Warren Harwood all the way from Canterbury. The

Breed Judge this year was Rodney Cox, Society President of the Levels, Timaru.

Exhibitors were:

H. R. Lowry, (Pukekohu Simmentals), Hastings.

J. R. and S. Absolom, Rissington, 4.R.D., Napier.

A. H. and G. M. Thompson, (Glen Anthony Stud), Waipukurau.

R. G. Nicholas, 4 Gore Street, Normanby, Taranaki.

R. Wallace, Arahi Farm, R.D. 4, Raupunga.

N. J. Barnett, Arohena, R.D. 7, Te Awamutu.

B. I. Harding, R.D. 3, Waipukurau.

W. Harwood, Fernside, North Canterbury.

CLASS RESULTS:

Class 292: Cow and Calf (Over 3 years)

1st 'Irish Empress', Sire: Hans. H. R. Lowry

2nd 'Peastons Kate', Sire: Ravensworth Effigy.

A. H. and G. M. Thompson.

Class 293: Cow and Calf (3 years)

1st 'Glen Anthony Limelight', Sire: Scottish Senator. A. H. and G. M. Thompson.

Class 294: Heifer (2 years)

1st 'Rissington Marge', Sire: Argos. J. P. and S. Absolom.

Class 295: Senior Yearling Heifer

1st 'Glen Anthony Nina', Sire: Glen Anthony Jupiter. A. H. and G. M. Thompson.

Class 296: Junior Yearling Heifer

1st 'Mossy Fleur', Sire: Mossy Brendon. R. G. Nicholas.

2nd 'Glen Anthony Nora', Sire: Glen Anthony Jupiter. A. H. and G. M. Thompson.

3rd 'Rissington AM244', Sire: L. J. B. Jade. J. P. and S. Absolom.

Class 297: Pair of Yearling Heifers

1st J. P. Absolom (Rissington AM173/AM244)

2nd A. H. and G. M. Thompson (G.A. Nora/G.A. Nina).

Class 298: Bull (Over 3 years)

1st 'Coopental Lopez', Sire: MMB Herman. N. J. Barnett.

Class 299: Bull (3 years)

1st 'Pukekohu Marquis', Sire: Bavarian. R. Wallace.

2nd 'Risingholme Brigadoon 2nd', Sire: Bavarian. W. Harwood.

3rd 'Glen Anthony Lustre', Sire: Avoncroft Aster. A. H. and G. M. Thompson.

Class 300: Bull (2 years)

1st 'Rissington Major', Sire: Rissington Extra. J. P. and S. Absolom.

2nd 'Rissington Monitor', Sire: Polled SBL. J. P. and S. Absolom.

3rd 'Sherwood Special', Sire: Scottish Extra Special. J. P. and S. Absolom.

Class 301: Senior Yearling Bull

1st 'Coopental Napoleon', Sire: Coopental Lopez. N. J. Barnett.

2nd 'Glen Anthony Noble' Sire: Glen Anthony Kirky. A. H. and G. M. Thompson.

Class 302: Junior Yearling Bull

1st 'Glen Anthony Newry', Sire: Glen Anthony Kirky. A. H. and G. M. Thompson.

2nd 'Woodstock Nigel', Sire: Scottish Senator.

Royal Show

B. I. Harding.

3rd 'Pukeohu Napoleon', Sire: Extra (C.S.A.).

H. R. Lowry.

Class 303: Yearling Bull and Heifer

1st A. H. and G. M. Thompson

2nd A. H. and G. M. Thompson

Class 304: Group Bull and Three Females

1st A. H. and G. M. Thompson

2nd J. P. and S. Absolom.

Class 305: Sire Progeny Class

1st Glen Anthony Stud, A. H. and G. M. Thompson.

Class 305A: Coopental Performance Class

Cash prizes sponsored by Thomas Borthwick and Sons (A' Asia) Ltd.

Heifers:

1st 'Glen Anthony Nina'. A. H. and G. M. Thompson.

2nd 'Rissington AM244'. J. P. and S. Absolom.

3rd 'Arahi Farm Nina'. R. Wallace.

Bulls:

1st 'Coopental Napoleon'. N. J. Barnett.

2nd 'Glen Anthony Newry'. A. H. and G. M. Thompson.

3rd 'Glen Anthony Noble'. A. H. and G. M. Thompson.

Overall winner 'Glen Anthony Nina'

CHAMPIONSHIPS/TROPHIES

Senior Champion Cow and Grand Champion Female — 'Irish Empress'. H. R. Lowry.

Reserve Senior Champion Cow — 'Peastons Kate', A. H. and G. M. Thompson.

Junior Champion Heifer — 'Glen Anthony Nina'. A. H. and G. M. Thompson.

Reserve Junior Champion Heifer — 'Mossy Fleur'. R. G. Nicholas.

Senior Champion Bull and Grand Champion Male — 'Rissington Major'. J. P. and S. Absolom.

Reserve Senior Champion Bull — 'Coopental Lopez'. N. J. Barnett.

Junior Champion Bull — 'Coopental Napoleon'. N. J. Barnett.

Reserve Junior Champion Bull — 'Glen Anthony Newry'. A. H. and G. M. Thompson.

Supreme Champion Simmental and Winner of the Society Silver Challenge Salver — 'Irish Empress'. H. R. Lowry.

Reserve to Supreme Champion and Winner of the R. H. Kerr Challenge Salver — 'Rissington Major'. J. P. and S. Absolom.

Coopental Challenge Trophy. (Performance Recorded Class). — 'Glen Anthony Nina', A. H. and G. M. Thompson.

PUKEKOHU

**MEAT & WOOL CUP
WINNERS**

**1980 ROYAL SHOW
1983 ROYAL SHOW**



THE ROYAL SHOW 1984

Next year's Royal is in Invercargill — start to think about it now and look your cattle over. There is already a fair contingent making plans to 'pool' transport and expenses for an assault on the deep South. It would be really something to take a Meat and Wool Cup at a Royal in the South Island. Some of you will recall we took second at Christchurch in our first year of showing in 1977.

**H.R. LOWRY
PUKEKOHU**

**Box 2369 Stortford Lodge
HASTINGS
Phone 86-236**



Supreme Champion Simmental, 'Irish Empress' with her is Rodney Cox (Judge), Maya Wuethrich holding the Society Salver and Gay Cox the judge's wife.



Tony Thompson accepts the Coopental Trophy from Gay Cox.



Tony collects another award. Junior Champion Heifer.



A new exhibitor, Rob Wallace from Raupunga near Waiaroa.



Ray Nicholas of Taranaki with his Reserve Junior Champion Heifer.



198 ROY SHO



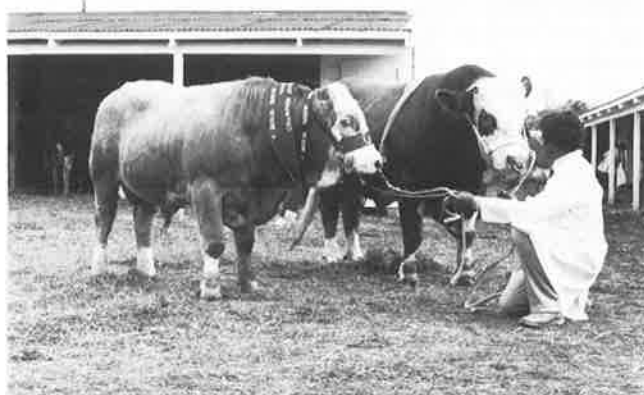
*Top:
An estatic Robin Lowry receives the Meat & Wool Cup
from the Under-Secretary for Agriculture, Mr Austin.
Maya Wuethrich who led Empress in the judging stands
beside her charges.*



Lower:
Meat & Wool Cup winner for the second time at a Royal,
'Irish Empress' looks decidedly calm about the whole
business.



John Absalom's Grand Champion Bull 'Major' is held by John Batson. Presenting the Champion's trophy is the Secretary's wife Gail.



Neil Barnett of Arohena with his Junior Champion Bull and his Reserve Senior Champion. His Junior Bull also won the All Breeds Yearling competition.



Warren Harwood of Canterbury who travelled such a long way to the Show took 2nd in the Senior Bull Class.



Absalom's All. 'Major', 'Monitor', 'Special'. Two year old bull Class. L.R. John Batson, John Absalom, Star Absalom.



Brian Harding of Waipukurau who took 2nd in the Junior Yearling Bull Class.

Shows

CANTERBURY SHOW

The entry at this year's Canterbury Show was down a little probably after a big effort at the Royal held there last year. Local members and one from Timaru still however managed to put nineteen animals in the ring with a good standard of entries. Supreme Champion Simmental went to David and Melinda Carter with their one very good two year old bull by Bavarian. It was the first time the Carters have taken the premier award after eight years of strong support to this Show. Their bull took fourth place in the Meat and Wool Cup. Champion female went to a very good two year old heifer by Siegfried entered by Colin Patterson. In the Junior Classes Mrs Jocelyn Hall took the bull Championship and Oakleigh Osborne the heifer.

It was disappointing for Warren Harwood who purchased the top priced bull at the 1983 South Island Sale, that he was unable to bring his bull forward due to a foot injury.

A summary of class results is as follows:

Class 473: Cow and calf (over 3 years)

1st 'Winfield Kandy', sire Winfield Goliath — O. J. Osborne.

2nd 'Skerrington Rosel', sire Scottish Herod — G. H. Habberjam.

Class 475: Heifer (2 years)

1st 'Springbrook Mandy', sire Siegfried — C. J. Patterson.

Class 476: Senior Yearling Heifer

1st 'Ladburn Nancy', sire Canterbury Ceasar — A. A. T. Partridge.

2nd 'Ladburn Nola', sire Canterbury Ceasar — A. A. T. Partridge.

Class 477: Yearling Heifer

1st 'Winfield Nadia', sire Pilz — O. J. Osborne.

2nd 'Winfield Nellie' sire Marzou — O. J. Osborne.

3rd 'Winfield Nutmeg', sire Pilz — O. J. Osborne.

4th 'Pendeen Natasha', sire Pendeen Konrad — Mrs J. C. Hall.

5th 'Springbrook Charm', sire Aroha Humphrey — C. J. Patterson.

Class 478: Pair of Heifers

1st O. J. Osborne.

Class 483: Bull (2 years)

1st 'Avon Park Majestic', sire Bavarian — D. C. & M. J. Carter.

2nd 'Robot Minstrel', sire Marzou — D. M. Elliot.

Class 485: Group Three Animals By One Sire

A. A. T. Partridge.

CHAMPIONSHIPS/TROPHIES

Senior Champion Cow — 'Springbrook Mandy', C. J. Patterson.

Pendeen Challenge Trophy — 'Springbrook Mandy', C. J. Patterson.

Reserve Senior Champion Cow — 'Winfield Kandy', O. J. Osborne.

Junior Champion Heifer — 'Winfield Nadia', O. J. Osborne.

Reserve Junior Champion Heifer — 'Ladburn Nancy', A. A. T. Partridge.

Senior Champion Bull — 'Avon Park Majestic', D. C. & M. J. Carter.

Harlau Challenge Trophy — 'Avon Park Majestic', D. C. & M. J. Carter.

Junior Champion Bull — 'Pendeen Nevada', Mrs J. C. Hall.

Merck Sharp and Dohme Trophy — 'Pendeen Nevada', Mrs J. C. Hall.

Supreme Champion Simmental — 'Avon Park Majestic', D. C. and M. J. Carter.

Herdsmen Award — John Batson (of England).

PROVINCIAL SHOWS

We receive 'grapevine' reports of shows about the country and recently have heard that our Northland members made their first venture into the showing at Whangarei in November. Apparently they put forward about fifteen animals, which is a well worthwhile effort. Jim Houlbrooke took the Championship with a heifer. Other exhibitors were Geoff Palmer, Terry and Lynn Sloane and Stan and Gay Timpeley, who have all been the backbone of the Club in the area — we congratulate them on their efforts and success.

Since Whangarei Jim Houlbrooke has also been to the Waimate North Show where with a young bull he won the All Breeds class — yet another first for Northland.

Further South at Matamata William Eccles of Te Aroha gave the Breed a boost by winning the All Breeds yearling bull class for the second year in a row.

POVERTY BAY SHOW (GISBORNE)

A small contingent again went through to the Gisborne Show with resounding success. J. P. and S. Absolom won the Meat and Wool Cup with 'Rissington Monitor'. Second place went to H. R. Lowry's 'Irish Empress'. The first time the Breed has been placed 1st and 2nd in a Meat and Wool Cup.

Exhibitors were: H. R. Lowry, J. P. Absolom, Mrs K. C. Wallace, Mr M. F. Moore.

Champion and Reserve Bulls were exhibited by J. P. and S. Absolom.

Grand Champion Female — H. R. Lowry

Reserve Champion Female — J. P. and S. Absolom

Champion Heifer — Mrs K. C. Wallace

Supreme Champion Simmental — J. P. and S. Absolom

THE WORLD CONGRESS — SYDNEY 1984

We have about thirty five people booked for Sydney and the Royal Show in April next year, which is a good delegation.

We also have a good response to visitors on the pre-Congress tour of this Country. At present it looks like about a hundred with main groups coming from Canada, U.S.A. and Africa with a few others from Europe. We are trying hard to finalise numbers at this stage.

Shows



Melinda Carter received the Champion Bull Trophy from visitor Allan Dumaresa of Tasmania. Allan will judge at the Sydney Royal next April.



Jocelyn Hall presents her Champion Cow Trophy to Colin Patterson.



John Batson holds Mrs Jocelyn Hall's Junior Champion Bull and the Merck Sharp & Dohme Trophy, being presented by Mrs Margaret Macdonald.



Jim Sutton goes over points of judging with Mike Satterthwaite, Sue Osborne and father, Oakleigh.



Triple entry from the Partridge family of Ladbrooks. L.R. Lorraine Partridge, George Habberjam, Tony Partridge and Jim Sutton (Judge).



South Canterbury exhibitor, David Elliot of Waimate.



Spectators in 'Simmental corner'

Annual Meeting

1983 ANNUAL MEETING

Forty seven people attended the Society's Annual General Meeting of Members held at the Avon Motor Lodge on Wednesday, 15th June. Mr Cox in opening the meeting welcomed Mr Paul Trenoweth (Junior Vice-President of the Australian Simmental Council) and Mr James Loneragan, also a Councillor from Australia.

The Chairman of the four committees within the Council presented their Annual Reports which are recorded as follows:

FINANCE COMMITTEE REPORT 1983

I have pleasure in presenting the 1982/83 accounts up to March 31st, 1983.

You have received these prior to this Meeting and you will have noticed that we have had a satisfactory result making a very small profit on the working year. Our total income of \$94,744.66 was slightly up on last year, which was mainly due to an increase in income from our investments. Over the year we had kept a close eye on the best rates of interest available and were prepared to shift money accordingly. You will also see that the pre-list fees contributed greatly to maintaining our income. Half of this amount appears on the expenditure side as a pay out to the Computer Centre. Notice must be taken that the taxation we pay on the interest we obtain from Term Deposits is high. This aspect is totally unacceptable to us and due to the inability of Mr Muldoon and Mr Falloon to look favourably at our suggestions we are having to take the matter further by asking the United Breed Societies to apply political pressure. This taxation turns our small profit into a deficit of \$4,543.91.

The schedule of expenditure is again a matter of concern to us and the Council has taken steps through slight restructuring of the office procedures to cut these costs next year. If we can achieve this the Society will be able to hold costs to members. We feel we are still running our Society to cope with eight hundred members, whereas at the moment we have near to three hundred. Members will hear more from the office on this as we streamline systems.

The Balance Sheet shows that our assets have dropped mainly due to the placing of records on the computer. This reserve has been set aside for many years solely for this project. Despite this cost, we have been able to maintain a balance within \$4,700 of last years total members funds of \$100,541.88. On top of this you can add another \$40,000 approximately being the difference in the costs of our shares and the present day value. The shares cost \$40,000 and today's value stands at just over \$80,000.

Overall, the Society remains in a very sound position as far as our assets are concerned. We must once again be mindful of costs. A greater co-operation from a minority of members in assisting the office with correct records will save a tremendous number of man hours checking up on unnecessary problems. I state this constructively rather than critically.

I thank the Finance Committee for the work and thought they have put in over the year. Mr R. H. Kerr,

past President still maintains a very close interest in the breed and its affairs. His wise words on finance are greatly appreciated.

The work of our Accountant, Mr Grahaeme Mars is most appreciated and his advice on various problems is of great value to the Society.

The future looks bright for the breed and cattle generally. I am sure we can capitalise on this and attract new members plus make present members feel a sense of security.

R. N. S. Cox,
CHAIRMAN
21.6.83

PROMOTION COMMITTEE REPORT 1983

It gives me much pleasure to report on the activities and performance of our breed over the past year.

I feel we have had another very successful year. The highlights perhaps have been the prices for weaners up and down the country. Weaner steers have made better than \$300 in many centres with \$362 being the highest at Te Puke. These prices have made beef production again very profitable and comparisons with the economics of sheep production should augur well for again seeing breeding herds building up. It is indeed ironical that there has been a skim off into the buffer accounts for beef whilst an SMP of fifty to sixty cents per kilo is paid on lamb. It does in my opinion highlight the distortions which appear as soon as there is interference in the market place. Beef as always been traded around the world albeit at a price but there has never been any danger of a stockpile. We must impress on the Ministry of Agriculture advisors the economics of efficient beef production and show the place of Simmentals in this scene.

We have in this past year got together with other Breed Societies to push for funding of advertising for the consumption of red meat within New Zealand. We shall continue with this pressure on the Meat Producers Board.

The show season was a successful one particularly with the entry of some new breeders to the showing scene. For the time and effort put into this exercise by breeders I congratulate them. John and Star Absolom won two more Meat and Wool Cups with their magnificent bull Jade bringing his total to five which places him with the all time achievers. In other inter-breed competitions around the country our breed has performed exceptionally well.

The Club scene is reasonably healthy, with some being very strong and yet in some areas there is no activity. The performance of the breed in the market place is the best advertising we can get but we must push simbeef and the use of our tags and I commend the use of our simbeef pamphlets to you. At twenty-five cents they are a good publicity tool.

The use of our slides at Meetings and Clinics has been very successful with the highlight being an excellent Field Day held in Southland, which I hear has already borne fruit in the sale of simmental bulls. I especially thank those breeders who organised — ran these occasions — commend a further education programme for

Annual Meeting

breeders. It is obvious now that the Ministry of Agriculture is embarrassed by its pushing of sheep production and welcomes any information which shows good economics for beef.

The magazine continues to be our communication media and to Ian goes my special thanks for a job very well done. Advertising has picked up and we very much look forward to the day when it is self supporting.

I thank the promotion committee for their contribution over the year — in fact all councillors for the work they have done particularly in their own areas.

To Paddy, Yvonne and Ann go my sincere thanks for their kindness — friendliness to all breeders. To Ian, thank you for your efforts which have involved visiting most areas of the country and keeping in touch with members and bringing back to the fold of some who were slipping away. Many thanks also to Ian's wife Gail, for her hospitality to me and her often unseen contributions to the Society's work.

Finally, I feel the market place will dictate a good demand for bulls, an increase in cow numbers and thus an increase in numbers who will see that breeding Simmentals can be an economic as well as an absorbing interest.

I now formally move the adoption of this report.

H. R. Lowry,
CHAIRMAN
21.6.83

TECHNICAL COMMITTEE REPORT 1983

The computerised pedigree recording system is at last functioning reasonably well. Hopefully the bulk of the teething troubles which seem to be a feature of all introduction of new technology are now behind us. It has not been an easy year, and we should be grateful for the forbearance of our staff, and for the assistance of Paul Harper from Beefplan, who has made his time available to travel from Wellington to sort out glitches in the system. The benefits of greater efficiency, both in the Society office and back on the farm, should become increasingly apparent.

We have a few members whose very human response to the need to master the new procedures has been to do nothing and hope it goes away. As a result they are now behind with their paper-work, as well as still having to grapple with computerised recording. We have a message for these members: the new system is quicker and easier than the old; if you need help, ask and it will be arranged.

There have been one or two grumbles about the institution of the Pre-list fee, and it has been suggested that some people may, for instance, attempt to delete unmated females from their herd listings and re-enter them a year later when they are in-calf. It is important to remember that the pre-list is not just a form on which to register calves, it is an integral part of a total recording system for your entire herd, the use of which is very much in the interests of every breeder. Manipulation of the system in an attempt to deprive the Society of a few dollars would undermine the whole programme. If this occurs it would force the Council to adopt alternative fiscal arrangements, which would not be in members' interests.

The pedigree recording system meshes in with Beefplan performance recording, forming an integrated programme for recording and analysing the essential data for a modern breeding operation. Beefplan itself undergoes continuous development and the services provided are steadily expanded as resources permit. We particularly look forward to the provision of a reference sire facility, as we have found it difficult to make satisfactory arrangements elsewhere for the processing of this data.

The Technical Committee would urge as many members as possible to avail themselves of the services Beefplan has to offer. We would welcome guidance from this meeting, on how hard we should lean on members to performance record.

Possible measures to encourage performance recording of registered Simmental cattle, as defined in the first Object of the Society.

These measures are put forward on a basis for discussion only.

1. Place pedigree recording on computer in such a way as to make performance recording administratively simple for individual breeders.
 2. Offer incentives for performance recording in fee structure.
 3. Amalgamate Society and Beefplan fees, so that those who record performance pay the same as those who do not.
 4. Entry to Society sponsored sales could be restricted to animals from performance recorded herds.
 5. Simply make performance recording mandatory.
- N.B Measure (1) has been effected, and measure (2) partially implemented.

Measure (5) was implemented by the American Simmental Association from the beginning, and other U.S. breed organisations have adopted generally a far more progressive stance on recording than their New Zealand counterparts. South Canterbury Club Members were told recently by one of New Zealand's leading Angus breeders that in his opinion, after many visits to North America, they are twenty years ahead of us in all breeds.

J. R. Sutton
CHAIRMAN
21.6.83

SALES COMMITTEE REPORT 1983

Vendors of all breeds have experienced a very mixed selling season for beef cattle during the 1982/83 season, brought about by wide spread droughts, wet and cold conditions in the far south and fluctuating beef schedules.

However, commercial Simmental farmers have experienced outstanding prices for weaners and older cattle. Market topping prices have been achieved by many of our breeders, prices only dreamed about by our competitors, thus the market place, chiller beef competitions and to a lesser extent the showing still remain our best form of promotion.

Annual Meeting

Because of our performance and contrary to what the exports are telling us, Simmentals will out perform sheep on a stock unit basis. These results must augur well for this season's Sales.

After much discussion, we have changed the format of this year's Society Sponsored Sales. In the past, the order of sale has been determined by Lot, this year, where a vendor has two or more animals they have been divided into two runs in order of age, with all single entries being offered in the first run and each run is then offered in order of age, with the exception of a handful of older bulls, which will be offered at the start of the second run.

Last year's Sales ran at a loss, which the Society carried. This was due to: (a) Low Entries, (b) Expensive Catalogues and (c) On Farm Inspection Costs. To ensure that this will not be repeated, we are now having inspections on Sale day and rather than print large numbers of expensive Catalogues, a pre-Sale pamphlet was produced stating vendor for both North and South Island Sales, age of animals, one generation and selling firm. These were sent to all members and interested parties and resulted in a huge cost saving and, I might add, with very favourable comments coming back to the Society.

Understandably and inevitably, provinces throughout the country will opt to run their own area Sales in the future. As the demand grows the Society would encourage this, but would also hope that any area Sale would not be at the expense of our already established North and South Island Sales, as a few strong priced auctions will always be better publicity than a larger number of only average auctions.

In concluding, I would like to thank Ian Johnstone and his staff for a job well done and on behalf of Neil Barnett, Jim Houlbrooke, Alan Perry and myself wish you all a successful selling year.

J. D. Graham,
CHAIRMAN
21.6.83

In discussion of the Reports several matters were expanded in the general business sector of the meeting. Under the Finance Committee the office systems have already been modified to some extent to curb overheads, one less staff member is employed and with the computer now running smoothly time is being reduced on the system. (At the half yearly balance accounts were within budgets set).

In Technical some lively discussion was held on mandatory performance recording. The Technical Committee replied that they did not wish to enforce anything, rather they wanted to encourage performance recording through Beefplan. Even now more members are expanding into performance recording for the pedigree system. While there were opinions against recording the general atmosphere was that there were very definite advantages.

The Sales Committee involved discussion on lot orders, judging etc., in fact most of the aspects of running a Sale. The Committee did its best to meet the requirements of vendors and purchasers but it was almost impossible to produce a format that will totally suit every vendor. The Committee is however always open to new ideas.

The venue of the Annual Meeting and its link with our Sales was once again discussed. A survey had been made of members and replies received and opinions expressed at the meeting favoured continuance of the present arrangement with about five who wanted to see the A.G.M. revert to a separate moveable event as it was in the early days (which admittedly was a lot of fun). The main reason for continuing the combined A.G.M./Sales is one of economy. Travel and accommodation is now so expensive many people would not attend two separate events. The matter will be discussed again at next year's A.G.M.



OBITUARY

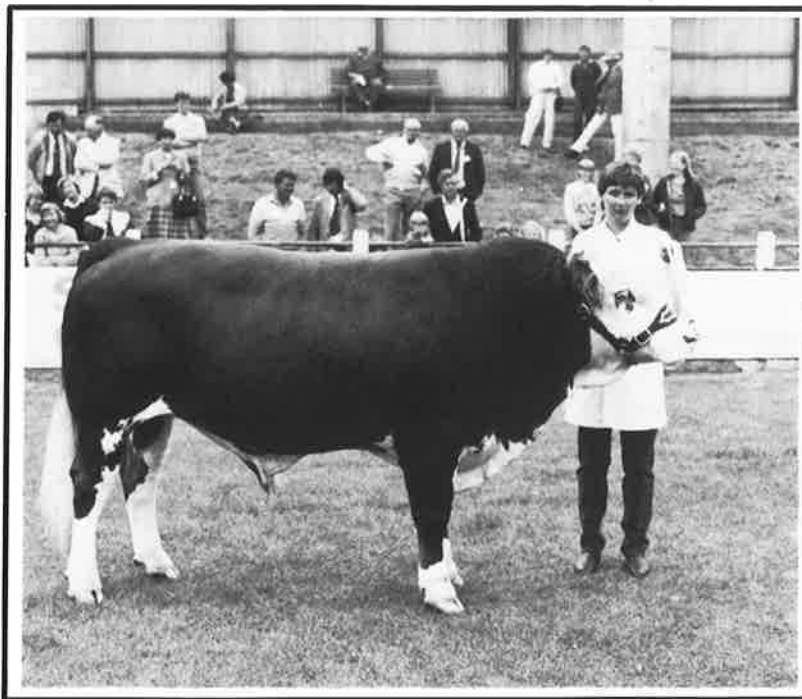
We are sorry to record the passing of one who had no small hand in many of the basic policies and procedures on which this Society is based. Harold McCulloch Studholme died at his home in Christchurch on the 26th of October.

'Mac', as he was known to most of us joined the Simmental Society as the first Secretary in 1971, shortly after its formation. He brought with him a lifetime of experience with people and journalism and a very broad knowledge of all things to do with a rural environment, having served as Agricultural Editor of the Christchurch Press, Secretary of the Canterbury A. & P. Association, Secretary of the N.Z. Sheepbreeders Association and a Council member of the Royal Agricultural Society of which he was an Honorary Life Member.

With his wife he set a fledgling Society on its feet with sound policies and wise advice and many of the procedures he implemented are still the basics from which we work. A person of strong rapport with farmers he was widely known and respected. In early 1974, by which time the Society had grown apace, he decided he had had enough and retired (for the second time). A rather timorous replacement Secretary asked him "what was it really like to be Secretary of such an organisation?" Mac's reply was typical of his dry humour "Like hanging on to the tail of a Jersey bull — hang on and he'll kick you to death — let go and he'll gore you!"

Mac Studholme was a pillar of common sense wisdom and with his passing we are so much the poorer. To his wife and his family we offer our sincere condolences.

'AVON PARK' SIMMENTALS

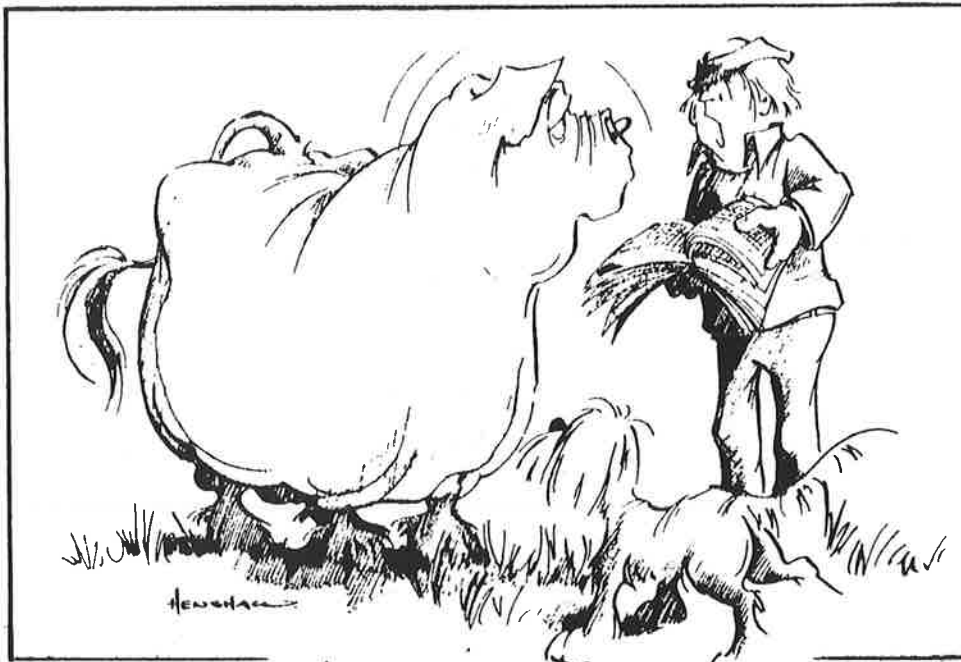


**'AVON PARK MAJESTIC', SUPREME CHAMPION SIMMENTAL
CANTERBURY 1983**

AVON PARK SIMMENTALS ARE NOW PERMANENTLY DOMICILED
AT 'MANOR FARM' AT THE TOP END OF LYTTTELTON HARBOUR
ON THE EASTERN SIDE. JUST PAST THE TEDDINGTON HOTEL.

Avon Park have a selection of cattle for sale
from a variety of outcross bloodlines, bulls of
working age and heifers.

ENQUIRIES AND INSPECTION ALWAYS WELCOME
DAVID AND MELINDA CARTER
'AVON PARK' STUD, MANOR FARM, 1 R.D. LYTTTELTON
PHONE 299-731 CHRISTCHURCH.



It says 'ere'.... "ADD A WEIGHT OR A FATE AND YER PERFORMANCE RECORDING MATE" thats easy for a "switched on" Simmental breeder like me, "AND ITS SO CHEAP!"

WHY PERFORMANCE RECORD IN BEEFPLAN?

With seven beef Breed Societies now under contract with Beefplan, the national Beef Recording Service, to process the pedigree records for their members, we are getting an increasing number of these breeders who are keen to also performance record their animals.

The response to the new Beefplan performance recording service has been overwhelming — advisers and breeders are very enthusiastic about the new breeding values and breeding indexes, the allowance made for previous culling in the herd, sale catalogue option — to mention but a few of the services available to the Beefplan performance recorders. Membership is certainly climbing!

There are still some Society members who are asking about the benefits of performance recording. Having been associated with Beefplan now for the whole of its 10 years a clear pattern has emerged, and it's this pattern which I would now like to discuss as this question is brought into the open.

Firstly Beefplan's performance recording programme has been developed locally by breeders (with the help from the 'techno-grats') for breeders. It's certainly not a means of providing an "ego trip" for officers of MAF or the Meat Board. The fact is that these two bodies have helped for years finance, administer, technically expand and promote our national recording service.

This has resulted in a service which has international as well as national "credibility".

So the first answer to our question is —

"Because we want to be part of a progressive and far reaching programme aimed at improving the productivity levels and financial reward from our beef breeding efforts."

But how does membership of Beefplan performance option achieve this, you ask. Well let's list these:

- We objectively measure economically important traits within a herd.

You see we *don't* believe you can pick by eye the value of an animal.

- We rank animals within your herd for these traits.

This makes selection and culling far more accurate — the good ones are retained for breeding, the poor ones are culled.

- From these rankings the genetically superior animals can be used effectively to improved within-herd production levels. This is really important for sires and Beefplan's sire summaries tell you which bulls are leaving the best progeny.

- This leads to efficiency of production — per head and per hectare!

As economic pressure is squeezing N.Z. farmers in all directions, our "seed stock" industry must ensure that it is producing animals which will help meet the current and future economic demands of their bull buying clients.

Technical

- Helps identify management skills or weaknesses which can affect production levels in a herd.

- Increases a breeder's level of interest in the performances of individuals within his herd and of his herd as a whole.

When herd testing was introduced into our N.Z. dairy herds it was established that *production levels* rose 15% due simply to the fact that farmers were recording the individual performances of their animals and increasing their interest in their overall production levels year by year.

- Although Beefplan ranks animals on production **WITHIN** a herd the system will rank bulls across herds through Sire Reference Schemes.

Currently 680 bulls of differing breeds are being evaluated and overall national summaries regularly publicise the "best bet" bulls of the various breeds. Locally bred bulls can be compared to top ranked bulls in the country or from overseas.

- Beefplan has trained MAF advisory staff who can help breeders plan an effective beef breeding programme which will maximise genetic improvement. This service is **FREE** to ALL Beefplan members.

The best records mean nothing unless they are used effectively on a farm. This on-farm service is available from any MAF office.

So far we have talked about increasing productivity within our herds by identifying superior animals through Beefplan and using these animals *effectively* in a breeding programme. How does Beefplan relate productivity with likely financial returns?

Animals are now ranked on Breeding Value — "the value of that animal as a parent" — and Breeding In-

dexes. These are expressed in kilograms. It is not difficult then to take the schedule value and calculate the financial contribution that animal will make within a herd.

And that's *all* the benefits to be gained from Beefplan's performance system.

There are now built-in allowances for previous culling which has occurred in a herd. In other words, we can tell how effective a bull breeder has been in selecting the right animals.

We're now talking about a breeding programme and not just a recording system. Yes, Beefplan takes beef recording in N.Z. into a new era by offering services to beef breeders and Breed Societies previously unheard of in New Zealand . . . AND IT'S CHEAP TOO!!

Beefplan can also help you in the preparation of your sale catalogue . . .

AS A GENERATOR OF SEED STOCK IN NEW ZEALAND YOU SHOULD BE USING BEEFPLAN'S PERFORMANCE RECORDING SERVICES.

P. M. Packard
Farm Advisory Officer (BEEFPLAN)
Ministry of Agriculture and Fisheries
Auckland

ANNUAL DINNER

Held at the Avon Motor Lodge following the Sale in Christchurch this event proved as popular and as successful as previous years with over a hundred people. Food (an Avon Motor Lodge specialities was sumptuous and people were entertained by the well known Country and Western singer John Hoare.

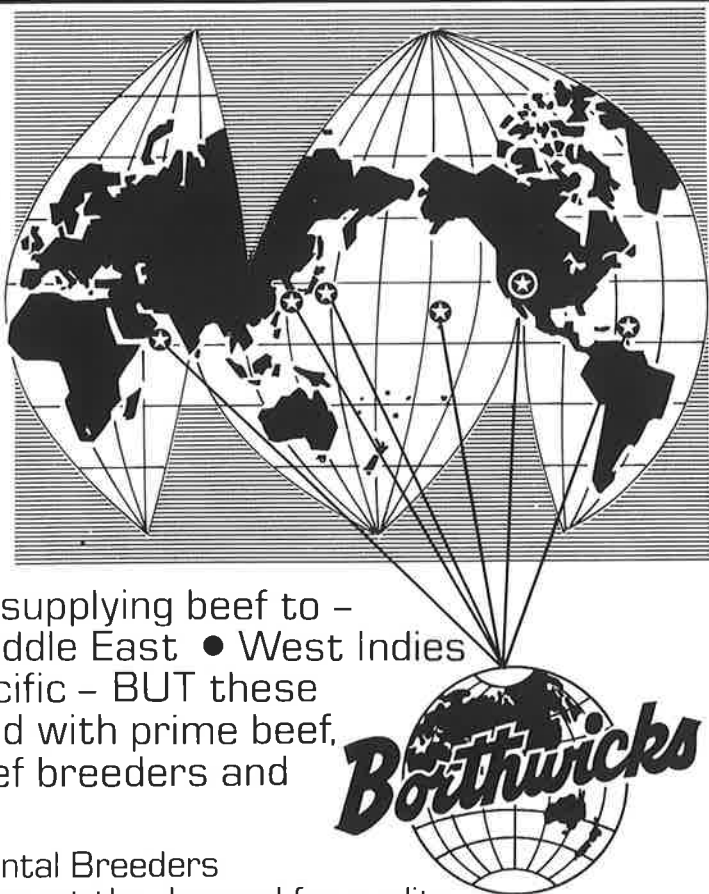
There is a World-Wide demand for PRIME BEEF

BORTHWICKS are currently supplying beef to –

- The United States ● The Middle East ● West Indies
- Japan ● Korea ● South Pacific – BUT these markets are still undersupplied with prime beef, so Borthwicks commends beef breeders and their aim for excellence.

Proud to be associated with Simmental Breeders

One of the breeds most suitable to meet the demand for quality.



Simbeef

SIMBEEF SUCCESS

RECORD PRICE FOR YEARLING STEERS

Yearling Simmental cross steers made a record price at Addington, Christchurch on 30th August and possibly broke the N.Z. record for cattle of that age. Sold on behalf of J. D. Graham (Councillor) of Parnassus, North Canterbury it was the first time this annual draft had been put to auction. In previous years they have had a regular market with private buyers. The line of 56 steers, the oldest, which was born on 12th August 1982, were off hill country in the Conway River area and came forward in excellent order for the time of year. The top pen of nine sold for \$482 to a butcher, with the remainder being taken up by one purchaser, who is a fatterer. The average price was \$429 per head, \$39 above the next best price, which was for rising two year olds. One of the largest lines of Simmental steers seen in Addington they created considerable interest.



At the same sale in the fat section five large Simmental cross heifers made \$702, second price in competition to a couple of very big Friesian steers. The Simmentals were offered on account of Mrs A. J. Carmichael.

BIG BULLOCKS KEEP COMING THROUGH

In August 1981 'Herb' the five year old Simmental/Friesian steer caused a stir when he brought \$1085 at Addington. He was subsequently 'saved' by the public (he was a pet) and now is of enormous proportions and resides happily near Christchurch. Since then a number of big fellows have continued to appear at sales and we have reports as follows:

In Dunedin at the Otago Winter Show, Lloyd McLay of Owaka entered a magnificent steer, which gained second in the judging and sold at auction for \$1300. His live weight was 1250 kgs, (2756 lbs) and on the hook he dressed out at 715 kgs (1576 lbs).

Further north at Oamaru a rising 3 year old won most of the prizes at the A. & P. fat Stock Show. Entered by Miss Doreen Grant from Otiaka he won his class, was judged best of breed 2 years and over, Champion beast in the show and most suitable for export. At auction he

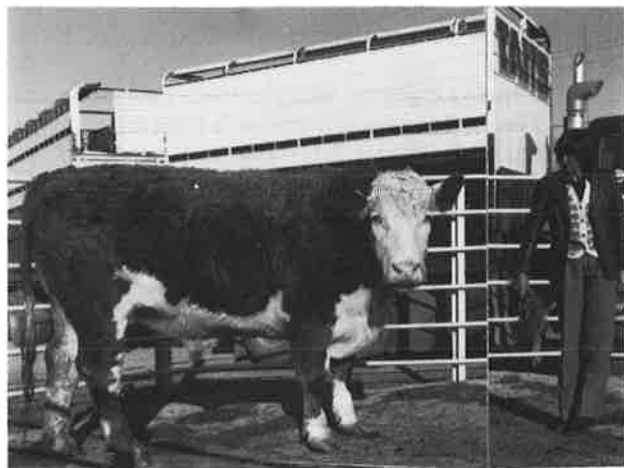
***APOLOGY** The photograph of Mr McLays steer has unfortunately been mislaid by Kodak who were re-printing from a slide. We will print it in the next issue.*
(Editor)

simbeef

symbol of progress

brought \$1130 — a record for the Waiareka Saleyards at Oamaru. His dressed weight was estimated at over 530 kgs (1168 lbs).

Hawera, in Taranaki also produced a couple of record breakers. One bullock, a four year old Simmental cross brought \$1430 and another \$1210 on the same day. Unfortunately, we have no details of the vendor.



WEANER CALVES

In our last issue we somehow omitted one 'market topper' report. Our apology to Bevan Hurst of Waimate.

South Canterbury

Waimate (April)

* Market Toppers. Simbeef Steers \$284.

Vendor — 'Thanet Farm (B. Hurst), Waimate.

The success of our crossbreed cattle is indisputable and this has been born out this year graphically with a demand for Simmental bulls from the commercial sector as never before. A very large percentage of Simmental bulls sold at auction this year were purchased by commercial breeders for crossbreeding. Many of our breeders had a complete 'stock out' of bulls by the end of July.

We place on record our thanks to those people who send us information on sales and success, they are facts that are the best promotion any breed could have.

Tattooing — Year Letter Sequence

The years seem to rush by and it seems only a short time ago that our year letter was 'E' (1974). We have had a look at the sequence for the next year or two and have made a few necessary alterations, which we ask you to note:

Year Letters:	1981 = M
(For calves born between	1982 = N
the 1st January and	1983 = P
31st December).	1984 = R
	1985 = T

You will see we have dropped several letters, simply because in a tattoo they can look like a numeral. These are 'O' = 0, 'Q' = 0, 'S' = 5 for the same reason we dropped 'i' earlier in the sequence.

Note: Please ensure you tattoo your calves with care.

STOP PRESS!!

ADDINGTON DOES IT AGAIN . . . On Tuesday, 11th October a Simmental cross steer (6 years old) sold at Addington, Christchurch for a record \$1504! Despite his age he was an excellent animal and it was expected he would grade P1. He was in top order, but showed no waste or over finish, which is often the case with animals of his age. Bred by D. C. Edgar of mid Canterbury, who incidentally started with Simmentals in 1973 (Herd 195) the bullock was from a half bred Angus/Friesian cow. This sale was an Addington record (by \$254) and probably a N.Z. record.

Palmerston (in the South)

Since reporting Mr J. D. Graham's top sale of yearlings, things have progressed strongly and we just have a report to hand of 10 yearling Simmental/Hereford cross steers reaching an astonishing \$616! The vendor was Neil Dempster of Waikouaiti.



The two seven-eighth bulls on the left sold to Commercial breeders for \$1,450 and \$1,400 at the Cromwell Saleyards weekly sale recently. It was the first time the breed have been offered at Cromwell. Vendor was a delighted Ken Hinton of Alexandra.

SIMMENTAL ITEMS FOR SALE

We have various items for sale at the office:

- Ties** Brown and Green ties, single central Simmental symbol. Wool/terylene suitable casual wear. \$5 each.
Blue terylene dress tie, diagonal red stripes with small Simmental symbols, casual or formal wear. \$10 each.
(Blue ties are new stock and have increased considerably in price since our first shipment six or seven years ago.)
- Birds** We have brought and re-sold one order and have more coming. These are available in lots of ten at \$1.60 each.
- Gate Signs** We will produce to order. These are for use in your own stud sign to give uniformity of image. Dark green and white enamel on metal disc. \$17.50.
- Barbeque Napkins** Top quality, red with 'Simmental' overprint. Very popular and useful. \$10 per packet of 100 (plus postage).

JUNIOR MEMBERSHIP

At the present time we have a bit of a 'void' in the co-ordination of our Juniors, many of which have now 'graduated'. Our good friend Sandra McLean has completed her University studies and has taken up a demanding and full time job with Hellaby Meats Ltd., so understandably has just not got the time to continue her Junior promotions. We record our sincere gratitude to her for what she has done in the past and wish her well in her new job.

In discussion of what we can do in regard to keeping our Junior Membership going we appear to have two alternatives. We can, if there is someone willing to take it on, have another co-ordinator or we can distribute the responsibility to the Clubs. The latter is perhaps the most logical move as Juniors are generally the sons and daughters of members and activities vary greatly from area to area. Some areas have few Juniors who participate simply because they spend the larger portion of their year at boarding school and lack the opportunity of participating. Others have closer links at home and put in time with calves and their family stock.

We would appreciate comments from both parents and children on what we should do.

In the meantime we look forward to any contributions, photos or doings of our younger people. They add interest to our publication. So keep those cards and letters coming.

CANTERBURY CLUB HOLD FIELDAY

Members of the Canterbury Club held a most successful fielday in August. Based on the area South East of Christchurch a visit was made to five different properties some of which had not been visited before.

Some forty people participated and the day proved both interesting and informative. Calls were made to the properties of Tony Partidge (Ladbroke), Oakleigh Osborne (Leeston), Colin Patterson (Lakeside), George Habberjam (Southbridge) and Brian Chamberlain a Hereford Stud breeder of Springston.

The day was perfect and people took a lot of interest in the cattle presented for perusal. Each breeder gave an address on his objectives and his findings with the breed. The visit to Brian and Ann Chamberlain's Hereford Stud was an excellent idea and breeders had a chance to see and hear something about a long established stud and see some of their very good cattle. It is pleasing to be made so welcome by people who are much involved in another breed — Brian is Canterbury President of the Hereford Society.

The Club has few fieldays and this is probably the reason they are so well supported then held. The organisation was excellent and it was only darkness that eventually got people heading for home.



Club group who gathered for lunch at Winfield.



Brian Chamberlain, Hereford breeder addresses his Simmental visitors, wife Ann listens attentively.



Club president Neil Oliver, Neroli and Oakleigh Osborne and John Guthrey.

HAVE YOU EVER ADVERTISED
IN YOUR MAGAZINE ???
HOW ABOUT THE NEXT ISSUE?

RISSINGTON SIMMENTALS



'RISSINGTON MONITOR'

Sire: POLLED SBL 63K

Dam: RISSINGTON BH418

2 year Bull — Supreme Champion
Simmental Bull, Winner of
Meat & Wool Cup, Gisborne 1983



'RISSINGTON MAJOR'

Sire: RISSINGTON EXTRA

Dam: RISSINGTON BJ522

2 year Bull — Grand Champion Simmental Bull and 4th in the Meat & Wool Cup, 1983 Royal Show at Hastings. Reserve Champion Simmental Bull at Gisborne, 1983.

Sold to R.N.S. Cox, Levels Stud, Timaru for \$20,000

With LJB Jade retired from the Show scene it was gratifying to obtain the above results. That both bulls were homebred sires and top performers on their Beefplan records was likewise most satisfying. We wish Rodney Cox the best of luck with 'Rissington Major'.

Our 1984 Sale Team are looking extremely promising at this stage with many exciting stud sire prospects.

ENQUIRIES AND INSPECTION WELCOME
JOHN AND STAR ABSOLOM
R.D.4 NAPIER, PHONE: RISSINGTON 836

\$IMMENTALS \$UCCESSFUL \$EASON



- ★ OVER 140 BULLS OFFERED AND SOLD AT AUCTION IN 30 DAYS
- ★ TWO NATIONAL SALES AVERAGED \$2512 FOR 64 BULLS
- ★ 70% OF BULLS SOLD WERE PURCHASED BY COMMERCIAL BREEDERS FOR USE IN CROSS-BREEDING PROGRAMMES
- ★ SIMMENTAL CROSS WEANERS TOPPED TEN MAJOR WEANER SALES
- ★ SIMMENTAL CROSS STEERS TOOK THREE SUPREME CHAMPION CARCASE AWARDS IN MAJOR BEEF COMPETITIONS

BREED \$UCCESS – USE A \$IMMENTAL

SIMMENTAL CATTLE BREEDERS'
SOCIETY OF NEW ZEALAND (Inc)



P.O. BOX 25100
VICTORIA STREET, CHRISTCHURCH 1.