

# **new zealand simmental**

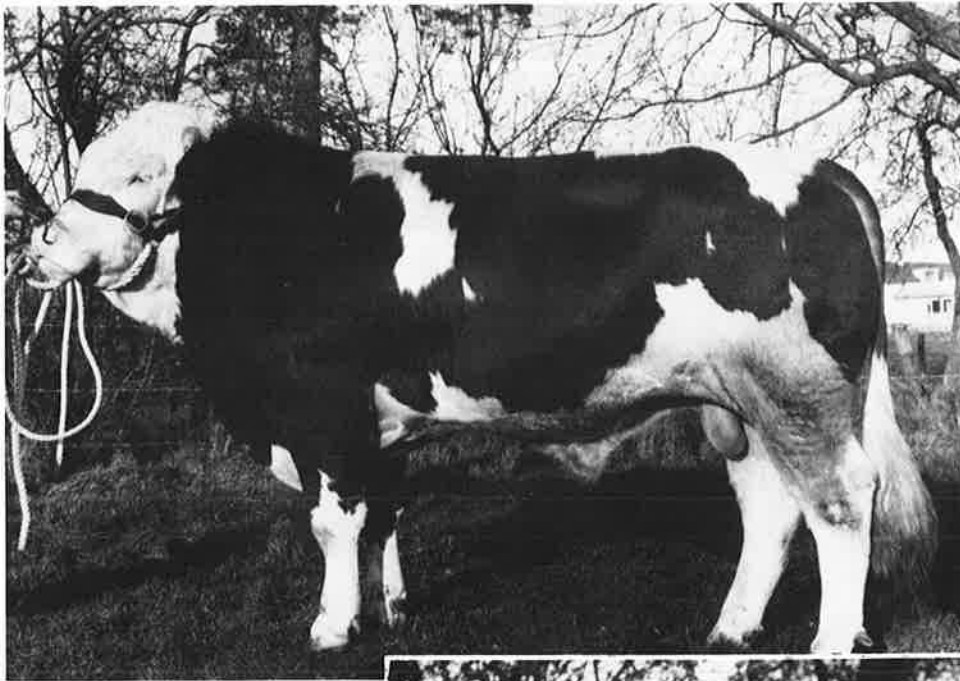


**MEAT & WOOL CUP WINNER 'LJB JADE'**

**summer issue: january 1982: number sixteen**

**Registered at Post Office H.Q. as a Magazine**

# Scottish Semen Services



## Scottish Helli

H.B. No. 896160743

842 kgs.

150 cms. at 2yrs. 1mth.

## Scottish Marder

H.B. No. 888393343

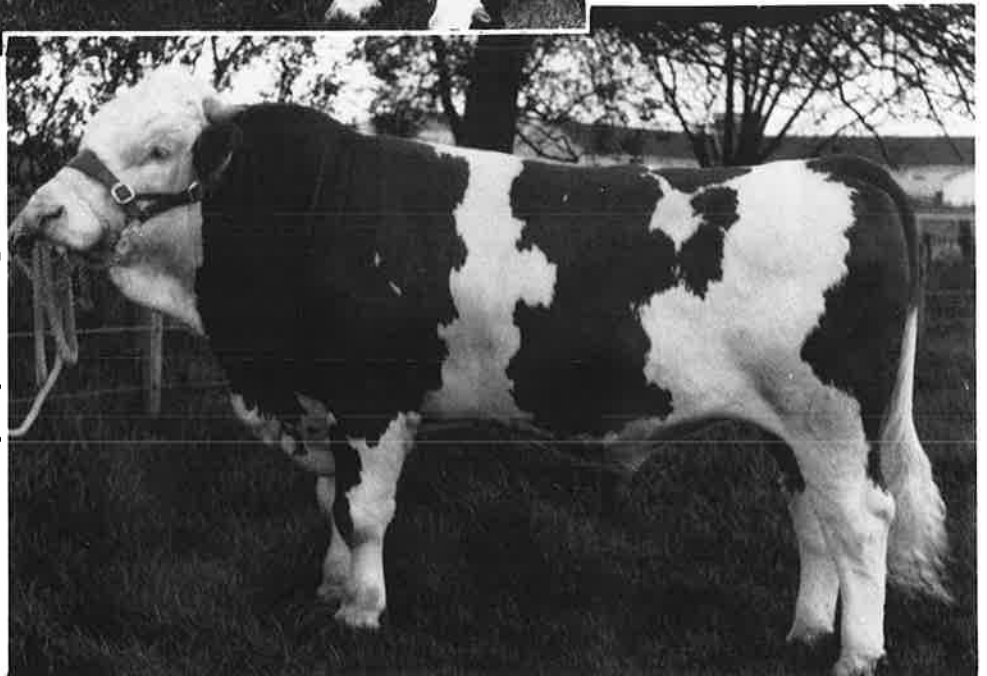
868 kgs.

151 cms. at 2yrs. 1mth.



Southbar Cattle Breeding Centre.,  
Inchinnan, Renfrew, Scotland,  
Telephone: 041-812 1287

a Division of Scottish Milk Marketing Board.



Scottish Semen Services are indebted to the help afforded by Australian Simmental breeders, who assisted them in the search throughout Europe for Simmental bulls of outstanding fleshing ability, which are required for the high standard of cattle bred in Scotland and Australia. They found in Austria, the style and type of cattle for which they were searching, and in Scottish Helli and Scottish Marder, two of the top superior confirmation bulls in that country.

*ENQUIRIES FOR SEMEN FROM ANY SCOTTISH MILK MARKETING BOARD SIRE MAY BE DIRECTED TO THEIR MAIN DISTRIBUTOR IN NEW ZEALAND*



## Guthrey Breeding Services

MAIN ROAD, P.O. BOX 97, KAIAPOI, NZ

PHONE: KAIAPOI (0327) 6175

TELEX NZ 4243

P.O. BOX 1339, HAMILTON

A DIVISION OF GUTHREY HOLDINGS LTD

**N.Z. SIRE SERVICES**  
P.O. BOX 8036 HAMILTON  
437-995 HAMILTON

**N.Z. DAIRY BOARD**  
Newstead A.B. Centre  
No 4 R.D. HAMILTON  
65-044 HAMILTON

**DALGETY SEMEN SALES**  
P.O. BOX 643  
PALMERSTON NORTH  
68-039 P. NORTH

**NORTH OTAGO  
VETERINARY SERVICES**  
P.O. BOX 157 OAMARU  
37-879 OAMARU

# THE SIMMENTAL CATTLE BREEDERS'

## SOCIETY OF NEW ZEALAND (INC.)



118 VICTORIA STREET, CHRISTCHURCH 1, NEW ZEALAND.

P.O. BOX 25·100, VICTORIA STREET, CHRISTCHURCH. Phone 793·166

## Contents

Editorial . . . . .	1
Profile . . . . .	2
Shows . . . . .	3, 4, 5, 14
Miscellaneous . . . . .	6, 11
1981 Royal Show . . . . .	6, 7, 8, 9
Technical . . . . .	10, 11
Canterbury Show . . . . .	12, 13
Simbeef . . . . .	15
Junior Membership . . . . .	16

## Advertisers

Guthrey Breeding Services  
Ashliegh Lodge  
Levels Simmental Stud  
Sherwood Simmentals  
Auflex

## Office Staff

Ian S. Johnstone  
(Society Secretary)  
Phone: Christchurch  
(Bus.) 793-166  
(Pvt.) 487-572



Mrs Ann Booth



Mrs Yvonne Kingsland

## EDITORIAL

The Meat and Wool Cup, premier Trophy for beef cattle, is competed for at most major provincial Agricultural Shows throughout the country. To many it is the ultimate showing award, to others it is a parade of over pampered cattle. Regardless of individual attitudes, the opportunity is the same for each competitor in how he presents his animal. The scoring of individual judges could in some cases be criticised as being parochial but the final result is usually pretty close to the mark — the best animal wins.

For a Simmental to win this Trophy is an achievement of note. Not only must it be a good animal but it must have those attributes which allow the more traditional judges to look beyond the fact that it is of a newer breed in the country and score it accordingly.

1980 saw our first success in this competition when a Simmental cow and calf unit won at the Royal Show. 1981 proved acceptance of the Simmental breed in this manner as never before. 'L.J.B. JADE' not only won the Meat and Wool Cup at the Royal, but at Gisborne and Hawkes Bay, and would have obviously won elsewhere had he been exhibited. More recently a two year heifer won the award at the Southland Show in Invercargill. Several other entries at provincial Shows have taken second place in this competition.

We congratulate not only these most successful competitors but all breeders who have put time and effort with high costs into presenting the Simmental breed before the public in many areas. Let us not forget though, the many other breeders who do not enter the showing but get on with the job of producing bulls for commercial breeders, and weaners and steers that top markets, to create acceptance and demand for our cattle. Without the efforts of these people and their success, the stud enterprise would be of little consequence. They too have contributed greatly to a most successful 1981.

## Council Members

President:	R. N. S. Cox, The Levels, R.D. 4 Timaru. Phone: Timaru 82 418
Vice-President:	J. R. Sutton, Waihaorunga, R.D. 7 Waimate. Phone: Waihaorunga 878
Councillors:	N. J. Barnett, Arohena, No. 7 R.D., Te Awamutu. Phone: Pukeatua 573 J. D. Graham, Waingaro, R.D. Parnassus. Phone: Parnassus 809 W. Gutt, R.D. 29 Kaponga, Taranaki. Phone: Kaponga 741 J. R. Houlbrooke, Omana, Tangiteroria, Northland. Phone: Oakleigh 663 or Kirikopuni 624 H. R. Lowry, Pukekohu, P.B. Havelock North. Phone: Waimarama 832 R. G. Macdonald, Governors Bay R.D. 1, Lyttelton. Phone: Christchurch 299 739

## CHAIRMAN OF COMMITTEES

FINANCE: R. N. S. Cox TECHNICAL: J. R. Sutton  
PROMOTION: H. R. Lowry SALES J. D. Graham

# Profile

Located on the main Queenstown/Invercargill highway sixty miles south of Queenstown, 'East Dome', the property of W. A. Rouse, lies east of the main road overlooking the Mossburn basin. The property has been owned by the Rouse family since 1928 and was taken over by Woody when his parents retired to Queenstown in 1970.



The East Dome Homestead set in mature English trees.

A most attractive property, 'East Dome' is one thousand six hundred acres made up of a well balanced area of flats and easy terrace country rising to low hill country. The homestead is at one thousand feet with the highest point at two thousand five hundred feet. The property lies to the west and is consequently sunny and has sufficient slope to be free draining with an annual rainfall of twenty-eight inches.



Purebred females with spring calves.

Three thousand Romney sheep are run and a commercial herd of seventy-five Hereford and Simmental cross cattle as well as an established purebred Simmental Stud. Founded in 1974, the Stud has twenty-five breeding cows and from this herd numerous animals have been exported to Australian herds including that of the Australian Prime Minister, Mr. Malcolm Fraser. Most matings are by A.I. and 1981 calves are already showing promise with several interesting outcrosses.

Woody Rouse has strongly supported the breed and the Society in both Sales and Shows. In 1981 he brought a team of six animals through to the Christchurch Show and won Reserve Senior Champion Cow,



Woody Rouse checks on some of his cattle. The Mossburn Basin looking toward Te Anau is in the background.

Junior Champion Heifer and Reserve, as well as some minor placings. He has also shown successfully at both Gore and Invercargill. Over the past year, he has been assisted in preparation of his sale and show cattle by Miss Eppi Miller from Australia who has brought with her a degree of professionalism not widely seen in this country. Eppi, prior to coming to New Zealand, worked under well known Australian Studmaster Peter McWilliam, whose article on show and sale preparation of cattle was re-printed in one of our more recent magazines.

As well as being an active farmer and studmaster, Woody has been closely associated with the Southland Simmental Club since its foundation. A person of wide interests, his leisure hours are mostly taken up with flying. He is a qualified pilot and has his own aircraft and is an active member of the Southland Gliding club who use his property as their main flying base.



Yearling heifers from the herd.



## Gore and Invercargill Summer Show — December 1981

The breed was well promoted at both Gore and Invercargill with animals of quality being shown. Those Members who entered at Gore enjoyed the day immensely. This year was the first year Gore A. & P. Association has had a class for Simmentals.



At the Gore Show: L-R. Eppi Millar holds third placed East Dome heifer, Alister Duncan of Mossburn with his Reserve Champion heifer 'Southern Katy' and Ray Lott with his Champion 'Southern Kimba'.

Mr. John Patterson of Alexandra, Judge for the Show, did a very fine job of his task. Top honours went to Ray Lott, Garston with a two year heifer SOUTHERN KIMBA winning Senior Female All Breeds Champion Cow and second place in the Alliance Trophy.

Individual placings were as follows:

- SUPREME CHAMPION BULL — W. A. Rouse, East Dome Stud
- CHAMPION YEARLING BULL — W. A. Rouse, East Dome Stud
- RESERVE CHAMPION BULL — A. W. Duncan, Centre-Burn Stud
- CHAMPION SENIOR COW — R. Lott, Sunnyvale Stud
- RESERVE CHAMPION SENIOR COW — A. W. Duncan, Centre-Burn Stud
- CHAMPION YEARLING HEIFER — W. A. Rouse, East Dome Stud
- RESERVE CHAMPION YEARLING HEIFER — W. A. Rouse, East Dome Stud
- HEIFER (2 years)
  - 1st R. Lott
  - 2nd A. W. Duncan
  - 3rd W. A. Rouse
- HEIFER (One year)
  - 1st W. A. Rouse
- HEIFER (Born since 1 Sept. 1980)
  - 1st W. A. Rouse
  - 2nd R. Lott
  - 3rd A. W. Duncan
- PAIR OF HEIFERS (one year)
  - 1st W. A. Rouse
  - 2nd A. W. Duncan

BULL (Born between 1 June & 31 August)

1st W. A. Rouse

BULL (Born since September 1980)

1st and 2nd A. W. Duncan

JUNIOR BREEDERS GROUP (One bull, 2 females)

1st W. A. Rouse

2nd A. W. Duncan

W. A. Rouse won the Trophy for the most points of the day.

**INVERCARGILL** judging day was held in atrocious conditions. This was most disappointing, however, Simmentals came out on top with Ray Lott's two year old heifer winning the Senior section of the Meat and Wool Cup. Mr Peter McWilliam of N.S.W., Australia, was Judge for the Show and made a very fine job of his task.



Ready for the Grand Parade at Invercargill. Ray Lott with cup, Bill Lott with Kimba, Maylene Duncan with the signboard. Simmentals led the beef section of the Grand Parade.

We had a total of thirteen animals being shown and individual placings were as follows:

No Senior Bull

JUNIOR CHAMPION BULL — W. A. Rouse, East Dome Stud

SUPREME CHAMPION BULL — W. A. Rouse, East Dome Stud

(The Wairaki Challenge Trophy was presented to Mr. Rouse by Mr. Hugh Irving).

RESERVE CHAMPION BULL — A. W. Duncan, Centre-Burn Stud

FEMALE CHAMPION — R. W. Lott, Sunnyvale Stud

SUPREME CHAMPION FEMALE — R. W. Lott, Sunnyvale Stud

(Mr. Rouse presented Mr. Lott with the East Dome Challenge Trophy).

RESERVE CHAMPION FEMALE — W. A. Rouse, East Dome Stud

BULL (Born since 1 July 1980)

1st W. A. Rouse

2nd A. W. Duncan

3rd A. W. Duncan

HEIFER (Born since 1 July 1979)

1st R. W. Lott

2nd A. W. Duncan

3rd W. A. Rouse

HEIFER (Born since 1 July 1980)

1st W. A. Rouse

2nd W. A. Rouse

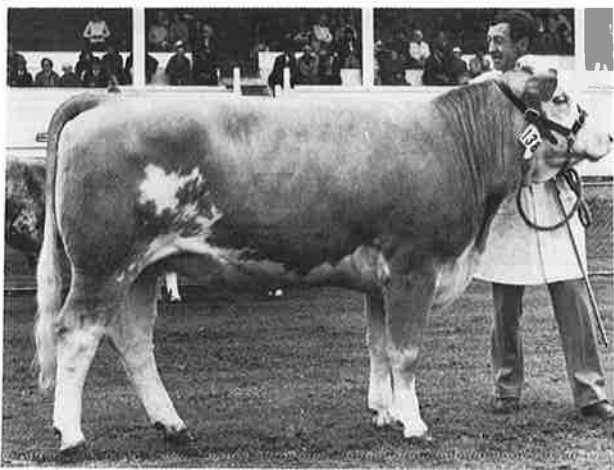
3rd R. W. Lott

# Shows

The Southern Districts Club had a Trophy for Junior Herdsman. This Trophy was competed for by three Junior Members in the Yearling Heifer class. It was won by Richard Duncan of Mossburn. The two other Members competing were Bill Lott, Garston and Brian Neas, Invercargill. These young Members made a fine job of presenting their animals.



Winner of the Junior Herdsman Club Trophy Richard Duncan with Judge Peter MacWilliam.



A proud Ray Lott of Garston with his Meat & Wool Cup winner 'Southern Kimba' at the Southland Show in December. 'Kimba' was All Breeds Female Champion at the Gore Show.

## Carcase competitions

There are still not the number of entrants there should be. There are a lot of steers about but somehow people just do not seem to get around to entering them. A few do, generally the same few each year. We have an opportunity to prove what we say about our cattle. The 'hook' is proof beyond doubt.

Make it a project for 1982 — enter your local carcass competition.

## Show and Display Equipment

We have various bits and pieces of display equipment which are used at Shows and Sales. These are held by the Office and in some cases by Clubs and are moved around on request.

We make a strong plea to those who obtain this equipment to **TAKE CARE OF IT**. Over the past twelve months, we have lost quite a few items and some have been broken — mainly through carelessness. When you use the equipment remember it will be required by someone else. The main problem seems to be re-packing and despatch after a Show or Sale. Our sign-boards frequently come back without the nuts and bolts that put it together or the instructions and the boxes are frequently not properly screwed down necessitating a complete check over each time they are returned and a replacement of bits missing. This takes time and money and there is only one guy who does it!

If Clubs have equipment, make sure someone is responsible for it and that it is stored in a secure locality — without control it has a habit of disappearing. If we continue to lose gear we just won't have any to send around. When you are packing up after a Show, make sure you pack it *properly* pack *everything* and in such a way it will arrive at its destination complete and undamaged.

## British Society has successful Bull Sales

The following is a re-print of a news release from the British Society in November.

'The autumn Perth bull sales saw British Simmental establish a record sale average when 140 bulls sold (only 1 bull went out of the ring unsold) for an average of £2042 (U.S.\$4048). This was an incredible increase of £895 (U.S.\$1790) on October 1980 when 131 bulls sold to average £1147 (U.S.\$2294).

Even more rewarding was the sale of the Simmental performance tested bulls when 34 bulls sold to an average £2436 (U.S.\$4872) against 106 non-performance tested bulls averaging £1916 (U.S.\$3832). This remarkable average was achieved with a top price of only £3990.

Mr. Philip House, the British Simmental Society President, said, "This sale marks an important stage for the Simmental breed in Great Britain and confirms that whichever country the Simmental has been introduced into, it has been successful. The underlying reasons for this are its fundamental soundness, its freedom from genetic defects, its high fertility and of course, its milk — so vital for growing strong calves. We feel proud that our slogan 'Good Farmers like Good Cattle' is now being fully appreciated".

### FOUND — After Christchurch Show

One almost new fawn hand-knitted man's cardigan. Owner may recover from the Society Office. (Suggest he gives his wife a bunch of flowers.)

## Simmentals do well at Waikato

The Simmental beef cattle breed received a great boost at the Waikato Summer Show, a spokesman for the Simmental Society reports.

Well represented among the beef breeds, the Simmentals were the only breed to be placed in every class of the all-breeds section.

Breeders gained a first in the Founders Cup, second in the coveted Meat and Wool Cup, second in the Hellaby Shortland class for the best yearling bull, second in the Producer Meats special class and first in the Farmers Meat Export Ltd. special class.

Another first this year resulted from the inclusion of a society sponsored class, based on performance figures and records involving all yearling animals.

Results of judging for the breed were as follows. (The all-breeds section results have already been published). Breed judge was Mr H. R. Lowry of Havelock North.

**COW** (Three years and over with calf at foot)

Sundowner Elise 2nd, N. C. Buchanan

**FEMALE** (with or without calf)

1st — Ashleigh Kate N. C. Buchanan

2nd — Blue Ridge Amber A. P. Rolley

**HEIFER** (One year)

1st — Ashleigh Lyn N. C. Buchanan

2nd — Lochamday AA Lady G. D. Locke

3rd — Blue Ridge Novalea A. P. Rolley

**BULL** (One year)

1st — Puketawa Legend Puketawa Land Co. Ltd.

2nd — Ashleigh Leo N. C. & K. J. Buchanan

3rd — Lochamday G. D. Locke

**PERFORMANCE CLASS** (For all yearlings male and female)

1st — Lochamday AA Lady G. D. Locke

2nd — Puketawa Legend Puketawa Land Co. Ltd.

3rd — Ashleigh Lyn N. C. Buchanan

**SENIOR CHAMPION FEMALE**

Sundowner Elise 2nd N. C. Buchanan

**RESERVE SENIOR CHAMPION FEMALE**

Ashleigh Kate N. C. & K. J. Buchanan

**JUNIOR CHAMPION FEMALE** Ashleigh Lyn

N. C. Buchanan

**RESERVE JUNIOR CHAMPION FEMALE**

Lochamday AA Lady G. D. Locke

**CHAMPION FEMALE OF BREED** Sundowner

Elise 2nd N. C. Buchanan

**RESERVE CHAMPION FEMALE** Ashleigh Lyn

N. C. Buchanan

**JUNIOR CHAMPION MALE** Puketawa Legend

Puketawa Land Co. Ltd.

**RESERVE JUNIOR CHAMPION MALE** Ashleigh

Leo N. C. & K. J. Buchanan

**CHAMPION MALE OF BREED** Puketawa Legend

Puketawa Land Co. Ltd.

**RESERVE CHAMPION MALE** Ashleigh Leo N. C.

& K. J. Buchanan

**SUPREME CHAMPION OF BREED** Sundowner

Elise 2nd N. C. Buchanan

### APOLOGY

Regrettably the photos taken at the Hamilton Show were not sharp enough for reprinting (Editor).

# ASHLIEGH LODGE



WE WISH TO THANK ALL THOSE MEMBERS OF THE WAIKATO & DISTRICT SIMMENTAL CLUB WHO GAVE ASSISTANCE WITH HANDLING AT THE WAIKATO AGRICULTURAL & PASTORAL SHOW IN HAMILTON AND HELPED TO MAKE THE SHOW SUCH AN ENJOYABLE AND SUCCESSFUL ONE. SPECIAL THANKS TO OUR CHIEF STEWARD, J. ARBON AND JUDGE, H. R. LOWRY.

THANK YOU ALL

NOEL & KEN

**N.C. and K. J. BUCHANAN, ASHLIEGH LODGE**  
KIWITAHİ, MORRINSVILLE. PHONE 712 or 777 KIWITAHİ

# Miscellaneous

## 1982 Annual Meeting/ National Sale

This event will be held in Palmerston North during the week 21st-25th JUNE.

The schedule planned is as follows:

MONDAY 21st June – Arrival of Members and Sale cattle.  
Annual General Meeting in evening.

TUESDAY 22nd June – National Sale 12.45 p.m.  
Annual Dinner in evening.

WEDNESDAY 23rd June – Workshop/Lecture programme.

## 1982 South Island Sale

To be held at the Canterbury Showgrounds Selling Centre, Christchurch, on THURSDAY, 17th JUNE.

## Election of Councillors

In 1982 three Councillors retire by rotation having served a three year term. They are Messrs. N. J. Barnett, W. Gut and J. D. Graham. Retiring Councillors may stand for re-election. Nomination to fill these three vacancies will be called in early March.

## 1982 Royal Show

The Royal will this year be held in Christchurch and dates are the 10th, 11th and 12th NOVEMBER. We expect a large entry for this event and would suggest that participants make bookings for accommodation *as soon as possible*. To emphasise the point I make, the Motels we use for Council accommodation (and they are large) have only three units left when we enquired for a block booking in December.

## Show ribbons/sashes

With an ever increasing patronage of A. & P. Shows by Simmental exhibitors, I am getting odd requests for Supreme Championship sashes which are not normally supplied by the A. & P. Associations. These sashes should be obtained by the Clubs or exhibitors in the area if they require them. We just cannot organise these for all Shows. There are several firms from which ribbons or sashes are available and your local A. & P. Association will be able to give you their address. The only Supreme Championship sash we arrange is for the Royal Show – if they do not provide one.

## In for his chop

A New Zealander went into a butchers shop in London and asked for one mid-loin chop. The chop of his choice was placed on the scales – '95p,' said the butcher! The Kiwi gasped at the price and gave the butcher a quick run down on what he thought of the Common Market and one chop at \$NZ1.95. 'But this is an English chop,' said the butcher. 'I want to eat the bloody thing, not carry on a conversation with it,' retorted the Kiwi.

## As others see you

Someone made the suggestion that every judging ring at an A. & P. Show should have a full length mirror! People spend weeks getting the coats of their cattle clean and glossy for the big day. They scrub halters and polish buckles and carefully launder lead ropes – and then?? – arrive in the ring with their coat collar turned up, an open necked shirt, hair standing on end or stuffed under a Christmas holiday hat!!

Seriously, there is a lot to be learnt and I think we are learning fast. Overseas Shows present a degree of professionalism in both animals and people – ties are worn and neatness is the order of the day. If you are showing with any seriousness, a white coat of your own will not bust your cattle account and will help your tax problem! The chances are it will not look like a ball gown or a waistcoat. No offence meant.

## Waikato Club Purchase Promotional Caravan

The Waikato and Districts Simmental Club have recently purchased their own caravan for use at Shows and Club events. The activities of this Club have always been vigorous and on a regular basis and this mobile display unit will serve as a very useful base at Shows and such projects as the N.Z. Field Days. It will also be most useful as a storage unit for Club equipment. The financing of this caravan has been handled entirely by the Club Membership who are holding stock drives and fund raising projects within the area. This must be one of the most ambitious Club projects held and we wish them every success with it.

# 1981 ROYAL SHOW

## Simmentals again show strength at 1981 Royal Show at Palmerston North

With only four years of competitive showing Simmentals made their mark at the 1980 Royal Show in Hamilton when they took the premier N.Z. Beef Trophy, the Royal Show Meat & Wool cup, with an excellent cow and calf unit exhibited by H. R. Lowry of Havelock North.

This year at Palmerston North they again competed strongly with similar success. 'L.J.B. Jade', a three year old bull by Balig Agent owned by J. P. & S. Absolom of Rissington near Napier won the Meat & Wool Cup by a decisive margin. 'Jade' a smooth even coloured bull is beautifully muscled and of outstanding structure and would rank as one of the top Simmental bulls in Australasia. His win at the Royal followed similar Meat & Wool success during the previous two weeks at Gisborne and Hawkes Bay. The Absolom family have bred



# Royal Show

Simmentals since they were introduced to New Zealand over ten years ago and have established a large commercial herd on their property as well as a thriving stud enterprise.

It is of co-incidence that both the winner of the 1980 and 1981 Royal Show Meat & Wool Cup are the result of original importation from overseas by R. G. Macdonald, one of the founders of the New Zealand Society. 'Irish Empress' 1980 winner and 'Elagmore Elma' dam of 'Jade' were both brought to this country by Mr. Macdonald.

'Jade' was also awarded the Manawatu & West Coast Stock & Station Agents Association Silver Salver, a special award to mark the 75th year of the Association's operations. The 'Salver' is retained by the winner. In Simmental classes 'Jade' won Senior Champion Bull and Supreme Champion Simmental to take the Society's Silver Challenge Trophy.

In the only other 'inter-breed' competition 'Two Purebred Heifers', Simmentals, also fared well taking 2nd and 3rd places with entries for A. H. Thompson from Waipukurau and R. G. Nicholas from Normandy in Taranaki. Winner of this class were Murray Greys entered by J. M. Cooper of Carterton.

Last year at the Royal the Simmental Society introduced for the first time a performance orientated class based on recorded information on productivity and weight gain. Mr. & Mrs. N. J. Barnett of Halcombe presented a Silver Salver as the 'Coopental Challenge Trophy' for competition in this class at the Royal Show. At this year's Royal twelve animals competed. Entrants provided recorded information on dam productivity, weaning weights and current weight. Points were awarded with age taken into consideration and a final assessment was made by the Simmental Judge, Mr. R. A. Barton of Massey University in a ring appraisal of the top six entrants. The 'Coopental Trophy' was won this year by Mr. H. R. Lowry's entry 'Pukekohu Marquis' a nine month old bull calf whose dam 'Irish Empress' and her previous bull calf won the 1980 Meat & Wool Cup at Hamilton.

It must have been of interest and reward for Mr. Barton, the breed judge, to be involved in the judging of this class as he was one of the first Society Councilors who was responsible for the drawing up of the objectives of the Society, one of which is 'to promote and encourage through measurement and recording'. Performance classes for Simmentals will be expanded to area Shows as more recorded information becomes available through computerisation of the Society's records.

The overall standard of Simmental entries at Royal was extremely high. Individual class results were as follows:

*Cow with calf at foot* (Over three years)

1st 'Glen Turk Anna', by Neff. A. H. Thompson, Waipukurau.

2nd 'Lands Rita', by Friedholm Hahn. J. W. Plunkett, Paekakariki.

3rd 'Lands Anna', by Thierauch. Dept. Lands & Survey, Paekakariki.

*Heifer* (Two years)

1st 'Glen Anthony Kirsch', by Usch A. H. Thompson, Waipukurau.

2nd 'Peastons Kate', by Ravensworth Effigy A. H. Thompson, Waipukurau.

*Heifer* (Senior yearling)

1st 'Mossy Tulip', by Primann R. G. Nicholas, Taranaki.

2nd 'Rissington Lilly', by Seigfried J. P. Absolom, Napier.

3rd 'Mossy Primrose', Primann R. G. Nicholas, Taranaki.

*Heifer* (Junior yearling)

1st 'Rissington Lucy', by Rissington Extra J. P. Absolom, Napier.

2nd 'Pukekohu Lisa', by Bavarian H. R. Lowry, Havelock North.

*Two Yearling Heifers*

1st J. P. Absolom, Napier

2nd Dept. Lands & Survey, Paekakariki.

## FEMALES

SENIOR CHAMPION: 'Glen Turk Anna' A. H. Thompson, Waipukurau.

RESERVE CHAMPION: 'Lands Rita' Dept. Lands & Survey, Paekakariki.

JUNIOR CHAMPION: 'Mossy Tulip' R. G. Nicholas, Taranaki.

RESERVE CHAMPION: 'Rissington Lucy' J. P. Absolom, Napier.

*Bull* (Three years)

1st 'L.J.B. Jade', by Balig Agent J. P. Absolom, Napier.

2nd 'Glen Anthony Jupiter', by Sir Avon Park Extra A. H. Thompson, Waipukurau.

*Bull* (Senior yearling)

1st 'Pukekohu Larkin', by Blythe James H. R. Lowry, Havelock North.

2nd 'Pukekohu Lancer', by Landmark Mrs. J. Lowry, Havelock North.

3rd 'Glen Anthony Lustre', by Avoncroft Aster A. H. Thompson, Waipukurau.

*Bull* (Junior yearling)

1st 'Pukekohu Marquis', by Bavarian H. R. Lowry, Havelock North.

2nd 'Glen Anthony Loftus', by Julius A. H. Thompson, Waipukurau.

## BULLS

SENIOR CHAMPION 'L.J.B. Jade' J. P. Absolom, Napier.

RESERVE CHAMPION 'Glen Anthony Jupiter' A. H. Thompson, Waipukurau.

JUNIOR CHAMPION 'Pukekohu Larkin' H. R. Lowry, Havelock North.

RESERVE CHAMPION 'Pukekohu Lancer' Mrs. J. M. Lowry, Havelock North.

SUPREME CHAMPION SIMMENTAL

L.J.B. JADE J. P. Absolom.

*Group Classes*

*Bull and Three Females*

1st Glen Anthony Stud A. H. Thompson, Waipukurau.

2nd Lands Stud Dept. Lands & Survey, Paekakariki.

*Yearling Bull and Two Yearling Heifers*

1st Lands Stud Dept. Lands & Survey, Paekakariki.

*Sire Progeny Class*

1st Lands Stud Dept. Lands & Survey, Paekakariki.

# 1981 ROYAL SHOW



'Some winners wives.' Jill Lowry & Star Absolom watch proceedings in the Judging Ring.



An ecstatic John Absolom being congratulated by Royal Agricultural Society President John Barnett on his Meat & Wool Cup win with 'L.J.B. JADE' at the Royal.



Ray Nicholas of Normanby, Taranaki, with his Junior Champion heifer 'Mossy Tulip'. Ray exhibited for the first time in 1980 at the Royal and won the Junior Bull Championship. With him is judge Bob Barton.



Tony Thompson of Waipukurau with his Champion Cow 'Glenturk Anna'. Tony also took the Reserve Champion Senior Bull award and was placed second in the All Breeds pair of Heifers class.



'Team Lands & Survey'. L-R. Mark Heffernan (Field Supt. Wellington), Joe Plunket (Farm Manager & Studmaster), John Niven (District Field Officer), with Rodney Cox at the Royal.



Australian visitors Bill & Diana Almond look after 'L.J.B. JADE' prior to judging. The Almonds' have purchased a number of New Zealand cattle in the last year for their 'Kensileyre Stud' in N.S.W.

# PALMERSTON NORTH



John Absolom also won the Manawatu & West Coast Stock and Station Agents Association 75th Anniversary Salver. Here being presented to him by the Association President.



Supreme Champion 'L.J.B. JADE' with judge Bob Barton and John Absolom.



The Simmental centre at the Royal. A well patronised meeting place for members and friends.



Coopental Performance Trophy winner Robin Lowry receives the award from the Secretary. Robin also won the Junior Bull Championship with the same entry.



'Swiss Miss' Maya Wuerthrich, by profession a nurse, Maya has switched to farming since coming to New Zealand. Her family are involved with Simmentals in Switzerland so she is not unfamiliar with cattle.



Watching the Judging. L-R. Rodney Cox (Society President), John Robins (Southland, former owner of 'JADE'), Alan Perry (Palmerston North), Bernie Cooper (Eketahuna).

## Simmental performance classes (A. & P. shows)

When the Society approved competitive showing of Simmentals at A. & P. Shows it was agreed that performance orientated classes would be instituted. Over the past four years the matter has been discussed at some length on a number of occasions but no definite formula or criteria had been finalised. The presentation of a very handsome trophy by Mr & Mrs N. J. Barnett for a performance class at the 1980 Royal Show projected the Council into drawing up a formula that was both realistic and attractive enough to entice entries. In the first year there were a few difficulties in collating the performance data for the class, but since then classes have been organised at the Hawkes Bay, Waikato and at the Royal in Palmerston North. The final draft rules of entry were drawn up by Neil Barnett and Jim Houlbrooke and 'tried' at the Hawkes Bay Show. From this experience the rules were further looked at to produce a formula which is easier to operate and of interest to the exhibitor. Neil Barnett and Dr Chris Morris of Ruakura came up with rules which were used successfully at both Waikato and the Royal.

This is the first time that a positive step has been made to introduce performance into the show ring by any cattle breed Society and while we are not saying it is perfect it at least promotes the Simmental as the 'Performance Breed'.

The Promotion Committee therefore would like to encourage the class at all A. & P. Shows and certainly encourage exhibitors to support it. One very significant factor, judging by the response in Hawkes Bay, is the interest of sponsorship that is available. At that Show \$50 of prize money was donated and \$200 worth of Ralgro, more than all other classes put together. The 'Coopental Trophy' (donated by the Barnetts) was awarded at the Royal Show and will be a regular feature at future Royals.

I commend this performance class to all breeders as I firmly believe that this will be the concept for livestock showing in the future.

H. R. Lowry,  
CHAIRMAN PROMOTION COMMITTEE.

## How the System Works

The scoring system for production (or performance) classes at A. & P. Shows has been drawn up through the efforts and experience of Neil Barnett, Jim Houlbrooke and Dr Chris Morris of Ruakura. The format has purposely been kept simple to allow as many breeders as possible to participate in classes by utilising very basic production recording in their herds. Four basic considerations are used:

1. The dam of the entry is assessed for productivity.
2. The weight per day of age (of the entry) at weaning is calculated.
3. The weight per day at Show Day is calculated.
4. The breed judge visually assesses the entry.

Individual sections are calculated or assessed in the following manner:

### (1) Dam (of entry) Productivity 10 Points (maximum)

The age of the Dam is considered and the number of natural calves she has produced. (No extra points are awarded for multiple births — e.g. twins). The assessment chart is as follows:

Class Entry	Dam Age	Number Calves Born			
No. 60	2 years	1			
	3 years	2	1		
	4 years	3	2	1	
	5 years	4	3	2	1
No. 70	6 years	5	4	3	2
	7 years	6	5	4	3
	Points	10	8	6	4

**Example:** Entry No. 60's dam was two years old and had produced one calf — she scores 10 points. Entry No. 70's dam was six years old and had produced three calves — she scores only 6 Points.

### (2) Weaning Weight of Entry 10 Points per Kg. per day

Again the age of the Dam is taken into consideration.

Dam Age	Add to Actual Weaning Weight
2 years	+ 15 Kg.
3 years	+ 10 Kg.
4 years	+ 5 Kg.
Above	Nil.

**Example 1:** Class Entry No. 60. 300 Kgs at 245 days from 2 year old heifer.

$300 \text{ kgs} + 15 \text{ kgs} = 315 \text{ kgs} \div 245 = 1.285 \text{ kgs per day of age.}$

$1.285 \text{ kgs} \times 10 = 12.85 \text{ Points}$

**Example 2:** Class Entry No. 70 300 Kgs at 245 days from six year old cow

$300 \text{ kgs (no bonus)} \div 245 = 1.224 \text{ kgs per day of age.}$

$1.224 \text{ kgs} \times 10 = 12.24 \text{ Points}$

### (3) Show Day Weights 10 Points per Kg. per day

The dam influence is less so the rate of 'bonus' Kg for age is decreased.

Dam Age	Add to Actual Show Day Weight
2 Years	+ 10 Kg.
3 Years	+ 6 Kg.
4 Years	+ 3 Kg.
Above	Nil.

**Example 1:** Class Entry No. 60 weighs 500 kgs. at 400 days (Show Day) and is from a two year old heifer.

$500 \text{ kg} + 10 \text{ kg} = 510 \text{ kg} \div 400 = 1.275 \text{ kg. per day of age}$

$1.275 \text{ kg} \times 10 = 12.75 \text{ Points}$

**Example 2:** Class Entry No. 70 weighs 500 kgs at 400 days (Show Day) but is from a six year old cow.

$500 \text{ kg (no bonus kg)} \div 400 = 1.25 \text{ kg per day of age}$   
 $1.25 \text{ kg} \times 10 = 12.5 \text{ Points.}$

# Miscellaneous

## (4) Breed Judges Assessment 10 Points deductible.

Entries are paraded in the ring before the Judge who may deduct up to 10 Points for such defects as feet, joints, reproductive organs, teeth, jaws, over-finish or under-finish of an entry. The entries taken as examples No. 60 and No. 70 could end up with a final score as follows:

### Entry No. 60

Section	Points
1. Dam Productivity	10
2. Weaning Weight	12.85
3. Show Day Weight	12.75
4. Judges Assessment	
Animal considerably over-finished and showing some faults.	minus 7
Total Points	<u>28.60</u>

### Entry No. 70

Section	Points
1. Dam Productivity	6
2. Weaning Weight	12.24
3. Show Day Weight	12.50
4. Judges Assessment	
Animal totally correct and in top show condition without being overdone. No points lost	=
Total Points	<u>30.74</u>

Entry No. 60 was ahead in the first three sections but lost points in the visual assessment. No. 70 the winner.

The foregoing examples are hypermetrical – the examples have been set at the same weights and ages but it illustrates how the system works.

## How You Can Participate

To enter Production Classes all you have to do is:

- Record the productivity of the dam of the entry. Number of natural calves in the dams lifetime.
- Record the weaning weight and the age of the calf in days when weaned.
- Record the age in days, of the entry on Show Day.
- Record the weight of the entry on Show Day. Scales will be located at the Show where these classes are organised.

**Summary:** Do not be intimidated by the figures and calculations – they are really quite simple. The class is structured for yearling bulls and heifers combined. Provided some pre-organisation is done and you come to the Show with records of A. B. & C. and weigh your entries as early as you can before entering the judging ring, all points can be calculated and the Judge can make his assessment and the result can be finalised without delay.

In structuring the criteria for these classes we have tried to cover all aspects. Should you have any queries in implementing such a class at an area Show please do not hesitate to contact me.

N. J. Barnett,  
PROMOTION COMMITTEE

## Australian Simmental celebrates its first decade

The Australian Association will mark its first decade with a prestige Celebration and Sale at the Hilton Hotel in Melbourne on Saturday 6th March, 1982. A catalogue of eighteen animals selected from entries offered from leading studs throughout Australia will be offered. A Banquet and Grand Ball will follow the evening Sale.

Information on this event is available from The New Zealand Society office.

## Computer returns: 1981 Calf Entry Sheets

Members have been sent Sheets on which to record their 1981 born calves. Some of these have already been returned to us. We remind those who have not already done so as to get theirs in as soon as conveniently possible – due date was 12TH FEBRUARY 1982. If you have any queries please contact the Office.

From these Calf Entry Sheets the Computer will produce a Calving Summary which will be sent to you for checking and alteration if necessary. If you are unsure about registration of a calf when you complete your Calf Entry Sheet you can if you wish include him (or her) when you check your Calf Summary.

## 1980 Calf Registration Certificates

These are almost ready to run on the Computer. There are a few checks to make for accuracy and this will be done in the next week or two after which we hope to receive them at the office and distribute them to breeders.

## All a matter of identification

At the Royal Show in Palmerston North, Simmentals did exceptionally well. They won the Meat and Wool Cup and came second and third in the All Breeds female class to be the top beef breed of the Show.

In the Grand Parade on the final day, Simmentals had the place of honour in the beef section. The event was televised and the commentary was as usual smooth and precise. It was a pity the commentator became confused with his breeds. He will doubtless never forget that a Simmental is a Simmental and not a Santa Gertrudus! Not only did he incorrectly identify them but he 'waxed eloquent' on the history of the breed and its success in Australia! His respite was brief as Simmental breeders phoned the Showgrounds from all over New Zealand. They also phoned the Secretary who gave Television New Zealand a 'barrel' for good measure. We have received most humble apologies from several quarters and certain well known rural broadcasters are still a little pink.



# Canterbury Show

## Canterbury a strong show

Canterbury breeders have supported their Show well, one of the largest in the country, since the breed was first shown in 1977. 1981 was no exception and over twenty animals were in competition.

Winfield Goliath, owned by O. J. Osborne, now five years old, was shown this year probably for the last time. He took Senior Bull Championship, Supreme Champion Simmental and third in the Meat and Wool Cup. Goliath looked better than he has ever done and was a fine example of the breed before the public.



Oakleigh Osborne receives the 'Haulau Trophy' from Dick Kerr. For Champion Bull 'Winfield Goliath' at the Canterbury Show.

Local entries were supported by a strong team from the well known Southland Stud of W. A. Rouse at Five Rivers who entered four females and two young bulls. Two new exhibitors tried their hand this year. Colin Patterson of Lakeside and Warren Harwood from Fernside near Rangiora entered the ring for the first time with commendable results. Colin Patterson not only took some major prizes but took the Canterbury Club's 'Handlers Trophy' which was awarded for the first time for the person who gave the best presentation of animal handling and neatness in the ring.

The Club as usual had its highly successful 'Breed Centre' which was always full of people. 'Herb' the large steer, who was written up in our last issue, joined our 'Centre' on Friday (People's Day) and created tremendous interest. He is an enormous animal and has the great asset of being very docile.

Individual results for classes were as follows:

### COW AND CALF (Over two years)

- 1st IRISH FLORENCE by Panther — O. J. Osborne, Leeston
- 2nd SUNDOWNER RUTH by Scottish Neff — O. J. Osborne, Leeston

### HEIFER (Two years)

- 1st EAST DOME KAYE by East Dome Hunter — W. A. Rouse, Five Rivers
- 2nd WINFIELD KISS ME KATE by Winfield Goliath — O. J. Osborne, Leeston
- 3rd EAST DOME KARABEL by Scottish Extra Special — W. A. Rouse, Five Rivers

### HEIFER (Yearling)

- 1st EAST DOME LILAC by Balig Agent — W. A. Rouse, Five Rivers
  - 2nd EAST DOME LYLA by Scottish Big Michael — W. A. Rouse, Five Rivers
  - 3rd WILDERNESS ROSEY by Scottish Pride — G. Habberjam, Southbridge
- SENIOR CHAMPION FEMALE & PENDEEN CHALLENGE TROPHY — Irish Florence  
RESERVE CHAMPION SENIOR FEMALE — East Dome Kaye  
JUNIOR CHAMPION FEMALE — East Dome Lilac  
RESERVE JUNIOR CHAMPION FEMALE — East Dome Lyla



Mrs Diana Almond of N.S.W. presenting the 'Pendeen Trophy' to Sue Osborne for her Champion Cow 'Irish Florence'. With her is Judge Stan Crosson of Waimate.

### BULL (Over 2 years)

- 1st WINFIELD GOLIATH by MMB Rebholz — O. J. Osborne, Leeston

### BULL (2 Years)

- 1st WINFIELD KNIGHT by Winfield Goliath — O. J. Osborne, Leeston
- 2nd MARAETOTARA LORDSHIP by Usch — G. Black, Waimate

### BULL (Yearling)

- 1st SPRINGBROOK MACCRIMMON by Aroha Humphrey — C. J. Patterson, Lakeside
- 2nd PENBROOKE A. F. LAURIE by Acajou — B. R. Barclay, Brookside
- 3rd WILDERNESS LEO by Scottish Prinz — G. Habberjam, Southbridge
- 4th WILDERNESS LUCIFER by Acajou — G. Habberjam, Southbridge

### SENIOR CHAMPION BULL & HARLAU CHALLENGE TROPHY — Winfield Goliath

### RESERVE SENIOR CHAMPION BULL — Springbrook MacCrimmon

### JUNIOR CHAMPION BULL — Springbrook MacCrimmon

### RESERVE JUNIOR CHAMPION BULL — Penbrooke A. F. Laurie

### SUPREME CHAMPION SIMMENTAL — Winfield Goliath

# Canterbury Show



Colin Patterson of Lakeside. A new exhibitor prepares his Junior Champion Bull 'Springbrook MacCrimmon' for the Grand Parade. Colin also won the Canterbury Club Herdsman trophy for Presentation & Handling.



'Winfield Goliath' Supreme Champion Simmental leads the Simmental Section of the Grand Parade.



A Southland competitor who brought a team of six entries through to Canterbury. Woody Rouse leads in the Grand Parade.



L-R. Sue Osborne, Peter MacWilliam (Australia), Woody Rouse and Eppi Millar of Melbourne who has been working as a stud groom in New Zealand for the past six months.



Brian Barclay of Brookside with his Reserve Champion Junior Bull. Brian switched rolls at Kirwee the following week when he judged Simmentals and the All Breeds Class.



Time to relax at the Simmental Centre. L-R. Ian Johnstone, Melinda Carter (west Melton), George Habberjam (Southbridge), Graham Black (Waimate), Warren Harwood (Rangiora).

# Shows

## Poverty Bay Show

(Gisborne)

Two Hawkes Bay Breeders, J. P. Absolom and H. R. Lowry took a good group of Simmentals to the Poverty Bay Show in October; the second year the breed has been shown in this area. Highlight of their attendance was John Absolom's winning of the Meat & Wool Cup with 'L.J.B. Jade'. Gisborne is an area with a large beef cattle population but few Simmentals have gone to the area until recently. Since the 1980 Show a number of bull sales have been made and the 1981 success can only promote the breed further in this area.

Class results were

### BULL (Yearling)

1st (& Champion) Pukekohu Simmentals (H. R. Lowry).

2nd (& Reserve) J. P. Absolom.

3rd Pukekohu Simmentals.

### BULL (Senior)

1st (& Champion) 'L.J.B. Jade' (J. P. Absolom)

Winner of Meat & Wool Cup.

Supreme Champion Simmental.

### HEIFER (Yearling)

1st (& Champion) J. P. Absolom

2nd (& Reserve) Pukekohu Simmentals.

### COW (Senior)

Champion & Grand Champion Female Pukekohu Simmentals.

Reserve J. P. Absolom.

## Hawkes Bay Show

(HASTINGS)

The Hawkes Bay Show, which has always been well supported by Simmental Breeders hit the top in October when 'L.J.B. Jade' won the Meat & Wool Cup. (John Absolom's second win of this trophy). A strong contingent of cattle were presented and results were as follows: (Judge Mr J. R. Houlbrooke, Dargaville.)

### BULL (Senior)

1st (Champion & Supreme of the Breed) 'L.J.B. Jade' J. P. Absolom.

Winner of the Meat & Wool Cup. 2nd (& Reserve) Glen Anthony Stud (A. H. Thompson).

### BULL (Two year)

1st Glen Anthony Stud.

### BULL (Senior Yearling)

1st Glen Anthony Stud

2nd & 3rd Pukekohu Simmentals (H. R. Lowry)

### BULL (Junior yearling):

1st Pukekohu Simmentals.

2nd J. P. Absolom.

### BULL (Junior Champion):

Glen Anthony Stud.

Reserve: Pukekohu Simmentals.

### COW (Senior):

1st. (Champion & Champion Female) Pukekohu Simmentals.

2nd (& Reserve) Glen Anthony Stud.

### COW (Three Year):

1st J. P. Absolom.

### HEIFER (Two year):

1st Glen Anthony Stud.

2nd B. I. Harding.

### HEIFER (Yearling):

1st (& Champion) J. P. Absolom.

2nd (& Reserve) Glen Anthony Stud.

3rd Pukekohu Simmentals.

### HEIFERS (Pen of two yearlings):

1st J. P. Absolom.

2nd Glen Anthony Stud.

### BULL & HEIFER (Yearling):

1st Pukekohu Simmentals.

2nd J. P. Absolom.

3rd Glen Anthony Stud.

### Champion Group

1st J. P. Absolom.

2nd Glen Anthony Stud.

### Sire Progeny Class

1st Pukekohu Simmentals

### Performance Class

1st Glen Anthony Stud.

2nd Pukekohu Simmentals.

3rd J. P. Absolom.

### All Breeds Beef Export Class

Winner Irish Empress and Calf, Pukekohu Simmentals.

## Kirwee Show

It has become a pattern amongst a few Canterbury breeders to take cattle to the Courtney Show held at Kirwee (a few miles west of Christchurch) on the weekend following the Canterbury Show. This day has proved to be not only a happy and relaxed day for participants but an excellent presentation of our breed. Informality is the keynote of the day and the competition in the beef section is friendly and there is a good liaison between all breeds and breeders.

This year, Simmentals were the majority breed and took the Champion of All Breeds against the Herefords and Angus entries (about fourteen animals in total). Such events give opportunity for new people to have a crack at judging and this year Brian Barclay of Brookside did an excellent job in the Simmental classes and in the inter-breed competition. Exhibitors were George Habberjam who took Champion Bull, Champion Heifer and Champion of All Breeds; Melinda Carter with Champion Cow, Colin Patterson and Warren Harwood.



Champion Simmental Bull & All Breeds Champion at the Courtenay Show at Kirwee with exhibitor George Habberjam.

# Simbeef



## Also at Frankton

Two 'Simbeef' bullocks that sold for over \$1,000 at Frankton in November. The one on the left is a three year Simmental/Hereford cross and the other a four year Simmental/Friesian. Breeder was Mr. Jim Trafford of Whakatane who is a keen cross-breeder. L-R. Lynn Collins (Dalgetys), Purchaser Jack Jefferies, Jim Trafford, Fred Mead (Auctioneer). Both bullocks sold for \$1,050 (Herb of Addington sold for \$1,085).



## Big Steers sold at Feilding

Alan Perry of Waimiro Land Co., near Palmerston North has had a couple of large bullocks on his property for some time. At six years of age he decided they should go to market. One a seven-eighth brought \$1,000 and the other a three-quarter brought \$940. Both were purchased by a Feilding butcher. They made an impressive sight at the Feilding Sale yards as can be seen by the photograph.

## 'Simbeef'

Simmental cross cattle continue to top markets and bring high prices. We have had several reports in the past few weeks.

## Addington (Christchurch)

October 4 year bullock \$910 (top price)

November 3 year steer \$606 (top price)

November 21 two year steers \$440 - \$500 (top price)

November 29 cows and calves \$394 (top price)

## Frankton (Hamilton)

November 2 bullocks (3 and 4 year) \$1050 each

## LEVELS SIMMENTAL STUD

EST. 1971 HERD NO 3



**AN ESTABLISHED PUREBRED FEMALE HERD OF VARIED BLOODLINES  
FROM WHICH PROGENY WILL BE OFFERED AT THE 1982 SOUTH ISLAND SALE**

**PUREBRED AND GRADED STOCK AVAILABLE**

Enquiries welcome to: RODNEY COX, THE LEVELS, No 4 RD TIMARU. TEL. 82-418

# Junior Membership

Hi,

Happy New Year to you all.

How are the Junior Herdsman Award entries coming on? Remember everything has to be in to me by the end of March. Don't panic though, that is only a reminder. There is still plenty of time left to show your (by now well trained) animal, and write up the diary.

In this issue we are having a 'spin a yarn' – short story competition. There will be three sections:

1. Humorous

2. Factual

3. Personal experience – where you write about an animal you have had or known.

It doesn't have to be very long just interesting and your own work. Age will be taken into account so everyone has an equal chance to win. Closing date is the 1ST APRIL. That will allow results and best entries to be printed in the next magazine issue.

The idea for a short story competition came from Novalea Rolley – thanks Novalea.

Novelea also sent in a neat photo of 'Sam', She writes:

Dear Sandra,

This photograph is of our steer Sam, that we used to have. He loved apple cores and we fed him more than anyone has probably eaten in a lifetime! When friends come over we go over to his paddock with a bowl of apple cores then while we feed him and talk to him Dad lifts us on his back, your're lucky if you get him to walk a few steps with you because he usually just stands there letting everybody scramble round, scratching his back and rubbing his ears.

In the picture he is only a month old.



You scratch my back, I'll scratch yours. James Barclay of Brookside with his father's bull at the Canterbury Show.

## JUNIOR PHOTO COMPETITION

We thank those who sent in photos of their favourite pets. Deciding the winner was quite a job as there were such a variety. The winner was Mandy Graham of Parnassus – congratulations Mandy, we hope people will continue to send us photos and descriptions of their pets. They are fun to receive and give our magazine added interest.

## Jokes

Neville Wallace-Wells sent in some great jokes for us.

Q. What does a sea monster eat?

A. Fish and ships

Q. What did the sea say to the shore?

A. Nothing, it just waved.

Q. What do you get when you cross a sheep dog with a jelly?

A. The colliewobbles.

Thanks Neville.

## Simbeef – Weaner sales

With our weaner sales coming up in the next few months, we urge vendors to capitalise on our 'Simbeef' success. Make sure your calves are advertised as 'Simbeef' weaners and that they are tagged with our yellow tags. Tags generally stay with the animal and by tagging your calves you will ensure they go through to sale as 'Simbeef' steers.

Also please keep a record of what happens in your local markets, how many calves, top prices, averages, etc. Just to say we got a top price does not mean much unless we know what some of the other prices were. If you do not let us know we cannot promote you or the breed.

THE TATTOO LETTER

FOR 1982 IS

**'N'**





**Sherwood Simmentals**  
**COMPLETE HERD DISPERSAL SALE**  
**THURSDAY 1st. APRIL 1982**  
**ON THE PROPERTY**

★ 6 PURE IN-CALF COWS

★ 18 PURE RISING 2YR BULLS

★ 16 PURE IN-CALF RISING 2YR  
HEIFERS

★ 28 PURE WEANER BULLS

★ 30 PURE WEANER HEIFERS

★ HERD SIRE "MOSSY ROBIN"  
1980 Royal Show Junior Champion

★ 60  $\frac{7}{8}$  IN-CALF COWS.

★ 5  $\frac{7}{8}$  IN-CALF 3YR HEIFERS

★ 21  $\frac{7}{8}$  IN-CALF 2YR HEIFERS

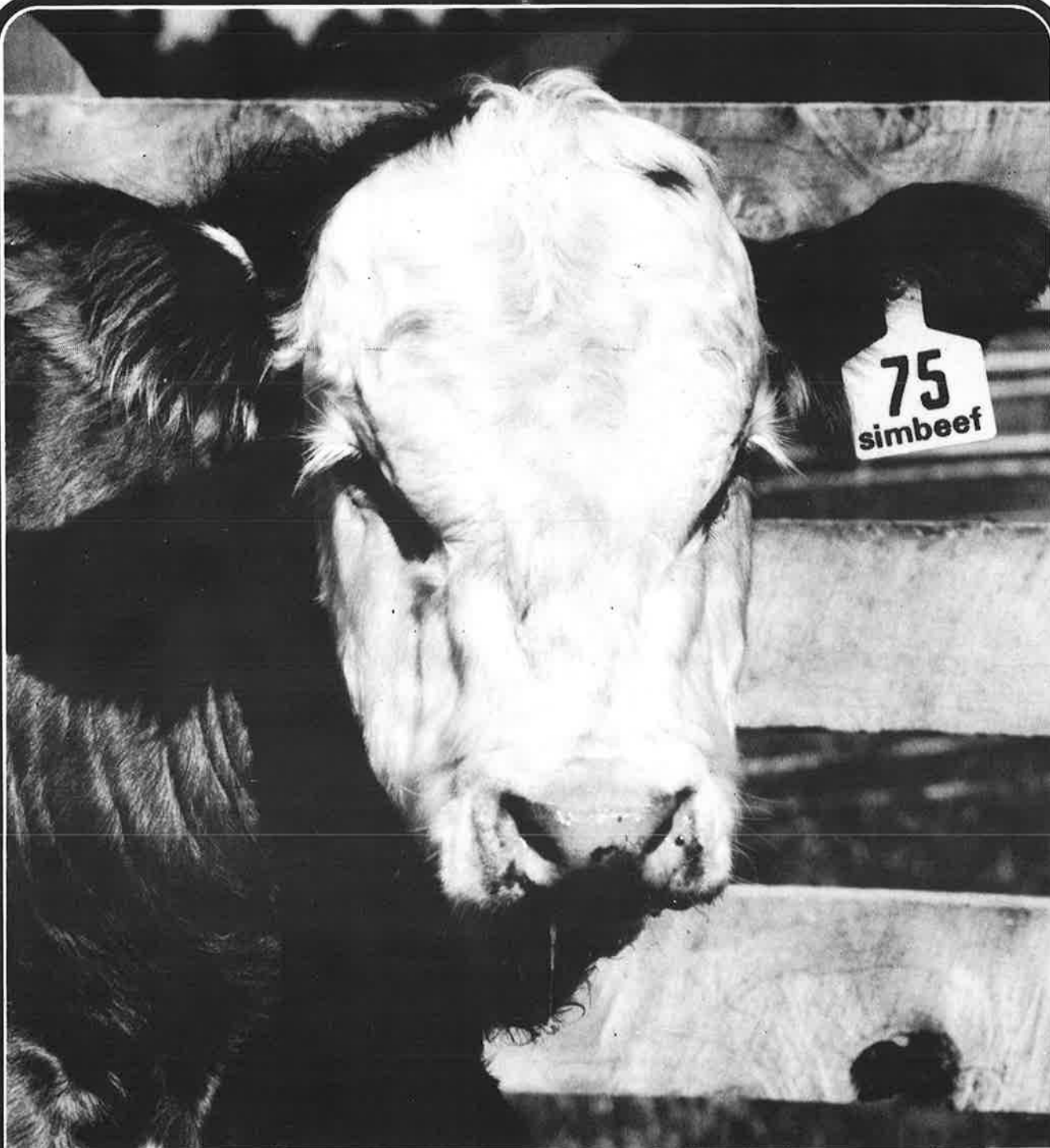
A unique opportunity for Simmental Breeders to supplement their herds with stock of proven quality from this well known property. Founded in 1972 from top polled Herefords the Sherwood Stud has been developed, through careful selection and diligent culling, into what must rank as one of the top grading-up herds in Australasia. From this herd all calves born this season will be of purebred status and of interest will be the fact that at least 16% of the progeny are polled.

The herd is only being offered for sale due to the pending retirement of the owner who has sold his property.

AUCTIONEERS, IN CONJUNCTION: WRIGHTSON NMA AND ALLIED FARMERS

*Pre-sale inspection by arrangement with the owner welcomed*

**ROY SMITH, SHERWOOD HILLS**  
**R.D.2 CAMBRIDGE**  
**PHONE: MAUNGATAUTARI 889**



# **Allflex**

**the World's  
No.1 livestock  
identification  
system**

® Manufactured by DELTA PLASTICS LTD.,  
P.O. Box 940, Palmerston North.