

# **new zealand simmental**

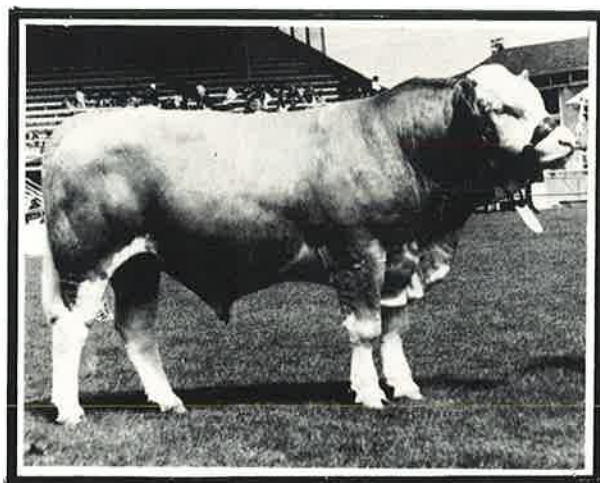


**summer issue : december 1982 : number eighteen**

# THE LEVELS

## HERD No.3

FOR SELECTION OF SIMMENTALS FROM AN ESTABLISHED  
DAM HERD OF VARIOUS BLOODLINES OUTCROSSED  
WITH LEADING SIMMENTAL SIRES.



ONE OF THE LEVELS SIRES . . . LOCKAMDAY BT JOLT.  
SUPREME CHAMPION SIMMENTAL CANTERBURY SHOW 1980

1982 N.Z. Royal Show Winners . . . 'Levels Monarch' by 'Scottish Extra Special',  
Junior Champion Bull . . . 'Levels Morley' by 'B.T. Jolt' . . . 4th in Junior Yearling  
Class of Fifteen.

Both these young Levels Sires will be for sale in 1983

**THE LEVELS, NO. 4 R.D. TIMARU, SOUTH CANTERBURY**

Contact Rodney Cox — Phone 82418 Timaru

# THE SIMMENTAL CATTLE BREEDERS'



## SOCIETY OF NEW ZEALAND (INC.)



118 VICTORIA STREET, CHRISTCHURCH 1, NEW ZEALAND.

P.O. BOX 25·100, VICTORIA STREET, CHRISTCHURCH. Phone 793·166

## Contents

|                                    |                |
|------------------------------------|----------------|
| Editorial . . . . .                | 1              |
| People . . . . .                   | 2              |
| Profile . . . . .                  | 3, 4           |
| Simmental World Congress . . . . . | 5, 6, 7        |
| Shows . . . . .                    | 9, 15          |
| Royal Show . . . . .               | 10, 11, 12, 13 |
| Sales . . . . .                    | 15, 16         |
| Annual Meeting . . . . .           | 17, 18, 19     |
| Simbeef . . . . .                  | 20             |
| The Computer . . . . .             | 22             |
| Miscellaneous . . . . .            | 23, 24         |

## Advertisers

The Levels (R. N. S. Cox)  
Pendeen (Mrs J. C. Hall)  
H. R. Lowry  
Easybail Enterprises  
Pukekohu Simmentals  
Supermix Stockfoods  
Guthreys Breeding Service  
Mohair Producers Association  
East Dome (W. A. Rouse)  
D. Kerr  
Rissington Simmentals  
Simbeef

## Office Staff

Ian S. Johnstone  
(Society Secretary)  
Phone: Christchurch  
(Bus.) 793-166  
(Pvt.) 487-572

Mrs Ann Booth  
Mrs Yvonne Kingsland  
Mrs Paddy Archer

### OFFICE CLOSURE:

The Office will be closed from Christmas Eve until Monday 10th January. Matters of urgency may be referred to the Secretary at his after hours number or members of the Council.

## EDITORIAL

Someone recently suggested that they were 'too late' to start breeding Simmentals — maybe they were 'too late' to have gone farming.

In eleven years we can look back and see changes. Breeders, strong in the first few years have disappeared to be replaced by others even stronger. Even today we accepted a new member. A situation of change will always exist — without it we will have no advancement, no new ideas or stimulation.

1982 has been far from easy in every aspect of farming, but even bad patches are subject to change. It is never 'too late' to do anything, including breeding Simmentals.

## Council Members

### President:

R. N. S. Cox, The Levels, R.D. 4  
Timaru.

Phone: Timaru 82 418

### Vice-President:

J. R. Sutton, Waihaorunga, R. D. 7  
Waimate.

Phone: Waihaorunga 878

### Councillors:

N. J. Barnett, Arohena, No. 7 R.D.,  
Te Awamutu.

Phone: Pukeatua 573

J. D. Graham, Waingaro, R.D.  
Parnassus.

Phone: Parnassus 809

J. R. Houlbrooke, South Road  
R.D. 2 Waipu. Northland  
Phone: Waipu 15

H. R. Lowry, Pukekohu, P.O. Box 2369  
Stortford Lodge

Hastings.

Phone: 86 236

R. G. Macdonald, Governors Bay  
R.D. 1, Lyttelton.

Phone: Christchurch 299 739

A. B. Perry, Penny Road  
R.D. 9, Palmerston North  
Phone: Rongotea 772

### CHAIRMAN OF COMMITTEES

FINANCE: R. N. S. Cox TECHNICAL: J. R. Sutton

PROMOTION: H. R. Lowry SALES: J. D. Graham

# People

## THE ANNUAL DINNER

Over a hundred members and their wives and friends attended our 1982 Annual Dinner following the National Sale on Tuesday, 22nd June. Venue for this year's function was away from the Hotel where most were accommodated and this proved to be a highly successful move. Through the good organisation of Alan and Clare Perry, the facilities of the Manawatu Club in Palmerston North were made available and a most successful function resulted. With excellent surroundings, blazing log fires on a cold night and superb food it could hardly be anything but successful. Later in the evening a 'disco' arrived, (having successfully lost himself in greater Palmerston North for an hour or so) and the assembly was in good fettle to undertake some strenuous dancing. The skills of anyone running a disco are remarkable. They seem to have the ability to gauge a mood and cultivate it. Our disco was no exception and he drew people to the dance floor until they were exhausted. When the evening wound up around 1 p.m., a number of well-known people were observed to depart on to the wet pavements in their stocking feet – one did even better than that and we did not notice whether he was carrying his shoes and socks!

We are grateful to the Manawatu Club and their staff for allowing us to use their gracious premises and we hope we did not disturb the peace of those worthy sheep breeders who were the founders. We also thank Alan and Clare for their excellent organisation and choice of food.



## CHRISTMAS GREETINGS

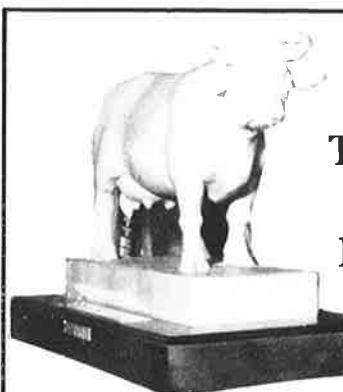
To our members, wives and families and all those other people with whom we have association during the year, may we take this opportunity of saying thank you for your co-operation, help and hospitality during the year.

Every good wish to you all for a Happy Christmas and a successful 1983 from those at the Society Office.

*Jan Johnstone*

*Ann Dooks*

*Yvonne Kingsland*  
*Paddy Archer.*



## THE LEVELS PROMOTION AWARD

The Levels Award for the individual who has done most to promote the Simmental Breed went this year to a 'duo' team, John and Star Absolom of Rissington Station in Hawkes Bay. The Rissington Stud was founded in 1972 when a comprehensive grading-up programme was started using a variety of base breeds. As the influence of Simmental bloodlines increased, Rissington cattle rapidly became known for their success in weaner sales and carcass competitions in the area.

In 1974 the first purebreds were purchased and since then John and Star have become increasingly predominant in both the sale ring and at Shows culminating in their outstanding success in the showing in the 1981 season when their premier sire 'LJB Jade' won the Meat and Wool Cup at Gisborne, Hawkes Bay and the New Zealand Royal Show, a feat that has been equalled on probably a very limited number of occasions. The Rissington Stud is only one sector of the Absolom's cattle activities. Their prowess in production of top commercial cattle is equally successful and Rissington has sold more bulls to the commercial breeder than any other herd in New Zealand.

This year they will offer for sale thirty-five rising two-year-old bulls. John and Star Absolom work as a team in the true sense of the word, sharing the chores of farming, drafting, calving, show and sale preparation. On top of this they promote what they produce, which places them as one of the top producers of the breed in New Zealand and undoubted qualifiers for the 1982 Levels Promotion Award.

## 'JADE' DOES IT AGAIN ...

John and Star Absolom have again had great success with their bull 'LJB Jade'. Last year he won the Meat & Wool Cup at Gisborne, Hastings and the Royal at Palmerston North. This year he has had a repeat performance at both Gisborne and Hastings. Five Meat & Wool Cups in a row is a very creditable performance and can have been equalled by very few (if any) other animals.

We would have greatly liked to have had 'Jade' at the Royal in Christchurch, but the costs involved, and also the risk factor, in trucking a bull such a distance and crossing that unpredictable 'ditch' made it unviable. Anyway, if we had 'Jade' we would not have had the pleasure of John (and Star) in the Judges' team.



## Simmental success story for Hawke's Bay farmer



John Absolom

John and Star Absolom farm Simmentals on a 1 900 acre property at Rissington.

They have been breeding Simmentals since 1972 and have recently won the Meat and Wool Cup at the Gisborne, Hawke's Bay and Royal Shows with one of their stud bulls.

The Absoloms also run 3 000 commercial Coopworth ewes. They did have a Coopworth stud but with the establishment of the Simmental stud, they sold it off.

The farm is inland from Napier on easy, rolling hill country. Its soils are mainly sandy loams and the farm gets 40 inches of a rainfall a year.

The farm has been in the Absolom family for 100 years and was part of the old Rissington Station.

It ran Romneys and Angus before the change to Simmentals and Coopworths. The property was one of the earliest Romney studs established in New Zealand.

John Absolom runs the farm with the help of his wife, a married shepherd and his father.

Rissington farmer John Absolom says he has reached the satisfying stage where the demand for his Simmental bulls is outstripping the number he can supply.

John and his wife Star have been breeding Simmentals since the 1972 calving.

John says he wasn't happy with his traditional calves and "when you're young you think there are ways of improving".

John had put some Friesian blood through his herd and even though they did not seem to measure up to what he wanted, they gave him an idea of the advantages of having that extra milk from his cows.

During a trip to America to look at the beef industry John and Star saw that the Americans seemed to be pouring millions of dollars into Simmentals so they thought there must be something to the breed.

John got as much information as possible about them and found their main attribute was that the breed had been performance recorded in Europe for many decades.

### Semen available

Then Simmental semen became available in New Zealand in 1971.

He used AI on his Hereford and Angus base herd and bought in a number of weaner heifers ending up with 100 half-bred heifers which gave him a big enough base to get going.

"One thing I had drilled into me in America was if you're going to make progress in breeding, you must have the numbers."

The Absoloms had a 300 cow herd "so I knew I had something to work with," John says.

After this start it was a matter of up-grading the herd to fifteen-sixteenths Simmental, the point at which the cattle become pure-bred.

At the beginning the Absoloms were using solely AI.

"When we began, AI straws were only \$5 to \$10 which was good as there weren't any bulls available," John says.

Then he was lucky enough to win in a ballot one of the 10 pure-bred French Simmental heifers brought in by the Government in 1973.

"She is the mother of 'Rissington Extra' — our senior herd sire. She has produced eight calves from six matings plus four calves by transplant."

Now he has several bulls of his own there is not so much need to use AI.

"All 100 yearling heifers have one cycle of AI and then one cycle of a bull. I still see the benefits of AI especially when, for example, you can use a bull with information on several thousand of his calves. These numbers make it really meaningful."

John says there is still a lot of new Simmental blood coming into the country through AI, but unless it has performance background to back it up he would rather use his own bulls.

He says the biggest advantage of the Simmental is its ability to gain weight so that it can be marketed at whatever stage the farmer requires.

### Milked

"The Simmental is a dual purpose animal which is milked in Europe and some parts of New Zealand. With that extra milk the calf gets such a head start and from there, they start to grow.

"We have farmers crossing our bulls over their Angus and Hereford cattle and getting a lift of between 20 and 30 kilos above their conventional cattle run in the same mob.

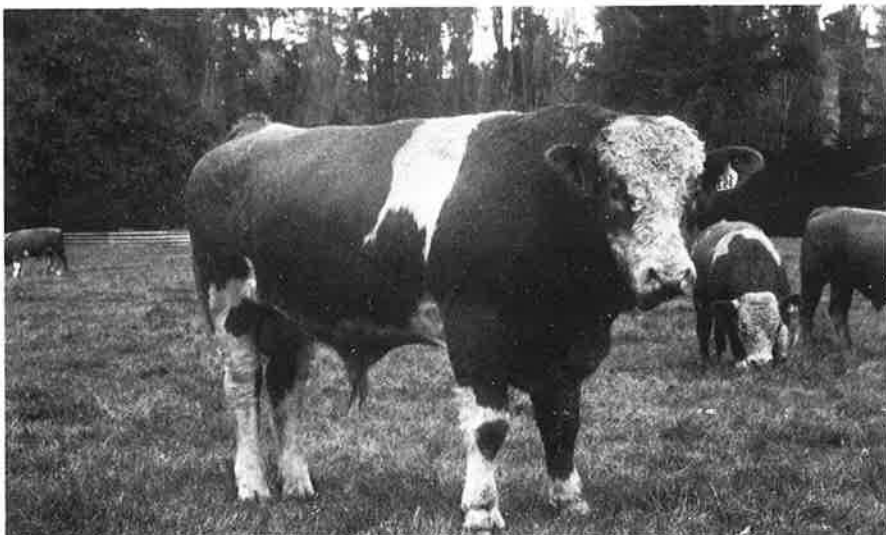
"Farmers who buy conventional cattle are tickled pink if they can make a profit margin of \$100 from them but a farmer who is buying my weaners is looking at a \$200 margin. It's just money in the bank," John says.

He says the meat is lean which is what the export trade is looking for.

In early December he goes through the 140 or 150 bull calves that are produced and, with a combination of their parent's records and eye appraisal, the best are selected.

This year he kept 80 and sold the rest as steers to Stortford Lodge at an average of \$222 with the top line bringing \$12 or more than the best price of the day.

The 80 bulls were then weighed at



One of the Absolom's bulls.

# Profile

weaning, yearling and the 18 month stage, the tail end culled and the final 40 odd kept for sale.

"This year we had 50 but we cut them back to 35 to sell from the original 150. We are really only selling the top-end and even after they have been sorted out, sometimes something can go wrong and we end up pulling some more out. We never sell anything we are not happy with.

## Best calves

"This year I produced my best bull calves ever, they are getting better and better.

"The large numbers mean we have more scope so we can be ruthless in our culling. This is starting to pay off now because, although we have no intention of increasing our herd size, we're slowly increasing the number of bulls for sale. Our selection over the past 10 years is starting to show results," John said.

John says because the Simmental produces a bigger calf, he is very conscious of minimising calving difficulty.

"We calve everything down here as a two-year-old and we cull anything that is assisted at calving. We recommend to our bull buyers that they put them over cows to start with until they are confident about the breed and know what they are getting.

"The best weight gain in the world is useless without a live calf."

If John's cows do not get into calf in their second calving, they are culled. Calving has been condensed to just 45 days.

"We've got to the stage now, where the cows are virtually culling themselves. If they don't perform they are down the road."

The Absoloms are gradually moving into breeding polled Simmentals provided they can match or better the horned cattle for performance.

"The breed is naturally horned but we have got polled ones coming through from the Angus and Polled Hereford side of our herd and now there is semen from polled bulls coming in from Canada. We used some last year and our biggest calf at weaning was a polled calf."

## Exotic boom

John said although he began breeding Simmentals during the exotic boom, he chose to grade up the herd rather than purchase purebred animals. He says it was easier that way to cull a non-performer when she had not cost several thousand dollars to purchase.

"In the early days of the boom, everyone went stupid and prices up to \$48 000 were being paid for some heifers. In a smaller way we were being offered fantastic money for heifers. We bought some at \$300 for half-



Part of the Absolom herd.

bred heifers and a month later we were offered \$600, but we didn't sell."

In its heyday the Simmental Society had 1 000 members, that has now reduced to 500.

John says the Simmental Society rules are very liberal and Simmentals can be crossed with any breed.

"The society believes it is more important just to get the progeny on the ground and I think that philosophy has stood the society in good stead."

John and Star have had big successes showing their cattle.

"Even though we don't like showing our cattle we realised that if our long term aim was to sell bulls we had to show them.

"We take all opportunities to promote our cattle to get them out in front of the public at shows, weaner sales and carcass competitions.

"We've been very lucky because we've won a few."

## Cup winner

One of the Absalom bulls, LJB Jade which they purchased in 1980, has won the Meat and Wool Cup at the Hawke's Bay, Gisborne and Royal Shows this year.

Rissington Extra has sired two carcass competition winners which John feels is more meaningful than his show wins.

But as the cattle have become known, demand by potential bull buyers has become strong.

"The demand is such that we have more buyers than bulls now and we will be forced to auction the bulls on the farm next year."

At present the Absoloms have a policy of selling their bulls over a two week period.

They say this forces potential bull buyers to make up their minds and also means they can get all the animals ready at the same time.

"Over half the bulls go into Gis-

borne and the often heard criticism that they would be no good on the hills has been well and truly laid to rest."

John, who says the Simmentals have good feet, guarantees his bulls and follows sales up with visits to his clients some time later to make sure there have been no problems.

"It is much better for a client to tell us of any difficulties rather than him telling his neighbour, though so far there have been very few problems," John says.

## Beefplan

John is a member of Beefplan but he says he does not make a big issue of the records to customers unless they want advice to help make up their minds.

"If I'm doing the job properly they shouldn't need to read them.

"The important thing is to make a sale. Buyers usually sort out what they want and then look at the records. The records are only a guide. We price our bulls according to their genetic potential."

He believes it will be some time before people start buying just on records although he says people use them more now than they used to, especially younger farmers.

But he said performance recording is pointless unless the marketing side is sorted out.

"You have to know what your customer does or doesn't want."

John feels it is sad that farmers are going out of cattle without looking at all the options. He believes there is money to be made with the new breeds and says he has many clients to prove it.

"We are just going to have to make our cattle work for us more and produce something quicker. We need animals that are going to perform at an earlier age and get to a bigger weight," he said.

# Simmental World Congress 1982

A contributed article —  
by **Jim Houlbrooke, Councillor**

On **29th June** a contingent of ten New Zealanders assembled in Edinburgh, together with delegates from around the World. The thick Scottish mist which greeted us at the airport was the last sign of a spell of miserable weather which had haunted the Congress organisers for the past couple of weeks. It turned out to be the only rain to fall during the Congress and in my case, I did not see another drop till I returned to New Zealand five weeks later.

That evening everyone attended a civic reception at which the official delegates from each country were presented to the Lord Provost.



*New Zealanders at the Congress:  
L-R, Jim Houlbrooke (Northland), Jocelyn Hall (Canterbury),  
Noeline & Tom McBride (Northland), Rosemary & Harley  
Smythe (Dannevirke), Gwen Houlbrooke (Northland), Willie  
Eccles (Waikato).*

**30th June.** We were transported by coach to the Scottish Milk Marketing Board A.I. stud at Perthshire where their current Simmental sires were paraded. Rather sadly, their system entails the slaughter of all the bulls once sufficient semen has been collected, so the old favourites like Herod and Neff are now only photos on the wall, although rather surprisingly to us, they are still in constant demand, particularly in the case of Neff whose recent progeny we were going to see at numerous venues, including the Royal Show. Big Michael had been slaughtered only the previous week and with his wonderful temperament had been a real favourite of the staff.

Prinz and Extra Special were the oldest survivors, with Plato, Helli, Striker and Marder making up the younger brigade. Extra Special still shows his class; Plato a very useful type with an unfortunate black patch on his back. Striker a first class bull, with great length and smooth muscling, walking well on sound legs and feet. Helli was suspect in the latter department and I will comment on Prinz later.

Next stop was Strathisla Farm in the valley of the Isla river in the County of Angus. After a barbeque lunch we inspected a herd of 300 blue-grey suckler cows of Irish origin, which were mated to Simmental bulls to produce calves averaging 360 kg at weaning (295 days). The senior herd sire was Plurendon

Geraldo, a magnificent meaty bull with muscling to rival Prinz and a record M.L.C. performance test, 400 day weight of 729 kg. After making top price at the Perth Sales in 1979 and being champion bull at the Royal Highland Show, it was somewhat surprising to see him being used in a commercial operation. He was also mated to the dozen top quality purebred cows run on the property. One of these cows had given birth to, and reared a total of seventeen calves and looks capable of extending this record.

**1st July.** The technical session of the Congress was held in Edinburgh University. After the official delegates had attended the business session, including the election of new officers, Lord Home officially opened the Congress, followed by four papers relevant to Simmental's role in the meat industry, delivered by speakers of note in their field. Space does not allow a full resumé so will just include a few points of interest I jotted down.

**U.K. Beef Scene** — Beef originates from 1.5 million beef suckler cows and 3 million dairy cows.

Source of imports show major shift from Argentine and Australia to E.E.C. and particularly Eire.

Exports in last two years grown from 10,000 to 152,000 tons.

Export of 350,000 dairy bred calves to E.E.C. Decline of 10% in beef consumption during 1981 of major concern.

Swing to younger slaughter age and increased use of bulls instead of steers.

The use of Canadian Holstein crossed over the Friesian poses a real threat to the dairy beef industry, due to inferior carcass of Holstein. A fortunate spin off occurs, when to counter this, sires of muscular (Continental) breeds are used to regain carcass quality in surplus progeny. This raises the interesting point of the importance of colour marking, e.g. progeny from a Friesian cow by a dark red Simmental bull will most likely be black and white and consequently indistinguishable in the saleyards from the ill favoured Holstein Cross, whereas the progeny from a light coloured Simmental bull from the same cow should turn out grey and white and receive a premium in the saleyards of £20-£30. (A thought! Should New Zealand breeders with light coloured bulls to sell be promoting this aspect to the commercial Angus sector?)

Suckler cow herds in U.K. Average only 15 animals and the beef industry is built intirely on crossbreeding.

Cull cow beef, used in the fast food section is an important and profitable product. A point not to be overlooked is that the extra profit from the cull cows of the heavy breeds, compensates for their poorer calf production per unit of weight.

Mr C. Cullimore, Managing Director of Dewhurst Ltd, with a chain of 13,000 butcher shops, in his address made some very gloomy predictions on the future of the beef trade. In his opinion, there would be less demand for the traditional prime cuts, with the main requirement being for large quantities of cheap manufacturing meat, supplied from bulls and cull cows, which would be tenderised and flavoured artificially and presented to the housewife as a guaranteed article, in contrast to the present road of beef or rump steak, whose quality cannot be gauged till it is on the table.

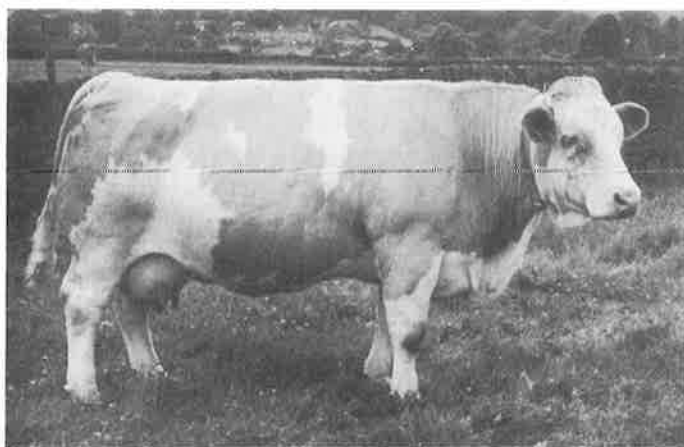
# Simmental World Congress 1982

That evening was spent at a function where the entertainment, the food and the drinks were all of authentic Scottish origin. Highland dancing is thirsty work and as the only alternative to whisky and water was whisky without water by midnight things were somewhat of a shambles. Any reserve that existed between the different national groups was completely broken down and the hilarious spectacle of the long suffering interpreter girls trying to organise their groups of happy, but unco-operative Germans, French, African and Americans to their correct buses, while the Italians were all singing with great gusto will remain a memory to chuckle over.

**2nd July.** A rather jaded party boarded their coaches to depart Edinburgh and head south, making a midday call at Hardgrove Farm on the Scottish side of the Solway Firth, owned by Mr J. G. Marshal, who has exhibited his Solway Simmentals throughout U.K. with outstanding success. On display was a fine line up of Solway cows, including many well performed show winners together with a number from neighbouring breeders. The assembled line of young bulls failed to impress owing to doubtful mobility. Commercial cattle to be seen were lines of both Gallaway and Blue Grey cows with Simmental calves at foot.

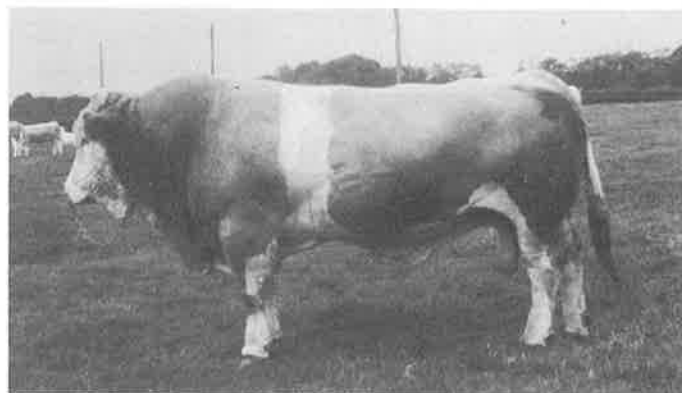
From Hardgrove we travelled south through the famed scenery of the lake districts to spend the night at Lake Windemere, after an exhilarating excursion on the ferry.

**3rd July.** Travelled on to Chatsworth House, the magnificent home and country estate of the Duchess of Devonshire, Patron of the British Simmental Society. This time we saw no bulls, but as we were coming to expect in the U.K., the cows were of a high calibre. One thirteen year old cow belonging to Philip House, the President of the British Society, provided visible proof of the longevity of the breed, still a regular breeder and plenty of eye appeal. A sumptuous meal and a tour of the mansion and we were on our way to Warwickshire, our home for the next three nights.



*A Quality Cow on the Chatsworth Estate.*

**4th July.** A day spent sightseeing in Stratford-on-Avon and the Cotswolds area. Also a visit to the Bad-dington Estate where the biggest herd of purebred Simmentals in U.K. is farmed (over 200 in number), known as the Stirling Stud. It has as its Senior sire, Heywood Kennedy, one of the glamour bulls in U.K. We saw him in natural condition running with a large herd of cows and he impressed me as a free moving bull with excellent conformation and temperament. We saw a number of his progeny and they all had that something extra in eye appeal. I think if I was attempting to breed an animal for showing, I would not go past Heywood Esquire as a Sire. His heifers seemed to carry the size and weight expected of the females in U.K., with real style and still retain a femininity that was so often found lacking.



*'Heywood Esquire' at the Stirling Stud.*

**5th July.** The Royal Agricultural Show was opened with a Breed Spectacular of the Simmental Classes. On the first day, Simmentals had exclusive use of the main ring and certainly secured the public's attention as well as frequent visits during the day by many important dignitaries. The judging was done by F. J. Young and R. A. McBride, both well known internationally in the Simmental World. The Senior Champion Bull was awarded to Stuartslaw Joseph by Glenturk Grenadier — a worthy prizewinner. It was rather alarming how-



*'Stuartslaw Joseph', Senior Champion Bull at The British Royal. A number of 'Stuartslaw' females have been imported to N.Z.*



# Simmental World Congress 1982

ever to see 2nd prize awarded to a bull with an overgrown hoof, which was almost too lame to make a circuit of the ring. The Champion Cow looked the part in the show ring, but failed to attract much attention at the Sale, owing to a dubious breeding record.

A banquet that night, with music by the famous Joe Loss Band provided a fitting finale to a memorable occasion.



*Jim Houlbrooke is honoured by being asked to present the sashes for the Junior Cow class at The British Royal.*

In retrospect, a few impressions gained from my travels in U.K. and later through Europe – the colossal size of many of the top bred cows (4th prize cow at the Royal weighed 1,005 kg). Admittedly some looked overdone and coarse, but I do wonder if generally in New Zealand we are feeding our Simmentals sufficiently to take advantage of their high growth and weight potential.

In a survey of commercial beef producers in U.K. to establish the most important areas for improvement in Simmental breed, polling was put second, only to conformation and above ease of calving. In discussion with breeders from many countries, I found a keen interest in achieving a polled status in their herds, providing of course it was not done at the expense of quality. The German, Swiss and British Societies are co-operating in building up herds of polled Simmentals from purebred mutations.

Delegates from many countries were concerned at the poor mobility seen in so many of the bulls put on display. The British, so thorough in most things, seem to be neglecting this important point, presumably because their cattle have very little walking to do, in comparison to more extensive farming systems in other countries. A case in point is their persistence in the use of Prinz after most have seen fit to ban him for his strongly hereditary faults in both legs and jaws. His stock will not be registered after 1.1.83, but how much damage has been done by then!

Finally, after seeing where the Simmental breed originated in Switzerland and Austria, on mountain pastures up to 6,000 feet, I can treat with glee, claims we still hear the Simmentals will not handle the steep hills of New Zealand.

## PENDEEN

### HORORATA

***Does it again at the  
1982 Royal Show***

- ★ 'Pendeen Marigold'  
Reserve Champion Junior  
Heifer . . .
- ★ 'Pendeen Magnus Pike'  
Reserve Champion Junior  
Bull . . .

**Winner of the Coopental  
Performance Class.**

***A Choice Selection of  
Young Stock Available  
This Season***

MRS J. C. HALL, PENDEEN, HORORATA  
PHONE 873 HORORATA

## The Futures Market (Wool)

**The exciting concept of FUTURES  
TRADING is now a reality in new  
Zealand, following the spectacular  
development of Futures Markets in  
other parts of the world, notably  
Britain, America and Australia.  
As a primary producer of crossbred  
wool, New Zealand is the ideal  
location for dealing in the New Wool  
Futures Contract**

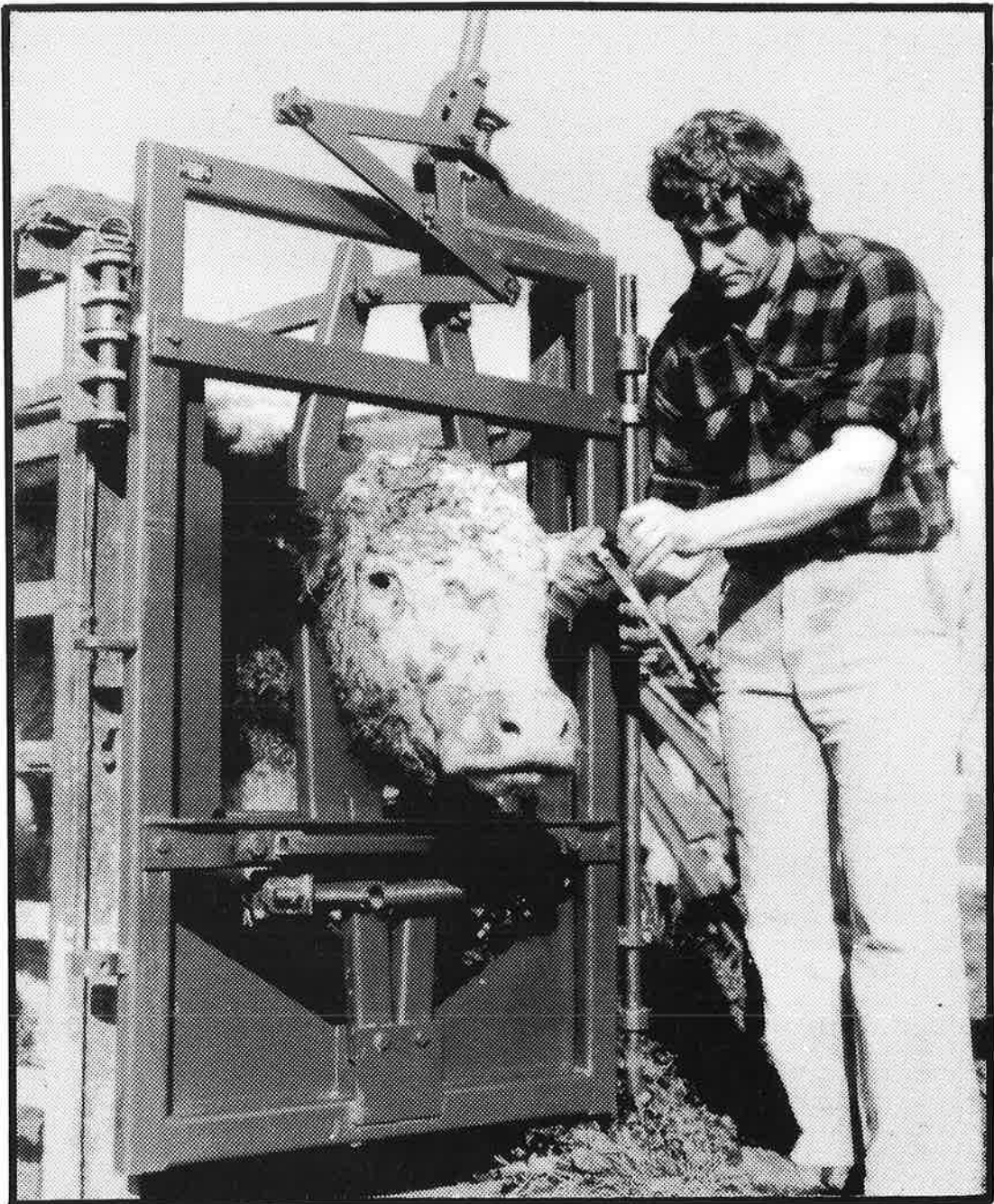
**For further information or investing in  
Futures fill in the coupon and post to:**

**H. R. LOWRY,  
P.O. BOX 2396  
STORTFORD LODGE  
HASTINGS**

**Associate Member of London-N.Z. Futures Association**

**Name:** .....

**Address:** .....



# **EASYBAIL**

## **the automatic cattle head bail**

- **Makes cattle handling a one man job — the beast catches itself.**
- **Animal safety — eliminates possibility of the beast choking down.**
- **Operator safety — no protruding arms or levers.**
- **Shaped yoke completely immobilizes the head.**
- **Strong and quick enough to catch the fastest beast.**
- **Quickly and completely adjustable to suit all classes of cattle.**

**Easybail Enterprises Ltd P.O. Box 111 RANFURLY**

**Please send me a folder and price details of your Easybail.**

**NAME** \_\_\_\_\_

**ADDRESS** \_\_\_\_\_

## GISBORNE SHOW 1982 (Poverty Bay)

Three exhibitors went through to Gisborne for the annual Poverty Bay Show. Their annual appearance at this Show is a good example of promotion and as a result of their patronage of this event there are an ever increasing number of Simmental bulls going into the Gisborne area.

Not only do they put Simmentals before the public in the show ring but participate in the inter-breed competition and in the past two shows have won the Meat & Wool Cup — they are to be warmly congratulated.

Ring results were as follows:

### **Bull (over 3 years)**

1st — 'LJB Jade' J. P. Absolom

2nd — 'Pukekohu Marquis' Arahi Farm

Champion Bull — 'LJB Jade'

Reserve Champion Bull — 'Pukekohu Marquis'

### **Heifer (2 years)**

1st — 'Pukekohu Simmentals' H. R. Lowry

2nd — J. P. Absolom

3rd — 'Pukekohu Simmentals'

Champion Female — 'Pukekohu Simmentals'

Reserve Champion Female — J. P. Absolom

Supreme of Breed and Meat & Wool Cup Winner — 'LJB Jade' J. P. Absolom

## HAWKES BAY SHOW 1982

An excellent line-up of cattle went before the judge, Mr Neil Barnett. John Absolom's bull 'LJB Jade' was again Supreme Champion and went on to win the 'Meat & Wool' Cup for the second year in a row. John also went on to win the I.C.I. inter-breed yearling class against strong competition with Glen Anthony's heifer second.

A feature of the Simmental showing was the Thompson family's achievement in bringing 15 animals to the show, all a credit to the Breed, and to their owners.

Mention must also be made of John Absolom's feat in winning his fifth 'Meat & Wool' Cup, an outstanding achievement.

Simmental Class results were as follows:

### **Cow & Calf (over 3 years)**

1st — 'Glenturk Anna', sire Scottish Neff, A. H. Thompson

### **Cow & Calf (3 years)**

1st — 'Peastons Kate', sire Ravensworth Effigy, A. H. Thompson

### **Heifer (2 years)**

1st — 'Glen Anthony Lorna', sire Scottish Senator, A. H. Thompson

2nd — 'Glen Anthony Limelight', sire Scottish Senator, A. H. Thompson

3rd — 'Rissington Lilly', sire Siegfried, J. P. Absolom

### **Heifer (Yearling)**

1st — 'Sherwood Marlene', sire Bavarian S.V., A. H. Thompson

2nd — 'Glen Anthony Marigold', sire Julius, A. H. Thompson

3rd — 'Rissington Monique', sire Salz, J. P. Absolom

### **Pair of Heifers**

1st — A. H. Thompson (Glen Anthony)

2nd — J. P. Absolom

### **Bull (Over 3 years)**

1st — 'LJB Jade', sire Balig Agent, J. P. Absolom

### **Bull (2 years)**

1st — 'Pukekohu Marquis', sire Bavarian S.V., Arahi Farm

2nd — 'Glen Anthony Lustre', sire Avoncroft Aster, A. H. Thompson

### **Bull (yearling)**

1st — 'Rissington Monitor', sire Polled SBL 63K, J. P. Absolom

2nd — 'Rissington Michael', sire LJB Jade, J. P. Absolom

3rd — 'Glen Anthony Mogul', sire Glen Anthony Jupiter, A. H. Thompson

### **Bull/Heifer (Pair)**

1st — J. P. Absolom

2nd — A. H. Thompson

### **Bull and Three Females**

1st — A. H. Thompson

2nd — J. P. Absolom

### **Sire Progeny (3 animals by same Sire)**

A. H. Thompson

### **Performance Class**

**Bulls:** 1st & 2nd — J. P. Absolom; 3rd — A. H. Thompson

**Heifers:** 1st, 2nd & 3rd — A. H. Thompson

### **Championships:**

Champion Cow — 'Glenturk Anna', A. H. Thompson

Reserve Champion Cow — 'Glenturk Anna', A. H. Thompson

Junior Champion Heifer — 'Sherwood Marlene', A. H. Thompson

Reserve Junior Champion Heifer — 'Glen Anthony Marigold', A. H. Thompson

Champion Bull — 'LJB Jade', J. P. Absolom

Reserve Champion Bull — 'Pukekohu Marquis', Arahi Farm

Junior Champion Bull — 'Rissington Monitor', J. P. Absolom

Reserve Champion Bull — 'Rissington Michael', J. P. Absolom

Supreme of Breed — 'LJB Jade', J. P. Absolom.

**TATTOO YEAR  
LETTER ...  
1982 = N**

# Royal Show

## 1982 ROYAL SHOW (Christchurch)

Five years ago Simmental cattle were shown competitively for the first time at the 1977 Royal Show – held in Christchurch. On that occasion seventeen entries came forward. Since that event the breed has been shown in increasing numbers at major shows throughout the country.

The 1982 Royal was well supported and breeders from as far south as Mossburn brought cattle to the Show. Twenty-eight Simmentals entered the ring – several more were entered but for various reasons did not come forward on the day. The standard of cattle was extremely high and of credit to the exhibitors and the Breed, making an impressive line up in the cattle pavilion and also in the two grand parades.

The premier award of Supreme Champion of the Breed was taken by a new competitor, Rob Gibson, who travelled from Tarras in Central Otago; his entry an eight-year-old cow 'Drum Ermintrude' was an excellent example of the Breed as was her heifer calf at foot. The pair represented the Breed in the Meat & Wool Cup and were placed a very creditable fourth in strong competition. The 'Cup' was won by an Angus bull with a Hereford second and a South Devon third.

The 'Coopental' performance class was held for the third time at a Royal and attracted ten entries and was won by Mrs J. C. Hall, a well-known Canterbury breeder with her yearling bull 'Magnus Pike'. It is hoped at next year's Royal we may be able to encourage an inter-breed contest for this trophy.

As time progresses we are fortunate in gathering together quite an impressive collection of trophies. This year we have two new additions, the R. H. Kerr Challenge Salver, a Royal Show trophy, which is awarded to the Champion animal of the opposite sex to the Supreme Champion of the Breed. (If the Supreme is a bull, the R. H. Kerr trophy goes to the Champion cow etc.)

Merck, Sharp & Dohme marketers of agricultural and veterinary products, who have been most generous to us at past sales, this year have given us a very nice silver tray, which has been awarded to the Junior Champion Bull. This award will become a challenge trophy at the Canterbury Show (and the Royal, when it is in Christchurch). We are most grateful for the generous donation of these trophies and were delighted to be able to ask Mr Kerr and Mr Burke (of Merck, Sharp & Dohme), to present their awards on the day.

It is always pleasing to see new exhibitors and this year we welcomed Rob & Jan Gibson of Tarras, Ray Lott and his wife of Garston, near Queenstown and Gavin and Judy Marshall from Banks Peninsula. We also welcomed back Stan Crosson of the well-known Risingholme Stud, which is now domiciled in the South Canterbury area. Stan had a good show taking the premier bull prizes with a most impressive twenty month old bull by Bavarian S.V.

As usual at the Canterbury Showgrounds the local Club established a 'centre' for members and friends and this was well patronised throughout the Show and drew many favourable comments from visitors.

Exhibitors this year were:

D. S. Crosson, Risingholme, Gordons Valley, R.D.2, Timaru.

R. W. Gibson, Malvern Downs, Tarras, R.D.3, Cromwell.

R. G. Macdonald, Governors Bay, R.D.1, Lyttelton.

O. J. Osborne, Winfield, R.D.3, Christchurch.

D. C. & M. J. Carter, Allandale, R.D.1, Lyttelton.

R. N. S. Cox, The Levels, R.D.4, Timaru.

R. W. Lott, Garston.

C. J. Patterson, Lakeside, R.D.3, Christchurch.

Mrs J. C. Hall, Pendeen, R.D., Hororata.

G. J. & J. O. Marshall, Eastern Bays Road, Duvauchelles.

A. W. Duncan, Mossburn, R.D.2, Lumsden.

The Breed Judge was Mr John Absolom of Rissington, Napier.

A summary of class results is as follows:

**Class 473:** Cow & Calf (Over 3 years)

1st – 'Drum Ermintrude', sire Bavarian S.V. – R. W. Gibson.

2nd – 'Irish Florence', sire Panther – O. J. Osborne.

3rd – 'Arwood Freda', sire Hamlet – O. J. Osborne.

**Class 474:** Cow & Calf (3 years)

1st – 'Avon Park Kahlua', sire Sir Avon Park Extra – D. C. & M. J. Carter.

**Class 475:** Heifer (2 years)

1st – 'Winfield Libby', sire Winfield Goliath – O. J. Osborne.

**Class 476:** Senior Yearling Heifer

1st – 'Pendeen Marigold', sire Pendeen Grenadier – Mrs J. C. Hall.

**Class 477:** Junior Yearling Heifer

1st – 'Springbrook Mandy', sire Siegfried – C. J. Patterson.

2nd – 'Sunnyvale Maxine', sire Bavarian Knight – R. W. Lott.

3rd – 'Avon Park Nyngau', sire Sir Avon Park Extra – D. C. & M. J. Carter.

4th – 'Sunnyvale Melanie', sire Polled SBL 63K – R. W. Lott.

**Class 478:** Pair of Yearling Heifers

'Sunnyvale Maxine', 'Sunnyvale Melanie'. – R. W. Lott.

**Class 480:** Bull (3 years) (Note: no entry for Bull over 3 years)

1st – 'Winfield Knight', sire Winfield Goliath – O. J. Osborne.

**Class 481:** Bull (2 years)

1st – 'Risingholme Brigadoon II', sire Bavarian S.V. – D. S. Crosson.

2nd – 'Winfield Littlewood', sire Winfield JaJay – O. J. Osborne.

**Class 482:** Senior Yearling Bull

1st – 'Winfield Majestic', sire SBL Marzou – O. J. Osborne.

# Royal Show

## **Class 483:** Junior Yearling Bull

- 1st — 'Levels Monarch', sire Scottish Extra Special — R. N. S. Cox.  
2nd — 'Pendeen Magnus Pike', sire Pendeen Conrad — Mrs J. C. Hall.  
3rd — 'Levels Morley', sire B. T. Jolt — R. N. S. Cox.  
4th — 'Centre Burn Matai', sire MMB Berg — A. W. Duncan.  
5th — 'Centre Burn Minus', sire TRN Mr Pari — A. W. Duncan.  
6th — 'Avon Park Manuka', sire Sir Avon Park Extra — D. C. & M. J. Carter.

## **Class 484:** Group (Bull and Three females)

O. J. Osborne.

## **Class 485:** Sire Progeny (Three animals by one sire)

D. C. & M. J. Carter.

## **CHAMPIONSHIPS/TROPHIES**

Senior Champion Cow — 'Drum Ermintrude', R. W. Gibson.

Pendeen Challenge Trophy — 'Drum Ermintrude', R. W. Gibson.

Reserve Senior Champion Cow — 'Winfield Libby', O. J. Osborne.

Junior Champion Heifer — 'Springbrook Mandy', C. J. Patterson.

Reserve Junior Champion Heifer — 'Pendeen Mari-gold', Mrs J. C. Hall.

Senior Champion Bull — 'Risingholme Brigadoon II', D. S. Crosson.

Harlau Challenge Trophy — 'Risingholme Brigadoon II', D. S. Crosson.

Reserve Senior Champion Bull — 'Winfield Knight', O. J. Osborne.

Junior Champion Bull — 'Levels Monarch', R. N. S. Cox.

Merck, Sharp & Dohme Challenge Tray — 'Levels Monarch', R. N. S. Cox.

Reserve Junior Champion Bull — 'Pendeen Magnus Pike', Mrs J. C. Hall.

Supreme Champion Simmental — 'Drum Ermintrude', R. W. Gibson.

Simmental Society Silver Challenge Salver — 'Drum Ermintrude', R. W. Gibson.

Reserve to Supreme Champion — 'Risingholme Brigadoon II', D. S. Crosson.

R. H. Kerr Challenge Salver — 'Risingholme Brigadoon II', D. S. Crosson.

Coopental Challenge Trophy — 'Pendeen Magnus Pike', Mrs J. C. Hall. (Performance Class).

Herdsmen Award — Mrs M. J. Carter, Allandale.

## **FOUND — AFTER ROYAL SHOW**

- 1 large heavy plastic parka (farm type)
  - 1 light, dark grey raincoat (synthetic unlined, roll-up variety)
  - 1 child's pale blue jersey (synthetic)
  - 2 heavy plastic mugs, one orange, one yellow
  - 4 white fluted saucers
- These items may be claimed from the office.

## **'PUKEKOHU' SIMMENTALS**

**The Pukekohu herd is now farmed at Arahi, Putere — 70km north of Napier in partnership with Robert Wallace.**

**The policy of breeding for performance and soundness will be maintained. The herd size will be increased to 100 cows for greater selection for the productivity traits of growth rate and fertility**

**R. G. Wallace  
'Arahi'  
Raupunga  
Hawkes Bay**

**H. R. Lowry  
'Pukekohu'  
P.O. Box 2369  
Hastings**





*Rob Gibson with Grand Champion Female, 'Drum Ermintrude' who also won the Pendeen Challenge Trophy. With him is Mrs Jocelyn Hall donor of the Trophy & Royal Show judge John Absolom.*



*Colin Patterson with his Champion Heifer, 'Springbrook Mandy'.*

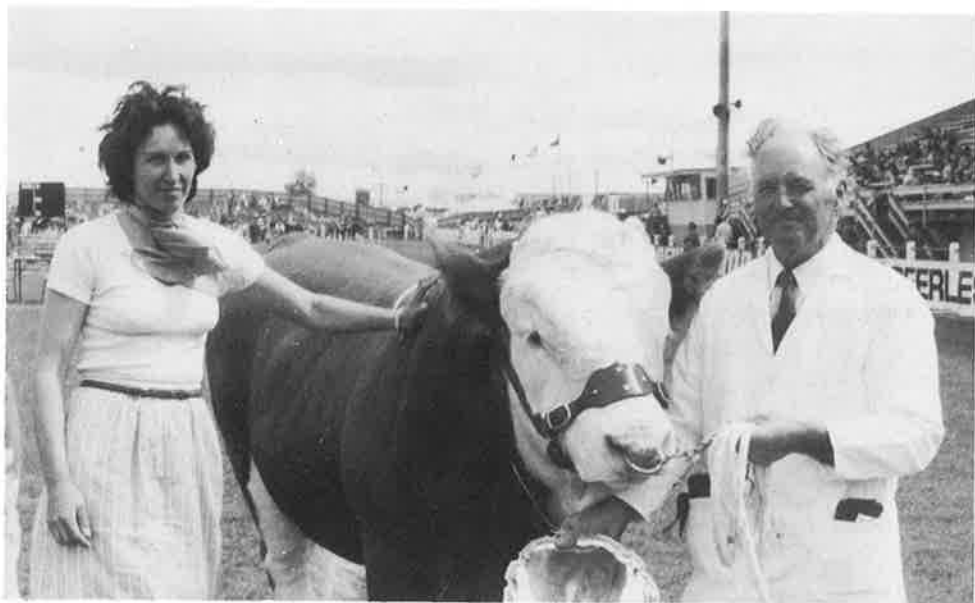


*New Exhibitor, Judy Marshall of Banks Peninsular in the judging ring.*



*Supreme Champion Simmental 'Drum Ermintrude' flanked by L-R, Challenge Salver, Rob Gibson and his wife Jan.*

19  
ROY  
SHO



*A Proud Stan Crosson holds his Champion Bull 'Risingholme Brigadoon II', with them is Star Absolom who presented the R. H. Kerr Trophy awarded for The Reserve Supreme Champion.*



*Mike Burk of Merk, Sharp & Dohme presents his company's Challenge Tray to Rod Cox winner of the Junior Bull Class & Junior Championship. With them is George Habberjam who led the winning entry.*



*Star Absolom (Judge) & Star Absolom, who presented the Society*



*Pam & Allister Duncan from Mossburn with their entries in the Junior Bull Class. The Duncans have more recently won The Meat & Wool Cup at the Gore Show – a very worth-while achievement in Southland.*

32  
KAL  
DW

# Food For Thought...

Performance animals and specialised stock demand a high vitamin and mineral diet. Severe deficiencies of the essential vitamins and minerals soon appear with obvious symptoms. However, sub-optimal levels may show no visible signs apart from general slow growth, poor performance and often greater susceptibility to disease.

Animals are born with little or no reserves of the fat soluble vitamins A, D and E, and depend totally on the intake of colostrum, supplied by the mother during the first few days immediately following birth. The concentration of these vitamins within the colostrum is directly related to the mother's diet during pregnancy. A deficiency in the intake of carotene, due to poor quality forage or grazing under drought conditions will result in insufficient Vitamin A being passed on to the new born animal through the colostrum. Young animals deficient in Vitamin A are far more susceptible to scours, colds and pneumonia. Correct vitamin status within the animal reduces the incidence of these often costly problems.

Vitamin D is closely involved with the absorption of calcium from the intestine and also assists its movement around the body, aiding the formation and growth of the bones.

Similarly, the trace elements, iron, magnesium, cobalt, copper, iodine, manganese and zinc are all, in various degrees, involved in the metabolic functions within the animal.

Iron and copper help reduce the incidence of anaemia by aiding the synthesis of the haemoglobin pigment in the blood. Manganese and zinc ensure good bone structure, hoof formation and assist the prevention of skin disorders. Cobalt is of particular importance, as the natural synthesis of Vitamin B12 is dependent upon a dietary source of cobalt. Deficiency of Vitamin B12 is well known in sheep and cattle and is often referred to as rough coat and emaciation.

Whilst natural forage and grazing under sunlight conditions will meet most of the animals requirements, adverse conditions of weather, poor quality feed, and also during and after birth, vitamin requirements increase dramatically.

Supermix have developed a complete range of highly palatable, easily digested stockfoods to meet and better these requirements.

Supermix stockfoods are a totally balanced food, high in carbohydrates and protein and containing all the essential vitamins and minerals for natural healthy growth.

Supermix stockfoods are protected with a proven antimicrobial-antifungal food preservative to inhibit the proliferation of:—

1. Salmonella and other endotoxin-producing bacteria.
2. Mould-producing aflatoxin and fungal mycotoxins.
3. Fermentation producing micro-organisms such as yeast etc.

Supermix stockfoods are coated with naturally sweet liquid molasses

**"STOCK JUST LOVE IT."**



**SUPERMIX CALF GROWER FEED — SUPERMIX DAIRY FEED  
AVAILABLE FROM ALL LEADING  
STOCK FOOD RETAILERS.**

MANUFACTURED BY D. H. DICKIE & CO. LTD. MARTON

## BULLS SELL WELL AT OWAKA

Southland breeders did well at the Owaka saleyards south of Balclutha recently selling six bulls at an average of \$1,250; 2 Pures at \$2,100 and \$1,600; 2 three-quarter bred at \$1,000 and \$900; 1 seven-eighth bred at \$1,000 and 1 halfbred at \$825.

Good prices at any sale and exceptional on a local market.

## SIMMENTAL SALE AT CAMBRIDGE

On the 5th November, J. J. Butler (Jerry), who is well-known in the Waikato and elsewhere where Simmentals are involved, held a sale of his cattle on his property at Cambridge. Jerry is reducing his involvement in farming and plans to dispose of most of his farm. The offering composed of a total of 52 animals ranging from several older imported purebred females, yearling purebred heifers and bulls, in-calf (and calf at foot), seven-eighth cows and heifers. The sale was considered a sound one with only two seven-eighth heifers not being sold and one withdrawal. The average for the 49 Lots sold was \$921. A summary of averages for the various groups is as follows:

|                                          |                           |
|------------------------------------------|---------------------------|
| 8 Imported Pure Cows (7 to 10 years old) | av. \$896 (top \$1,250)   |
| 1 Pure Cow                               | \$700                     |
| 8 Pure Heifers                           | av. \$1,275 (top \$2,400) |
| 9 seven-eighth cows                      | av. \$936 (top \$1,325)   |
| 6 seven-eighth heifers                   | av. \$757 (top \$900)     |
| 8 Pure (yearling) heifers                | av. \$1,025 (top \$2,850) |
| 8 Pure bulls (yearling)                  | av. \$730 (top \$2,350)   |
| 1 Pure bull calf                         | \$325                     |

## WAIKATO SHOW 1982

A relatively small entry of Simmentals competed at the Waikato Annual Show on 31st October, but with very satisfactory results.

Exhibitors this year were Noel Buchanan (Morrinsville), Ray Nicholas (Taranaki), Geoff and Marion Mathis (Tirau), Neil Barnett (Arohena) and Ken Robb (Raetahi). The latter two exhibitors both competed for the first time.

'Line Honours' went to Neil Barnett with his 'Herman' two year old bull who took not only Supreme Breed Champion but third equal in the Meat & Wool Cup with a Limousin.

Class results were:

### Senior Cow

'Sundowner Ranches Karen' by Acajou, N. C. Buchanan.

### Heifer (2 year)

'Mossy Tulip' by Primann, R. G. Nicholas.  
Championship R. G. Nicholas. Reserve N. C. Buchanan.

### Heifer

1st - 'Ashley Margo' by Argos, N. C. Buchanan.  
2nd - 'Marfrey Melissa' by Argos, G & M. Mathis.  
Championship N. C. Buchanan Reserve G. & M. Mathis.

### Grand Champion Female

'Mossy Tulip', R. G. Nicholas.

### Reserve Grand Champion Female

'Ashley Margo', N. C. Buchanan.

### Bull (2 year)

1st - 'Lopez' by Herman, N. J. Barnett.  
2nd - 'Blue Ridge Matangi' by Scottish Marquis, K. Robb.  
Championship and Reserve in same order.

### Junior Bull

1st - 'Ashley Mar-Zou II' by Mar-Zou, N. C. Buchanan.  
2nd - 'Marfrey Mars' by Mar-Zou, G. & M. Mathis.  
Championship and Reserve in same order.

### Grand Champion Bull

'Lopez', N. J. Barnett.

### Reserve Grand Champion Bull

'Ashley Mar-Zou II', N. C. Buchanan.

### Breed Supreme Champion

'Lopez', N. J. Barnett.

### Pair Yearlings (Bull & Heifer)

1st - N. C. Buchanan.  
2nd - G. & M. Mathis.  
Performance Class - R.G. Nicholas.

### All Breeds Classes

#### Yearling Heifer (15 entries)

2nd - 'Ashley Margo', N. C. Buchanan.

#### Yearling Bull (22 entries)

2nd - 'Ashley Mar-Zou', N. C. Buchanan.

#### Producer Meats Bull & Heifer (14 entries)

3rd - N. C. Buchanan.

#### All Breeds Cow (12 entries)

1st - 'Sundowner Ranches Karen', N. C. Buchanan.

#### Two Year Heifer (10 entries)

2nd - 'Mossy Tulip' - R. G. Nicholas.

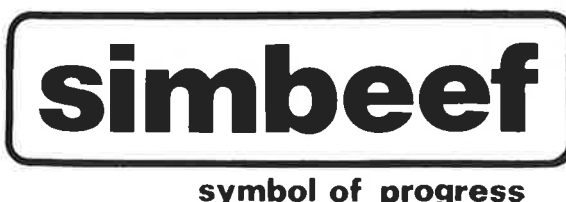
#### Meat & Wool Cup

3rd - 'Lopez', N. J. Barnett.

#### Founders Cup (Bull & Three Females)

Simmentals 2nd

Exhibitors must be congratulated for their excellent results in the All Breeds classes.



symbol of progress

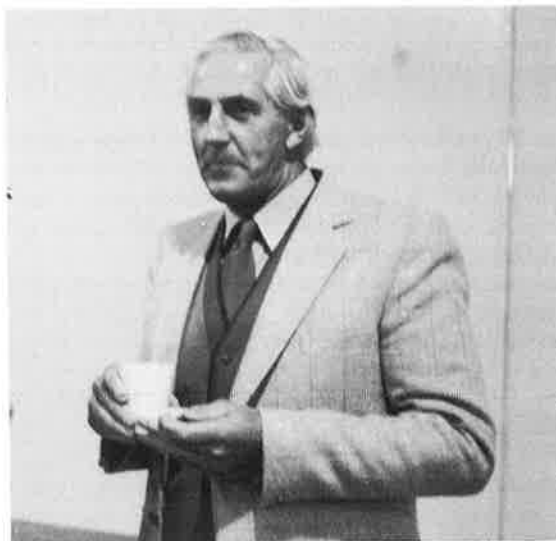
## SIMMENTALS SELL SOUNDLY AT 1982 SOCIETY SPONSORED SALES

On what is well known to be a tough current market situation in the beef cattle industry Simmentals sold well at both Christchurch and Palmerston North in June.

The South Island Sale held at the Canterbury A. & P. Showgrounds, Christchurch on Thursday 17th June resulted in a total clearance of the catalogue offered with prices at what was considered to be realistic levels. The overall presentation of the offering was pleasingly high with few animals not fully up to standard. Top animals sold strongly and following last years Sale pattern there was buying strength from the commercial sector with a good balance of bulls going into the cross-breeding situation. Top price for bulls was \$4,200 for a twenty two month old of exceptional standard offered by well known Southland breeder W. A. Rouse of Five Rivers. This animal was purchased by Mr J. Canavan of Victoria, Australia. The second top price was \$4,000 paid for an entry from the Levels Stud at Timaru by Guthrey Holdings Ltd of Amberley. Three bulls sold for between \$3,000-\$4,000, twelve between \$2,000-\$3,000 and fourteen between \$1,000-\$2,000 giving an average of just over \$2,000 per animal, which was slightly ahead of last years Sale at the same venue. In the female section, only six animals were offered. The Levels Stud sold three with a top price of \$2,000 for a quality heifer, which was purchased by W. Almond of N.S.W., Australia. Two other Levels heifers sold for \$1,300 and \$1,400. The remaining three heifers were not well presented and sold accordingly, resulting in an average price of \$1,083.

The Sale, which was attended by approximately 400 people had a bouyant atmosphere and bidding was strong throughout the Sale.

The National Sale held at the Palmerston North Showgrounds again presented a good group of animals with a slightly smaller catalogue. Of the twenty seven



*Ron Thomas of Opiki near Palmerston North at the National Sale.*

bulls offered, twenty three sold with a top price of \$7,000 for a young stud bull of sixteen months, which went to Aratu Station of Wairoa. This entry was put forward by Mr & Mrs H. R. Lowry of Havelock North. Second top price was \$3,500 for a very good twenty two month old bull offered by J. & P. Scott of Cambridge, which was purchased by H. R. Lowry, vendor of the top animal. Another young bull offered by A. P. Rolley of Cambridge made \$3,000. Five bulls made over \$2,000. Fifteen sold between \$1,100 and \$2,000. The average price for bulls was \$2,077.

In the female section five purebreds were offered and one in-calf seven-eighths heifer. Top priced heifer (polled), was \$3,000 sold by J. MacLachlan of Papakura to Mr R. Thomas, Opiki. One other purebred sold at \$2,200 to J. M. Russell of Ohingaiti. This animal was entered by G. G. Pearce of Putaruru who also sold the seven-eighths heifer for \$750.

The Sale was sound, although it lacked the spirit that prevailed at the South Island Sale and auctioneers worked hard for their bids. In the bull section, a number of bulls sold at what might be considered under valuation.

Generally though, in the light of the current beef and economic situation both Sales were considered satisfactory and illustrated the strength of the Simmental Breed which has been strongly reflected in the price of commercial weaners and steers offered at major saleyards throughout the country this season.

## WAIKATO CLUB SALE

Following the National Sale on the 25th June the Waikato Club held a district Sale at Cambridge offering thirteen females and some thirty bulls. This proved to be a disappointing event with a considerable number of passings. Cattle were generally of reasonable standard with several top quality entries. The effect of a large Dispersal Sale in the area in April and two major Sales immediately preceeding doubtless had influence on the amount of buying power available.

Females averaged \$1,084 and Bulls \$936.



*'A matter of discussion' Jerry Butler, Rod Cox & Jim Sutton at the National.*



# Annual Meeting

## THE ANNUAL GENERAL MEETING

The eleventh Annual Meeting of the Society was held at the Fitzherbert Motor Inn on the evening, Monday 21st June and was attended by fifty-eight people and some twenty apologies were recorded. Mr Cox, President of the Society in welcoming members made special mention of Mr Werner Gut who had stood down as Councillor after six years, during which time he had contributed strongly to the dairying aspect of the Breed, both at the Council Meetings and throughout the dairying areas of the country. His continued offer of assistance was greatly appreciated. Mr Cox also welcomed Mr Alan Perry to the Council as a new member and hoped that he would find the experience rewarding and enjoyable. He also thanked Mr Neville Reynolds for putting his name forward for Council in the elections.

The Meeting dealt mainly with routine matters and points of note were as follows:

**Promotion of Beef** as a consumer product. This had been discussed at Council Meetings and a concentrated move is to be made to encourage the New Zealand Meat Producers Board to promote beef as other consumer products. Such action would be encouraged in all Breed Societies by a combined Meeting.

**New Zealand Fieldays** (Mystery Creek). Some discussion was held on the 'pros and cons' of participation in this event. It was felt by a number of people that the 'commercial' aspect of this event was becoming predominant and that the livestock involvement was tailing off. The Waikato Club had done a great deal of Fieldays with tremendous success but the cost was becoming extremely high. In the interim no major participation would be taken but the Fieldays would be reviewed in the light of what was happening with other breeding groups. Funding of this event had been from Society reserves rather than Club funds.

**Sales Date.** It was asked if Sales dates would continue on a fixed schedule each year? The answer was 'yes' as there were only a limited number of days available in an already busy calendar and it was of necessity that the Breed should market at the traditional selling time. Dates were arranged in conjunction with the Stock and Station Agents Association.

**Registration Fees** (Halfbreds). It was suggested that the fee for halfbred cattle be reduced to encourage continuation of the grading-up system. As a result of this suggestion fees for these cattle and three-quarter breds have been reduced and members have already been informed.

Chairmen of Council Committees presented their annual reports and these are reproduced in this issue.

## REPORT OF THE FINANCE COMMITTEE 1982

My report at the end of 1980/81 strongly indicated to members that where our overall financial position was still strong the Income and Expenditure accounts were proving most difficult to deal with.

You will have seen by the 1981/82 accounts circulated to you that we have been able to bring the Society back to a very satisfactory position. The Schedule of Expenditure shows that it has increased by approximately \$10,000, which has been mainly the increase in wages, which is something we have very little control over unless we are prepared to drop the service to our members. We hope that a slackening of hours in the office with the computer becoming more functional may see at least a holding of the wages. We have been able to control our operating charges to slightly less than last year.

The Publicity, Promotion and Grants to Clubs section of the accounts shows to be up, this has been caused by a donation made to the Canterbury A. & P. Association which will be recovered from vendors using the new selling facilities at the Showgrounds. We have been able to control the expenditure reasonably.

The Income side shows a huge leap which derives from increased returns from all our Income avenues. This is most heartening and shows the activity that is going on within the Breed. A certain amount of this increase does come from increased fees which came into effect on 1st September, 1981. We have also been able to collect some registrations that had fallen behind the year before, but overall it has been the greater activity among our Breeders.

You will notice we have improved our income from our investments, which has been caused by investing in higher interest bearing term deposits and the readjusting of our share portfolio. This on the surface has been good, but you will see that most of that advantage has been eaten up by taxation. This aspect is concerning us and we have been looking into the tax situation with the Inland Revenue Department. It seems ridiculous that this is happening, when Herd Improvement organisations do not pay tax. Our Accountant, Mr Grahaeme Mars is still trying to obtain results on this subject.

It is pleasing to see that we ended up with \$19,972.52 income and \$81,639.46 expenditure, leaving before taxation a profit of \$10,333.06, which compared with a \$12,512.00 loss last year shows that we can now recover some of the capital that was being eroded in the last two years.

The Balance Sheet once again starts to look very healthy, giving I am sure, great security for our Members, Staff and the future of the Breed. Your Council has always been very conscious that we must retain this security for our future.

There is one nasty note in my report and this is the continual trouble we have with bad debts. I mentioned this last year hoping we would have some improvement. Unfortunately, we still have had hard core debts (some up to 18 months), so we had to reluctantly deregister cattle. We do ask that accounts are paid promptly or those having difficulties please inform the Secretary or President.

The Society is about to sign the Contract, which will bind the Meat Board and ourselves to running an efficient computer system. Mr Sutton will inform you of the details in his report. The cost so far, which we will be paying to the Meat Board, is \$15,000, which will come from the reserve we have had invested over many years. This covers three years of cow inputs fed

# Annual Meeting

into and processed by the computer. Future costs per cow are known and are being finalised by the Council. You will be informed in the near future the results of our deliberations.

I must thank Mr Grahaeme Mars, our new Accountant for the help he has given us since taking over last year. His ability to help in all aspects of investments and accountancy has been most refreshing. Our Staff, who do most of the book work, have been most efficient in their preparation of the books and highly praised by Mr Mars.

I thank my Committee for the support they have given me over the year, this includes Mr R. H. Kerr who was co-opted again for another term.

We have had a good year. We must be aware that to remain a strong Society we must make sure we remain a financially secure organisation. I am sure every other Breed Society, sheep or cattle in New Zealand would like to be in our position.

I move the adoption of this report and the 1981/82 Annual Statement of Accounts.

R. N. S. Cox,  
Chairman, Finance Committee

## REPORT OF THE PROMOTION COMMITTEE 1982

It gives me much pleasure to report on the activities and performance of the Breed over the past year.

I do feel that we have had a most successful year all round. Simmentals are now thoroughly accepted as a performance Breed in the market place, and in a declining cow situation, our share of the bull market is rising.

The highlight of the year really was Star and John Absolom's winning of the three Meat and Wool Cups culminating in the Royal Show here at Palmerston North with their magnificent bull LJB Jade. Their fine effort made the Promotion Committee's job much easier. Even with a T.V. hiccup the immense publicity that is derived cannot be costed. I congratulate them both. To other breeders who spend the time and effort in showing I commend most highly because it is certainly not a cheap exercise, but it does keep the Breed in front of the public.

Simbeef weaner sales around the country have been tremendously successful. Pens of Simmental Cross weaners have been top price getters at most centres. This I feel is the major reason for the increasing demand for bulls as farmers are now seeing that if their weaner production is to match anywhere near their sheep returns, then they have to cross with Simmental. Also very good results in the ox competition are a major boost to publicity for the Breed. However, the South Island breeders must have representation in the Methven weight gain trial. This is a most prestigious event.

The club scene is very healthy too. Ian Johnstone has visited most of the North Island and was delighted with what he saw. I was very sad not to be able to go with him. We have this year, 60 new members, well and truly reversing the trend of recent years. Also we have many new Simbeef members. It is a good thought

that whenever you sell a bull, pay the first year's subscription yourself to Simbeef. Use of a Simbeef tag guarantees a premium price.

If you look at promotion expenditure for the year, we were well within the budgeted figure. I was warned that if we went over, my head would roll! The cost of the Simbeef Pamphlets has almost been covered and I do recommend the use of these in your districts. There are many ways of distributing them without feeling they are a waste.

For this year I see the main thrust of our promotion going into efficient economic beef production. All breeders must get together to promote beef production. All breeders must get together to promote beef to the consumer. We are in fact being headed off by the pork producers, dairy board and chicken growers for a share of meat consumption in this country and it isn't good enough. We have already written to the Meat Board on this matter and had a very negative reply and so I asked Mr Jefferies to be here on Wednesday, so let's give him the message. We now pay levies on meat killed for local consumption so why can't those funds be used to promote red meat consumption?

Our Junior membership is thriving and to Sandra McLean who looks after this area go my thanks for a job well done.

I thank the Promotion Committee for their contribution over the year and in fact, all Councillors for the work they have done, particularly in their own areas. It is quite the best committee of people I have worked with and it is great to be with enthusiastic people.

Paddy and Yvonne in the office I thank most sincerely for their kindness and friendliness to all breeders. I single out Ann for special thanks for those things, plus her patience and tolerance.

And to Ian my very grateful thanks for a job very well done. I can't imagine a worse job frankly, dealing with farmers, having to publish a magazine three times a year, which is superbly done, but I would think nervous breakdown material in the extreme. The magazine provides communication between the Society and its Members and Ian does a tremendous job putting it together. We would, however, like to see more breeders advertising in it. Ian is friendly at all times and a superb selector of girls. A good all rounder would you say! To Ian's wife, Gail, my thanks for her hospitality to me and her often unseen contributions to the Society's work.

I now formally move the adoption of this report.  
H. R. Lowry  
Chairman

## REPORT OF THE TECHNICAL COMMITTEE 1982

The time of the Technical Committee has been overwhelmingly devoted to the introduction of computerised pedigree recording.

This time last year we were in real trouble, the abrupt defection of the Angus Association having thrown into disarray the planned pedigree/performance recording scheme into which we, along with many others, had put so much work.

# Annual Meeting

Now, after extensive liaison, we are at the point of signing a contract between ourselves and the N.Z. Meat Producers' Board for the provision of computerised pedigree recording facilities. While, strictly speaking, this is not a combined performance/pedigree programme, it will allow breeders to input birth and weaning data for the Beefplan performance recording scheme on the same stationery and at the same time as they supply pedigree and registration details for the Society. Thus the stage will be set for the expansion of performance recording which is so vital for the future of Simmental, and the eventual inclusion of credible performance data with genetic significance with our pedigree records.

We like to describe ourselves as 'the performance Breed', but this description may be wearing rather thin, and the day cannot be far away when we require members to shape up or ship out, in respect of performance recording.

While the Council has grappled with the theory, our loyal staff, particularly Ian Johnstone, Ann Booth and Yvonne Kingsland, have been faced with the processing of three years records, on an unfamiliar programme still under development. That they have retained their composure and made the remarkable headway they have, is something I salute, and for which members have cause to be grateful.

The Sire Reference scheme has taken something of a back seat. It was a matter of great satisfaction that analysis of data up to weaning for the first round of matings identified a bull of sufficient breeding merit to rank alongside the elite of A.I. sires from overseas. He has been added to the list of Reference Sires. Unfortunately, no further results have since been published, but we hope this will be remedied in the near future.

The big problems with Sire Referencing, are the declining number of breeders able and willing to engage in an extensive A.I. programme, and the disgracefully small proportion of members belonging to Beefplan. Unless we get more participants, we will not be able to maintain an up to date panel of adequately evaluated Reference Sires, and the scheme will collapse and with it our dreams of becoming an internationally recognised source of superior performing Simmental for the beef industry.

If anybody knows of a five hundred cow, performance recording, breeding and fattening herd, which would be available for a planned A.I. programme, please let us know.

J. R. Sutton

Chairman, Technical Committee.

## REPORT OF THE SALES COMMITTEE 1982

Even with poor schedules and difficult climatic conditions throughout the country, Simmental cattle by virtue of their distinct advantages over other breeds have enjoyed excellent sales with market topping prices for all classes of commercial stock.

The 1981/82 Society sponsored sales both had good clearances with satisfactory prices, but there still appears to be insufficient numbers of top quality bulls for these sales. Many prospective purchasers were un-

able to fill their orders with the type of cattle they required. The non-sponsored sales throughout the country also enjoyed sound markets.

Whilst it was sad to see the Sherwood Herd dispersal, Roy Smith must be congratulated on his excellent sale of a large number of basically graded-up cattle — an example to all breeders. We wish Roy and his wife a happy retirement.

There is no doubt that the Simmental Breed is on a high in this country, with tremendous demand for both male and female cattle and never before has it been more important for vendors to offer only cattle of high quality and performance.

At last year's A.G.M. the selling order of our two Sponsored Sales came under discussion and the Committee, after much debate, resolved that the offering be classified into age groups. These to be balloted for catalogue order. Judging is to be discontinued and the two trophies presented to the highest priced male and female offered at the National Sale. Also, that the inspectors judge the animal most suited for export for the Pacific Freezing Works trophy.

It is with regret that we record the sad loss of Warren Morpeth, whose support for our Breed as Stud Stock Manager for Wrightson N.M.A. Ltd will always be appreciated.

I would like to thank my Sub-Committee and Society staff for their concerted efforts during the year, which were obviously rewarded with a very successful South Island Sale last week and high expectations for the National Sale tomorrow.

A thought that I would like to leave you with — we have watched conventional breeders open the door and nearly ruin themselves by overhandling and forced feeding of their cattle. Are we on the same road to self destruction?

J. D. Graham,

Chairman, Sales Committee

## SEMINAR FOLLOWING THE ANNUAL MEETING

On the morning after the Sale and Annual Dinner a 'Seminar' was held at the Palmerston North Civic Centre. This took the form of a presentation of four prepared addresses by leading New Zealand Speakers on 'Which Way New Zealand Agriculture'. Speakers were Professor H. Morton of Otago University, Mr Len Bayliss, Consultant of Wellington, Mr Brian Jeffries of New Zealand Meat Board and Mr A. Betts of the N.Z. Dairy Board. The topics presented by these Speakers relative to their particular involvement in the agricultural industry and a projected opinion and assessment of the current situation — not particularly bright at this time.

It was of disappointment that attendance was far below what was anticipated but the hundred or so who attended enjoyed an interesting and thought provoking session. At the conclusion of the addresses the Speakers formed a panel for questions. The Seminar was organised and Chaired by Mr Robin Lowry and a small committee to whom thanks must be recorded for a lot of work on an ambitious project and some commiseration for what, for them, must have been a disappointing response.

## SIMBEEF

Since our last issue not a great deal of Simbeef events have taken place, but one report that just missed our last issue takes pride of place.

**Northland:** The relatively small group of people involved in Simmentals in this area are certainly making an impact. In May, the Northland area held its annual Hoof & Hooks competition and in conjunction held a very successful field day event at the yards in which the Hoof competition was held. The competition attracted 105 entries. Results of Simmental successes are tabulated below.

The field day, which took the form of a display and demonstration was originated and organised by members of the Northland Simmental Club and sixteen Breed Societies took part. Each Society had five members to display its animal and talk about attributes of the Breed before a packed gallery of several hundred spectators. A fat scanner was also demonstrated and the Simmental Society's very successful beef slides were screened with great response. In competition Simmentals had a great day:

### **Class II (2 teeth)**

Hoof — 1st Simmental — R. Edwards  
Hook — 1st Simmental — R. Edwards  
2nd Simmental — Mrs B. Edwards

### **Class III (4 teeth)**

Hoof — 1st Simmental — E. Pickens  
2nd Simmental — T. Sloane  
3rd Simmental — W. McLean  
5th Simmental — L. Sloane  
Hoof — 2nd Simmental — W. McLean  
4th Simmental — L. Sloane  
5th Simmental — E. Pickens

The success of the field day and our cattle at this event deserves high praise. Until a few years ago Simmentals were looked at with suspicion and their breeders with doubt, in this same area. Through their own efforts the Northland Club have put the breed on a firm footing from which it is rapidly expanding in numbers and acceptance. They held another sound sale of bulls this year and have just recently mounted a successful exhibition of cattle at the Whangarei Show.

## FROM THE SOUTH

Big steers appear in local markets from time to time. We seem to have had our share and yet another came through Addington not long ago. Colin Patterson of Lakeside sold a three-quarter-bred cross Simmental steer for \$820 one of the highest prices this season. 'Herbie' still holds the local 'ribbon' at \$1,085, but nearly lost it earlier in the year when another big fellow sold at just over \$1,000.

# simbeef

symbol of progress

## SIMBEEF TAG YOUR CALVES

Over the next few months there will be a considerable number of calves put forward for weaner sales. Simbeef is becoming a well-known marketing symbol — in fact someone in America wrote to us about it recently. If you have not already done so, tag your sale calves with the distinctive yellow tags — they normally run top, or close to top, of the markets. Promote yourselves and your cattle by using these tags.

## 1984 WORLD CONGRESS — (Sydney, April 10-14)

Members will have already received basic information on the Congress — if you contemplate attending please do not neglect to let us know, as we must inform Australia so they can make provisional bookings. Sydney at Show time is extremely busy and it is very difficult to get accommodation in a group tour situation without booking well in advance. It will be a tremendous event and you will not get the opportunity to attend a World Congress closer to home. (An enclosure circular produced by the Congress Committee is included with this issue.)



**Guthreys**

## A.I. TRAINING COURSES

Designed to train farmers to inseminate their own cows.

Courses held at Christchurch during Autumn/Winter 1983.

Write for further information to:

**GUTHREY BREEDING SERVICES,**

**P.O. Box 97, Kaiapoi or  
PHONE KAIAPOI 6175**

Please send information to:

Name: .....

Address: .....



*Hororata breeder Neil Olliver who has been a steward in the Simmental section since 1977 when the breed first began showing.*



*Mrs Melinda Carter winner of the 'Herdsmen' trophy — a groom cane. Melinda has been a consistent competitor at our shows.*

**MOHAIR SOCKS**



**WORLD FIRST**

### **'The Ultimate Sock'**

Containing 37% Mohair; 34% Merino; 6% Silk; 23%Nylon

*The Latest Development in Mohair — Mohair gives you the Best Insulation . . .  
Softness . . . Durability . . . Comfort*

**Excellent Presents for N.Z. and Overseas Posting**

**\$10 Per Pair by Mail Order including Postage and Presentation Box**  
(Selling in U.S.A. for \$24!!)

**Mens Work Sock Length** — 3 Colours — 6 Sizes

**Womens Knee Length** — 3 colours — 3 sizes

**Order From: MOHAIR SOCK DEPARTMENT  
MOHAIR PRODUCERS ASSOCIATION  
P.O. BOX 105 BLENHEIM**

**ORDER FORM** (Cut out and mail enclosed with your cheque.)

|           | MENS SOCKS |    |     |     |     |     | ☆         | WOMENS |    |     |
|-----------|------------|----|-----|-----|-----|-----|-----------|--------|----|-----|
| Foot Size | 8"         | 9" | 10" | 11" | 12" | 13" | No. Pairs | 8"     | 9" | 10" |
| Natural   |            |    |     |     |     |     |           |        |    |     |
| Fawn      |            |    |     |     |     |     |           |        |    |     |
| Navy      |            |    |     |     |     |     |           |        |    |     |

\$ .....

**Name** .....

**Address** .....



# The Computer

## COMPUTER RETURNS

The majority of our breeding members have now been satisfactorily brought up to date with the computer system and we are awaiting printouts for Registration Certificates. Those members who have furnished 1981 Calf Entry Sheets will have received back a computer printout in the form of an Animal Disposal Listing to allow them to 'purge' their records and set up those animals which they want on their 1982 Calf Entry Sheets.

We have received back a considerable number of these Animal Disposal Listings and as a result a number of breeders have already received their 1982 Calf Entry Sheets — the system is working. We ask that those who have not yet returned the Animal Disposal Listing do so as soon as conveniently possible so that we can produce the relevant 1982 Calf Entry Sheets to enable you to register your calves born this year.

Calf Entry Sheets must be returned to the Office by the 31st May, 1983. After that date penalty fees will apply.

If any member is still in a problem area with the computer, please do not hesitate to contact us — several already have and we have been able to get things sorted out for them without too much hassle. Once the system is cleaned up it is relatively simple both for us and the members.

## COMPUTER PRINTOUTS — REGISTRATION CERTIFICATES

Currently the computer is producing a Sire/Dam pedigree only in its printout. We appreciate that this is producing a few problems, particularly when an animal is transferred as the purchaser does not always receive the full pedigree of the animal.

The reason for a Sire/Dam pedigree only is not an error. At the time the programme was set up a full pedigree was considered, but the expense and logistics of putting every animal's full pedigree on to the computer was prohibitive. It would have cost an enormous amount in 'punching' and our own office time.

As time goes by pedigrees will build up — even now the 'K' animals are to two generations. In the interim we would ask that those who have the background information (and most have), to **neatly** fill in the pedigrees on the Registration Certificates, particularly when they sell an animal. The Sire pedigree is not so important if he is an A.I. Sire as he will be in the Sire booklets, but a 'Home Sire' should be written in so that the purchaser has both sides of the pedigree.

## TRANSFER FORMS (New Format)

As we exhaust stocks of stationery we usually take the opportunity of revising and updating layouts. This we have just done with our Transfer Forms which will now 'key in' with our Computer system. Full instructions are written on the face of the form — please complete and action as required.

(TRANSFER FORMS ARE AVAILABLE FROM THE OFFICE.)

## MAGAZINE PRODUCTION

We have for a number of years produced four issues of the 'New Zealand Simmental'. At a Council Meeting earlier in the year it was decided that the number of issues would be reduced to three, mainly due to continuing cost increases. Our magazine is apparently held in high esteem and we are most reluctant to reduce the standard of production or content. Future issues will be made in February, June and November. The June issue will be in a similar format, but will be in reduced size (structurally) and will contain our Sales Catalogues as well as a balance of editorial material. All issues will accept advertising. By inclusion of our Sales Catalogue within the magazine we will also make some considerable cost savings. Catalogues have also escalated in price over the past year or two.

## 'HOMESTEAD' RECORDS

Our membership is made up of many people who have various ideas on how to keep those all important records. In my travels I have seen many systems from the 'deep litter', 'behind the kitchen clock' the 'stacker beer carton' through to some remarkably sophisticated systems including a desk computer.

I am certain that there are some relatively simple and efficient systems to use that could be of great assistance to other members in keeping their records in an orderly fashion. The sort of thing I am thinking about is basic records you keep on your cow herd, calvings, matings, A.I., tattooing etc. Such records that you use at your yards or retain for production of information for the Society systems.

I invite anyone who has what he or she thinks is a good system to provide me with details of it and provided it is not too complicated or longwinded for me to understand, I will publish it in a future issue of the magazine. If as a result we unearth what looks like a really good idea we might even look at it for Society wide use.

If you have any practical idea, let's hear about it.

**HAVE YOU EVER ADVERTISED  
IN YOUR MAGAZINE ???  
HOW ABOUT THE NEXT ISSUE?**

# Miscellaneous

## NOMENCLATURE (WHAT'S IN A NAME)

Within our system we have names for most things and the important ones are carefully construed and we should stick to them. It has been noticed that the word 'fullblood' has crept into our vocabulary (and indeed recently appeared in print). The title 'fullblood' has been used to identify or highlight an animal that is a purebred of imported status or one that its known pedigree shows only purebred ancestry. In New Zealand we have **two** registers only — one is the grading-up register and the other the purebred register. Until an animal is of  $\frac{1}{16}$  Simmental blood it is in the grading-up register, but once it reaches the fourth cross it is recorded as a **purebred**. We **do not** differentiate between those cattle that reach purebred status from the grading-up system and those that happen to have come in, or been bred from overseas animals — they are all **purebreds**.

Overseas, it is known that at least one country has two 'pure' registers. Just how they propose to keep the two separate in the next ten years if they intend to improve their bloodlines is a good question. They are most uncertain themselves.

In New Zealand we have **purebreds** and there is

no suggestion that we should have otherwise. If you are supersensitive about the ancestry of an animal check out its pedigrees, either with the breeder or the office.

There is no such thing as a **FULLBLOOD** in our register.

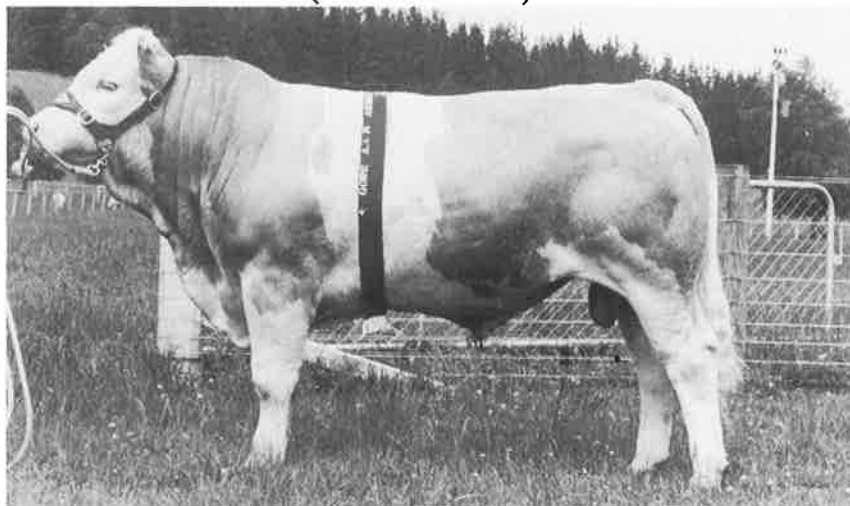
## SHOW AND SALE CATTLE

Each year we have Sales and Shows and the animals that go forward to these fixtures have, or should have, the same basic preparation and handling. In our Sales we have provision for unled animals, which is logical, but if they are tied up and handled at an early age they seldom forget the experience and are far more likely to be co-operative when it comes to the time of preparation for whatever sale or show they may be going to. Past experience has shown that those animals that have had good preparation head off those that have not.

Most breeders have some idea what they will have in the 'market train' and it certainly is never too early to get a few basics established. Weaning seems to be a time when a lot of people do the first 'tie-up'. You have a sporting chance of winning — if the animal is not too large.

## EAST DOME STUD

(Herd No. 901)



**'East Dome Lucky'**

Top Priced Simmental at the 1982 South Island Sale. Sold to Australia for \$4,200. 'Lucky' is yet another East Dome animal to go to Australia.

A selection of young stock available this season. Inquiries and Inspection Welcome

**W.A. ROUSE, EAST DOME, FIVE RIVERS, R.D. 3, LUMSDEN**  
**PHONE LUMSDEN 86R.**

# Miscellaneous

Manawatu River Road,  
NORSEWOOD.  
15.11.82.

Dear Mr Johnstone,  
Please find enclosed photo you may like to print in your magazine. This is a photo of myself and my Simmental calf called 'Eddie'. At the school club day in Norsewood he won two firsts, one second and one third.

My father milks Eddie's mother in the herd. This is my last calf as next year I will be going to Dannevirke High School.

Yours faithfully  
Graeme Hutching.



*Congratulations Graeme, we hope we will see you in the show ring later on.*

## SIMMENTALS FOR SALE . . .

Mr David Kerr of Pleasant Point is disposing of his small property and has for sale —

- 1 2yr Purebred Bull
- 2 Purebred Females
- 6  $\frac{7}{8}$  Females
- 3  $\frac{3}{4}$  Females

Several have calves at foot and are back in calf.

Enquiries welcomed.

**Phone: Timaru 27 673  
(evenings)**



*N.Z. Studstock Manager for Wrightson NMA, Tim Russell watches the Simmental judging.*

## Printing Schedule for Magazine

ISSUES — February, June, December.

### CLOSING DATES:

Space/Script — first week, February, May, November.

Advertising Copy — last week, February, May, November.

|                                  |          |
|----------------------------------|----------|
| Rates: Inside Cover (two colour) | \$125.00 |
| Outside Back (two colour)        | \$150.00 |
| Full Page Internal (B. & W.)     | \$100.00 |
| Half Page Internal (B. & W.)     | \$60.00  |
| Quarter Page Internal (B. & W.)  | \$30.00  |

Inserts and loose leaf rates by inquiry. Design and finished artwork arranged at reasonable rates.

## HORSE SENSE

A breeder on his way into town had the misfortune to have his near new car stop for unknown reasons. It refused to re-start so he lifted the bonnet and peered in some confusion at the complicated mechanical layout before him. As he pondered about what he should do a horse happened by, it stopped and looked under the bonnet and said 'try tapping the carburettor'. In considerable surprise the breeder looked up and in doing so cracked his head on the bonnet. By the time he had collected his senses the horse had gone. Picking up a stone he gave the carburettor a couple of 'taps', climbed in and to his amazement the car started. Somewhat shaken, he drove off and stopped at the first pub he came to to calm his nerves. A 'local' was at the bar and our breeder recounted his story. The local looked thoughtful and questioned 'What colour was the horse??'

'Dappled grey,' replied the breeder. 'Oh, that's OK,' replied the local, 'there's a black one up that road, but he's got no mechanical sense at all!'

# RISSINGTON SIMMENTALS



## 'LJB JADE'

(Semen available direct from the Owners: \$12 per straw)

Rissington highlights for 1982 have been many:

- ★ Topping Stortford Lodge market with Simbeef weaner steers
- ★ Taking 1st place on the Hoof at the Annual Beef Cuts Competition
- ★ Having a total clearance of our Sale Bulls
- ★ 'Jade' winning the Meat & Wool Cup at Gisborne and Hastings — for the second time at both shows
- ★ Winning the All Breeds Champion yearling class at Hastings with 'Rissington Monitor', a scurred bull by Polled SBL 63K
- ★ Being given the honour of judging at the 1982 Royal
- ★ Discussing with satisfied clients the results of cross-breeding with our Performance Tested Bulls

**June 22nd 1983 is the date for the first Rissington  
Auction of bulls and selected top weaner heifers**

ENQUIRIES AND INSPECTION WELCOME

**JOHN AND STAR ABSOLOM**

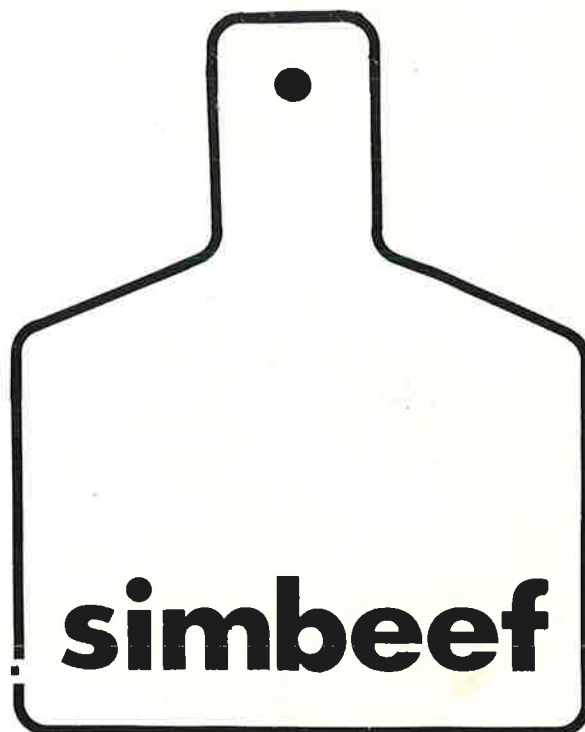
**R.D.4 NAPIER, PHONE: RISSINGTON 836**

# **simbeef**

**symbol of progress**



The marketing of  
commercial  
beef cattle by  
identification . . . . .



**simbeef** cattle are of at  
least 25% Simmental blood

**simbeef** is the commercial  
division of the Simmental  
Society.

Enquire how you too can  
become a **simbeef** member.

Simmental Cattle Breeders. Box 25100  
Victoria Street, Christchurch.