

new zealand simmental



autumn issue

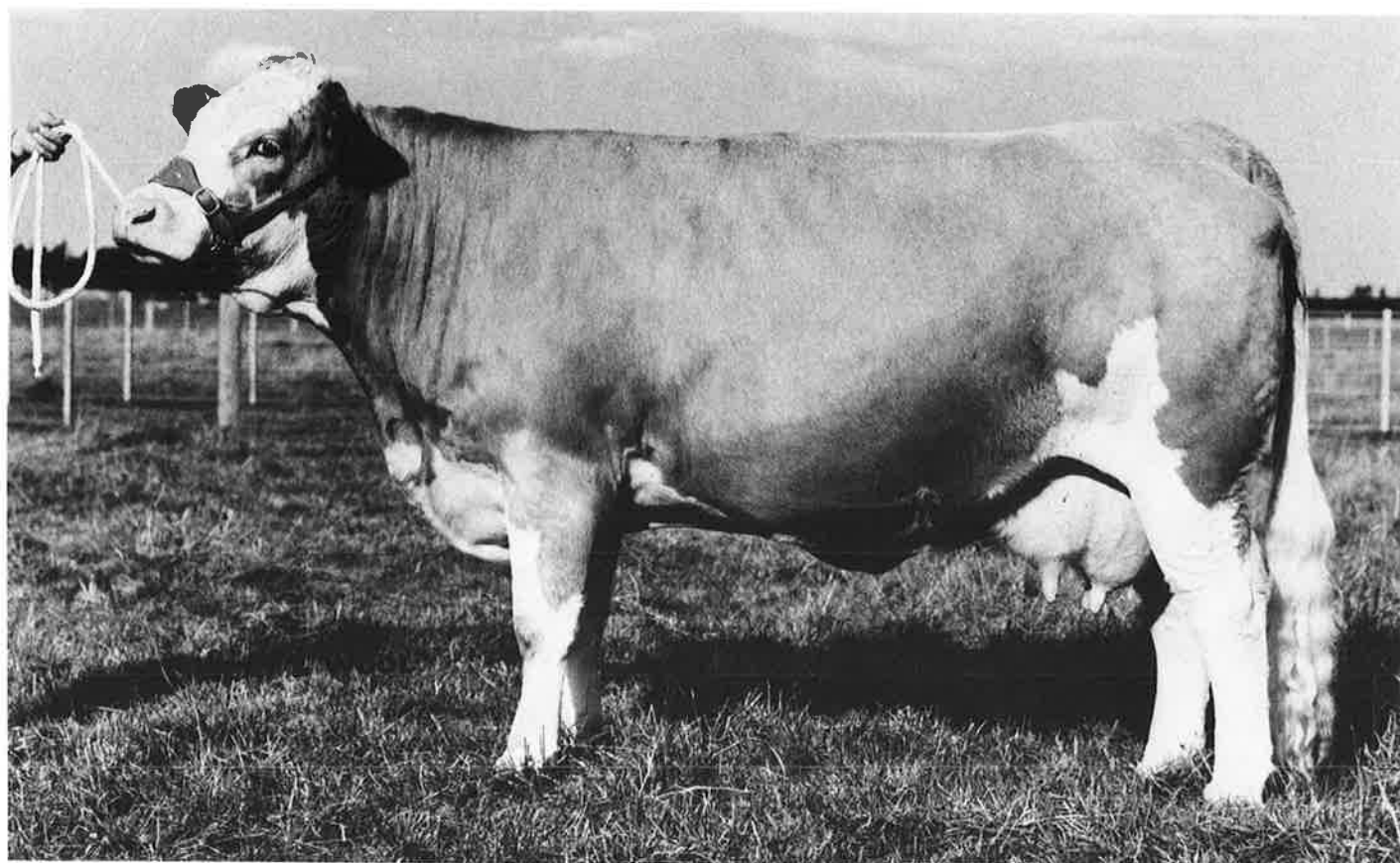
1979

number eight

Registered at Post Office H.Q. Wellington as a Magazine

RISINGHOLME SIMMENTALS

Bred for Size and Quality



**Three Top In-Calf Heifers to be
Offered at the 1979 National Sale
Due July, August and October**

**One by HAMLET out of Top
Breeding Cow pictured above
Two by SCOTTISH EXTRA SPECIAL**

Enquiries & Inspection Invited

**Stan Crosson, Methven
Phone Highbank 713**

THE SIMMENTAL CATTLE BREEDERS'



SOCIETY OF NEW ZEALAND (INC.)



118 VICTORIA STREET, CHRISTCHURCH 1, NEW ZEALAND.

P.O. BOX 25·100, VICTORIA STREET, CHRISTCHURCH. Phone 793·166

Contents

Editorial	1
Profile	2
People	5
The Council	7
Miscellaneous	8
Sales	9
Clubs	11

Advertisers

Risingholme
Rutherford
H.R. Lowry
Balig Agent
South Pacific Simmentals
Levels Simmental Stud
Scottish Semen Services
Bullpower
Tiki

Office Staff

Ian S. Johnstone
(Society Secretary)
Phone: Christchurch
(Bus.) 793-166
(Pvt.) 487-572
Mrs. Jocelyn Gilchrist
(until end of April)
Miss. Sue Johnstone
Mrs. Ann Booth

Editorial

What does 1979 hold for us as Simmental Breeders?

The phenomenal lift in the price of beef and the allied escalation in the price of store and breeding stock has brought a degree of confidence back to the cattle industry that has been sadly lacking over the past two or three years. Predictions both here and overseas have said this would happen. Now it has, where do we stand?

It will affect us as cattle breeders as it affects anyone who breeds cattle — no more, no less *unless* we are prepared to get out there and promote our own breed.

The Society administration can do so much, but without the backing of the individual members our efforts are of minimal effect. Promotion of the breed should start at breeder and district level, shows, exhibitions, beef competitions, any avenue that is open to you. If you sell cross-bred cattle through your local saleyards (and we are talking good cattle only), advertise them as Simmental Cross, and when the Auctioneer steps onto the rail make sure he says they are Simmental Cross. If you sell a bull (percentage or pure) follow up and see where he goes and what the purchaser thinks of him — you could have a repeat market. Keep your fellow breeders involved. If you have not met the guy down the road call in and see him. He will be complimented and could well have ideas you could use. Those who make a success of selling talk about what they have to market. Simmentals are no exception.

Council Members

President: R. H. Kerr, Harlau, Salisbury, R.D. 2, Timaru.
Phone: Timaru 88.996
Vice-Pres.: R. N. S. Cox, The Levels, R.D. 4, Timaru.
Phone: Timaru 82.418
Councillors: W. Gut, R.D. 29, Kaponga, Taranaki.
Phone: Kaponga 741.
G. D. Locke, Gordonton Road, R.D. 1, Taupiri.
Phone: Gordonton 877.
H. R. Lowry, Pukekohu, Private Bag, Havelock
North. Phone: Waimarama 832.
R. G. Macdonald, Tixall, Chinnerys Road, R.D.,
Kaiapoi. Phone: Woodend 741.
J. R. Sutton, Waihaorunga, R.D. 7, Waimate.
Phone: Waihaorunga 878.
E. W. Turrell, Kaituna, R.D. 2, Christchurch.
Phone: Ataahua 898.

Profile

TNL Group Redwoods Valley Farm from wasteland to productivity



THE REDWOODS VALLEY (NELSON), PROPERTY OF THE TNL GROUP LIMITED

The TNL Group is large by any standards. Based on transportation early in the century, it has grown to mammoth proportions with influence throughout New Zealand. In the Northern part of the South Island, it has become the major freight mover in the area in the absence of a railway system, while its coach services may be seen throughout the country both in scheduled and tour services.

TNL Group has a strong link with its district of origin and it was not surprising when it decided to move into farm development that it chose a property in the Nelson area where it could demonstrate what could be done within marginal land that had reverted to what can only be termed as waste area.

In 1956, the Group leased 2,248 acres of Crown land in the Moutere Hills seventeen miles southwest of Nelson. The area leased was unimproved and covered with gorse, fern, heather and self sown pines. A condition of the lease was that eighty-six acres per year be developed and it was expected that 740 acres could be developed on this block. In 1963, TNL Group entered a purchase agreement for the block adding to it other small surrounding blocks to make up a holding of 2,700 acres. Development was started by giant discing in the autumn to knock down the overgrowth, leaving it for six months then burning off. Following the burn the area would be disced again and worked down to a seed bed for January/February sowing. With this method, some 1,800 acres were cleared and sown down in the first four years.

The soil type of the property was low in natural fertility and tended to be acid requiring immediate application of lime and fertiliser in the development programme. Two tons of lime and approximately fourteen cwt. of malybdc super per acre were applied at sowing with another fourteen cwt. going on again in the spring. The total area is topdressed annually with potash superphosphate and

other trace elements such as boron and cobalt as necessary. In the initial sowing down a mixture of Ruanui and Manawa ryegrass, white clover and cocksfoot has been used. Being developed from extremely rough country, there has been a continuing need for control of gorse regrowth but this has now reached a stage of a small maintenance programme only. Of the original 2,700 acres only 300 acres remain undeveloped.

With the development programme, subdivision has been undertaken and paddocks range from thirty to fifty acres allowing for well controlled stock management. Water reticulation, a major requirement in the hot summers of the area, has been installed throughout the property in some eight miles of piping. At peak offtake, 22,000 gallons of water go through the system daily.

The property in its present state reflects the great foresight of the Directors of the TNL Group and the efficiency and dedication of the property manager, Mr Rupert Martin, who has been there for nearly twenty years. Originally it was planned to run the property as a sheep unit with complimentary cattle but in 1971 it was decided to start a grading up programme with Simmentals ultimately establishing a Purebred stud. This programme has been followed through and in June 1978 the stocking pattern of the property gave a carrying capacity of 4,000 ewes and replacements and 1,200 Simmental cross cattle equivalent to 13,000 stock units. Redwoods Valley has nine Purebred Simmental bulls and has now reached seven-eighths status in the grading up programme. A few bought in Purebred females are also on the property. The Simmental herd is run as a commercial unit and the steers from this property have found a ready and continuing market in the district. Rupert Martin has not only done a great deal for his employers and this property, but for the Simmental Breed. His constant enthusiasm backed by the results he achieves is an adequate illustration of what can be done with these cattle under normal farming conditions.



'RUTHERFORD' SIMMENTAL STUD

Redwoods Valley R.D.1 Richmond Nelson

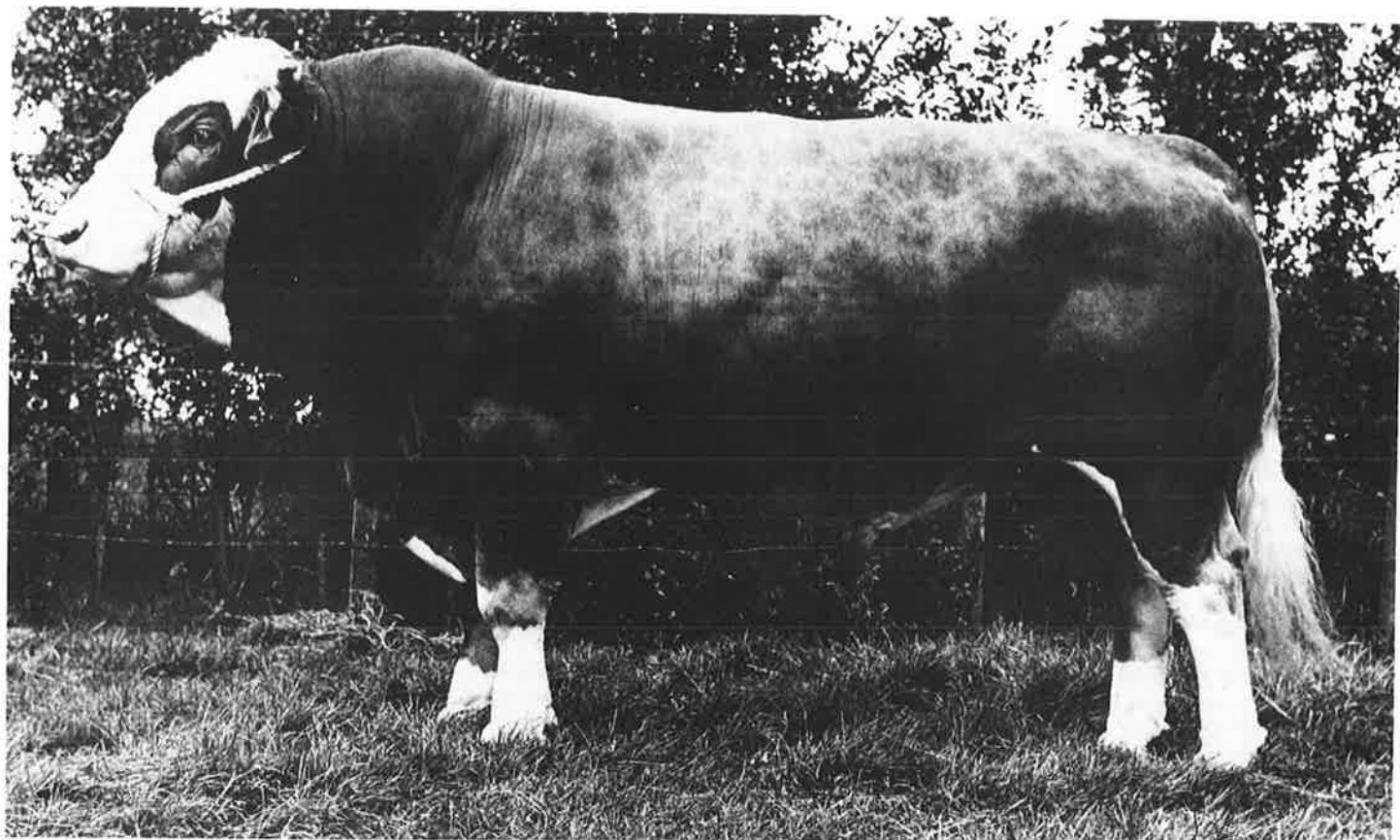
Founded 1972 • A Division of the TNL Group Limited

Mr. Rupert Martin • Farm Manager • Phone Redwoods Vly. 744

The Directors and the Farm Manager are exceptionally pleased that the Members of The Simmental Cattle Breeders' Society of New Zealand will have the opportunity of inspecting the property and stock when they are in Nelson for the Annual Meeting in July this year. We can assure all those attending of a most warm and cordial welcome to one of the largest grading up herds within New Zealand.

Transport for the Field Day will be provided by courtesy of Newmans Coach Lines Ltd, a member of the group. A buffet luncheon will be provided by the Group, so that you may the more easily enjoy your sojourn in the 'sun belt' of New Zealand. May we anticipate by extending a welcome to you in advance.

Enquiries are welcome and inspection can be arranged to suit your convenience if you cannot participate in the Annual Meeting Field Day.



FURTHER SHOW SUCCESSIONS FOR SCOTTISH SEMEN SERVICES "SCOTTISH PRINZ"

A strong contender for the title 'bull of the year' must be the outstanding Austrian Simmental *Scottish Prinz* owned by Scottish Semen Services and currently standing at their cattle breeding centre at Newlands, Perthshire, Scotland.

At the 'Simmental '78' show organised by the British Simmental Society and held at Bingley Hall, Stafford, in May — the biggest display of Simmental cattle ever staged in the United Kingdom — *Scottish Prinz* demonstrated his unchallenged ability to produce progeny of Championship quality. Out of eight classes no fewer than four were won by *Prinz* — sired progeny, and his final tally of successes included the Supreme Championship, Champion Bull, Reserve Champion Bull, and Reserve Champion Female awards.

After sweeping the prize-list at Simmental '78 in such a convincing fashion it was perhaps no great surprise that *Prinz's* progeny should move on to even greater achievements at the Royal Show held at Stoneleigh in July.

Despite the extremely high standard of livestock on show, *Prinz's* progeny dominated the prize-list by taking four of the five First Prizes in the various classes.

Solway Fabious won the Senior Bull award, *Cloford Grenadier* — Junior Bull; *Overthwaite Fantastic* — top Young Cow; and *Felixstow Felicity* — best Heifer.

Cloford Grenadier went on to annex the Reserve Overall Champion title.

This string of notable successes in two of Britain's premier stock shows has firmly established *Scottish Prinz's* reputation as the outstanding Simmental breeding bull of the year — indeed, perhaps of all time.

"*Scottish Prinz* is an Austrian Simmental imported by the Scottish Semen Services in early 1975," stated Mr A. R. Campbell, Veterinary Director of Scottish Semen Services. "The convincing list of Show successes achieved by his progeny are proof of his tremendous potential to breed size and conformation allied to weight gain."

"We are naturally proud of his achievements, which reflect the quality of the Scottish Semen Services stud."

"All our Simmentals have done exceptionally well, providing their ability to meet in every way the exacting standards demanded by our bull selectors, who are breeders of international repute."

Semen from *Scottish Prinz* and other Scottish Semen Services' Simmental sires is generally available throughout Australasia through recognised Scottish Semen Services' agents.

Advertisement

**1979 NATIONAL SALE
TIMARU, WEDNESDAY 16th MAY**

RETIREMENT OF THE SOCIETY PRESIDENT

At the conclusion of the Annual Meeting this year, Mr R. H. Kerr of Harlau, Timaru, will step down from the Presidency of the Society and the Council after seven years in office.

A foundation member of the Society which held its inaugural meeting in June 1971, Mr Kerr served on the Steering Committee in the first year and was elected President by the first Council on 12th May 1972. From a fledgling organisation, he has guided the administration of the Society through both buoyant and depressed years with purpose and objective. The Membership and the Breed owe a great deal to him for his diligence in administration of the affairs and finances of the Society. The sound base on which the Simmental Society now stands is largely due to his personal efforts in establishing substantial and secure reserves. In his Chairmanship of the Council, he has shown strength and leadership with the interest of the Membership and the Breed always firmly his priority. He has given endlessly of his own personal time to the affairs of the Society and it has been an unusual week if he has not been in contact with a Councillor, the Office or the Secretary on matters of Society business.

Mr Kerr's retirement will be a loss to the Society's administration but he retires in the knowledge that he leaves his successor a solid and well established base from which to work which in itself is a reward for the great effort he has put into this Society.



R.H. KERR

OUR STAFF

We are sorry to record that we will shortly lose one of our staff who has been with us for two and a half years during which time she has been a most popular person, both with those whom she has worked, and our members. Mrs Jocelyn Gilchrist leaves us in April to have her first child. We will miss her badly, but look forward to the day when she is able to come back occasionally, and help us during our busy times as most of our ex-staff seem to do.

As her replacement we welcome Miss Sue Johnstone who comes from a farming family background in South Canterbury. She is currently immersed in learning the very complicated operations of the office, and we are sure she will prove a worthy replacement for Jocelyn.

To settle any speculation that the Johnstones' family are taking over the office, we would state that she is not an immediate relation to the Secretary, but in the 'herd book' there is lineage.

Mrs Ann Booth who has been with us for over four years makes up the third permanent member of our staff, as it stands at the present time. We are also most fortunate to have available a nucleus of people who we can call on for help in times of great activity, which gives us the flexibility we require in running the office.

OUR JUNIOR ENTHUSIASTS

Within our Membership there are quite a number of young people who give a lot of time and effort to our Breed. Frequently their enthusiasm and work goes unheralded. One such family are the McLean's of Hamilton. Sandra, who first came to our notice a couple of years ago, assists with her Uncle's herd and does much of his recording and enquiry work for him. We met her first at

the National Sale in 1978 where she showed herself as an enthusiastic and obviously capable young stock woman. Sandra has recently joined the Society as an Associate Member.

More recently we have received a fourth form English project done by her sister, Glynne, last year. Very neatly and well set out with coloured illustrations, Glynne received a well deserved 'A+' for this project. Her research into the Breed and its establishment both here and overseas constitutes a lot of work. Public relations and promotion work in many ways and the enthusiasm of young people such as these and other younger people within our Membership is to be encouraged and commended.

ROYAL SYDNEY SHOW

This event will be held as this issue of our Magazine goes to print. The New Zealand Society will be represented at the Sydney Show this year with a small wall display in the Simmental Pavilion at the Sydney Showgrounds. The Secretary will visit Australia for the Show and will also attend a two day seminar on Simmental cattle being held close to Sydney. This will involve general assessment of the breed, preparation of show entries, handling cattle, steer selection for carcass competition, bull care and marketing and will be conducted by a panel of people with special qualifications in each field.

While in Sydney, opportunity will also be taken to attend the Australian Royale Sale, the judging at the Show and the Annual Meeting of the Australian Association. Mr Rodney Cox will be in Australia at the same time and will represent the Council at the Australian Annual Meeting and other Society matters.

AFTER SALES SERVICE

As with any good product marketed, there should be a back-up service behind it. At a recent Meeting of the Promotion Committee an idea was put forward that has considerable merit and which we wish to follow up. If you sell an animal to a commercial breeder, for example, a percentage or Purebred bull for commercial purposes, please advise the Office of the Purchaser's name and address. We will place him on our mailing list for the Magazine so that he has closer contact with the Society and the Breed.

As an extension of 'after sales service' a follow up should be made direct to the Purchaser to see how your animal has been accepted and what he has done. This is done overseas with remarkable success and has often resulted in a further sale. It is those people 'on the fringe' that we want to encourage. They are the future Members or the outlet for what we breed.

NEW SIRE REGISTERED (IE 2253)

Guthrey Breeding Services Kaiapoi and I.S.D. Palmerston North have recently registered a Canadian bull "TRN Mr Pari" on the Sire List. A son of Parisien, this bull is a medium dark red with a white shoulder 'saddle'. More detailed information can be obtained from the suppliers.

ANNUAL MEETING 1979

As advised this will be held on the 2nd, 3rd and 4th of July — NOTE the change of date from our last magazine. We look forward to our usual very good attendance of members and friends.

If you have any matter regarding the Rules of the Society which you wish to raise at the Annual General Meeting, you are reminded that you must give Notice of Motion in writing if you require anything altered. This must be received by the office in time for members to be circularised thirty days before the meeting.

A COMMENT FROM ABROAD

Many members will have known Mrs Nonie Childs who worked for us for several years and left a year ago to live in England with her husband and daughter for a year or two. We are pleased to advise that their first year has been one of success despite the snow, the strikes and the uncollected rubbish.

Recently they holidayed in Austria for some ski-ing and stayed at a small village where their landlady (who spoke little English) had twenty Simmentals. Nonie sent us back a clipping from the local paper, showing a photograph of a Simmental cow with triplet heifer calves at foot. Holding the quartet was the oldest man in the village, who stated he had not seen triplet heifers in his life time of four score years (and some). The event is written into the history book of the village.

BALIG AGENT

The Well Known Natural and A.I. Bull

To be offered National Simmental Sale Timaru 16 May



Sire: Scottish Neff

Dam: Alune

Born: 4.8.71.

**Regarded as one of
the best Simmental
Bulls outside Europe**

Balig Agent was Performance and Progeny tested against three internationally-known Bulls by the M.A.F. Agent came out on top. Records available.

For the last two years paddock mated. Absolutely sound. Past owners have used him in all possible crosses.

Further information from:- H.R. Irving, Wairaki Station, Otautau. Phone 725 Orawia.

The Council

The Council met for the first meeting of the year at the end of February. As is usual, the first day was spent with Committee Meetings with full Council Meeting the following morning. Reports from Committees are followed by Council matters.

Finance: The current situation was sound although some reduction in income which had been predicted, was apparent. Office overheads were reduced to some extent by a smaller staff establishment, and expenditure was equal to previous quarters and within the budget.

A careful analysis of members' accounts was made and appropriate action taken with some which showed outstanding of some age. It was decided that a closer control would be placed on payments and in future a monthly revision of accounts would be made, and those accounts which were not being met within a reasonable time would be sent an account rendered. Within the accounting system there was a small number of debts for which payment was being pressed and these had been placed with the Society Solicitor.

The Committee discussed late fees for overdue registrations and it was resolved the present system would remain in force. This coming financial year annual subscriptions will be sent out at the beginning of April with each member's March statement. Previously subscriptions were added to members' accounts at the beginning of the financial year (1st April) but not received by members until statements were sent out at the beginning of July. Costs were being watched and economies taken where possible without restricting the activities of the Society.

The drop in export cattle from ovum transplants will make itself felt this year but this has already been anticipated.

With the return of more buoyant conditions in the cattle market it is considered the confidence of breeders will be re-stimulated. This has already become apparent from considerable inquiry from the Australian market.

Promotion: Mr Lowry presented an analysis of expenditure in promotion which stood well within budget. In promotion there had been worthwhile projects within Clubs and at the time of the meeting a number of Clubs were planning Field Days which would be attended by Councillors and the Secretary.

National advertising would continue in selected periodicals such as the New Zealand Farmer, Meat and Wool and the New Zealand Dairy Exporter. Emphasis would be directed at the bull buyer.

Delegate's meetings for two representatives from each Club will be held in each Island in May. Clubs will be advised of specific dates in due course.

The Committee was shown the wall panel display which will go over to Sydney for the Royal Show in early April. This consists of three panels covering 8ft x 3ft and pinpoints stud breeders who export to Australia together with various photographs. The display is of quality and in good image.

The Promotion Committee has for some time been critical of the method in which the Meat and Wool Cup has been judged at A. & P. Shows. At present each breed judge, judges his own breed and there is a certain amount of parochial bias. The Committee has suggested that

judging of this event should be done by people who are outside the breed, e.g. a meat export buyer, a local trade buyer and one other commercial breeder of cattle. The Committee has had some response to this suggestion and the whole matter will probably be ventilated through the Meat and Wool magazine.

The Committee recommended the purchase of a new 35mm Camera for the Secretary's use. At present he uses his own camera which is of some age. Opportunity to purchase this unit duty free will be taken when the Secretary goes to Australia in April.

Technical: This Committee outlined progress on the Sire Reference scheme which had been satisfactory. Plans were discussed for the forthcoming season and the Secretary advised he had written to the Scottish and British Milk Marketing Boards for information on new bulls.

As main topic of the meeting Mr Sutton outlined the computer project and negotiations that had been held with the National Beef Improvement Council in Wellington. Mrs Pat Branscombe of the Dairy Board Computer Centre attended the meeting and spoke on the finer points of such a system. Progression on to computerisation of our records will begin this year, and members will have an opportunity to hear more of this scheme from Mrs Branscombe at the Annual Meeting. (A note on this project also appears elsewhere in this issue.)

Sales: The main topics discussed at the Sales meeting appear as separate sections under SALES in this issue. In discussion on sales there was some comment on venues. It was felt by some that venues should alternate between centres and by others that the sale should be held at the same venue in each Island each year. It is a matter for discussion and could be a good Annual Meeting topic under general business.

Council: At full Council the proceedings of the previous day were discussed and ratified. The Council, in general business, discussed plans for the Annual Meeting which is now in full preparation, and of which members have been advised.

The Swiss Cattle Breeders' Federation had issued an invitation to the Secretary to attend the European Annual Meeting and the Annual Swiss Simmental Cattle Show as their guest while in Europe, but it was considered that the visit was too short to be justifiable.

Meat Board, Hoof & Hooks Competitions: The recent move by the New Zealand Meat Producers Board, in recommending at A. & P. Associations who run 'Hoof and Hooks' competitions, various changes in judging, was strongly criticised by the Council as it felt that it placed the heavier breeds at considerable disadvantage. By increasing the age criteria to two years and limiting the weight limit to 300 Kilograms breeds such as Simmental will be at a disadvantage. Many animals of two years would dress out well over the 300 kilogram weight. As the greatest percentage of eligible steers are born in the August/September/October period, they are only eighteen to twenty months at time of entry. On this basis the autumn born calves of which there are much fewer have control of this competition. The Council directed that a letter be written to the Meat Board drawing this situation to their attention.

The Council

Beef Clinics: It was suggested that the Council investigate the possibility of holding Beef Appraisal Clinics for Simmental Breeders. Such Clinics have been held over the past few years at Massey University under the direction of Mr R. A. Barton and have been widely acclaimed. The Secretary was asked to write to Mr Barton to see if such Clinics could be set up.

Overseas Speakers: The Council also discussed the possibility of obtaining a World Authority on cattle and allied topics who might visit New Zealand and give a series of lectures.

Some years ago an American visited New Zealand and conducted a lecture tour throughout the country with great impact. The Secretary was asked to write to the American Association in this first instance to see if they would recommend a suitable speaker. The promotion of such a person would be sought from an outside source.

Next Council meeting will be held in June on a date to be finalised.

COMPUTER

Since our last Magazine, we have made considerable progress on the establishment of a basic computer programme. We will shortly embark on the setting up of basic entries for pedigree recording and calves from the 1979 calf drop will be progressively entered. Initially the programme will record pedigrees and produce our Registration Certificates from which we will receive a Herd Book and various other useful side effects. As progress is made our pedigree system will be expanded to include performance recording.

Costings at this stage appear very reasonable and while there is still a considerable amount of work to be done in finalising the system it would appear that the project will not necessitate an alteration to fees as they are currently set. We are hopeful of having the Chief Programme Analyst from the New Zealand Dairy Board Computer Centre, Mrs Patricia Branscombe, at the Annual Meeting to talk to Members on the proposed programme.

REGISTRATION OF 1978 178 CALVES

Members are reminded that all calves born between the 1st January and the 31st December 1978 are due for registration, and all applications must be in the office by the 30th June 1979 if penalty fees are to be avoided. We are pleased to receive registrations at any time; if we get them progressively we can do them progressively, and you will receive your documents back more promptly.

TATTOOING

When you are tattooing this year's calf drop — 1st January to 31st December 1979 — the year letter to use is 'K'.

Miscellaneous

BEEF COMPETITIONS

We have proved beyond doubt that our cattle can perform as well and better than any others in beef competitions. Last year those breeders who entered animals had their own reward with placings in competitions up and down the country.

Support your breed and your local A. & P. Association or Meat Companies, by participating in a competition this year. In a past issue I suggested that if each member selected and raised but two or three steers for competition standard, it would amount to a very impressive line up of animals.

The Society will again, this year, award a \$50 prize to the best Simmental Cross carcass in a meat competition in a Club area. If there is more than one competition it will be the best of all entrants. Clubs should establish what competitions are in their areas and follow up to see what steers have been entered and how they were placed. Most importantly let us know who won and send a copy of the competition sheet into the office.

Footnote: The Meat Producers Board have just advised us that the 'on the hook' class in beef cuts competitions will be divided into two sections as follows:

Class I 200 kg and over — cattle with no more than 2 permanent incisors.

Class II 300 kg and over — cattle with no more than 6 permanent incisors.

This removes the 300 kg limit on Class I animals.

SIMMENTALS GAIN PLACE AT FEILDING

Neil Barnett did good work for us at Feilding recently, when he took three placings in the Hooks competition at the Feilding A. & P. Association. In the lightweight class he took sixth place, in the heavyweights second and fifth. His second place was taken by a steer that dressed out at 408 kilograms at 2½ years in competition to 3½ years traditional cattle. The recent changes in the Meat Board judging criteria probably cost him the coveted first place, but he did well in consideration that there were but four Simmentals in the seventy six entries.

In Feilding other breeders have also enjoyed success at local sales. H. L. McIntyre sold fifteen, thirteen month old steers which killed out at an average of 200 kilograms.

The Hocking Estate received bullock price for 2½ year steers. Generally breeders are receiving prices for their cattle that are equivalent, or better, than traditional cattle that are a year older.

NORTHLAND WEANERS RS SELL WELL

Jim Mackey of Northland showed what Simmental calves can do when he sold four month old three-quarter and seven-eighths bred bull calves at a Northland Sale at \$81. Nearest rival was a Friesian weaner at eight months of age that brought \$71. Average price for the Sale was \$56.

1979 NATIONAL SALE

Members have been advised that this year's National Sale is to be held in Timaru on Wednesday, 16th May. As one of the only venues with unled facilities at the present time it was chosen in favour of Christchurch where only led cattle can be sold. We are hopeful that yards for unled cattle will be established in Christchurch over the next year. It has an excellent selling ring and is proving popular as a selling centre because of its easy access for those involved.

NORTH ISLAND SALE

Due to the extremely high cost of inter-island transfer of cattle, it has been deemed necessary to hold a sale in the North Island as well as the National Sale in Timaru. The North Island Sale will not be sponsored but will have much the same requirements and criteria as the National. The event will be held at Claudelands in Hamilton on WEDNESDAY, 27th JUNE. Call for entries will be made to North Island Breeders in the near future.

FUTURE SALES

The Sales Committee has decided that the National Sale will continue to alternate between Islands. Each year, however, there will be an alternative sale in the Island not hosting the National. A move is being made to schedule these two events within the same week each year at about the same time so that we build up a set pattern of events. Negotiations are to be made with the Stud Stock Firms to formulate suitable dates.

OTHER SALES

By the time this issue is printed a large sale of sixty purebred cows will have been held in Canterbury at West Melton. This herd is the base herd of Cord Cattle Genetics, an Australian based firm who have agisted these imported cattle in New Zealand for a number of years. The cows have all been ovum transplanted and their numerous progeny exported to Australia either 'in utero' or as calves. Cattle Genetics are winding down their activities in New Zealand and are disposing of this herd. It is hoped that many of these excellent animals will find their way into members' herds in this country.

Messrs Marshall and McElwee of Marton who are going out of Simmentals will hold a dispersal sale at Tutu Totara on the 26th of April at 1.30 p.m. Ten purebred cows and eight purebred bulls will be offered together with eighty odd graded animals presenting an opportunity for members to increase their present herds.

Comment: It has been voiced, 'why are people disposing of these cattle?' If you look at farming as a whole you will see movement at all times, farm sales, stock dispersals, changes of operations — it is endless and predictable. One thing is certain however, if an article for sale is good it will be sought after.

NEW TROPHY FOR CANTERBURY

Donated by well known Canterbury breeder Mrs J. C. Hall, the 'Pendeen Challenge Trophy' will be competed for at the Canterbury Show this year.

A beautifully designed and crafted piece of silverware originating from Holland in the late eighteen hundreds, this trophy will become a most sought after award. The Society is most grateful to Mrs Hall for presenting this trophy.

It was she who won the Supreme Champion award with her heifer 'Pendeen Gretel' in the first year of competitive showing of Simmentals in New Zealand at the Royal Show in 1977.



THE PENDEEN TROPHY

OVUM TRANSPLANT — BLOOD TYPES

With the reduction in numbers of ovum transplants and the increasing costs of collecting and processing blood samples, it has been decided that this requirement will be dropped. This move will be relative to New Zealand based cattle *only*. Any animal born from ovum transplant which is sold for export to Australia, will still have to be blood typed and parentage verified as it is a requirement of the Australian Association.

In general terms ovum transplant calves need not be blood typed, but breeders or subsequent owners must be prepared to meet requirements and costs if they export the animal.

HOW NEW IS NEW

Our Breed and other recently imported European Breeds are often referred to as 'New Breeds'. Hopefully we have buried the name in our own ranks. Recently, while looking through an old family photograph album, I came across a print taken in Naples in 1908 — walking down one of the main streets was a man leading five very large Chianinas! More recently I received a photograph of a Simmental taken over ninety years ago. Both Breeds looked exactly as they look today. Nothing 'NEW' about them.

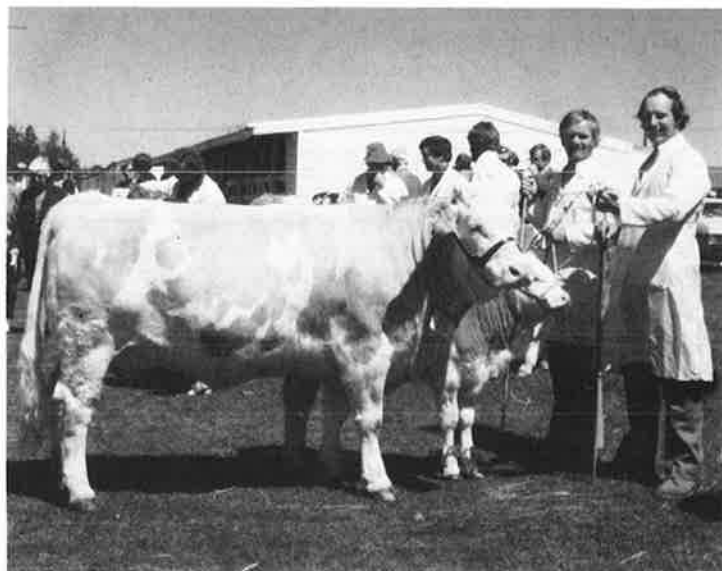
SOUTH PACIFIC SIMMENTALS

**Supreme Simmental Female
Royal Show 1978 •**

**Second All Breeds Beef
Export Class (36 Entries) •**

**Top Quality Young Bulls
For Sale This Year •**

Visitors Welcome •



Enquiries Phone:

M.E. COWAN • Otewa 888

I.W. SMITH • Glen Murray 466

THE GHOST HERD IN THE SKY

The stud breeder at the Royal Show was full of confidence. His bull was a 'cracker' and he knew it; so did the others in the breed. A few slicks of the brush, a pat on the rump and he retired to the bar for a quick snort before judging. He had just lined up his second drink when a steward rushed in and beckoned him in some agitation — "The bull; come quickly," he called. He arrived at the cattle barn to find his pride and joy had jumped the partition and in doing so had done himself mortal damage. While he watched helplessly, the bull expired.

Devastated, he departed the Showgrounds to his favourite bar and drank himself into semi oblivion. In the small hours of the morning, he weaved his way home stricken with conscience at leaving the bull alone and at what had happened. Home, his remorse was terrible. He slumped at his desk, reached for the telephone and rang God to pour out his troubles. God advised him he had good and bad news for him. The good news was that the bull had arrived in Heaven and was much admired by St. Peter who thought he might enter him in the Spring Show — the bad news was that St. Peter would like him to lead the bull in the Grand Parade.

FOR SALE

Four Hereford base halfbred cows (by Scottish Pride) were three-quarter calves at foot.

Three heifers and one bull calf by Scottish Gerald.

A good group of cattle. Enquiries to Allen O'Donnell, Phone: 892 Sefton, North Canterbury.

FOR SALE

One seven-eighth and seven three-quarter heifers (all in calf) are for sale in the PLEASANT POINT area. Anyone who may be interested in these cattle is asked to contact ALLAN IZARD, 'Meadowvale', Totara Valley, Pleasant Point. 'Phone Pleasant Point 362 (through Timaru), South Canterbury.

MANAWATU AND DISTRICTS CLUB

On Monday, 5th March, over sixty people took opportunity to visit the Lands and Survey property at McKay's Crossing just north of Paekakariki on the West Coast of the North Island. On view was a large collection of cattle, Simmentals, Charolais and Angus and visitors were given an interesting and objective address by John Allan, Field Superintendent of the Department and his property Manager, Joe Plunket, on what they were doing with the three breeds.



Youngest cattle hand, Joshua Barnett, son of Neil and Deriann of Halcombe, Manawatu.

The Simmental Herd, which has been established on the eighteen females imported direct from Germany in 1974, now numbers nearly a hundred and has within it some excellent cattle. Some of the original cows showed a few foot problems but it must be borne in mind that these cattle spent the first fifteen months of their lives in stable-type conditions and none had put foot on pasture as we know it until their release from quarantine in New Zealand. The cows have also spent a large proportion of their time since arriving in New Zealand in semi swamp land which does not assist hoof correction or structure.

Visitors were provided with lunch by the Department and many stayed on to re-appraise the cattle and discuss various aspects until late in the afternoon. The Department is hopeful of putting Simmentals into the commercial situation in hill country and with their facility to record progress this will be an interesting and worthwhile exercise.

The Manawatu and Districts Club, through this column, takes the opportunity of thanking the Department of Lands and Survey and its Staff and all those who worked hard to set the day up. Visitors came from Hawkes Bay, Dannevirke, Pahiatua, Blenheim, Nelson and the surrounding area.



Visitors on inspection at Department of Lands & Survey property at Paekakariki.

NOTE: For the Secretary, this Field Day was a more frustrating event. With three other South Islanders, it was planned to fly up and back on the day in a light aircraft. Fog precluded departure at an early hour and the alternative national transport system was immediately enlisted. Councillor Rod Cox missed his flight by one seat on an unusually full aircraft from Timaru. The Secretary sat through three departures without success and eventually retired to the Office. Fog had delayed aircraft in the South, the Picton Ferries were on strike and a large surf carnival in Christchurch over the weekend resulted in a shambles at Christchurch Airport which took twenty-four hours to overcome. The weather at Paekakariki — fine!



Bulls inspecting people after lunch.

Club News

SOUTH CANTERBURY HOLD A FIELD DAY

Members from the South Canterbury area (and one from South Otago) met in the Peel Forest area just south of the Rangitata River for an afternoon Field Day early in March. A visit was made to three properties in the area, after which members moved to a country restaurant for their Annual Meeting followed by a dinner.

The first visit was to Mr John Thatcher's property where with his son Evan, six hundred acres of excellent flats running up to the foothills are intensively farmed in cropping and sheep.

The hundred or so cattle are virtually all Simmental infused, and Evan Thatcher was quick to point out that they are run in conjunction with the property as a whole with no special treatment. The herd was established in 1973 using AI over Herefords, and has now reached three quarter status which may seem slow, but mainly due to a most interesting management technique. All heifers in this herd at first mating are put to an Angus bull and the calves seen from such a mating were most impressive in size and type, illustrating again the advantage of hybrid vigour coupled to the milk factor of the Simmental. Mr Thatcher's theory in this respect, is that he can safely mate younger heifers without threat of calving problems and still get a vigorous calf. The older cows on display were second calvers, and had with them a good line of three quarter calves all by a Tattenhall Amendment bull from the Blythe herd of R. G. Macdonald.

Mr Dave McLaughlin of the C.F.M. briefly discussed what he as a buyer looked for in a marketable steer. His criteria was good top line, length and depth with not too much brisket. In commenting on the breed he felt that the ability to produce meat without becoming over fat was a strong attribute in its favour. One member asked if as a meat buyer he would be prepared to assist Breeders in selection of steers for beef cuts competitions. Mr McLaughlin said he would be pleased to assist, and it is a worthwhile comment that other members in other areas might consider with their own buyers.

Mr Thatcher has liking for uniformity in colour and for this reason has used only Hereford base in his grading programme. While making a departure from this objective with his black bull it must be considered that he does not retain the progeny.

From Mr Thatcher's property the group moved further up the road to Peel Forest Station, a property of historic interest and endowed in superb trees planted in the district's first settlement. Run by Mr Simon Martin and his family, Peel Forest runs Simmentals in the true commercial sense into which progression must be made by the breed. Paddocked close to the homestead was a sizeable mob of Angus cattle amongst which were a considerable number of first cross cows and with their second cross calves at foot. Running in this mob was an impressive three year dark red Simmental by Scottish Patron. His progeny showed size and type alongside their associates of the straight traditional. Mr Martin was unsure of the milk production of the first cross cows but this will be assessed by the finish of his calves, and the

LEVELS SIMMENTAL STUD

EST. 1971 HERD N° 3



**Welcomes You to Timaru for the 1979 National Sale
and Invites all Visitors to Inspect the Herd**

Enquiries welcome to: RODNEY COX, THE LEVELS, No 4 RD TIMARU. TEL. 82-418

Club News

indications were that he will not be disappointed. Visitors were provided with afternoon tea in the homestead's attractive garden, and the Club is indeed grateful to Mr Martin, family and their helpers for the very pleasant interlude.

From Peel Forest members moved on to a diverse inspection, that of the Acland family's deer farm at Mt. Peel Station. Established over the past few years this property now has several hundred deer and numbers are being built up by breeding and live capture to a peak of sixteen hundred. Fascinating to watch, large groups of hinds with fawns at foot were seen as was a large mob of stags. Mating had just begun and four stags were running with one mob of hinds. One, an enormous stag by any standards, had been captured on Mount Peel two years ago. This magnificent beast had a twelve pointer head when caught and has since provided ten pounds of velvet antler each year returning \$1,000 dollars per annum, as well as providing a prolific crop of fawns. It would be interesting to see the size of his 'head' if it was economically possible to let it grow to maturity.

The Management of deer farming is of great interest and a lot has been learnt in a short time. Deer, thought to be unselective in their grazing, have been found to be highly selective, and their ability to minimise their food intake in winter has been found to be environmental only. Feed them and they will eat and prosper, handle them in the broad light of day and they are unmanageable, place them in the semi dark and you can work with them at close quarters.

At the Club's annual meeting Mr Ted Parr was re-elected as President for his third term, and Mr Evan Thatcher took over the job of Secretary from Mr Phillip Kerr who has recently moved to a property in North Canterbury where he will farm on his own account.

Members, wives, friends and our hosts for the Field Day enjoyed an excellent dinner at the Crossing, and afterwards were addressed by Professor Andrew Sykes of



Halfbred cows and threequarter calves on J & E Thatcher's property.

Lincoln College, who spoke on the role of a Breed Society and what he felt its objectives should be. In open discussion at the conclusion of his address he was informed that the Society would shortly start computerisation of its records, which would in time expand to performance recording. This he considered, was a very positive step in the right direction. Professor Sykes also spoke on research on internal parasites in livestock, and how this research was being applied in practical terms to the farming community. An excellent speaker, his address was followed with great interest by those present.

The structure of the Field Day and the meeting was most worthwhile and proved instructive and interesting.



Visitors look at a commercial herd on Simon Martin's property

Club News



HOSTS FOR THE DAY

The Lissaman family of Waireka

L—R: Rob and wife Helen, Mary (Jim's wife), Ivo and Dorothy, Jim, and the third generation.

FIELD DAY AT SEDDON

The Marlborough/Nelson Club recently held a Field Day at the Seddon property of I. J. Lissaman, who farms in conjunction with his two sons, Rob and Jim.

This was the first time an outing had been held in the Marlborough area apart from a display at the Marlborough Agricultural and Pastoral Show in 1978. Close on thirty people attended which was an extremely good muster for the Club which is small and scattered in membership. Members from as far away as Golden Downs in the far west of the Nelson province came through for the day.

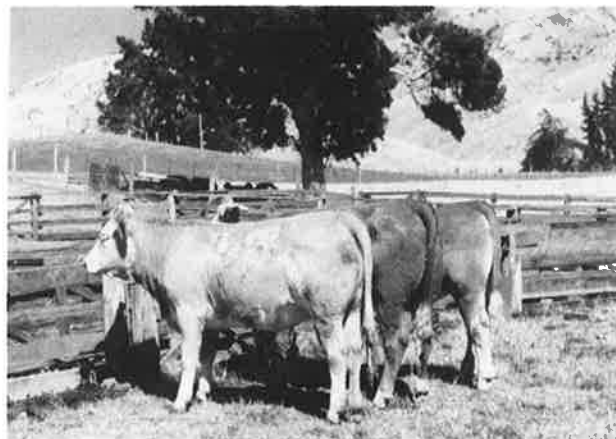
About eighty head of cattle of various grades through to seven-eighths status were assembled and it was of note to see these cattle which had come off the brown hills of Marlborough were presented in excellent order.

Mr Oakleigh Osborne, well known and successful breeder from Canterbury, travelled through with the Secretary from Christchurch to talk to the assembled members and visitors on his assessment of the breed and the cattle displayed. He spoke of the success of hybrid vigour in cross breeding and how, in his opinion, that the initial crosses produced the most impressive response, a fact borne out by many overseas authorities. He went on to discuss individual animals that were presented in groups for appraisal. In his 'eyeball appraisal', he looked at an animal from astern and from the side — it must have depth and width in the rear view and a good top line and length from the side. The length between the hip and the pin bone is critical. An animal short in this measurement is invariably short elsewhere. He considered the head

measurement had some influence in the overall structure of the animal. Those with short heads tended to be dumpy all round. To build a useful beast you must have a frame to put the meat on. Legs were important if the animal is to move freely. While a certain amount could be gauged on visual assessment, one must not lose sight of the ability of an animal to reproduce regularly the type of beast required.

One interesting point strongly made by Mr Osborne, was on colour in the initial crosses. This is a topic that gets kicked about by every gathering of breeders. In his opinion, it is of no consequence and makes no difference to what the animal is in structure or type. Colour will sort itself out as purity progresses and although there is some prejudice amongst the traditionalists it is underneath that hide whatever colour it is that counts.

Members and visitors also had an opportunity to look at several three-quarter and seven-eighths bred bulls and a small group of steers from which it was hoped to select



Threequarter heifers on Waireka Station.

entries for a local beef competition. The 'Waireka' herd sire, a rising three year Purebred by Ardo Antipodes, depicted a good example of what a bull should be, well fleshed with a clean smooth sideline. He was in fine order considering he had just completed his annual round.

It was good to see representatives of the Stock and Station Agencies present some of whom had not really had any involvement with our cattle before. Mr Rupert Martin of Transport Nelson, spoke briefly on their success with their Simmental cross cattle in the Nelson area which was enlightening and encouraging to those present.

After looking and discussing the cattle, the visitors assembled on the verandah of the Waireka Homestead and Mr Osborne gave a most useful and informative talk on ear tagging and identification which we hope to be able to print in article form in a later issue. The Club then held its own Annual Meeting which resulted in Rupert Martin being re-elected President and Jim Lissaman Secretary. A Meeting of Committee and wives followed to discuss plans for this year's Annual Meeting in Nelson for which it is host, scheduled for early July.

The Club is to be congratulated on a very good Field Day, well organised and well attended. Grateful thanks must be given to the Lissaman family whose husbands and wives all worked hard to provide the cattle, the facility and the food with which we seemed to be continuously plied.



Guest Speaker, Oakleigh Osborne talks on cattle to visitors.



Some of the Cord Cattle Genetics herd.

STOP PRESS

A report on the Cord Cattle Sale, held on Friday 30th March, has just become available. Held under atrocious conditions, heavy rain and bitter cold, it still attracted a very good gathering of over a hundred people. The catalogue of over sixty adult cows sold freely and at what can only be termed as excellent prices which resulted in a total clearance. A few young calves sold well also. The confidence shown in this sale augurs well for the National to be held next month. Buyers came from throughout New Zealand and were in competition with several Australians who flew over specially for the event. A summary of prices is as follows:-

38 P.T.I.C. Cows averaged \$1405.

with a gross turnover of \$53,400.

32 Non-P.T. Cows averaged \$870.

with a gross turnover of \$19,150.

3 Heifer Calves averaged \$1000.

7 Bull Calves averaged \$754.

Most of these calves were barely weaner age.

The top price of the sale was \$3,400 for a Herolf/Polka cow (from twins) in calf to an Extra son and with heifer calf at foot by Mustang. This entry was purchased by the Glen Anthony Stud of Wai-pukurau. Ten cows made \$2,000 or better. The average price for all the adults was \$1,210. In the catalogue were some cows of lower quality and these sold accordingly but all found homes amongst our established breeders.

BOOMER WEANER PRICES AT TE PUKE --

18 eight month old Simmental-cross weaners sold for an incredible \$273 at Te Puke last week. The second cut of 12 from the same mob sold at \$220.

It is of note that last year top weaner prices for Simmental-cross were \$110 for the same age.

NEWS RELEASE

SUCCESS IN BEEF CUTS

We have just received advice that in Hawkes Bay a Simmental/Hereford cross animal was placed first on the Hoof and first on the Hooks in the lightweight class at Stortford Lodge in the Annual A & P Association Competition. The carcass dressed out at 333Kg. Another animal of the same cross was second on the Hoof in the heavyweight class. The entries were on behalf of a Mr Daiken who is a commercial breeder. This is the second year running Simmental have won a 'double' at Hawkes Bay.

In the South Island we have also had success. At the Canterbury A & P Association Annual Competition held recently two Simmental cross steers entered by Levels Farming Company of Timaru (R.N.S. Cox) scored well. One animal was second on the Hoof, Hooks and Cuts Competition and the other was third on the Hooks and Cuts. Both in the lightweight competition. The top steer dressed out at 381Kg and the other at 387Kg at eighteen months. In addition to the placings the entrant was awarded the Pyne, Gould, Guinness Silver Challenge Cup for the entry gaining the most points in the Cuts Competition. Congratulations to these contestants on their success.

▪ SIMMENTAL BULLS ▪

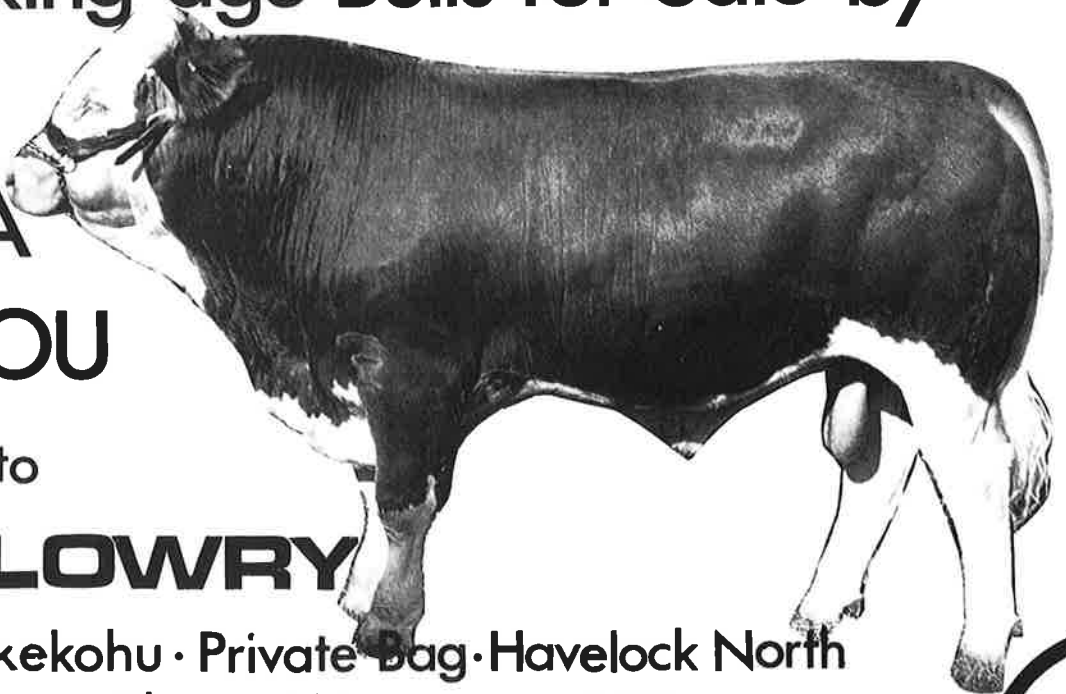
Working age Bulls for Sale by

UELI
EXTRA
ACAJOU

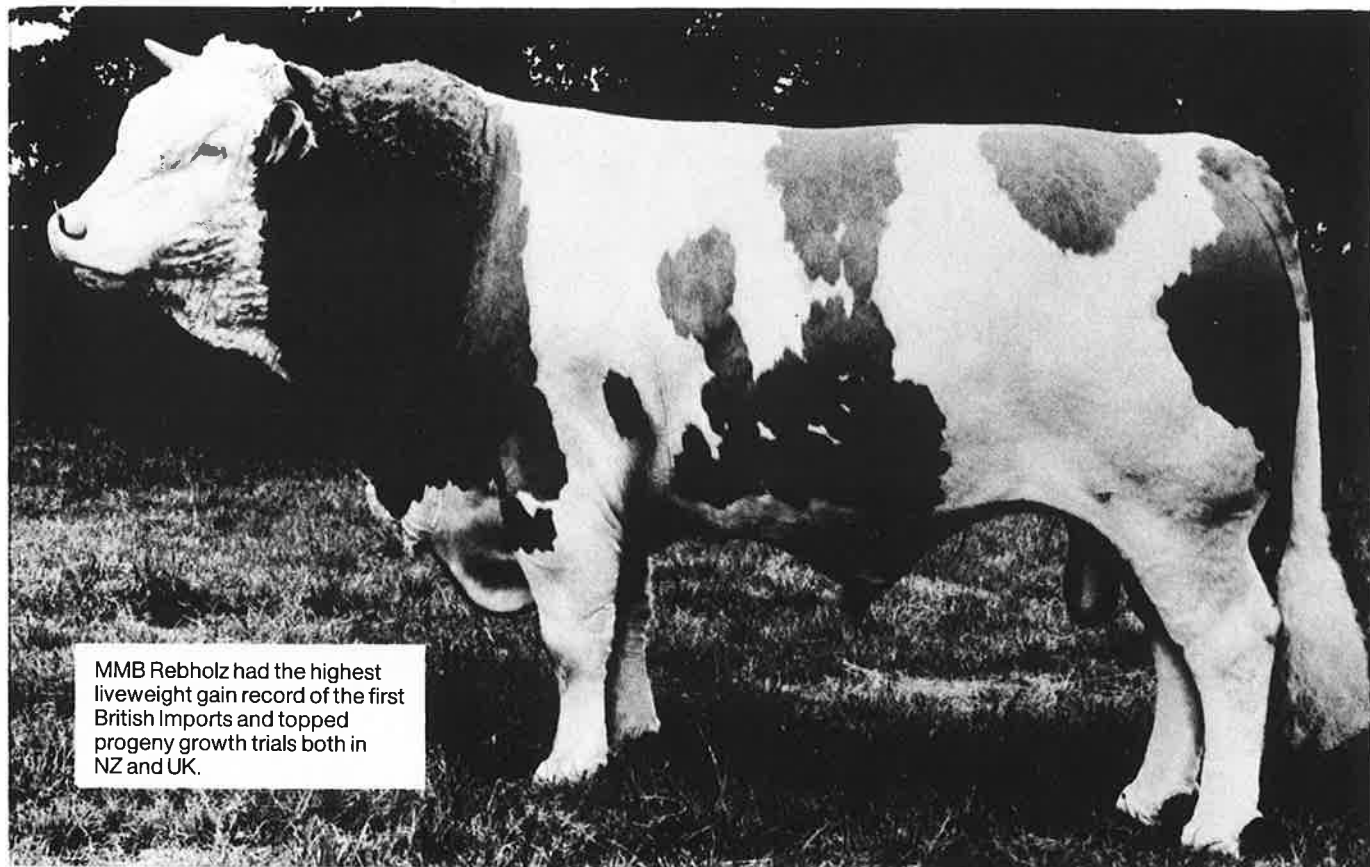
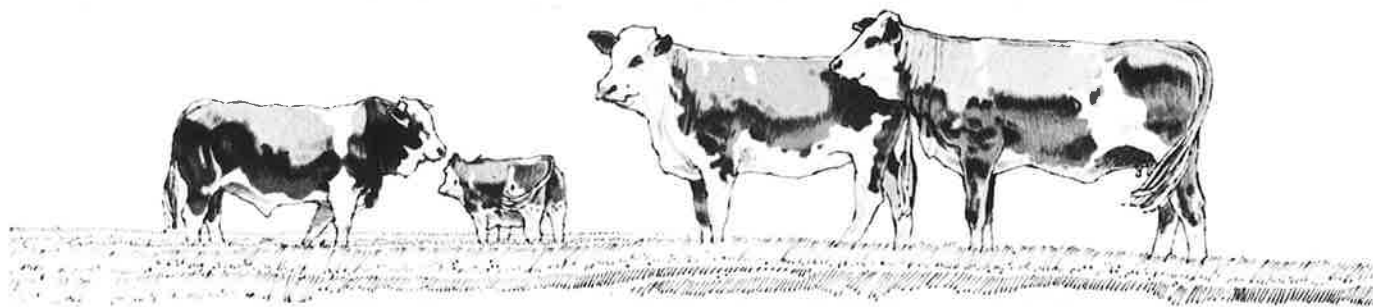
Enquiries to

H.R. LOWRY

Pukekohu · Private Bag · Havelock North
Phone Waimarama 832



BULLPOWER FOR SUPER SIMMENTALS!



MMB Rebholz had the highest liveweight gain record of the first British Imports and topped progeny growth trials both in NZ and UK.

If you select on fact you'll select Bullpower sires.

For progeny performance, MMB Rebholz is the leading Simmental in the country. And Bullpower offer ten other impeccably bred Simmental sires. MMB Langle, Paul, Schock, Seeger and Thierauch: like Rebholz these bulls have been exhaustively progeny-tested. MMB Beta, Halo, Helmut, Hermann and Pilot are currently under progeny test and all have been proved to be easy calving. Prices range from \$4.50 to \$8.00.

The art of the breeder is in blending blood lines. There are no final guarantees when dealing with animals, but Bullpower bulls have the background that offers the greatest possible protection to the user. Your local L.I.A. or usual semen supplier has illustrated information sheets on all Bullpower bulls. If you breed Simmentals you should have them handy.

The best for the next generation.

BULLPOWER

Tiki Cattle Handling Systems and Equipment

are meeting the farmer's needs today

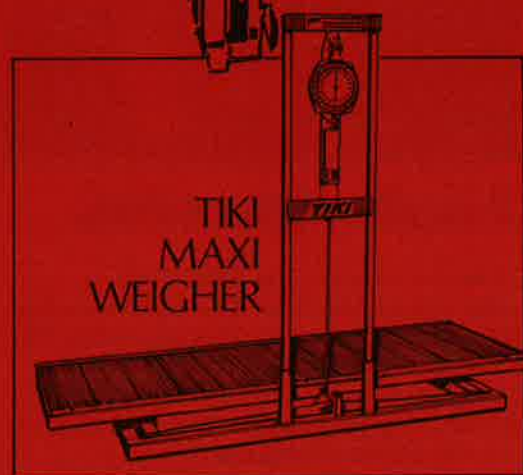
TIKI SQUEEZE CRUSH designed to immobilise the animal for all veterinary work, head work, ear tagging, drenching, dehorning and rear body work such as: pregnancy, diagnosis, Brucellosis testing and mothering up.

TIKI EQUIPMENT FOR ALL TASKS

Tiki Stockmaster - Tiki stockmaster head ball -
Squeeze head ball - Vet gate - Heavy duty sliding race gates
Tiki weighers - Backing gate - Cattle lifter



4232



To: The Machinery Distributor,
P.O. Box 1895, Wellington.
Please send me additional information.

Name:

Address:

CSJ

TIKI