

new zealand simmental



winter issue 1978 number five

1978 NATIONAL SIMMENTAL SALE

THURSDAY 3rd AUGUST.

SALE STARTS 1.00P.M.

MANAWATU & WEST COAST

A & P SHOWGROUNDS

PALMERSTON NORTH



22 PUREBRED BULLS

40 PUREBRED FEMALES

9 SEVEN-EIGHTHS FEMALES

3 SEVEN-EIGHTHS BULLS

**CATALOGUES AVAILABLE FROM STUD STOCK DIVISIONS OF
DALGETY NEW ZEALAND LTD., FARMERS' STUD STOCK, &
WRIGHTSON NMA LTD. (and associated Companies) OR
SIMMENTAL CATTLE BREEDERS', BOX 25100 CHRISTCHURCH.**



THE SIMMENTAL CATTLE BREEDERS'

SOCIETY OF NEW ZEALAND (INC.)

118 VICTORIA STREET, CHRISTCHURCH 1, NEW ZEALAND.

P.O. BOX 25·100, VICTORIA STREET, CHRISTCHURCH. Phone 793·166

Contents

Editorial	1
Feature Article	3
Annual Meeting of Members	4
Annual General Meeting	6
The Council	9
Delegates Meetings	10
People	10
Club News	12
Sales	15
Miscellaneous	16

Advertisers

Levels Simmental Stud
Rutherford Simmental Stud
Bullpower
Scottish Semen Services
Tiki Cattle Handling Systems

Editorial

Four years ago, the main topic of breeder conversation was his halfbreds and his up and coming three-quarter calves. They were all most important cattle. Today the theme is seven-eighths and purebreds and the faithful halfbred has been relegated to little above commercial level and in many cases has made room for its successors by having its head chopped off.

This season has seen remarkable success for the Breed in the weaner markets of the country and more lately in the adult cattle sections. In many cases the cattle that have produced this success are the result of halfbred breeding programmes. The rapidly diminishing numbers in our halfbred register must surely effect the number of commercially viable cattle we can produce. At present there is a strong surge in the introduction of purebred bulls into the commercial sector of cattle breeding but their effect will not be felt for at least two years.

In the meantime, breeders are faced with an escalating problem of space for stock on their properties and it is, of course, the halfbred which is first to be disposed of. When considering the disposal of your halfbred cattle if dispose of them you must, spare thought for selling them to a commercial breeder. Simmental infused cattle are becoming recognised for their productivity and a halfbred cow is a readymade package deal for the commercial breeder having the already viable maternal milk factor available for production of top quality commercial animals. Those people who have had the foresight to obtain good halfbred stock to supplement their commercial herds are in a position to capitalise on what promises to be a rising beef market.

Spare a thought for your halfbreds. They are a worthwhile asset in any commercial system.

Office Staff

Ian S. Johnstone
(Society Secretary)
Mrs. Jocelyn Gilchrist
Mrs. Nonie Childs
Mrs. Ann Booth
Mr. Len Walker

Council Members

President: R. H. Kerr, Harlau, Salisbury, R.D. 2, Timaru.
Vice-Pres.: R. N. S. Cox, The Levels, R.D. 4, Timaru.
Councillors: W. Gut, R.D.29, Kaponga, Taranaki.
G. D. Locke, Gordonton Road, R.D. 1, Taupiri.
R. G. Macdonald, P.O. Box 20, Kaiapoi.
J. R. Sutton, Waihaorunga, R.D. 7, Waimate.
E. W. Turrell, Kaituna, R.D. 2, Christchurch.

LEVELS SIMMENTAL STUD

EST. 1971 HERD N° 3



AN ESTABLISHED PUREBRED FEMALE HERD OF VARIED BLOODLINES

PUREBRED AND GRADED STOCK AVAILABLE

Enquiries welcome to: RODNEY COX, THE LEVELS, No 4 RD TIMARU. TEL. 82-418

'RUTHERFORD' SIMMENTAL STUD

Redwoods Valley Nelson

INSPECTION WELCOME

Our Farm Manager Rupert Martin (phone RDV 744 through the Nelson exchange) cordially welcomes your inspection of this Rutherford Simmental Stud Herd which is one of the largest grading-up herds within New Zealand.

Your enquiries are welcomed and inspection can be arranged to suit your requirements.

A LIMITED AMOUNT OF SEMEN IS AVAILABLE FROM
SOME OF OUR STUD BULLS, ON APPLICATION

'Rutherford' Simmental Stud Farm

Redwoods Valley, Nelson

Postal Address: Richmond R.D.1, Nelson

A Division of the TNL Group Limited



Some Suggestions on the Preparation of Animals for Entry in Beef Competitions

(A Contribution by R. G. Macdonald)

Preparation of steers for Beef and Beef Cuts competitions should start early and requires some forward planning. Under the Meat Board's new rules and judging system, which became operative this year, two classes are available:-

Class 1 — 220 — 270 kilos

Class 2 — 270 kilos and over

Cattle over 24 months are not eligible for Class 1 and cattle with more than four adult teeth will be disqualified from both classes.

This means for most people who are finishing Simmental cross steers that Class 1 is for 18 to 20 month old cattle and the open section is for 2½ year old steers.

Crossbred steers which have been done really well throughout will kill at better than 270k at 18 months. I find that cattle of this age and weight kill at around 56% of their live weight and that is weighing straight out of the paddock without starving, i.e. 480k live weight = 268.8 carcase weight. This is the ideal weight for entering in Class 1.

If your cattle have done really well you could have steers up to 550k live weight which will kill at just over 300 kilos. These top 18 months cattle are the ones that should be held for Class 2 the following year when, with good management, they should kill in the vicinity of 450k, still grading P1 and be strong contenders for the open class, both on the hoof and hooks.

For this exercise it is preferable to select steers with at least ¾ Simmental blood. If your cross is derived from one of the British beef breeds, and the amount of Simmental blood is ½ or less, the chance of laying on too much fat in this second year increases and points will be lost through exceeding the ideal fat cover (6mm to 11mm) over the ribeye area and in distribution. It may even exceed the limit for P1 and be downgraded to G which eliminates it from the competition.

The system of judging the hook and cuts section should be understood by the competitor to aid him in making the best choice for entry. All carcasses must grade P1 and the first 10 are selected by allocation of points on the following basis:-

Area of ribeye	30
(130 sq cms and over gives maximum points)	
Thickness of fat over ribeye	60
(maximum points between 6mm and 11mm)	
Distribution of fat	10
Maximum points	100

These 10 carcasses then have one side boned out and the percentage yield of meat calculated. This percentage is then doubled, e.g. 60% yield gives 120 points

The value of the carcase on the export schedule for its class is then added, each dollar being one point.

e.g. 400k @ 80 cents = 320 points

Maximum points for a steer of this weight and yield

Weight, which is value, is where the majority of points are allocated. So when selecting, weight must be your prime objective.

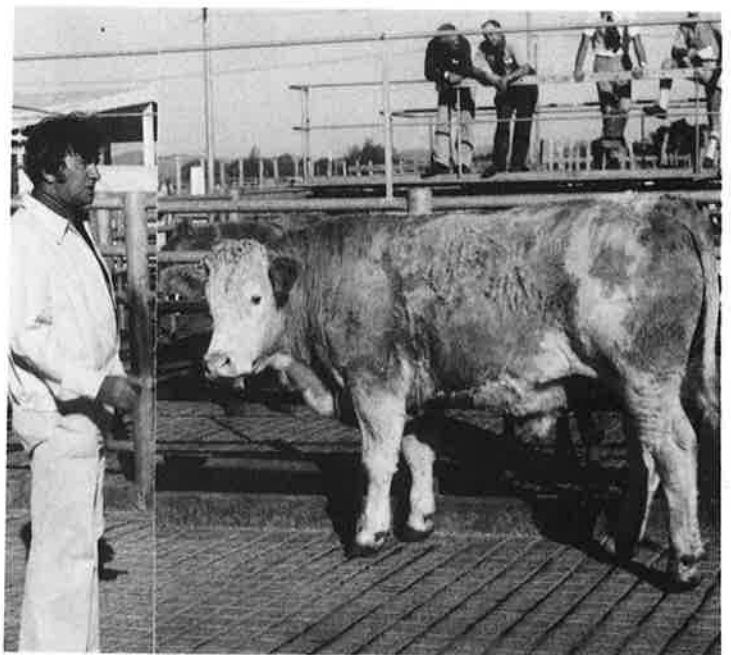
Look for a long animal with good fleshing. He should stand with feet well apart and have well muscled hind-quarters. Ribeye area is an important factor to get into that first ten and can easily be evaluated visually or by feel.

If an animal is particularly good in this area the eye muscle will bulge up above the level of the backbone. If it is weak it will slope away. A very level, flat back is not something to be aimed for as it usually indicates too much fat.

To evaluate fat cover look for a clean brisket and a cod that is not over filled. Anything with signs of lumpy fat around the tail is definitely out.

The ability to grow to big weights without exceeding the fat cover tolerance is one of the main attributes of the Simmental and other European breeds and makes the selection of competition cattle very easy. It is most unlikely that ½'s or ¾'s will get over fat up to 2½ years. On the other hand, a poorly done animal may well not carry enough condition and be downgraded to L1 which also eliminates it from the competition.

Plan ahead. Do your cattle well and get the weight into them, but most important, keep those top steers back for your local competition. It is hard to win or promote well with your second best.



Alan Radburn of Kereru Station, Hastings, with his winning entry in the Hawkes Bay Agricultural and Pastoral Association Beef Competition. The 30 month steer won both hoof and hooks sections, a great achievement for the Breed.

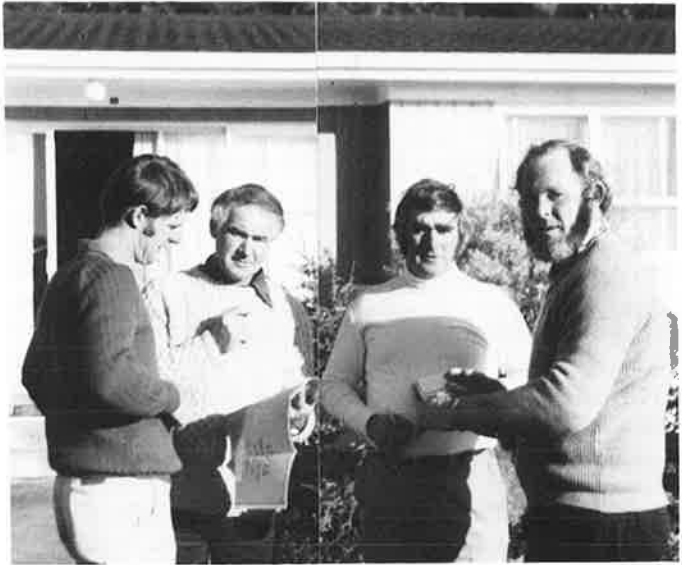
LETTERS TO THE EDITOR

We will accept letters for the Magazine from Members. If you wish to write please keep your literary efforts short and to the point. Letters should be of Breeder/Member interest. As with any publication, we do reserve the right to decline publication.

Annual Meeting of Members



Lynne Sloane and Mrs. Gwen Houlbrooke, two of the organising Committee for the Annual General Meeting.



Discussion group, Jim Sutton, Jim Houlbrooke, Robin Lowry, Terry Sloane.



A group at the Field Day.



Alan Nisbet addresses Members at the Field Day at Kaikohe. On his right is Hilel Korman owner of the property.



Bound for Russell, Jill Lowry, Gail Johnstone with Rodney Cox and Robin Lowry.



Re-elected President, Dick Kerr, with Councillor Ted Turrell at the Waitangi Wharf.

Annual Meeting of Members

THE ANNUAL MEETING 1978

In its seventh year, the Annual Meeting of the Society once again drew a large crowd of people from virtually every area of the country. Credit for the greatest distance travelled must go to Dr & Mrs Bishop of Geelong, Australia, who arranged a visit to New Zealand to coincide with the Meeting. Over eighty people flew or drove in to Paihia in the far north of New Zealand on Tuesday, 27th June for what proved to be three (and in some cases more) most enjoyable days. The first evening was spent informally meeting new people and renewing associations from past years and the planned programme officially got underway at 9 a.m. on Wednesday morning.

Buses picked up visitors from the Waitangi Hotel, centre for the Meeting, and started out on what proved to be a most interesting and diverse Field Day. The bus drivers, both from the surrounding district, knew their area and its history thoroughly and throughout the day kept their passengers informed on all points of interest along the way. Calls were made at historic places such as the Mission House at Waimate North, one of the first inland places inhabited by Europeans in the settlement of the country. In the same area the first wheat was grown and the first flourmill established. The whole area is steeped in history and many of the surrounding low hills still show clearly the excavations and fortification ramparts created by the Maoris in defence of attacks from European troopers. Stone fences still stand in many areas, neat and true as a reminder of the Dalmatians who built them after coming to the area in search of Kauri gum.

Highlight of the day was the visit to the Kaikohe property of Mr and Mrs H. Korman. Mr Korman, now a retired businessman of Auckland, purchased the property some 12 years ago when only some 800 acres were developed. Today it consists of 2,500 acres of first class pasture carrying 5,000 sheep and near 1,000 cattle many of which are Simmental infused. Under the able management of Mr Alan Nisbet, the property illustrates graphically the great potential of the Northland area. A large group of Simmentals had been assembled for the day representing both graded and pure cattle and members took keen interest in an address given by Mr Nisbet on his management and experience with the breed.

The local Maori residents, under the leadership of a well known 'Hangi' expert, prepared a traditional Maori meal cooked in covered earth pits filled with pre-heated stones. The result was superb — pork, poultry, beef, kumara, potatoes, pumpkin, all cooked to perfection and served in the Woolshed which had been turned into a temporary lunch room. Refreshments to 'warm the inner man' on what was for the area a cold day, were kindly provided by Mr & Mrs Korman. It was of note that although the day was doubtful from a point of weather, no rain actually fell that curtailed activities.

After lunch the tour left to visit further points of interest in the district cumulating in a call at the Keri Keri Stone Store and Museum House and a visit to a citrus orchard where many people bought large quantities of mandarins, kiwi fruit and tamarillos, at prices that were unbelievable in comparison to those charged in city shops.

Buses returned people to their accommodation shortly after five o'clock and although the evening was designated as free a large proportion of the visitors dined at the Waitangi Hotel to enjoy a concert by the internationally renowned Negro group the 'Inkspots' who will be remembered by many in the 1940s for such numbers as 'Up a Lazy River'. On tour in New Zealand from America, the group were having a few days' holiday in the Bay of Islands and staged two shows at the Waitangi Hotel. Although a second generation, their rendition of the group's original songs that took them to fame was perfection.

On Thursday morning Members met for the more formal proceedings of the Annual General Meeting which was attended by fifty-nine people. (A report on the relevant points of this Meeting appears separately in this Issue.) The Meeting concluded at midday and Members dispersed in many directions to occupy the afternoon in sightseeing around the local area.

Russell, one of the first European settlements, is but a short distance away from Paihia by launch and many people spent the afternoon looking and learning about New Zealand's early history in this pleasant, small township. The first Church in the country still stands and is in regular use. Bullet holes in the walls date back to the days of hostility between the settlers and the Maoris.

Paihia, the small centre on which Waitangi Hotel, The Treaty House, etc. is based, has a normal population of around one thousand. In summer it reaches 25,000 which gives some idea of the area's popularity.

The evening was occupied with the Society's cocktail party and annual dinner and although much has been said of past dinners and parties that 'they were so good it would be impossible to better them next year', this one rated just as highly as any previous one. The chefs at Waitangi Hotel had gone to tremendous trouble to produce food superbly presented and of great variety and quality. In talking to the catering staff prior to the dinner, I asked them how long it took to set up such a function. 'Oh most of the day for all of us,' was the casual reply! Throughout the dinner and until the 'early hours' an excellent band played music for dancing and easy listening.

The organising Committee for the 1978 Annual General Meeting, Geoff Palmer, Terry and Lynne Sloane, Jim and Gwen Houlbrooke, Stan and Gae Timperley, must be warmly congratulated for their foresight, their planning and great attention to detail which made this Meeting such a resounding success. Although I know they were sadly disappointed at the number of cancellations received at the last moment, their reward was in the great enjoyment that was so obvious amongst the many people who attended. Such enjoyment can only be achieved by thorough organisation. Our 1978 Annual Meeting must be rated as one of our best.



Annual General Meeting

THE ANNUAL GENERAL MEETING OF MEMBERS 1978

Held at the Waitangi Hotel in the Bay of Islands on Thursday, 29th June, Mr R. H. Kerr presided over fifty-nine Members who represented virtually every area in New Zealand. Over fifty apologies were recorded which shows great strength of interest in our affairs.

The Minutes of the Annual Meeting held in Christchurch on the 26th June 1977 and the Minutes of the Special General Meeting held on the same day which had been circulated, were confirmed and adopted.

Mr Kerr, in presenting the Annual Report and Statement of Accounts, expressed satisfaction at the current situation but stressed that the income of the Society would reduce over the next twelve months as a result of the reduction in exports to Australia which would follow the winding down of ovum transplants on behalf of Australian Members with cattle agisted in New Zealand. This, allied with a reduction in Membership which had been predicted for some time, would reduce the cash flow and would call for diligent administration by the Council. The Society was lucky to have substantial investments and these monies would be carefully retained. In assessing the situation, he was not predicting a crisis but stating factually what would evolve. The Society was sound in its administration and its Membership and would continue to thrive. The breed was finding acceptance in the commercial sector of the industry which was healthy progression. The Annual Report and Statement of Accounts were adopted on the Motion of Mr Kerr seconded by Mr Cox.

Mr Kerr then reported on the 1978 Election of Councillors. Three nominations were received for the three vacancies on the Council and Messrs Cox and Sutton were returned while Mr G. D. Locke from the Waikato, was duly elected as a new Councillor. Mr Kerr, who did not seek election for a further three year term, was re-appointed to the Council under Rule 14m to fill the vacancy created by Mr A. R. Marshall's resignation. Mr Kerr's term on the Council will be for one year only.

Following the pattern implemented last year at the Annual Meeting, Mr Kerr asked the Chairman of the Council Committees to present their Annual Reports:

PROMOTION (R. N. S. Cox)

Mr Cox expressed pleasure at the considerable success that the Promotion Committee had enjoyed over the year. Clubs had now become well established and their effect was showing in successful promotions at Shows, meat competitions and weaner sales. Clubs were becoming self motivating creating district interest and a communication medium for area Members. The Promotion Committee had spent over \$13,000 in the last year on Club and National projects. Regular visits had been made to Club areas by the Secretary and various Councillors. A Delegates Meeting attended by two Members from each Club area had been held in both the North and South Islands. Such Meetings would be held as an annual event.

Perhaps the most significant achievement in the Promotion year, was the winning of both the 'On Hoof' and 'On Hooks' classes at the Hawkes Bay Agricultural and Pastoral Association Hastings Beef Competition. A three-quarter bred steer entered by Kereru Station took the 'double' for the first time in the breed's history in the country.

Mr Cox emphasised the need to promote the breed at every opportunity. He also called for self-promotion from the individual Member. If each Member could get one bull out to fifty cows in his area it would produce near 30,000 Simmental infused calves and this must make an impact on the market. He urged Members to participate in the area Clubs' activities. They are structured for Member use.

In conclusion, Mr Cox thanked Members of his Committee for their efforts and support over the past year.

TECHNICAL (J. R. Sutton)

Mr Sutton, in presenting his Report, advised that the Committee's main project this year was to get the Sire Reference Scheme underway. Already some 900 cows had been offered and more were expected. The Scheme offers three overseas bulls and two New Zealand bred bulls and breeders will obtain semen at \$3 for the former and \$1.50 for the latter. Breeders in the Scheme are asked to use at least two bulls over a minimum of fifteen females each. Where a breeder has limited numbers of cows, some flexibility could be arranged. Mr Sutton expressed the Technical Committee's appreciation to the response that had been received. If anyone who had not put cows forward and now felt they would like to, he urged them to do so.

The Technical Committee will meet within the next week or two to finalise the mechanics of the scheme and participants will be sent further detailed information.

The other main interest of the Technical Committee at this time is one that has been hammered endlessly by Council and committees for several years and this time we feel some progress might be made. The Society, as all Members are aware, is most anxious to computerise records and set up a system that will allow us to compare progeny and performance. The Government established National Beef Improvement Committee has recently been restructured and is now under the control of the New Zealand Meat Producers' Board who are keen that a computerised scheme will be introduced using the Dairy Board Computer in conjunction with Beefplan to produce a system that will be suitable to all breeds and their requirements. The implementation of this scheme will be one of the major projects on the Technical Committee's calendar. Without a satisfactory system, there are so many things which should be done that we cannot do. It is of great importance that we do what we can to get things moving.

SALES (I. S. Johnstone)

Mr Macdonald unfortunately could not be at the Meeting and the Secretary was asked to report briefly on the National Sale which is scheduled for the 3rd August

Annual Meeting of Members

at Palmerston North. Catalogues have now been distributed to all Members and arrangements have virtually been finalised. This year for the first time entries will be judged before the parade. This has proved of interest at other breed sales and has long been protocol overseas.

Our Judge this year will be Mr Ivan Grieve of Hastings, a Senior Stock Buyer and a man held in high regard as an appraiser and judge of cattle. It is hoped that the recent upturn in the beef and cattle industry as a whole will be reflected in the prices obtained at this Sale.

APPOINTMENT OF AUDITOR

The Members present approved the appointment of Mr J. G. Strack of Christchurch as Auditor of the Society Accounts on the motion put by Mr Lowry and seconded by Mr Cox.

NEXT ANNUAL MEETING (1979)

The Annual Meeting alternates between Islands and an invitation for the 1979 Meeting was issued and accepted from the Marlborough/Nelson Simmental Club. The final decision as to whether this Meeting be held in Blenheim or Nelson was left to the Council to decide after discussion with the Club Committee. Dates while not being finalised, would be approximately the same time as previous years.

ANNUAL MEETING 1980

The Secretary had recently attended the New Zealand National Field Days now a premier farming event in the South Pacific attended by many thousands of farmers. The Waikato and Districts Simmental Club who actually invited the Society to hold this year's Annual Meeting in the Waikato but stood down in favour of the Northland Club, suggested that the 1980 Meeting might be held to coincide with the Field Days. Put to the Members at this year's Meeting, it was considered a most worthwhile idea and arrangements will now go ahead for reservations. The popularity of the Field Days is such that bookings are made at least a year ahead.

GENERAL BUSINESS

In general business a number of points of note evolved and are recorded as follows:-

Measurement and Recording

Mr O. J. Osborne enquired what progress had been made in implementing Rule 4(a) which called for promotion by measurement and recording. The answer to this question is basically that until we can get a recording scheme there is no way this can be satisfactorily implemented. Cow size and ability to convert were of main concern to Mr Osborne. The Technical Committee noted Mr Osborne's question and would as opportunity became available try and answer it.

One comment made on Mr Osborne's question was that each breeder has his individual requirement on his cow size. Simmentals are a multi-purpose bred.

Herd Testing Subsidy

Mr G. D. Locke asked if the Technical Committee had considered subsidising the cost of herd testing in dairy herds so that some Sire Evaluation could be made.

Mr Lowry advised that to date the matter had been discussed and that the Committee would as a result of Mr Locke's question investigate the matter further.

Lands & Survey Herd

Mr O. J. Osborne enquired what was the state of the eighteen Purebred females brought into the country from Germany by the Lands and Survey and what was the future of these animals.

Mr J. Rodda of the Lands and Survey advised that the Department Purebred Simmental Herd now stood at seventy-four including the original eighteen imports. A commercial evaluation in cross-breeding using commercial cows was to proceed this spring and would involve a Simmental Purebred bull and three other breeds which would be mated with forty cows each. Progeny would be carried through to twenty months of age under controlled management. All animals would be recorded with Beefplan. On future plans, Mr Rodda advised that at a later date there was a possibility that purebred bulls would be placed on other Government blocks. Two two-year old bulls were included in the Catalogue for the National Simmental Sale in August.

The Members present were asked for their attitude towards the involvement of the Lands and Survey in the breed and the fact that they were offering stock for sale on the open market. After some discussion a motion was put by Mr Osborne and seconded by Mr R. Martin 'that participation by the Lands and Survey and Government Departments in all aspects of the Society's Sales and Promotion activities is welcomed'. The motion was carried without dissent.

In discussion on this matter, it was pointed out that the Lands and Survey had the facility, financial backing and the manpower to carry out research normally quite outside the scope of the private individual.

Annual Meeting Bookings

Mr G. D. Palmer, Chairman of the Northland and Districts Club who had organised the Annual Meeting arrangements, expressed concern at the number of cancellations that had been received at very short notice. While he knew some of these were unavoidable, it concerned his Committee as it affected the cost of services and upset accommodation arrangements. He suggested that in future Members be asked to lodge a booking fee with their applications which would be non-returnable except in special circumstances.

The Council noted this suggestion which would be considered when arrangements were being made for the next Annual Meeting.

Herd Inspections

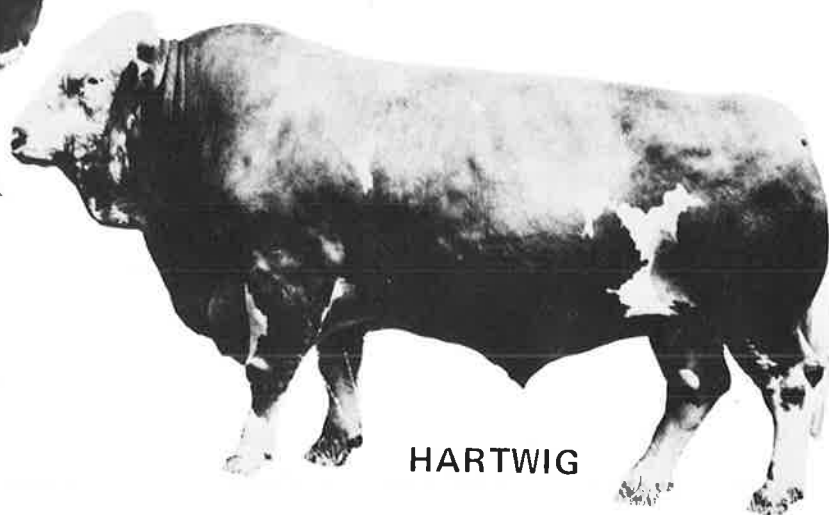
Mr J. Mackey asked if the Society intended to inspect all Members' cattle.

Mr Kerr said that this was not envisaged at this stage. Inspectors were appointed for Society Sponsored Sales and recently Clubs had introduced inspections for local Sales. Through Clubs, Members should be encouraged to appraise each others cattle.

MMB HERMANN...



HERMANN



HARTWIG

**grows more like his father
every day**

32 HARTWIG SONS weighed at auction averaged 612kg at 482 days.

THE FIRST MMB HERMANN SON TO COMPLETE AN OFFICIAL
PERFORMANCE TEST WAS 656 kg AT 400 DAYS

52 kg ABOVE TEAM AVERAGE.

Official Calving Survey: 336 Births only 4 difficult

INVEST IN.... BREEDING,
GROWTH AND
EASE OF CALVING AT.... **\$6.00** per dose

BULLPOWER

Order from your usual semen supplier or write for further details to
BULLPOWER, PO BOX 9006, HAMILTON NORTH

THE COUNCIL

The Council has met twice since our last Issue with a brief Meeting at Auckland on the 27th June to coincide with travel to the Annual Meeting and again on the 29th June immediately following the Annual Meeting at Waitangi.

The 27th June Meeting held at Auckland Airport, covered matters concerning the Annual Meeting and minor domestic matters. Points of relevance are covered in the report on the Annual General Meeting of Members printed in this Issue.

The meeting held following the Annual Meeting on the 29th June, was for the purpose of appointment of President, Vice-President and Council Committees which are reported elsewhere. The first full Meeting of the Council for the Society year will be held in Palmerston North on Friday, 4th August.

COUNCIL COMMITTEES

Finance

R. H. Kerr (Chairman)
R. N. S. Cox
E. W. Turrell
A. R. Guthrey

Promotion

H. R. Lowry (Chairman)
R. N. S. Cox
R. G. Macdonald
W. Gut
G. D. Locke

Technical

J. R. Sutton (Chairman)
G. D. Locke
R. N. S. Cox
W. Gut
H. R. Lowry

Sales

R. G. Macdonald (Chairman)
H. R. Lowry
E. W. Turrell

PRESIDENT FOR A FURTHER YEAR

Mr R. H. Kerr, who has been President of the Society since 1972, declined nomination for re-election at the 1978 Council Elections, as he did not wish to serve a further three year term. However, due to Mr A. R. Marshall's election to the New Zealand Meat Producers' Board and his subsequent resignation from the Society Council, a 'casual vacancy' has occurred. Members of the Council (under Rule 14m) invited Mr Kerr to fill this vacancy which terminates at the Annual Meeting 1979.

Mr Kerr's acceptance of the Council's invitation is welcomed and it is with pleasure that the announcement of his re-appointment as President for the ensuing year is made. Mr R. N. S. Cox, who has until now been Chairman of the Promotion Committee of the Council, has been appointed Vice-President.

DELEGATES TO OUTSIDE ORGANISATIONS

United Breed Society and Royal Agricultural Society

By appointment of the President.

Combined Beef Breeders' Research Committee

J. R. Sutton and G. D. Locke.

RECENTLY ELECTED COUNCILLOR

As a result of the Council Elections held earlier this year, we welcome Mr Gary D. Locke from the Waikato to the administration of the Society. In his early thirties, Mr Locke brings with him a lifetime interest in the land and cattle. Born in Taranaki in a farming family, he has remained firmly within the cattle industry working firstly with the L.I.A. in the Waikato and later with Ambreed in Hawkes Bay. More recently, with his wife and two young children, he travelled extensively overseas being away from New Zealand for nearly three years. During his time overseas he worked amongst Simmentals and saw them in their countries of origin throughout Europe. Back in New Zealand he has lost no time in settling in and is currently sharemilking 250 cows on a property just north of Hamilton. In addition to his dairy herd, Mr Locke is establishing a small herd of Purebred Simmentals. Ultimately he aims for his own property and an established stud. A person of keen involvement in the Waikato and Districts Club, we look forward to his participation and contribution at Council level.



Gary Locke of Taupiri.

Simmental Club Delegates Meetings

People

In April, a Meeting of Delegates was held in both the North and South Islands. Instigated last year, Delegates' Meetings are proving a very worthwhile venture and will continue on a similar format to this year's Meeting.

In an effort to rationalise costing and to provide greater interest, this year's Meetings were held in Club areas and the local Club played hosts to visiting Members.

HAWKES BAY — The first Meeting was held in Hawkes Bay in the Hastings area and two Delegates from all North Island Clubs attended and were billeted amongst Members in the area. Meeting at midday for lunch, Delegates spent the afternoon on a very well organised programme involving a demonstration of boning out a side of beef into consumer cuts followed by a visit to a farm property nearby to inspect entries for the annual Hawkes Bay Hoof and Hooks Competition. Mr Ivan Grieve, senior buyer for W. Richmond Ltd. (Meat Exporters) gave a fluent and forceful address on production of livestock for meat. His assessment was impressive and well demonstrated and his ability confirmed the following day when he judged a Kereru Station steer first on the Hoof which went on to take the Hooks competition under the judging of another man. We are fortunate to have Mr Grieve as Judge for entries in our National Sale in August this year.

After inspecting the competition steers, Delegates moved on to Mr Stuart Griffiths property at Hastings to look at his Purebreds and graded cattle. Mr Grieve again gave an address on what he considered were viable cattle and why. The day concluded with an informal gathering and an evening meal. The following morning Delegates held a more formal meeting at which Mr Rodney Cox and the Secretary outlined promotion proposals and asked for reports from Delegates on their individual areas and ideas on what they considered should be done in the promotion field. (A summary of the results of this and the South Island Meeting follow this report.)

Those who attended the Hawkes Bay Meeting were:— Jim Houlbrooke and Terry Sloane (Northland), Neville Reynolds and Aidan Schumacher (Taranaki), Neil Barnett and John Allen (Manawatu), Gary Locke and Roy Smith (Waikato), Dick Black and Alan Radburn (Hawkes Bay), Robin Lowry (Council), Rodney Cox (Promotion), Ian Johnstone (Secretary).



Ivan Grieve of W. Richmond Ltd (right) talks to Delegates at Hastings.



Ted Parr, on whose property the Delegates' Meeting was held in South Canterbury. The 'pole sitter' is David Stone from Glenray.

SOUTH CANTERBURY MEETING — The South Island Meeting followed a similar format and in the early afternoon Delegates drove out to Mr Ted Parr's property in the Raincliff area behind Timaru to hold a discussion group on Mr Parr's herd of graded Simmentals. An early Member of the Society, Mr Parr has farmed his Simmentals under normal commercial conditions and has placed strong emphasis on performance and is recording all his cattle through Beefplan. At the beginning of the afternoon he gave an address on his management programme, his selection criteria and the results he has achieved. (His property has become well known over the past two or three years for production of consistently top weaner calves.) At the conclusion of his address, Delegates were invited to ask questions and entered freely into discussion on traits, family characteristics and animal conformation. After this discussion, Delegates were taken on a brief tour of the property and afterwards were guests of Mr & Mrs Parr before proceeding to billets with Members of the local Club. A formal Meeting was held in Timaru the next morning and continued through until after midday.

Those who attended the Meeting were:— Mrs Jocelyn Hall and David Stone (North Canterbury), Ted Parr and Iles Baker (South Canterbury), John Robins and Alastair McLees (Southland), Jim Lissaman and John Howie (Marlborough/Nelson), Jim Sutton (Council), Rodney Cox (Promotion) and Ian Johnstone (Secretary).

Summary of Meetings

From the informal and formal discussions held at both Delegates Meetings, the following matters of note were recorded:—

Suggestion — New Zealand film on the breed or an overseas feature film for Club use. Rodney Cox advised that a film had been considered some time ago but production was expensive and it was questionable just how much use could be made of it. Delegates asked that the possibility of a film could be reconsidered. (To be looked at by the Promotion Committee.)

Advertising — It was agreed that the current advertising should be angled at the sale of bulls to the commercial buyer. Rodney Cox stressed self promotion. He asked how many breeders had advertised or used our Magazine for this purpose. One Delegate had advertised frequently in farm periodicals but with minimal response. He considered it very hard to justify. Others commented that they would advertise once they got their herds to Purebred status.

The Secretary suggested that Clubs could consider a collective page for advertising in the Magazine or in Newspapers, etc. in their Club area. One Delegate suggested educational promotion. He also put forward the idea of having someone in each area who was the 'contact' man for the area paper so that notable events are put forward to the paper on a regular basis.

Competitive Showing/Judging — In discussing this subject, it was stated strongly that the appointment of Judges for shows should be carefully handled. We do not want to promote **one** Judge who will become a setter of standards. It was considered they should be commercially orientated. The following ideas were then put forward:—

- promote judging panels at Field Days.
- the society to organise workshops on judging and appraisal.
- Judges should be appointed from outside the breed Membership.

Rodney Cox asked that Clubs put forward their suggestions to Council for consideration. He considered that Clubs should select their own Judges for local area Shows and put forward the nomination for Council approval. In discussing the Meat and Wool Cup Competition, it was recommended that there should be two sectors in this Competition. One for Males and one for Females. As the Competition is set at the present time, it is considered out of balance as bulls are usually mature animals and the female entrants have little chance of competing against them. (The Secretary to write to Meat and Wool on this suggestion.) Delegates considered that in competitive showing the Society should eventually introduce performance criteria as a condition of entry. Mr Cox said this would probably follow once such data was available from our hoped for computerised system of recording.

Breed Standards — A vigorous discussion was held on what should constitute 'breed standards'. At the present time the matter was decidedly open within the breed in New Zealand. One Delegate felt that to set standards immediately set a 'type' that may not be in the interests of the breed. Another comment indicated that what was an acceptable standard would be sorted out in the sale ring — the buyer would set. While no definite conclusion was drawn, it was felt that if standards were to be set they should be loosely structured to allow for variation in breed which was apparent in different areas. The Secretary advised the World Federation was currently looking at standards on an international scale.

Inspections — Mr John Howie of Blenheim felt that once an animal reached pure status from the graded system, it should be inspected. Again discussion was spirited on whether colour other than recognised Simmental colour was acceptable. There were known to be a

number of almost pure status animals about that show most un-Simmental-like colours. At the present time the Council placed no restriction on colour definition leaving it to the discretion of the purchaser.

Meat Competitions — Delegates suggested an article be written for the Magazine on beef competitions and selection of suitable steers. A lot of Members felt inadequate in experience in selecting animals for these competitions. A workshop should be held on selection criteria and this could be included in a Field Day activity. Some advice could also be given on selection of cattle and preparation for showing. Clubs and the Society should look at educational projects for Members. One recommendation to the Technical Committee was that age instead of weight be looked at in Beef Competitions.

Sales — In discussing the National Sale, the Southland Club registered strong disapproval at the venue and most important to them, the date set for this event. They considered it totally unsuitable to the Southland area which is noted for its rigorous winters and said it was virtually impossible to bring animals up to sale standard at that time of year. As a result of the date set at least seventeen Purebreds destined for the National Sale had been withdrawn. It was stressed that the Society should provide a facility to sell pedigree stock at a regular specified time each year and that the date should be set by the Members and not the Stock Firms who had obviously influenced the present Sale date. The Secretary advised he would pass the matter on to the Sales Committee for consideration and reply. It was also recommended that the date and location for the 1979 Sale be organised at an early date.

Visit to Club Areas by the Secretary — It was suggested that where practical a Member of the Club Committee accompany the Secretary on visits to Members in a Club area so that a double contact is made. Some Members do not attend Club organised functions and are not always easily contacted. The Secretary would welcome any Member of a Club Committee to travel with him and will endeavour to work this arrangement where possible.

Club Meetings — Mr Cox suggested that Clubs should consider holding their Annual Meetings around March each year so that Delegates can come to Meetings with ideas fresh from Members. Delegates Meetings will continue to be held.



A good line of three-quarter heifers on Ted Parr's property.

Club Grants/Accounting — It was requested that Clubs pay their own accounts out of the Grants made to them from the Promotion Committee funds. Grants would be made to Clubs but it was imperative that Clubs prepare a budget of expenditure for approval.

National Sponsored Promotion — Rodney Cox advised that the Society sponsored only the New Zealand Royal Show and that any other sponsorship would have to be approved by the Promotion Committee and the Council. The National Field Days would be assisted with but expenditure must be kept within reasonable bounds. The Waikato Delegates asked if the Society would approach the British High Commission Office to see if they would assist with sponsorship.

Handout Material — A discussion was held on handout material. Rodney Cox advised that the Promotion Committee had looked at a full colour brochure but considered the cost too high. Any brochure produced had to be in very general terms unless it was to become quickly outdated. From experience a vast majority of the material issued at Shows ended up as rubbish. The Magazine was being used as handout material and was considered current and comprehensive for those who had genuine interest. Delegates had asked that where possible 'success stories' were included. (Note — this is being done but depends largely on reports furnished by Clubs.) Alan Radburn suggested a small sticker be produced for use by the butchers' trade and supermarkets where Simmental meat is sold or pre-packed. (The Promotion Committee to investigate.) It was reported that some of the windscreen decals issued by the Society had a tendency to discolour and also to slide on the adhesive. This to be checked out with Quik-Stik when next ordering.

Stock Agents — In a lot of cases, agents were not keen on cattle of the new breeds and tended to discount them. Such an attitude was mainly through ignorance and Clubs should make every endeavour to educate them. Agents who had had experience in marketing cattle such as Simmental were quick to realise their potential and capitalised on it.

Percentage Cattle for Sale — Following a discussion held, it was suggested that members who normally marketed all their surplus weaners should pick a few of the top calves and grow them out for the local market. As an example, if thirty breeders brought only three or four steers each through to a marketable stage, it would release close on a hundred prime Simmentals in the area.

Halfbred Simmentals — With progression in the grading up system, a lot of people were disposing of their first cross (Halfbred) stock and this was obviously going to create a 'generation gap' in the weaners available for annual markets until such time as Simmental bulls become more widely used. Members who could maintain graded halfbreds were urged to utilise them for production of commercial crossbreds.

Members with cattle for sale (registered) were urged to advertise them through the Magazine so that other Members had an opportunity of adding to their herds. It was emphasised that such cattle should only be of quality.

Field Days — Delegates were generally of the opinion that Field Days as such had about run their course and that Clubs should think of more worthwhile activities. Suggestions put forward were:— cattle handling, leading, tying up, tattooing, judging/appraisal, marketing, lectures by fat stock people.

Exhibitions — It was felt that with competitive showing under way, the need for exhibits had diminished. It was felt, however, that some basis should be maintained at shows where Members could meet.

WAIKATO CLUB RUNS SUCCESSFUL FIELD DAY

Recently the Waikato Club organised a Field Day on the Kiwitahi property of Messrs N. & K. Buchanan. Thirty breeders and interested enthusiasts attended and were not disappointed at what was being displayed. Noel and Ken had gone to a lot of trouble to erect small paddocks so the stock could be inspected more conveniently.

The Buchanans have for a number of years, been upgrading from Friesian cows and have a number of excellent seven-eighths bred progeny to show for their programme. Also on show were their two Purebred cows with calves at foot.

After a well prepared lunch the Committee organised a judging competition between the Members present. Gary and Janet Locke from Gordonton brought over their recently imported Purebred rising two year old heifers. Mr Jim Middleton from Pokeno, was invited to comment on the three heifers after the Members had completed a judging card and had listed the heifers in their order of priority and commented on same.

It was an interesting day and was enjoyed I am sure by all who were present.



Waikato Club Members, Mrs. B. Anderson, Geoff Mathis, Ken Buchanan and Barry Anderson.

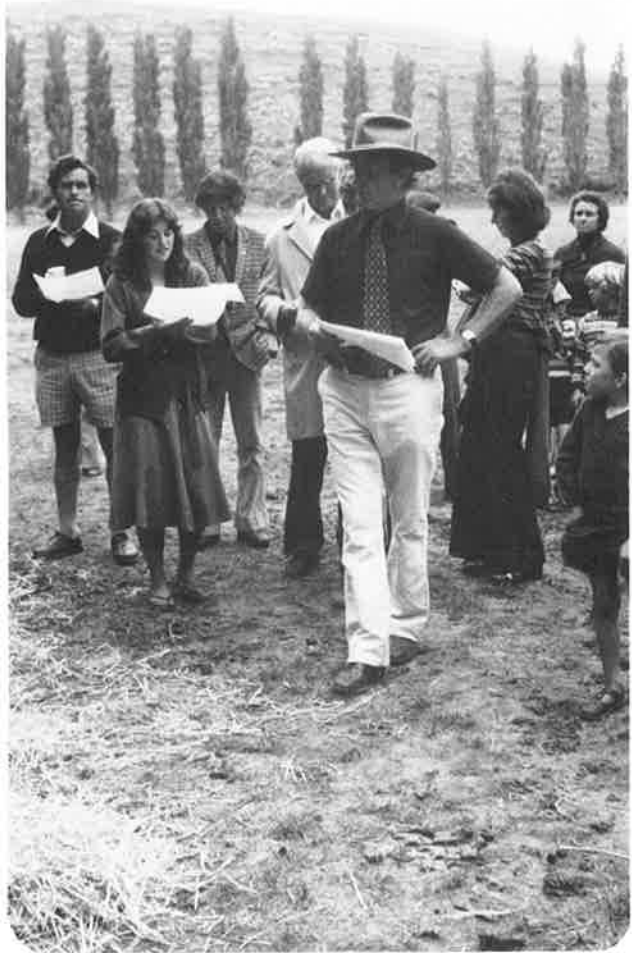
Having successfully disposed of the words 'exotic' and 'new breed' let us strike out another. Fifteen-sixteenth is hard to write and worse to spell and does not describe any animal in our register. Those cattle of fourth cross in our grading-up system are Purebreds.

CANTERBURY/WESTLAND CLUB FIELD DAY

On the 8th April, the above Club held a highly successful Field Day in the Leeston area some twenty miles east of Christchurch. Calls were made at the properties of D. P. Graham & Son, Tai Tapu, E. W. Turrell, Kaituna and M. Manson, Motukarara before proceeding to O. J. Osborne's property where the remainder of the day was spent.

Some eighty Members and friends attended and took the opportunity of inspecting and discussing an excellent cross-section of cattle covering all grades. At the Osborne's property a number of cattle belonging to breeders in the area had been trucked in and each breeder spoke on his own animals. A new innovation which proved most successful was the selection of five animals for appraisal and judging by those present. Three judges made their own selection which was for the purpose of the exercise deemed to be final and Members all had a go at their own selection. Results were interesting as were the comments that were made.

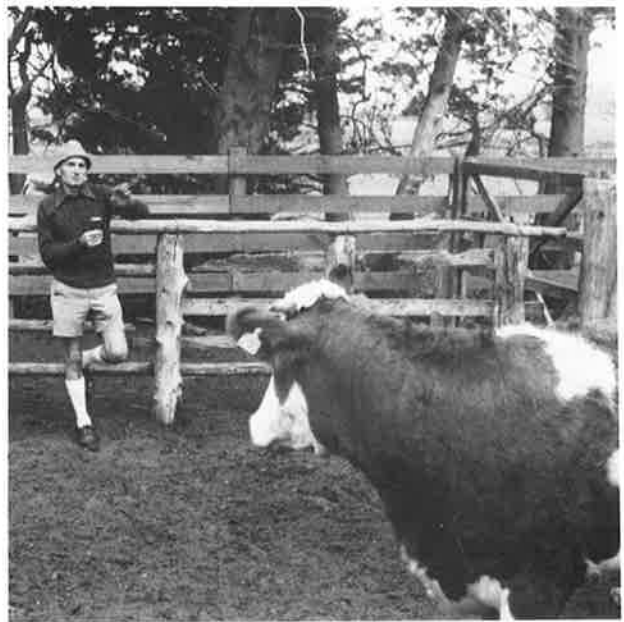
The Club is to be congratulated on a very well run Field Day, run to schedule with a great deal of interest throughout. Members are also most grateful to the Osborne family for the great amount of work that had obviously gone into preparation for the day and their hospitality to those present. Those other Members whose properties were visited are also thanked for their organisation and making their properties and cattle available. The whole day was enjoyed by those who attended.



Ted Turrell addresses visitors at the Canterbury Club Field Day.



David Ford talks at Oakleigh Osborne's. His bull shows an intelligent interest.



Max Manson of Motukarara illustrates a point.

'HARLAU'



SIMMENTALS & SUFFOLKS

**Young Purebred Stock
Available
Inspection Invited**

**R.H. Kerr, Harlau, Salisbury, 2 RD, Timaru
Phone 88996**

Late Fee for Registrations

Members are reminded that a penalty fee will be charged for registrations received after the 30th June. All calves born between the 1st January and 31st December, must have registration applications lodged in the Office by the 30th June the following year. The penalty fee will be equivalent to the normal fee charged. Cattle will, however, remain viable for registration for one further year subject to payment of double fees.

A suggestion:

At the time of registration, you may, as some breeders have found, have a young animal that does not match up to your standards at the time. If you are indecisive about it, do not totally 'write it off'. It could well turn out to be a reasonable animal when it grows out and could be worth an additional \$5 or \$10 for inclusion in your herd.

SIRE REFERENCE SCHEME

The Technical Committee are delighted with the response received from Members in launching this most worthwhile scheme. If anyone has not already done so but would like to join the scheme, it is still open. All you require is thirty cows of any breed or grade. If you wish to enter please contact the Office as soon as possible.

Registrations

Members are asked to have a little patience in regard to the return of the Certificates of Registration for the cattle they have put forward for registration during the past few months. You must appreciate that the main volume of registrations for the year is arriving in the Office virtually in 'one hit' within a few weeks and will produce a formidable task for the Staff over the next month or two. They will be worked on progressively and as quickly as possible. All are recorded as received and filed awaiting processing. If you have urgent requirements for registration of animals due to sales or farm disposal, drop us a line and we will give them priority.

REGISTRATIONS: USE OF SIRES

With a greatly increased number of Purebred bulls being used for natural mating on breeders' properties, it would be most helpful if when completing Applications for Registrations Members note in the A.I. column of the registration sheet the fact that the calf is a result of natural mating. This can be simply done by entering the letter 'N'. As Registration Application Forms are reprinted, provision will be more clearly made for this information.

The National Sale 1978

We have received strong entries for this event to be held this year for the first time in Palmerston North on 3rd August. A Catalogue of seventyfour entries has been compiled, made up of twentytwo Pure Bulls, forty Pure Females, nine seven-eighth Females and three seven-eighth Bulls. With four exceptions the catalogue has come from North Island Breeders.

Southland Club Sale

The Southland Simmental Club held its first Sale at Gore on the 16th May. Thirtyfour entries were received comprising six Pure Bulls, sixteen seven-eighth Bulls, six seven-eighth Heifers and eight in-calf three-quarter Heifers. Pure Bulls sold at \$1000, \$900, \$550 and three at \$500. Apart from the two top priced animals the others were of commercial quality. The offering of seven-eighths Bulls was of quality and should have found a ready market but only six sold at an average of \$425. Buying strength was not apparent and the reserve price was perhaps, in hindsight, a little high. Seven-eighth Heifers were variable in size and quality with the top price of \$400. One excellent seven month heifer equalled the top price but was withdrawn. Of the six offered four sold. Three-quarter Heifers all sold and averaged \$227 with a top price of \$350 for an excellent rising two year heifer.

The sale while not being spectacular was well organised and cattle were generally presented in good sale condition. The objective was more commercial than pedigree and it was disappointing that the main offering of seven-eighth Bulls did not find a more buoyant market. Southland is an area where change is not entered into lightly and the breed will of necessity have to be seen to perform before it is accepted freely in the area. This will take time but must eventuate. The Southland Club are to be commended for their efforts in setting up the Sale. It is hoped that they will see fit to continue with this fixture.



A useful seven-eighth bull at the Gore Sale.

Private Sale

A complete dispersal sale of Mr R. S. Tait's herd at Putaruru with a number of outside entries, met a reasonable market despite extreme shortage of feed in the area which did not allow presentation of the cattle in the condition the vendor would have wished. A five year old Pure Cow brought \$1500 and her calf at foot brought \$800. Five Pure Bulls ranged from \$400 up to \$1300. Seven-eighth Heifers brought up to \$900 with the average around \$250. A large offering of three-quarter and halfbred Females brought with few exceptions, much above scheduled prices. The dispersal of this herd must have been a disappointment to Mr Tait who has been a strong Member of the Society. For family reasons he has sold his property and moved to Northland in retirement.

A number of other private sales are known to have been held in various areas. The results of these sales have not been spectacular but neither have the cattle offered. If cattle offered are poorly presented and in poor condition the result is completely predictable without respect for breed or vendor.

PRODUCTION INDEX: MILKING SIMMENTALS

A recent report from the dairy sector of our Membership is of interest.

From *Nelson*: The TNL Group (Transport Nelson) have supplied a number of Simmental cross cows to a dairy herd to be milked and herd tested. After a very hard season with extreme drought conditions, an individual analysis of the production index of Simmental, Friesian and Jersey cows has shown the following results:

66 traditional dairy cows — Production Index 98 (average)

21 Simmental cross cows — Production Index 106 (average)

(The Simmentals were from eleven different bulls)

From *Taranaki*: Four years ago, ten Simmental cross cows and sixteen A.A. Bred Friesians entered a herd. In the fourth season, five Simmentals and eight Friesians remained, the others having been culled for production and fertility. An analysis of the remaining cows Production Index is as follows:

8 Friesians — Production Index 106 (average)

5 Simmental cross — Production Index 113 (average)

(The Simmentals were from four different bulls)

THE POLAR BEAR CLUB

Membership of this somewhat exclusive and foolhardy brigade is normally made on a voluntary basis by mid winter swimming at such unlikely places as Christchurch and Dunedin. Recently, however, a new Member was launched in the sub-tropical far North at the same time as the Annual General Meeting. The Secretary, who has a number of sporting interests, was observed completing two lengths of the Waitangi Pool at an early hour one Friday morning. His Membership of the Polar Bear Club is under consideration but certain questions are being asked about his entry to the pool which was classified as unorthodox and the fact that his attire was perhaps more in keeping with a formal dinner than aquatic sports.

Miscellaneous

SUCCESS IN BEEF COMPETITIONS

We have recently received advice of further success with Simmental Steers in district competitions.

NELSON: TNL Group were placed third on the Hooks at the Nelson A. & P. Association Competition with a 30 month Simmental cross steer that dressed out at 301 kg and yielded 70.47 per cent scoring a total of 430 points. This was the first time Simmentals have entered this competition. It is of note that the animal placed was the third choice for entry. Two greatly superior steers of exactly the same age were disqualified as they had six teeth up. The age of the steers is guaranteed as all birth dates are recorded and the unscheduled appearance of four extra teeth makes the aging of animals by dentition questionable.

TNL also had another success by winning the Nelson A. & P. Association Beef Herd Cup for crossbred heifers and three-quarter bred Simmentals.

NORTHLAND: In the first entrance in the Whangarei A. & P. Association Hoof and Hooks Competition this month, Simmentals again made their mark. Terry Sloane of Mata and Jim Houlbrooke of Dargaville entered three steers in the over 270 kg class and obtained third, fourth and sixth placings. The Sloanes animal which was placed third, was in their opinion an average steer but the only one they had left on the property which qualified for entry. The Competition was won by a Charolais with a Murray Grey cross in second place.

We look forward to receiving the results of the Dargaville competition to be held shortly. Jim Houlbrooke has further entries for this competition which is on his home ground.

CANTERBURY: Although not in a competition, results received for steers slaughtered at a Canterbury Works on behalf of Cam Greenwood of Christchurch, are noteworthy. Four steers that were the 'tag end' of the mob last year were carried over and put in for slaughter last month. These animals at 3½ years dressed out at 380-398 kg all grading P.I. Another steer of the same age and mob but of traditional breed dressed out at 321 kg and was graded G. Mr Greenwood's cattle are run on undeveloped tussock hill country above Christchurch city and receive no supplementary feed whatsoever.

Members are thanked for the information they have sent in and congratulated on their success.

Transfers

Since the formation of the Society, we have always had a few problems on transfers. People selling cattle either forget to do a transfer or just do not bother which results in irate purchasers who usually vent their rage on the Society Office. It is the responsibility of the vendor (or seller) to draw up a transfer and send it to the purchaser who should countersign the top copy and return it to the Office. The vendor should also return the Certificate of Registration to the Office for endorsement and redirection to the purchaser once the countersigned transfer is received. This completes the deal.

A suggestion put forward by a Club Member would certainly help the situation a great deal if it could be implemented. People who are selling cattle at auction

(and they are almost without exception Members) should advise their area Club of the proposed sale. In nearly every case some Club Members will attend a Sale and if they could ensure that transfers were organised the job would be half done. Club Committees could hold a book of transfers which could be drawn on as needed. We have proved with local sales that if the transfer is motivated from the start, it invariably goes the whole journey and is completed. Club Committees may like to think about this suggestion. Stock firms in some areas are most helpful but it is not really their responsibility and if they decide they want nothing to do with it we cannot blame them.

If anyone has difficulty in obtaining a transfer they should firstly contact the vendor and if this does not produce fruit, go to the Office and provide all the detail they can. I cannot recall any transfer that has not been finalised where all relevant details have been obtained.

New Zealand Agricultural Field Days

The Secretary recently attended the New Zealand Field Days at Mystery Creek just south of Hamilton. In its tenth year, this exhibition presented to the farmers of New Zealand display and demonstration of an estimated twelve million dollar-plus of agricultural machinery and allied services. Spread over sixty-five hectares (160 acres) machinery and equipment is not only on display but demonstrated under full working conditions. During the three days on which the Field Days are held, literally thousands of people are on the grounds from all over New Zealand and from many overseas countries.

The Waikato and Districts Simmental Club who have leased a site at the Field Days for five years, mounted a highly successful exhibition of nine Simmentals under cover of a large marquee and drew constant interest from the public. At least three Club Members were on duty all the time and were fully occupied discussing the breed with visitors and interested farmers many of whom were commercial breeders. Hundreds of people visited the display including many overseas visitors. The cattle exhibited were presented in show condition and were an example of the reward of good stockmanship. As a handout to those people who were interested, the Club had drawn up in association with the Office, a series of news releases setting out the success of the breed over recent months at various weaner sales and meat competitions. This fortified by proven performance what the breed can do and drew favourable comment from all who received the folder containing this information.

The Simmental display was one of the few cattle exhibitions — the Charolais Society was also present with a good display and amazingly had a duplicate (and impressive) display mounted close by that had been erected by an individual Member — an example of self promotion if you like. Beef Shorthorns were also on display on a minor scale.

The Field Days are probably the biggest event of their kind in the Southern Hemisphere and the Waikato Districts Club must be highly praised for their efforts in presenting such an excellent exhibition of cattle well displayed with finesse.

SSS Simmentals -for endless breeding

Ours is still the biggest stud of German Simmental in Britain. Our top 14 sires include the very best bloodlines and "families" from the area which produces the very best in the breed — Southern Bavaria. The stud is the product of no fewer than five separate importations and a selection

procedure based on the collective practical experience and expertise of top Scottish stockmen.

For the breeder who knows how to make the best use of the best, Scottish Simmentals offer endless breeding scope.



SCOTTISH GERALD 7318651. At 4 yrs. 4 mths. this bull weighed 1100 kgs. (2425 lbs) and was 147 cms. in height. This bull is currently being progeny tested and the interim calving survey on 174 observations is (1) Farmer Assist 1.1 % (2) Veterinary Assist 0.0 % (3) Malpresentation 0.0 %.

Scottish Semen Services

Southbar Cattle Breeding Centre, Inchinnan, Renfrew, Scotland
Newlands Cattle Breeding Centre, Scone, Perthshire, Scotland

Division of the S.M.M.B. Underwood Road, Paisley

Breed Scottish~Breed Best

Selected by Stockmen for Stockmen



Dalgety New Zealand Ltd. Central
Stud Stock Department
Ph. Palmerston North 68039
International Semen Distributors Ltd.
Ph. Palmerston North 69129
Northland Herd Improvement
Association Inc. Ph. Whangarei 84059
Auckland Herd Improvement
Association Inc. Ph. Hamilton 81129
Bay of Plenty and East Coast Herd
Improvement Association Inc.
Ph. Whakatane 7269
Livestock Improvement Association
Taranaki Inc. Ph. New Plymouth 80479
Livestock Improvement Association
Wellington-Hawke's Bay Inc.
Ph. Palmerston North 80102
Livestock Improvement Association
South Island Inc. . . . Ph. Christchurch 892079
South Island Breeding Centre Ltd.
Ph. Kaiaipoi 6175
D. P. Graham and Sons . . . Ph. Tai Tapu 824
NZ Sire Services Ltd. . . Ph. Hamilton 437995
NZ Dairy Board Semen Sales
Ph. Hamilton 65044

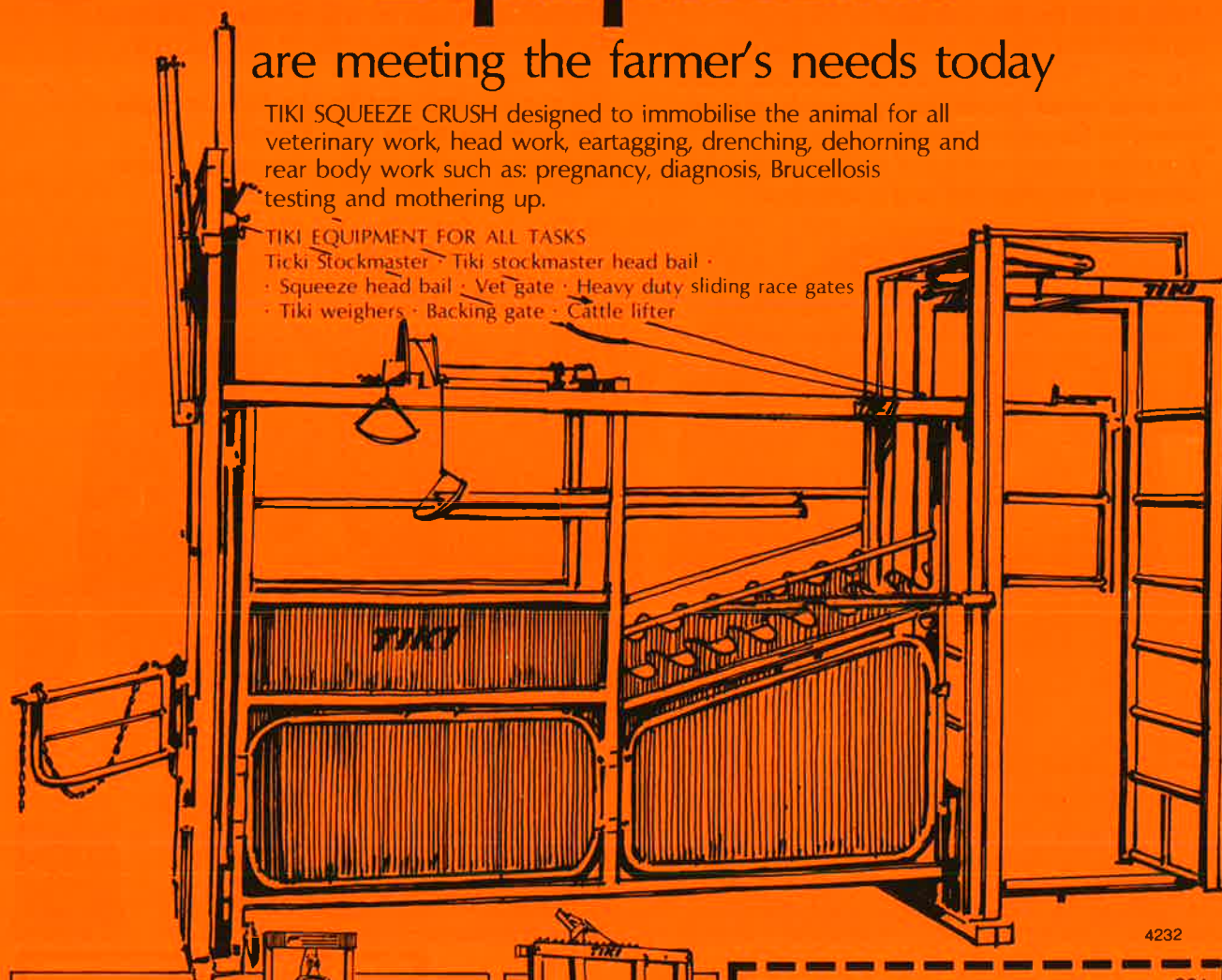
Tiki Cattle Handling Systems and Equipment

are meeting the farmer's needs today

TIKI SQUEEZE CRUSH designed to immobilise the animal for all veterinary work, head work, ear tagging, drenching, dehorning and rear body work such as: pregnancy, diagnosis, Brucellosis testing and mothering up.

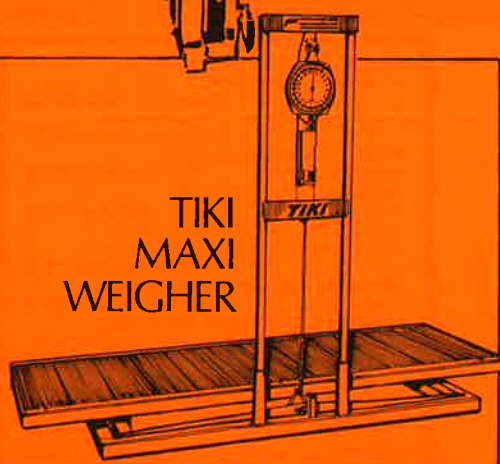
TIKI EQUIPMENT FOR ALL TASKS

· Tiki Stockmaster · Tiki stockmaster head bail ·
· Squeeze head bail · Vet gate · Heavy duty sliding race gates
· Tiki weighers · Backing gate · Cattle lifter

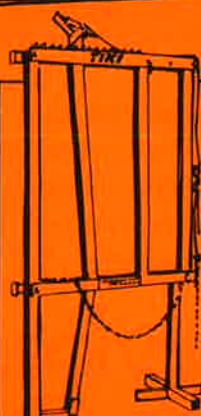


4232

TIKI
MAXI
WEIGHER



TIKI JUNIOR
HEAD BAIL



To: The Machinery Distributor,
P.O. Box 1895, Wellington.

Please send me additional information.

Name

Address

CSJ

TIKI