

new zealand simmental



autumn issue 1978 number four

\$Scottish \$Simmental

The stock to beef up your profits!

Scottish Extra Special — a big, red Simmental bull specially recommended for Australian conditions.



SCOTTISH EXTRA SPECIAL 8708142. At 3 yrs. 3 mths. this bull weighed 988 kgs. (2178 lbs.) and was 148 cms. in height. Performance Test Result (German):— 64 lbs. above test average, 2.97 lbs. D.L.G. from birth, 3.23 lbs. D.L.G. 112-420 days, 129 cms. at withers at 420 days, 2 cms. above test average. Calving survey and progeny test (1976-77) under way in the U.K.

Scottish Semen Services

Southbar Cattle Breeding Centre, Inchinnan, Renfrew, Scotland
Newlands Cattle Breeding Centre, Scone, Perthshire, Scotland

Division of the S.M.M.B. Underwood Road, Paisley

Breed Scottish-Breed Best

Selected by Stockmen for Stockmen



Dalgaty New Zealand Ltd. Central Stud Stock Department
Ph. Palmerston North 68039
International Semen Distributors Ltd.
Ph. Palmerston North 69129
Northland Herd Improvement Association Inc. Ph. Whangarei 84059
Auckland Herd Improvement Association Inc. Ph. Hamilton 81129
Bay of Plenty and East Coast Herd Improvement Association Inc.
Ph. Whakatane 7269
Livestock Improvement Association Taranaki Inc. Ph. New Plymouth 80479
Livestock Improvement Association Wellington-Hawke's Bay Inc.
Ph. Palmerston North 80102
Livestock Improvement Association South Island Inc. . . Ph. Christchurch 892079
South Island Breeding Centre Ltd.
Ph. Kaiapoi 6175
D. P. Graham and Sons . . . Ph. Tai Tapu 824
NZ Sire Services Ltd. . Ph. Hamilton 437995
NZ Dairy Board Semen Sales
Ph. Hamilton 65044

THE SIMMENTAL CATTLE BREEDERS'

SOCIETY OF NEW ZEALAND (INC.)



118 VICTORIA STREET, CHRISTCHURCH 1, NEW ZEALAND.

P.O. BOX 25·100, VICTORIA STREET, CHRISTCHURCH. Phone 793·166

Contents

Editorial	1
Profile	3
Sire Reference Scheme	4
Steer Weight Gain Competition	5
Sydney Royal Show	6
Sales	9
People	9
Club News	10
Miscellaneous	13
The Council	15

Advertisers

Scottish Semen Services
Bullpower
Tiki Cattle Handling Systems
Longwood Simmental Stud
Levels Simmental Stud
Haldon Simmental
Atrig Simmentals
'Rutherford' Simmental Stud
Mrs Michael Hall
South Pacific Simmentals
H. Korman
Harlau Simmentals

Editorial

Promotion is basically the putting forward of ideas or information. We see it daily applied to all manner of items and ideas. It is used to stimulate interest in goods and services, people and pleasures.

As a Society, we use promotion for the benefit of our Members and the public to enhance the advantages of our breed. Your Promotion Committee endeavours to put forward ideas and information that can be used as guide-lines in giving uniformity to the future of the breed. As with any promotion programme, the 'promoter' can only put forward the ideas — the end result is entirely over to the individual, in this case the breeder.

In round terms, New Zealand has ten million cattle of various types and breeds. Each breed and type is promoted in some way to highlight its advantages. Within breeds there is but a small strata of top flight animals but many thousands of good average cattle which are the main stream of economic existence. The Simmental breed is no exception.

At the present time we are constantly reminded we have a downturn in our economy. Such a situation brings a sharper assessment of what is viable and what is not. With less liquidity people are more objective on how they utilise it. At such a time we must continue to promote — more objectively than ever before. On many occasions over the past few years, we have stressed the need for diligent presentation of the breed. It is imperative that we continue to do so.

The breed's future depends on the efforts of you, the breeder, in presentation of your animals at all levels. We can 'promote' but without your support our efforts are worthless. Make this, 1978, your promotion year.

Office Staff

Ian S. Johnstone
(Society Secretary)
Mrs. Jocelyn Gilchrist
Mrs. Ann Booth

Council Members

President: R.H. Kerr, Harlau, Salisbury, R.D.2, Timaru.
Vice-Pres.: A. R. Marshall, Tutu Totara, R.D. 1, Marton.
Councillors: R.N.S. Cox, The Levels, R.D. 4, Timaru.
W. Gut, R.D. 29, Kaponga, Taranaki.
H.R. Lowry, P. B. Havelock North.
R.G. Macdonald, P.O. Box 20, Kaipoi.
J. R. Sutton, Waihaorunga, R.D. 7, Waimate.
E.W. Turrell, Kaituna, R.D.2, Christchurch.

LONGWOOD SIMMENTAL STUD

MASTERTON SALEYARDS, MAY 24TH 1978

Following the dispersal of nationally renowned Beef Shorthorn Stud on the 19th May. Simmentals founded on specially selected Stud Shorthorn females —

8 only Half-bred 3 and 4 year old cows by DANI, FRIARTON ACTOR and SCOTTISH NEFF.

6 only Half-bred 2 year old heifers by BALIG AGENT, SOLEIL and UELI.

ALL FEMALES IN-CALF TO HAMPSHIRE MAYER AND SALISBURY GRANDEUR.

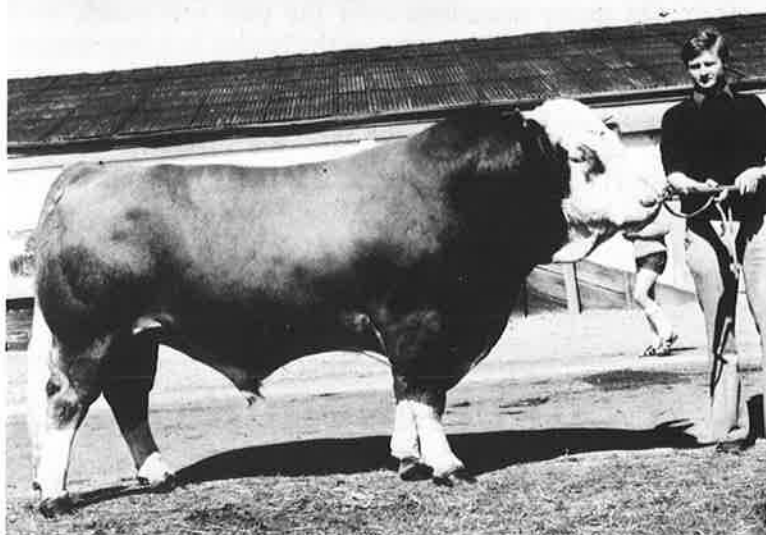
13 only Three-quarter bred calves by DANI, HAMPSHIRE MAYER, SOLEIL, UELI and FINGASK ARCHER.

5 only Three-quarter bred rising 2 year old bulls by FRIARTON ACTOR, SOLEIL and UELI.

Enquiries to: The Manager, R.D. 1, Featherston, Phone 89-657.

LEVELS SIMMENTAL STUD

EST. 1971 HERD N^o 3



**SKERRINGTON
BARON (Imp.)**

**CHAMPION
SIMMENTAL BULL
ROYAL SHOW 1977**

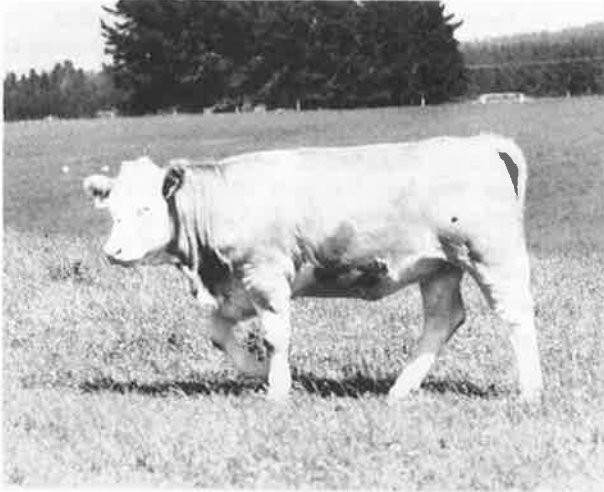
- SKERRINGTON BARON IS TYPICAL OF THE QUALITY THAT IS REQUIRED AT 'THE LEVELS'.
- PUREBRED AND GRADED ANIMALS AVAILABLE.

Enquiries welcome to: RODNEY COX, THE LEVELS, No 4 RD TIMARU. TEL. 82-418

Profile

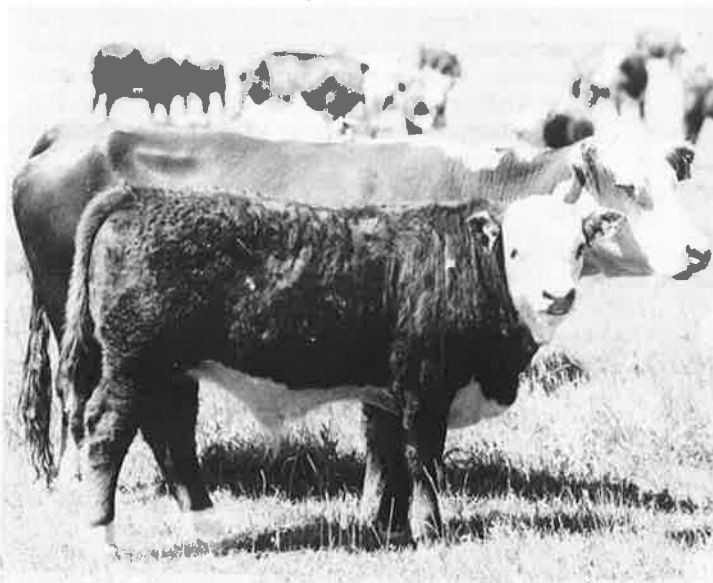
'Woodlands' of Windwhistle is situated some fifty miles from Christchurch against the Canterbury foothills, virtually in the shadow of Mount Hutt (now a well known New Zealand Ski Field). Set on high downlands, the property was originally one thousand acres in four paddocks devoid of trees or buildings when taken up by David Stone's father in 1912. Since then, extensive shelter belt planting has made this into a highly desirable and attractive property.

With a rainfall of forty-five inches per annum, the now six hundred and eighty acre property carries one thousand, eight hundred and fifty Coopworth ewes and approximately one hundred and twenty head of Simmental bred cattle which are now up to seven-eighths status in the grading-up programme.



A quality three-quarter bred heifer at 'Woodlands'

David, who took over management of the property in 1963, registered his first half-bred Simmentals in 1974 gradually introducing Simmental blood into his total herd. Starting originally from a Shorthorn base, he added to his base herd with selected Herefords from excellent stock and now has a very creditworthy herd of graded animals which have proved their adaptability in the rigorous winter climate in this area. He has established a continuing outlet for steers from his grading-up programme with the same purchaser each season.

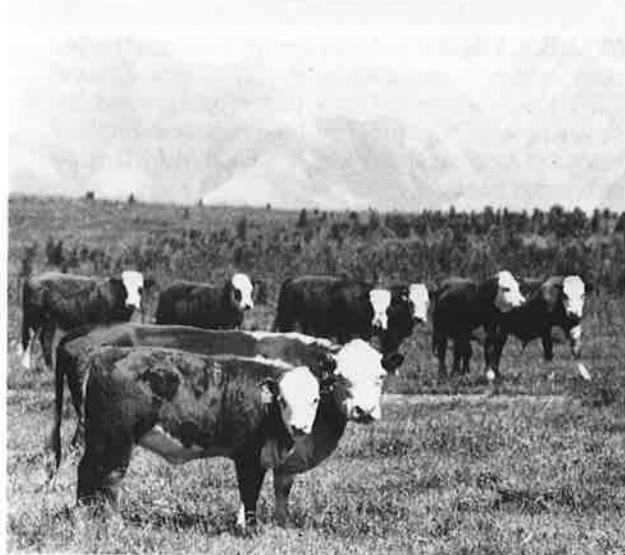


A top steer calf with its mother



David Stone of 'Woodlands' refuels his Cessna before flight to a Field Day with Rod Cox.

In his own words — 'It is my belief that the future of the breed lies in the hill country of New Zealand. When the process, which has already started has spread sufficiently widely, of butchers and supermarkets paying a premium for Simmental beef, then the fatteners will be paying premiums for these calves. Since by far the biggest herds of breeding cows are in the hill areas it is these farmers who stand to profit by making use of the advantages offered by the breed. I think the Society and members should encourage by any means — even giving or lending animals — these hill farmers to try the Simmental and judge for themselves its performance in their own situation.'



A group of the grade-up herd with the Mt. Hutt Range in the background.

A man of many interests, he claims never to have owned a car, but flies his own Cessna 180. He golfs on a low handicap, skis with great prowess and as an extra takes photographs with high professional ability. Despite his intensive activities both in farming and his other outlets, he still finds time to attend most Simmental functions that have been held to date. He is a breeder who I feel sure will enter the Purebred realm before too long. His ability to produce cattle of quality, marks well for such progression.

Sire Reference Scheme

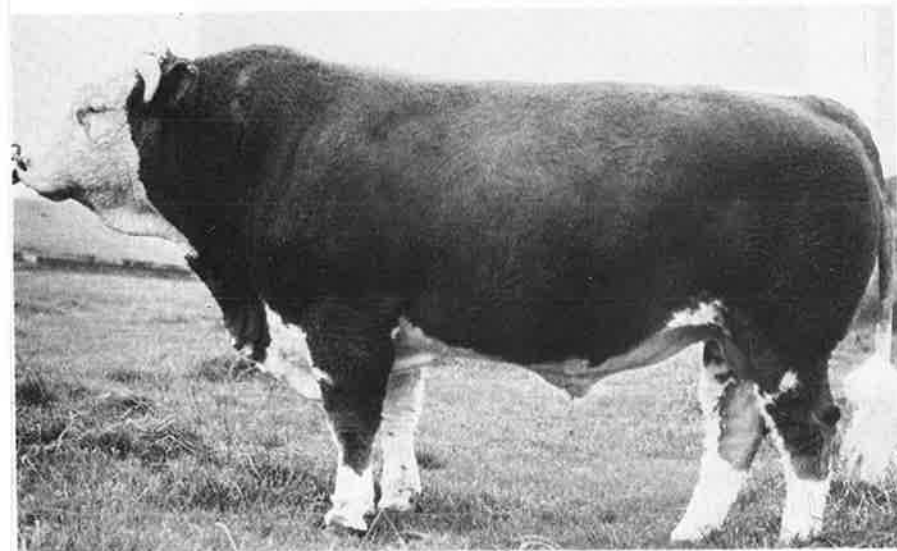
Members will have received advice of our project aimed at setting up a Sire Reference Scheme which will give us a 'register' against which bulls on our Sire List can be ranked. We have already received a number of replies offering cows for this purpose and ask those who would like to participate in this scheme, but have not yet done so to let us know as soon as possible. We require a minimum of thirty cows of any breed or cross in one herd for spring mating. More detailed information will be given to participants once we establish how many and where the herds are located. We will gladly answer any queries from interested members.

As advised in our initial circular we will use three overseas bulls and two New Zealand born bulls as reference sires. The bulls we have selected, will, we are sure find acceptance with breeders. Semen prices to participants in this scheme will be heavily discounted. (We would publish them but some minor negotiations have yet to be completed.)

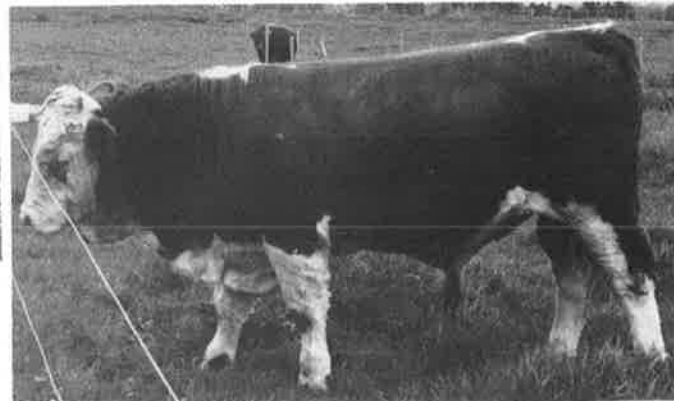
The bulls selected are as follows:-



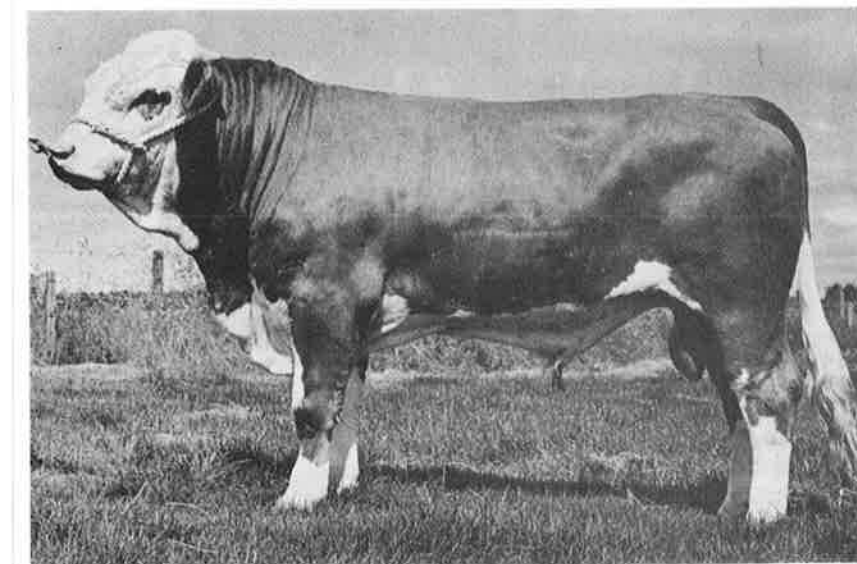
WINFIELD GOLIATH – A New Zealand born bull by Rebholz, he has probably the best recorded weight gain of any bull in New Zealand. An outstanding calf, he has continued through to become a most impressive two year old. Pale in colour, he is well structured and has attracted much attention both from New Zealanders and overseas visitors. 'Goliath' was added to the Sire List last year and has been at Guthrey Breeding Services A. I. Centre at Kaiapoi. His grand-sire Landmark is noted for progeny that have done well in the Show ring and also for outstanding quality females.



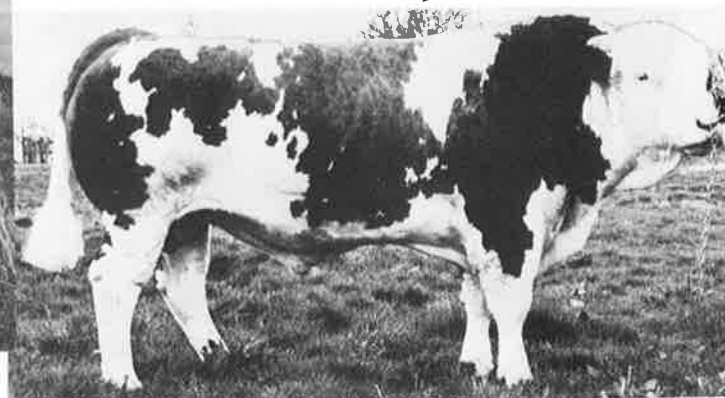
M.M.B. LANGLE – A bull bred in Germany. He has been used with encouraging results in New Zealand dairy herds where his milk factor background has shown up well in his progeny. His progeny in England ranked second in carcase weight gain in M.M.B. trials at Warren Farm.



SALISBURY GRANDEUR – A New Zealand born bull by Canadian Bavarian from an imported German heifer. 'Grandeur' has shown good growth rate and is of even dark colour, good conformation and temperament. He has recently been at Ambreed near Cambridge, who are most impressed with his potential. Grandeur was added to our Sire List in 1977. His dam, probably the only purebred in a milking herd in New Zealand, has ranked as top cow.



SCOTTISH EXTRA SPECIAL – A very popular bull from the Scottish Milk Marketing Board who has left some very good progeny both overseas and in New Zealand, including our 1977 Royal Show Champion. Interim reports on his progeny testing in Scotland are most favourable.



SALZ – A mature bull from Austria. His progeny have shown excellent growth rate added to which he has a very good calving ease record. Already a popular bull in New Zealand, he is leaving good stock.

Mid-Canterbury Steer Weight Gain Competition

An annual event in the meat industry in the Canterbury area, is a steer weight gain competition run over a four and a half month period during which time all entries are run together under the same grazing conditions. During the competition animals are regularly weighed and their weights tabulated for the competitors' information. The entries this year numbered forty-five in two classes 220 - 270 kgs. and 270 kg. and over.

The competition begins in October and goes through until mid-March when the entrants are judged on the hoof just prior to slaughter. In conjunction with this Competition, there is a normal steer competition also for animals that have not been in the weight gain project. Prizes are awarded for steers that have gained the greatest value of saleable export carcass weight.

From the results of the weight gain competition, we have carried out an analysis which we think will be of interest to our Members. In reporting on this competition we record sympathy to one of our breeders who was placed second in the weight gain sector and had the misfortune to lose his animal off the back of a transport truck while on the way to the freezing works.

STOP PRESS . . .

SIMMENTAL STEER WINS HAWKES BAY HOOF AND HOOKS COMPETITION.

It was a great day for the breed at Pacific Meats, Hastings, when a two and a half year old Simmental Angus cross steer from Kereru Station was placed first in both the Hoof and Hooks at this important annual competition.

The dressed carcass weight was 441 kg. (970 lbs) which yielded sixty-four per cent. Another steer from the same property, unplaced on the Hoof took fifth place on the Hooks. Competition was strong and the result is a milestone in the breed's establishment.

We have also just received advice that a Simmental cross steer was placed first on the Hooks at Feilding in the under 270 kg. Class.

METHVEN WEIGHT GAIN COMPETITION

	AVERAGE CARCASS WT.	CARCASS VALUE ON P1 ONLY	POINTS RIB EYE	DEPTH FAT	- PROVISIONAL RESULTS -		VALUE OF GAIN - \$	KILLING %	ENTRIES	NO. OF CARCASSES PER MEAT GRADE				% GRADING P1
					DISTRIBUTION FAT	GAIN SALEABLE MEAT KG.				P1	L1	G M	T	
SIMMENTAL X	321,2	\$204,14 (All P, 1)	14	57	6,4	58,8	37,4	55,5	7	7				100
SOUTH DEVON X	264,0	\$168,60 (1 G)	10,5	55	6,2	55,7	34,4	54,6	4	3	1			75
CHAROLAIS X	300,7	\$180,25 (4P1 6L1 1M)	13,5	47	5,1	65,0	46,2	55,2	11	4	6	1		44
MURREY GREY X	250,5	\$153,50 (All P, 1)	10,5	55	6,0	48,0	29,5	56,0	2	2				100
ANGUS X	237,0	\$145,50 (All P, 1)	9,5	40	6,0	38,4	29,5	54,6	2	2				100
ANGUS	243,7	\$152,50 (1, G1 Below Wt.)	7,5	55	5,5	42,2	24,9	53,4	4	3	1			75
HEREFORD X	248,0	\$152,00	9	60	6,0	53,6	33,0	55,7	1	1				100
½ FRIESIAN X LIM.	293,5	\$186,00 (All P, 1)	12	60	6,5	64,3	40,8	56,3	2	2				100
MAINE ANJOU X	325,0	\$206,00 (All P, 1)	14	60	6,0	55,7	35,4	55,8	2	2				100
LUING X	305,0	\$193,00 (All P, 1)	9,5	55	5,5	62,1	39,4	55,7	2	2				100
LIM. X ANGUS	278,0	\$176,00 (All P, 1)	15,5	60	7,0	49,2	31,2	57,3	2	2				100
SANTA GERTRUDUS X	264,5	\$162,00 (All P, 1)	8,5	60	6,5	51,8	31,8	52,35	2	2				100
MARILIGIANA X	315	\$200,00 (All P, 1)	13,0	60	7,0	56,1	35,6	54,1	1	1				100
RED POLL	276	- (1 G)	8,0	40	4,0	48,8	29,0	54,7	1		1			0
AVERAGES	280,15 Kg.	\$175,34	11,0	54,5	5,9	56,5	34,9	55,1	43	33	6	3	1	

13 Breeds

ALL CATTLE GATHERED ONTO ONE FARM IN OCTOBER AND KILLED IN MARCH, ALL GRAZED TOGETHER,

ALL SIMMENTALS WERE THREE-QUARTER BREDS EXCEPT ONE BEING HALF SIMMENTAL/FRIESIAN X HEREFORD,

1978 SYDNEY ROYAL SHOW



Mr Richard Kerr, President of the Simmental Cattle Breeders Society of NZ, presenting the New Zealand Trophy for the Grand Champion Simmental Bull of 1978 Sydney Royal, to the winner, Mr Harry M. Miller, Dunmore, Manilla, NSW, at the Annual Simmental Dinner.

In the foreground is Mr David Wright, winner of the Spermex Trophy, presented by Spermex Germany, to the most successful exhibitor of Simmental Carcass Cattle in Australia each year.



GRAND CHAMPION BULL AT SYDNEY ROYAL 1978

Arcadia Dunmore Felix, c. 1.9.75, being decorated by Mrs Elizabeth Emerson, wife of the judge on the left, Mr David Emerson. On the right is stud groom, Peter MacWilliams.

1978 SYDNEY ROYAL SHOW

Sydney Show

The 1978 Sydney Royal Easter Show will long be remembered for the weather. Saturday 18th March was judging day and it just seemed to rain and blow all day. Not an easy day for judge, Mr David Emerson of Victoria or for exhibitors. However the weather didn't detract from the interest shown in the Simmental judging and only the Herefords could boast more spectators.

With only one or two exceptions the "line up" of cattle for this year's show was excellent and as always the cattle very well presented.

Mr Harry Miller, Dunmore Manilla, again won the New Zealand trophy for the Grand Champion Bull with his entry Arcadia Dunmore Felix by Extra. He was a fine, well grown bull but it was not an easy decision for the judge as Munga Park Pastoral Co. had won the "over 16 months and not over 20 months" class with what I thought was an outstanding bull, Munga Park Extra by Extra.

The day really went to Mr & Mrs Burnell of Munga Park Stud, South Australia, because from an entry of five they achieved three firsts and one second and against strong competition in two of the classes.

The results were:

Bull, over 14 and not over 16 months.

Munga Park Beau Beat 27/12/76. s. Beat d. Aroha Eileen

Bull, over 16 and not over 20 months.

1. Munga Park Extra 10/8/76. s. Extra d. Aroha Eileen
2. Waterloo Park Victor 30/9/76. s. Scottish Metist d. Hobsland Dorothy
3. Old Talgai Arminal 30/10/76 s. Scottish Metist d. Sundowner R. Estelle
4. Waterloo Park Valiant 4/10/76 s. Scottish Metist d. Hobsland Dorothy

Bull, over 20 months old, born before 1/8/76.

1. Arcadia Dunmore Felix 1/9/75 s. Extra d. Friarton Charisma
2. East Dome Fabian 22/12/75 s. Abricot d. Terrs Clementine
3. Avalon Fortune 19/7/75 s. Beat d. Island Riana
4. Canterbury Cadillac 14/7/75 s. Scottish Neff d. Fingask Clementine

Heifer, over 14 and not over 16 months.

1. Tasman Victoria 15/12/76 s. Extra d. Balig Celia

Heifer, over 16 and not over 20 months.

1. Old Talgai Arna 26/10/76 s. Scottish Metist d. Sundowner R. Estelle
2. Munga Park Helena 2/8/76 s. Beat d. Southern Helene
3. Farmwodbury Annwen 22/9/76 s. Scottish Metist d. Ardno Delilah
4. Merrithree Veronica 7/11/76 s. M.M.B. Rebholz d. Sundowner R. Eloise

Cow, over 20 months old, born before 1/8/76.

1. Southern Helene 15/6/74 (Munga Park) s. Balig Agent d. Sundowner R. Blanche
2. Wynyard Dunmore Faye 10/7/75 (Dunmore Manilla) s. Scottish Herod d. Rymer Carol
3. Risingholme Dunmore Audrey 7/3/75 (Dunmore Manilla) s. Scottish Herod d. Leader Amanda
4. Avalon Onyx 18/9/75 (R. G. Tull) s. Ueili d. Island Doris

Australian Royale 15/3/78

The 1978 Australasian Simmental Royale was this year held at Mr Paul Trenoweth's property "The Steading", 48 miles from Sydney near the Hawkesbury River.

The sale, an unreserved one, was very well organised, well set out with marquees and an excellent barbecue lunch was available.

Considering that the same, if not more depressed, situation prevails in Australia as it does in New Zealand with regard to the Beef Industry, then the sale must be considered an excellent one and was well attended.

There were 8 purebred heifers offered and they averaged \$2,300.

Mr Dugald Mactaggart, Waterloo Stud, purchased the two best heifers. Blythe Greta, by Hamlet for \$4,400 and East Dome Gimbi, by Prili for \$3,200.

In the purebred cow section 5 were offered and all had been embryo transplanted, but P.T.I.C. These averaged \$2,090 and the top price paid was for Risingholme Dunmore Brenda, by Scottish Neff, with a heifer calf at foot, which was by Usch.

Unfortunately only three bulls were offered, some from New Zealand had not arrived as planned. The bulls were disappointing and the top price \$1,800 was paid for Tipapa Ferdinand, by Herod and born 14/7/75.

I felt that there was a demand for good bulls but for this class of sale only top animals with a potential can be offered.

In the graded up section 10 7/8 heifers were sold at an average of \$925 and two from Dunmore Manilla fetched \$1,200 with the lowest price at \$700.

A number of 3/4 cows, P.T.I.C. were also sold and these although varied averaged \$570 and even though there was an odd 7/8 calf at foot I considered it a good sale with vendors and purchasers reasonably happy with the day.



Three-quarter bred Simmentals in idyllic surroundings on Jerry Butler's property at Cambridge

TERMINATION OF MEMBERSHIP

As in all membership organisations there will always be some fluctuation in numbers. Members are reminded that should they wish to discontinue their membership they must first advise the office in writing. For a resignation to be effective all fees and levies outstanding, inclusive of the current year's subscription, must be met as set out in Rule 8(a).

HALDON SIMMENTAL

FOR SALE

120 rising two years half bred (unmated) Simmental heifers from Hereford base.

By REBHOLZ, HAMLET and other top bulls, they are high-country bred and of proven constitution.

Selected as the top line, these well grown heifers would make a useful addition to a graded-up herd or would provide first class breeding stock in a commercial unit.

Transfers can be provided if required.

Also available is a selection of in-calf seven-eighths bred heifers and weaners.

ENQUIRIES WELCOME

James Innes, Haldon Station, Fairlie.
Phone 377 K Fairlie

ATRIG SIMMENTALS

PUREBRED BULLS AVAILABLE

SIRE BAVARIAN KNIGHT and
M.M.B. REBHOLZ

Three of these bulls to be offered at
NATIONAL SALE

INSPECTION & ENQUIRIES WELCOMED

H.J. SMYTH — DANNEVIRKE
PHONE: MOTEA 837
DISPERSAL SALE

'RUTHERFORD' SIMMENTAL STUD

REDWOODS VALLEY, NELSON

INSPECTION WELCOME

Our Farm Manager, Rupert Martin (phone RDV 744 through the Nelson exchange) cordially welcomes your inspection of this Rutherford Simmental Stud Herd which is one of the largest grading-up herds within New Zealand.

Your enquiries are welcomed and inspection can be arranged to suit your requirements.

A LIMITED AMOUNT OF SEMEN IS AVAILABLE FROM SOME OF OUR STUD BULLS, ON APPLICATION



RUTHERFORD
SIMMENTAL STUD
FARM

Redwoods Valley, Nelson

Postal Address
Richmond R.D.1
NELSON

A DIVISION OF THE TNL Group Ltd.

STOCK IDENTIFICATION SPECIALISTS

SIMMENTAL TATTOOING EQUIPMENT



STANDARD TATTOO OUTFITS CONSIST OF

- 1 Pair Heavy Duty 5 letter Forceps
- 1 Set Tattoo Figures 0-9
- 1 Set Blanks (indispensable)
- 1 Five Figure Block (Herd Code)
- 1 Set Letters (Year & Breed)
- 1 Tin Tattoo Paste

Full instructions, all in strong, heavy carton with compartment for figures

EXTRAS always available for Charolais, Galloway, Aberdeen Angus, Limousin, Beef Shorthorn, Ayrshire, Milking Shorthorn, Hereford, Murray Grey, South Devon, Chianina, Jersey Brown Swiss, Simmental.

SPECIAL TATTOOS AND SPARES FOR ALL MAKES
MADE TO ORDER

THE FARM-ACY (NZ) LTD

339 FERGUSON ST. PALMERSTON NORTH P.O. BOX 30
PHONE 80-297

National Sale 1978

This, as you are aware, will be held in Palmerston North on the 3rd August 1978. Request for entries have just been despatched to you. Please remember entries close on the 19th May.

Invitation Sale, Hamilton

An invitation sale will be held in Hamilton on Friday, 21st April, at which will be offered Mr R. Tait's graded herd and Purebreds from Putaruru. It is understood several other Purebreds will also be offered.

Southland Club Sale

To be held at Gore on Tuesday, 16th May 1978.

Miscellaneous Sales

We have been advised that various graded-up Simmentals will be offered at the following North Island saleyards —

Wellsford	21st April 1978
Masterton	24th May 1978

Blythe Cattle Company Ltd. Sale

A large offering of Purebred Simmentals including some of the top cattle in the New Zealand Purebred Register, met a keen demand from breeders at the Blythe Cattle Company's dispersal sale on Friday, 14th April.

Buyers from many parts of New Zealand (and a few from Australia) attended the sale and the fifty-three animals offered were all sold. In consideration of the size of the offering and the present overall situation in the cattle industry, prices were considered sound and strong interest was maintained throughout the sale.

Top price was \$3,500 for an imported three year old cow with twin bull calves at foot. Seven lots brought over \$2,000 and twenty-three lots between \$1,000 — \$2,000. The balance of the Catalogue sold at slightly under \$1,000. Few animals were exportable and it was pleasing to see the strong interest shown by New Zealanders. The total clearance demonstrated great confidence in the breed.



New Secretary for the British Society

The New British Secretary will doubtless be known to some of our Members and many New Zealanders. An Englishman and also a naturalised Kiwi, David Gaunt was for five years Senior Lecturer in Dairy Technology at Massey University. He was also Secretary of the New Zealand Society of Dairy Science and Technology and a consultant to the Ministry of Foreign Affairs in their aid programme to the South Pacific. In 1976 he had the distinction of being made an Honorary Member of the New Zealand Dairy Research Institute. We are sorry to lose Mr Gaunt from New Zealand but wish him well in his new appointment and look forward to a close working relationship with him.



David Gaunt

Staff

The end of March will herald what is really the first major alteration to our office staffing since the present Secretary was appointed.

Mrs Nonie Childs, who joined us in early 1974, has worked on virtually every facet of the Society's activities and will leave us to travel to England with her husband and daughter where they hope to spend two years on a working holiday. During her time with the Society, she will have become well known to a lot of Members through her courteous little enquiry notes on registration queries and other documentation matters. A diligent and happy Member of our office, she will be missed by us all.

Len Walker, sixty-five years young and already retired twice, will make yet another attempt to put his feet up. He leaves us after more than two years working mainly on Purebred transactions and exports and has become well known amongst our Purebred breeders on both sides of the Tasman. Len's job has diminished to some extent with the reduction in trans-Tasman exports and imports from overseas. He will, however, be back when required to help us when we need him. In the meantime, he will concentrate even more keenly on his great hobby of bowls.

We thank both these Staff Members for their strong contribution to the Society's affairs and wish them well in their respective pursuits.

Club News

Clubs

Most areas are only now emerging from the main farming seasonal work and with the extremely dry conditions have had little time or incentive to organise many activities. It is known though that several Clubs have various projects in hand and these are reported as known.

Northland & Districts

The Club is busily engaged in organisation for the Annual General Meeting and has recently held a Meeting and small Field Day on H. Korman's property at Kaikohe which will be visited in June.

Waikato & Districts

Always something going on, a Field Day was held on N. & K. Buchanan's property near Morrinsville in February and we understand a show exhibit was mounted at Franklin which drew considerable interest. A purebred cow was displayed with seven of her 3 month old transplant calves alongside.



Waikato breeders, Noel and Ken (son) Buchanan with two of their Purebreds on their Morrinsville property

Taranaki

With milking in full swing and a terrible drought, they currently have enough to contend with without outside distractions. The Club mounted their usual attractive and worthwhile display at the Stratford Show. Of interest, the report on K. J. Schumacher's Purebred cow and bull calf in our last edition attracted most favourable comment from IMEX in West Germany who have requested and received photographs for promotional purposes. The cow in question was exported to New Zealand through IMEX.

Hawkes Bay

Already planning their arrangements for the New Zealand Royal Show, the Hawkes Bay Club will hold the Annual Meeting in April which will also include a Field Day.

In a recent weaner sale and a hard one at that (they too have a drought), Simmental weaners from Rissington made top price of \$80.

The Club will be host to this year's North Island Club delegates Meeting and have already planned a full programme of events.



Neil Barnett's herd sire, Alpha Fritz, who was also on display at the Field Day

Manawatu & Districts

Since our last edition, they have done a great deal of work and have been greatly rewarded. Neil Barnett generously made his property available over a weekend for what can be termed a 'continuous Field Day'. Over one hundred people took opportunity of visiting the property to view a comprehensive group of cattle of all grades that had been assembled specially for the project. People were issued printed information on the groups of cattle and Neil and his wife were on hand virtually all day to welcome visitors and show them around. Visitors were not limited to Simmental breeders and a number of breeders of traditional cattle took time to come and see for themselves.

A barbecue and light refreshments were provided. Full marks must go to the Club for an ambitious and worthwhile effort. Not contented with one project, the Club immediately followed up by organising a Simmental section in the Feilding Steer Sale in late January. This too, was a success in that the steers put forward were impressive and lifted what could have otherwise been a fairly static affair.

Promotion in this manner, properly done, is what the breed will thrive on.

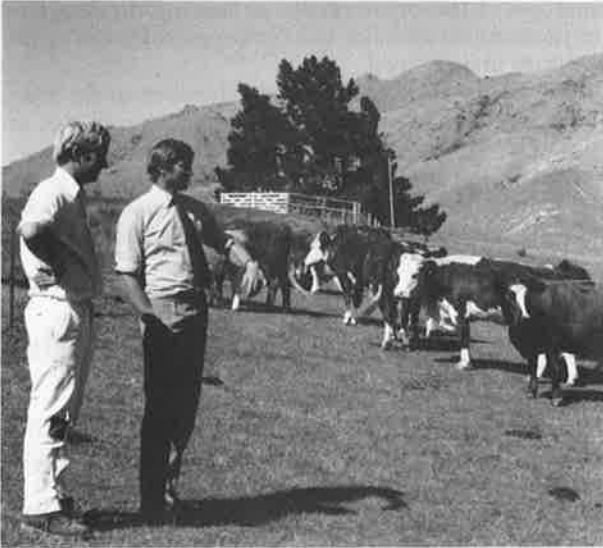


Three-quarter bred heifers at the Field Day on Neil Barnett's property at Halcombe near Feilding

Club News

Marlborough/Nelson

This small group of people are planning a possible trip to Canterbury to see something of what other breeders are doing. In their own area they are entering steers in the Nelson beef competition and hope to be able to exhibit some cattle at local Shows later in the year. The Transport Nelson Group have recently purchased the first Purebred females to go into the area and this will boost their resources considerably.



One of the larger breeders in Marlborough. Jim Lissaman discusses cattle with Rod Cox.

Southland

This group mounted a very good display of cattle at the Southland Show in December, regrettably on not a very good site (no fault of theirs). The display drew a lot of interest and favourable comments from those who saw it.

This year they will enter competitive showing in the ring for the first time. Because of the distance from main Sales, the Club has organised its own Sale on the 16th May 1978 and will offer selected graded cattle and both seven-eighths and Purebred bulls with main aim the commercial breeder.



Two well-known Southern Members John Robins and Ron Millar at the Southland Show

Canterbury/Westland

After stalwart efforts at the Royal Show in December the Club has been inactive but has a Field Day planned early in April which will be full of interest.

Mr D. S. Crosson of Methven, a well known Purebred breeder, has again taken the breed to the public in entering his cattle at a district Show. Regrettably he did not have competition but this is another example of self promotion.

South Canterbury

Have been inactive since December but will host the South Island Club Delegates Meeting later in April.

Otago

This group of Members has found that travel to Club activities in either South Canterbury or Southland is too far for most and are in the process of forming their own group. Next issue we hope to be able to report some activity from them.



Otago breeders Ron and Lee Sycamore with Rod Cox on their property on the boundary of Dunedin City.

Footnote: Where Clubs hold activities such as Field Days or special promotions, make sure you let your nearest Councillors know it is on. They like to be involved and give you support but can only do so if they have a bit of warning. We will try to ensure they are advised when we do a Club circular but a note from the Club Secretary is a bit more personal.

We also ask Clubs to keep us posted with results of their doings. Without information we cannot report your activities in the magazine — a statement of the obvious if you look at the Club reports!

Club News

Club Contacts

The following is a list of Club Chairmen and Secretaries throughout the country, as known at the time of this issue.

Northland & Districts:

Chairman: Geoff Palmer, Beasley Road, Parua Bay, Whangarei. Phone: Parua Bay 548
Secretary: Mrs Lynne Sloane, Mata, R.D. 1, Whangarei. Phone: Whangarei 22823

Waikato & Districts:

Chairman: Geoff Mathis, Overdale Road, R.D. 4, Putaruru. Phone: Putaruru 7833
Secretary: Mrs Betty Ashworth, Station Road, Matamata. Phone: Matamata 6441

Taranaki:

Chairman: Neville Reynolds, Kelly Road, R.D. 3, New Plymouth. Phone: Waitara 5600
Secretary: Aidan Schumacher, 27 York Road, R.D. 24, Stratford. Phone: Stratford 3270

Hawkes Bay:

Chairman: Robin Lowry, Pukekohu, Private Bag, Havelock North.
Phone: Waimarama 832
Secretary: Mrs Dorothy Radburn, Kereru Station, Private Bag, Hastings.
Phone: Maraekakaho 737

Manawatu & Districts:

Chairman: Jock Mackay, Oldfield, R.D. 9, Feilding. Phone: Feilding 8974
Secretary: Neil Barnett, Coopental, R.D. 9, Feilding. Phone: Halcombe 630

Wairarapa: Contact Michael Bamford, Waikohi, Private Bag, Masterton.
Phone: Blairlogie 697

Marlborough/Nelson & Districts:

Chairman: Rupert Martin, Transport Nelson Farm, Redwoods Valley, R.D. 1, Richmond, Nelson.
Phone: Redwoods Valley 744

Canterbury/Westland:

Chairman: Oakleigh Osborne, Winfield, R.D. 3 Christchurch. Phone: Leeston 345
Secretary: Robbie Luxton.
Phone: 227-097 Christchurch.

South Canterbury:

Chairman: Ted Parr, Middle Valley, Fairlie.
Phone: Pleasant Point 242
Secretary: Philip Kerr, Harlau, Salisbury, R.D. 2, Timaru. Phone: Timaru 88-996

Otago: Contact Stuart Eason, R.D. 1, Waikouaiti. Phone: Waikouaiti 311

Southland:

Chairman: John Robins, Wairaki Station, R.D. 2, Otautau. Phone: Orawia 517
Secretary: Mrs Gay Robins, Wairaki Station, R.D. 2, Otautau. Phone: Orawia 517.

Club Delegates Meetings

Following last year's successful introduction to Meetings for delegates from Clubs, the Promotion Committee has arranged further Meetings in both Islands.

Last year Meetings were held in Christchurch and Palmerston North and while these were deemed highly successful, it has been decided to move these Meetings each year to a different Club area. South Canterbury came up with the idea of each Club 'hosting' the delegates and they and Hawkes Bay will be the centre for this year's Meetings in mid April.

Delegates will be billeted with Members in the areas which will add interest and enable an interchange of ideas. The Meetings will involve stock appraisal, informal discussion and a more formal round table meeting. Members who have promotional ideas should contact their Committees so that they may be passed on to these Meetings.

The Fascination of the Simmental

In discussion with 'subject' of this issue's 'Profile' article, various matters were covered and a story was told which is, I think, worthy of space in this issue.

Like most Simmental breeders, David Stone has had visitors to look at his cattle. A couple of seasons ago, one such person arrived at an opportune time when cattle work was in progress at the yards. A Banks Peninsula farmer (and a Member) he diverted straight to the scene of the action obviously giving more attention to cattle than driving. Such was his absorption in what he saw that he only stopped when he was chassis deep in a nearby patch of swamp which necessitated extraction by his host's tractor.

Bull Power

The Sale ring has long been known for the 'quick quip' from the actioneer's rostrum and many a sale has been lifted in this manner. A recent cattle sale saw light relief of another kind when an entry, dissatisfied with the progress of his sale suddenly and without warning vented his displeasure on the auctioneer's rostrum and then decided he would get 'up there' with them himself. The fluent call of one of the country's leading auctioneers, Mr Warren Morepeth, froze as he literally flew into the rafters of the sales building, self preservation uppermost. Auctioneers assistants likewise dispersed at incredible speed leaving the fractious animal 'King of the Ring' to the uproarious delight of the gallery.

**POLLED GRADING UP LINES AVAILABLE NOW
WELL MARKED AND MATED**

ALSO YOUNG PUREBRED STOCK

**MRS MICHAEL HALL
HORORATA' CANTERBURY' Tel. 873 Hororata**

Agricultural and Pastoral Shows: Competitive Showing

If Members contemplate entering cattle in their district Agricultural and Pastoral Association Shows, they should make approaches at an early date to ensure classes are available for them. Classes are not automatically available, they must be applied for and in time for them to be included in the schedule calling for entries. It is suggested that if a Member wishes to show cattle he contacts his local Club Committee to see if other entries are available – one or two animals make a lonely presentation of cattle.

Above all, if you want to Show prepare your animals in plenty of time. You also are judged as a breeder by those animals you put forward.

A Quality Three-Quarter Bred Cow

'MOITAPU ERMINGUARD', one of the Society's earlier three-quarter bred registrations. Born in August 1974, she is by Hampshire Mayer out of a Herod/Hereford half-bred cow bred by J. J. Butler of Cambridge.

Under the care of Roy Elliot, well known stockman in the Hamilton area and part owner, she has developed into everything a three-quarter bred Simmental should be. At the time the photograph was taken, she was about to drop her first calf which regrettably turned out to be a bull. She is again in calf and hopefully will reproduce her own kind.



Moitapu Erminguard

Annual Herd Survey

This year we will for the first time call for an Annual Return of the state of your herd as at the 31st June 1978. Forms will be sent out to you in June for return to the Society Office by the 31st July 1978.

It is recommended that those who use the 'deep litter' system for filing, sort out their herd records in plenty of time.

The Annual Return is a mandatory requirement from all Members so please help us by completing your return when received.

Mr N. H. Curry of Greenpark, Canterbury, recently recorded success in the weaner market in Christchurch. He sold two eleven month old three-quarter bred bulls and topped the market with prices of \$136 and \$137 with his nearest competitor at \$113.

Herd Testing of Dairy Cattle

In the 1976 – 77 dairy season only 121 daughters qualified to be included in the Dairy Board Sire Survey for Simmental bulls. There must have been many more Simmental – cross cows tested. There are various reasons for the relatively small numbers.

1. Some cows were not properly identified. It is necessary to give the Dairy Board code number of the Sire, the tattoo of the cow and its breed ('T' for Simmental or 'TF' if she is a Simmental-Friesian cross).
2. For a Sire to be evaluated he must have at least six tested and identified daughters.
3. The Dairy Board only compares Sires within one breed, in our case Simmental Sires are only ranked within the Breed and therefore cannot be compared with the ranking of Friesian Sires or other Breeds.
4. For the Simmental cows to be included in the Survey there must be daughters of at least two Simmental bulls in the same herd. For example:- If you had twenty daughters by one bull only, he would be excluded from the survey as there is no other herd comparison for the Breed. Of course, testing figures would be very useful to compare your Simmental cows with other cows of other Breeds in your herd by production index.

This year the Dairy Board Sire Survey lists nine Simmental Sires. The small number of daughters unfortunately gives a low reliability figures.

If you wish to assess the worth of your Simmental cross in your herd you are urged to test. Make sure you enter complete details on your test sheets.

The Sires on the Dairy Board Survey are:-

AVONCROFT ASTER
BENT ADAMANT
BENT ALARIC
BON AMI
DANI
M.M.B. LANGLE
M.M.B. REBHOLZ
SCOTTISH NEPTUNE
BENT AMBASSADOR

Dairy Board Sire Surveys are available from any L.I.A. Office.

Payment on Carcase Yield

Over many years various people and groups of people have raised the question of payment for beef on 'yield' basis. Currently payments are made on a per kilo system regardless of the yield of saleable meat which does not give the return that should be available to high yielding carcasses such as the Simmentals and other newer breeds. The matter has been passed up and down the halls of the meat industry for years. It is of interest that the subject is being ventilated again by our associates the Charolais Cattle Society who have made an approach to the Combined Beef Breeders Research Committee to see if a suitable and acceptable system can be introduced to bring the marketer a better return. The Simmental Society commends the Charolais Society and supports this move and looks forward with interest to the outcome.

Miscellaneous

Tattoo Year Letter 1978

1978 YEAR LETTER FOR TATTOOING IS



You have already been advised that the Year Letter for 1978 tattooing has been changed from 'I' to 'J' because of the similarity of the former to the numeral. All calves born between 1st January and 31st December 1978 should carry the year letter 'J'.

Anyone who has already used 'I' should not be concerned. Notation will be made on your Registration Certificate.

Note: Please amend your Rule Book, Regulation 10 – Tattoo Sequence, to read as follows:

Year Letter

1978 = J

1979 = K

1980 = L

etc.

World Federation Meeting: Calgary

Although we have strenuously endeavoured to arrange a tour to attend the 1978 Bi-annual World Meeting in Canada and some people have shown interest, regrettably we do not have sufficient to make it a viable proposition. Individuals who might decide to attend may still do so but it may not be possible to get bookings to all events as there has been heavy enquiry from other countries. Anyone still interested should get in contact with the Secretary.

Simmentals under Drought Conditions

The Secretary recently visited the Marlborough/Nelson districts where the drought conditions have been terrible over the past few months. The first rain since before Christmas fell only a week or two ago and pasture growth is virtually only a 'tinge' of green. Under these extremely hard conditions it was of interest to see Simmental cattle maintaining condition which in many cases was better than other breeds. Reports from other areas which have been badly hit by the dry spell also indicate the Simmentals ability to survive well. A Taranaki breeder states that his milking Simmentals have held on better than the other cows in his herd under really appalling conditions. While it is a situation that nobody welcomes, it speaks well for the hardiness of the breed.

Rule Book

A revised edition of the Society's Rules and Regulations has been printed and sent to all Members of the Society. Should any Member not have received a copy one can be obtained from the Office on application.

Advertising

The 'New Zealand Simmental' has been well received by our Members and by others to whom it is sent. We have been complimented frequently on its standard. To produce a magazine of this quality, is time consuming and costly and we depend a great deal on advertising support for revenue. To date, apart from a few stalwarts, we have had great difficulty in obtaining advertising from breeders – last time we received only about four mini advertisements which were uneconomic to print. In our editorial we call for Promotion from within. If you look at any of the leading farming journals you will see many advertisements from individual breeders of various livestock. We ask you to support our Publication in content and for revenue purposes.

Election of Councillors

Members will have received a circular calling for nominations for Councillors. You are reminded that nominations close at midday on FRIDAY, 21ST APRIL 1978.

Society Ties

We are pleased to advise that we have received our long awaited ties from the manufacturer and those who have seen them are enthusiastic about their design and quality. We have three to choose from:-

1. Dress tie – dark blue with a fine red diagonal line at two inch intervals between which are three small Simmental symbols woven in white. Material Superfine Terylene. Price \$6.00
2. Casual tie – dark brown with single Simmental symbol woven under knot in off white. (Symbol is a little smaller than on our letterhead.) Material wool/terylene. Price \$5.00
3. Casual tie – dark green as in 2. Price \$5.00

Ties may be ordered through the Office. Prices include postage.

Annual General Meeting – Notices of Motion

Members are reminded that if they wish to propose any addition, alteration or deletion to the Society Rules or Constitution, this may only be done by giving notice in writing to the Secretary in sufficient time for the 'Notice of Motion' to be circulated to the total Membership, thirty days before the date set for the Annual Meeting. The last day notices of motion can be accepted at the Office will be WEDNESDAY, 24TH MAY.

Closing Date for Registrations

Members are reminded that all calves born from the 1st January to 31st December (inclusive) 1977, must be registered with the Society Office by the 30TH JUNE 1978.

Animals remain eligible for registration after this date for a further twelve months but are subject to a PENALTY FEE equal to the normal registration fee.

The Council

A Meeting of Council was held over two days on the 27th and 28th February. Committees met on the first day and a meeting of full Council followed the next morning. Matters considered by this meeting are as follows.

Finance

Prior to the meeting of the Finance Committee some considerable research had been carried out on the involvement of the Society Membership in breeding cattle and from this it was possible to project what might take place within the Society's structure in the immediate future. The quarterly balance to the end of December 1977 showed a sound financial situation, but it was obvious that there would be a reduction in income and membership. The latter had been anticipated for some considerable time and with one the other must follow. The highly inflated prices of the early 70's had brought a great number of people into the membership who saw quick gain with little regard for the long term view and many of these joined solely to breed cattle and sell them. Since their initial involvement they have done little and it is a natural step that once a more realistic situation prevails they will drop by the wayside. The Society in objective terms is undergoing consolidation which is being sponsored by the prevailing economic situation. We have however a very solid core of Members who continue to breed cattle and these are strongly backed by the solid investments the Council has made over the past few years.

With a rationalisation in cattle prices we anticipate considerable drop in income from registrations, particularly in the lower echelon cattle such as half-breds. Purebreds are increasing and this will to some extent offset this trend in the long term.

With a reduction in membership and registrations there must follow some easing of the work load in the Society office which will allow reduction in overheads in this sector. Already moves have been made to restructure our establishment and two staff members, who have left of their own accord, will not be replaced. The Finance Committee will watch closely all expenditure and will review regularly outstandings of any age in our accounts.

While our membership will not be as impressive in total numbers it will be made up of those who are serious about what they are doing with the result of better cattle and an assured future for the Breed.

Promotion

Mr Cox, Chairman of the Promotion Committee, emphasised the necessity for 'self promotion' amongst the membership. The Promotion Committee as far as possible aimed to give a lead to members but it was largely over to the individual as to how he promoted himself.

Objectives suggested and matters put forward by the Committee were as follows:-

- * To encourage members to promote themselves through the 'New Zealand Simmental'.
- * Create a competitive atmosphere amongst members.
- * Promote percentage (and Purebred) bulls to commercial breeders.
- * Involve members and others who show interest in the Breed.

On general Promotion the following topics were discussed:-

Magazine – The present format was considered good and should be continued with request for greater member advertising.

Clubs – Their continuance was essential in the Society's structure and every support would be given to motivating and expanding Clubs and Membership in their areas.

Club Expenditure – A review of expenditure by each Club was presented to the Committee and it was considered funds had been well spent, and within budget. An allocation similar to last year would be made available to each Club who should draw up a budget for planned promotion and submit it to the Promotion Committee for approval. Expenditure above the allocation would be considered by the Committee as in the past for major projects which have National connotations – for example the National Field Days.

Shows – Clubs and individuals should promote competitive showing. The Society would sponsor the Royal Show only.

National Advertising – The Committee planned National advertising through the New Zealand Farmer and Straight Furrow and through other publications and media as necessary. A maximum of \$2,500 would be set aside for this purpose.

Meat Competitions – As previously planned, a \$50 prize would be given for the Simmental carcass gaining the most points in meat competitions in a Club area.

Club Field Days – The Secretary was asked to give copies of all circulars on Club activities to every Club so that they are aware of what is going on around the country. Copies should also be sent to Councillors so that they may participate where applicable.

Visit by Secretary to Club Areas – The Secretary would continue to make visits to all Club areas. Such visits would desirably be made at a time when some Club activity was in progress. Clubs would be advised of likely dates such visits would be made.

Promotional Items – The office had recently received a supply of Society Ties and these are now available for members. (Reported elsewhere in this issue).

Delegates Meetings – Club Delegates Meetings would be arranged in both Islands in April.

Technical

Mr J. R. Sutton, Chairman of the Technical Committee, put before the Committee a number of matters which were discussed as follows:-

Recording Systems – The Committee discussed briefly the situation regarding the implementation of the National Recording System. It was reported that the National Beef Improvement Committee were meeting in Wellington on the 28th February (next day) and until the outcome of the meeting was known no report could be given. The N.B.I.C. has been completely restructured through the New Zealand Meat Producers Board and the L.I.A. and it is hoped that the long awaited recording system will now eventuate.

NOTE: An interim report has been received that representatives of the N.B.I.C. will shortly visit each Society to table plans for what could be the basis of a suitable scheme.

The Council

Meat Grading – The Charolais Cattle Society was working hard to promote a grading system within the Freezing Industry to give a return for yield in carcase grading. The Technical Committee asked that the Secretary write to the Charolais Society giving support to this project.

Sire Reference Scheme – The Committee discussed at length the set-up of a scheme whereby bulls of the Society Sire list could be ranked against known factors. Members have already been circulated on this matter which is also elaborated elsewhere in this issue.

Sales

The Sales Committee discussed arrangements for the National Sale to be held in Palmerston North on the 3rd of August, 1978.

All members have already been circulated on this event and entries have been called for.

General Council Business

World Federation Be-Annual Meeting – The Secretary advised that a few people had shown interest in this Meeting to be held in Canada in July. If a Tour was successfully arranged, the Council would grant the Secretary leave to attend. (Regrettably this did not eventuate. Ed.)

The involvement of the New Zealand Society in the World Federation was also discussed and was held over until the President, Mr Kerr, had had discussions with the Australian President, Mr R. W. Vincent, in Australia. Mr Vincent is World Vice-President and has attended a number of Federation Meetings.

Combined Beef Breeders Research Committee

The Council agreed to allocate this body \$300 which is subsidised dollar for dollar by the Government and used for research into beef cattle at both Lincoln and Massey Universities.

Council Elections

The Secretary outlined plans for this years elections which have already been sent to Members.

Annual Meeting – Bay of Islands

The Secretary reported on plans for the Annual Meeting which was being reasonably well supported in view of the current economic situation. Plans and bookings are being firmed up and it looks as though a gathering of approximately one hundred people will be present.

Royal Sydney Show

The Council decided that the Society President, Mr R. H. Kerr, who would be in Sydney on a private visit at the time of the Royal Show would represent the Society at the Australian Association Annual Meeting and other various functions held at the same time. (A report on the Show appears elsewhere.)

Annual Return – Herd Status

For the first time this year an Annual Return of cattle within a members herd will be called for. Until this is received it is virtually impossible to establish with any accuracy just how many animals are still actually in members herds. Forms will be sent out to members for this purpose in June.

Frozen Ova

Frozen ova is now a viable proposition and the Council considered means of control documentation on its use. The Secretary was asked to formulate what was required and this will basically follow a similar system to that used for ovum transplant. Any member who desires to use frozen ova or export it should contact the Secretary for details of what is required.

Cattle Colours – Grading-up

The Council had been asked to deliberate on the question of wide variation in colour in animals from the grading-up system. Some seven-eighth cross animals were of colours quite unlike what is expected of a Simmental – blue greys and dark colours showing little resemblance to the parent breed. It was anticipated that these colours would continue to appear in cattle from the graded-up herds. The Council resolved that they would place no discrimination on such cattle, and that it would be left to the buyer to discern their viability.

Next Meeting of Council

The Council will next meet on the 27th June prior to the Annual Meeting in the Bay of Islands.

Office Address

Despite the fact that we have been in our present Office for two years, we still get the odd letter incorrectly addressed.

Please note: Our address is –
P.O. BOX 25100,
VICTORIA STREET,
CHRISTCHURCH, 1.

SOUTH PACIFIC SIMMENTALS

For sale this season

- TWO TOP FEMALES
12-20 months
 - ONE YEARLING BULL
- BRED FROM TOP IMPORTED
CATTLE

Enquiries to:-

Murray Cowan, Otorohanga,
Oteawa 888. or
Ian Smith, Huntly,
Glen Murray 466.

THE SOCIETY IS TO BE
CONGRATULATED ON THE
QUALITY AND CONTENT OF
THE 'NEW ZEALAND
SIMMENTAL'; AN EXCELLENT
PUBLICATION.

H. Korman
G.P.O. Box 1464
Auckland.

Herd No. 435 depastured at Kaikohe
Northland.

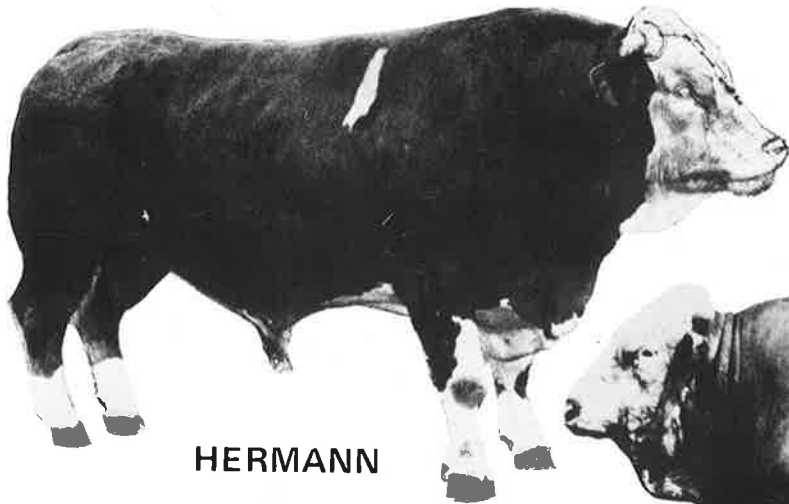
HARLAU SIMMENTALS

Young Purebred Stock
Available from Imported
Bloodlines.

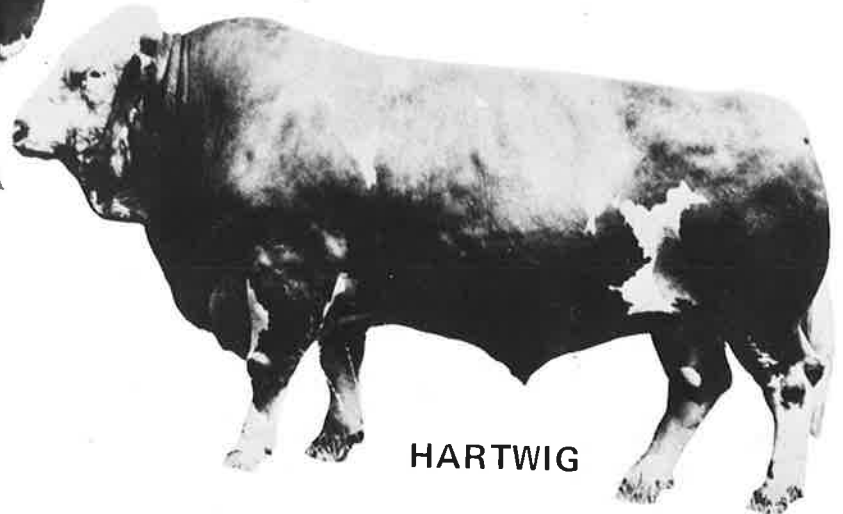
R.H.Kerr

Phone Timaru 88996
Inspection Invited

MMB HERMANN...



HERMANN



HARTWIG

**grows more like his father
every day**

32 HARTWIG SONS weighed at auction averaged 612kg at 482 days.

THE FIRST MMB HERMANN SON TO COMPLETE AN OFFICIAL
PERFORMANCE TEST WAS 656 kg AT 400 DAYS

52kg ABOVE TEAM AVERAGE.

Official Calving Survey: 336 Births only 4 difficult

INVEST IN.... BREEDING,
GROWTH AND
EASE OF CALVING AT.... **\$6.00** per dose

■ BULL POWER

Order from your usual semen supplier or write for further details to
BULLPOWER, PO BOX 9006, HAMILTON NORTH

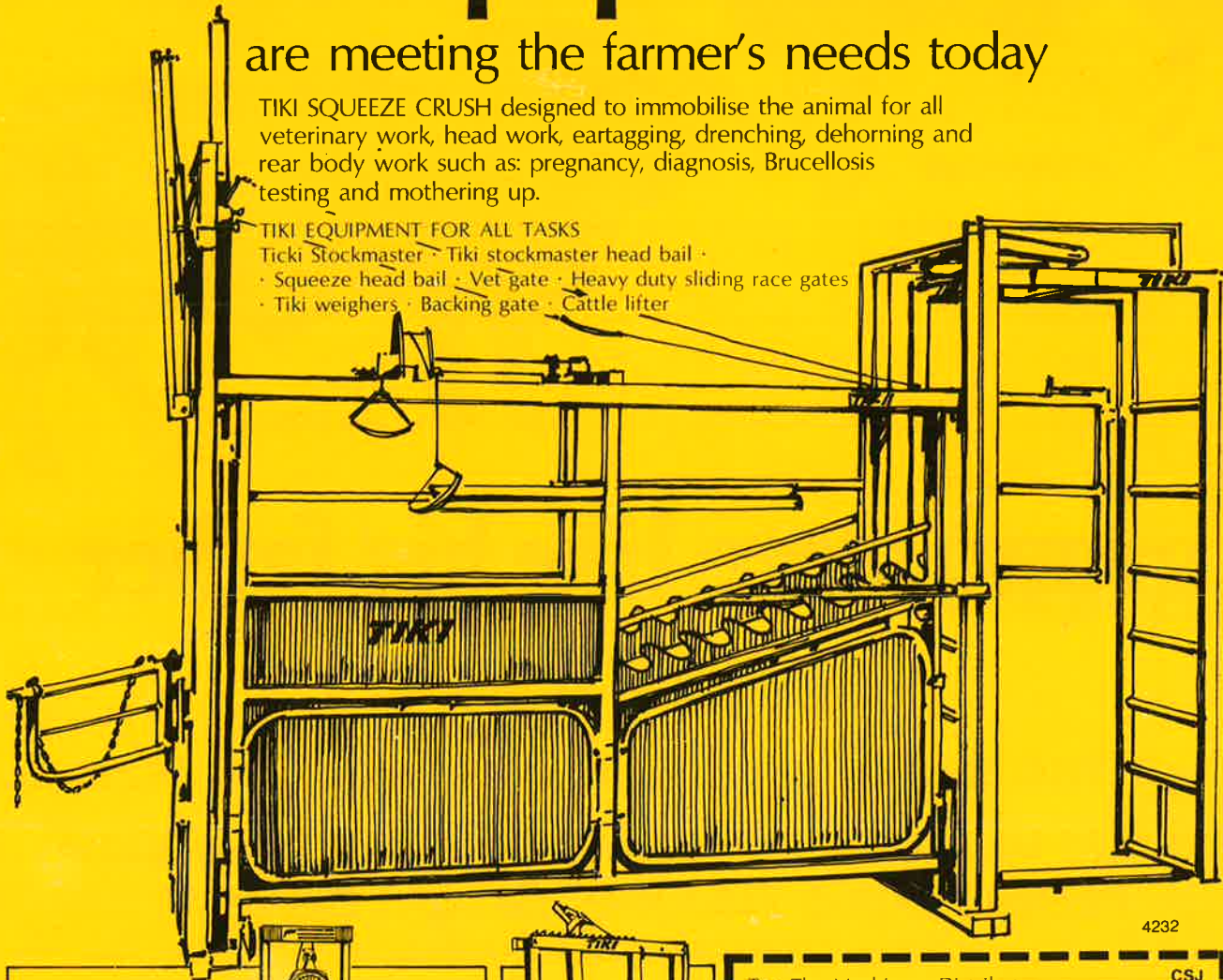
Tiki Cattle Handling Systems and Equipment

are meeting the farmer's needs today

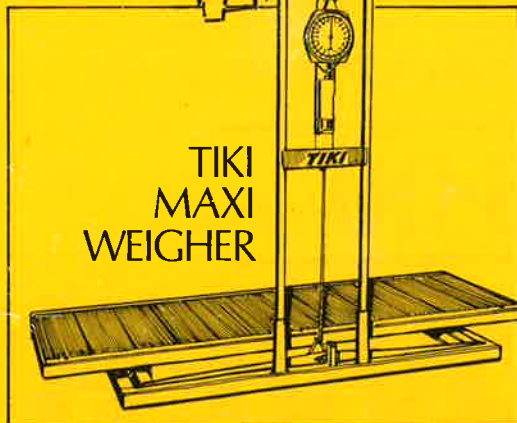
TIKI SQUEEZE CRUSH designed to immobilise the animal for all veterinary work, head work, ear tagging, drenching, dehorning and rear body work such as: pregnancy, diagnosis, Brucellosis testing and mothering up.

TIKI EQUIPMENT FOR ALL TASKS

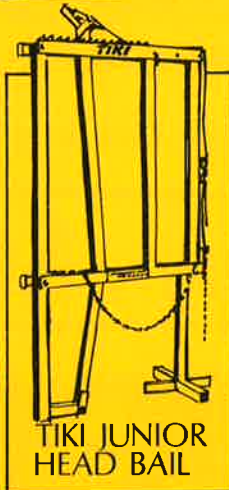
- Tiki Stockmaster · Tiki stockmaster head bail ·
- Squeeze head bail · Vet gate · Heavy duty sliding race gates ·
- Tiki weighers · Backing gate · Cattle lifter



4232



TIKI
MAXI
WEIGHER



TIKI JUNIOR
HEAD BAIL

To: The Machinery Distributor,
P.O. Box 1895, Wellington.

Please send me additional information.

Name.....

Address.....

CSJ

TIKI