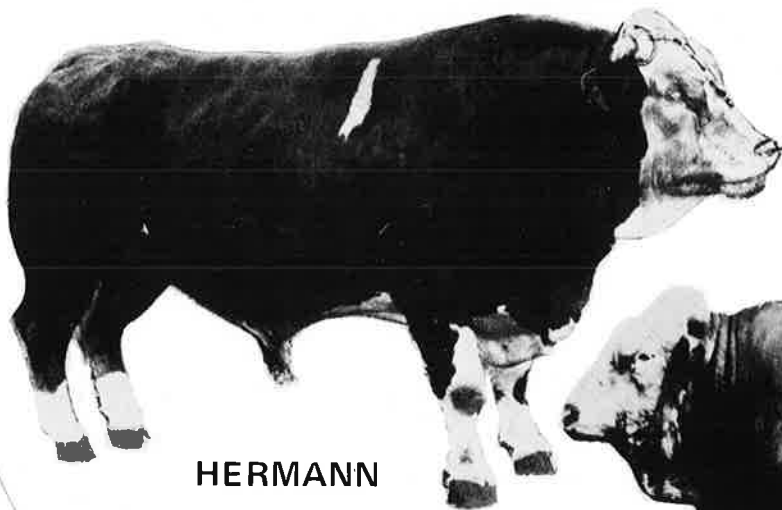


new zealand simmental

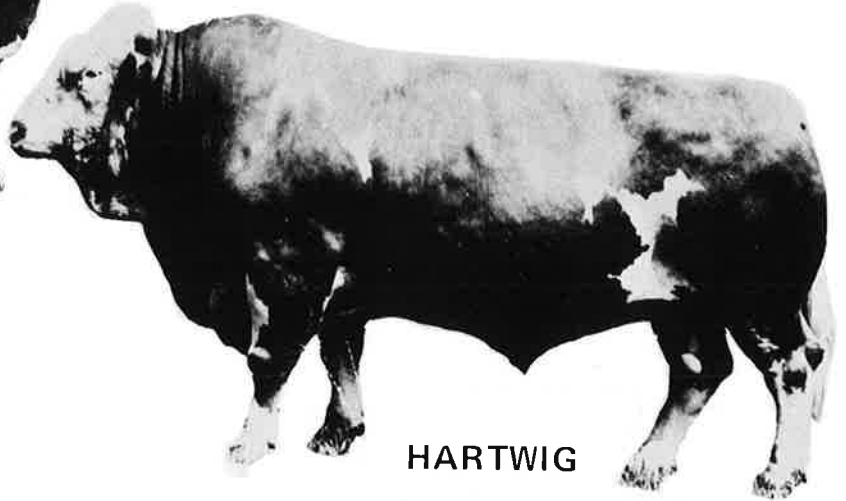


summer issue 1977

MMB HERMANN...



HERMANN



HARTWIG

ows more like his father every day

SONS weighed at auction averaged 612kg at 482 days.

3 HERMANN SON TO COMPLETE AN OFFICIAL
VANCE TEST WAS 656 kg AT 400 DAYS
2kg ABOVE TEAM AVERAGE.

iving Survey: 336 Births only 4 difficult

FEEDING,
GROWTH AND
OF CALVING AT.... **\$6.00** per dose

POWER

supplier or write for further details to
9006, HAMILTON NORTH



THE SIMMENTAL CATTLE BREEDERS' SOCIETY OF NEW ZEALAND (INC.)



118 VICTORIA STREET, CHRISTCHURCH 1, NEW ZEALAND.

P.O. BOX 25·100, VICTORIA STREET, CHRISTCHURCH. Phone 793·166

Contents

Editorial	1
Royal Show	2
Profile	4
Sales	5
A Contribution	6
L & S Purebred Herd	9
Council	10
Technical	11
Club News	13
People	15
Miscellaneous	16

Advertisers

East Dome Simmental Stud
Rutherford Simmental Stud
Pendeen Simmental Stud
Levels Simmental Stud
Bullpower
Scottish Semen Services

Editorial

Within this country and overseas there are cattle of many crosses. For statistical purposes they are divided into two types, beef and dairy. Each in fact overlaps the other.

The Simmental is probably the only breed in New Zealand that can be classified as a dual purpose animal. It has both milk and meat which has been capitalised on in European Countries for many years where many thousands are milked as well as used for meat. This dual factor makes them highly suitable for cross breeding programmes in this country where their contribution to their cattle industry is only now becoming apparent.

Within our membership in this country we have both dairy and beef farmers as we have graded cattle from both base types. Since the breed was introduced some five or six years ago there has been frequent discussion on the difference in type between dairy and beef. At first cross this was most apparent and reflected strongly the influence of the base cow used. As grading has progressed through to third cross or seven-eighth the difference has almost totally disappeared when young animals are compared. At maturity however the 'difference' is again apparent. In the eyes of the beef farmer the lactating dairy animal is quite different.

A dairy farmer spoken to recently put this attitude in perspective. In the dairy industry the farmer takes his profit twice a day. His animal cannot be expected to look like a beef animal, if she does she is not making a full contribution. In the beef industry the farmer takes his profit but once — at slaughter. If his animal does not look like a beef animal it too is not contributing.

Both animals are the same genetic background, the difference is their use.

SEASONS GREETINGS

The Secretary and Staff take this opportunity of wishing you, our members and families a Happy Christmas and a Progressive and Prosperous 1978. We thank you for your patience and kind co-operation over the past year and look forward to continuing his association in the future.

Office Staff

Ian S. Johnstone
(Society Secretary)
Mrs. Jocelyn Gilchrist
Mrs. Nonie Childs
Mrs. Ann Booth
Mr. Len Walker

Council Members

President: R.H. Kerr, Harlau, Salisbury, R.D.2, Timaru.
Vice-Pres.: A. R. Marshall, Tutu Totara, R.D. 1, Marton.
Councillors: R.N.S. Cox, The Levels, R.D. 4, Timaru.
W. Gut, R.D. 29, Kaponga, Taranaki.
H.R. Lowry, P. B. Havelock North.
R.G. Macdonald, P.O. Box 20, Kaipoi.
J.R. Sutton, Waihaorunga, R.D.7, Waimate.
E.W. Turrell, Kaituna, R.D.2, Christchurch.

1977 NEW ZEALAND ROYAL SHOW



Mrs Jocelyn Hall (holding trophy) with her Royal Show Supreme Champion Heifer 'Pendeen Gretel'. Holding Gretel is Mrs Melinda Carter who assisted Mrs Hall in preparation of her entry for the Show.



'The Judge Comments'. R.W. Vincent of Western Australia talks to ringside spectators at the judging. Left to right: W. Black (Waimate), D. Carter (West Melton), L. Busquets (Sydney), J. Cameron (Murray Grey Society), P. Trenoweth (N.S.W.), I. Bonifant (Sydney), P. Linton (DNZL), D. Mactaggart (N.S.W.), C. Watson (DNZL), G. Robertson (Southland), R. Hiatt (Amberley)

1977 NEW ZEALAND ROYAL SHOW

It was perhaps fitting that the 1977 New Zealand Royal was held in Canterbury. In 1972, the Society, in its first year displayed the first Simmentals seen in New Zealand at the same venue. The 'first' was again repeated this year when the breed entered competitive showing at a Royal Show.

In four classes a total of seventeen animals were put forward by breeders from as far away as Southland. Several other entries regrettably had to be withdrawn at the last minute.

The quality of the entries was high and drew most favourable comment from the Australian Judge, Mr R. W. Vincent, from Western Australia. MKR Vincent, who is President of the Australian Simmental Association has been involved in cattle judging for a number of years in other breeds and since the introduction of Simmentals to competitive showing in Australia has judged the breed at a number of the major Australian Shows including Sydney, Melbourne and Brisbane. A three day event, this year's Royal was held in perfect weather and drew record crowds to what is claimed to be probably one of the best Shows ever held in the country.

In addition to competing cattle, the Society, in conjunction with the Canterbury/Westland Simmental Club, mounted an excellent display which drew high interest from the public. A pair of very evenly matched two year old three-quarter bred steers were displayed in a marquee alongside a display freezer containing consumer meat cuts prepared by a Christchurch butcher, Mr David Putt, who was in attendance throughout the Show to talk to people on meat retailing and the type of carcass suitable to the butchers' trade. Outside the marquee two top three-quarter bred heifers, (visually indistinguishable from Purebreds), were on exhibition as were three month old calves.

Highlight of the Show was, of course, the judging which was held in the main ring on the first morning and great credit must be given to our Judge for his thoroughness. At the conclusion of each class, he spoke to the entrants (and those few people who had somehow managed to get into the ring) giving a run down on his placings and what he was looking for. It was a pity that the judging ring was not officially accessible to Members and the public as it is overseas and at some Showgrounds in New Zealand. The Judge's comments were most relevant and educational.

Supreme Champion Animal was awarded to one of the few Members of the Society of the 'fairer sex', Mrs Jocelyn Hall of Pendeen, Hororata, North Canterbury, for her outstanding entry 'Pendeen Gretel', by Scottish Extra Special, a sixteen month old honey coloured heifer. This animal went forward to the Meat and Wool Cup class and against all breeds which included some magnificent mature bulls, was awarded second place in the aggregate judging, a great achievement for the breed in its first public showing and a great reward for the breeder. In congratulating Mrs Hall, credit must also be given to Mrs Melinda Carter who helped in preparation of this entry. As owner of the Supreme Champion Animal, Mrs Hall was presented with the Simmental Society Royal Show Silver Challenge Trophy and miniature at a small function held at the Society Office. It is fitting that one of our earlier (Herd 83) and most enthusiastic Members is the first person to win this Trophy.

Other entrants must also be congratulated on the standard of their entries. Their efforts in bringing an-

imals forward to this Show made it the resounding success it was. To our Judge, Mr Vincent, go our grateful thanks. We trust he enjoyed his visit as we enjoyed having him.

Official Placings were as follows:-

CLASS 475 — Cow over two years with calf at foot or visibly in-calf.

- | | |
|--------------------------------|------------------------------------|
| 1st. Tasman Simmental Breeders | (Balig Celia and calf) imported |
| 2nd. Southern Breeders Ltd. | (Bent Andrewina and calf) imported |
| 3rd. D. S. Crosson | (Leader Amanda and calf) imported |

CLASS 476 — Heifer under two years.

- | | |
|----------------------|-----------------------|
| 1st. Mrs J. C. Hall | (Pendeen Gretel) |
| 2nd. D. S. Crosson | (Risingholme Babette) |
| 3rd. D. S. Crosson | (Risingholme Beverly) |
| 4th. Miss S. Osborne | (Arwood Freda) |
- CHAMPION FEMALE** — Mrs J. C. Hall (Pendeen Gretel)

RESERVE—

Tasman Simmental Breeders (Balig Celia)

CLASS 477 — Bull over two years.

- | | |
|------------------------|------------------------------|
| (1 entry) R. N. S. Cox | (Skerrington Baron) imported |
|------------------------|------------------------------|

CLASS 478 — Bull under two years

(3 entries)

- | | |
|-----------------------------|-----------------------|
| 1st. Maurice R. Carter Ltd. | (Sir Avon Park Extra) |
| 2nd. D. S. Crosson | (Risingholme Daniel) |
| 3rd. R. N. S. Cox | (Levels Galaxy) |

CHAMPION BULL —

R. N. S. Cox (Skerrington Baron)

RESERVE —

Maurice R. Carter Ltd. (Sir Avon Park Extra)

SUPREME CHAMPION ANIMAL —

Mrs J. C. Hall (Pendeen Gretel)

OVERSEAS VISITORS TO THE ROYAL SHOW

As well as our guest and Judge, Mr R. W. Vincent, President of the Australian Simmental Association and Vice President of the World Federation, we were able to welcome several other Australian visitors to our display centre at the Royal Show.

Messrs. D. MacTaggart, Australian Association Vice President from New South Wales, L. Bailey, Councillor of Queensland, L. Busquets of Sydney and P. Trenoweth of New South Wales, spent two days at the Show and took keen interest in the judging and the stock presented. Mr I. L. Bonifant, Secretary/Manager of the Australian Association was also visiting his homeland and spent some time at the Show and with the N.Z. Secretary in the office.

One young visitor had been but a few days in N.Z. and had come a long way. Miss Rosemary McClory of Northern Ireland who is visiting New Zealand as a Young Farmers Exchange Student sponsored by the Meat and Wool Board, was guest of one of our local breeders and was quickly involved in the Simmental scene. She had the honour of leading the Simmental section of the Grand Parade and (to her great embarrassment) was welcomed to N.Z. over the public address system by the parade commentator. We wish her well on her remaining few months in this country.

Profile



*John P. Absalom
of Rissington*

Just over sixteen miles inland from Napier, Rissington Station is situated in attractive Hawkes Bay hill country well balanced with useful flats. The home of John and Star Absalom, who farm in partnership with John's father, Rissington is of over 1900 acres and has been in the family for ninety-five years. Originally taken up in 1882 the property has been reduced by subdivision and the present block was taken over by Mr Absalom senior in 1932.

The property, principally a grazing unit carries in excess of 3500 Coopworth sheep and currently winters over 700 head of cattle, all of which are now of Simmental blood. Rissington, one of the Society's earlier herds (No. 49), first registered half breeds in 1972 and has already over 350 animals in the Society grading-up register with the 1977 calf drop of a further 105 yet to come. All animals on the property are carefully recorded and all progeny weighed. As numbers have increased so has the scope for culling and the stage has now been reached where only proven animals will be carried through.



Some of the Rissington graded-up herd

A recent field-day on the property illustrated well the efficiency of John Absalom's management and the intensity of his breeding programme. Recorded information on 205 animals was produced in cyclostyled form as a handout for those who visited the property. Halfbreeds were divided into base cow breeding and all calf weights and sires were recorded as were threequarterbred heifers and calves. Of interest, twenty-four 20-month threequarterbred heifers produced an average liveweight of 490 kilos (or 1080 lbs.) Thirty-five 2½-year steers averaged 602 kilos (1327 lbs) and thirty-four 20-month half and threequarterbred bulls averaged 520 kilos (1146 lbs.) The production of such information backs up the visual impact which can so easily be questioned.

The future of the Rissington grading-up programme includes the continued use of the top halfbred cows to provide continuing new blood into the system. Simmental cross animals will be fed into the commercial sector of the herd, providing steers and weaners for the commercial market, and the purebreds already on the property supplemented by pures from the grading-up programme will establish a stud herd for the breeding of bulls.



In self assessment, John Absalom looks at himself as a commercial man raising seed stock for the commercial producer. He considers this all revolves around accurate recording of the highly heritable factors, and if the New Zealand Simmental is going to make its mark on the New Zealand beef scene it will not only have to show its worth in the show ring but more importantly to the end user with compulsory performance recording for all registered cattle. As an example of desirability he quotes the American Simmental Association who are really stamping the Simmental as a PERFORMANCE BREED and feels we could do well to study some of their programmes and where applicable apply them to New Zealand situations. It should be our aim to create the breed to put the profits back into the beef industry.

Rissington, committed to production of Simmental cattle on a large scale, is already seeing returns in top prices for steers and weaners through local markets. An active member of the Hawkes Bay Simmental Club, John Absalom ably assisted by his wife is yet another example of a successful Simmental Breeder.



A top seven-eighths yearling heifer.

NATIONAL SALE 1978

On Thursday 24th November the Sales Committee met in Palmerston North with representatives of the Stud Stock Departments of the major Stock Firms. Initial discussions were based on the potential number of entries and the most suitable time to hold such a sale. It was considered that the main emphasis of this sale would be directed at putting Purebred bulls into the commercial market and to do this it would be prudent to hold a sale at a time when the demand for bulls was highest. From a historical point of view all other breeds based their major sales in the July/August period and it was the considered opinion of the Stud Stock Representatives that we would be wise to follow suit. Initially the Sales Committee had considered holding the Sale in April to cater for the Australian demands for bulls in the southern areas, but it was decided that our home market was of greater importance in view of the current marketing situation and that bulls would be available to Australian buyers on a private treaty basis if they so wished. On this ground it was resolved that the 1978 National Sales would be held at the Palmerston North Showgrounds selling centre on Thursday 3rd of August.

Entries for the sale will consist of Purebred Bulls and females, seven-eighth females and a small number of top quality seven-eighth bulls. While finer details have not been finalised a similar situation will follow this year's sale in Christchurch whereby South Island cattle going to the North Island will be freight subsidised.

A further meeting of the Sale Committee will be held towards the end of February when Conditions of Entry will be drawn up.

Private Sales

Since our last issue there has been but one private sale of Simmentals which was advertised to Members via our Journal and a circular. Held by the Kaiapoi Cattle Co. in North Canterbury it must regrettably be reported that this sale was anything but successful. Mr Macdonald had gone to great trouble to present cattle in good order under terrible winter conditions. Held on what must have been one of the first fine days for months the offering of Charolais and Simmentals failed to attract a buying gallery of any strength and passings were frequent particularly in the latter part of the sale.

Nine Purebred Simmental Bulls offered on behalf of outside vendors averaged \$705 with a top price of \$1200.

Three three-quarter Bulls, average \$216.

Three exportable Pure Heifers averaged \$2350 with a top price of \$3000.

Nine non-exportable heifers (all unmated) failed to meet the reserve and were unsold.

One in-calf mature cow which had been transplanted was sold at \$3000.

One polled seven-eighth heifer of about 10 months sold for \$1000.

Overall the entries were presented in surprisingly good condition in consideration of the season and the feed situation. The result was disappointing and our sympathy is accorded to Mr Macdonald who worked hard in the face of currently negative marketing conditions.

A Note on Presentation of Sale Animals.

At the recent Sales Committee Meeting in Palmerston North some discussion was held on the presentation of animals in a National Sale. One of the country's leading auctioneers commented that from an auctioneers point of view they were expected by the Vendor to produce a maximum price for his or her animal and experience had taught him that this was only possible if he had the subject matter to work with. One can be the best auctioneer in the world but if an animal is ill prepared, a bad leader or uncontrolled it is discounted accordingly.

In sales of many breeds it has been shown that the animal well presented is the one that gains the best price. This has been illustrated graphically both in New Zealand and overseas. We are a relatively new entrant to the Sale arena and experience is perhaps the best tutor.

It should be the objective of every vendor to present his animal to the best of his ability if he expects the auctioneer to do the job properly.

U.K. SHOW AND SALE 'SIMMENTAL 78'

Visitors to England in May 1978 are invited to visit 'Simmental '78' on 4th May, at Bingley Hall, Stafford. This is planned to be the biggest display of Simmental pure and crossbred cattle ever held in the U.K. If you contemplate being in U.K. at about this time contact the Secretary for further details.

STEER AND HEIFER SALE — 20th JANUARY 1978

The Manawatu/West Coast Club are organising a Simmental Steer Sale at Feilding and are calling for entries. Hawkes Bay conducted a similar type of sale last autumn with excellent results. If you have good quality steers available for this event please ring Neil Barnett, 630 Halcombe, as soon as possible.

SUPPORT YOUR CLUB AND THE BREED AT
THIS SALE.

AUSTRALIAN ASSOCIATION ANNUAL SALE 'SIMMENTAL ROYALE' 1978

This annual event will be held at 'The Steading' 48 miles from Sydney on the property of Mr P. Trenoweth, on Wednesday 15th March 1978. Any New Zealand Breeder who wishes to enter animals in this Sale is asked to get in contact with his Stud Stock Agent or write direct to: The Steading Proprietary Ltd., Private Bag, P.O. North Richmond, NSW 2754.

The sale ring has long been known for the 'quick quip' from the auctioneer's rostrum and many a sale has been lifted in this manner. A recent cattle sale saw light relief of another kind when an entry, dissatisfied with the progress of his sale suddenly and without warning vented his displeasure on the auctioneer's rostrum and then decided he would get 'up there' with them himself. The fluent call of one of the country's leading auctioneers, Mr Warren Morpeth, froze on his lips as he literally flew into the rafters of the sales building, self preservation uppermost. Auctioneers assistants likewise dispersed at incredible speed leaving the fractious animal 'King of the Ring' to the uproarious delight of the gallery.

The Numbers Game

A CONTRIBUTION

By A.N. Izard, Pleasant Point, South Canterbury

THE NUMBERS GAME

Recently I returned from a trip overseas having had the opportunity of looking at many aspects of Agriculture — dairy, beef, citrus and a great variety of crops. The trip was over quite diverse types of country and conditions — from the humid difficult country of Western Samoa to the endless fertile downs of France and from the highly productive irrigated plains of Arizona to the arid hungry soils of Greece and Italy. In between were, of course, the cattle areas of Kansas and Nebraska and the homely farming scenes of Scotland and England and finally the home countries of the Simmental. Aeroplane and rental car provided the transport in the mad rush through the States, borrowed car in the United Kingdom and dormobile in Europe — three and a half months of hectic but pleasant travel.

As must always be the case, careful preparations were made prior to leaving and through the great help of our Secretary, Ian Johnstone, and his contacting the Simmental Cattle Societies of the United States, United Kingdom and European countries, the pace was set — thirteen countries, 10,000 miles driving and many contacts!

I was intrigued by the project of "Cattle under the Coconuts" in Western Samoa. An endeavour to utilise the sappy, rather unhealthy, long grass under the palm trees. The Western Samoa Trustee Estates Corporation (Westec) introduced mostly Herefords for this purpose. However, after the first calving it would appear there has been great difficulty in getting the cows in calf again and neither cow nor calf seem to be coping at all well with the environment. A place for the Simmental? — I have my doubts!

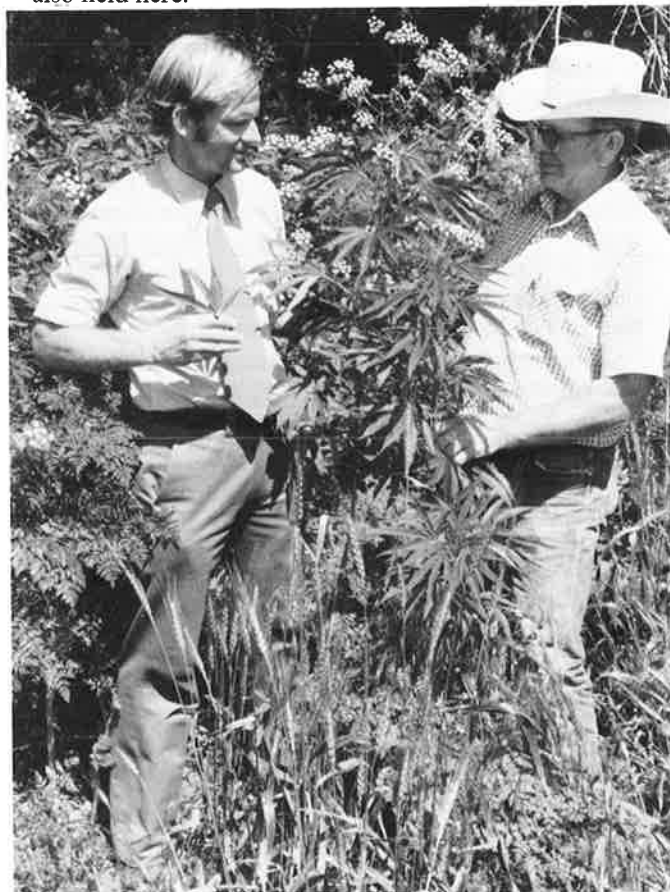
On to the more interesting and stimulating side of the trip — a look at a number of feedlot operations, breeding programmes and research centres in Kansas and Nebraska. Also my impressions of the Simmental Organisation in these parts of the States. I must admit my first impression of our counterpart there was one of enthusiasm for what they're doing and how they go about it and I felt somewhat disillusioned with our own results. When you are confronted with their well presented, glossy publications with the large bulk of figures within them one wonders why as much information is not available from our own stock. All the answers are in numbers. Let us reflect on a few approximate figures and then think of our own in comparison — 353,000 registered cattle, 9,400 breeders, 88,000 new registrations this year, 40,000 registered Simmental and cross cattle sold last year and an active Membership fee of \$100! Weigh all this up, plus the American ability to advertise and sell and one finds the numbers game to their advantage. What a large genetic pool from which to select and prove breeding bulls and cows and what a lot of dollars!

Should we be using more American proven Canadian Sires? I believe our Society is doing very well but we are, by necessity, going to have to record and select our stock very carefully now and in the future. I'm sure we can do it and come out on top. The activities of the many "clubs" must ensure the interest and success of records and must play an important role in the promotion of the breed.

While travelling by air over the length of the United States I was very impressed and overawed by the sheer size of the place and wondered what would happen to

little New Zealand if all stops were pulled out and they produced as much as they could.

First cattle stop was in Manhattan, Kansas, where I visited the Kansas A.B. Centre (Associated with the State University but self supporting) and Simmental enthusiast and breeder, Ancil Armstrong who used to be the Centre's Manager. He now runs a wholesale semen organisation (New Breeds Industries) — a business co-operating with farmer/rancher studs. He has a small farm himself and through his association with the University and another large rancher, and with careful selection based on genetic merit is, through the use of transplants, building up a very impressive pure herd. Transplant costs are similar in cost to ours but the returns there are somewhat better! I saw some fine bulls at the A.B. Centre — sons of Extra, Parisenne and Abricot. Cojac, the first polled Simmental (15/16ths from Polled Angus base) is also held here.



Mr Alan Izard (left) with his American host in Kansas is shown a new variety of 'grass'. Marijuana is a noxious weed in this area.

A very interesting visit to the Kansas State University followed and it was pleasing to see all their stock in the research programmes either half or threequarter Simmentals. Current research is on ensilage, feed mixes and early weaning and its related advantages on the cycling of cows. A study on the use of "dosed up" cows instead of marker bulls, using testosterone, was of interest. The marker cows were proving to be cheaper and more satisfactory to all concerned, including the cows being marked! The early weaning of calves — from 3 to 11 weeks — was giving interesting results in several areas.

- (a) a saving of up to 70% in feeding a weaned cow.
- (b) 15 out of 20 cows in calf in the first 11 days of calf removal.
- (c) Late calvers were brought into line with the herd average calving date.

Simultaneous trials were running using drugs to synchronize the cows' heats but not proving as effective as early weaning. The weaned calves were put onto a high protein pig type meal and high quality pasture. Results so far show no significant weight difference at normal weaning time.

On the Bud Hills' property with American hospitality at its best. A large Sunday family gathering, a detailed tour around the 2,500 acre ranch, a study of the grasses and soils (including a new grass to me — Marijuana) and look at the recording and P.R. side of the breeding operation, all made a very enjoyable and valuable visit. The breeding up herd is based on herefords and he is selling a good number of threequarter and seven eighths bulls for commercial use. Each year a questionnaire is sent to current and prospective clients asking such questions as calving results, progeny weaning weights, calving results, the type of bull preferred for the next season and any suggestions or comments — a great public relations exercise apart from the use of statistics to the breeder. The herd numbers about 600. There was just time to look in at two slaughter-houses and it was pleasing to see a great demand for the Simmental-cross cattle which are doing particularly well in the feed lots. I also spent some time discussing beef prospects and feed costs — related to the U.S. farmer and to us as an exporter. My view is one of optimism. With the large breeding cow kill of the past few seasons and the lengthy drought combined with the very low grain prices now, must give every indication of a dramatic downturn in grinding beef production. I would like to think we could see a large increase in our boner and lean beef prices by June-July, 1978.

There were more places I could have visited in the States had time permitted, and on another trip would certainly make allowance for a few more weeks. The arrangements made by the American Simmental Association to visit the few places mentioned and many others were superbly done and the hospitality was there to match.

Time and space won't permit me to cover in any detail my trip through Europe, but suffice it to say it was sheer pleasure to stop on the roads and mountain passes and to be able to wander up to a fine group of contented Simmental cows to give them a pat on the back.

I enjoyed the opportunity of seeing a large number of Simmental herds in Scotland and meeting and staying with many farmers who I'm sure will be known by many of our Society members here. To be able in many cases, to see three generations of cattle was of great advantage in the picking of possible imports. What a pity the cost of transport is so high because it appeared to me that there were some excellent stock available for purchase at reasonable prices.

Having been back a few months now and being able to can only feel a great confidence in the Simmental. We know the numbers of the breed are high throughout the world and it will be up to us to make the fullest use of all the breeding experience and recorded information available.



John Robins of Western Southland with Tasman Simmental Breeders' prize-winning cow 'Balig Celia'.

Canterbury (as have other areas) had a long cold and wet winter, thankfully it is now fine. At the first peep of sunshine for several weeks, one of our news reporters asked a Canterbury farmer what he thought of the change in weather? "A refreshing change" he replied, "but it has its side effects. I think I'm suffering from gumboot withdrawal".



Royal Show competitor, Oakliegh Osborne of 'Winfield', Canterbury, with his entrant 'Arwood Freda'.

'RUTHERFORD' SIMMENTAL STUD

Redwoods Valley Nelson

INSPECTION WELCOME

Our Farm Manager Rupert Martin (phone RDV 744 through the Nelson exchange) cordially welcomes your inspection of this Rutherford Simmental Stud Herd which is one of the largest grading-up herds within New Zealand.

Your enquiries are welcomed and inspection can be arranged to suit your requirements.

A limited amount of semen is available from BLYTHE GARIBALDI, who is by AVONCROFT ASTER out of KINLARTY LAURA, bred by Mr R. G. Macdonald.



'Rutherford' Simmental Stud Farm
Redwoods Valley, Nelson

Postal Address: Richmond R.D.1, Nelson

A Division of the TNL Group Limited



EAST DOME SIMMENTAL STUD

**NOTED FOR
PRODUCTION OF
TOP QUALITY PUREBREDS**

**YOUNG STOCK
AVAILABLE**

INSPECTION WELCOME



EAST DOME FRANZ
Sold to Australian Prime Minister,
Mr Malcolm Frazer

WOODFORD ROUSE FIVE RIVERS No. 3 R.D. LUMSDEN Tel. 86R LUMSDEN

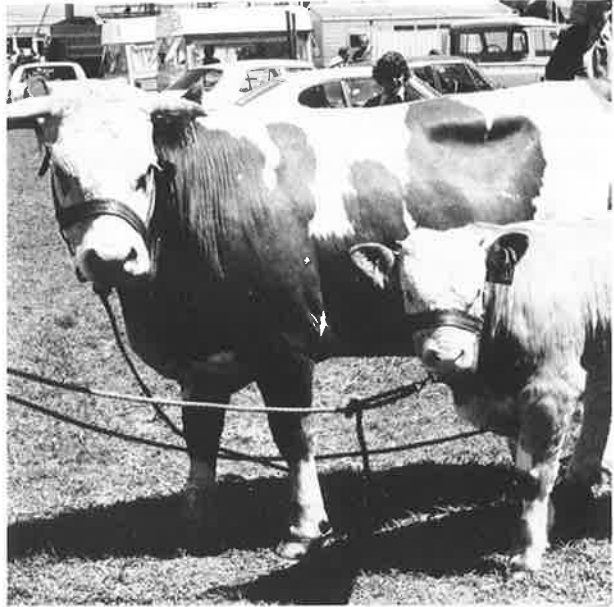
Lands and Survey Purebred Herd

Most Society Members will remember the strong interest for allocation of a heifer from the direct importation from Germany in 1974. The Government on behalf of the Society Members brought into the country 18 Purebred heifers. At the same time they saw fit to bring in a similar number of animals for themselves. The late Mr John Engles of the Department of Lands and Survey travelled to Europe with the two Society selectors and in conjunction with them selected the total shipment of thirty six. Prior to release from quarantine the shipment was equally divided between the Society and the Department.

On release the 'Department' herd was moved to Paekakariki where it has remained since.

Few Society people have seen the animals, not because the Lands and Survey have been unforthcoming but largely due to the fact that their whereabouts were unknown to most, and administration travel has not been through the particular area where they are domiciled. Recently the Secretary was in the North Island and at the invitation of Mr John Allen and Mr Julian Rodda of the Department a visit was made to the Lands and Survey Paekakariki block. Some fourteen cows of the original shipment had been assembled close to the homestead for inspection and with their calves were a most impressive sight. The cows have grown out well and amongst them are some top animals. The Department, in the first year they had the Simmental herd, put forward six animals for ovum transplant and from these operations obtained over thirty calves which with natural calving boosts numbers by well over forty. Two further animals will be ovum transplanted this year.

In the initial stages the herd had a few problems mainly due to adjustment in environment and pastoral grazing which were completely strange to them. Under the diligent management of the property Manager Mr Joe Plunket the herd settled down and the Department is well pleased, and justifiably so, with progress. The herd is favoured for temperament, calving ease and growth rate and is being carefully recorded by the Department.



A Lands and Survey Ourebred German Cow and calf from the Paekakariki herd.

Additional to the cows and calves assembled two yearling heifers and two yearling bulls were also presented for appraisal, all haltered and tied. It is of interest that the two heifers were entered in the all breeds section of the recent Manawatu A. & P. Association Show at Palmerston North and were placed second by one point. The Department also very generously made available one of the top cows with her calf for display by the Manawatu and Districts Simmental Club which drew much favourable comment at the Show. The Club, as is the Society, is most appreciative of this gesture.

Mr Allen the Field Superintendent for the Department of Lands and Survey has issued an invitation for any Society Members who are interested to visit the property which is easily located on the main north road from Wellington. Travelling north on the West Coast the entrance to the property is two miles north of Paekakariki on the right hand side of the main road just where it crosses the railway line. It would be a courtesy to phone Mr Plunket the Manager, prior to calling. He is most welcoming, but has a large block of country to administer and is obviously a very busy man. His phone number is PAEKAKARIKI 8018.

The full herd of eighteen original imports are being maintained and with the yearlings and this year's calves this herd will become an important unit in the Society's register. The Department hope to be able to provide us with details of their records in due course. The enthusiasm of those who are involved with this herd and its administration is most rewarding and the Department must be complimented on what they are doing.



Left to right: Neil and Derian Barnett, Jock McKay of Halcombe with Joe Plunket (Farm Manager) and John Allen (Field Superintendent) on the Lands and Survey property at Paekakariki.

In the 'paper war' of any office you get some odd documents and the Simmental office is no exception. We get A I Shed sheets that have obviously been close to the action, registration forms signed with gumboot treads, but one of the best we have had for a while is an A.I. docket which carries in bold writing, "Cow 116 escaped, not inseminated, too Bloody wild."

The Council

A meeting of Council was held on Friday morning the 11th November. It had not been possible for Committees to meet prior to this meeting as some members had been overseas.

Matters considered by Council are reported in order.

Finance

Mr Kerr presented the quarterly balance to the end of September which reflected a maintained income. Expenses were increased in some areas but these were accountable. Postage, printing and telephones all reflected national increases. A meeting of the Finance Committee will be held towards the end of the year to give emphasis to accounting and budget matters.

Annual Meeting 1978

The Secretary reported on arrangements for the 1978 A.G.M. This topic has been reported elsewhere in this issue.

National Sale 1978

Preliminary plans have already been made for the Sale and the Sales Committee will meet during the month in Palmerston North to finalise arrangements. Entry forms for the Sale will be available on request from the office and entries will be called for once final details have been completed by the Sales Committee.

North Island Visit by the Secretary

During the latter part of October the Secretary visited several areas in the North Island and met Club Committees in the Manawatu, Taranaki, Northland and Hawkes Bay as well as calling on individual members in most areas. The Secretary reported that the trip was well worthwhile but that future visits should be scheduled to spend more time in each Club area.

Dehorning of Cattle

It had been suggested by some members that it should be mandatory to dehorn all Simmental cattle. The Council considered the right of individual choice should remain but suggested that where possible cattle should be dehorned at an early age. Under government regulations it will eventually become necessary to dehorn all cattle going to the works although some exemption will be allowed for horned stud cattle.

The horn growth of the Simmental is for some reason most variable and there are some most odd configurations about. A polled animal presents uniformity and if the animal is properly dehorned at an early age it has little effect on it. Dehorning is recommended where possible.

Overseas Dairy Sires

The office has endeavoured to stimulate some interest overseas for provision of bulls with a proven milk factor in such countries as United Kingdom from where semen can be imported for our dairy industry. R. N. S. Cox who was recently in Europe, followed up our request and advises that there was some sympathy to our cause and the possibility was being investigated by the Swiss.

Fees for seven-eighth heifers

Some criticism had been levelled at the Council for not reducing the fee for seven-eighth heifers when their status was dropped to a graded animal from purebred. The matter was discussed by Council at its November meeting when it was pointed out that it was a matter of revenue and not of status. Some members had regrettably misinterpreted a comment at the Annual General Meeting that fees would be reduced which was not in fact the intention. It was, however, agreed by the Council that the fees as currently set were perhaps out of balance on grade status and that this matter would be considered by the Finance Committee when they next met.

The Society overheads continue to increase through national increases common to all and if promotional plans are progressed as intended through Clubs it stands to reason that fees will not be able to be held at the same level indefinitely. Any increase would be kept to a minimum. Overall our fees are considerably lower than a lot of the major breed Societies — the Australians for instance have an Annual Subscription of \$50 with Purebred Registrations of \$50 for heifers and \$100 for bulls.

Ovum Transplant Donors

Arrangements were already underway for inspection of purebred and graded cattle used in ovum transplant operations. Australian Inspectors had already carried out their inspections which had resulted in very few rejections. Owners of cattle going forward for transplant are reminded to advise the office of the date and centre to which their animals are going.

Frozen Ova — Imports and Exports

The Council resolved that progeny resulting from frozen ova would only be registered after presentation of authentication of fertilised egg removal, stating donor and sire by the Society in the country from which the frozen ova was obtained. Likewise where frozen ova is exported to countries such as Australia a similar requirement is likely to be introduced. Transplant Centres or veterinarians removing fertilised eggs for freezing and eventual export will be required to provide the N.Z. Society with documentation similar to that used in normal transplant operations. Where frozen ova is exported a fee of \$15 per unit will be charged for processing a despatch of documents to the Australian Simmental Association.

Recording, National Beef Improvement Committee

Mr Sutton reported that plans were being implemented to restructure Beefplan administration and to introduce allied and complimentary recording systems suitable for all breed requirements. At present the appointment of delegates to the National Beef Improvement Committee was under action and when this has been completed it is hoped progress would be made in setting up the proposed programme. The Council appointed J. R. Sutton and A. R. Marshall from the Technical Committee to continue vigilance on this matter. Representation for implementation of a suitable programme will be continued.

CLUBS

The Club scene continues to bear fruit and somewhere in the country at almost any time some club activity is going on. Some of these things will be just an extension of normal farming practices but it is interesting to observe the contacts that have arisen in each Club area. People tend to do things collectively instead of individually and members are now getting to know each other when they gather together. The result is better gatherings, displays and organisation and some understanding of what it is all about.

Obviously in a Society as large as ours there will be some people who for one reason or another decide not to continue with the breed — they sell their farms, change their objectives or just lack interest. In many cases there are cattle to be disposed of and as grading-up progresses some of these are of good quality. If you decide to sell animals or dispose of your Simmentals please give other members a chance of purchasing or at least perusing your stock. Recently a line of cattle were disposed of because the vendor could not find a buyer through normal channels. It transpired several people in the same Club area were looking for similar animals to increase their herds but were unaware these animals were for sale. If you want to dispose of good stock contact your Club Secretary.

On the subject of Club Membership, it has been brought to our notice that some people who have been listed in a Club area are in fact closer for convenience of travel to an adjoining Club. If this is so please do not hesitate to let us know and we will change your listing so that you get information on the other Club's activities. The Club boundaries are not hard and fast and any member is free to be associated with whatever Club he or she wishes.

At present we are drawing up revised lists of all Clubs and each member will be sent a copy as soon as printed.

The Chairman for each area will be sent a copy of all lists.

Northland

This Club met recently at Whangarei and the Secretary was able to be present to discuss the A.G.M. with them. Their plans are already well advanced and this will constitute their main project for the coming year.

Taranaki

The Secretary met the Committee of the Club at Kaponga recently. Their main immediate project was a display at the Stratford Show which will have been held by the time this issue is printed. An industrious group, the Club have decided to make up their own display pens and I have it from good authority, some extended evenings have been spent in a workshop in 'darkest Taranaki' over the past few weeks.

Wairarapa

This area has taken a terrible 'pasting' over the last winter and while we said we would publish something in this issue we have not pressed the matter as the few members in the area have enough to do in organising their properties after winter devastation.

Waikato & Districts

In September, an evening meeting was held in Cambridge at which slides were shown and as guest speakers, personnel from Semen Centres gave information on sires available for this season. More recently the Club held its Annual Meeting following a farm walk on the property of Mr Roy Smith near Lake Karapiro. Although no official report has been received on this visit, the Secretary has been on the property and Club Members doubtless will have been greatly impressed with what they saw. A beautiful property set in hill country with large areas of native bush, Mr Smith has what could be rated as one of the best graded herds of Simmentals in New Zealand.

Any member visiting the area who is interested would find it most worthwhile to visit this property. By courtesy, of course, we ask that you phone Mr Smith, MAUNGATAUTARI 889.



Simmental graded cattle on the property of Mr Roy Smith in the Waikato.

Hawkes Bay

The Hawkes Bay Club again mounted a display of cattle at the Hastings Show. Including Purebreds and seven-eighth heifers together with three excellent steers the display was once again a credit to this Club and drew constant interest. Venue for the 1978 Royal, the Club is already planning big things. North Island Purebred breeders are urged to keep this event in mind.



'Beauties and the Beast'. Tony Thompson's (Waipukurau) two small daughters exercise their Purebred Bull at the Hawkes Bay Show.

Club News

Manawatu/West Coast

Secretary Neil Barnett writes with enthusiasm on their display at the recent Manawatu Show:-

"I am very pleased to be able to report, on behalf of our club, that our display at the Show this year was met by a great response by both the general public and the farming community.

It seems quite obvious that people are now coming forward to look at and discuss the breed rather than standing back and pointing at the cattle. More and more people, it seems, are becoming aware of their presence and are genuinely interested in finding out more about them.

Two heifers, from Lands and Survey (Wellington), competed against Hereford and Red Devon cattle in a 'pair of Heifers Class', and were very unlucky not to win, but came second by one point — our congratulations to you.

Our Committee would sincerely like to thank those who helped with our display. A special thanks to those at Lands and Survey who supported us so enthusiastically."

Members are also asked to note that this Club will hold two FIELD DAYS over 14th and 15th January 1978.

Venue: N. J. Barnett's property, Halcombe, Phone Hal. 630.

On view will be:-

8 Purebred cows and calves

4 Purebred Heifers

2 Purebred Bulls

7/8 Heifers

46 other graded-up females and calves

50 steers

These animals represent
progeny from many Sires.

A barbecue is planned with this event which will give Club members and friends a chance for a get-together involving their families. Visitors from other areas will be most welcome. A detailed circular will be sent to all Club Members shortly. If you are visiting the Manawatu in January and would like to go along, give Neil a ring.

Canterbury/Westland

The Club gave strong support to the Royal Show display providing manpower for erection, manning and dismantling for which the Society is most grateful. The Annual Meeting of the Club will be held at the end of November and will be linked in with a timely lecture by one of the Meat Board's senior meat graders on carcass grading and meat marketing.

Elsewhere in this issue we have reported the success of our competitors in the Royal Show. We also mention here individual participation of Club members in local shows. Mr D. S. Crosson from Mid-Canterbury put the breed before the public at the Ashburton A & P Show by entering several purebred animals. Further north, Guthrey Holdings and Mr R. E. Hiatt both entered cattle at the Amberley A & P Show. The three breeders are commended for their enthusiasm in presenting their animals on a local basis.

Southland/South Otago

The Club are at present in the throes of organising a display for the Southland Show (6th/7th December) and will coincide their Annual Meeting at the same time. We hope to have material on these events for the next issue.

Marlborough/Nelson

The Club had hoped to introduce Simmentals at the Blenheim Show but they too had their share of a hard winter and the animals available were not then up to standard. A recent report however, advises that they have plans to enter local meat competitions in the autumn and it is the intention of the Club to present a Simmental Challenge Cup for this event.

South Canterbury/Otago

The Annual Meeting of this Club was held in Timaru on Friday 18th November following a most successful Field Day at the Levels and Harlau where animals of all grades were presented for discussion. The gathering was well attended by Members and families who enjoyed a buffet meal prior to the meeting in Timaru on Friday evening. Guest speakers were Mr Alan Izard of Pleasant Point and Mr Dick Kerr of Harlau both of whom had recently returned from overseas trips. A report on Mr Izard's visit to the United States appears elsewhere in this issue.

Mr Kerr reported briefly on the British scene, the breed, he said had not established in Britain as strongly as the Charolais, mainly because the latter had been there a lot longer and because the main line of Simmentals bred in Britain had been exported to other Countries. However, with a new approach to promotion and establishment of Clubs, similar to our own setup the breed was becoming more established and recognised.

At the meeting of this Club it was decided that the Otago sector of the Membership would form themselves into a separate group as they were too far away to give continuing support to the Timaru group. The Council supported this move as it was felt this area was an isolated pocket of members.



Philip Kerr, Secretary of the South Canterbury Club, addresses visitors at a recent field day at Harlau.

GERMAN IMPORTED PUREBRED MILKS WELL

A Purebred heifer from the 1974 direct importation from Germany has performed well for her dairy farmer owners, K. J. Schumacher & Co. of Stratford, Taranaki.

In her first lactation her production records are as follows:-

Milk	Fat %	Butterfat	Days	Prod/Index
5266 litres	3.6%	118 kgs	294	144
11,900 lbs		(413 lbs)		
(approx)				

Her highest official test-day milk was 55lbs of milk although she was personally recorded at 62 lbs for one day. Her lactation was from October through to August.

It is of interest that in the personal selection of heifers at Somes Island Quarantine Station the Schumachers placed her 8th on records in the shipment of thirty six. On visual appraisal they placed her 2nd out of the eighteen available to the Society, mainly on udder inspection and drew her from their ballot placing of No. 12.



Not only has 'Salisbury Princess Jutta' produced a high milk return but excellent progeny. Her bull calf 'Salisbury Grandeur' has shown promise since an early age and is at present held by Ambreed at Cambridge who are most impressed with the potential of this young bull. 'Grandeur' sired by Bavarian has recently been added to the Society's Sire List.

This information confirms indeed the dual purpose characteristic of the Simmental.



Salisbury Grandeur'

FIRST NEW ZEALAND BRED PUREBREDS

We have arrived! The long talked-about goal of grading-up to purebred status has been achieved.

Congratulations to 'Westland Southland Simmental Breeders' on the arrival of what could be the first Purebreds from a graded herd in Australasia. Two 15/16th bulls were born on the Southland property of Wairaki Station on Saturday 3rd December from ovum transplant recipients. From a Friesian base the calves are by the sire Usch and have in their pedigree - Baron, Herod and Neff. Share owners of the calves are D. Marshall, L. Dobson and J. & G. Robins.



Rest hour for two newly-arrived Pures. Co-owner, Mrs Gay Robins, takes advantage and joins them.

An Historic Note

One of our North Island Breeders Mr N. Barnett of Halcombe entered an eighteen months old steer in a beef competition in Feilding earlier this year. The animal killed out at 294 Kg (640 lbs) and returned \$207 and although it graded P1 it was disqualified as overweight for age.

Thirty five years ago (1942) his father, the late Mr A. A. Barnett entered a rising three year old steer in the Wanganui A & P Association chiller beef competition and although placed third on the hoof, was unplaced out of 26 entries in the carcass competition because it was too heavy (the carcass weight is unfortunately not recorded). The man who initiated the competition described the animal as "a paragon of conformation and I have never seen his superior."

It is interesting to note in the newspaper report on this competition a strong plea was made for a class which would give emphasis on quality, plus weight for age.

Simmental Breeding does have its rewards

In our Membership we have breeders with various degrees of involvement. Calving to most is just another event in the farming calendar. To one of our Members it has been a memorable event. Mrs Pam Wards of Leeston, Canterbury has but two cherished three-quarter heifers and only one of mateable age.

On the 15th September last this heifer produced for its owner a seven-eighths heifer. Congratulations Pam, long may your success continue.

Miscellaneous

SECOND WORLD SIMMENTAL CONGRESS 1978

The following article has been sent to us by the Canadian Simmental Association who are host nation for the Second World Simmental Congress. Preliminary plans are already being formulated to organise a tour of New Zealand Breeders and interested people to Canada for this event. At this stage it is proposed that the tour will be of about 20 days duration including visits to the United States. Delegates who wish could continue on to Europe if so desired. Anyone who might be interested in this tour, which would be a tremendous experience, is invited to write to the Society office for further details.

In July 1978 Simmental Breeders from around the world will be gathering in Calgary, Alberta, Canada, for the Second World Simmental Congress.

Your hosts, the Canadian Simmental Association, are going all out to provide the rest of the Simmental world with an opportunity for an enlightening and meaningful interaction. Not only will you see some of the finest Simmental cattle in the world, but you will also see and hear about the latest technology in global beef production. To top it all off we will show you the best time ever.

The Second World Congress will be held in conjunction with the world famous Calgary Exhibition and Stampede. Choice seats have been reserved to enable you to see the world's top cowboys risking life and limb against some of the strongest and meanest rodeo stock in the world.

The congress features the best in western hospitality — Simmental barbeques, a barn dance, chuck wagon breakfasts, and even roping and branding demonstrations. This is family fun at its best!

The agenda is briefly as follows:

Tuesday, July 4:

Arrival of World Council delegates.

Wednesday, July 5:

9 a.m. — World Council meeting; Simmental breeders from around the world arrive.

7.30 p.m. — Wine and cheese party.

Thursday, July 6:

7 a.m. — Chuck wagon breakfast.

9.30 a.m. — Official opening for members meeting.

6 p.m. — Roping, branding and cutting demonstration at Heritage Park to be followed by a barbeque and barn dance.

Friday, July 7:

9 a.m. — World famous Calgary Stampede parade.

1.45 p.m. — World famous Calgary Stampede rodeo.

5 p.m. — Official opening of Simmental livestock event.

Saturday, July 8:

9 a.m. — Show of female Simmental stock.

7.45 p.m. — Thrills and spills viewing the chuck wagon races and grandstand show.

Sunday, July 9:

European Day:

a.m. — Interdenominational church service at Stampede.

p.m. — Show of bulls and Sire Groups.

p.m. — Visit to breeders' farms and barbeque.

Monday, July 10:

United States Day:

Evening sale of Simmental breeding stock.

Tuesday, July 11:

a.m. — Junior heifer show, steer show and sale.

p.m. — Visit to breeders' farms and barbeque.

Wednesday, July 12 to

Friday, July 14:

Farm and ranch tours combining demonstrations of the latest techniques and technology in beef production plus outstanding speakers on pertinent topics.

Calgary is located only 75 miles from Banff National Park, an area renowned the world over for its beauty and setting in the Rocky Mountains. To add a final supreme touch a post congress tour has been arranged.

TERMINATION OF MEMBERSHIP

As in all membership organisations there will always be some fluctuation in numbers. Members are reminded that should they wish to discontinue their membership they must first advise the office in writing. For a resignation to be effective all fees and levies outstanding, inclusive of the current year's subscription, must be met as set out in Rule 8(a).

An Appreciation

In our last issue the Secretary recounted a few instances of late phone calls — our journal is apparently widely and carefully read — the following letter was recently received by the Secretary.

Quote: Dear Ian,

Reading your humorous comment on my telephone call to you re the Angus Bull reminded me that I might not have written to thank you for the great obligation you did for us in the early hours of the morning.

I would be very pleased if you would express my thanks for what you did in the next issue of the New Zealand Simmental Magazine. Just emphasise what I am sure your members already know that they they have a most obliging and good natured Secretary.

Yours sincerely,
Arch Campbell

A. R. Campbell, B.Sc., MRCVS.,
Director of Cattle Breeding Services.
The Scottish Milk Marketing Board, Renfrew.

MINI ADVERTISEMENTS

It is regretted that due to space restrictions we have not been able to print the few Mini Advertisements sent in by breeders in this issue. The production of the journal is for a set number of pages and to exceed this becomes most uneconomic.

SSS Simmentals -for endless breeding

Ours is still the biggest stud of German Simmental in Britain. Our top 14 sires include the very best bloodlines and "families" from the area which produces the very best in the breed — Southern Bavaria.

The stud is the product of no fewer than five separate importations and a selection

procedure based on the collective practical experience and expertise of top Scottish stockmen.

For the breeder who knows how to make the best use of the best, Scottish Simmentals offer endless breeding scope.



SCOTTISH GERALD 7318651. At 4 yrs. 4 mths. this bull weighed 1100 kgs. (2425 lbs) and was 147 cms. in height. This bull is currently being progeny tested and the interim calving survey on 174 observations is (1) Farmer Assist 1.1 % (2) Veterinary Assist 0.0 % (3) Malpresentation 0.0 %.

Scottish Semen Services

Southbar Cattle Breeding Centre, Inchinnan, Renfrew, Scotland
Newlands Cattle Breeding Centre, Scone, Perthshire, Scotland

Division of the S.M.M.B. Underwood Road, Paisley

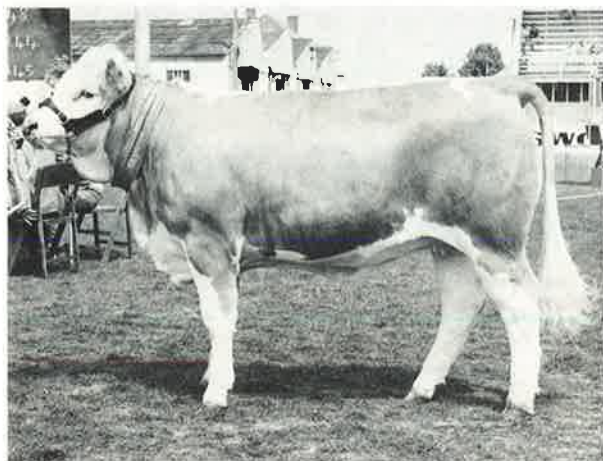
Breed Scottish-Breed Best

Selected by Stockmen for Stockmen



Dalgaty New Zealand Ltd. Central
Stud Stock Department
Ph. Palmerston North 68039
International Semen Distributors Ltd.
Ph. Palmerston North 69129
Northland Herd Improvement
Association Inc. Ph. Whangarei 84059
Auckland Herd Improvement
Association Inc. Ph. Hamilton 81129
Bay of Plenty and East Coast Herd
Improvement Association Inc.
Ph. Whakatane 7269
Livestock Improvement Association
Taranaki Inc. Ph. New Plymouth 80479
Livestock Improvement Association
Wellington-Hawke's Bay Inc.
Ph. Palmerston North 80102
Livestock Improvement Association
South Island Inc. Ph. Christchurch 892079
South Island Breeding Centre Ltd.
Ph. Kaipoi 6175
D. P. Graham and Sons Ph. Tai Tapu 824
NZ Sire Services Ltd. Ph. Hamilton 437995
NZ Dairy Board Semen Sales
Ph. Hamilton 65044

• PENDEEN SIMMENTAL STUD •



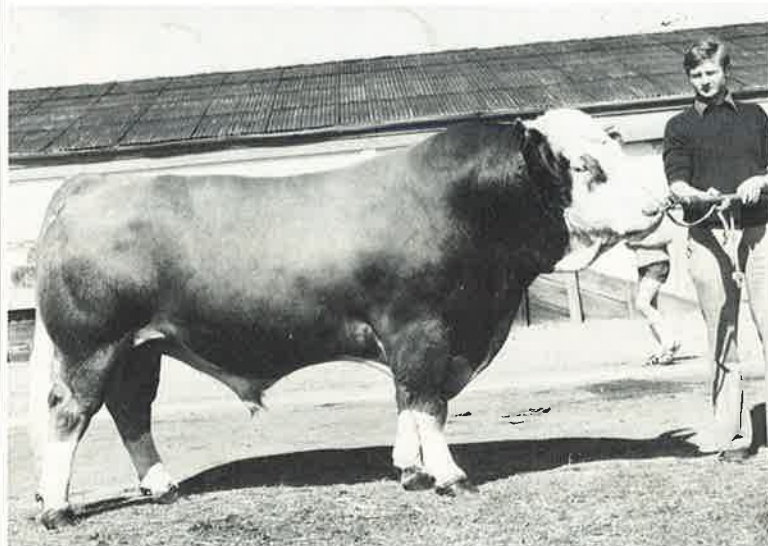
PENDEEN GRETEL
Winner of the
SUPREME CHAMPION
CHALLENGE TROPHY
at the
1977 ROYAL SHOW

- We have available a full brother of PENDEEN GRETEL
- GRENADIER was born July 1976 and is a similarly outstanding animal.
- Of interest to dairying members, we have two magnificent bulls by the Milk Recorded Bull ACAJOU who is also noted for his ease of calving and conformation.
- Other Bloodlines available.

MRS. J.C. HALL PENDEEN HORORATA CANTERBURY TEL. HORORATA 873

LEVELS SIMMENTAL STUD

EST. 1971 HERD N° 3



SKERRINGTON
BARON (Imp.)

CHAMPION
SIMMENTAL BULL
ROYAL SHOW 1977

- SKERRINGTON BARON IS TYPICAL OF THE QUALITY THAT IS REQUIRED AT 'THE LEVELS'.
- PUREBRED AND GRADED ANIMALS AVAILABLE.

Enquiries welcome to: RODNEY COX, THE LEVELS, No 4 RD TIMARU. TEL. 82-418